



# BASKETBALL

Norma Collett. BYU Athletic Communications | O: (801) 422-4908 | C: (801) 372-0989 | norma\_collett@byu.edu |

## BYU 2013-14 SCHEDULE

N1	Fri	Colo. Mesa Univ. (Exh)	W 70-66
N2	Sat	Westminster Co. (Exh)#	W 72-60
N8	Fri	South Dakota State#	W 81-53
N12	Tue	at UNLV	W 71-64
N16	Sat	Boston College#	W 70-69
N23	Sat	at CS Northridge	W 82-66
N26	Tue	Washington State	W 80-73
N30	Sat	Arizona	2 p.m. BYUtv

D3	Tue	at Nevada	6:30 p.m. None
D7	Sat	at Creighton	2 p.m. BYU R
D10	Tues	at Weber State	7 p.m. BYU R
D14	Sat	Utah	2 p.m. BYUtv
D21	Sat	Utah State	2 p.m. BYUtv
D28	Sat	LMU+	2 p.m. BYUtv
D30	Mon	Pepperdine+	5 p.m. BYUtv

J2	Thu	Pacific+	7 p.m. BYUtv
J4	Sat	Saint Mary's+#	2 p.m. BYUtv
J9	Thu	at Gonzaga+	6 p.m. TBA
J11	Sat	at Portland+	2 p.m. BYUR
J18	Sat	at San Diego+	2 p.m. TBA
J23	Thu	San Francisco+	7 p.m. BYUtv
J25	Sat	Santa Clara+	2 p.m. BYUtv
J30	Thu	at Saint Mary's+	6 p.m. None

F1	Sat	at Pacific+	2 p.m. BYU R
F6	Thu	at Santa Clara+	7 p.m. TBA
F8	Sat	at San Francisco+	TBA TBA
F13	Thu	Portland+	7 p.m. BYUtv
F15	Sat	Gonzaga+	2 p.m. BYUtv
F20	Thu	at Pepperdine+	TBA TBA
F22	Sat	at LMU+	2 p.m. BYU R

M1	Sat	San Diego+	1 p.m. BYUtv
M6-11		at WCC Champs	TBA TBA

# Denotes double-header with the men's team  
+ West Coast Conference game

## GAME INFORMATION - #6

**BYU (5-0) vs. Arizona (1-5)**  
When: Saturday, Nov. 30, 2013 • 2 p.m.  
Where: Provo, Utah • Marriott Center

## TEAM STAT COMPARISON

BYU	CATEGORY	AZ
5-0	W-L	1-5
0-0	Last 10	0-0
5-0	Last 5	1-4
76.8	PPG	62.8
.440	FG%	.408
.375	3FG%	.397
.726	FT%	.649
45.2	RPG	36.7
19.8	Assist/Game	13.0
17.6	TO/Game	17.7
6.8	Steals/Game	6.8
6.6	Blocks/Game	2.7



## BYU (5-0) COUGARS

Head Coach: Jeff Judkins  
Alma Mater: Utah, 1978  
Career Record: 259-126 (13th)  
Record at BYU: Same

## BROADCAST PLANS

TV: BYUtv  
TV Talent: Ty Brandenburg (play-by-play)  
Kristen Kozlowski (analyst)  
Live Video: byutvsports.com  
Live Stats: byucougars.com



## ARIZONA (1-5) WILDCATS

Head Coach: Niya Butts  
Alma Mater: Tennessee, 2000  
Career Record: 74-83 (6)  
Record at AZ: Same

## BYU STORYLINES

- The Cougars are 5-0, their best start since the 2005-06 season when they went 10-1 in their nonconference portion of the schedule
- In three of the five games played, the Cougars have scored 80-plus points, 81 vs. So. Dakota St., and 82 at CS Northridge, 80 vs. Washington State.
- BYU has outrebounced four of five of their opponents, tying with Washington State at 40
- In all games played, the Cougars dished out more assists and recorded more blocks than their opponents
- In points in the paint, BYU has scored 175 to opponents 94
- When comparing points from the bench, opponents have a slight edge 92, to 83 from the Cougars
- At least four different players put up double figures in points in three of the five games played

## BYU PROBABLE STARTERS



**#15 | Kylie Maeda**  
Guard | 5-5 | So.  
Honolulu, Hawaii  
Iolani HS

GP/GS	MPG	Pts	Reb	Ast	Stl	FG%	3PT%	FT%
5/5	21.2	1.8	2.6	2.8	.40	.364	.250	.000

**Last Game:** Dished out career highs in assists with 6 while scoring 3 points, pulling down 3 rebounds and getting 2 steals

**Notes:** Is averaging nearly 21 minutes of playing time ... ranks third on the team in the assists category



**#4 | Kim Beeston**  
Guard | 5-11 | Sr.  
Heber City, UT  
Wasatch HS

GP/GS	MPG	Pts	Reb	Ast	Stl	FG%	3PT%	FT%
5/5	33.8	15.2	4.8	5.0	1.6	.521	.541	.750

**Last Game:** Picked up season highs in points with 21 and in assists with 7 ... the assists put her in 6th place all-time in that category

**Notes:** Ranks 2nd in scoring averaging 15.2 points... tops the list in assists with a 5.0 average ... has team's best 3-point field goal percentage .541 (20-37)



**#21 | Lexi Eaton**  
G/F | 5-10 | So.  
Mapleton, UT  
Springville HS

GP/GS	MPG	Pts	Reb	Ast	Stl	FG%	3PT%	FT%
5/5	24.4	13.8	4.4	2.2	.79	.333	.273	.864

**Last Game:** Recorded career highs in points and in rebounds with 27 and 9 respectively ... shot perfect from the free throw line going 6 for 6 and dished out 4 assists

**Notes:** Ranks third on the team in scoring averaging 13.8 ppg ... ties for third place in the steals category with four to date ... has best FT percentage at .864 (19-22)



**#5 | Jennifer Hamson**  
Center | 6-7 | Sr.  
Lindon, UT  
Pleasant Grove HS

GP/GS	MPG	Pts	Reb	Ast	Stl	FG%	3PT%	FT%
5/5	28.2	19.6	9.0	1.2	.60	.610	.000	.743

**Last Game:** Scored 20 points, 18 in the second half while grabbing 8 rebounds, two blocks and 1 steal

**Notes:** Is the team's leading scorer averaging 19.6 ppg ... has tallied double digits in points in all games ... leads in rebounds with a 9.0 average ... tops the list in blocks with 19



**#41 | Morgan Bailey**  
Forward | 6-2 | Jr.  
Orem, UT  
Timpanogogs HS

GP/GS	MPG	Pts	Reb	Ast	Stl	FG%	3PT%	FT%
5/5	27.4	9.8	7.4	1.8	1.0	.417	.000	.500

**Last Game:** Picked up 2 points, pulled down 3 rebounds and had 1 assist

**Notes:** Ranks 2nd in rebounds averaging 7.4 per game ... is fourth on the squad in scoring with 9.8 ppg ... currently plays the third most minutes on the team

## OFF THE BYU BENCH

No.	Name	Pos.	Ht.	Yr.	Pts.	Reb.	Hometown (Previous School)	Notes
1	Carly Stratton	G	5-7	So.	0.0	0.0	St. George, UT (Hurricane HS)	Played 2 minutes vs. So. Dakota State
3	Ashley Garfield	G	5-11	Jr.	5.4	6.8	Morgan, UT (Morgan HS)	Ranks third on the team in rebounds
10	Stephanie Rovetti	G	5-6	Jr.	2.4	3.4	Reno, NV (Reno HS)	2nd in assists, game-high 6 @ CSUN
11	Xojian Harry	G	5-11	Jr.	5.6	1.6	Bountiful, UT (Woods Cross HS)	Ties for 3rd best FG percentage
20	Cassie Broadhead	G	5-9	Fr.			Glennville, N.Y. (Scotia Glennville HS)	Will redshirt 2013-14 season
22	Kristine Fuller	G/F	5-11	Fr.RS.	0.7	1.3	Crystal Beach, FL (PalmHarborJHS)	Averages 10.0 minutes of playing time
23	Makenzie Morrison	G	5-87	Fr.RS.	2.4	0.4	Draper, UT (Alta HS)	Averages 8.0 minutes of playing time
34	Micaelee Orton	F	6-2	Fr.RS.	0.0	1.5	Kearns, UT (Kearns HS)	Played in 1st college game vs. So.D.St.
42	Savannah Irwin	C	6-5	Fr.			Carlsbad, CA (LaCosta Canyon HS)	Has not yet played

**UNIVERSITY INFORMATION**

Location	Provo, Utah 84602
Elevation	4,553 feet
Enrollment	33,278
Founded	October 15, 1875
Owned	LDS Church
Nickname	Cougars
Mascot	Cosmo the Cougar
Colors	Dark blue and white
Conference	West Coast
Arena	Marriott Center (20,900)
BYU President	Cecil O. Samuelson (Utah, 1970)
Athletic Director	Tom Holmoe (BYU, 1983)
Head Coach	Jeff Judkins (Utah, 1978)
Office Phone	801-422-8035
Assist. Coaches	Melinda Bendall (BYU, 2007)
	Ray Stewart (UVU, 2000)
	Dan Nielson (BYU, 2006)
Judkins Record at BYU	259-126/13
2012-13 Record	23-11
2012-13 WCC Record	11-5, T3rd
2012-13 WNIT	Third Round
2012-13 Final Ranking	n/a
Starters Returning/Lost	2/3
Letterwinners Returning/Lost	9/5
Newcomers	9

**RETURNING STARTERS (2)**

Kim Beeston	Sr.	10.0 ppg	4.0 rpg
Jennifer Hamson	Sr.	11.2 ppg	8.8 rpg

**STARTERS LOST (3)**

Haley Steed	Gs.	10.5 ppg	4.2 rpg
Stephanie Seaborn	Jr.	6.7 ppg	2.8 rpg
Keilani Unga	Sr.	7.2 ppg	4.6 rpg

**RETURNING LETTERWINNERS (9)**

Morgan Bailey	Jr.	7.9 ppg	5.0 rpg
Kim Beeston	Sr.	10.0 ppg	4.0 rpg
Lexi Eaton	So.	15.6 ppg	4.0 rpg
Ashley Garfield	Jr.	4.4 ppg	4.5 rpg
Jennifer Hamson	Sr.	11.2 ppg	8.8 rpg
Xojian Harry	Jr.	3.5 ppg	1.5 rpg
Kylie Maeda	So.	1.5 ppg	1.0 rpg
Stephanie Rovetti	So.	2.4 ppg	0.4 rpg*
Carly Stratton	So.	0.2 ppg	0.2 rpg

\* Stats from 2011-12 season

**LETTERWINNERS LOST (5)**

Stephanie Seaborn	6.7 ppg	2.8 rpg
Haley Steed	10.5 ppg	4.2 rpg
Keilani Unga	7.2 ppg	4.6 rpg
Brooke Romney	0.0 ppg	1.1 rpg
Kylie Brown	0.5 ppg	0.3 rpg

**NEWCOMERS (9)**

Kristine Fuller	5-11	Fr.	RS	G
Makenzi Morrison	5-8	Fr.	RS	G
Micaelee Orton	6-2	Fr.	RS	F
Cassie Broadhead	5-7	Fr.		G
Amy Harris	5-7	Fr.		G
Savannah Irwin	6-5	Fr.		C
Hannah Packard	5-5	Fr.		G
Hannah Rose	5-9	Fr.		G
Maddy Ziering-Smith	5-5	Fr.		G

**2013 -14 BYU BASKETBALL ROSTER****2013-14 NUMERICAL ROSTER**

No.	Name	Pos.	Ht.	Cl.	Exp.	Hometown (Previous School)
1	Carly Stratton	G	5-7	So.	1V	Hurricane, Utah (Hurricane HS)
3	Ashley Garfield	G	5-11	Jr.	2V	Morgan, Utah (Morgan HS)
4	Kim Beeston	G	5-11	Sr.	3V	Heber City, Utah (Wasatch HS)
5	Jennifer Hamson	C	6-7	Sr.	3V	Lindon, Utah (Pleasant Grove HS)
10	Stephanie Rovetti	G	5-6	Jr.	1V	Reno, Nev. (Reno HS)
11	Xojian Harry	G/F	5-11	Jr.	2V	Bountiful, Utah (Viewmont/WoodsCross HS)
12	Maddy Ziering-Smith	G	5-5	Fr.	HS	Laguna Beach, Calif. (Laguna Beach HS)
14	Hannah Packard	G	5-5	Fr.	HS	Springville, Utah (Springville HS)
15	Kylie Maeda	G	5-5	So.	1V	Honolulu, Hawaii (Iolani HS)
20	Cassie Broadhead	G	5-8	Fr.	HS	Glennville, N.Y. (Scotia Glennville HS)
21	Lexi Eaton	G	5-10	So.	1V	Mapleton, Utah (Springville HS)
22	Kristine Fuller	G/F	5-11	Fr.	RS	Crystal Beach, Fla. (Palm Harbor Univ.HS)
23	Makenzie Morrison	G	5-11	Fr.	RS	Draper, Utah (Alta HS)
31	Hannah Rose	G	5-9	Fr.	HS	Beaverton, Ore. (Southridge HS)
34	Micaelee Orton	F	6-2	Fr.	RS	Kearns, Utah (Kearns HS)
41	Morgan Bailey	F	6-2	Jr.	2V	Orem, Utah (Timpanogos HS)
42	Savannah Irwin	C	6-5	Fr.	HS	Carlsbad, Calif. (La Costa Canyon HS)

**Head Coach:** Jeff Judkins (Utah 1978) – entering 13th season**Assistant Coaches:** Melinda Bendall, Ray Stewart, Dan Nielson**Director of Basketball Operations:** Haley Steed**Athletic Trainer:** Andie Garrett**Team Manager:** MacKenzie Nielson**PRONUNCIATION GUIDE**

- No. 11 Xojian Harry (Zoh-Zohn)  
 No. 12 Maddy Ziering-Smith (Zee-ring)  
 No. 15 Kylie Maeda (Mah-eh-dah)  
 No. 34 Micaelee Orton (Mah-kay-lee)

**Co-Team Captains**

Seniors Kim Beeston and Jennifer Hamson have been selected as team co-captains for the 2013-14 season. It is the first such honor for both.

## About BYU

On a five game winning streak, the BYU women's basketball team (5-0) returns to the Marriott Center for another battle against a Pac-12 foe. The Cougars take on Arizona (1-5) on Saturday, Nov. 30, at 2 p.m. The game can be seen live on BYUtv.

The 5-0 start to the 2013-14 season is the team's best start since the 2005-06 campaign when they went 8-0 before losing a home game to NC State. BYU is averaging 76 points per game, holding opponents to 65 and has three players in double digit scoring. They have outrebounded their opponents, recorded more assists and more blocks in all games played.

BYU returns nine letterwinners and two starters from a team that compiled a 23-11 record last season, finished tied for third in the West Coast Conference and competed for the second straight year in the postseason WNIT.

In the coaches' preseason poll, the Cougar women were picked to finish fourth in the WCC regular season race behind San Diego, Saint Mary's and league favorite Gonzaga. Senior center Jennifer Hamson was named to the preseason all-conference team, her second such honor.

- Head coach: Jeff Judkins (Utah, '78) enters his 13th season
- Team's leading scorer: #5 Jennifer Hamson, 19.6 ppg
- Team's leading rebounder: #5 J. Hamson, 9.0 rpg
- Team's assists leader: #4 Beeston, 5.0 apg
- Team's steals leader: #4 Beeston, 1.6 spg
- Team's blocks leader: #5 J. Hamson, 3.8 bpg

## About ARIZONA

The University of Arizona has compiled a 1-5 record to date with their lone win, a 51-49 victory at UC Santa Barbara.

The Wildcats returns seven letterwinners including four starters from last year's team that finished with a 12-18 record.

Arizona was picked to finish league play in 11th place. The Wildcats are the second of three teams that BYU plays from the Pac-12 conference.

- Head coach: Niya Butts (Tennessee, 2000) begins 6th season
- Team's leading scorer: #1 Candice Warthen, 16.0 ppg
- Team's leading rebounder: #24 LaBrittney Jones, 6.3 rpg
- Team's assists leader: #1 C. Warthen, 3.5 apg
- Team's steals leader: #1 C. Warthen, 2.0 spg
- Team's blocks leader: #24 L. Jones, 1.2 bpg

### Series History

BYU leads the series 7-5

### Last Meeting

These two teams met last season on Nov. 20 in Tucson with BYU coming out with the 62-48 victory behind a double-double from Jennifer Hamson who was making her season debut with the women's basketball team. She played 27 minutes scoring a season-high 23 points and pulled down 14 rebounds. Both were game highs. Lexi Eaton and Kim Beeston joined Hamson in double figures with 14 and 12 points, respectively. Eaton was perfect from the line, knocking in 6 of 6. Beeston added five assists and three steals.

BYU's bench outscored Arizona 13-3 and scored 36 points in the paint to the Wildcats' 10.

The Cougars took a 28-21 lead at halftime and with 15:52 remaining in the contest were up by 15, 38-23. BYU led by 17 with five minutes to go when the Wildcats mounted a comeback with back-to-back treys to cut the lead to 10 with 2:38 to play. Two shots from the line brought the Wildcats within eight.

Hamson halted the 8-0 Arizona run with a layup for BYU before Eaton hit both free throws to extend its lead to 60-48 with 1:22 on the clock.

## USA TODAY/ESPN Top 25 Coaches Poll Preseason Poll (Nov. 26)

Rank	School (Record)
1.	Connecticut (8-0)
2.	Duke (5-0)
3.	Louisville (6-0)
4.	Tennessee (5-0)
5.	Stanford (5-1)
6.	Notre Dame (4-0)
7.	Kentucky (6-0)
8.	Maryland (5-1)
9.	Baylor (6-0)
10.	Nebraska (5-0)
11.	Texas A&M (3-0)
12.	North Carolina (4-1)
13.	South Carolina (7-0)
14.	Penn State (3-1)
15.	Iowa State (4-0)
16.	Oklahoma (4-2)
17.	Louisville State (4-1)
18.	Michigan State (4-1)
19.	Colorado (4-0)
20.	California (3-2)
21.	Georgia (5-0)
22.	Purdue (4-0)
23.	Oklahoma State (5-0)
24.	Gonzaga (3-1)*
24.	DePaul (3-0)

Receiving Votes: BYU (17),  
St. Mary's\* (11),  
\* Denotes BYU Opponent

### 2013-14 NCAA Ranking Summary - (11/25/13)

Category - Team	Rank
Blocked Shots Per Game	3rdT
Assists Per Game	18thT
Field Goal Percentage Defense	31st
Rebound Margin	33rd

### Category - Player

Blocked Shots Per Game - J. Hamson	2ndT
3-point FG Per Game - K. Beeston	4thT
Field-Goal Percentage - J. Hamson	16th
Double Doubles - J. Hamson	17thT
3-point FG Percentage - K. Beeston	24thT

### 2013-14 Player Honors

#### Jennifer Hamson

- West Coast Conference Player of the Week- 11/18/13
- College Sports Madness West Coast Player of the Week - 11/18/13

**BYU RECORDS**

**2013-14 BYU Records When....**

BYU leads at the half.....	4-0
Opponent leads at the half.....	1-0
Score is tied at the half.....	0-0
Games goes into overtime.....	0-0
BYU shoots 50% or better.....	0-0
Opponent shoots 50% or better.....	0-0
BYU makes five or more 3-pointers.....	4-0
Opponent makes five or more 3-pointers.....	4-0
BYU outrebounds opponent.....	4-0
Opponent outrebounds BYU.....	0-0
Rebounds are equal.....	1-0
BYU has 16 and under turnovers.....	2-0
Opponent has 16 and under turnovers.....	3-0
BYU has 17-20 turnovers.....	2-0
Opponent has 17-20 turnovers.....	1-0
BYU has more than 20 turnovers.....	1-0
Opponent has more than 20 turnovers.....	1-0
BYU dishes out more assists.....	5-0
Opponent dishes out more assists.....	0-0
BYU has more blocks.....	5-0
Opponent has more blocks.....	0-0
BYU records more steals.....	2-0
Opponent records more steals.....	5-0
In November.....	5-0
In December.....	0-0
In January.....	0-0
In February.....	0-0
In March.....	0-0
In April.....	0-0
Last five games.....	5-0
Longest win streak.....	5-0
Playing on Monday.....	0-0
Playing on Tuesday.....	2-0
Playing on Wednesday.....	0-0
Playing on Thursday.....	0-0
Playing on Friday.....	1-0
Playing on Saturday.....	2-0

**2013-14 BYU TEAM HIGHS**

<b>POINTS</b>	
(82)...@ Cal State Northridge (11/23)	<b>STEALS</b>
	(12)..... vs. So. Dakota St. (11/8)
<b>REBOUNDS</b>	<b>FG PERCENTAGE</b>
(52)..... vs. Boston College (11/6)	(.469)@ Cal State Northridge (11/23)
(52)...@ Cal State Northridge (11/23)	
<b>3-POINTERS</b>	<b>3-PT FG PERCENTAGE</b>
(9)..... vs. So. Dakota St. (11/8)	(.474)..... vs. So. Dakota St. (11/8)
<b>ASSISTS</b>	<b>FT PERCENTAGE</b>
(23)..... vs. Washington St. (11/26)	(.818)..... vs. Washington St. (11/26)
<b>BLOCKS</b>	
(10)..... vs. So. Dakota St. (11/8)	

**2013-14 BYU INDIVIDUAL HIGHS**

**POINTS**

(28).....	J. Hamson vs. Boston College (11/16)
(27).....	L. Eaton vs. Washington St. (11/26)
(24).....	J. Hamson @ Cal State Northridge (11/23)
(21).....	K. Beeston vs. Washington St. (11/26)
(20).....	J. Hamson vs. Washington St. (11/26)
(18).....	L. Eaton vs. So. Dakota St. (11/8)
(18).....	K. Beeston vs. So. Dakota St. (11/8)
(16).....	L. Eaton @ Cal State Northridge (11/23)
(14).....	K. Beeston @ Cal State Northridge (11/23)
(13).....	M. Bailey @ Cal State Northridge (11/23)
(13).....	K. Beeston vs. Boston College (11/16)
(13).....	J. Hamson @ UNLV (11/12)
(13).....	X. Harry @ UNLV (11/12)
(13).....	J. Hamson vs. So. Dakota St. (11/8)
(13).....	M. Bailey vs. So. Dakota St. (11/8)

**REBOUNDS**

(14).....	M. Bailey vs. Boston College (11/16)
(12).....	J. Hamson vs. Boston College (11/16)
(11).....	J. Hamson @ Cal State Northridge (11/23)
(10).....	A. Garfield @ Cal State Northridge (11/23)
(10).....	M. Bailey @ UNLV (11/12)
(10).....	J. Hamson vs. So. Dakota St. (11/8)
(9).....	L. Eaton vs. Washington St. (11/26)
(8).....	J. Hamson vs. Washington St. (11/26)
(8).....	A. Garfield vs. Washington St. (11/26)
(8).....	A. Garfield vs. So. Dakota St. (11/8)
(7).....	S. Rovetti @ Cal State Northridge (11/23)
(7).....	L. Eaton @ Cal State Northridge (11/23)
(6).....	K. Beeston vs. Boston College (11/16)
(6).....	M. Bailey vs. So. Dakota St. (11/8)

**3-POINTERS**

(6).....	K. Beeston vs. So. Dakota St. (11/8)
(4).....	K. Beeston vs. Washington St. (11/26)
(4).....	K. Beeston @ Cal State Northridge (11/23)
(3).....	L. Eaton vs. Washington St. (11/26)
(3).....	K. Beeston vs. Boston College (11/16)
(3).....	X. Harry @ UNLV (11/12)
(3).....	K. Beeston @ UNLV (11/12)
(2).....	L. Eaton vs. So. Dakota St. (11/8)

**ASSISTS**

(7).....	K. Beeston vs. Washington St. (11/26)
(6).....	K. Maeda vs. Washington St. (11/26)
(6).....	S. Rovetti @ Cal State Northridge (11/23)
(6).....	S. Rovetti vs. Boston College (11/16)
(6).....	K. Beeston @ UNLV (11/12)
(5).....	K. Beeston @ Cal State Northridge (11/23)
(5).....	K. Beeston vs. So. Dakota St. (11/8)
(4).....	L. Eaton vs. Washington St. (11/26)
(3).....	K. Maeda @ Cal State Northridge (11/23)
(3).....	A. Garfield @ Cal State Northridge (11/23)
(3).....	M. Bailey vs. Boston College (11/16)
(3).....	K. Maeda @ UNLV (11/12)

**BLOCKS**

(7).....	J. Hamson vs. Boston College (11/16)
(5).....	J. Hamson vs. So. Dakota St. (11/8)
(4).....	J. Hamson @ Cal State Northridge (11/23)

**STEALS**

(4).....	S. Rovetti vs. Boston College (11/16)
(3).....	A. Garfield vs. Washington St. (11/26)
(3).....	M. Bailey vs. So. Dakota St. (11/8)
(3).....	K. Beeston vs. So. Dakota St. (11/8)
(2).....	K. Maeda vs. Washington St. (11/26)
(2).....	K. Beeston vs. Boston College (11/16)
(2).....	K. Beeston @ UNLV (11/12)
(2).....	L. Eaton @ UNLV (11/12)
(2).....	L. Eaton vs. So. Dakota St. (11/8)
(2).....	X. Harry vs. So. Dakota St. (11/8)

**TRACKING CAREER RECORDS (as of 11/25/13)**

<b>Games Played</b>	<b>Blocks</b>
1. Haley Steed - 143 (2006-13)	1. Tresa Spaulding Hamson-494 (1983-87)
21. Cassie King - 113 (2005-09)	2. Jennifer Hamson - 212 (2010-present)
21. Kim Beeston - 113 (2009-present)	3. Debbie Dimond - 199 (1991-95)
<b>Rebounds</b>	<b>1,000-Point Club</b>
1. Tina Gunn Robison - 1,482 (1997-80)	2. Tresa Spaulding Hamson - 2,309 (1983-87)
2. Tresa Spaulding Hamson - 980 (1983-87)	23. Coriann W. Fraughton - 1,002 (2007-11)
12. Jennifer Hamson - 606 (2010-present)	24. Kim Beeston - 920 (2009-present)
	25. Jennifer Hamson - 914 (2010-present)
<b>3-pointers</b>	
5. Behka Stafford - 180 (1992-96)	
6. Kim Beeston - 172 (2009-present)	

**WEST COAST CONFERENCE INFO****Current WCC Standings - 11/27/13**

Place	Team	Conference	Overall
1.	Saint Mary's		5-0
2.	BYU		5-0
3.	San Diego		5-0
4.	Gonzaga		3-1
5.	Pacific		3-2
6.	Portland		3-2
7.	Pepperdine		2-4
8.	San Francisco		1-3
9.	Santa Clara		1-4
10.	Loyola Marymount		1-4

**2013-14 WCC Team Stats - 11/27/13**

Team Stats	All	Conf
Scoring Offense	5th	
Scoring Defense	3rd	
Scoring Margin	3rd	
Free Throw %	1st	
Field Goal %	3rd	
Field Goal % Defense	2nd	
3-Point FG %	3rd	
3-Point FG % Defense	9th	
Rebounding Offense	6th	
Rebounding Defense	3rd	
Rebounding Margin	3rd	
Blocked Shots	1st	
Assists	1st	
Steals	8th	
Turnover Margin	5th	
Assist/Turnover Ratio	2nd	
Offensive Rebounds	9th	
Defensive Rebounds	2nd	
Defensive Reb. %	3rd	
Offensive Reb. %	9th	
3-Point FG Made	3rd	

**2013-14 WCC Ind. Stats - 11/27/13**

Ind. Overall Stats	Player/Place
Scoring	Hamson/2nd
	Beeston/9th
	Eaton/13th
	Bailey/30thT
Rebounding	Hamson/4th
	Bailey/12th
	Garfield/15th
Field Goal Percentage	Hamson/2nd
	Beeston/9th
Assists	Beeston/2nd
	Rovetti/9thT
	Maeda/14thT
	Eaton/5th
	Hamson/12th
	Garfield/14thT
Steals	Beeston/10th
3-Point Field Goal Percentage	Beeston/3rd
	Harry/9th
3-Point Field Goals Made	Beeston/1st
	Harry/14thT
	Eaton/14thT
Blocked Shots	Hamson/1st
	Beeston/12thT
Assist/Turnover Ratio	Beeston/3rd
	Rovetti/6th
Offensive Rebounds	Bailey/6th
	Hamson/12thT
Defensive Rebounds	Hamson/4th
	Garfield/10thT
	Beeston/15th

**2013-14 WCC PRESEASON POLL****Preseason Coaches' Poll**

Place	Team	Points
1.	Gonzaga (9)	81
2.	San Diego (1)	69
3.	Saint Mary's	63
4.	BYU	62
5.	Pacific	46
6.	Loyola Marymount	38
7t.	Portland	27
7t.	San Francisco	27
7t.	Santa Clara	27
10.	Pepperdine	10

**Preseason All-WCC Team**

Player (Yr.)	School	Pos.
Zhane Dikes (So.)	USF	G
Sunny Greinacher (Jr.)	PEP	F
Jennifer Hamson (Sr.)	BYU	C
Maya Hood (So.)	SD	F
Amy Kame (Sr.)	SD	G
Danielle Maulding (Sr.)	SMC	F
Jackie Nared (Sr.)	SMC	G
Haiden Palmer (Sr.)	GON	G
Hazel Ramirez (Sr.)	LMU	G
Jazmine Redmon (Sr.)	GON	G

## HEAD COACH JEFF JUDKINS

**Overall Record:** 259-126/13 (In his 13th season)

**2013-14:** 5-0

**2012-13:** 23-11, 11-5/T3rd



### Career Achievements

- Seven 20-plus win seasons – most wins (26) twice in 2005-06 and in 2011-12
- Five NCAA Tournament appearances - best finish, Sweet Sixteen 2001-02, most recent 2012 First Round
- Four WNIT postseason tournament appearances – most recent, 2012-13 advancing to Third Round. Best finish, Quarterfinal Round (Elite Eight) 2010-11
- Three conference coach of the year awards – 2010-11, 2006-07, 2005-06 - MWC
- Two conference regular season titles – MWC (2005-06 and 2006-07)
- Two conference tournament crowns – MWC (2001-02); WCC (2011-12)
- Coached three All-Americans – Erin Thorn, Ambrosia Anderson, Kristen Riley
- Coached three conference players of the year – Ambrosia Anderson, Dani Kubik Wright, Kristen Riley
- Coached one conference defensive player of the year –Mindy Bonham
- Coached two conference sixth player of the year – Coriann Fraughton, Kristen Riley
- Became BYU's women's basketball all-time winningest coach with his 220th career win when the Cougars defeated Pepperdine, 80-56 on Jan. 12, 2012

### Coaching Experience

- Assistant Coach (men) – University of Utah (1989-99)
- Assistant Coach (women)– BYU (2000-01)

### Playing Career

- NBA with Boston Celtics, Portland Trailblazers, Detroit Pistons, Utah Jazz – Drafted in the second round by the Boston Celtics in 1978, the same year the Celtics selected Larry Bird with the sixth pick overall
- University of Utah – 1974-78 leading Utah to one conference championship and two berths in the NCAA tournament
- While at Utah was a second team Academic All-American, a three-time District VII academic selection and a three-time First Team All-WAC honoree
- Member of the 1977 United States World Games team that captured the gold medal

### Education

University of Utah - Physical and Health Education bachelor's degree, 1978

### Personal

- Married to Mary Kay
- Has five children and six grandchildren

Judkins Coaching Record			
School	Yrs.	Rec.	Postseason
BYU	2001-02	24-9	NCAA Sweet 16
BYU	2002-03	19-12	NCAA 1st Round
BYU	2003-04	15-14	DNC
BYU	2004-05	19-11	WNIT 1st Round
BYU	2005-06	26-6	NCAA 2nd Round
BYU	2006-07	23-10	NCAA 1st Round
BYU	2007-08	13-16	DNC
BYU	2008-09	18-11	DNC
BYU	2009-10	23-10	WNIT Quarterfinals
BYU	2010-11	25-9	WNIT Third Round
BYU	2011-12	26-7	NCAA 1st Round
BYU	2012-13	23-11	WNIT Third Round
Record:		254-126 (.668)	



**1 — CARLY STRATTON**

5-7 • SOPHOMORE • GUARD • HURRICANE, UTAH (HURRICANE HS)

**In 2013-14**

- Played two minutes in the first game of the season vs. So. Dakota State on 11/8/13
- 

**2012-13 (summary)**

- Picked a season best 2 points vs. San Francisco on 1/5/13
- Played in a total of 14 games including 7 West Coast Conference contests
- Averaged 2.6 minutes of playing time
- Averaged .2 points and .2 rebounds per game
- Finished the season with a total of 3 points, 3 rebounds, 1 assist and 1 steal

**Personal**

- Parents are Craig and Connie
- Has five siblings
- Born in St. George, Utah

**2013-14 SEASON HIGHS**

PTS	
REB	
AST	
STL	
BLK	
FGM	
FGA	
3PM	
3PA	
FTM	
FTA	

**CAREER HIGHS**

PTS	
REB	
AST	
STL	
BLK	
FGM	
FGA	
3PM	
3PA	
FTM	
FTA	

**MISCELLANEOUS**

	13-14	Career
Double-Figure PTS		
10-plus Pts		
Double-Doubles		
3-plus AST		
3-plus STL		
3-plus 3-point FG		
Scoring Leader		
Rebound Leader		
Assist Leader		

**STRATTON CAREER STATISTICS (ALL GAMES)**

Year	GP	GS	Min	Avg	FG	FGA	Pct	3FG	FGA	Pct	FT	FTA	Pct	Off	Def	TR	Avg	PF	FO	A	TO	Blk	Stl	Pts	Avg
2011-12	31	0	233	7.5	17	38	.447	0	3	.000	41	54	.759	9	20	29	0.9	28	0	28	35	1	19	75	2.4
2013-14																									
<b>TOTAL</b>																									

**STRATTON CAREER STATISTICS (CONFERENCE GAMES)**

Year	GP	GS	Min	Avg	FG	FGA	Pct	3FG	FGA	Pct	FT	FTA	Pct	Off	Def	TR	Avg	PF	FO	A	TO	Blk	Stl	Pts	Avg
2011-12	15	0	80	5.3	7	14	.500	0	1	.000	7	11	.636	2	4	6	0.4	13	0	8	11	1	4	21	1.4
2013-14																									
<b>TOTAL</b>																									

**3 — ASHLEY GARFIELD**

5-11 • JUNIOR • GUARD • MORGAN, UTAH (MORGAN HS)



**In 2013-14**

- Was the only player off the bench to score points (7) for season bests in the home win vs. Washington State, also grabbed 8 defensive rebounds, dished out 2 assists, had 1 block and 3 steals ... the 3 steals are career highs
- Pulled down a season-high 10 rebounds in the road win at CSUN on 11/23/13 while also contributing 4 points, and a season best 3 assists
- Tallied 6 points, grabbed 5 rebounds in 15 minutes of playing time in the home overtime win over Boston College on 11/16/13
- Came off the bench scoring 6 points and pulling down 3 rebounds in the game at UNLV on 11/12/13
- Grabbed the second most rebounds on the team with 8 in the home opener vs. So. Dakota St. on 11/8/13 while contributing 4 points, 1 assist, 1 block and 1 steal

**2013-14 SEASON HIGHS**

PTS	7, vs. Washington State – 11/26/13
REB	10, at CS Northridge – 11/23/13
AST	3, at CS Northridge – 11/23/13
STL	3, vs. Washington State – 11/26/13
BLK	1, twice, last at UNLV – 11/12/13
FGM	
FGA	
3PM	
3PA	
FTM	
FTA	

**CAREER HIGHS**

PTS	14, vs. USF – 1/5/13
REB	16, vs. Utah State – 12/4/12
AST	4, twice, last vs. Idaho St. – 3/20/13
STL	3, vs. Washington State – 11/26/13
BLK	2, vs. Portland – 2/21/13
FGM	5, vs. USF – 1/5/13
FGA	8, at Washington State – 11/24/12
3PM	1, six, last vs. SCU – 2/14/13
3PA	2, twice, last vs. PEP – 1/12/13
FTM	7, vs. Utah State – 12/4/12
FTA	8, vs. Utah State – 12/4/12

**In 2012-13 (summary)**

- Recorded 4 games scoring in double figures, tallied one game with a double-double and had 3 games where she dished out at least 3 assists
- Picked up season highs in points: 14 vs. USF on 1/5/13, rebounds: 16 vs. Utah State on 12/4/12, assists: 4 vs. Idaho State on 3/20/13, steals: twice, last at San Diego on 1/10/13, blocks: 2 vs. Portland on 2/21/13
- Named WCC All-Academic Honorable Mention
- Picked up her first career double-double with 14 points and 10 rebounds vs. USF and was perfect 3-for-3 shooting from the free throw line, the points tied for game highs and marked her second double digit outing in points on the year
- Started in her first college game at Harvard grabbing 4 rebounds, 2 points, 2 assists and 1 block
- Came off the bench for 4 minutes scoring 2 points at Boston College
- Played 11 minutes while scoring 2 points vs. Weber St.

**Personal**

- Parents are Doug and Kathy
- Has one brother and one sisters
- Majoring in health education

**MISCELLANEOUS**

	13-14	Career
Double-Figure PTS		4
10-plus Pts		4
Double-Doubles		1
3-plus AST	1	6
3-plus STL	1	4
3-plus 3-point FG		0
Scoring Leader		0
Rebound Leader		2
Assist Leader		0

**GARFIELD CAREER STATISTICS (ALL GAMES)**

Year	GP	GS	Min	Avg	FG	FGA	Pct	3FG	FGA	Pct	FT	FTA	Pct	Off	Def	TR	Avg	PF	FO	A	TO	Blk	Stl	Pts	Avg
2011-12	27	0	160	5.9	14	32	.438	4	9	.444	22	30	.733	9	18	27	1.0	9	0	18	12	3	7	54	2.0
2012-13	34	1	513	15.1	49	109	.450	3	14	.214	49	64	.766	47	106	153	4.5	37	0	35	38	5	16	150	4.4
2013-14	5	0	110	22.0	8	19	.421	0	1	.000	11	15	.733	10	24	34	6.8	10	0	6	7	3	5	27	5.4
<b>TOTAL</b>																									

**GARFIELD CAREER STATISTICS (CONFERENCE GAMES)**

Year	GP	GS	Min	Avg	FG	FGA	Pct	3FG	FGA	Pct	FT	FTA	Pct	Off	Def	TR	Avg	PF	FO	A	TO	Blk	Stl	Pts	Avg
2011-12	14	0	65	4.6	7	14	.500	1	3	.333	10	14	.714	1	8	9	0.6	4	0	5	3	2	3	25	1.8
2012-13	16	0	260	16.3	25	53	.472	2	7	.286	23	30	.767	25	51	76	4.8	17	0	16	14	2	6	75	4.7
2013-14																									
<b>TOTAL</b>																									





**4 — KIM BEESTON**

5-10 • SENIOR • GUARD • HEBER CITY, UTAH (WASATCH HS)

**In 2013-14**

- Has scored in double figures in all games including a season-best 21 vs. Washington State on 11/26/13 ... dished out a season- and game-high 7 assists and pulled down 5 rebounds
- Picked up fourth straight double figure scoring outing with 14 points in the road win at CSUN ... grabbed 5 boards, dished out 5 assists, had 2 blocks and 1 steal
- For the third straight time recorded double figures in points with 13 in the home win over Boston College on 11/16/13 while pulling down 6 boards, dishing out 2 assists and getting 1 block and 2 steals ... the rebounds are season-bests to date
- Put up double digits in points for the second straight time with 10 at UNLV on 11/12/13 and dished out a game-high 6 assists to go along with 2 steals and 4 rebounds
- Recorded her first double figure game in points with 18 in the season home opener vs. South Dakota State on 11/8/13 while picking up new career highs in 3-pointers made with 6 ... dished out a game high 5 assists

**2013-14 SEASON HIGHS**

PTS	21, vs. Washington State – 11/26/13
REB	6, vs. Boston College – 11/16/13
AST	7, vs. Washington State – 11/26/13
STL	3, vs. So. Dakota St. – 11/8/13
BLK	
FGM	6, vs. Washington State – 11/26/13
FGA	11, vs. Boston College – 11/16/13
3PM	6, vs. So. Dakota St. – 11/8/13
3PA	10, vs. So. Dakota St. – 11/8/13
FTM	5, vs. Washington State – 11/26/13
FTA	6, vs. Washington State – 11/26/13

**CAREER HIGHS**

PTS	25, vs. Arizona – 12/1/11
REB	9, at Pepperdine – 2/16/13
AST	10, vs. Gonzaga – 3/5/12
STL	5, twice, last vs. Idaho St. – 3/20/13
BLK	2, four, last vs. San Diego – 3/3/12
FGM	9, vs. Arizona – 12/1/11
FGA	16, vs. Portland – 1/21/12
3PM	5, four, last, at POR – 3/2/13
3PA	11, at Utah State – 12/17/11
FTM	8, vs. Seattle – 12/20/12
FTA	10, twice, last vs. Seattle – 12/20/12

**MISCELLANEOUS**

	13-14	Career
Double-Figure PTS	4	45
20-plus Pts	1	3
Double-Doubles		0
3-plus AST	5	44
3-plus STL	1	11
3-plus 3-point FG	4	17
Scoring Leader	1	11
Rebound Leader		2
Assist Leader	3	6

**2012-13 (summary)**

- Recorded 20 games scoring in double figures, had 9 games where she dished out at least 3 assists and tallied 6 games with putting up at least three 3-pointers
- Picked up season highs in points: 19 at Harvard on 11/16/12, rebounds: 9 at Pepperdine on 2/16/13, assists: 8 vs. USF on 1/5/13, steals: 5 vs. Idaho State on 3/20/13
- Finished ranked 32nd nationally in 3-point field goal percentage
- Had a team and season best 5 steals in the home game vs. Idaho State in the WNIT first round
- Named to the WCC All-Academic Team
- Dished out 8 assists which tied for game and season highs, had 3 steals for team highs and tied for season bests in the game vs. USF
- Recorded her first double figure game in points of the year with 13 vs. Weber State on 11/9/12

**Personal**

- Parents are Lindsay and Vicki Parker
- Has three sisters and two brothers
- Husband is Spencer Beeston
- Majoring in school health education

**BEESTON CAREER STATISTICS (ALL GAMES)**

Year	GP	GS	Min	Avg	FG	FGA	Pct	3FG	FGA	Pct	FT	FTA	Pct	Off	Def	TR	Avg	PF	FO	A	TO	Blk	Stl	Pts	Avg	
2009-10	8	0	102	12.8	8	19	.421	4	11	.364	4	7	.571	7	11	18	2.3	11	0	5	10	1	5	24	3.0	
2010-11	33	0	508	15.4	54	131	.412	31	79	.392	26	31	.839	44	39	83	2.5	59	1	49	35	4	24	165	5.0	
2011-12	33	33	915	27.7	108	290	.372	43	152	.283	55	65	.846	33	68	101	3.1	56	1	109	62	16	44	314	9.5	
2012-13	34	34	1055	31.0	108	280	.386	74	194	.381	51	66	.773	29	106	135	4.0	75	1	75	82	7	34	341	10.0	
2013-14	5	5	169	33.8	25	48	.521	20	37	.541	6	8	.750	2	22	25	4.8	8	0	25	10	4	8	76	15.2	
<b>TOTAL</b>																										

**BEESTON CAREER STATISTICS (CONFERENCE GAMES)**

Year	GP	GS	Min	Avg	FG	FGA	Pct	3FG	FGA	Pct	FT	FTA	Pct	Off	Def	TR	Avg	PF	FO	A	TO	Blk	Stl	Pts	Avg	
2009-10	0	0	0	0	0	0	0	0	0	0	0	0	0	0	0	0	0	0	0	0	0	0	0	0	0	
2010-11	16	0	241	15.1	27	55	.491	16	35	.457	10	11	.909	15	15	30	1.9	27	0	17	14	2	6	80	5.0	
2011-12	16	16	452	28.3	39	138	.283	16	76	.211	31	33	.939	10	38	48	3.0	23	0	49	34	5	23	125	7.8	
2012-13	16	16	496	31.0	54	139	.388	34	89	.382	16	22	.727	17	49	66	4.1	33	0	44	37	2	14	158	9.9	
2013-14																										
<b>TOTAL</b>																										

5 — JENNIFER HAMSON

6-7 • SENIOR • CENTER • LINDON, UTAH (PLEASANT GROVE HS)



In 2013-14

- Has scored in double figures in all games including 20 vs. Washington State on 11/26/13 ... grabbed 8 boards, had 1 assist, 2 blocks and 1 steal
- Recorded third double-double of the year with game highs in points (24) and rebounds (11) in the road win at CSUN ... shot 73 percent from the field going 8-11 and 89 percent from the free throw line making 8 of 9 attempts ... had a game-best 4 blocks
- Named WCC Player of the Week on Nov. 18 and College Sports Madness West Coast Player of the Week
- Picked up her second double-double of the year with a career-and game-best 28 points and 12 rebounds in the overtime home win over Boston College on 11/16/13 ... also had a game-and sea-son-best 7 blocks
- Had her second game putting up double digits in points with 13 in the game at UNLV on 11/12/13, the points tied for team highs ... also grabbed 4 rebounds, had 1 block and 1 assist
- Recorded her first double-double of the season with 13 points and 10 rebounds in the home season opener vs. So. Dakota St. on 11/8/13 while also picking up a game-best 5 blocks

2013-14 SEASON HIGHS

PTS	28, vs. Boston College – 11/16/13
REB	12, vs. Boston College – 11/16/13
AST	2, twice, last vs. B.C. – 11/16/13
STL	1, twice, vs. Wash. St. – 11/26/13
BLK	7, vs. Boston College – 11/16/13
FGM	11, vs. Boston College – 11/16/13
FGA	18, vs. Boston College – 11/16/13
3PM	–
3PA	–
FTM	8, at CS Northridge – 11/23/13
FTA	11, vs. Boston College – 11/16/13

CAREER HIGHS

PTS	28, vs. Idaho State – 3/20/13
REB	17, vs. SDSU – 3/23/13
AST	2, seven, last, vs. SDSU – 3/23/13
STL	2, four, last, at USF – 1/26/13
BLK	9, at UNLV – 2/5/11
FGM	11, vs. Boston College – 11/16/13
FGA	18, vs. Boston College – 11/16/13
3PM	–
3PA	1, at Portland – 1/2/12
FTM	9, vs. Eastern Washington – 11/26/11
FTA	11, twice, last vs. B.C. – 11/16/13

MISCELLANEOUS

	13-14	Career
Double-Figure PTS	5	46
20-plus Pts	3	7
Double-Doubles	3	13
3-plus AST		0
3-plus STL		0
3-plus 3-point FG		0
Scoring Leader	3	9
Rebound Leader	2	22
Assist Leader		0

2012-13 (summary)

- Recorded 17 games scoring in double figures, tallied 7 double-doubles and was rebound leader in 16 games
- Picked up season highs in points: 25 vs. Idaho St. on 3/20/13, rebounds: 17 vs. SDSU on 3/23/13, assists: 2, five times, last vs. SDSU on 3/23/13, steals: 2, twice, last at USF on 1/26/13, blocks: vs SMC on 3/27/13
- Finished ranked 12th nationally in blocks per game
- Had a career-best 25 points along with 12 rebounds tallying her 5th double-double of the year in the home game vs. ISU in the first round of the WNIT, also had a game-high 5 blocks and went 7 of 8 from the free throw line
- Named to the WCC All-Academic Team and to the All-West Coast Conference Team
- Named WCC Player of the Week on Feb. 25 for her performance during the week that saw her score 43 points, 16 rebounds, 6 blocks and 3 steals
- Recorded game highs in points, rebounds and blocks with 20, 8 and 4, respectively in the home game vs. Gonzaga while shooting 80 percent from the field, 8 of 10 for career highs in that category, the points marked the fourth straight time she's put up double digits in scoring and the 12 on the year
- Started in her first game of the season at Arizona recording career bests in points with 23 and in rebounds with 14 while picking up her 4th double-double in her career

Personal

- Parents are David and Tresa
- Has two brothers and two sisters
- Mother is the former BYU All-American Tresa Spaulding, who holds numerous school records in basketball
- Majoring in exercise science
- Is a two-sport student-athlete, also playing volleyball

HAMSON CAREER STATISTICS (ALL GAMES)

Year	GP	GS	Min	Avg	FG	FGA	Pct	3FG	FGA	Pct	FT	FTA	Pct	Off	Def	TR	Avg	PF	FO	A	TO	Blk	Stl	Pts	Avg	
2010-11	30	20	455	15.2	90	161	.559	0	0	.000	51	69	.739	58	96	154	5.1	51	1	4	27	45	7	231	7.7	
2011-12	31	0	553	17.8	114	197	.579	0	1	.000	67	89	.753	63	115	178	5.7	52	1	17	31	76	17	295	9.5	
2012-13	26	25	659	25.3	121	235	.515	0	0	.000	48	76	.632	65	164	229	8.8	67	4	18	55	72	20	290	11.2	
2013-14	5	5	141	28.2	36	59	.610	0	0	.000	26	35	.743	13	32	45	9.0	14	0	6	16	19	3	98	19.6	
<b>TOTAL</b>																										

HAMSON CAREER STATISTICS (CONFERENCE GAMES)

Year	GP	GS	Min	Avg	FG	FGA	Pct	3FG	FGA	Pct	FT	FTA	Pct	Off	Def	TR	Avg	PF	FO	A	TO	Blk	Stl	Pts	Avg	
2010-11	16	16	271	16.9	56	97	.577	0	0	.000	27	36	.750	36	52	88	5.5	31	0	2	19	31	4	139	8.7	
2011-12	16	0	289	18.1	61	108	.565	0	1	.000	36	49	.735	36	59	95	5.9	27	1	8	14	40	9	158	9.9	
2012-13	15	15	359	23.9	59	126	.468	0	0	.000	20	34	.588	30	87	117	7.8	40	3	11	34	35	14	138	9.2	
2013-14																										
<b>TOTAL</b>																										

**10 — STEPHANIE ROVETTI**

5-6 • JUNIOR • GUARD • RENO, NEVADA (RENO HS)

**In 2013-14**

- For the second straight time led the team in assists with 6, tying her season and career record in that category in the road win at CSUN on 11/23/13 ... also pulled down career bests in rebounds with 7
- Dished out a game-and career-best 6 assists in the home overtime win vs. Boston College on 11/16/13 while tying her career high in steals with 4 and pulling down a season-best 5 boards
- Picked up her first game scoring in double figures with 10 in the road game at UNLV on 11/12/13, all of the points came from the free throw line where she went 10 for 14 ... also grabbed 3 rebounds and dished out 2 assists
- Came off the bench grabbing 2 rebounds, 1 block and dished out 2 assists in 13 minutes of action in the home season opener vs. South Dakota State on 11/8/13

**2013-14 SEASON HIGHS**

PTS	10, at UNLV – 11/12/13
REB	7, at CS Northridge – 11/23/13
AST	6, twice, last at CSUN – 11/23/13
STL	4, vs. Boston College – 11/16/13
BLK	
FGM	
FGA	
3PM	
3PA	
FTM	10, at UNLV – 11/12/13
FTA	14, at UNLV – 11/12/13

**2012-13 (summary)**

- Suffered season-ending cartilage injury to left knee in practice

**In 2011-12**

- Played in 31 of the 33 total games
- Averaged 7.5 minutes of playing time
- Posted season highs of 12 points, 6 rebounds, 4 assists and 4 steals
- Averaged 2.4 points per game
- Shot 45 percent from the field and 76 percent from the free throw line
- Recorded her first ever double figure game with 12 points at Tulsa on 11/14/11

**In 2010-11**

- Redshirt

**Personal**

- Parents are David and Diana
- Has one brother and three sisters
- Sister Morgan played on the BYU Rugby Team and the U-20 Women's National Rugby Team
- Majoring in dietetics

**CAREER HIGHS**

PTS	12, at Tulsa – 11/11/11
REB	6, at BYU-H – 11/29/11
AST	6, vs. Boston College – 11/16/13
STL	4, four, last vs. B.C. – 11/16/13
BLK	—
FGM	4, at Seattle U – 1/25/12
FGA	4, three, last at Seattle U - 1/25/12
3PM	—
3PA	1, three, last vs. Portland – 1/21/12
FTM	10, at UNLV – 11/12/13
FTA	14, at UNLV – 11/12/13

**MISCELLANEOUS**

	13-14	Career
Double-Figure PTS	1	2
10-plus Pts	1	2
Double-Doubles		0
3-plus AST	2	6
3-plus STL	1	4
3-plus 3-point FG		0
Scoring Leader		0
Rebound Leader		0
Assist Leader	2	2

**ROVETTI CAREER STATISTICS (ALL GAMES)**

Year	GP	GS	Min	Avg	FG	FGA	Pct	3FG	FGA	Pct	FT	FTA	Pct	Off	Def	TR	Avg	PF	FO	A	TO	Blk	Stl	Pts	Avg
2011-12	31	0	233	7.5	17	38	.447	0	3	.000	41	54	.759	9	20	29	0.9	28	0	28	35	1	19	75	2.4
2013-14	5	0	92	18.4	1	7	.143	0	1	.000	10	14	.714	3	14	17	3.4	7	0	18	11	3	5	12	2.4
<b>TOTAL</b>																									

**ROVETTI CAREER STATISTICS (CONFERENCE GAMES)**

Year	GP	GS	Min	Avg	FG	FGA	Pct	3FG	FGA	Pct	FT	FTA	Pct	Off	Def	TR	Avg	PF	FO	A	TO	Blk	Stl	Pts	Avg
2011-12	15	0	80	5.3	7	14	.500	0	1	.000	7	11	.636	2	4	6	0.4	13	0	8	11	1	4	21	1.4
2013-14																									
<b>TOTAL</b>																									



**11 — XOJIAN HARRY**

5-11 • JUNIOR • GUARD • BOUNTIFUL, UTAH (WOODS CROSS HS)

**In 2013-14**

- Picked up new season and career highs in points with 13 in the road game at UNLV on 11/12/13 marking her first double digit outing in points this season ... shot 50 percent from the field going 5 for 10 while also making 3 out of 8 treys, which are also season and career bests
- Came off the bench to score 9 points in 11 minutes of action in the home season opener vs. So. Dakota State on 11/8/13 while shooting perfect from the field going 4 for 4

**2013-14 SEASON HIGHS**

PTS	13, at UNLV – 11/12/13
REB	2, twice, last vs. B.C. – 11/16/13
AST	2, twice, last vs. B. C. – 11/16/13
STL	2, vs. So. Dakota St. – 11/8/13
BLK	
FGM	5, at UNLV – 11/12/13
FGA	10, at UNLV – 11/12/13
3PM	3 at UNLV – 11/12/13
3PA	8 at UNLV – 11/12/13
FTM	
FTA	

**2012-13 (summary)**

- Recorded season highs in points: 11 vs. USF on 1/5/13, rebounds: 6 vs. Western New Mexico on 12/29/12, assists: 3 vs. Western New Mexico on 12/29/12, steals: 3, twice, last at San Diego on 1/10/13
- Named WCC All-Academic Honorable Mention
- Picked up career highs in points with 11 vs. USF for her first double figure game in points of her career
- Grabbed career highs in rebounds with 6 vs. Western New Mexico while also picking up career bests in assists with 3
- Had 3 steals in game vs. Creighton for season highs in that category, the steals tie for career highs
- Played 21 minutes at Washington State tallying 5 points and 2 rebounds
- In 16 minutes of playing time grabbed 3 rebounds and had 1 steal at Boston College, 11/15/12
- Played 16 minutes in the first game of the year vs. Weber State scoring 6 points, 1 assist and 1 block

**CAREER HIGHS**

PTS	13, at UNLV – 11/12/13
REB	6, vs. Western N.M. – 12/29/12
AST	3, vs. Western N.M. – 12/29/12
STL	3, three, last at San Diego – 1/10/13
BLK	2, vs. Portland – 1/21/12
FGM	5, at UNLV – 11/12/13
FGA	10, at UNLV – 11/12/13
3PM	3, at UNLV – 11/12/13
3PA	8, at UNLV – 11/12/13
FTM	3, vs. Western N.M. – 12/29/12
FTA	4, twice last vs. West. N.M. – 12/29/12

**Personal**

- Parents are Carl and Susan
- Has three brothers and one sister
- Majoring in exercise science

**MISCELLANEOUS**

	13-14	Career
Double-Figure PTS	1	3
10-plus Pts	1	2
Double-Doubles		0
3-plus AST		1
3-plus STL		4
3-plus 3-point FG	1	1
Scoring Leader	1	1
Rebound Leader		0
Assist Leader		0

**HARRY CAREER STATISTICS (ALL GAMES)**

Year	GP	GS	Min	Avg	FG	FGA	Pct	3FG	FGA	Pct	FT	FTA	Pct	Off	Def	TR	Avg	PF	FO	A	TO	Blk	Stl	Pts	Avg
2011-12	32	0	251	7.8	31	78	.397	10	37	.270	3	7	.429	5	14	19	0.6	21	0	6	14	3	14	75	2.3
2012-13	34	9	535	15.7	44	135	.326	16	65	.246	16	25	.640	13	37	50	1.5	63	1	19	35	10	15	120	3.5
2013-14	5	0	65	13.0	11	22	.500	6	15	.400	0	0	.000	1	7	8	1.6	10	0	5	4	0	2	28	5.6
<b>TOTAL</b>																									

**HARRY CAREER STATISTICS (CONFERENCE GAMES)**

Year	GP	GS	Min	Avg	FG	FGA	Pct	3FG	FGA	Pct	FT	FTA	Pct	Off	Def	TR	Avg	PF	FO	A	TO	Blk	Stl	Pts	Avg
2011-12	16	0	126	7.9	12	27	.444	6	14	.429	2	4	.500	1	8	9	0.6	10	0	4	9	2	6	32	2.0
2012-13	16	4	237	14.8	19	63	.302	7	35	.200	9	14	.643	3	20	23	1.4	31	1	6	11	4	9	54	3.4
2013-14																									
<b>TOTAL</b>	32	4	363	11.3	31	90	.344	13	49	.265	11	18	.611	4	28	32	1.0	41	1	10	20	6	15	86	2.7

15 — KYLIE MAEDA

5-5 • SOPHOMORE • GUARD • HONOLULU, HAWAII (IOLANI HS)



In 2013-14

- Recorded career highs in assists with 6 in the home win vs. Washington State on 11/26/13 while adding 3 points, 3 rebounds and 2 steals, the steals are season bests
- Pulled down a career-high 5 rebounds in the home overtime win vs. Boston College on 11/16/13
- Dished out 3 assists in the game at UNLV on 11/12/13 while pulling down 2 rebounds
- Started her first collegiate game vs. So. Dakota State on 11/8/13 in the season home opener while contributing 2 points, 2 rebounds, 2 assists in 25 minutes

2013-14 SEASON HIGHS

PTS	2, vs. So. Dakota St. – 11/8/13
REB	5, vs. Boston College – 11/16/13
AST	6, vs. Washington State – 11/26/13
STL	2, vs. Washington State – 11/26/13
BLK	
FGM	
FGA	
3PM	
3PA	
FTM	
FTA	

2012-13 (summary)

- Recorded 5 games where she dished out at least 3 assists,
- Picked up season highs in points: 6, twice, last at LMU on 2/28/13, rebounds: 4, twice, last vs. Western New Mexico on 12/29/12, assists: 5 vs. USF on 1/5/13, steals: 4 vs. Weber State on 11/9/12
- In the road game at LMU suffered a season-ending ACL knee injury after playing 8 minutes and scoring 6 points (all from 3-point range), the points tied for career bests
- Played in her first college game vs. Weber State on 11/9/12 in the home opener recording a game-high 4 steals and dished out season bests in assists with 4

CAREER HIGHS

PTS	6, twice, last, at LMU – 2/28/13
REB	5, vs. Boston College – 11/16/13
AST	5, vs. USF – 1/5/13
STL	4, vs. Weber State – 11/9/12
BLK	1, three, last at Santa Clara – 2/2/13
FGM	–
FGA	–
3PM	2, at LMU – 2/28/13
3PA	3, at LMU – 2/28/13
FTM	4, at Washington State – 11/24/12
FTA	4, at Washington State – 11/24/12

Personal

- Parents are Lance and Eydie
- Has two brothers and two sisters
- Born in Honolulu

MISCELLANEOUS

	13-14	Career
Double-Figure PTS		0
10-plus Pts		0
Double-Doubles		0
3-plus AST	3	8
3-plus STL		1
3-plus 3-point FG		0
Scoring Leader		0
Rebound Leader		0
Assist Leader		0

MAEDA CAREER STATISTICS (ALL GAMES)

Year	GP	GS	Min	Avg	FG	FGA	Pct	3FG	FGA	Pct	FT	FTA	Pct	Off	Def	TR	Avg	PF	FO	A	TO	Blk	Stl	Pts	Avg
2012-13	28	0	287	10.3	15	39	.385	7	18	.389	5	6	.833	5	22	27	1.0	22	0	35	27	2	10	42	1.5
2013-14	5	5	106	21.2	4	11	.364	1	4	.250	0	0	.000	1	12	13	2.6	6	0	14	5	0	2	9	1.8
<b>TOTAL</b>																									

MAEDA CAREER STATISTICS (CONFERENCE GAMES)

Year	GP	GS	Min	Avg	FG	FGA	Pct	3FG	FGA	Pct	FT	FTA	Pct	Off	Def	TR	Avg	PF	FO	A	TO	Blk	Stl	Pts	Avg
2012-13	15	0	150	10.0	9	22	.409	5	12	.417	0	0	.000	3	10	13	0.9	14	0	16	15	1	2	23	1.5
2013-14																									
<b>TOTAL</b>																									



**20 — CASSIE BROADHEAD**

5-9 • FRESHMAN • GUARD • GLENVILLE, N.Y. (SCOTIA GLENVILLE HS)

**In 2013-14**

- Will redshirt the 2013-14 season

**Before BYU**

- Five-year letterwinner in basketball
- 2013 Tartan of the Year
- 2013 Spirit Award
- Team won Foothills Council championship three straight years
- Four-time NBC Newschannel 13 All-Star
- Two-time Section II, Class A First Team
- Four-time leading scorer in Foothills Council
- Three-time Foothills Council MVP
- Five-time Foothills Council First Team
- Three-time First Team Large School Times Union All Area
- Three-time First Team All Area Daily Gazette
- 2013 First Team All State
- Two-time Second Team All State
- 2011 Third Team All State
- 2013 Scholar Athlete Award for Section II
- 2013 Outstanding Student Leadership Award for academics
- All-time career leader at high school in points-1,460; rebounds-501; assists-268; steals-330
- Played for the Saratogo Sparks AAU Basketball Club
- Club team finished second at the 2012 AAU National Championships
- Club team finished ranked ninth at nationals in 2011 and sixth in 2010

**2013-14 SEASON HIGHS**

PTS	
REB	
AST	
STL	
BLK	
FGM	
FGA	
3PM	
3PA	
FTM	
FTA	

**CAREER HIGHS**

PTS	
REB	
AST	
STL	
BLK	
FGM	
FGA	
3PM	
3PA	
FTM	
FTA	

**Personal**

- Born in Glendale, Arizona
- Parents are Tim and Nicole
- Has four sisters and one brother

**MISCELLANEOUS**

	13-14	Career
Double-Figure PTS		
10-plus Pts		
Double-Doubles		
3-plus AST		
3-plus STL		
3-plus 3-point FG		
Scoring Leader		
Rebound Leader		
Assist Leader		

**BROADHEAD CAREER STATISTICS (ALL GAMES)**

Year	GP	GS	Min	Avg	FG	FGA	Pct	3FG	FGA	Pct	FT	FTA	Pct	Off	Def	TR	Avg	PF	FO	A	TO	Blk	Stl	Pts	Avg	
2013-14																										
<b>TOTAL</b>																										

**BROADHEAD CAREER STATISTICS (CONFERENCE GAMES)**

Year	GP	GS	Min	Avg	FG	FGA	Pct	3FG	FGA	Pct	FT	FTA	Pct	Off	Def	TR	Avg	PF	FO	A	TO	Blk	Stl	Pts	Avg	
2013-14																										
<b>TOTAL</b>																										

21 — LEXI EATON

5-10 • SOPHOMORE • GUARD • MAPLETON, UTAH (SPRINGVILLE HS)



In 2013-14

- Had a career night with 27 points and 9 rebounds in the home win vs. Washington State on 11/26/13 while dishing out a season-best 4 assists ... was perfect from the line going 6 for 6 and 3 of 5 from behind the arc, the 3 treys made are season bests
- Picked up her second double digit performance in points with 16 in the road win at CSUN while grabbing season bests in rebounds with 7 to go along with 2 assists and 1 block
- Scored 7 points, dished out 2 assists, grabbed 2 rebounds and 2 steals in the game at UNLV on 11/12/13
- Recorded her first double figure outing in points tying for a team best 18 points in the home season opener vs. South Dakota State on 11/8/13 while also dishing out 2 assists and getting 2 steals

2013-14 SEASON HIGHS

PTS	27, vs. Washington State – 11/26/13
REB	9, vs. Washington State – 11/26/13
AST	4, vs. Washington State – 11/26/13
STL	2, twice, last at UNLV – 11/12/13
BLK	1, vs. So. Dakota St. – 11/8/13
FGM	9, vs. Washington State – 11/26/13
FGA	20, vs. Washington State – 11/26/13
3PM	3, vs. Washington State – 11/26/13
3PA	5, vs. Washington State – 11/26/13
FTM	6, vs. Washington State – 11/26/13
FTA	6, twice, last vs. Wash.St. – 11/26/13

CAREER HIGHS

PTS	27, vs. Washington State – 11/26/13
REB	9, twice, last vs. Wash.St. – 11/26/13
AST	5, vs. Portland – 1/21/12
STL	4 vs. Nevada – 12/22/11
BLK	2, three, last at San Diego – 1/14/12
FGM	10, vs. San Diego – 3/3/12
FGA	20, twice, last vs. Wash.St. – 11/26/13
3PM	3, twice, last vs. San Diego – 3/3/12
3PA	5, vs. San Diego – 3/3/12
FTM	6, four, last vs. Wash.St. – 11/26/13
FTA	8, twice, last vs. Creighton – 11/28/12

MISCELLANEOUS

	13-14	Career
Double-Figure PTS	3	30
20-plus Pts	1	3
Double-Doubles		0
3-plus AST	1	13
3-plus STL		4
3-plus 3-point FG	1	3
Scoring Leader	2	11
Rebound Leader	1	2
Assist Leader		0

2012-13 (summary)

- Suffered season-ending ACL injury to right knee during the home game vs. Utah State
- Had team highs in points and in rebounds with 18 and 9 respectively vs. Creighton, the points mark the 7th time on the year that she's finished the game in double figure points, the rebounds were season and career bests
- Led the team in points with 13 at Washington State marking her 6th straight double figure outing in points
- Finished the game at Arizona with 12 points for her 5th straight double figure contest while going 6-for-6 from the free throw line
- Led all scorers with 17 points at Boston College while grabbing 5 boards and 3 assists
- Recorded second straight double figure outing in points at Dartmouth with 19 leading all scorers
- In the game at Dartmouth shot .833, 5-6 from the charity stripe
- Led all scorers with 24 points in the home opener vs. Weber State while dishing out 4 assists and getting 1 block

Personal

- Parents are Alan and Aleisa
- Has six siblings
- Majoring in psychology

EATON CAREER STATISTICS (ALL GAMES)

Year	GP	GS	Min	Avg	FG	FGA	Pct	3FG	FGA	Pct	FT	FTA	Pct	Off	Def	TR	Avg	PF	FO	A	TO	Blk	Stl	Pts	Avg
2011-12	33	33	752	22.8	131	286	.458	21	60	.350	63	82	.768	49	52	101	3.1	67	1	60	95	13	39	346	10.5
2012-13	8	8	225	28.1	45	98	.459	5	15	.333	30	44	.682	16	16	32	4.0	19	0	13	16	3	4	125	15.6
2013-14	5	5	122	24.4	22	66	.333	6	22	.273	19	22	.864	9	13	22	4.4	12	0	11	14	3	4	69	13.8
<b>TOTAL</b>																									

EATON CAREER STATISTICS (CONFERENCE GAMES)

Year	GP	GS	Min	Avg	FG	FGA	Pct	3FG	FGA	Pct	FT	FTA	Pct	Off	Def	TR	Avg	PF	FO	A	TO	Blk	Stl	Pts	Avg
2011-12	16	16	371	23.2	65	139	.468	14	36	.389	32	44	.727	26	23	49	3.1	37	0	27	51	10	13	176	11.0
2012-13																									
2013-14																									
<b>TOTAL</b>																									



**22 — KRISTINE FULLER** 5-11 • FRESHMAN • GUARD • CRYSTAL BEACH, FL (PALM HARBOR U. HS)

**In 2013-14**

- Played 13 minutes in the road game at CSUN tallying 2 points and 1 rebound
- Saw 9 minutes of action in the game at UNLV on 11/12/13 contributing 2 points, 1 assist and 1 rebound
- Came off the bench playing in her first collegiate game in the home season opener vs. South Dakota State on 11/8/13 contributing 3 rebounds

**2013-14 SEASON HIGHS**

PTS	2, twice, last at CSUN – 11/23/13
REB	3, vs. So. Dakota St. – 11/8/13
AST	
STL	
BLK	
FGM	
FGA	
3PM	
3PA	
FTM	
FTA	

**In 2012-13 Redshirt**

**Before BYU**

- Four-year letterwinner in basketball
- Two-time MVP
- 1,000-point club
- Retired jersey #22
- Averaged 22.2 ppg, 7.9 rpg, 3.2 apg
- Most points scored in a game, 41
- Named Florida Top 24
- Florida All-State All-Star Game
- Named All-County Player of the Year
- Tampa Bay Times First Team
- McDonald's All-America Nominee
- Named to the National Honor Society
- Was on Principal's List
- Garnered PHU Principal Leadership Award
- Played for Gatekeepers Basketball Club
- Lettered in volleyball
- Twice garnered Volleyball Team Player Award

**CAREER HIGHS**

PTS	
REB	
AST	
STL	
BLK	
FGM	
FGA	
3PM	
3PA	
FTM	
FTA	

**Personal**

- Born in Clearwater, Florida
- Parents are Lowell and Lori
- Has two brothers and one sister
- Majoring in exercise and wellness

**MISCELLANEOUS**

	13-14	Career
Double-Figure PTS		
10-plus Pts		
Double-Doubles		
3-plus AST		
3-plus STL		
3-plus 3-point FG		
Scoring Leader		
Rebound Leader		
Assist Leader		

**FULLER CAREER STATISTICS (ALL GAMES)**

Year	GP	GS	Min	Avg	FG	FGA	Pct	3FG	FGA	Pct	FT	FTA	Pct	Off	Def	TR	Avg	PF	FO	A	TO	Blk	Stl	Pts	Avg
2013-14	4	0	40	10.0	2	13	.154	0	4	.000	0	0	.000	2	3	5	1.3	4	0	1	4	0	0	4	1.0
<b>TOTAL</b>																									

**FULLER CAREER STATISTICS (CONFERENCE GAMES)**

Year	GP	GS	Min	Avg	FG	FGA	Pct	3FG	FGA	Pct	FT	FTA	Pct	Off	Def	TR	Avg	PF	FO	A	TO	Blk	Stl	Pts	Avg
2013-14																									
<b>TOTAL</b>																									





**23 — MAKENZI MORRISON**

5-11 • FRESHMAN • GUARD • DRAPER, UTAH (ALTA HS)

**In 2013-14**

- Tied her season high in points with 4 in the road win at CSUN on 11/23/13
- Played 10 minutes in the home overtime win vs. Boston College on 11/16/13 picking up 4 points all coming from the free throw line where she was 4 for 5
- Came off the bench playing in her first collegiate game in the home season opener vs. South Dakota State on 11/8/13 contributing 4 points, 2 assists, 1 rebound

**2012-13  
Redshirt**

**2013-14 SEASON HIGHS**

PTS	4, three, last at CSUN – 11/23/13
REB	1, twice, last at CSUN – 11/23/13
AST	2, vs. So. Dakota St. – 11/8/13
STL	
BLK	
FGM	
FGA	
3PM	
3PA	
FTM	4 vs. Boston College – 11/16/13
FTA	5, vs. Boston College – 11/16/13

**CAREER HIGHS**

PTS	
REB	
AST	
STL	
BLK	
FGM	
FGA	
3PM	
3PA	
FTM	
FTA	

**MISCELLANEOUS**

	13-14	Career
Double-Figure PTS		
10-plus Pts		
Double-Doubles		
3-plus AST		
3-plus STL		
3-plus 3-point FG		
Scoring Leader		
Rebound Leader		
Assist Leader		

**Before BYU**

- Four-year letterwinner in basketball
- High School Female Athlete of the Year
- Three-time 5A MVP
- Three-time First Team All-State
- 5A South All-Star Team
- Named Deseret News 5A State MVP
- Named Salt Lake Tribune 5A State MVP
- Team was 5A State Champions in 2010 and 2011
- 5A First Team Tournament Player
- Ranked first in state in 5A scoring two years straight
- Named Parade All-American
- Gatorade Player of the Year Finalist
- Broke school record in scoring (1,796 pts); steals (345); rebounds (557)
- Played on the Utah Flight Basketball Club
- Named to the End of the Trails Oregon All-Tournament Team
- Lettered in track and tennis
- Took state in tennis
- Received Advanced Degree in high school
- Four-time High Honor Roll
- 3.982 cumulative GPA in high school

**Personal**

- Born in Sandy, Utah
- Parents are Terry and Shelly
- Has one brother

**MORRISON CAREER STATISTICS (ALL GAMES)**

Year	GP	GS	Min	Avg	FG	FGA	Pct	3FG	FGA	Pct	FT	FTA	Pct	Off	Def	TR	Avg	PF	FO	A	TO	Blk	Stl	Pts	Avg
2013-14	5	0	33	6.6	4	8	.500	0	4	.000	4	5	.800	0	2	2	0.4	4	0	4	5	0	0	12	2.4
<b>TOTAL</b>																									

**MORRISON CAREER STATISTICS (CONFERENCE GAMES)**

Year	GP	GS	Min	Avg	FG	FGA	Pct	3FG	FGA	Pct	FT	FTA	Pct	Off	Def	TR	Avg	PF	FO	A	TO	Blk	Stl	Pts	Avg
2013-14																									
<b>TOTAL</b>																									



**34 — MICALEE ORTON**

6-2 • FRESHMAN • FORWARD • KEARNS, UTAH (KEARNS HS)

**In 2013-14**

- Played 7 minutes in the road game at CSUN on 11/23/13
- Came off the bench playing in her first collegiate game in the home season opener vs. South Dakota State on 11/8/13

**In 2012-13**

Redshirt

**2013-14 SEASON HIGHS**

PTS	
REB	
AST	
STL	
BLK	
FGM	
FGA	
3PM	
3PA	
FTM	
FTA	

**Before BYU**

- Four-year letterwinner in basketball
- Three-time team captain
- Received Cougar of the Month award
- Garnered Athlete of the Month award
- Team MVP
- Named First Team All-Region
- Three-time state Honorable Mention
- First Team All-State in 2012
- Averaged a double double in points (16.1) and rebounds (10.6)
- Played on the Salt Lake Metro Basketball Club
- Four-year letterwinner in volleyball
- Named team captain
- Garnered Second Team All-Region citation
- Two-time letterwinner in track and field
- Competed in state championships in high jump, long jump and 4x400m
- Took first in region for the 4x400m
- Placed fourth in the region in the high jump

**CAREER HIGHS**

PTS	
REB	
AST	
STL	
BLK	
FGM	
FGA	
3PM	
3PA	
FTM	
FTA	

**Personal**

- Born in Sandy, Utah
- Parents are Michael and Ann
- Has two sisters and one brother
- Majoring in exercise and wellness

**MISCELLANEOUS**

	13-14	Career
Double-Figure PTS		
10-plus Pts		
Double-Doubles		
3-plus AST		
3-plus STL		
3-plus 3-point FG		
Scoring Leader		
Rebound Leader		
Assist Leader		

**ORTON CAREER STATISTICS (ALL GAMES)**

Year	GP	GS	Min	Avg	FG	FGA	Pct	3FG	FGA	Pct	FT	FTA	Pct	Off	Def	TR	Avg	PF	FO	A	TO	Blk	Stl	Pts	Avg
2013-14	2	0	8	4.0	0	1	.000	0	0	.000	0	0	.000	1	2	3	1.5	0	0	0	1	0	0	0	0.0
<b>TOTAL</b>																									

**ORTON CAREER STATISTICS (CONFERENCE GAMES)**

Year	GP	GS	Min	Avg	FG	FGA	Pct	3FG	FGA	Pct	FT	FTA	Pct	Off	Def	TR	Avg	PF	FO	A	TO	Blk	Stl	Pts	Avg
2013-14																									
<b>TOTAL</b>																									



**41 — MORGAN BAILEY**

6-2 • JUNIOR • FORWARD • OREM, UTAH (TIMPANOGOS HS)

**In 2013-14**

- For the fourth straight time tallied double digits in points with 13 in the road win at CSUN on 11/23/13, tying for season bests ...the 6 field goal made and the 14 attempted are the most to date ... pulled down 4 rebounds, had 2 assists and 1 steal
- In the overtime home win vs. Boston College on 11/16/13 picked up her second straight double-double tallying 11 points and pulled down a game- and career-high 14 rebounds while also tying for career bests in assists with 3
- Recorded her first double-double of the year with 10 points and 10 rebounds in the road game at UNLV on 11/12/13 ... the boards were season and game highs
- Picked up first game scoring in double figures with 13 vs. So. Dakota State on 11/8/13 while tying her career best 3 steals and also grabbed 6 boards

**2013-14 SEASON HIGHS**

PTS	13, twice, last at CSUN – 11/23/13
REB	14, vs. Boston College – 11/16/13
AST	3, vs. Boston College – 11/16/13
STL	3, vs. So. Dakota St. – 11/8/13
BLK	1, vs. So. Dakota St. – 11/8/13
FGM	6, at CS Northridge– 11/23/13
FGA	14, at CS Northridge – 11/23/13
3PM	
3PA	
FTM	5, vs. So. Dakota St. – 11/8/13
FTA	9, vs. So. Dakota St. – 11/8/13

**2012-13 (summary)**

- Recorded 13 games scoring in double figures and had two double-doubles on the year
- Picked up season highs in points: 18 at Gonzaga on 1/17/13, rebounds: 13 vs. USF on 1/5/13, assists: 3, twice, last vs. USD on 2/7/13, steals: 3, three times, last vs. USD on 2/7/13, blocks: 3 vs. Portland on 2/21/13
- Had 3 blocks in the home game vs. Portland for career highs in that category
- Tied for game highs in points with 18 at Gonzaga while grabbing 5 rebounds, the points are season bests
- Recorded her first career double-double with 12 points and 10 rebounds at Dartmouth ... the boards were game highs
- Started in her first college game vs. Weber State tallying 11 points, 7 rebounds while getting career highs in assists with 3 and in steals with 3

**CAREER HIGHS**

PTS	18, at Gonzaga – 1/17/13
REB	13, vs. San Francisco – 1/5/13
AST	3, three, last, vs. B. C. – 11/16/13
STL	3, four, last, vs. S.Dakota St. – 11/8/13
BLK	3, vs. Portland – 2/21/13
FGM	7, vs. Western New Mex. – 12/29/12
FGA	13, twice, last, at PEP – 2/16/13
3PM	1, three, last, vs. West. N.M.–12/29/12
3PA	1, three last, vs. West.N.M. – 12/29/12
FTM	5, vs. So. Dakota St. – 11/8/13
FTA	9, vs. So. Dakota St – 11/8/13

**Personal**

- Parents are Roxanne Bailey and Carl Bailey
- Has one brother and one sister
- Born in Alexandria, Virginia
- Uncle is Thurl Bailey

**MISCELLANEOUS**

	13-14	Career
Double-Figure PTS	3	16
10-plus Pts	3	16
Double-Doubles	2	4
3-plus AST	1	3
3-plus STL	1	4
3-plus 3-point FG		0
Scoring Leader		3
Rebound Leader	1	5
Assist Leader		0

**BAILEY CAREER STATISTICS (ALL GAMES)**

Year	GP	GS	Min	Avg	FG	FGA	Pct	3FG	FGA	Pct	FT	FTA	Pct	Off	Def	TR	Avg	PF	FO	A	TO	Blk	Stl	Pts	Avg
2011-12	25	0	137	5.5	17	50	.340	2	10	.200	8	14	.571	17	19	36	1.4	13	0	5	16	4	5	44	1.8
2012-13	34	7	644	18.9	117	241	.485	7	13	.538	28	57	.491	43	126	169	5.0	64	1	23	47	24	20	269	7.9
2013-14	5	5	137	27.4	20	48	.417	0	0	.000	9	18	.500	17	20	37	7.4	8	0	9	9	1	6	49	9.8
<b>TOTAL</b>																									

**BAILEY CAREER STATISTICS (CONFERENCE GAMES)**

Year	GP	GS	Min	Avg	FG	FGA	Pct	3FG	FGA	Pct	FT	FTA	Pct	Off	Def	TR	Avg	PF	FO	A	TO	Blk	Stl	Pts	Avg
2011-12	13	0	51	3.9	7	21	.333	1	4	.250	1	2	.500	7	6	13	1.0	4	0	3	7	2	3	16	1.2
2012-13	16	1	307	19.2	49	112	.438	4	8	.500	12	30	.400	23	55	78	4.9	33	1	13	24	14	9	114	7.1
2013-14																									
<b>TOTAL</b>																									



**42 — SAVANNAH IRWIN**

6-5 • FRESHMAN • CENTER • CARLSBAD, CA. (LA COSTA CANYON HS)

**In 2013-14**

**Before BYU**

- Two-time letterwinner in basketball
- Two-time Second Team All CIF
- League MVP
- Team captain
- 2013 CIF Player of the Game
- 2013 Senior All-Star Team
- Second Team All-State
- High school team finished 32-3 in 2013, the best girl's basketball record
- Holds school's all-time record in blocks (232)
- Averaged 13.4 ppg, 10.2 rpg, 3.7 bpg, 1.0 spg
- Played for Orange County Elite Basketball Club

**Personal**

- Born in Solana Beach, California
- Parents are Lawrence and LeAnn
- Has one sister
- Majoring in exercise science and minoring in spanish

**2013-14 SEASON HIGHS**

PTS	
REB	
AST	
STL	
BLK	
FGM	
FGA	
3PM	
3PA	
FTM	
FTA	

**CAREER HIGHS**

PTS	
REB	
AST	
STL	
BLK	
FGM	
FGA	
3PM	
3PA	
FTM	
FTA	

**MISCELLANEOUS**

	13-14	Career
Double-Figure PTS		
10-plus Pts		
Double-Doubles		
3-plus AST		
3-plus STL		
3-plus 3-point FG		
Scoring Leader		
Rebound Leader		
Assist Leader		

**IRWIN CAREER STATISTICS (ALL GAMES)**

Year	GP	GS	Min	Avg	FG	FGA	Pct	3FG	FGA	Pct	FT	FTA	Pct	Off	Def	TR	Avg	PF	FO	A	TO	Blk	Stl	Pts	Avg	
2013-14																										
<b>TOTAL</b>																										

**IRWIN CAREER STATISTICS (CONFERENCE GAMES)**

Year	GP	GS	Min	Avg	FG	FGA	Pct	3FG	FGA	Pct	FT	FTA	Pct	Off	Def	TR	Avg	PF	FO	A	TO	Blk	Stl	Pts	Avg	
2013-14																										
<b>TOTAL</b>																										

## Walk-on Bios

**12 – MADDY ZIERING-SMITH**

5-5 • FRESHMAN • GUARD • LAGUNA BEACH, CA (LAGUNA BE. HS)

In 2013-14

**Before BYU**

- Three-time letterwinner in basketball
- 2012-13 Team MVP
- Two-time First Team
- Two-time All-League
- Third Team All-County
- First Team All CIF
- Team was South Coast League Champions
- Senior year averaged 18.0 points and 8.0 assists, had an 80 percent free throw percentage
- Played for Swoosh Basketball Club
- Lettered in golf
- MVP in golf
- First Team All-League
- Second Team All-County

**Personal**

- Parents are Debra and Michael Smith
- Has four sisters and five brothers
- Father Michael is a former BYU basketball All-American

**14– HANNAH PACKARD**

5-5 • FRESHMAN • GUARD • SPRINGVILLE, UT (SPRINGVILLE HS)

In 2013-14

**Before BYU**

- Two-time letterwinner in basketball
- 2012-13 named Most Dedicated Female Athlete
- Team won state championships in 2012-13
- Team finished second in state championships in 2011-12
- Three-year letterwinner in softball
- 4.0 GPA
- National Honor Society
- Named Academic All-State for basketball and softball

**Personal**

- Parents are Mark and Wendy
- Has two sisters

**31 – HANNAH ROSE**

5-9 • FRESHMAN • GUARD • BEAVERTON, OR (SOUTHRIDGE HS)

In 2013-14

**Before BYU**

- Four-year letterwinner in basketball
- Two-time team captain
- Two-time All-League
- Team won state championships in 2010
- Four-year letterwinner in soccer
- Team captain in 2012-13
- 2013 All-League honoree
- National Honor Society
- Academic All-Star in basketball and soccer
- Southridge Scholar Athlete

**Personal**

- Parents are Scott and Kristin
- Has three brothers
- Uncle is BYU's men's basketball coach Dave Rose

**Brigham Young University**  
**Brigham Young Combined Team Statistics (as of Nov 26, 2013)**  
**All games**

<b>RECORD:</b>	<b>OVERALL</b>	<b>HOME</b>	<b>AWAY</b>	<b>NEUTRAL</b>
ALL GAMES	5-0	3-0	2-0	0-0
CONFERENCE	0-0	0-0	0-0	0-0
NON-CONFERENCE	5-0	3-0	2-0	0-0

##	Player	gp-gs	min	avg	Total		3-Point		F-Throw		Rebounds				pf	dq	a	to	blk	stl	pts	avg
					fg-fga	fg%	3fg-fga	3fg%	ft-fa	ft%	off	def	tot	avg								
05	HAMSON, Jennifer	5-5	141	28.2	36-59	.610	0-0	.000	26-35	.743	13	32	45	9.0	14	0	6	16	19	3	98	19.6
04	BEESTON, Kim	5-5	169	33.8	25-48	.521	20-37	.541	6-8	.750	2	22	24	4.8	8	0	25	10	4	8	76	15.2
21	EATON, Lexi	5-5	122	24.4	22-66	.333	6-22	.273	19-22	.864	9	13	22	4.4	12	0	11	14	3	4	69	13.8
41	BAILEY, Morgan	5-5	137	27.4	20-48	.417	0-0	.000	9-18	.500	17	20	37	7.4	8	0	9	9	1	5	49	9.8
11	HARRY, Xojian	5-0	65	13.0	11-22	.500	6-15	.400	0-0	.000	1	7	8	1.6	10	0	5	4	0	2	28	5.6
03	GARFIELD, Ashley	5-0	110	22.0	8-19	.421	0-1	.000	11-15	.733	10	24	34	6.8	10	0	6	7	3	5	27	5.4
10	ROVETTI, Stephanie	5-0	92	18.4	1-7	.143	0-1	.000	10-14	.714	3	14	17	3.4	7	0	18	11	3	5	12	2.4
23	MORRISON, Makenzi	5-0	33	6.6	4-8	.500	0-4	.000	4-5	.800	0	2	2	0.4	4	0	4	5	0	0	12	2.4
15	MAEDA, Kylie	5-5	106	21.2	4-11	.364	1-4	.250	0-0	.000	1	12	13	2.6	6	0	14	5	0	2	9	1.8
22	FULLER, Kristine	4-0	40	10.0	2-13	.154	0-4	.000	0-0	.000	2	3	5	1.3	4	0	1	4	0	0	4	1.0
34	ORTON, Micaelee	2-0	8	4.0	0-1	.000	0-0	.000	0-0	.000	1	2	3	1.5	0	0	0	1	0	0	0	0.0
01	STRATTON, Carly	1-0	2	2.0	0-0	.000	0-0	.000	0-0	.000	0	0	0	0.0	0	0	0	0	0	0	0	0.0
Team											5	11	16				2					
Total.....		5	1025		133-302	.440	33-88	.375	85-117	.726	64	162	226	45.2	83	0	99	88	33	34	384	76.8
Opponents.....		5	1025		114-328	.348	38-100	.380	59-74	.797	60	125	185	37.0	101	-	74	80	10	44	325	65.0

<b>TEAM STATISTICS</b>	<b>BY</b>	<b>OPP</b>	<b>Date</b>	<b>Opponent</b>	<b>Score</b>	<b>Att.</b>
SCORING	384	325	11/8/13	SOUTH DAKOTA ST.	w 81-53	648
Points per game	76.8	65.0	11/12/13	at UNLV	w 71-64	0
Scoring margin	+11.8	-	11/16/13	BOSTON COLLEGE	Wot 70-69	703
FIELD GOALS-ATT	133-302	114-328	11/23/13	at CSNorthridge	w 82-66	320
Field goal pct	.440	.348	11/26/13	WASHINGTON STATE	w 80-73	432
3 POINT FG-ATT	33-88	38-100	* = Conference game			
3-point FG pct	.375	.380				
3-pt FG made per game	6.6	7.6				
FREE THROWS-ATT	85-117	59-74				
Free throw pct	.726	.797				
F-Throws made per game	17.0	11.8				
REBOUNDS	226	185				
Rebounds per game	45.2	37.0				
Rebounding margin	+8.2	-				
ASSISTS	99	74				
Assists per game	19.8	14.8				
TURNOVERS	88	80				
Turnovers per game	17.6	16.0				
Turnover margin	-1.6	-				
Assist/turnover ratio	1.1	0.9				
STEALS	34	44				
Steals per game	6.8	8.8				
BLOCKS	33	10				
Blocks per game	6.6	2.0				
ATTENDANCE	1783	320				
Home games-Avg/Game	3-594	2-160				
Neutral site-Avg/Game	-	0-0				

<b>Score by Periods</b>	<b>1st</b>	<b>2nd</b>	<b>OT</b>	<b>Totals</b>
Brigham Young	186	188	10	384
Opponents	154	162	9	325



# BASKETBALL

2013-2014  
RADIO/TV ROSTER



**CARLY STRATTON** 1  
5-7 / SO. / G



**ASHLEY GARFIELD** 3  
5-10 / JR. / G



**KIM BEESTON** 4  
5-11 / SR. / G



**JENNIFER HAMSON** 5  
6-7 / SR. / C



**STEPHANIE ROVETTI** 10  
5-6 / JR. / G



**XOJIAN HARRY** 11  
5-11 / JR. / G, F



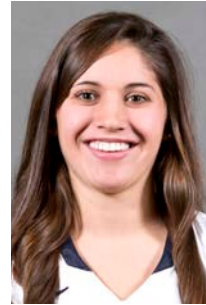
**MADDY ZIERING-SMITH** 12  
5-5 / FR. / G



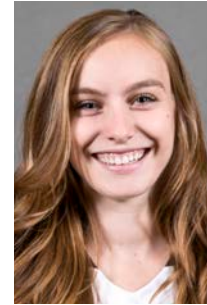
**HANNAH PACKARD** 14  
5-5 / FR. / G



**KYLIE MAEDA** 15  
5-5 / SO. / G



**CASSIE BROADHEAD** 20  
5-9 / FR. / G



**LEXI EATON** 21  
5-10 / SO. / G



**KRISTINE FULLER** 22  
5-11 / FR. / G, F



**MAKENZI MORRISON** 23  
5-8 / FR. / G



**HANNAH ROSE** 31  
5-9 / FR. / G



**MICAELEE ORTON** 34  
6-2 / FR. / F



**MORGAN BAILEY** 41  
6-2 / JR. / F



**SAVANNAH IRWIN** 42  
6-5 / FR. / C



**JEFF JUDKINS**  
HEAD COACH



**MELINDA BENDALL**  
ASSISTANT COACH



**RAY STEWART**  
ASSISTANT COACH



**DAN NIELSON**  
ASSISTANT COACH



**HALEY STEED**  
DIRECTOR OF WOMEN'S BASKETBALL OPS.