



Athletic Communications

30 Smith Fieldhouse • Provo, Utah • 84602
801-422-8948 • fax 801-422-0633

WOMEN'S BASKETBALL RELEASE

Game -#10 {BYU (4-5) @ Weber State (4-3), Dec.12, 2007, 12 p.m.}
Game - #11 {BYU (4-5) vs. UCLA (4-4), Dec. 15, 2007, 4 p.m.}

BYU 2007-08 Schedule/Results

DATE	OPPONENT	TIME/RESULT
N 9	@ UC Santa Barbara	W 61-50
N 13	@ Arkansas State	L 53-54
N 17	vs. Fresno State	W 78-59
N 20	vs. Hartford	L 59-70
N. 23	vs. Seton Hall	W 47-43
N 29	@ U Conn	L 34-80
D 1	@ Sacred Heart	L 44-49
D 5	vs. New Mexico State	L 54-52
D 8	vs. Utah Valley U.	W 72-52
D 12	@ Weber State	12 p.m.
D 15	vs. UCLA	4 p.m.
D 29	@ Utah State	5 p.m.
J 12	@ Colorado State *	2 p.m.
J 16	vs. UNLV *	7 p.m.
J 19	vs. Utah * (Mtn.)	7 p.m.
J 23	@ SDSU *	7 p.m.
J 26	@ New Mexico *	2 p.m.
J 30	vs. Air Force *	7 p.m.
F 2	vs. Wyoming *	4 p.m.
F 5	@ TCU * (Mtn.)	7 p.m.
F 13	vs. CSU *	7 p.m.
F 16	@ UNLV *	7 p.m.
F 19	@ Utah * (CSTV)	8 p.m.
F 23	vs. San Diego St. *	2 p.m.
F 26	vs. UNM * (Mtn.)	6 p.m.
M 1	@ Air Force *	2 p.m.
M 5	@ Wyoming * (Mtn.)	6 p.m.
M 8	vs. TCU * (CSTV)	TBA
M 6-10	@ MWC Champs.	TBA
M 22-24	@ NCAA 1st/2nd Round	TBA
M 29-31	@ NCAA Regionals	TBA
A 6-8	@ Final Four	TBA

*MWC Games
All Times Local to Site

BYU Athletic Communications

Basketball Contact: Norma Collett
E-Mail: norma_collett@byu.edu
Office Phone: 801-422-4908
Office Fax: 801-422-0633
Mobile Phone: 801-372-0989
Press Row Phone: 801-422-3675
Web Site: byucougars.com

THIS WEEK IN WOMEN'S BASKETBALL

With a 4-5 record, the BYU women's basketball team continues its non-conference schedule with a road game at Weber State (4-3) on Wed., Dec. 12. Then they host Pac-10 powerhouse UCLA (4-4) on Sat., Dec. 15 p.m. in a 4 p.m. tip.

Game #10- 12/12/07: BYU @ Weber St. **Time:** 12 p.m. MT **Arena:** Dee Events Ctr.
Game #11- 12/15/07: BYU vs. UCLA **Time:** 4:00 p.m. MT **Arena:** Marriott Ctr.

Following the Cougars –

Television: Saturday's game between the Cougars and Bruins will air live on the Mtn. Mike Evans and Andrea Lloyd will call the action

Radio: Both of the games this week will air live on KOVO 960 AM.

Internet: They will also be heard live on the internet at <http://www.byuradio.org/streaming> Jay Monsen will call the action for both games.

Live stats: No live stats will be available for the Weber State game. All of the games can be accessed with the live stats link by logging on to: www.byucougars.com/basketball_w/

Cougar All-Access: Those who have signed up for Cougar All-Access can also view the games on their computers

BYU Probable Starters

No.	Name	Pos.	Ht.	Yr.	PPG	RPG
03	Jazmine Foreman	G	5-5	Fr	2.9	1.0
30	Mallary G. Carling	G	5-10	Sr	13.6	3.0
32	Shawnee Slade	F	5-11	Jr	7.6	6.7
45	Keilani Moeaki	F	6-2	Fr	5.3	4.6
52	Lauren R. Varley	C	6-3	Sr	9.3	8.4

Reserve Players

No.	Name	Pos.	Ht.	Yr.	PPG	RPG
22	Mindy Nielson	G	5-10	Fr	5.1	2.3
54	Cassie King	F	6-3	Jr	4.3	2.8
23	Coriann Wood	F	6-1	Fr	4.1	2.7
14	Sarah Red	G/F	5-11	Jr (rs)	2.3	0.0
05	Ashley Cheesman	F	6-0	Sr	1.8	2.0
13	Jaime Judkins	G	5-6	So	1.3	0.6
0	Lauren Nichols	F	6-0	Fr (rs)	0.6	0.2
55	Megan Marks	F	6-2	Fr	0.3	1.3

BYU Quick Facts

Basketball Information
 Head Coach Jeff Judkins (Utah, 1978)
 Office Phone 801-422-8035
 Best time to call 9-10:00 a.m. daily
 Record at BYU/Yrs. 130-67/6
 Career Record: same
 Assistant Coach Alli Bills
 Office Phone 801-422- 1548
 Assistant Coach Jonas Chatterton
 Office Phone 801-422 -8155
 Assistant Coach Stacy Jensen
 Office Phone 801-422-7682

Team Facts

2007-08 Record: 4-5, 0-0
 2006-07 Record 23-10,12-4
 2006-07 Post Season 0-1, NCAA
 Starters Returning/Lost 2/3
 Letterwinners Returning/Lost 6/3
 Newcomers 8

Roster Breakdown

STARTERS RETURNING: (2)
 Mallery Gillespie: 5-10 S, G (13.6 ppg, 3.7 rpg)
 Lauren Riley: 6-3 Sr, C (7.4 ppg, 6.5 rpg)

STARTERS LOST: (3)
 Dani Wright: 6-3 Sr, F (13.4 ppg, 6.8 rpg)
 Melinda Johnsen: 5-10 Sr, F/G (6.0 ppg, 2.8 rpg)
 Jennie Keele: 5-10 Sr, G (6.2 ppg, 3.7 rpg)

LETTERWINNERS RETURNING: (4)
 Ashley Cheesman: 6-0 Sr, F (2.2 ppg, 1.7 rpg)
 Jaime Judkins: 5-6 So, G (0.2 ppg, 0.6 rpg)
 Cassie King: 6-3 Jr, C (3.5 ppg, 2.6 rpg)
 Shawnee Slade: 5-11 Jr, G/F (7.8 ppg, 4.5 rpg)

OTHERS RETURNING: (2)
 Lauren Nichols: 6-0 Fr, G (RS last season)
 Sarah Red: 5-11 So, G/F (RS last season)

LETTERWINNERS LOST: (3)
 Dani Wright: 6-3 Sr, F (13.4 ppg, 6.8 rpg)
 Melinda Johnsen: 5-10 Sr, F/G (6.0 ppg, 2.8 rpg)
 Jennie Keele: 5-10 Sr, G (6.2 ppg, 3.7 rpg)

NEWCOMERS: (6)
 Stephanie Buhler: 6-0 Fr, F - Oregon City, OR/Oregon City HS
 Jazmine Foreman: 5-5 Fr, G - Vancouver, WA/Hudson's Bay HS
 Megan Marks: 6-2 Fr, F - South Jordan, UT/Bingham HS
 Keilani Moeaki: 6-2 Fr, F - Warrenville, IL/Wheaton Wville S HS
 Mindy Nielson: 5-10 Fr, G - Centennial, CO/Regis Jesuit HS
 Coriann Wood: 6-1 Fr, F - Othello, WA/Connell HS

Team Stats – 2007-08

- ✓ Shooting from the field: (.384, 187-487)
- ✓ Shooting from the free-throw line: (.604, 84-139)
- ✓ Shooting from three-point line: (.271, 42-155)
- ✓ Average points per game: 55.6



BYU QUICK HITS

The team

- ☐ Two starters are among the six letterwinners returning for the 2007-08 season. The team also returns two redshirts in addition to six very talented newcomers
- ☐ The seniors are MWC Second Team honoree guard Mallery Gillespie-Carling and MWC Honorable Mention Lauren Riley-Varley. Both were also named to the 2007 MWC All-Tournament Team.
- ☐ Among the letterwinners are junior forward/guard combo Shawnee Slade, senior forward Ashley Cheesman and junior center Cassie King. The trio return with the most playing experience and an understanding of coach Judkins' game plan. Guard Jamie Judkins who also comes in with significant playing time experience.
- ☐ Two redshirts who were on the team last year, freshman forward Lauren Nichols and sophomore guard Sarah Red, a transfer from the University of Utah, will also provide solid experience on the team as newcomers.
- ☐ Six new incoming freshmen will take to the court in 2007-08. They are:
 Stephanie Buhler: 6-0, F, Oregon City, OR/Oregon City HS
 Jazmine Foreman: 5-5, G, Vancouver, WA/Hudson's Bay HS
 Megan Marks: 6-2, F, South Jordan, UT/Bingham HS
 Keilani Moeaki: 6-2, F, Warrenville, IL/Wheaton Warrenville South HS
 Mindy Nielson: 5-10, G, Centennial, CO/ Regis Jesuit HS
 Coriann Wood: 6-1, F, Basin City, WA/Connell HS

↔ 2007-08 SEASON HIGHLIGHTS AND NOTABLES ↔

TEAM

- ↔ The captains on the 2007-08 season are seniors Mallery Gillespie-Carling and Lauren Riley-Varley
- ↔ When playing on the road this season, BYU has a 1-3 record.
- ↔ The 55 rebounds by the Cougars vs Fresno State on 11/17/07 are a season high and rank tied for third place in the program's history.

**USA Today ESPN Div. I Top 25 Coaches Poll --
Dec. 4, 2007**

Rk. School

1. Tennessee (6-0)
2. Connecticut (6-0)*
3. Rutgers (5-1)
4. North Carolina (9-1)
5. Stanford (7-1)
6. Maryland (10-1)
7. LSU (6-2)
8. Georgia (8-0)
9. Oklahoma (4-2)
10. Baylor (6-0)
11. Texas A&M (6-1)
12. California (7-1)
13. West Virginia (7-1)
14. Auburn (8-0)
15. Duke (5-3)
16. DePaul (6-0)
17. Vanderbilt (7-2)
18. Ohio State (6-2)
19. Arizona State (4-3)
20. Notre Dame (6-1)
21. George Washington (6-3)
22. Wyoming (6-0)
23. Michigan State (6-2)
24. NC State (8-1)
25. Texas (6-2)

*Denotes 07-08 Opponent. Receiving Votes: Utah, Hartford

2007-08 BYU's record when...

BYU leads at half	4-2
Opponent leads at half	0-2
Score is tied at the half	0-1
Game goes into overtime	0-0
BYU shoots 50 % or better	1-0
Opponent shoots 50 % or better	0-2
BYU makes five or more 3-pointers	3-1
Opponent makes 5 or more 3-pointers	2-3
BYU outrebounds opponent	4-2
Opponent outrebounds BYU	0-3
Rebounds are equal	0-1
BYU has 16 and under turnovers	0-2
Opponent has 16 and under	0-5
BYU has 17-20 turnovers	2-1
Opponent has 17-20 turnovers	2-2
BYU has more than 20 turnovers	2-3
Opponent has more than 20 turnovers	1-0
Cougars play at home	3-2
Cougars play on the road	1-3
Cougars play at neutral site	0-0

⇒ The win over Fresno State improved BYU's all-time record in home openers to 24-11 and under coach Judkins is now 6-1 in home openers.

⇒ The 78 points and the 55 rebounds recorded in the win over Fresno State are the most in both categories to date.

⇒ In the win over Utah Valley, the team scored 72 points which is second best to date and the 20-point margin of victory is the most this season.

⇒ The 20 assists in the win over Utah Valley on 12/08/07 were the most to date.

⇒ In Saturday's Dec. 8th win over the Wolverines, the 17 steals are a new season best.

⇒ BYU scored 35 points in the first half vs. Utah Valley, the second most scored in a first half and the fourth most in any half to date.

⇒ Starting lineups:	Record
Foreman, Carling, Slade, Cheesman, Varley:	2-2
Foreman, Carling, Slade, King, Varley:	1-1
Judkins, Carling, Slade, Wood, Varley:	0-1
Foreman, Carling, Slade, Moeaki, Varley:	1-1

PLAYER

⇒ Center Lauren Riley-Varley picked up back-to-back double doubles in the first two games of this season. She tallied 14 points and 11 rebounds against UCSB and 16 points and 13 boards at Arkansas State. She led all players in the rebound category in those contests.

⇒ Varley's 16 points at Ark. State were season highs to date

⇒ Varley tops the list in rebounds for the team to date grabbing an average of 8.5 boards per contest.

⇒ Varley scored 12 points in the two-point 52-54 loss to New Mexico State on 12/05/07 marking her third double figure game this season and her 22nd career double digit contest.

⇒ Mallary Gillespie-Carling has scored in double figures in 54 games during her career, seven so far this season and the last three straight.

⇒ Carling is the team's assist leader so far this year dishing out a total of 38.

⇒ Freshman Mindy Nielson tallied a career-high 11 points vs. Fresno State on 11/17/07.

⇒ Nielson picked up season and career highs in blocks (5), steals (5), rebounds (6) vs. Utah Valley on 12/08/07.

- Shawnee Slade led the team in scoring with 15 points vs. Utah Valley on 12/08/07 marking her 13th career double digit game and her third this season. At Connecticut on 11/29/07, she was also the team's leading scorer with 10 points, marking her 12th career double figure contest.
- Slade grabbed a new season and career high 11 rebounds vs. New Mexico State on 12/05/07. The 11 boards were team and game highs as well.
- Freshman Keilani Moeaki tallied a career- and game-high 19 points in the game vs. Hartford
- Freshman Coriann Wood picked up season and career highs in points and rebounds in the game at UConn on 11/29/07 with eight points and five rebounds. She had her first collegiate start at Sacred Heart on 12/01/07.
- Freshman Jazmine Foreman dished out a new season and career high in assists with eight vs. Utah Valley on 12/08/07.

2007-08 MOUNTAIN WEST CONFERENCE

In October the Cougar team was picked to finish third in the MWC Preseason Poll. Senior Mallary Gillespie Carling was picked to the five member Preseason All-Conference Team.



Rk. Team (1st place votes)	Points
1. Wyoming (24)	203
2. TCU (2)	188
3. BYU (1)	182
4. New Mexico (3)	174
5. Utah	158
6. UNLV	109
7. San Diego State	93
8. Colorado State	53
9. Air Force	37

Preseason All-Conference Team

Name,	Class	Pos.	Institution
Adrienne Ross	Sr.	G	TCU
Dionne Marsh	Sr.	F	New Mexico
Hanna Zavec	Sr.	F	Wyoming
Morgan Warburton	Jr.	G	Utah
Mallary Gillespie-Carling	Sr.	G	BYU

2007-08 MWC Women's Basketball Standings 12/10/07

Team (Rank)	Conf. Games	All Games
Wyoming (21/22)	0-0	8-1
San Diego State	0-0	7-1
New Mexico (nr/rv)	0-0	7-2
Utah (rv/rv)	0-0	6-3
BYU	0-0	4-5
TCU	0-0	4-5
Air Force	0-0	4-5
UNLV	0-0	3-6
Colorado State	0-0	2-8

Cougars in the MWC Stats as of 12/10/07

Team Stats	All Games	MWC Games
Scoring Offense	9th	n/a
Scoring Defense	3rd	n/a
Scoring Margin	6th	n/a
Free Throw %	9th	n/a
Field Goal %	8th	n/a
Field Goal % Defense	3rd	n/a
3-PT Field Goal %	8th	n/a
3-PT Field Goal % Defense	3rd	n/a
Rebounding Offense	2nd	n/a
Rebounding Defense	7th	n/a
Rebounding Margin	5th	n/a
Blocked Shots	5th	n/a
Assists	6th	n/a
Steals	6th	n/a
Turnover Margin	9th	n/a
Assist/Turnover Ratio	6th	n/a
Offensive Rebounds	7th	n/a
Defensive Rebounds	2nd	n/a
3-PT Field Goals Made	6th	n/a

Individual Stats	All Games	MWC Games
Scoring	10th-t M.Gillespie-Carling (13.6)	n/a
	26th L. Riley-Varley (9.3)	n/a
	28th-t S.Slade (7.6)	n/a
Rebounding	2nd L.Riley-Varley (8.4)	n/a
	10th-t S.Slade (6.7)	n/a
Field Goal %	2nd L.Riley-Varley (.548, 40-73)	n/a
Assists	5th M. Gillespie-Carling (3.33)	n/a
	14th J. Foreman (2.56)	n/a
Steals	13th-t M. Gillespie-Carling (1.33)	n/a
	13th-t M. Nielson (1.33)	n/a
3-PT Field Goal %	15th S. Slade (.333, 10-30)	n/a
3-PT Field Goals Made	3rd-t M.Gillespie-Carling (2.22)	n/a
Blocked Shots	6th L. Riley-Varley (1.44)	n/a
Assist/Turnover Ratio	6th M. Gillespie-Carling (0.79)	n/a
Offensive Rebounds	4th S.Slade (3.11)	n/a
	6th-t L. Riley-Varley (2.78)	n/a
Defensive Rebounds	1st L.Riley-Varley (5.67)	n/a

ABOUT THIS WEEK'S OPPONENTS

WEBER STATE UNIV. - Ogden, Utah at 12 p.m. (12/12/07)

Weber State has compiled a 4-3 record to date with a 3-0 record at home including back-to-back wins over Eastern Michigan and CSU. The Wildcats returns two starters and nine letterwinners from a team that finished with a 17-14 record last season and a second place finish in the Big Sky Conference. WSU has two players scoring in double digits led by senior forward Sara Tuomi's 16.4 points and a game high 6.4 boards per game. Senior guard Ahkiah Hunter follows with 10.4 points and grabs 4.0 boards per contest. Tonya Schnibbe tops the list in assists with 36 to date. Carla Taylor is in her 20th year as the Wildcats head coach where she has compiled a 274-268 record to date.

Weber State Probable Starters

Pos.	#	Name	Ht	Yr	PPG	RPG
F	05	Sara Tuomi	6-0	Sr	16.4	6.4
F	45	Emily Thatcher	6-1	Fr	2.7	4.7
C	11	Tashina Taylor	6-2	Sr	7.6	5.7
G	23	Ahkiah Hunter	5-6	Sr	10.4	4.0
G	24	Tonya Schnibbe	5-6	So	7.7	3.4

Stat Comparisons

	BYU	WSt.
Field Goals:	.384	.390
Free Throws:	.604	.757
Three-Pointers:	.271	.356
Points Per Game:	55.6	59.0
Rebounds Per Game:	39.7	34.4

Series History

Record: 36-8 favoring BYU.

Last Meeting: Dec 14, 2006 in Provo where the Cougars got the 79-42 victory. When playing at the Dee Events Center, BYU has a 14-6 record with its most recent win, a 63-47 decision on Dec. 28, 2005.

UCLA - Provo, Utah at 4 p.m. (12/15/07)

The Bruins of UCLA come to Provo with a 4-4 record picking up wins over CS Northridge, Rice, Cal Poly and Southern. On the road the team is 1-2 to date. UCLA returns three starters and seven letterwinners. Four players are picking up double figure games led by senior forward Lindsey Pluimer with her 14.3 points and a team-high 7.8 rebounds per game. She's followed by freshman Nina Earl who's putting up 10.4 points and grabbing 2.9 boards. Regina Rodgers and Doreana Campbell score 10.0 points each with 5.5 boards from Rodgers and 4.8 from Campbell. Head Coach Kathy Olivier begins her 15th season at the helm of the UCLA program where she has a 220-197 record to date.

UCLA Probable Starters

Pos.	#	Name	Ht	Yr	PPG	RPG
F	14	Lindsey Pluimer	6-4	Sr	14.3	7.8
F	21	Doreana Campbell	5-10	Fr	10.0	4.8
C	34	Regina Rogers	6-3	Fr	10.0	5.5
G	03	Darxia Morris	5-8	Fr	8.5	2.1
G	02	Tierra Henderson	5-10	Jr	8.3	4.3

Stat Comparisons	BYU	UCLA
Field Goals:	.384	.423
Free Throws:	.604	.629
Three-Pointers:	.271	.378
Points Per Game:	55.6	77.6
Rebounds Per Game:	39.7	47.4

Series History

Record: 3-8 favoring UCLA.

Last Meeting: The Cougars and Bruins played at Pauley Pavilion on Nov. 22, 2005 where BYU picked up the 71-67 win. UCLA has not played in the Marriott Center since a Nov. 25, 2000 game where they lost to the Cougars 53-68. The Bruins have a 2-1 record in Provo with their last win a 77-69 victory on Dec. 17, 1987.

MEDIA AVAILABILITY

Team Practice Times - at home

📅 The team practices are held at the Marriott Center MWF from 11:30 a.m., to 1:30 p.m. On Tuesday's, practice is scheduled from 1 to 3 p.m., and on Thursday's from 11:30 to 2 p.m.

📅 Coach

Judkins and players are available for interviews prior to or after their practices. All interviews are scheduled in advance. Norma Collett is the Basketball Communications Director for the team and can be contacted by phone or email.

Contact at -- office: 801-422-4908, cell: 801-372-0989 and email: norma_collett@byu.edu

LOOKING AHEAD

BYU has a short Christmas break before finishing its nonconference season at Utah State on Dec. 29. Tip off is set for 5 p.m.

January brings the MWC regular season and defending MWC Regular Season Champs., BYU is set to defend its league title. The Cougars open MWC play with a 2 p.m., contest at CSU on Jan. 12, then return home to host UNLV Jan. 16 and Utah Jan. 19. Start times for the home games are 4 and 7 p.m., respectively.



Head Coach - Jeff Judkins
Overall Record: 130-67
2007-08: 4-5

2007 MWC Coach of the Year Jeff Judkins begins his seventh year as head coach of the women's basketball program, after garnering back-to-back MWC

Coach of the Year honors. Prior to heading up the women's program, he served one year (1999-2000) as Director of Basketball Operations for the BYU men's team. In 2000 he became an assistant coach on the women's team.

Last year the BYU team compiled a 23-10, 12-4 record, made its eighth NCAA tournament appearance, and second consecutive. The team also won the MWC Regular Season title for the second straight time. Dani Wright was named MWC Co-Player of the Year. Her honor marks back-to-back years that a BYU player has received the honor. Ambrosia Anderson received the same award during the 2005-06 campaign.

Two seasons ago under Judkins leadership, the Cougars compiled their best finish in school history with a 26-6 record, clinched their first MWC regular season title since 1992 and received a no. 7 seed in the NCAA tournament, the highest seed for any BYU program. For the first time since the 2002-03 season, the team and its 13-1 record to start the year broke into the women's basketball collegiate polls, ranked No. 23 by the AP Poll and the USA Today/ESPN/WBCA Coaches Poll. They would rank as high as 18 and 16 in the two respective polls, finishing the year at No. 20. Last season Judkins picked up his 100th win, a 69-67 victory over CSU on Mar. 2, the same time the team clinched the league's regular season title.

Under Judkins tutelage, the women's basketball program has had consistent success with four postseason appearances including three NCAA Championships, guiding the team to its first ever Sweet Sixteen finish in 2002. In 2005, the 19-11 team played in the first round of the WNIT. Judkins has also coached two All-Americans in Erin Thom and Ambrosia Anderson. Both have gone on to play in the WNBA for the New York Liberty. Thom has been with the team for the past four years while Anderson just completed her first year playing professionally.

Coach Judkins has won at least 17 games every year but one since becoming the women's head coach. With his 23 wins last season, he has recorded three 20 win seasons and two MWC Regular Season titles.

The longtime University of Utah coach and player came to Provo with a proven record of success dating back to his high school days at Highland HS in Salt Lake City. An all-state selection in basketball, football and baseball, Judkins went on to play for the University of Utah from 1974-78.

While playing at Utah, Judkins helped lead the Utes to one conference championship and two berths in the NCAA tournament. He was a second-team academic All-American and three-time District VII academic selection. He also earned three first team All-WAC honors and was a member of the 1977 United States World Games team that captured the gold medal.

Judkins also played five years in the National Basketball Association for the Boston Celtics, Portland Trailblazers, Detroit Pistons and Utah Jazz. He was a second-round pick of the Celtics in 1978, the same year the Celtics selected Larry Bird with the sixth pick overall.

After his NBA career, he returned to Utah in 1989 and was an instrumental part of that program's success during his 10 years, recruiting such players as Keith Van Horn, Andre Miller, Mike Doleac, Hanno Mottola, Alex Jensen, Trent Whiting, Garner Meads, Jeff Johnsen and Britton Johnsen. Judkins, graduated from the University of Utah in 1978 with a degree in health and physical education. He and his wife Mary Kaye are the parents of five children: Jessica (27), (married to Paul), Jordan (25), Jenna (23), Jaime, who plays on the basketball team, (20), and Jaxson (17). Jenna plays on the volleyball team at BYU.

Hobbies: Waterskiing, horseback riding, hunting, golf, softball, and watching ESPN.

Judkins Coaching Record			
School	Yrs.	Rec.	Postseason
Utah*	1990-99	250-76	
BYU	2001-02	24-9	NCAA Sweet 16
BYU	2002-03	19-12	NCAA 1st Round
BYU	2003-04	15-14	DNC
BYU	2004-05	19-11	WNIT 1st Round
BYU	2005-06	26-6	NCAA 2nd Round
BYU	2006-07	23-10	NCAA 1st Round
* as an assistant to the men's team			

BYU Women's Basketball 2007-08 Numerical Roster

No.	Name	Pos.	Ht.	Cl.	Exp.	Hometown/Previous School
0	Lauren Nichols	F	6-0	Fr	HS	Irvine, CA/Hesperia HS
3	Jazmine Foreman	G	5-5	Fr	HS	Vancouver, WA/Hudson's Bay HS
5	Ashley Cheesman	F	6-0	Sr	3V	Orem, UT/Mountain View HS/SDSU
13	Jaime Judkins	G	5-6	So	1V	Salt Lake City, UT/Skyline HS
14	Sarah Red	G/F	5-11	Jr	1V	Provo, UT/Timpview HS/Utah
21	Stephanie Buhler	F	6-0	Fr	HS	Oregon City, OR/Oregon City HS
22	Mindy Neilson	G	5-10	Fr	HS	Centennial, CO/Regis Jesuit HS
23	Coriann Wood	F	6-1	Fr	HS	Basin City, WA/Connell HS
30	Mallary Gillespie-Carling	G	5-10	Sr	3V	Orem, UT/Mountain View HS
32	Shawnee Slade	G/F	5-11	Jr	2V	Taylorville, UT/Taylorville HS
33	Haley Hall	G	5-4	Fr	1V	Syracuse, UT/Clearfield HS
45	Keilani Moeaki	F	6-2	Fr	HS	Warrenville, IL/Wheaton Warrenville South HS
52	Lauren Riley-Varley	C	6-3	Sr	3V	San Clemente, CA/San Clemente HS
54	Cassie King	C	6-3	Jr	2V	Provo, UT/Provo HS
55	Megan Marks	F	6-2	Fr	HS	South Jordan, UT/Bingham HS

Walkons

31	Amy Alletto	G	5-9	So	HS	Parker, CO/Ponderosa HS
12	Brooke Jackson	G	5-8	Fr	HS	Mesa, AZ/Mountain View HS
10	Marie Beck	G	5-8	Fr	HS	Oxnard, CA/Channel Islands HS
34	Marianne Bell	F	6-1	Fr	HS	Ashburn, VA/Stone Bridge/Bruton HS

Head Coach: Jeff Judkins

Assistant Coaches: Alli Bills, Jonas Chatterton, Stacy Jensen

Director of Basketball Operations: Dan Nielson

Athletic Trainer: Carolyn Billings

Team Manager: Erica Eyestone

RETURNING PLAYER BIOS

◆ Mallery Gillespie-Carling ◆

Guard

5-10, Senior

Vineyard, Utah

30



At BYU

SENIOR - (2007-08): Has started in all games ... in seven of the nine games to date she has scored in double figures recording her 54th career game with the 13 points vs. Utah Valley on 12/08/07 ... currently, she's the team's scoring leader and assist leader with an average of 13.6 points and a total of 38 assists.

JUNIOR - (2006-2007): Final player notes: Started in all games ... named to the 2007 MWC Championships All-Tournament Team ... honored with Second Team All-MWC honors ... ranks first on the team in scoring with a 13.6 points average, and in total points with 449... is third in assists with 93 and ties for third in steals with 35 ... finished with the best free throw percentage on the team (.859) ... has the top percentage in three-point field goal made and attempted with 76 made for a 2.3 average and attempts with 222 for a 6.7 average ... when playing in MWC regular season contests, finished the year ranked fourth in scoring, seventh in assists, third in free throw percentage, eighth in three-point field goal percentage and first in three-point field goals made, and was third in the assist/turnover ratio category ... in all MWC games, ranked eighth in scoring, fourth in free throw percentage, 10th in assists, third in three-point field goals made ... grabbed a new season high in rebounds with nine in the semifinal game of the MWC Champs., vs. Utah on 03/09/07 ... picked up new season and career highs in points with 31 @ Wyoming on 02/15/07 and was named MWC Player of the Week on 02/19/07 for that performance marking her third Player of the Week award this season and career ... was honored with her second MWC Player of the Week honor on Feb. 5, 2007 for her scoring performance vs TCU (21 pts, 3 rebounds, 4 assists, 8-8 at the free throw line) ... tallied a new career high in three-pointers made in a game with eight vs. Weber State on 12/14/06 garnered first ever MWC Player of the Week honor on 12/18/06 for her stellar performance vs. Weber State which included a total of 30 points, half of those were from three point range ... scored in double figures in 23 of the 33 games played.

Gillespie-Carling Stats:

Yr	G/GS	FG-FGA %	FT-FTA %	3-pts %	Pts.	Reb.	A.	St.	To.
05	30/13	80-204.392	20-26.769	49-134 .366	229	87	44	27	46
06	32/32	117-289.405	36-49.735	58-160 .363	328	121	96	44	69
07	33/33	144-383.376	76-88.864	75-214 .350	439	119	92	34	73
08	9/9	43-123 .350	16-20 .800	20-69 .290	122	27	30	12	38

Gillespie-Carling

Points:

Rebounds:

Assists:

3-PTFG's Made:

Steals:

Blocks:

Season Highs:

22 @ Sacred Heart 12/01/07

Career Highs:

31 @ Wyoming 02/15/07

10 vs. UNLV on 1/11/06

7 vs. UNM 02/02/06

8 vs. Weber St. 12/14/06

6 @ SDSU 02/22/06

2 @ Harvard 12/02/06

◆ **Lauren Riley-Varley** ◆

Center

6-3, Senior

San Clemente, CA

52



At BYU

SENIOR - (2007-08): Has started in all games to date ... picked up back-to-back double doubles in the first two games of this season tallying 14 points and 11 rebounds against UCSB and 16 points and 13 boards at Arkansas State ... she's the team's leading rebounder with an average of 8.4 per game ... has scored in double digits in three games to date, most recently 12 points vs. New Mexico State on 12/05/07.

JUNIOR - (2006-2007): Final player notes: Played in all games, started the final 26 ... named to the 2007 MWC Championships All-Tournament Team ... garnered Honorable Mention All-MWC honors ... ranks second in field goal percentage with .548 and is third in field goals made with a total of 108 for a 3.3 average ... finished the year in fourth place in both points (243) and in scoring average 7.4 points per game ... places second in rebounds and in rebound average with a total of 216 for a 6.5 average per contest ... is in first place in defensive rebounds and second in offensive rebounds with 4.1 and 3.2 respectively ... tops on the team in blocked shots with a total of 31 on the year ... during the MWC regular season schedule, finished second in rebounding, first in field goal percentage, tied for third place in blocked shots, was fourth in offensive boards and seventh in the defensive rebound category ... when playing in all MWC games, was second in the field goal percentage category, ninth in two other categories, rebounding and blocked shots, and fifth and 12th in offensive and defensive rebounds categories ... notched her fifth double double of the season and career with 10 points and 14 rebounds vs. UNM in the MWC Champ., on 03/10/07, the 14 rebounds were a new season high ... tallied her fourth double double of the season and fourth overall with the 11 points and 10 rebounds vs. SDSU on 02/24/07 ... picked up her fourth double double of the season and fourth overall with 18 points and 11 rebounds vs. UNM on 02/10/07 ... the 18 points in the game were new season and career highs as well ... she had five blocks vs. AFA on 02/08/07 which are new season and career highs ... recorded her third double double of her career and first this year with 10 points and 10 rebounds vs. TCU on 02/01/07 ... in the game @ AF on 1/06/07 grabbed 11 rebounds, her second best of the year ... in the game vs. CSUN on 12/09/06 grabbed a season and career high four steals ... scored in double figures in 10 games including five MWC contests.

Riley-Varley Statistics

Yr	G/GS	FG-FGA %	FT-FTA %	3-pts %	Pts.	Reb.	A.	St.	Bl.	To
05	28/0	23-51.451	10-21 .476	0-0 .000	56	47	3	2	8	24
06	32/0	84-165.509	25-67.373	0-0 .000	193	174	15	25	18	64
07	33/26	108-197.548	27-68.397	0-0 .000	243	216	22	20	31	77
08	9/9	40-73 .548	4-15 .267	0-0 .000	84	76	11	10	13	14

Riley-Varley Season Highs

Points: 16 vs. Ark.St. 11/13/07
Rebounds: 13 vs. Fresno St. 11/17/07, once more
Assists:
Steals:
Blocks: 3 @ UCSB 11/09/07

Career Highs:

18 vs. UNM 02/10/07
 14 vs. UNM 03/10/07
 3 vs. Oklahoma 03/20/06
 4 vs. CSUN 12/09/06
 5 vs. AF 02/08/07

◆ Ashley Cheesman ◆

Forward
6-0, Senior
Orem, Utah

5



At BYU

SENIOR - (2007-08): Started in the first four games of the year and has played in all games... she's averaging 1.8 points and 2.0 boards per contest.

JUNIOR - (2006-2007): Final player notes: Played in all games, and started in the second half of the game vs. AF in the MWC Tournament on 03/07/07 ... grabbed a new season high in rebounds with six vs. AF on 03/07/07 ... picked up a new season and career high in points with eight vs. UNLV on 01/20/07 ... as of 01/23/07 had the same number of points and rebounds on the year with (33) and finished the season with a total of 72 points, and 57 rebounds ... picked up five rebounds vs. ISU on 11/10/06 in her first contest as a Cougar ... played an average of 9.9 minutes per game with a season high of 22 in the AF game on 03/07/07.

Cheesman Statistics

Yr	G/GS	FG-FGA %	FT-FTA %	3-pts %	Pts.	Reb.	A.	BL.	St.	TO.
07	33/0	31-70.443	9-15.600	1-11 .091	72	57	14	3	11	29
08	9-4	7-17 .412	2-3 .667	0-0 .000	16	18	6	0	2	8

Cheesman
Points:
Rebounds:
Assists:
Steals:
Blocks:

Season Highs
8 vs. UCSB 11/09/07

Career Highs
8 vs. AF 03/07/07
6 vs. AF 03/07/07
2 vs. AF 03/07/07
2 vs. AF 03/07/07
3 vs. AF 03/07/07

◆ **Shawnee Slade**
Guard/Forward
5-11, Junior
Taylorsville, Utah

32



At BYU

JUNIOR - (2207-08): Has started in all games to date ... ranks third on the team in points with an average of 7.6 and second in rebounds grabbing 6.7 boards per contest ... grabbed a season and career high 11 rebounds vs. New Mexico St., on 12/05/07 ... tallied a team high 10 points @ UConn on 11/29/07 for her 12th career double figure game and the second this season ... picked up a season high 16 points vs. Fresno State on 11/17/07
SOPHOMORE - (2006-2007): Final player notes: Played in all games starting in the first seven ... ranks third in scoring and in rebounds with 7.8 points and 4.5 boards per game ... finished ranked third on the team in total rebounds with 150, third in both offensive and defensive rebounds with a total of 46 and 104 respectively ... ranked in fourth place in both assists with a total of 69 for a 2.1 average and in steals with a total of 35 for a 1.1 average ... is second on the team in field goal attempts (8.7) average and fourth in field goals made (3.1) average ... in the MWC Champs., game vs. UNM picked up her 10th game scoring in double digits with 14 ... in the game vs. TCU tallied her ninth double figure game ... she had three back to back double figure games with (13) at the AFA game on 01/06/07, (16) at UNM on 01/10/07, and (11) vs. Wyoming on 01/13/07 ... picked up a new season and career high four three-pointers in a game @ UNM on 1/10/07 ... in the league game vs. TCU on 02/01/07 picked up a new season high in assists with five ... had a season and career high four steals vs. AF on 01/06/07 ... notched her second season and career double double with 22 points and 10 rebounds vs. SCU on 11/22/06, the 22 points in that game were new season and career high ... also in that game went .916 (11-12) from the free throw line, a new season and career best ... picked up first career and season double double with 10 points and 10 rebounds vs. ISU on 11/10/06 ... in the same game had her first career start, and the 10 rebounds are a new career high ... named MWC Player of the Week on 11/10/06 for her achievements in the ISU game.

Statistics

Yr	G/GS	FG-FGA %	FT-FTA %	3-pts %	Pts.	Reb.	A.	St.	Bl.	To.
06	32/0	38-101.376	21-29.724	6-17 .353	103	70	19	16	1	22
07	32/7	99-278.356	29-53.547	22-76.289	249	147	67	35	9	63
08	9/9	26-85 .306	6-13 .462	10-30 .333	68	60	10	10	3	21

Slade

Points:
Rebounds:
Assists:
3-PT FG's Made:
Steals:
Blocks:

Season Highs

16 vs. Fresno St. 11/17/07
11 vs. New Mexico St. 12/05/07

Career Highs

22 vs. SCU 11/22/06
10 vs. SCU 11/22/06
5 vs. TCU 02/01/07
4 @ UNM 01/10/07
4 @ AF 01/06/07
2 vs. SDSU 02/24/07

◆ **Cassie King**
Center
6-3, Junior
Provo, UT

54



At BYU

JUNIOR - (2007-08): Has played in all nine games to date, starting in two ... averages 4.3 points and 2.8 rebounds per game.

SOPHOMORE - (2006-2007): Final players notes: Played in 32 of 33 games ... had doubled the number of points, assists and steals as of 01/29/07 from her freshman year ... finished the season with a total of 111 points, 12 assists and seven steals ... tied for fourth place in the blocked shots category with a total of 14 on the year ... averaged 11.6 points of playing time ... grabbed nine rebounds @ UVSC on 12/16/06 for a new season and career high in that category in that same game @ UVSC had two blocked shots ... picked up new season and career highs in points with 11 @ Harvard on 11/29/06.

Statistics

Yr	G/GS	FG-FGA %	FT-FTA %	3-pts %	Pts.	Reb.	A.	BL.	St.	TO.
06	23/0	7-22.318	9-12.750	0-1 .000	23	30	1	7	2	6
07	32/0	45-95.474	16-27.600	5-18.593	111	84	12	14	7	36
08	9/2	12-22 .545	15-20 .750	0-1 .000	39	25	5	4	1	9

King

Points:

Seson Highs

7 vs. Fresno St., 11/17/07, once more

Rebounds:

5 vs. Fresno St., 11/17/07

Steals:

Blocks:

Career Highs

11 @ Harvard 11/29/06

9 @ UVSC 12/16/06

2 @ Harvard 11/29/06

2 @ UVSC 12/16/06

◆ **Jaime Judkins**

Guard

5-6, Sophomore

Salt Lake City, UT

13



At BYU

SOPHOMORE - (2007-08): Has played in eight of the nine games to date, starting in the game at Sacred Heart on 12/01/07 ... is averaging 1.3 points and 0.6 rebounds per game ... is playing an average of 10.8 minutes per game.

FRESHMAN - (2006-2007): Final player notes: Played in a total of 23 games averaging 3.1 minutes of playing time ... of those 23 contests, eight were against conference opponents and she also saw action in the NCAA first round game vs. Louisville on 03/17/07 ... picked up a season high in points with three in the first game of the year vs. ISU on 11/10/06 ... grabbed a season and career high rebounds with three @ Baylor on 11/16/06 ... dished out a season and career high three assists vs. AF on 02/08/07, and in that same game played a new season and career high 13 minutes.

Statistics

Yr	G/GS	FG-FGA %	FT-FTA %	3-pts %	Pts.	Reb.	A.	BL.	St.	To.
07	23/0	1-6 .167	2-5 .400	1-4 .250	5	13	7	0	2	11
08	8/1	3-9 .333	2-2 1.000	2-8 .250	10	5	8	0	2	8

Judkins

Points:

Rebounds:

3-PT FG's made:

Assists:

Steals:

Season Highs

5 @ UCSB 11/09/07

3 @ UCSB 11/09/07

2 vs. Seton Hall 11/23/07

Career Highs

same

3 @ Baylor 11/16/06

3 vs. AF 02/08/07

1 vs. AF 02/08/07

◆ **Lauren Nichols** ◆

Forward
6-0, Freshman
Irvine, CA

0



At BYU

FRESHMAN - (2007-08): Has played in five of nine games to date ... is averaging 4.2 minutes of playing time.

FRESHMAN - (2006-2007): Redshirt

BEFORE BYU: Three-year basketball letterwinner ... Coach's Award senior year ... Mojave River League All-League ... Mojave River League Senior Award ... Outstanding Player Award at 13th Annual High Desert All-Star game ... team played in the semifinals of the CIF Southern Section Championships ... Principal's Honor Roll ... National Honor Roll ... Scholar Athlete ... 2006 attendant at the National Youth Leadership Forum on Defense, Intelligence, and Diplomacy ... 2005 Congressional Student Leadership Conference attendee ... two-year letterwinner in track and field and one year letterwinner in volleyball ... CIF Southern Section Volleyball Championships Quarterfinals in 2005 .. Division 2AA Track Championships in high jump, triple jump, long jump in 2005 and 2006 ... All-league in track and field in the high jump, triple jump, long jump and discuss ... Played for the West Coast Elite Basketball Club Team for two years ... 2004 AGS All-America Award ... 2004 AGS Super 60 ... 2002 AGS Elite 80 ... People to People Sports Ambassador ... Blue Chip All-Star ... Street and Smith All-America Honorable Mention ... USA Junior Nationals All-State High School competition attendee.

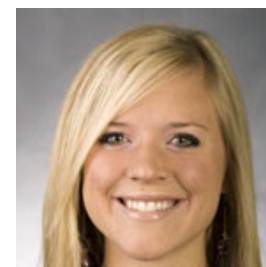
Statistics

Yr	G/GS	FG-FGA %	FT-FTA %	3-pts %	Pts.	Reb.	A.	BL.	St.	TO.
08	5/0	0-2 .000	3-6 .500	0-0 .000	3	1	1	1	1	3

◆ **Sarah Red** ◆

Guard/Forward
5-11, Junior
Provo, UT

14



At BYU

JUNIOR - (2007-08): Has seen action in three of the nine games played to date.

2006-07: (Redshirt)

OTHER COLLEGE - At Utah: Freshman (2004-05): Played in eight games for an average of 3.6 minutes ... of those games four were on the road ... picked up a season high three points @AF on 01/20/05 ... finished the season with an 12.5 field goal percentage and 50.0 free throw percentage.

BEFORE BYU: Four-year letterwinner in basketball ... earned all-state honors for Timpview High School as a senior ... played for a four-time regional championship team ... helped lead team to state championship game ... named MVPlayer at the Nike Tourn. of Champions ... played for Utah Pride an A.A.U. team ... four-year letterwinner in volleyball ... garnered all-state honors.

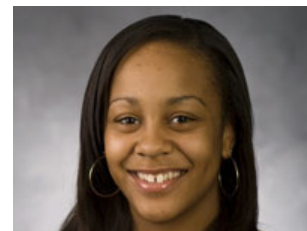
Statistics

Yr	G/GS	FG-FGA %	FT-FTA %	3-pts %	Pts.	Reb.	A.	BL.	St.	TO.
08	3/0	2-3 .667	2-2 1.000	1-1 1.000	7	0	0	0	0	1

INCOMING FRESHMEN PLAYER BIOS

◆ Jazmine Foreman ◆
Guard
5-5, Freshman
Vancouver, WA

3



AT BYU: FRESHMAN - (2007-08): Has started in eight of the nine games played to date ... is averaging 2.9 points and 1.0 rebounds and is the second best in assist, dishing out 23 so far this season ... picked up a new season and high in assists with eight vs. Utah Valley State on 12/08/07.

BEFORE BYU

Four-year letterwinner in basketball ... team MVP (2006-07) ... team captain ... First Team All-State ... graduated with honors ... honor roll ... played on Premier Elite Club Team for two years ... named to Oregon City All-Tournament Team.

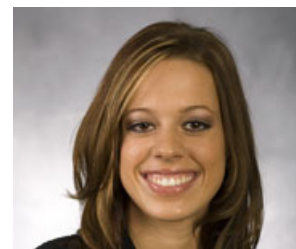
Statistics

Yr	G/GS	FG-FGA %	FT-FTA %	3-pts %	Pts.	Reb.	A.	BL.	St.	TO.
08	8/7	9-35 .257	1-4 .250	4-15 .267	23	9	15	0	5	16

Foreman	Season Highs	Career Highs
Points:	8 vs. Fresno St. 11/17/07	same
Rebounds:	3 @ Ark. St. 11/13/07	same
3-PT FG's made:		
Assists:	8 vs. Utah Valley 12/08/07	same
Steals:	3 vs. Seton Hall 11/23/07	same

◆ **Mindy Nielson** ◆
Guard
5-10, Freshman
Centennial, CO

22



AT BYU: FRESHMAN - (2007-08): Has played in all games to date averaging 21.1 minutes of playing time ... picked up season and career highs in rebounds (6), steals (5), and blocks (5) vs. Utah Valley on 12/08/07 ... picked up a season high 11 points vs. Fresno State on 11/17/07

BEFORE BYU

Four-year letterwinner in basketball ... First Team All-State ... high school Honor Roll ... played three seasons for Mile Hi Magic ... third place finish in Oregon City tournament ... First Team All-State.

Statistics

Yr	G/GS	FG-FGA %	FT-FTA %	3-pts %	Pts.	Reb.	A.	BL.	St.	TO.
08	9/0	17-48 .354	8-18 .444	4-16 .250	46	21	10	6	12	24

Nielson

Points:

Rebounds:

3-PT FG's made:

Assists:

Steals:

Blocks:

Season Highs

11 vs. Fresno St. 11/17/09

6 vs. Utah Valley 12/08/07

3 @ UCSB 11/09/07

5 vs. Utah Valley 12/08/07

5 vs. Utah Valley 12/08/07

Career Highs

same

same

same

same

same

◆ Keilani Moeaki ◆

Forward
6-2, Freshman
Warrenville, IL

45



AT BYU: FRESHMAN - (2007-08): Has played in all nine games to date, starting in the last two ... is averaging of 18.9 minutes per game ... picked up a season and career high 19 points and seven rebounds vs. Hartford on 11/20/07 ... currently ranks fourth in scoring on the team with 5.3 points and places third in the rebound category, grabbing 4.6 boards per contest.

BEFORE BYU

Four-year letterwinner in basketball ... team MVP all four years ... second leading career scorer at high school ... second leading career rebounder at high school ... two-time MVP at Benet Tournament ... three-time All-Tournament Team in Shaumburg Tournament ... 2007 Walter Payton Player of the Year ... Captain All-Area Team in 2007 ... three-time All-Area ... four-time Anonymous All-Conference ... named Top 20 players in Illinois ... three-time All-State player ... ranked 51st nationally and ranked 11th in position nationally ... letterwinner in tennis ... was All-Conference Champs as part of no. 2 doubles team during sophomore season ... played two seasons for Illinois Full Package.

Statistics

Yr	G/GS	FG-FGA %	FT-FTA %	3-pts %	Pts.	Reb.	A.	BL.	St.	TO.
08	9/2	19-42 .452	10-17 .588	0-0 .000	48	41	10	2	2	25

Moeaki

Points:

Season Highs

19 vs. Hartford 11/20/07

Career Highs

same

Rebounds:

7 vs. Hartford 11/20/07, one more

same

3-PT FG's made:

Assists:

3 vs. Hartford 11/20/07

same

Steals:

3 vs. Hartford 11/20/07

same

◆ **Coriann Wood** ◆
 Forward
 6-1, Freshman
 Basin City, WA

23



AT BYU: FRESHMAN - (2007-08): Has played in seven of the nine games to date ... got her first collegiate start in the game at Sacred Heart on 12/01/07 ... is averaging of 10.1 minutes of playing time ... picked up season highs in points (8) and (5) rebounds at UConn on 11/29/07.

BEFORE BYU

Four-year letterwinner in basketball ... two-time First Team All-League ... Third Team All-State ... two-time league MVP ... First Team All-Area ... Honorable Mention ... team was league champs in 2003-04 and finished second in the district ... in 2004-05 team finished second in the league and eighth at the 2A State Tournament ... was voted best rebounder on the team and was the leading scorer in the league with an average of 17.3 ppg ... was team captain in 2006-07 ... voted best rebounder and scorer ... voted most athletic ... and was leading scorer in league with 21.0 ppg ... was district tournament MVP ... named MVP All-Area ... 1A state tournament MVP ... named Associated Press First Team ... all-time leading scorer at high school with (1,403 pts.) ... Tri-city Herald Female Athlete of the Year ... four-year letterwinner in track and field ... team was district champs in 2003-04 ... Third Team All-League ... in javelin was first in league and second in district ... in 2004-05 finished fifth in 2A state and second in district in the discus ... and first and fifth in 4x200 ... in 2005-06 broke school record in discus and team was league and district champs. ... four-year letterwinner in soccer ... team MVP and captain senior year ... three-time Second Team All-League ... team was league and district champs during two seasons ... was on the Superintendent's List Honor Roll all four years and also had a 4.0 GPA all four years.

Statistics

Yr	G/GS	FG-FGA %	FT-FTA %	3-pts %	Pts.	Reb.	A.	BL.	St.	TO.
08	7/1	9-22 .409	10-11 1.000	1-12 .083	29	19	2	0	3	9

Wood

Points:

Rebounds:

3-PT FG's made:

Assists:

Steals:

Season Highs

8 @ UConn 11/29/07

5 @ UConn 11/29/07

Career Highs

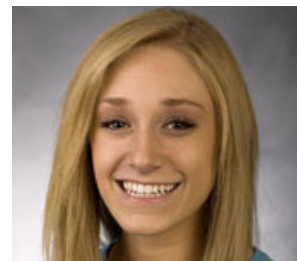
same

same

◆ **Stephanie Buhler** ◆

Forward
 6-0, Freshman
 Oregon City, OR

21



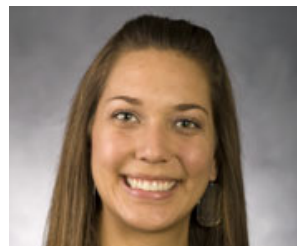
BEFORE BYU

Four-year letterwinner in basketball ... competed one year at Sandy HS where she garnered Honorable Mention honors. At Oregon City HS ...team was Three Rivers League Champions all three seasons ... named Second Team All- League her senior year ... ranks third all time in three-point shooting ... is also tops in the free throw category ... garnered Second Team All League honors during the 2006-07 season ... ranks second in state as a three-point shooter ... two-time Honorable Mention All State ... named Oregonian Athlete of the Week ... named to the All-Tournament Team at the Delaware and the Gillett, Wyoming Classics ... in state high school competition, the 2004-05 team finished third ... in 2005-06 team finished second and in 2006-07 team ended the year in sixth place ... Played on two club teams (Triple Threat Oregon two years) ... and on (Clutch Players for three years)

◆ **Megan Marks** ◆

Forward
 6-2, Freshman
 South Jordan, UT

55



AT BYU: FRESHMAN - (2007-08): Has played in four of the nine games to date ... is averaging 4.0 minutes of playing time.

BEFORE BYU

Four-year letterwinner in basketball ... team MVP ... Leadership Award ... Team Captain ... Female Athlete of the Year ... Region MVP ... All Region Team ... All-State ... 5A MVP ... team won 2007 State Champs ... Street & Smith Honorable Mention ... four-year letterwinner in volleyball ... All Region ... Team MVP ... four-year high school Honor Roll ... played two seasons for Utah Sky ... team captain.

Statistics

Yr	G/GS	FG-FGA %	FT-FTA %	3-pts %	Pts.	Reb.	A.	BL.	St.	TO.
08	4/0	0-1 .000	1-3 .333	0-0 .000	1	5	1	1	0	0

WALK-ON PLAYER BIOS

◆ **Amy Alleto** ◆

Guard

5-9, Sophomore

Parker, CO

31



AT BYU:

SOPHOMORE - (2007-08): Saw action in the home game vs. Hartford on 11/20/07.

BEFORE BYU

Four-year letterwinner in basketball ... Heart Award 2004 ... Best Defensive Player 2005 ... Team MVP 2005 and 2006 ... 2006 Most Inspirational Award ... team captain in 2006 ... Region Honorable Mention in 2004 and 2005 ... Second Team All-Conference in 2006 ... First Team Academic Award 2006 ... four-year letterwinner in cross country ... Second Team All-League in cross country ... four-year letterwinner in track and field ... placed fifth, eleventh and eighth place in shot put ... First-Team All-Region in shot put ... National Honor Society ... Social Studies Student Award.

◆ **Marie Beck** ◆

Guard

5-8, Freshman

Oxnard, CA

10



AT BYU:

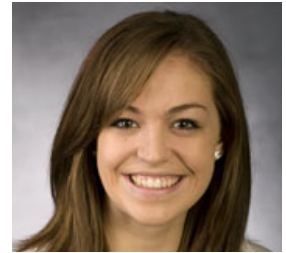
FRESHMAN - (2007-08): Has seen action in two games so far this season.

BEFORE BYU

School Valedictorian, Ventura County Star Athlete ... AP Scholar ... Top Honors Scholar ... Three-year letterwinner in basketball ... MVP in 2007 ... Athlete of the Year in 2007 ... Second Team All League in 2006 ... First Team All League 2007 ... Second Team All County 2007 ... four-year letterwinner in softball ... three time softball MVP 2005-2007.

◆ **Marianne Bell** ◆
Forward
6-1, Freshman
Ashburn, VA

34



BEFORE BYU

National Honor Society ... Athletic Honor Roll ... four-year letterwinner in basketball (three at Stone Bridge HS and one at Bruton HS) ... Co-MVP in 2006 ... MVP in 2007 ... holds school (Stone Bridge) record for most points scored in a season and career ... hold record for most rebounds in a season and career ... Second Team All District (2005 and 2006) ... First Team All-District in 2007 ... First Team All-Region in 2007 ... two-year letterwinner in volleyball ... First Team All- District and Region in 2007... Second Team All-District 2006 ... Honorable Mention All-State 2007 ... one-year letterwinner in tennis ... played one season for Potomac Valley Vogues ... team finished ninth at the AAU nationals in 2006.

Brigham Young University
Brigham Young University Combined Team Statistics (as of Dec 08, 2007)
All games

RECORD:	OVERALL	HOME	AWAY	NEUTRAL
ALL GAMES.....	(4-5)	(3-2)	(1-3)	(0-0)
CONFERENCE.....	(0-0)	(0-0)	(0-0)	(0-0)
NON-CONFERENCE.....	(4-5)	(3-2)	(1-3)	(0-0)

## Player	GP-GS	Min--Avg	---TOTAL---		---3-PTS---		---REBOUNDS---							PF	FO	A	TO	Blk	Stl	Pts	Avg
			FG-FGA	Pct	3FG-FGA	Pct	FT-FTA	Pct	Off	Def	Tot	Avg									
30 CARLING, Mallary...	9-9	315 35.0	43-123	.350	20-69	.290	16-20	.800	4	23	27	3.0	15	0	30	38	3	12	122	13.6	
52 VARLEY, Lauren....	9-9	251 27.9	40-73	.548	0-0	.000	4-15	.267	25	51	76	8.4	29	0	11	14	13	10	84	9.3	
32 SLADE, Shawnee....	9-9	262 29.1	26-85	.306	10-30	.333	6-13	.462	28	32	60	6.7	23	0	10	21	3	10	68	7.6	
45 MOEAKI, Keilani...	9-2	170 18.9	19-42	.452	0-0	.000	10-17	.588	17	24	41	4.6	20	0	10	25	2	2	48	5.3	
22 NIELSON, Mindy....	9-0	190 21.1	17-48	.354	4-16	.250	8-18	.444	6	15	21	2.3	11	0	10	24	6	12	46	5.1	
54 KING, Cassie.....	9-2	117 13.0	12-22	.545	0-1	.000	15-20	.750	5	20	25	2.8	16	0	5	9	4	1	39	4.3	
23 WOOD, Coriann.....	7-1	71 10.1	9-22	.409	1-12	.083	10-11	.909	4	15	19	2.7	9	0	2	9	0	3	29	4.1	
03 Foreman, Jazmine...	9-8	191 21.2	9-37	.243	4-17	.235	4-7	.571	0	9	9	1.0	20	1	23	19	0	5	26	2.9	
14 RED, Sarah.....	3-0	6 2.0	2-3	.667	1-1	1.000	2-2	1.000	0	0	0	0.0	1	0	0	1	0	0	7	2.3	
05 Cheesman, Ashley...	9-4	100 11.1	7-17	.412	0-0	.000	2-3	.667	5	13	18	2.0	8	0	6	8	0	2	16	1.8	
13 JUDKINS, Jaime....	8-1	86 10.8	3-9	.333	2-8	.250	2-2	1.000	1	4	5	0.6	8	0	8	8	0	2	10	1.3	
00 Nichols, Lauren....	5-0	21 4.2	0-2	.000	0-0	.000	3-6	.500	0	1	1	0.2	3	0	1	3	1	1	3	0.6	
31 ALLETO, Amy.....	2-0	1 0.5	0-1	.000	0-0	.000	1-2	.500	0	0	0	0.0	0	0	0	1	0	1	1	0.5	
55 MARKS, Megan.....	4-0	16 4.0	0-1	.000	0-0	.000	1-3	.333	2	3	5	1.3	5	0	1	0	1	0	1	0.3	
34 BELL, Marianne....	3-0	0 0.0	0-0	.000	0-0	.000	0-0	.000	0	0	0	0.0	0	0	0	0	0	0	0	0.0	
12 JACKSON, Brooke...	3-0	3 1.0	0-2	.000	0-1	.000	0-0	.000	0	0	0	0.0	0	0	0	0	0	0	0	0.0	
10 BECK, Marie.....	3-0	0 0.0	0-0	.000	0-0	.000	0-0	.000	0	1	1	0.3	0	0	0	0	0	0	0	0.0	
TEAM.....									17	32	49	5.4	0		4						

Total.....	9	1800	187-487	.384	42-155	.271	84-139	.604	114	243	357	39.7	168	1	117	184	33	61	500	55.6
Opponents.....	9	1800	181-508	.356	39-141	.277	110-193	.570	126	221	347	38.6	143	-	96	154	20	98	511	56.8

TEAM STATISTICS	BY	OPP	DATE	OPPONENT	W/L	SCORE	ATTEND
SCORING.....	500	511	11/09/08	at UC Santa Barbara	W	61-50	882
Points per game.....	55.6	56.8	11/13/07	at Arkansas State	L	53-54	1729
Scoring margin.....	-1.2	-	11-17-07	FRESNO STATE	W	78-59	546
FIELD GOALS-ATT.....	187-487	181-508	11-20-07	HARTFORD UNIVERSITY	L	59-70	646
Field goal pct.....	.384	.356	11-23-07	SETON HALL	W	47-43	703
3 POINT FG-ATT.....	42-155	39-141	11/29/07	at Connecticut	L	34-80	10752
3-point FG pct.....	.271	.277	12/01/07	at Sacred Heart	L	44-49	461
3-pt FG made per game..	4.7	4.3	12-05-07	NEW MEXICO STATE	L	52-54	512
FREE THROWS-ATT.....	84-139	110-193	12-8-07	UT VALLEY WOLVERINES	W	72-52	484
Free throw pct.....	.604	.570					
REBOUNDS.....	357	347					
Rebounds per game.....	39.7	38.6					
Rebounding margin.....	+1.1	-					
ASSISTS.....	117	96					
Assists per game.....	13.0	10.7					
TURNOVERS.....	184	154					
Turnovers per game....	20.4	17.1					
Turnover margin.....	-3.3	-					
Assist/turnover ratio..	0.6	0.6					
STEALS.....	61	98					
Steals per game.....	6.8	10.9					
BLOCKS.....	33	20					
Blocks per game.....	3.7	2.2					
WINNING STREAK.....	1	-					
Home win streak.....	1	-					
ATTENDANCE.....	2891	13824					
Home games-Avg/Game...	5-578	4-3456					
Neutral site-Avg/Game..	-	0-0					

SCORE BY PERIODS:	1st	2nd	Total
Brigham Young University.....	248	252	- 500
Opponents.....	232	279	- 511

Brigham Young University
 Brigham Young University Team Game-by-Game (as of Dec 08, 2007)
 All games

TEAM STATISTICS

Opponent	Date	Score	W/L	---TOTAL---		--3-PTRS--		FT-FTA		---REBOUNDS---				PF	A	TO	Blk	Stl	Pts---Avg	
				FG-FGA	Pct	3FG-FGA	Pct	Pct	Pct	Off	Def	Tot	Avg							
at UC Santa Barbara	11/09/08	61-50	W	23-46	.500	5-11	.455	10-14	.714	7	30	37	37.0	22	17	28	5	2	61	61.0
at Arkansas State	11/13/07	53-54	L	24-54	.444	3-16	.188	2-5	.400	15	24	39	38.0	21	11	24	1	4	53	57.0
FRESNO STATE	11-17-07	78-59	W	34-72	.472	5-23	.217	5-10	.500	14	41	55	43.7	17	18	19	4	6	78	64.0
HARTFORD UNIVERSITY	11-20-07	59-70	L	21-56	.375	4-17	.235	13-24	.542	13	23	36	41.8	24	11	16	2	7	59	62.8
SETON HALL	11-23-07	47-43	W	15-45	.333	4-12	.333	13-22	.591	8	29	37	40.8	13	12	19	2	7	47	59.6
at Connecticut	11/29/07	34-80	L	13-50	.260	3-16	.188	5-10	.500	9	21	30	39.0	22	5	21	1	6	34	55.3
at Sacred Heart	12/01/07	44-49	L	16-48	.333	8-20	.400	4-4	1.000	13	17	30	37.7	18	10	19	3	6	44	53.7
NEW MEXICO STATE	12-05-07	52-54	L	19-58	.328	2-18	.111	12-22	.545	15	28	43	38.4	16	13	15	3	6	52	53.5
UT VALLEY WOLVERINES	12-8-07	72-52	W	22-58	.379	8-22	.364	20-28	.714	20	30	50	39.7	15	20	23	12	17	72	55.6
Brigham Young University		500		187-487	.384	42-155	.271	84-139	.604	114	243	357	39.7	168	117	184	33	61	500	55.6
Opponents		511		181-508	.356	39-141	.277	110-193	.570	126	221	347	38.6	143	96	154	20	98	511	56.8

Games played: 9
 Points/game: 55.6
 FG Pct: 38.4
 3FG Pct: 27.1
 FT Pct: 60.4

Rebounds/game: 39.7
 Assists/game: 13.0
 Turnovers/game: 20.4
 Assist/turnover ratio: 0.6
 Steals/game: 6.8
 Blocks/game: 3.7

Brigham Young University
 Brigham Young University Game-by-Game Highs (as of Dec 08, 2007)
 All games

Opponent	Date	Score	WL	POINTS	REBOUNDS	ASSISTS	STEALS	BLOCKED SHOTS
at UC Santa Barbara	11/09/08	61-50	W	17-CARLING, Mall	11-VARLEY, Laure	5-Foreman, Jazm	1-Cheesman, Ash VARLEY, Laure	3-VARLEY, Laure
at Arkansas State	11/13/07	53-54	L	16-VARLEY, Laure	13-VARLEY, Laure	3-CARLING, Mall	1-NIELSON, Mind CHEESMAN, Ash CARLING, Mall VARLEY, Laure	1-SLADE, Shawne
FRESNO STATE	11-17-07	78-59	W	17-CARLING, Mall	13-VARLEY, Laure	5-CARLING, Mall	2-SLADE, Shawne	2-KING, Cassie
HARTFORD UNIVERSITY	11-20-07	59-70	L	19-MOEAKI, Keila	8-SLADE, Shawne	4-CARLING, Mall	3-NIELSON, Mind	2-VARLEY, Laure
SETON HALL	11-23-07	47-43	W	15-CARLING, Mall	8-VARLEY, Laure	2-SLADE, Shawne JUDKINS, Jaim CHEESMAN, Ash VARLEY, Laure	3-FOREMAN, Jazm	1-NIELSON, Mind MOEAKI, Keila
at Connecticut	11/29/07	34-80	L	10-SLADE, Shawne	6-VARLEY, Laure	1-SLADE, Shawne MOEAKI, Keila NICHOLS, Laur CARLING, Mall FOREMAN, Jazm	1-KING, Cassie SLADE, Shawne NIELSON, Mind NICHOLS, Laur WOOD, Coriann FOREMAN, Jazm	1-CARLING, Mall
at Sacred Heart	12/01/07	44-49	L	22-CARLING, Mall	8-VARLEY, Laure	2-JUDKINS, Jaim NIELSON, Mind FOREMAN, Jazm	2-CARLING, Mall	2-VARLEY, Laure
NEW MEXICO STATE	12-05-07	52-54	L	16-CARLING, Mall	11-SLADE, Shawne	6-CARLING, Mall	3-VARLEY, Laure	2-VARLEY, Laure
UT VALLEY WOLVERINES	12-8-07	72-52	W	15-SLADE, Shawne	8-VARLEY, Laure	8-FOREMAN, Jazm	5-NIELSON, Mind	5-NIELSON, Mind

Brigham Young University
Brigham Young University Game-by-Game Points-Rebounds-Assists (as of Dec 08, 2007)
All games

Opponent	Date	Score	00	03	05	10	12	13	14	22	23	
			WL NICHOLS, L	FOREMAN, J	CHEESMAN,	BECK, MARI	JACKSON, B	JUDKINS, J	RED, SARAH	NIELSON, M	WOOD, CORI	
at UC Santa Barbara	11/09/08	61-50	W	0- 1- 0	0- 2- 5	8- 2- 2	DNP	DNP	5- 3- 1	DNP	3- 0- 3	DNP
at Arkansas State	11/13/07	53-54	L	DNP	4- 3- 2	0- 1- 2	DNP	DNP	2- 0- 0	DNP	8- 2- 0	0- 0- 0
FRESNO STATE	11-17-07	78-59	W	1- 0- 0	8- 1- 2	0- 3- 0	0- 0- 0	DNP	0- 1- 0	2- 0- 0	11- 2- 2	5- 2- 1
HARTFORD UNIVERSITY	11-20-07	59-70	L	DNP	0- 1- 0	0- 0- 0	0- 0- 0	DNP	3- 0- 0	8- 2- 1	2- 3- 0	
SETON HALL	11-23-07	47-43	W	DNP	4- 0- 1	2- 2- 2	DNP	DNP	0- 0- 2	DNP	3- 2- 1	DNP
at Connecticut	11/29/07	34-80	L	2- 0- 1	4- 1- 1	2- 2- 0	DNP	0- 0- 0	0- 0- 0	DNP	2- 4- 0	8- 5- 0
at Sacred Heart	12/01/07	44-49	L	0- 0- 0	3- 0- 2	0- 2- 0	DNP	DNP	0- 0- 2	DNP	0- 1- 2	4- 2- 0
NEW MEXICO STATE	12-05-07	52-54	L	DNP	0- 1- 2	2- 2- 0	DNP	DNP	0- 0- 1	DNP	2- 2- 1	5- 4- 0
UT VALLEY WOLVERINES	12-8-07	72-52	W	0- 0- 0	3- 0- 8	2- 4- 0	0- 1- 0	0- 0- 0	3- 1- 2	2- 0- 0	9- 6- 0	5- 3- 1

Opponent	Date	Score	30	31	32	34	45	52	54	55	
			WL CARLING, M	ALLETO, AM	SLADE, SHA	BELL, MARI	MOEAKI, KE	VARLEY, LA	KING, CASS	MARKS, MEG	
at UC Santa Barbara	11/09/08	61-50	W	17- 4- 4	DNP	6- 3- 1	DNP	6- 3- 1	14-11- 0	2- 2- 0	DNP
at Arkansas State	11/13/07	53-54	L	13- 3- 3	DNP	2- 8- 0	DNP	4- 3- 0	16-13- 2	4- 2- 2	DNP
FRESNO STATE	11-17-07	78-59	W	17- 3- 5	0- 0- 0	16- 8- 2	0- 0- 0	2- 5- 1	8-13- 3	7- 5- 1	1- 4- 1
HARTFORD UNIVERSITY	11-20-07	59-70	L	5- 3- 4	DNP	9- 8- 2	0- 0- 0	19- 7- 3	8- 5- 1	5- 3- 0	DNP
SETON HALL	11-23-07	47-43	W	15- 2- 1	DNP	4- 7- 2	DNP	5- 7- 0	7- 8- 2	7- 4- 1	DNP
at Connecticut	11/29/07	34-80	L	4- 0- 1	DNP	10- 3- 1	DNP	0- 4- 1	2- 6- 0	0- 0- 0	0- 0- 0
at Sacred Heart	12/01/07	44-49	L	22- 4- 1	DNP	3- 5- 1	DNP	4- 3- 1	8- 8- 1	0- 1- 0	0- 0- 0
NEW MEXICO STATE	12-05-07	52-54	L	16- 5- 6	DNP	3-11- 0	DNP	6- 4- 2	12- 4- 0	6- 2- 1	DNP
UT VALLEY WOLVERINES	12-8-07	72-52	W	13- 3- 5	1- 0- 0	15- 7- 1	0- 0- 0	2- 5- 1	9- 8- 2	8- 6- 0	0- 1- 0