



Athletic Communications

30 Smith Fieldhouse • Provo, Utah • 84602
801-422-8948 • fax 801-422-0633

WOMEN'S BASKETBALL RELEASE

Game - #28 {BYU (13-14, 7-8) vs. TCU, (19-10, 12-3), Mar. 8, 2008, 5:30 p.m. MT}

BYU 2007-08 Schedule/Results

DATE	OPPONENT	TIME/RESULT
N 9	@ UC Santa Barbara	W 61-50
N 13	@ Arkansas State	L 53-54
N 17	vs. Fresno State	W 78-59
N 20	vs. Hartford	L 59-70
N. 23	vs. Seton Hall	W 47-43
N 29	@ U Conn	L 34-80
D 1	@ Sacred Heart	L 44-49
D 5	vs. New Mexico State	L 54-52
D 8	vs. Utah Valley U.	W 72-52
D 12	@ Weber State	L 54-65
D 15	vs. UCLA	W 68-58
D 29	@ Utah State	W 70-64
J 12	@ Colorado State *	W 60-39
J 16	vs. UNLV * (BYUTV)	W 67-55
J 19	vs. Utah * (Mtn.)	L 49-80
J 23	@ SDSU *	L 39-62
J 26	@ New Mexico *	W 41-38
J 30	vs. Air Force * (BYUTV)	W 52-47
F 2	vs. Wyoming *	W 56-42
F 5	@ TCU * (Mtn.)	L 54-73
F 13	vs. CSU * (BYUTV)	W 59-44
F 16	@ UNLV *	L 68-73ot
F 19	@ Utah * (CSTV)	L 45-82
F 23	vs. San Diego St. *	W 46-43
F 26	vs. UNM * (Mtn.)	L 45-55
M 1	@ Air Force *	L 49-54
M 5	@ Wyoming * (Mtn.)	L 34-68
M 8	vs. TCU * (CSTV)	5:30 p.m.
M 11-15	@ MWC Champs.	TBA
M 22-24	@ NCAA 1st/2nd Round	TBA
M 29-31	@ NCAA Regionals	TBA
A 6-8	@ Final Four	TBA

*MWC Games

All Times Local to Site

BYU Athletic Communications

Basketball Contact: Norma Collett
E-Mail: norma_collett@byu.edu
Office Phone: 801-422-4908
Office Fax: 801-422-0633
Mobile Phone: 801-372-0989
Press Row Phone: 801-422-3675
Web Site: byucougars.com

THIS WEEK IN WOMEN'S BASKETBALL

BYU's women's basketball team will play its final 2007-08 MWC regular season game on Saturday night, Mar. 8. The fifth place Cougar women (13-14, 7-8) host second place TCU (19-10, 12-3) in a 5:30 p.m. tip off from the Marriott Center.

BYU's three seniors Ashley Cheesman, Lauren Varley and Mallary Carling will be honored at the beginning of the game.

Game #28- 03/08/08: BYU vs. TCU Time: 5:30 p.m. MT Arena: Marriott Center

FOLLOWING THE COUGARS

TV: Saturday's game vs. TCU will air nationally on CSTV. Chris McGee and Sonya Neeler-Willhoite will be the talent.

Radio: The BYU vs. TCU contest will air tape delay on KQMB, 96.7 FM at the conclusion of the men's game from Ft. Worth, TX.

Internet: The BYU vs. TCU game will air tape delay on the internet at byuradio.org/streaming after the conclusion of the men's game from Ft. Worth, TX. Jay Monsen will call the action

Live stats: All of the games can be accessed with the live stats link by logging on to: www.byucougars.com/basketball_w/

Cougar All-Access: Those who have signed up for Cougar All-Access can also view the games on their computers.

BYU Probable Starters

No.	Name	Pos.	Ht.	Yr.	PPG	RPG
22	Mindy Nielson	G	5-10	Fr	7.2	2.9
30	Mallary G. Carling	G	5-10	Sr	13.5	3.6
32	Shawnee Slade	F	5-11	Jr	7.3	5.3
5	Ashley Cheesman	F	6-0	Sr	2.7	2.4
52	Lauren R. Varley	C	6-3	Sr	7.2	8.8

Reserve Players

No.	Name	Pos.	Ht.	Yr.	PPG	RPG
54	Cassie King	F	6-3	Jr	4.7	2.9
45	Keilani Moeaki	F	6-2	Fr	3.7	3.1
23	Coriann Wood	F	6-1	Fr	3.5	2.3
14	Sarah Red	G/F	5-11	Jr (rs)	2.4	0.4
3	Jazmine Foreman	G	5-5	Fr	1.8	0.9
13	Jaime Judkins	G	5-6	So	0.8	0.5
55	Megan Marks	F	6-2	Fr	0.7	1.2
0	Lauren Nichols	F	6-0	Fr (rs)	0.4	0.1



BYU Quick Facts

Basketball Information
 Head Coach Jeff Judkins (Utah, 1978)
 Office Phone 801-422-8035
 Best time to call 9-10:00 a.m. daily
 Record at BYU/Yrs. 139-76/6
 Career Record: same
 Assistant Coach Alli Bills
 Office Phone 801-422- 1548
 Assistant Coach Jonas Chatterton
 Office Phone 801-422 -8155
 Assistant Coach Stacy Jensen
 Office Phone 801-422-7682

Team Facts

2007-08 Record: 13-14, 7-8
 2006-07 Record 23-10,12-4
 2006-07 Post Season 0-1, NCAA
 Starters Returning/Lost 2/3
 Letterwinners Returning/Lost 6/3
 Newcomers 8

Roster Breakdown

STARTERS RETURNING: (2)

Mallary Gillespie: 5-10 S, G (13.6 ppg, 3.7 rpg)
 Lauren Riley: 6-3 Sr, C (7.4 ppg, 6.5 rpg)

STARTERS LOST: (3)

Dani Wright: 6-3 Sr, F (13.4 ppg, 6.8 rpg)
 Melinda Johnsen: 5-10 Sr, F/G (6.0 ppg, 2.8 rpg)
 Jennie Keele: 5-10 Sr, G (6.2 ppg, 3.7 rpg)

LETTERWINNERS RETURNING: (4)

Ashley Cheesman: 6-0 Sr, F (2.2 ppg, 1.7 rpg)
 Jaime Judkins: 5-6 So, G (0.2 ppg, 0.6 rpg)
 Cassie King: 6-3 Jr, C (3.5 ppg, 2.6 rpg)
 Shawnee Slade: 5-11 Jr, G/F (7.8 ppg, 4.5 rpg)

OTHERS RETURNING: (2)

Lauren Nichols: 6-0 Fr, G (RS last season)
 Sarah Red: 5-11 So, G/F (RS last season)

LETTERWINNERS LOST: (3)

Dani Wright: 6-3 Sr, F (13.4 ppg, 6.8 rpg)
 Melinda Johnsen: 5-10 Sr, F/G (6.0 ppg, 2.8 rpg)
 Jennie Keele: 5-10 Sr, G (6.2 ppg, 3.7 rpg)

NEWCOMERS: (6)

Stephanie Buhler: 6-0 Fr, F - Oregon City, OR/Oregon City HS
 Jazmine Foreman: 5-5 Fr, G - Vancouver, WA/Hudson's Bay HS
 Megan Marks: 6-2 Fr, F - South Jordan, UT/Bingham HS
 Keilani Moeaki: 6-2 Fr, F - Warrenville, IL/Wheaton Wille S HS
 Mindy Nielson: 5-10 Fr, G - Centennial, CO/Regis Jesuit HS
 Coriann Wood: 6-1 Fr, F - Othello, WA/Connell HS

Team Stats – 2007-08

- ◆ Shooting from the field: (.385, 548-1425)
- ◆ Shooting from the free-throw line: (.653, 226-346)
- ◆ Shooting from three-point line: (.296, 134-453)
- ◆ Average points per game: 53.9
- ◆ Average rebounds per game: 38.2

Player injury report: Senior co-captain Lauren Varley injured her ankle earlier in the week and her status is probable for Saturday night's contest.

BYU QUICK HITS

The team

☐ Two starters are among the six letterwinners returning for the 2007-08 season. The team also returns two redshirts in addition to six very talented newcomers

☐ The seniors are MWC Second Team honoree guard Mallary Gillespie-Carling and MWC Honorable Mention Lauren Riley-Varley. Both were also named to the 2007 MWC All-Tournament Team.

☐ Among the letterwinners are junior forward/guard combo Shawnee Slade, senior forward Ashley Cheesman and junior center Cassie King. The trio return with the most playing experience and an understanding of coach Judkins' game plan. Guard Jaime Judkins who also comes in with significant playing time experience.

☐ Two redshirts who were on the team last year, freshman forward Lauren Nichols and sophomore guard Sarah Red, a transfer from the University of Utah, will also provide solid experience on the team as newcomers.

☐ Six new incoming freshmen will take to the court in 2007-08. They are:
 Stephanie Buhler: 6-0, F, Oregon City, OR/Oregon City HS
 Jazmine Foreman: 5-5, G, Vancouver, WA/Hudson's Bay HS
 Megan Marks: 6-2, F, South Jordan, UT/Bingham HS
 Keilani Moeaki: 6-2, F, Warrenville, IL/Wheaton Warrenville South HS
 Mindy Nielson: 5-10, G, Centennial, CO/ Regis Jesuit HS
 Coriann Wood: 6-1, F, Basin City, WA/Connell HS

● 2007-08 HIGHLIGHTS AND NOTABLES ●

TEAM

- ⇒ Team captains for the year are seniors Mallary Carling and Lauren Varley
- ⇒ When playing on the road this season, BYU has a 4-10 record to date.
- ⇒ The 56-42 home victory over No.15 Wyoming marked the first time the Cougars have defeated a ranked opponent since the 55-52 upset against then No. 5 Stanford in Palo Alto Calif., in the 2007 Preseason WNIT on 11/13/06. BYU was ranked No. 24 at that time.
- ⇒ With the 67 points scored vs. UNLV on 01/16/08, BYU improved to 7-0 this season when scoring at least 60 points a game.

**USA Today ESPN Div. I Top 25 Coaches Poll-
3/4/08**

Rk. School

1. Connecticut (29-1)*
2. North Carolina (27-2)
3. Tennessee (27-2)
4. Maryland (29-2)
5. Rutgers (24-5)
6. LSU (25-4)
7. Stanford (27-3)
8. Baylor (24-4)
9. California (24-5)
10. Oklahoma (21-6)
11. Duke (21-8)
12. George Washington (24-5)
13. Old Dominion (25-4)
14. Utah (25-3)*
15. Notre Dame (23-7)
16. Texas A&M (22-7)
17. Kansas State (20-8)
18. West Virginia (23-6)
19. Oklahoma State (22-3)
20. Marist (28-2)
21. Georgia (21-8)
22. Vanderbilt (22-7)
23. Ohio State (22-7)
24. UTEP (25-2)
25. Virginia (22-8)

Denotes 07-08 Opponent. Receiving Votes: WY Hartford*
TCU*

2007-08 BYU's record when...

BYU leads at half	11-4
Opponent leads at half	1-9
Score is tied at the half	1-1
Game goes into overtime	0-1
BYU shoots 50 % or better	2-0
Opponent shoots 50 % or better	0-4
BYU makes five or more 3-pointers	8-5
Opponent makes 5 or more 3-pointers	6-9
BYU outrebounds opponent	10-3
Opponent outrebounds BYU	3-11
Rebounds are equal	0-1
BYU has 16 and under turnovers	4-5
Opponent has 16 and under	5-13
BYU has 17-20 turnovers	2-4
Opponent has 17-20 turnovers	2-4
BYU has more than 20 turnovers	7-5
Opponent has more than 20 turnovers	4-0
Cougars play at home	9-4
Cougars play on the road	4-10
Cougars play at neutral site	0-0

⇒ The 6,206 fans in attendance in the Marriott Center for the Utah game on 01/19/08 set a new school record.

⇒ The 55 rebounds by the Cougars vs Fresno St. on 11/17/07 are a season high and rank tied for third place in the program's history.

⇒ The win over Fresno St. improved BYU's all-time record in home openers to 24-11 and under coach Judkins is now 6-1.

⇒ The 78 points and the 55 rebounds recorded in the win over Fresno St. are the most in both categories to date.

⇒ For the first time this season four of BYU's five starters fouled out of the game at UNLV on 2/16/08.

⇒ The Cougars have gone into the locker room at the break tied just twice this year and have a 1-1 record (a 52-54 loss to New Mexico State on 12/05/07 and most recently a 46-43 win over MWC foe SDSU on 2/23/08).

⇒ The team grabbed 48 rebounds in the game at UNLV on 2/16/08 marking the second best outrebounding game to date during MWC action. They grabbed 49 rebounds at UNM on 1/26/08.

⇒ The nine three pointers made at UNLV on 2/16/08 were the most against and MWC opponent to date and tied a season high. BYU also had nine treys vs. UCLA on 12/15/07.

⇒ In turnovers, the team had season lows of just 13 in two games vs. MWC opponents (Wyoming on 2/2/08 and AF on 1/30/08).

⇒ The team grabbed a game high 49 boards in the win at UNM on 1/26/08, marking the third best rebound output of the season and the best over an MWC foe to date.

⇒ In the win over Utah Valley, the team scored 72 points which is second best of the year and the 20-point margin of victory is the most this season.

⇒ The 20 assists in the win over Utah Valley on 12/08/07 were the most to date.

⇒ In the Dec. 8th win over the Wolverines, the 17 steals were a new season best.

⇒ BYU scored 35 points in the first half vs. Utah Valley, the second most scored in a first half and the fourth most in any half to date.

⇒ The Cougars held CSU to 39 total points in the first league game of the year on 1/12/08, the lowest total points scored by an opponent to date. The Rams only scored 16 points in the first half of action, the lowest by an opponent to date. In the second meeting between the two teams on 2/13/08 CSU, scored 15 points in the first half.

⇒ **Scoring Summary:**

- Games with two players scoring in double figures- (9) UCSB, Ark. State, New Mexico State, UVU, at CSU on 1/12/08, vs. UNLV on 1/16/08, at UNM on 1/26/08, at TCU on 2/5/08, at AF on 3/1/08.
- Games with three players scoring in double figures- (5) Fresno State, Weber State, Utah State, vs. Wyoming on 2/2/08, and vs. CSU on 2/13/08.
- Games with four players scoring in double figures- (2) UCLA and at UNLV on 2/16/08.

⇒ Starting lineups: most recent*	Record
Foreman, Carling, Slade, Cheesman, Varley:	2-2
Foreman, Carling, Slade, King, Varley:	1-1
Judkins, Carling, Slade, Wood, Varley:	0-1
Foreman, Carling, Slade, Moeaki, Varley:	1-2
Nielson, Carling, Slade, Moeaki, Varley:	4-2
Nielson, Carling, Slade, Chessman, Varley:	5-4
Nielson, Carling, Slade, Red, Varley:	0-1
Nielson, Carling, Slade, Cheesman, King	0-1*

PLAYER

⇒ **Center Lauren Riley-Varley:** Recorded her fifth double double of the year and 10th career with 10 points and team high 13 rebounds at UNLV on 2/16/08. Added her fourth double double of the season and ninth career with 11 points and 11 rebounds vs. CSU on 2/13/08. In the home game vs. AF picked up new season and career highs in rebounds with 15. Versus UNLV on 1/16/08, she picked up her third double double of the season and eighth overall with the 14 points and 11 rebounds. She picked up back-to-back double doubles in the first two games of this season with 14 points and 11 rebounds against UCSB and 16 points and 13 boards at Arkansas State. The 16 points at Ark. St., were season highs to date. Varley scored 10 points in the game at Utah St., on 12/29/07 for her fourth double figure game this season and 23rd career double digit contest.

⇒ **Guard Mallary Gillespie-Carling:** Named MWC Player of the Week on Monday, Feb. 4, 2008. Has scored in double figures in 65 games during her career, 18 so far this year including the 14 points vs. UNM on 2/26/08. She ranks 13th in BYU's 1,000-point club with 1,371 as of 3/1/08. Carling has scored 20-plus points six times this season including five times vs. MWC foes. In the home game vs. Utah on 01/19/08 she tallied five treys for new season highs. At home vs. UNLV on 1/16/08, she scored 17 first-half points, the most she has scored in any half this season, and her 10 free throws were the most she has made in any game during her career. In the three-point field goals made category, ranks second with a career total of 240, and 58 to date.

⇒ **Guard Mindy Nielson:** Scored a new season and career high in points with 16 at UNLV on 2/16/08 marking her seventh double figure contest of the year. Dished out a season high nine assists in the game vs. CSU on 2/13/08. Tallied 15 points at Weber State on 12/12/07. Picked up season and career highs in blocks (5), steals, (5), rebounds (6) vs. Utah Valley St. on 12/08/07.

⇒ **Forward/Guard Shawnee Slade:** Picked up 10 points in the game at AF on 3/1/08 for her 19th career, eighth this season and fourth against an MWC foe. Grabbed new season and career highs in rebounds with 12 vs. Wyoming on 2/2/08, and has recorded eight or more rebounds in seven games this season. Tallied 11 points in the contest at UNLV on 2/16/08 for her 18th career, seventh season, and third league double digit game. Scored 14 points in the game vs. CSU on 2/13/08 marking her 17th career double digit contest, her sixth this year and the second in MWC action. She led the team in scoring with 15 points vs. Utah Valley on 12/08/07 marking her 13th career double digit game contest. Grabbed a season and career high 11 rebounds vs. New Mexico State on 12/05/07. The 11 boards were team and game highs as well.

⇒ **Forward Coriann Wood:** Picked up season and career highs in points with 13 in the league game at CSU on 01/12/08. In that same game, she tallied season and career highs in three-pointers with three. She grabbed season and career highs in rebounds in the game at UConn on 11/29/07 with five boards. Wood started her first collegiate game at Sacred Heart on 12/01/07.

⇒ **Guard Jazmine Foreman:** Dished out season and career highs in assists (8) vs. Utah Valley on 12/08/07.

⇒ **Guard Jaime Judkins:** Started in the game at Sacred Heart on 12/01/07. Dished out three assists in the game at Weber St. on 12/12/07 for new season and career highs.

⇒ **Guard/Forward Sarah Red:** Picked up seven points at SDSU on 1/23/08 for new season and career highs. Got her first start on the season in the game at Utah on 2/19/08. Grabbed a season and career high three boards vs. CSU on 2/13/08.

⇒ **Forward Ashley Cheesman:** Grabbed season and career high in rebounds with seven at WY on 3/05/08. Tallied new season and BYU career high in points with 10 vs. CSU on 2/13/08. Dished out season and BYU career highs in assists with three vs. SDSU on 2/23/08.

2007-08 MOUNTAIN WEST CONFERENCE NEWS



2007-08 MWC Women's Basketball Standings 03/06/08

Team (Rank)	Conf. Gms	All Gms
Utah (16/15)	15-0	26-3
TCU	12-3	19-10
Wyoming (24/25)	12-4	24-5
New Mexico	8-7	16-12
BYU	7-8	13-14
San Diego State	6-9	15-12
Air Force	4-11	10-17
UNLV	4-11	8-20
Colorado State	0-15	2-26

THIS WEEK IN THE MWC

March 4 (Tuesday)

UNM @ UNLV, 8 p.m. (CSTV)

March 5 (Wednesday)

AFA @ TCU, 6:30 p.m.

BYU @ 24/25 WY, 6 p.m. (The Mtn.)

16/15 Utah @ CSU, 7 p.m.

Mar. 8 (Saturday)

AFA @ SDSU, 2 p.m.

TCU @ BYU, 5:30 p.m. (CSTV)

CSU @ UNM, 2 p.m.

UNLV @ 16/15 Utah, 3 p.m.

PRESEASON MWC POLL

In October the Cougar team was picked to finish third in the MWC Preseason Poll. Senior Mallary Gillespie-Carling was picked to the five member Preseason All-Conference Team.

Rk.	Team (1st place votes)	Points
1.	Wyoming (24)	203
2.	TCU (2)	188
3.	BYU (1)	182
4.	New Mexico (3)	174
5.	Utah	158
6.	UNLV	109
7.	San Diego State	93
8.	Colorado State	53
9.	Air Force	37

Preseason All-Conference Team

Name	Class	Pos.	School
Adrienne Ross	Sr.	G	TCU
Dionne Marsh	Sr.	F	UNM
Hanna Zavec	Sr.	F	WY
Morgan Warburton	Jr.	G	Utah
Mallary Gillespie-Carling	Sr.	G	BYU

ABOUT SATURDAY'S LEAGUE OPPONENT

TCU - Provo, Utah at 5:30 p.m. (03/08/08)

The Horned Frogs come to the Marriott Center in second place in this week's league standings with a 12-3, 19-10 record. They defeated Air Force 85-50 on Wed. Mar. 5. TCU is led in scoring by senior guard Adrienne Ross who tallies 13.3 points and 3.6 boards a game. She's tied in first place in assists with teammate Moneka Knight. Each has a total of 86 to date. Guard/forward combo Lorie Butler-Rayford follows with 10.9 points and a team high 7.0 rebounds per contest. Head coach Jeff Mittie is in his 10th season with the TCU women's basketball program.

TCU Probable Starters

Pos.	No.	Name	Ht	Yr	PPG	RPG
F	14	Lorie Butler-Rayford	5-11	Sr	10.9	7.0
F	42	Mika Garoutte	6-2	Fr	3.4	2.2
G	04	Helena Sverrisdottir	6-1	Fr	9.3	5.7
G	10	Moneka Knight	5-7	Sr	5.9	2.1
G	33	Adrienne Ross	5-8	Sr	13.3	3.6

Stat Comparisons

	BYU	TCU
Field Goals:	.385	.414
Free Throws:	.653	.679
Three-Pointers:	.296	.319
Points Per Game:	53.9	70.2
Rebounds Per Game:	38.2	38.1

Series History

Record: 7-4 favoring BYU.

Last Meeting: The first meeting this year between the Cougars and Horned Frogs took place in Ft. Worth on 2/5/08 where TCU won on its homecourt, 73-54. In that game, freshman Mindy Nielson led the BYU effort with 14 points while senior Mallary Carling tallied 11. In rebounds, Varley, Carling and Slade grabbed five each. The Horned Frogs are 1-3 when playing at the Marriott Center picking up their last win on 11/29/03, a 79-74 victory.

MEDIA AVAILABILITY

Team Practice Times - at home

-The BYU team practices at the Marriott Center MWF from 11:30 a.m., to 1:30 p.m. On Tuesday's, practice is scheduled from 1 to 3 p.m., and on Thursday's from 11:30 to 2 p.m.

- Coach Judkins and players are available for interviews prior to or after practice. All interviews are scheduled in advance. Norma Collett is the Basketball Communications Director for the team and can be contacted by phone or email. Contact at: 801-422-4908, office, 801-372-0989, cell, and email norma_collett@byu.edu

LOOKING AHEAD

After the team's final MWC regular season game on Sat. Mar. 8, the Cougars will prepare to compete in the 2008 MWC Championships scheduled for Mar. 11-15 at the Thomas and Mack Center in Las Vegas. Pairings for the tournament will be announced on Sunday, Mar. 9.



Head Coach - Jeff Judkins
Overall Record: 139-76
2007-08: 13-14, 7-8

Two-time MWC Coach of the Year Jeff Judkins begins his seventh year as head coach of the women's basketball program, after garnering back-to-back MWC Coach of the Year honors. Prior to heading up the women's program, he served one year (1999-2000) as Director of Basketball Operations for the BYU men's team. In 2000 he became an assistant coach on the women's team.

Last year the BYU team compiled a 23-10, 12-4 record, made its eighth NCAA tournament appearance, and second consecutive. The team also won the MWC Regular Season title for the second straight time. Dani Wright was named MWC Co-Player of the Year. Her honor marks back-to-back years that a BYU player has received the honor. Ambrosia Anderson received the same award during the 2005-06 campaign.

Two seasons ago under Judkins leadership, the Cougars compiled their best finish in school history with a 26-6 record, clinched their first MWC regular season title since 1992 and received a no. 7 seed in the NCAA tournament, the highest seed for any BYU program. For the first time since the 2002-03 season, the team and its 13-1 record to start the year broke into the women's basketball collegiate polls, ranked No. 23 by the AP Poll and the USA Today/ESPN/WBCA Coaches Poll. They would rank as high as 18 and 16 in the two respective polls, finishing the year at No. 20. Last season Judkins picked up his 100th win, a 69-67 victory over CSU on Mar. 2, the same time the team clinched the league's regular season title.

Under Judkins tutelage, the women's basketball program has had consistent success with four postseason appearances including three NCAA Championships, guiding the team to its first ever Sweet Sixteen finish in 2002. In 2005, the 19-11 team played in the first round of the WNIT. Judkins has also coached two All-Americans in Erin Thom and Ambrosia Anderson. Both have gone on to play in the WNBA for the New York Liberty. Thom has been with the team for the past four years while Anderson just completed her first year playing professionally.

Coach Judkins has won at least 17 games every year but one since becoming the women's head coach. With his 23 wins last season, he has recorded three 20 win seasons and two MWC Regular Season titles.

The longtime University of Utah coach and player came to Provo with a proven record of success dating back to his high school days at Highland HS in Salt Lake City. An all-state selection in basketball, football and baseball, Judkins went on to play for the University of Utah from 1974-78.

While playing at Utah, Judkins helped lead the Utes to one conference championship and two berths in the NCAA tournament. He was a second-team academic All-American and three-time District VII academic selection. He also earned three first team All-WAC honors and was a member of the 1977 United States World Games team that captured the gold medal.

Judkins also played five years in the National Basketball Association for the Boston Celtics, Portland Trailblazers, Detroit Pistons and Utah Jazz. He was a second-round pick of the Celtics in 1978, the same year the Celtics selected Larry Bird with the sixth pick overall.

After his NBA career, he returned to Utah in 1989 and was an instrumental part of that program's success during his 10 years, recruiting such players as Keith Van Horn, Andre Miller, Mike Doleac, Hanno Mottola, Alex Jensen, Trent Whiting, Garner Meads, Jeff Johnsen and Britton Johnsen. Judkins, graduated from the University of Utah in 1978 with a degree in health and physical education. He and his wife Mary Kaye are the parents of five children: Jessica (27), (married to Paul), Jordan (25), Jenna (23), Jaime, who plays on the basketball team, (20), and Jaxson (17). Jenna plays on the volleyball team at BYU.

Hobbies: Waterskiing, horseback riding, hunting, golf, softball, and watching ESPN.

Judkins Coaching Record			
School	Yrs.	Rec.	Postseason
Utah*	1990-99	250-76	
BYU	2001-02	24-9	NCAA Sweet 16
BYU	2002-03	19-12	NCAA 1st Round
BYU	2003-04	15-14	DNC
BYU	2004-05	19-11	WNIT 1st Round
BYU	2005-06	26-6	NCAA 2nd Round
BYU	2006-07	23-10	NCAA 1st Round
* as an assistant to the men's team			

BYU Women's Basketball 2007-08 Numerical Roster

No.	Name	Pos.	Ht.	Cl.	Exp.	Hometown/Previous School
0	Lauren Nichols	F	6-0	Fr	HS	Irvine, CA/Hesperia HS
3	Jazmine Foreman	G	5-5	Fr	HS	Vancouver, WA/Hudson's Bay HS
5	Ashley Cheesman	F	6-0	Sr	3V	Orem, UT/Mountain View HS/SDSU
13	Jaime Judkins	G	5-6	So	1V	Salt Lake City, UT/Skyline HS
14	Sarah Red	G/F	5-11	Jr	1V	Provo, UT/Timpview HS/Utah
21	Stephanie Buhler	F	6-0	Fr	HS	Oregon City, OR/Oregon City HS
22	Mindy Neilson	G	5-10	Fr	HS	Centennial, CO/Regis Jesuit HS
23	Coriann Wood	F	6-1	Fr	HS	Basin City, WA/Connell HS
30	Mallary Gillespie-Carling	G	5-10	Sr	3V	Vineyard, UT/Mountain View HS
32	Shawnee Slade	G/F	5-11	Jr	2V	Taylorville, UT/Taylorville HS
33	Haley Hall	G	5-4	Fr	1V	Syracuse, UT/Clearfield HS
45	Keilani Moeaki	F	6-2	Fr	HS	Warrenville, IL/Wheaton Warrenville South HS
52	Lauren Riley-Varley	C	6-3	Sr	3V	San Clemente, CA/San Clemente HS
54	Cassie King	C	6-3	Jr	2V	Provo, UT/Provo HS
55	Megan Marks	F	6-2	Fr	HS	South Jordan, UT/Bingham HS

Walkons

31	Amy Alletto	G	5-9	So	HS	Parker, CO/Ponderosa HS
10	Marie Beck	G	5-8	Fr	HS	Oxnard, CA/Channel Islands HS
34	Marianne Bell	F	6-1	Fr	HS	Ashburn, VA/Stone Bridge/Bruton HS

Head Coach: Jeff Judkins

Assistant Coaches: Alli Bills, Jonas Chatterton, Stacy Jensen

Director of Basketball Operations: Dan Nielson

Athletic Trainer: Carolyn Billings

Team Manager: Erica Eyestone

RETURNING PLAYER BIOS

◆ **Mallory Gillespie-Carling** ◆
Guard
5-10, Senior
Vineyard, Utah

30



At BYU

SENIOR - (2007-08): Named MWC Player of the Week on 2/4/08 ... started in all games ... in 18 of the 27 games to date has scored in double figures recording her 65th career game with 14 points vs. UNM on 2/26/08 and is the ninth of the year in MWC action ... she has scored 20-plus points in six contests this year ... in the game vs Utah on 1/19/08 tallied a season-high five treys ... in the home game vs. UNLV on 1/16/08 she recorded a total of 10 free throws, the most she has made in her career and the 17 first half points were season bests ... in the game vs. UCLA on 12/15/07 grabbed nine boards which are new season highs ... currently, she's the team's scoring leader with an average of 13.5 points and is second on the team in assists with a total of 74 to date ... is in 14th place on BYU's 1,000-point club with a total of 1,371 points as of 3/05/08 ... she also ranks second all time in three-pointers with 240, 58 this year.

JUNIOR - (2006-2007): Final player notes: Started in all games ... named to the 2007 MWC Championships All-Tournament Team ... honored with Second Team All-MWC honors ... ranks first on the team in scoring with a 13.6 points average, and in total points with 449 ... is third in assists with 93 and ties for third in steals with 35 ... finished with the best free throw percentage on the team (.859) ... has the top percentage in three-point field goal made and attempted with 76 made for a 2.3 average and attempts with 222 for a 6.7 average ... when playing in MWC regular season contests, finished the year ranked fourth in scoring, seventh in assists, third in free throw percentage, eighth in three-point field goal percentage and first in three-point field goals made, and was third in the assist/turnover ratio category ... in all MWC games, ranked eighth in scoring, fourth in free throw percentage, 10th in assists, third in three-point field goals made ... grabbed a new season high in rebounds with nine in the semifinal game of the MWC Champs., vs. Utah on 3/09/07 ... picked up new season and career highs in points with 31 @ Wyoming on 2/15/07 and was named MWC Player of the Week on 2/19/07 for that performance marking her third Player of the Week award this season and career ... was honored with her second MWC Player of the Week honor on Feb. 5, 2007 for her scoring performance vs TCU (21 pts, 3 rebounds, 4 assists, 8-8 at the free throw line) ... tallied a new career high in three-pointers made in a game with eight vs. Weber State on 12/14/06 garnered first ever MWC Player of the Week honor on 12/18/06 for her stellar performance vs. Weber State which included a total of 30 points, half of those were from three point range ... scored in double figures in 23 of the 33 games played.

Gillespie-Carling Stats:

Yr	G/GS	FG-FGA %	FT-FTA %	3-pts %	Pts.	Reb.	A.	St.	To.
05	30/13	80-204.392	20-26.769	49-134 .366	229	87	44	27	46
06	32/32	117-289.405	36-49.735	58-160 .363	328	121	96	44	69
07	33/33	144-383.376	76-88.864	75-214 .350	439	119	92	34	73
08	27/27	128-344 .372	51-61 .836	58-179 .324	365	96	74	35	87

Gillespie-Carling

Season Highs:
Points: 26 vs. UNLV 01/16/08
Rebounds: 9 vs. UCLA 12/15/07
Assists: 6 vs. New Mex. State 12/8/07
3-PTFG's Made: 5 vs. Utah 01/19/08
Steals:
Blocks:

Career Highs:

31 @ Wyoming 02/15/07
 10 vs. UNLV on 1/11/06
 7 vs. UNM 02/02/06
 8 vs. Weber St. 12/14/06
 6 @ SDSU 02/22/06
 2 @ Harvard 12/02/06

◆ **Lauren Riley-Varley** ◆

Center

6-3, Senior

San Clemente, CA

52



At BYU

SENIOR - (2007-08): Has started in all games to date ... recorded her fifth double double of the season and 10th career with the 10 points and a team high 13 rebounds in the road game at UNLV on 2/16/08 ... tallied her fourth double double of the season and ninth career with the 11 points and 11 boards in the home win vs. CSU on 2/13/08 ... recorded a season and career high in rebounds with 15 vs. AF on 1/31/08 and picked up new season highs in blocks with five tying her career number of blocks ... grabbed a team and game high 12 boards in the game at UNM on 01/26/08 ... tallied her third season and eighth career double double with 14 points and 11 rebounds vs. UNLV on 01/16/08 ... picked up back-to-back double doubles in the first two games of this season tallying 14 points and 11 rebounds against UCSB and 16 points and 13 boards at Arkansas State ... she's the team's leading rebounder with an average of 8.8 per game ... has scored in double digits in seven games to date.

JUNIOR - (2006-2007): Final player notes: Played in all games, started the final 26 ... named to the 2007 MWC Championships All-Tournament Team ... garnered Honorable Mention All-MWC honors ... ranks second in field goal percentage with .548 and is third in field goals made with a total of 108 for a 3.3 average ... finished the year in fourth place in both points (243) and in scoring average 7.4 points per game ... places second in rebounds and in rebound average with a total of 216 for a 6.5 average per contest ... is in first place in defensive rebounds and second in offensive rebounds with 4.1 and 3.2 respectively ... tops on the team in blocked shots with a total of 31 on the year ... during the MWC regular season schedule, finished second in rebounding, first in field goal percentage, tied for third place in blocked shots, was fourth in offensive boards and seventh in the defensive rebound category ... when playing in all MWC games, was second in the field goal percentage category, ninth in two other categories, rebounding and blocked shots, and fifth and 12th in offensive and defensive rebounds categories ... notched her fifth double double of the season and career with 10 points and 14 rebounds vs. UNM in the MWC Champ., on 3/10/07, the 14 rebounds were a new season high ... tallied her fourth double double of the season and fourth overall with the 11 points and 10 rebounds vs. SDSU on 2/24/07 ... picked up her fourth double double of the season and fourth overall with 18 points and 11 rebounds vs. UNM on 2/10/07 ... the 18 points in the game were new season and career highs as well ... she had five blocks vs. AFA on 2/08/07 which are new season and career highs ... recorded her third double double of her career and first this year with 10 points and 10 rebounds vs. TCU on 2/01/07 ... in the game @ AF on 1/06/07 grabbed 11 rebounds, her second best of the year ... in the game vs. CSUN on 12/09/06 grabbed a season and career high four steals ... scored in double figures in 10 games including five MWC contests.

Riley-Varley Statistics

Yr	G/GS	FG-FGA %	FT-FTA %	3-pts %	Pts.	Reb.	A.	St.	Bl.	To
05	28/0	23-51.451	10-21 .476	0-0 .000	56	47	3	2	8	24
06	32/0	84-165.509	25-67.373	0-0 .000	193	174	15	25	18	64
07	33/26	108-197.548	27-68.397	0-0 .000	243	216	22	20	31	77
08	26/26	87-173 .503	13-35 .371	0-1 .000	187	229	32	18	36	66

Riley-Varley Season Highs

Points: 16 vs. Ark.St. 11/13/07
Rebounds: 15 vs. AF 01/30/08
Assists: 3 @ Utah St. 12/29/07, once more
Steals:
Blocks: 5 vs. AF 01/30/08

Career Highs:

18 vs. UNM 02/10/07
 same
 3 vs. Oklahoma 03/20/06
 4 vs. CSUN 12/09/06
 same, once more

◆ Ashley Cheesman ◆

Forward
6-0, Senior
Orem, Utah

5



At BYU

SENIOR - (2007-08): Started in the first four games of the year and most recently in the last 10 games including the ones on 3/5/08, 3/1/08, 2/26/08, 2/23/08, 2/16/08, 2/13/08, 2/5/08, 2/2/08, 1/30/08 and 1/26/08 ... grabbed new season and BYU career highs in rebounds with seven at Wyoming on 3/5/08 ... dished out new season and BYU career highs in assists with three vs. SDSU on 2/23/08 ... picked up new season and BYU career highs in points with 10 vs. CSU on 2/13/08 ... has played in all games ... she's averaging 2.7 points and 2.4 boards per contest.

JUNIOR - (2006-2007): Final player notes: Played in all games, and started in the second half of the game vs. AF in the MWC Tournament on 3/07/07 ... grabbed a new season high in rebounds with six vs. AF on 3/07/07 ... picked up a new season and career high in points with eight vs. UNLV on 1/20/07 ... as of 1/23/07 had the same number of points and rebounds on the year with (33) and finished the season with a total of 72 points, and 57 rebounds ... picked up five rebounds vs. ISU on 11/10/06 in her first contest as a Cougar ... played an average of 9.9 minutes per game with a season high of 22 in the AF game on 03/07/07.

Cheesman Statistics

Yr	G/GS	FG-FGA %	FT-FTA %	3-pts %	Pts.	Reb.	A.	BL.	St.	TO.
07	33/0	31-70.443	9-15.600	1-11 .091	72	57	14	3	11	29
08	27/14	30-72 .417	14-31 .452	0-2 .000	74	64	20	4	8	26

Cheesman

Season Highs
Points: 10 vs. CSU 02/13/08
Rebounds: 7 @ WY 3/5/08
Assists: 3 vs. SDSU 2/23/08
Steals: 2 vs. SDSU 2/23/08
Blocks:

Career Highs

same
same
same
2 vs. AF 03/07/07
3 vs. AF 03/07/07

◆ **Shawnee Slade** ◆
Guard/Forward
5-11, Junior
Taylorsville, Utah

32



At BYU

JUNIOR - (2207-08): Has started in all games to date ... scored 10 points at AF on 3/1/08 for her 19th career, eighth season and fourth in MWC action this year ... picked up her 18th career and seventh season double figure game with 11 points at UNLV on 2/16/08 ... in the home victory over CSU on 2/13/08 tallied her 17th career and sixth season double digit contest with a team and game high 14 points ranks second on the team in points and in rebounds with 7.3 points and 5.3 boards per contest ... grabbed 12 boards in the contest against No.15 Wyoming on 2/2/08 for new season and career highs ... in the road game at UNM on 01/26/08 scored 12 points marking her 16th career double digit game, her fifth of the year and her first in MWC play ... grabbed 11 rebounds vs. New Mexico St. on 12/05/07 ... tallied 10 points vs. UCLA on 12/15/07 for her 15th career double figure game and the fourth this season ... picked up a season high 16 points vs. Fresno State on 11/17/07.

SOPHOMORE - (2006-2007): Final player notes: Played in all games starting in the first seven ... ranks third in scoring and in rebounds with 7.8 points and 4.5 boards per game ... finished ranked third on the team in total rebounds with 150, third in both offensive and defensive rebounds with a total of 46 and 104 respectively ... ranked in fourth place in both assists with a total of 69 for a 2.1 average and in steals with a total of 35 for a 1.1 average ... is second on the team in field goal attempts (8.7) average and fourth in field goals made (3.1) average ... in the MWC Champs., game vs. UNM picked up her 10th game scoring in double digits with 14 ... in the game vs. TCU tallied her ninth double figure game ... she had three back to back double figure games with (13) at the AFA game on 01/06/07, (16) at UNM on 01/10/07, and (11) vs. Wyoming on 01/13/07 ... picked up a new season and career high four three-pointers in a game @ UNM on 1/10/07 ... in the league game vs. TCU on 02/01/07 picked up a new season high in assists with five ... had a season and career high four steals vs. AF on 01/06/07 ... notched her second season and career double double with 22 points and 10 rebounds vs. SCU on 11/22/06, the 22 points in that game were new season and career high ... also in that game went .916 (11-12) from the free throw line, a new season and career best ... picked up first career and season double double with 10 points and 10 rebounds vs. ISU on 11/10/06 ... in the same game had her first career start, and the 10 rebounds are a new career high ... named MWC Player of the Week on 11/10/06 for her achievements in the ISU game.

Statistics

Yr	G/GS	FG-FGA %	FT-FTA %	3-pts %	Pts.	Reb.	A.	St.	Bl.	To.
06	32/0	38-101.376	21-29.724	6-17 .353	103	70	19	16	1	22
07	32/7	99-278.356	29-53.547	22-76.289	249	147	67	35	9	63
08	27/27	81-236 .343	9-21 .429	25-85 .294	196	144	43	25	7	51

Slade

Points:

Rebounds:

Assists:

3-PT FG's Made:

Steals:

Blocks:

Season Highs

16 vs. Fresno St. 11/17/07

12 vs. Wyoming 2/2/08

4 @ Utah St. 12/29/07

Career Highs

22 vs. SCU 11/22/06

same

5 vs. TCU 02/01/07

4 @ UNM 01/10/07

4 @ AF 01/06/07

2 vs. SDSU 02/24/07

◆ **Cassie King** ◆

Center

6-3, Junior

Provo, UT

54



At BYU

JUNIOR - (2007-08): Has played in all 27 games to date, starting in three ... scored 10 points in the AF game on 3/1/08 for her fourth double digit scoring performance and the second in league action ... grabbed a new season high in boards with eight in the game at UNLV on 2/16/08 ... picked up 10 points vs. Wyoming on 2/2/08 marking her third double digit output of the year, and was perfect from the field 5-5 ... tied her season high in rebounds with six vs. UNLV on 01/16/08 ... picked up new season and career highs in points with 13 vs. UCLA on 12/15/07 ... had 10 points at Weber State on 12/12/07 ... averages 4.7 points and 2.9 rebounds and is playing 13.6 minutes per game.

SOPHOMORE - (2006-2007): Final players notes: Played in 32 of 33 games ... had doubled the number of points, assists and steals as of 01/29/07 from her freshman year ... finished the season with a total of 111 points, 12 assists and seven steals ... tied for fourth place in the blocked shots category with a total of 14 on the year ... averaged 11.6 points of playing time ... grabbed nine rebounds @ UVSC on 12/16/06 for a new season and career high in that category in that same game @ UVSC had two blocked shots ... picked up new season and career highs in points with 11 @ Harvard on 11/29/06.

Statistics

Yr	G/GS	FG-FGA %	FT-FTA %	3-pts %	Pts.	Reb.	A.	BL.	St.	TO.
06	23/0	7-22.318	9-12.750	0-1 .000	23	30	1	7	2	6
07	32/0	45-95.474	16-27.600	5-18.593	111	84	12	14	7	36
08	27/3	47-87 .540	31-42 .738	3-5 .600	128	78	14	15	9	30

King

Points:

Rebounds:

Steals:

Blocks:

Season Highs

13 vs. UCLA 12/15/07

8 @ UNLV 02/16/08

Career Highs

same

9 @ UVSC 12/16/06

2 @ Harvard 11/29/06

2 @ UVSC 12/16/06

◆ Jaime Judkins ◆
Guard
5-6, Sophomore
Salt Lake City, UT

13



At BYU

SOPHOMORE - (2007-08): Has played in 24 of the 27 games to date, starting in the game at Sacred Heart on 12/01/07 ... is averaging 0.8 points and 0.5 rebounds per game ... is playing an average of 7.5 minutes per game.

FRESHMAN - (2006-2007): Final player notes: Played in a total of 23 games averaging 3.1 minutes of playing time ... of those 23 contests, eight were against conference opponents and she also saw action in the NCAA first round game vs. Louisville on 03/17/07 ... picked up a season high in points with three in the first game of the year vs. ISU on 11/10/06 ... grabbed a season and career high rebounds with three @ Baylor on 11/16/06 ... dished out a season and career high three assists vs. AF on 02/08/07, and in that same game played a new season and career high 13 minutes.

Statistics

Yr	G/GS	FG-FGA %	FT-FTA %	3-pts %	Pts.	Reb.	A.	BL.	St.	To.
07	23/0	1-6 .167	2-5 .400	1-4 .250	5	13	7	0	2	11
08	24/1	5-26 .192	4-4 1.000	4-22 .182	18	12	17	0	5	16

Judkins

Points:

Rebounds:

3-PT FG's made:

Assists:

Steals:

Season Highs

5 @ UCSB 11/09/07

3 @ UCSB 11/09/07

3 @ Weber St 12/12/07

Career Highs

same

3 @ Baylor 11/16/06

3 vs. AF 02/08/07

1 vs. AF 02/08/07

◆ **Lauren Nichols** ◆
Forward
6-0, Freshman
Irvine, CA

0



At BYU

FRESHMAN - (2007-08): Has played in eight of 21 games to date ... is averaging 3.0 minutes of playing time.

FRESHMAN - (2006-2007): Redshirt

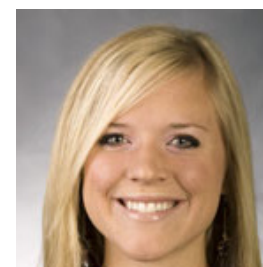
BEFORE BYU: Three-year basketball letterwinner ... Coach's Award senior year ... Mojave River League All-League ... Mojave River League Senior Award ... Outstanding Player Award at 13th Annual High Desert All-Star game ... team played in the semifinals of the CIF Southern Section Championships ... Principal's Honor Roll ... National Honor Roll ... Scholar Athlete ... 2006 attendant at the National Youth Leadership Forum on Defense, Intelligence, and Diplomacy ... 2005 Congressional Student Leadership Conference attendee ... two-year letterwinner in track and field and one year letterwinner in volleyball ... CIF Southern Section Volleyball Championships Quarterfinals in 2005 .. Division 2AA Track Championships in high jump, triple jump, long jump in 2005 and 2006 ... All-league in track and field in the high jump, triple jump, long jump and discuss ... Played for the West Coast Elite Basketball Club Team for two years ... 2004 AGS All-America Award ... 2004 AGS Super 60 ... 2002 AGS Elite 80 ... People to People Sports Ambassador ... Blue Chip All-Star ... Street and Smith All-America Honorable Mention ... USA Junior Nationals All-State High School competition attendee.

Statistics

Yr	G/GS	FG-FGA %	FT-FTA %	3-pts %	Pts.	Reb.	A.	BL.	St.	TO.
08	8/0	0-3 .000	3-6 .500	0-0 .000	3	1	1	1	1	3

◆ **Sarah Red** ◆
Guard/Forward
5-11, Junior
Provo, UT

14



At BYU

JUNIOR - (2007-08): Got her first start on 2/19/08 in the league game at Utah ... has played in 19 of the 27 games to date ... in the home game vs. CSU on 2/13/08 grabbed a season and career high three boards ... picked up season and career highs in points with seven at SDSU on 01/23/08 ... is averaging 6.0 minutes of playing time and 2.4 points per game.

2006-07: (Redshirt)

OTHER COLLEGE - At Utah: Freshman (2004-05): Played in eight games for an average of 3.6 minutes ... of those games four were on the road ... picked up a season high three points @AF on 01/20/05 ... finished the season with an 12.5 field goal percentage and 50.0 free throw percentage.

BEFORE BYU: Four-year letterwinner in basketball ... earned all-state honors for Timpview High School as a senior ... played for a four-time regional championship team ... helped lead team to state championship game ... named MVPlayer at the Nike Tourn. of Champions ... played for Utah Pride an A.A.U. team ... four-year letterwinner in volleyball ... garnered all-state honors.

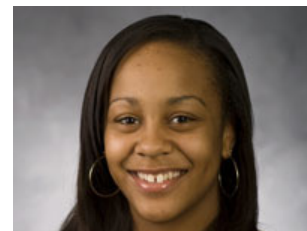
Statistics

Yr	G/GS	FG-FGA %	FT-FTA %	3-pts %	Pts.	Reb.	A.	BL.	St.	TO.
08	19/1	16-38 .421	5-6 .833	8-17 .471	45	8	3	0	7	7

INCOMING FRESHMEN PLAYER BIOS

◆ Jazmine Foreman ◆
Guard
5-5, Freshman
Vancouver, WA

3



AT BYU: FRESHMAN - (2007-08): Has started in nine of the 27 games played to date, and has played in all games ... is averaging 1.8 points and 0.9 rebounds and is fourth best in assists, dishing out 38 so far this season ... picked up a new season high in assists with eight vs. Utah Valley State on 12/08/07.

BEFORE BYU

Four-year letterwinner in basketball ... team MVP (2006-07) ... team captain ... First Team All-State ... graduated with honors ... honor roll ... played on Premier Elite Club Team for two years ... named to Oregon City All-Tournament Team.

Statistics

Yr	G/GS	FG-FGA %	FT-FTA %	3-pts %	Pts.	Reb.	A.	BL.	St.	TO.
08	27/9	16-72 .222	8-16 .500	8-35 .229	48	25	38	0	11	47

Foreman	Season Highs	Career Highs
Points:	8 vs. Fresno St. 11/17/07	same
Rebounds:	3 @ Ark. St. 11/13/07	same
3-PT FG's made:	2 @ UNM 01/26/08	same
Assists:	8 vs. Utah Valley 12/08/07	same
Steals:	3 vs. Seton Hall 11/23/07	same

◆ **Mindy Nielson** ◆
Guard
5-10, Freshman
Centennial, CO

22



AT BYU: FRESHMAN - (2007-08): started in the last 17 games beginning with the game vs. UCLA on 12/15/07 ... has played in all games averaging 27.6 minutes of playing time ... tallied a new season and career high in points with 16 at UNLV on 2/16/08 ... in the home game vs CSU on 02/13/08 dished out new season and career highs in assists with nine had back-to-back games where she scored in double figures picking up season and career highs in points with 15 in the game vs. UCLA on 12/15/07 and 15 points at Weber St., on 12/12/07 ... in the game vs. UCLA also picked up season highs in rebounds with seven and in assists with six ... picked up season and career highs in steals (5), and blocks (5) vs. Utah Valley on 12/08/07 ... has scored in double figures in seven games to date, including four in league action ... is currently third on the team in scoring with an average of 7.2 points per game ... is in first place on the team in assists with 78 to date.

BEFORE BYU

Four-year letterwinner in basketball ... First Team All-State ... high school Honor Roll ... played three seasons for Mile Hi Magic ... third place finish in Oregon City tournament ... First Team All-State.

Statistics

Yr	G/GS	FG-FGA %	FT-FTA %	3-pts %	Pts.	Reb.	A.	BL.	St.	TO.
08	27/17	68-184 .370	43-61 .705	16-53 .302	195	79	78	19	42	86

Nielson

Points:

Rebounds:

3-PT FG's made:

Assists:

Steals:

Blocks:

Season Highs

16 @ UNLV 02/16/08

7 vs. UCLA 12/15/07

9 vs. CSU 02/13/08

5 vs. Utah Valley 12/08/07

5 vs. Utah Valley 12/08/07

Career Highs

same

same

same

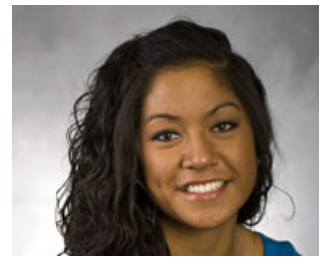
same

same

◆ **Keilani Moeaki** ◆

Forward
6-2, Freshman
Warrenville, IL

45



AT BYU: FRESHMAN - (2007-08): Has played in all 27 games to date, starting in nine ... is averaging of 16.8 minutes per game ... picked up a season and career high 19 points and seven rebounds vs. Hartford on 11/20/07 ... currently ranks sixth in scoring on the team with 3.7 points and is fourth in the rebound category, grabbing 3.1 boards per contest.

BEFORE BYU

Four-year letterwinner in basketball ... team MVP all four years ... second leading career scorer at high school ... second leading career rebounder at high school ... two-time MVP at Benet Tournament ... three-time All-Tournament Team in Shaumburg Tournament ... 2007 Walter Payton Player of the Year ... Captain All-Area Team in 2007 ... three-time All-Area ... four-time Anonymous All-Conference ... named Top 20 players in Illinois ... three-time All-State player ... ranked 51st nationally and ranked 11th in position nationally ... letterwinner in tennis ... was All-Conference Champs as part of no. 2 doubles team during sophomore season ... played two seasons for Illinois Full Package.

Statistics

Yr	G/GS	FG-FGA %	FT-FTA %	3-pts %	Pts.	Reb.	A.	BL.	St.	TO.
08	27/9	37-86 .430	25-38 .658	1-2 .500	100	83	25	7	8	67

Moeaki

Points:

Rebounds:

3-PT FG's made:

Assists:

Steals:

Season Highs

19 vs. Hartford 11/20/07

7 vs. Hartford 11/20/07, one more

3 vs. UCLA 12/15/07, once more

3 vs. Hartford 11/20/07

Career Highs

same

same

same

same

◆ **Coriann Wood** ◆
 Forward
 6-1, Freshman
 Basin City, WA

23



AT BYU: FRESHMAN - (2007-08): Has played in 25 of the 27 games and started in one to date, at Sacred Heart on 12/01/07 ... is averaging of 10.1 minutes of playing time, is scoring 3.5 points and 2.3 boards per game ... picked up a season high in points with 13 and in three-pointers made with three at CSU on 01/12/08 ... grabbed a season high in rebounds with five at UConn on 11/29/07.

BEFORE BYU

Four-year letterwinner in basketball ... two-time First Team All-League ... Third Team All-State ... two-time league MVP ... First Team All-Area ... Honorable Mention ... team was league champs in 2003-04 and finished second in the district ... in 2004-05 team finished second in the league and eighth at the 2A State Tournament ... was voted best rebounder on the team and was the leading scorer in the league with an average of 17.3 ppg ... was team captain in 2006-07 ... voted best rebounder and scorer ... voted most athletic ... and was leading scorer in league with 21.0 ppg ... was district tournament MVP ... named MVP All-Area ... 1A state tournament MVP ... named Associated Press First Team ... all-time leading scorer at high school with (1,403 pts.) ... Tri-city Herald Female Athlete of the Year ... four-year letterwinner in track and field ... team was district champs in 2003-04 ... Third Team All-League ... in javelin was first in league and second in district ... in 2004-05 finished fifth in 2A state and second in district in the discus ... and first and fifth in 4x200 ... in 2005-06 broke school record in discus and team was league and district champs. ... four-year letterwinner in soccer ... team MVP and captain senior year ... three-time Second Team All-League ... team was league and district champs during two seasons ... was on the Superintendent's List Honor Roll all four years and also had a 4.0 GPA all four years.

Statistics

Yr	G/GS	FG-FGA %	FT-FTA %	3-pts %	Pts.	Reb.	A.	BL.	St.	TO.
08	25/1	30-86 .349	18-20 .900	10-45 .222	88	57	6	5	5	29

Wood

Points:

Rebounds:

3-PT FG's made:

Assists:

Steals:

Season Highs

13 @ CSU 01/12/08

5 @ UConn 11/29/07

3 @ CSU on 01/12/08

Career Highs

same

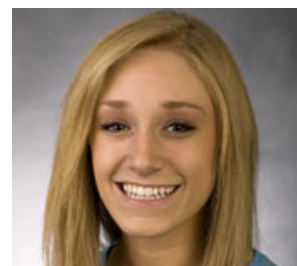
same

same

◆ **Stephanie Buhler** ◆

Forward
6-0, Freshman
Oregon City, OR

21



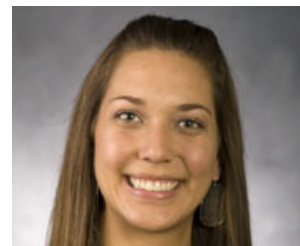
BEFORE BYU

Four-year letterwinner in basketball ... competed one year at Sandy HS where she garnered Honorable Mention honors. At Oregon City HS ...team was Three Rivers League Champions all three seasons ... named Second Team All- League her senior year ... ranks third all time in three-point shooting ... is also tops in the free throw category ... garnered Second Team All League honors during the 2006-07 season ... ranks second in state as a three-point shooter ... two-time Honorable Mention All State ... named Oregonian Athlete of the Week ... named to the All-Tournament Team at the Delaware and the Gillett, Wyoming Classics ... in state high school competition, the 2004-05 team finished third ... in 2005-06 team finished second and in 2006-07 team ended the year in sixth place ... Played on two club teams (Triple Threat Oregon two years) ... and on (Clutch Players for three years).

◆ **Megan Marks** ◆

Forward
6-2, Freshman
South Jordan, UT

55



AT BYU: FRESHMAN - (2007-08): Has played in 12 of the 27 games to date ... is averaging 4.5 minutes of playing time ... picked up season and career high in points with three in the game at Wyoming on 3/5/08 ... has grabbed four rebounds in two games to date, at Wyoming on 3/5/08 and vs. Fresno State on 11/17/08.

BEFORE BYU

Four-year letterwinner in basketball ... team MVP ... Leadership Award ... Team Captain ... Female Athlete of the Year ... Region MVP ... All Region Team ... All-State ... 5A MVP ... team won 2007 State Champs ... Street & Smith Honorable Mention ... four-year letterwinner in volleyball ... All Region ... Team MVP ... four-year high school Honor Roll ... played two seasons for Utah Sky ... team captain.

Statistics

Yr	G/GS	FG-FGA %	FT-FTA %	3-pts %	Pts.	Reb.	A.	BL.	St.	TO.
08	12/0	3-13 .231	1-3 .333	1-6 .167	8	14	1	4	0	2

WALK-ON PLAYER BIOS

◆ **Amy Alletto** ◆

Guard

5-9, Sophomore

Parker, CO

31



AT BYU:

SOPHOMORE - (2007-08): has played in five games to date, most recently in the road game at Wyoming on 3/5/08 ... also played at Utah on 2/19/08 ... played in the home league game vs. Utah on 01/19/08, at CSU on 01/12/08, and in the home game vs. Hartford on 11/20/07.

BEFORE BYU

Four-year letterwinner in basketball ... Heart Award 2004 ... Best Defensive Player 2005 ... Team MVP 2005 and 2006 ... 2006 Most Inspirational Award ... team captain in 2006 ... Region Honorable Mention in 2004 and 2005 ... Second Team All-Conference in 2006 ... First Team Academic Award 2006 ... four-year letterwinner in cross country ... Second Team All-League in cross country ... four-year letterwinner in track and field ... placed fifth, eleventh and eighth place in shot put ... First-Team All-Region in shot put ... National Honor Society ... Social Studies Student Award.

◆ **Marie Beck** ◆

Guard

5-8, Freshman

Oxnard, CA

10



AT BYU:

FRESHMAN - (2007-08): Has seen action in three games so far this season.

BEFORE BYU

School Valedictorian, Ventura County Star Athlete ... AP Scholar ... Top Honors Scholar ... Three-year letterwinner in basketball ... MVP in 2007 ... Athlete of the Year in 2007 ... Second Team All League in 2006 ... First Team All League 2007 ... Second Team All County 2007 ... four-year letterwinner in softball ... three time softball MVP 2005-2007.

◆ Marianne Bell ◆

Forward

6-1, Freshman

Ashburn, VA

34



BEFORE BYU

National Honor Society ... Athletic Honor Roll ... four-year letterwinner in basketball (three at Stone Bridge HS and one at Bruton HS) ... Co-MVP in 2006 ... MVP in 2007 ... holds school (Stone Bridge) record for most points scored in a season and career ... hold record for most rebounds in a season and career ... Second Team All District (2005 and 2006) ... First Team All-District in 2007 ... First Team All-Region in 2007 ... two-year letterwinner in volleyball ... First Team All- District and Region in 2007... Second Team All-District 2006 ... Honorable Mention All-State 2007 ... one-year letterwinner in tennis ... played one season for Potomac Valley Vogues ... team finished ninth at the AAU nationals in 2006.

Brigham Young University
Brigham Young University Combined Team Statistics (as of Mar 05, 2008)
All games

RECORD :	OVERALL	HOME	AWAY	NEUTRAL
ALL GAMES	(13-14)	(9-4)	(4-10)	(0-0)
CONFERENCE	(7-8)	(5-2)	(2-6)	(0-0)
NON-CONFERENCE	(6-6)	(4-2)	(2-4)	(0-0)

## Player	GP-GS	Min--Avg	---TOTAL---		---3-PTS---		FT-FTA	Pct	----REBOUNDS----				PF	FO	A	TO	Blk	Stl	Pts	Avg
			FG-FGA	Pct	3FG-FGA	Pct			Off	Def	Tot	Avg								
30 CARLING, Mallary...	27-27	944 35.0	128-344	.372	58-179	.324	51-61	.836	13	83	96	3.6	51	2	74	87	10	35	365	13.5
32 SLADE, Shawnee....	27-27	827 30.6	81-236	.343	25-85	.294	9-21	.429	45	99	144	5.3	59	1	43	51	7	25	196	7.3
22 NIELSON, Mindy....	27-17	745 27.6	68-184	.370	16-53	.302	43-61	.705	11	68	79	2.9	47	1	78	86	19	42	195	7.2
52 VARLEY, Lauren....	26-26	680 26.2	87-173	.503	0-1	.000	13-35	.371	79	150	229	8.8	70	0	32	66	36	18	187	7.2
54 KING, Cassie.....	27-3	367 13.6	47-87	.540	3-5	.600	31-42	.738	29	49	78	2.9	46	0	14	30	15	9	128	4.7
45 MOEAKI, Keilani...	27-9	454 16.8	37-86	.430	1-2	.500	25-38	.658	33	50	83	3.1	46	0	25	67	7	8	100	3.7
23 WOOD, Coriann....	25-1	253 10.1	30-86	.349	10-45	.222	18-20	.900	11	46	57	2.3	37	0	6	29	5	5	88	3.5
05 Cheesman, Ashley..	27-14	376 13.9	30-72	.417	0-2	.000	14-31	.452	19	45	64	2.4	36	0	20	26	4	8	74	2.7
14 RED, Sarah.....	19-1	114 6.0	16-38	.421	8-17	.471	5-6	.833	1	7	8	0.4	8	0	3	7	0	7	45	2.4
03 Foreman, Jazmine..	27-9	397 14.7	16-72	.222	8-35	.229	8-16	.500	3	22	25	0.9	49	2	38	47	0	11	48	1.8
13 JUDDKINS, Jaime...	24-1	180 7.5	5-26	.192	4-22	.182	4-22	1.000	5	7	12	0.5	19	0	17	16	0	5	18	0.8
55 MARKS, Megan.....	12-0	54 4.5	3-13	.231	1-6	.167	1-3	.333	2	12	14	1.2	14	1	1	2	4	0	8	0.7
00 Nichols, Lauren....	8-0	24 3.0	0-3	.000	0-0	.000	3-6	.500	0	1	1	0.1	3	0	1	3	1	1	3	0.4
31 ALLETO, Amy.....	3-0	2 0.7	0-1	.000	0-0	.000	1-2	.500	0	0	0	0.0	0	0	1	0	1	1	0.3	
10 BECK, Marie.....	3-0	0 0.0	0-0	.000	0-0	.000	0-0	.000	0	1	1	0.3	0	0	0	0	0	0	0	0.0
12 JACKSON, Brooke...	3-0	3 1.0	0-2	.000	0-1	.000	0-0	.000	0	0	0	0.0	0	0	0	0	0	0	0	0.0
11 JACKSON, AMY.....	1-0	0 0.0	0-1	.000	0-0	.000	0-0	.000	0	0	0	0.0	0	0	0	0	0	0	0	0.0
34 BELL, Marianne....	7-0	5 0.7	0-1	.000	0-0	.000	0-0	.000	1	0	1	0.1	2	0	0	0	0	0	0	0.0
TEAM.....									46	94	140	5.2	0		11					
Total.....	27	5425	548-1425	.385	134-453	.296	226-346	.653	298	734	1032	38.2	487	7	352	529	108	175	1456	53.9
Opponents.....	27	5425	539-1550	.348	129-432	.299	346-512	.676	375	654	1029	38.1	376	-	300	406	60	250	1553	57.5

TEAM STATISTICS	BY	OPP	DATE	OPPONENT	W/L	SCORE	ATTEND
SCORING.....	1456	1553	11/09/08	at UC Santa Barbara	W	61-50	882
Points per game.....	53.9	57.5	11/13/07	at Arkansas State	L	53-54	1729
Scoring margin.....	-3.6	-	11-17-07	FRESNO STATE	W	78-59	546
FIELD GOALS-ATT.....	548-1425	539-1550	11-20-07	HARTFORD UNIVERSITY	L	59-70	646
Field goal pct.....	.385	.348	11-23-07	SETON HALL	W	47-43	703
3 POINT FG-ATT.....	134-453	129-432	11/29/07	at Connecticut	L	34-80	10752
3-point FG pct.....	.296	.299	12/01/07	at Sacred Heart	L	44-49	461
3-pt FG made per game..	5.0	4.8	12-05-07	NEW MEXICO STATE	L	52-54	512
FREE THROWS-ATT.....	226-346	346-512	12-8-07	UT VALLEY WOLVERINES	W	72-52	484
Free throw pct.....	.653	.676	12/12/07	at Weber State	L	54-65	1921
REBOUNDS.....	1032	1029	12-15-07	UCLA	W	68-58	655
Rebounds per game.....	38.2	38.1	12/29/07	at Utah State	W	70-64	860
Rebounding margin.....	+0.1	-	*01/12/08	at Colorado State	W	60-39	1174
ASSISTS.....	352	300	*01-16-08	UNLV	W	67-55	559
Assists per game.....	13.0	11.1	*01-19-08	UNIVERSITY OF UTAH	L	49-80	6206
TURNOVERS.....	529	406	*1-23-08	at SAN DIEGO STATE	L	39-62	747
Turnovers per game.....	19.6	15.0	*1/26/08	at University of New Mex	W	41-38	8975
Turnover margin.....	-4.6	-	*01-30-08	AIR FORCE ACADEMY	W	52-47	516
Assist/turnover ratio..	0.7	0.7	*02-02-08	UNIVERSITY OF WYOMIN	W	56-42	929
STEALS.....	175	250	*2/5/08	at TCU	L	54-73	2101
Steals per game.....	6.5	9.3	*02-13-08	COLORADO STATE	W	59-44	605
BLOCKS.....	108	60	*02/16/08	at UNLV	LOT	68-73	1386
Blocks per game.....	4.0	2.2	*02/19/08	at University of Utah	L	45-82	1573
WINNING STREAK.....	0	-	*02-23-08	SAN DIEGO STATE	W	46-43	766
Home win streak.....	0	-	*2/26/08	UNIVERSITY OF NEW MEX	L	45-55	645
ATTENDANCE.....	13772	37992	*3/1/08	at Air Force Academy	L	49-54	424
Home games-Avg/Game....	13-1059	14-2714	*3-5-08	at University of Wyomin	L	34-68	5007
Neutral site-Avg/Game..	-	0-0					

SCORE BY PERIODS:	1st	2nd	OT	Total
Brigham Young University.....	681	766	9	1456
Opponents.....	712	827	14	1553

Brigham Young University
Brigham Young University Combined Team Statistics (as of Mar 05, 2008)
Conference games

RECORD:	OVERALL	HOME	AWAY	NEUTRAL
ALL GAMES.....	(7-8)	(5-2)	(2-6)	(0-0)
CONFERENCE.....	(7-8)	(5-2)	(2-6)	(0-0)
NON-CONFERENCE.....	(0-0)	(0-0)	(0-0)	(0-0)

## Player	GP-GS	Min--Avg	---TOTAL---		---3-PTS---		---FT-FTA		---REBOUNDS---				PF	FO	A	TO	Blk	Stl	Pts	Avg
			FG-FGA	Pct	3FG-FGA	Pct	Pct	Off	Def	Tot	Avg									
30 CARLING, Mallery...	15-15	519 34.6	71-187	.380	30-91	.330	27-32	.844	9	38	47	3.1	31	1	34	38	6	22	199	13.3
22 NIELSON, Mindy.....	15-15	460 30.7	38-111	.342	8-29	.276	29-35	.829	4	39	43	2.9	29	1	59	53	9	26	113	7.5
32 SLADE, Shawnee.....	15-15	463 30.9	46-129	.357	10-45	.222	2-5	.400	12	59	71	4.7	27	1	23	21	4	12	104	6.9
52 VARLEY, Lauren.....	14-14	352 25.1	39-79	.494	0-1	.000	6-13	.462	48	82	130	9.3	34	0	17	46	20	6	84	6.0
54 KING, Cassie.....	15-1	194 12.9	24-47	.511	1-2	.500	10-13	.769	17	24	41	2.7	21	0	5	14	7	6	59	3.9
05 CHEESMAN, Ashley...	15-10	263 17.5	23-54	.426	0-2	.000	12-28	.429	13	32	45	3.0	24	0	14	17	4	6	58	3.9
23 WOOD, Coriann.....	15-0	163 10.9	19-60	.317	9-33	.273	5-5	1.000	6	28	34	2.3	25	0	3	19	5	1	52	3.5
14 RED, Sarah.....	15-1	108 7.2	14-35	.400	7-16	.438	3-4	.750	1	7	8	0.5	7	0	3	6	0	7	38	2.5
45 MOEAKI, Keilani....	15-4	212 14.1	7-27	.259	1-2	.500	8-12	.667	15	21	36	2.4	19	0	10	29	2	6	23	1.5
03 FOREMAN, Jazmine...	15-0	161 10.7	6-29	.207	3-16	.188	4-9	.444	3	11	14	0.9	25	1	12	25	0	5	19	1.3
55 MARKS, Megan.....	8-0	38 4.8	3-12	.250	1-6	.167	0-0	.000	0	9	9	1.1	9	1	0	2	3	0	7	0.9
13 JUDKINS, Jaime.....	13-0	85 6.5	2-13	.154	2-11	.182	2-2	1.000	2	1	3	0.2	11	0	4	6	0	2	8	0.6
31 ALLETO, Amy.....	1-0	1 1.0	0-0	.000	0-0	.000	0-0	.000	0	0	0	0.0	0	0	0	0	0	0	0	0.0
00 NICHOLS, Lauren....	1-0	1 1.0	0-0	.000	0-0	.000	0-0	.000	0	0	0	0.0	0	0	0	0	0	0	0	0.0
11 JACKSON, AMY.....	1-0	0 0.0	0-1	.000	0-0	.000	0-0	.000	0	0	0	0.0	0	0	0	0	0	0	0	0.0
34 BELL, Marianne.....	4-0	5 1.3	0-1	.000	0-0	.000	0-0	.000	1	0	1	0.3	2	0	0	0	0	0	0	0.0
TEAM.....										21	56	77	5.1	0		6				

Total.....	15	3025	292-785	.372	72-254	.283	108-158	.684	152	407	559	37.3	264	5	184	282	60	99	764	50.9
Opponents.....	15	3025	291-855	.340	72-242	.298	201-275	.731	212	370	582	38.8	186	-	171	215	35	127	855	57.0

TEAM STATISTICS	BY	OPP	DATE	OPPONENT	W/L	SCORE	ATTEND
SCORING.....	764	855	*01/12/08	at Colorado State	W	60-39	1174
Points per game.....	50.9	57.0	*01-16-08	UNLV	W	67-55	559
Scoring margin.....	-6.1	-	*01-19-08	UNIVERSITY OF UTAH	L	49-80	6206
FIELD GOALS-ATT.....	292-785	291-855	*1-23-08	at SAN DIEGO STATE	L	39-62	747
Field goal pct.....	.372	.340	*1/26/08	at Univesity of New Mex	W	41-38	8975
3 POINT FG-ATT.....	72-254	72-242	*01-30-08	AIR FORCE ACADEMY	W	52-47	516
3-point FG pct.....	.283	.298	*02-02-08	UNIVERSITY OF WYOMIN	W	56-42	929
3-pt FG made per game..	4.8	4.8	*2/5/08	at TCU	L	54-73	2101
FREE THROWS-ATT.....	108-158	201-275	*02-13-08	COLORADO STATE	W	59-44	605
Free throw pct.....	.684	.731	*02/16/08	at UNLV	LOT	68-73	1386
REBOUNDS.....	559	582	*02/19/08	at University of Utah	L	45-82	1573
Rebounds per game.....	37.3	38.8	*02-23-08	SAN DIEGO STATE	W	46-43	766
Rebounding margin.....	-1.5	-	*2/26/08	UNIVESITY OF NEW MEX	L	45-55	645
ASSISTS.....	184	171	*3/1/08	at Air Force Academy	L	49-54	424
Assists per game.....	12.3	11.4	*3-5-08	at University of Wyomin	L	34-68	5007
TURNOVERS.....	282	215					
Turnovers per game.....	18.8	14.3					
Turnover margin.....	-4.5	-					
Assist/turnover ratio..	0.7	0.8					
STEALS.....	99	127					
Steals per game.....	6.6	8.5					
BLOCKS.....	60	35					
Blocks per game.....	4.0	2.3					
WINNING STREAK.....	0	-					
Home win streak.....	0	-					
ATTENDANCE.....	10226	21387					
Home games-Avg/Game....	7-1461	8-2673					
Neutral site-Avg/Game..	-	0-0					

SCORE BY PERIODS:	1st	2nd	OT	Total
Brigham Young University.....	347	408	9	764
Opponents.....	397	444	14	855

Brigham Young University
Brigham Young University Overall/Conference Statistics (as of Mar 06, 2008)
All games

SUMMARY	OVERALL STATISTICS										CONFERENCE STATISTICS									
	GP-GS	Min/G	FG%	3PT%	FT%	R/G	A/G	STL	BLK	PTS/G	GP-GS	Min/G	FG%	3PT%	FT%	R/G	A/G	STL	BLK	PTS/G
CARLING, Mallary....	27-27	35.0	.372	.324	.836	3.6	2.7	35	10	13.5	15-15	34.6	.380	.330	.844	3.1	2.3	22	6	13.3
SLADE, Shawnee.....	27-27	30.6	.343	.294	.429	5.3	1.6	25	7	7.3	15-15	30.9	.357	.222	.400	4.7	1.5	12	4	6.9
NIELSON, Mindy.....	27-17	27.6	.370	.302	.705	2.9	2.9	42	19	7.2	15-15	30.7	.342	.276	.829	2.9	3.9	26	9	7.5
VARLEY, Lauren.....	26-26	26.2	.503	.000	.371	8.8	1.2	18	36	7.2	14-14	25.1	.494	.000	.462	9.3	1.2	6	20	6.0
KING, Cassie.....	27-3	13.6	.540	.600	.738	2.9	0.5	9	15	4.7	15-1	12.9	.511	.500	.769	2.7	0.3	6	7	3.9
MOEAKI, Keilani.....	27-9	16.8	.430	.500	.658	3.1	0.9	8	7	3.7	15-4	14.1	.259	.500	.667	2.4	0.7	6	2	1.5
WOOD, Coriann.....	25-1	10.1	.349	.222	.900	2.3	0.2	5	5	3.5	15-0	10.9	.317	.273	1.000	2.3	0.2	1	5	3.5
Cheesman, Ashley....	27-14	13.9	.417	.000	.452	2.4	0.7	8	4	2.7	15-10	17.5	.426	.000	.429	3.0	0.9	6	4	3.9
RED, Sarah.....	19-1	6.0	.421	.471	.833	0.4	0.2	7	0	2.4	15-1	7.2	.400	.438	.750	0.5	0.2	7	0	2.5
Foreman, Jazmine....	27-9	14.7	.222	.229	.500	0.9	1.4	11	0	1.8	15-0	10.7	.207	.188	.444	0.9	0.8	5	0	1.3
JUDKINS, Jaime.....	24-1	7.5	.192	.182	1.000	0.5	0.7	5	0	0.8	13-0	6.5	.154	.182	1.000	0.2	0.3	2	0	0.6
MARKS, Megan.....	12-0	4.5	.231	.167	.333	1.2	0.1	0	4	0.7	8-0	4.8	.250	.167	.000	1.1	0.0	0	3	0.9
Nichols, Lauren.....	8-0	3.0	.000	.000	.500	0.1	0.1	1	1	0.4	1-0	1.0	.000	.000	.000	0.0	0.0	0	0	0.0
ALLETO, Amy.....	3-0	0.7	.000	.000	.500	0.0	0.0	1	0	0.3	1-0	1.0	.000	.000	.000	0.0	0.0	0	0	0.0
BELL, Marianne.....	7-0	0.7	.000	.000	.000	0.1	0.0	0	0	0.0	4-0	1.3	.000	.000	.000	0.3	0.0	0	0	0.0
JACKSON, AMY.....	1-0	0.0	.000	.000	.000	0.0	0.0	0	0	0.0	1-0	0.0	.000	.000	.000	0.0	0.0	0	0	0.0
JACKSON, Brooke....	3-0	1.0	.000	.000	.000	0.0	0.0	0	0	0.0										
BECK, Marie.....	3-0	0.0	.000	.000	.000	0.3	0.0	0	0	0.0										
Total.....	27		.385	.296	.653	38.2	13.0	175	108	53.9	15		.372	.283	.684	37.3	12.3	99	60	50.9
Opponents.....	27		.348	.299	.676	38.1	11.1	250	60	57.5	15		.340	.298	.731	38.8	11.4	127	35	57.0

SCORING	OVERALL STATISTICS									CONFERENCE STATISTICS										
	FG-FGA	FG%	3FG-FGA	3PT%	FT-FTA	FT%	PTS	PTS/G		FG-FGA	FG%	3FG-FGA	3PT%	FT-FTA	FT%	PTS	PTS/G			
CARLING, Mallary....	128-344	.372	58-179	.324	51-61	.836	365	13.5		71-187	.380	30-91	.330	27-32	.844	199	13.3			
SLADE, Shawnee.....	81-236	.343	25-85	.294	9-21	.429	196	7.3		46-129	.357	10-45	.222	2-5	.400	104	6.9			
NIELSON, Mindy.....	68-184	.370	16-53	.302	43-61	.705	195	7.2		38-111	.342	8-29	.276	29-35	.829	113	7.5			
VARLEY, Lauren.....	87-173	.503	0-1	.000	13-35	.371	187	7.2		39-79	.494	0-1	.000	6-13	.462	84	6.0			
KING, Cassie.....	47-87	.540	3-5	.600	31-42	.738	128	4.7		24-47	.511	1-2	.500	10-13	.769	59	3.9			
MOEAKI, Keilani.....	37-86	.430	1-2	.500	25-38	.658	100	3.7		7-27	.259	1-2	.500	8-12	.667	23	1.5			
WOOD, Coriann.....	30-86	.349	10-45	.222	18-20	.900	88	3.5		19-60	.317	9-33	.273	5-5	1.000	52	3.5			
Cheesman, Ashley....	30-72	.417	0-2	.000	14-31	.452	74	2.7		23-54	.426	0-2	.000	12-28	.429	58	3.9			
RED, Sarah.....	16-38	.421	8-17	.471	5-6	.833	45	2.4		14-35	.400	7-16	.438	3-4	.750	38	2.5			
Foreman, Jazmine....	16-72	.222	8-35	.229	8-16	.500	48	1.8		6-29	.207	3-16	.188	4-9	.444	19	1.3			
JUDKINS, Jaime.....	5-26	.192	4-22	.182	4-4	1.000	18	0.8		2-13	.154	2-11	.182	2-2	1.000	8	0.6			
MARKS, Megan.....	3-13	.231	1-6	.167	1-3	.333	8	0.7		3-12	.250	1-6	.167	0-0	.000	7	0.9			
Nichols, Lauren.....	0-3	.000	0-0	.000	3-6	.500	3	0.4		0-0	.000	0-0	.000	0-0	.000	0	0.0			
ALLETO, Amy.....	0-1	.000	0-0	.000	1-2	.500	1	0.3		0-0	.000	0-0	.000	0-0	.000	0	0.0			
BELL, Marianne.....	0-1	.000	0-0	.000	0-0	.000	0	0.0		0-1	.000	0-0	.000	0-0	.000	0	0.0			
JACKSON, AMY.....	0-1	.000	0-0	.000	0-0	.000	0	0.0		0-1	.000	0-0	.000	0-0	.000	0	0.0			
JACKSON, Brooke....	0-2	.000	0-1	.000	0-0	.000	0	0.0												
BECK, Marie.....	0-0	.000	0-0	.000	0-0	.000	0	0.0												
Total.....	548-1425	.385	134-453	.296	226-346	.653	1456	53.9		292-785	.372	72-254	.283	108-158	.684	764	50.9			
Opponents.....	539-1550	.348	129-432	.299	346-512	.676	1553	57.5		291-855	.340	72-242	.298	201-275	.731	855	57.0			

TOTALS	OVERALL STATISTICS										CONFERENCE STATISTICS									
	O-REB	D-REB	TOTAL	PF	FO	A	TO	A/TO	Hi	Pts	O-REB	D-REB	TOTAL	PF	FO	A	TO	A/TO	Hi	Pts
CARLING, Mallary....	13	83	96	51	2	74	87	0.9		26	9	38	47	31	1	34	38	0.9		26
SLADE, Shawnee.....	45	99	144	59	1	43	51	0.8		16	12	59	71	27	1	23	21	1.1		14
NIELSON, Mindy.....	11	68	79	47	1	78	86	0.9		16	4	39	43	29	1	59	53	1.1		16
VARLEY, Lauren.....	79	150	229	70	0	32	66	0.5		16	48	82	130	34	0	17	46	0.4		14
KING, Cassie.....	29	49	78	46	0	14	30	0.5		13	17	24	41	21	0	5	14	0.4		10
MOEAKI, Keilani.....	33	50	83	46	0	25	67	0.4		19	15	21	36	19	0	10	29	0.3		7
WOOD, Coriann.....	11	46	57	37	0	6	29	0.2		13	6	28	34	25	0	3	19	0.2		13
Cheesman, Ashley....	19	45	64	36	0	20	26	0.8		10	13	32	45	24	0	14	17	0.8		10
RED, Sarah.....	1	7	8	8	0	3	7	0.4		7	1	7	8	7	0	3	6	0.5		7
Foreman, Jazmine....	3	22	25	49	2	38	47	0.8		8	3	11	14	25	1	12	25	0.5		6
JUDKINS, Jaime.....	5	7	12	19	0	17	16	1.1		5	2	1	3	11	0	4	6	0.7		3
MARKS, Megan.....	2	12	14	14	1	1	2	0.5		3	0	9	9	9	1	0	2	0.0		3
Nichols, Lauren.....	0	1	1	3	0	1	3	0.3		2	0	0	0	0	0	0	0	0.0		0
ALLETO, Amy.....	0	0	0	0	0	0	1	0.0		1	0	0	0	0	0	0	0	0.0		0
BELL, Marianne.....	1	0	1	2	0	0	0	0.0		0	1	0	1	2	0	0	0	0.0		0
JACKSON, AMY.....	0	0	0	0	0	0	0	0.0		0	0	0	0	0	0	0	0	0.0		0
JACKSON, Brooke....	0	0	0	0	0	0	0	0.0		0	0	0	0	0	0	0	0	0.0		0
BECK, Marie.....	0	1	1	0	0	0	0	0.0		0	0	1	0	0	0	0	0	0.0		0
Total.....	298	734	1032	487	7	352	529	0.7		78	152	407	559	264	5	184	282	0.7		68
Opponents.....	375	654	1029	376	-	300	406	0.7		82	212	370	582	186	2	171	215	0.8		82

Brigham Young University
Brigham Young University Team Game-by-Game (as of Mar 06, 2008)
All games

TEAM STATISTICS

Opponent	Date	Score	W/L	---TOTAL---		--3-PTRS--		---FT-FTA---		----REBOUNDS----				PF	A	TO	Blk	Stl	Pts---Avg	
				FG-FGA	Pct	3FG-FGA	Pct	FT-FTA	Pct	Off	Def	Tot	Avg							
at UC Santa Barbara	11/09/08	61-50	W	23-46	.500	5-11	.455	10-14	.714	7	30	37	37.0	22	17	28	5	2	61	61.0
at Arkansas State	11/13/07	53-54	L	24-54	.444	3-16	.188	2-5	.400	15	24	39	38.0	21	11	24	1	4	53	57.0
FRESNO STATE	11-17-07	78-59	W	34-72	.472	5-23	.217	5-10	.500	14	41	55	43.7	17	18	19	4	6	78	64.0
HARTFORD UNIVERSITY	11-20-07	59-70	L	21-56	.375	4-17	.235	13-24	.542	13	23	36	41.8	24	11	16	2	7	59	62.8
SETON HALL	11-23-07	47-43	W	15-45	.333	4-12	.333	13-22	.591	8	29	37	40.8	13	12	19	2	7	47	59.6
at Connecticut	11/29/07	34-80	L	13-50	.260	3-16	.188	5-10	.500	9	21	30	39.0	22	5	21	1	6	34	55.3
at Sacred Heart	12/01/07	44-49	L	16-48	.333	8-20	.400	4-4	1.000	13	17	30	37.7	18	10	19	3	6	44	53.7
NEW MEXICO STATE	12-05-07	52-54	L	19-58	.328	2-18	.111	12-22	.545	15	28	43	38.4	16	13	15	3	6	52	53.5
UT VALLEY WOLVERINES	12-8-07	72-52	W	22-58	.379	8-22	.364	20-28	.714	20	30	50	39.7	15	20	23	12	17	72	55.6
at Weber State	12/12/07	54-65	L	21-48	.438	8-12	.667	4-6	.667	6	23	29	38.6	19	15	20	3	5	54	55.4
UCLA	12-15-07	68-58	W	22-57	.386	9-27	.333	15-23	.652	16	30	46	39.3	17	17	21	4	5	68	56.5
at Utah State	12/29/07	70-64	W	26-48	.542	3-5	.600	15-20	.750	10	31	41	39.4	19	19	22	8	5	70	57.7
at Colorado State	01/12/08	60-39	W	24-65	.369	7-30	.233	5-7	.714	11	31	42	39.6	16	13	16	8	6	60	57.8
UNLV	01-16-08	67-55	W	22-48	.458	2-12	.167	21-28	.750	12	28	40	39.6	20	16	23	3	9	67	58.5
UNIVERSITY OF UTAH	01-19-08	49-80	L	18-52	.346	8-18	.444	5-10	.500	9	21	30	39.0	19	11	16	3	3	49	57.9
at SAN DIEGO STATE	1-23-08	39-62	L	13-46	.283	3-19	.158	10-14	.714	13	23	36	38.8	18	8	31	4	12	39	56.7
at Univesity of New M	1/26/08	41-38	W	15-49	.306	6-17	.353	5-7	.714	14	35	49	39.4	16	10	25	3	10	41	55.8
AIR FORCE ACADEMY	01-30-08	52-47	W	20-56	.357	4-12	.333	8-10	.800	15	25	40	39.4	11	14	13	8	9	52	55.6
UNIVERSITY OF WYOMIN	02-02-08	56-42	W	23-53	.434	5-11	.455	5-6	.833	7	36	43	39.6	17	14	13	3	6	56	55.6
at TCU	2/5/08	54-73	L	25-52	.481	2-7	.286	2-6	.333	6	23	29	39.1	14	13	21	4	3	54	55.5
COLORADO STATE	02-13-08	59-44	W	22-54	.407	6-20	.300	9-14	.643	7	33	40	39.1	16	17	12	4	6	59	55.7
at UNLV	02/16/08	68-73	Lot	24-67	.358	9-25	.360	11-13	.846	16	32	48	39.5	33	14	18	1	3	68	56.2
at University of Utah	02/19/08	45-82	L	17-51	.333	4-20	.200	7-8	.875	11	16	27	39.0	17	8	18	4	3	45	55.7
SAN DIEGO STATE	02-23-08	46-43	W	18-47	.383	3-14	.214	7-12	.583	8	27	35	38.8	12	14	25	4	11	46	55.3
UNIVESITY OF NEW MEX	2/26/08	45-55	L	20-51	.392	3-14	.214	2-4	.500	6	27	33	38.6	15	11	16	2	5	45	54.9
at Air Force Academy	3/1/08	49-54	L	18-48	.375	7-19	.368	6-7	.857	11	23	34	38.4	17	14	14	5	4	49	54.7
at University of Wyom	3-5-08	34-68	L	13-46	.283	3-16	.188	5-12	.417	6	27	33	38.2	23	7	21	4	9	34	53.9
Brigham Young University		1456		548-1425	.385	134-453	.296	226-346	.653	298	734	1032	38.2	487	352	529	108	175	1456	53.9
Opponents		1553		539-1550	.348	129-432	.299	346-512	.676	375	654	1029	38.1	376	300	406	60	250	1553	57.5

Games played: 27
Points/game: 53.9
FG Pct: 38.5
3FG Pct: 29.6
FT Pct: 65.3

Rebounds/game: 38.2
Assists/game: 13.0
Turnovers/game: 19.6
Assist/turnover ratio: 0.7
Steals/game: 6.5
Blocks/game: 4.0

Brigham Young University
 Brigham Young University Game-by-Game Highs (as of Mar 06, 2008)
 All games

Opponent	Date	Score	WL	POINTS	REBOUNDS	ASSISTS	STEALS	BLOCKED SHOTS
at UC Santa Barbara	11/09/08	61-50	W	17-CARLING, Mall	11-VARLEY, Laure	5-Foreman, Jazm	1-Cheesman, Ash VARLEY, Laure	3-VARLEY, Laure
at Arkansas State	11/13/07	53-54	L	16-VARLEY, Laure	13-VARLEY, Laure	3-CARLING, Mall	1-NIELSON, Mind CHEESMAN, Ash CARLING, Mall VARLEY, Laure	1-SLADE, Shawne
FRESNO STATE	11-17-07	78-59	W	17-CARLING, Mall	13-VARLEY, Laure	5-CARLING, Mall	2-SLADE, Shawne	2-KING, Cassie
HARTFORD UNIVERSITY	11-20-07	59-70	L	19-MOEAKI, Keila	8-SLADE, Shawne	4-CARLING, Mall	3-NIELSON, Mind	2-VARLEY, Laure
SETON HALL	11-23-07	47-43	W	15-CARLING, Mall	8-VARLEY, Laure	2-SLADE, Shawne JUDKINS, Jaim CHEESMAN, Ash VARLEY, Laure	3-FOREMAN, Jazm	1-NIELSON, Mind MOEAKI, Keila
at Connecticut	11/29/07	34-80	L	10-SLADE, Shawne	6-VARLEY, Laure	1-SLADE, Shawne MOEAKI, Keila NICHOLS, Laur CARLING, Mall FOREMAN, Jazm	1-KING, Cassie SLADE, Shawne NIELSON, Mind NICHOLS, Laur WOOD, Coriann FOREMAN, Jazm	1-CARLING, Mall
at Sacred Heart	12/01/07	44-49	L	22-CARLING, Mall	8-VARLEY, Laure	2-JUDKINS, Jaim NIELSON, Mind FOREMAN, Jazm	2-CARLING, Mall	2-VARLEY, Laure
NEW MEXICO STATE	12-05-07	52-54	L	16-CARLING, Mall	11-SLADE, Shawne	6-CARLING, Mall	3-VARLEY, Laure	2-VARLEY, Laure
UT VALLEY WOLVERINES	12-8-07	72-52	W	15-SLADE, Shawne	8-VARLEY, Laure	8-FOREMAN, Jazm	5-NIELSON, Mind	5-NIELSON, Mind
at Weber State	12/12/07	54-65	L	15-NIELSON, Mind	8-VARLEY, Laure	3-JUDKINS, Jaim SLADE, Shawne	1-SLADE, Shawne NIELSON, Mind CARLING, Mall JUDKINS, Jaim FOREMAN, Jazm	2-MOEAKI, Keila
UCLA	12-15-07	68-58	W	16-CARLING, Mall	9-CARLING, Mall	6-NIELSON, Mind	1-WOOD, Coriann NIELSON, Mind KING, Cassie VARLEY, Laure SLADE, Shawne	2-KING, Cassie NIELSON, Mind
at Utah State	12/29/07	70-64	W	19-CARLING, Mall	9-VARLEY, Laure	5-CARLING, Mall	2-NIELSON, Mind	3-VARLEY, Laure
at Colorado State	01/12/08	60-39	W	13-WOOD, Coriann	14-VARLEY, Laure	6-NIELSON, Mind	3-NIELSON, Mind	2-CARLING, Mall WOOD, Coriann NIELSON, Mind VARLEY, Laure
UNLV	01-16-08	67-55	W	26-CARLING, Mall	11-VARLEY, Laure	4-NIELSON, Mind FOREMAN, Jazm	3-SLADE, Shawne	2-VARLEY, Laure
UNIVERSITY OF UTAH	01-19-08	49-80	L	21-CARLING, Mall	9-SLADE, Shawne	4-NIELSON, Mind	2-CARLING, Mall	1-KING, Cassie SLADE, Shawne NIELSON, Mind
at SAN DIEGO STATE	1-23-08	39-62	L	8-KING, Cassie	5-SLADE, Shawne	3-SLADE, Shawne	2-NIELSON, Mind CARLING, Mall KING, Cassie MOEAKI, Keila FOREMAN, Jazm	1-KING, Cassie CARLING, Mall NIELSON, Mind MOEAKI, Keila
at Univesity of New Mex	1/26/08	41-38	W	14-CARLING, Mall	12-VARLEY, Laure	5-NIELSON, Mind	4-NIELSON, Mind	3-VARLEY, Laure
AIR FORCE ACADEMY	01-30-08	52-47	W	24-CARLING, Mall	15-VARLEY, Laure	5-NIELSON, Mind	4-CARLING, Mall	5-VARLEY, Laure
UNIVERSITY OF WYOMIN	02-02-08	56-42	W	20-CARLING, Mall	12-SLADE, Shawne	5-NIELSON, Mind	2-NIELSON, Mind	1-VARLEY, Laure

Brigham Young University
Brigham Young University Game-by-Game Points-Rebounds-Assists (as of Mar 06, 2008)
All games

Opponent	Date	Score	WL	00		03		05		10		11		12		13		14		22	
				NICHOLS, L	FOREMAN, J	CHEESMAN,	BECK, MARI	JACKSON, A	JACKSON, B	JUDKINS, J	RED, SARAH	NIELSON, M									
at UC Santa Barbara	11/09/08	61-50	W	0- 1- 0	0- 2- 5	8- 2- 2	DNP	DNP	DNP	DNP	5- 3- 1	DNP	3- 0- 3								
at Arkansas State	11/13/07	53-54	L	DNP	4- 3- 2	0- 1- 2	DNP	DNP	DNP	2- 0- 0	DNP	8- 2- 0									
FRESNO STATE	11-17-07	78-59	W	1- 0- 0	8- 1- 2	0- 3- 0	0- 0- 0	DNP	DNP	0- 1- 0	2- 0- 0	11- 2- 2									
HARTFORD UNIVERSITY	11-20-07	59-70	L	DNP	0- 1- 0	0- 0- 0	0- 0- 0	DNP	0- 0- 0	DNP	3- 0- 0	8- 2- 1									
SETON HALL	11-23-07	47-43	W	DNP	4- 0- 1	2- 2- 2	DNP	DNP	DNP	0- 0- 2	DNP	3- 2- 1									
at Connecticut	11/29/07	34-80	L	2- 0- 1	4- 1- 1	2- 2- 0	DNP	DNP	0- 0- 0	0- 0- 0	DNP	2- 4- 0									
at Sacred Heart	12/01/07	44-49	L	0- 0- 0	3- 0- 2	0- 2- 0	DNP	DNP	DNP	0- 0- 2	DNP	0- 1- 2									
NEW MEXICO STATE	12-05-07	52-54	L	DNP	0- 1- 2	2- 2- 0	DNP	DNP	DNP	0- 0- 1	DNP	2- 2- 1									
UT VALLEY WOLVERINES	12-8-07	72-52	W	0- 0- 0	3- 0- 8	2- 4- 0	0- 1- 0	DNP	0- 0- 0	3- 1- 2	2- 0- 0	9- 6- 0									
at Weber State	12/12/07	54-65	L	DNP	0- 0- 2	0- 0- 0	DNP	DNP	DNP	0- 1- 3	0- 0- 0	15- 4- 1									
UCLA	12-15-07	68-58	W	0- 0- 0	3- 1- 0	0- 1- 0	DNP	DNP	DNP	0- 2- 1	DNP	15- 7- 6									
at Utah State	12/29/07	70-64	W	0- 0- 0	0- 1- 1	0- 0- 0	DNP	DNP	DNP	0- 1- 1	DNP	6- 4- 2									
at Colorado State	01/12/08	60-39	W	DNP	0- 2- 1	6- 2- 1	DNP	DNP	DNP	3- 0- 1	5- 0- 0	11- 2- 6									
UNLV	01-16-08	67-55	W	DNP	4- 2- 4	0- 1- 0	DNP	DNP	DNP	2- 0- 0	1- 0- 0	4- 3- 4									
UNIVERSITY OF UTAH	01-19-08	49-80	L	0- 0- 0	2- 0- 0	5- 0- 1	DNP	DNP	DNP	0- 0- 0	0- 0- 1	2- 3- 4									
at SAN DIEGO STATE	1-23-08	39-62	L	DNP	0- 0- 2	4- 2- 0	DNP	DNP	DNP	3- 2- 1	7- 0- 0	5- 1- 0									
at Univesity of New Mex	1/26/08	41-38	W	DNP	6- 1- 0	2- 5- 2	DNP	DNP	DNP	DNP	0- 0- 0	6- 5- 5									
AIR FORCE ACADEMY	01-30-08	52-47	W	DNP	0- 1- 0	2- 4- 0	DNP	DNP	DNP	0- 0- 0	0- 1- 0	7- 3- 5									
UNIVERSITY OF WYOMIN	02-02-08	56-42	W	DNP	0- 1- 0	0- 4- 0	DNP	DNP	DNP	0- 0- 0	0- 0- 0	13- 4- 5									
at TCU	2/5/08	54-73	L	DNP	0- 0- 1	2- 0- 1	DNP	DNP	DNP	0- 0- 0	6- 0- 1	14- 4- 4									
COLORADO STATE	02-13-08	59-44	W	DNP	3- 3- 2	10- 5- 0	DNP	0- 0- 0	DNP	0- 0- 0	3- 3- 0	3- 2- 9									
at UNLV	02/16/08	68-73	OL	DNP	2- 1- 0	0- 4- 1	DNP	DNP	DNP	0- 0- 0	6- 0- 0	16- 4- 2									
at University of Utah	02/19/08	45-82	L	DNP	0- 2- 1	1- 2- 1	DNP	DNP	DNP	0- 0- 1	3- 1- 0	5- 0- 3									
SAN DIEGO STATE	02-23-08	46-43	W	DNP	2- 1- 0	3- 5- 3	DNP	DNP	DNP	DNP	0- 0- 0	6- 1- 4									
UNIVESITY OF NEW MEX	2/26/08	45-55	L	DNP	0- 0- 0	9- 2- 3	DNP	DNP	DNP	0- 0- 0	7- 1- 1	7- 6- 3									
at Air Force Academy	3/1/08	49-54	L	DNP	0- 0- 1	5- 2- 1	DNP	DNP	DNP	0- 1- 1	0- 0- 0	8- 2- 2									
at University of Wyomin	3-5-08	34-68	L	DNP	0- 0- 0	9- 7- 0	DNP	DNP	DNP	0- 0- 0	0- 2- 0	6- 3- 3									

Opponent	Date	Score	WL	23		30		31		32		34		45		52		54		55	
				WOOD, CORI	CARLING, M	ALLETO, AM	SLADE, SHA	BELL, MARI	MOEAKI, KE	VARLEY, LA	KING, CASS	MARKS, MEG									
at UC Santa Barbara	11/09/08	61-50	W	DNP	17- 4- 4	DNP	6- 3- 1	DNP	6- 3- 1	14-11- 0	2- 2- 0	DNP									
at Arkansas State	11/13/07	53-54	L	0- 0- 0	13- 3- 3	DNP	2- 8- 0	DNP	4- 3- 0	16-13- 2	4- 2- 2	DNP									
FRESNO STATE	11-17-07	78-59	W	5- 2- 1	17- 3- 5	0- 0- 0	16- 8- 2	0- 0- 0	2- 5- 1	8-13- 3	7- 5- 1	1- 4- 1									
HARTFORD UNIVERSITY	11-20-07	59-70	L	2- 3- 0	5- 3- 4	DNP	9- 8- 2	0- 0- 0	19- 7- 3	8- 5- 1	5- 3- 0	DNP									
SETON HALL	11-23-07	47-43	W	DNP	15- 2- 1	DNP	4- 7- 2	DNP	5- 7- 0	7- 8- 2	7- 4- 1	DNP									
at Connecticut	11/29/07	34-80	L	8- 5- 0	4- 0- 1	DNP	10- 3- 1	DNP	0- 4- 1	2- 6- 0	0- 0- 0	0- 0- 0									
at Sacred Heart	12/01/07	44-49	L	4- 2- 0	22- 4- 1	DNP	3- 5- 1	DNP	4- 3- 1	8- 8- 1	0- 1- 0	0- 0- 0									
NEW MEXICO STATE	12-05-07	52-54	L	5- 4- 0	16- 5- 6	DNP	3-11- 0	DNP	6- 4- 2	12- 4- 0	6- 2- 1	DNP									
UT VALLEY WOLVERINES	12-8-07	72-52	W	5- 3- 1	13- 3- 5	1- 0- 0	15- 7- 1	0- 0- 0	2- 5- 1	9- 8- 2	8- 6- 0	0- 1- 0									
at Weber State	12/12/07	54-65	L	0- 2- 1	9- 6- 2	DNP	7- 2- 3	DNP	11- 1- 0	2- 8- 1	10- 4- 2	DNP									
UCLA	12-15-07	68-58	W	0- 0- 0	16- 9- 3	DNP	10- 6- 3	DNP	4- 1- 3	7- 6- 0	13- 5- 1	DNP									
at Utah State	12/29/07	70-64	W	7- 2- 0	19- 7- 5	DNP	7- 5- 4	DNP	14- 4- 2	10- 9- 3	7- 3- 1	DNP									
at Colorado State	01/12/08	60-39	W	13- 3- 0	7- 5- 2	DNP	2- 2- 1	0- 0- 0	1- 2- 1	8-14- 0	2- 3- 0	2- 1- 0									
UNLV	01-16-08	67-55	W	2- 2- 0	26- 3- 2	DNP	8- 1- 1	DNP	4- 6- 1	14-11- 2	2- 6- 2	DNP									
UNIVERSITY OF UTAH	01-19-08	49-80	L	3- 3- 0	21- 0- 2	0- 0- 0	5- 9- 1	DNP	7- 5- 0	4- 2- 1	0- 1- 1	0- 0- 0									
at SAN DIEGO STATE	1-23-08	39-62	L	2- 1- 0	2- 3- 1	DNP	3- 5- 3	DNP	4- 4- 1	1- 4- 0	8- 4- 0	0- 2- 0									
at Univesity of New Mex	1/26/08	41-38	W	0- 2- 0	14- 4- 2	DNP	12- 8- 0	DNP	0- 3- 0	1-12- 1	0- 0- 0	DNP									
AIR FORCE ACADEMY	01-30-08	52-47	W	0- 2- 0	24- 3- 1	DNP	8- 1- 4	DNP	2- 4- 0	9-15- 4	0- 3- 0	DNP									
UNIVERSITY OF WYOMIN	02-02-08	56-42	W	0- 2- 1	20- 4- 2	DNP	9-12- 2	0- 1- 0	2- 0- 2	2- 5- 1	10- 4- 1	0- 0- 0									
at TCU	2/5/08	54-73	L	2- 2- 0	11- 5- 0	DNP	6- 5- 1	DNP	3- 3- 2	6- 5- 3	4- 1- 0	0- 2- 0									
COLORADO STATE	02-13-08	59-44	W	5- 2- 0	5- 4- 4	DNP	14- 3- 1	DNP	0- 2- 0	11-11- 1	5- 2- 0	0- 0- 0									
at UNLV	02/16/08	68-73	OL	0- 0- 1	16- 6- 4	DNP	11- 4- 0	DNP	0- 1- 2	10-13- 3	7- 8- 1	DNP									
at University of Utah	02/19/08	45-82	L	6- 4- 0	9- 2- 2	DNP	9- 2- 0	0- 0- 0	0- 4- 0	8- 7- 0	2- 1- 0	2- 0- 0									
SAN DIEGO STATE	02-23-08	46-43	W	8- 5- 0	20- 3- 2	DNP	2- 4- 4	DNP	0- 1- 0	4- 9- 1	1- 2- 0	DNP									
UNIVESITY OF NEW MEX	2/26/08	45-55	L	0- 2- 0	14- 1- 2	DNP	2- 7- 2	DNP	0- 1- 0	4- 8- 0	2- 1- 0	DNP									
at Air Force Academy	3/1/08	49-54	L	8- 2- 1	6- 2- 5	DNP	10- 2- 2	DNP	0- 0- 1	2-14- 0	10- 3- 0	DNP									
at University of Wyomin	3-5-08	34-68	L	3- 2- 0	4- 2- 3	DNP	3- 6- 1	0- 0- 0	0- 0- 0	DNP	6- 2- 0	3- 4- 0									

Brigham Young University
 Brigham Young University Category Leaders (as of Mar 06, 2008)
 All games

FG PERCENTAGE	FG ATT	Pct
KING, Cassie.....	47 87	.540
VARLEY, Lauren.....	87 173	.503
MOEAKI, Keilani.....	37 86	.430
RED, Sarah.....	16 38	.421
Cheesman, Ashley....	30 72	.417
CARLING, Mallary....	128 344	.372
NIELSON, Mindy.....	68 184	.370
WOOD, Coriann.....	30 86	.349
SLADE, Shawnee.....	81 236	.343
MARKS, Megan.....	3 13	.231
Foreman, Jazmine....	16 72	.222
JUDKINS, Jaime.....	5 26	.192

3-POINT PERCENTAGE	3FG ATT	Pct
KING, Cassie.....	3 5	.600
MOEAKI, Keilani.....	1 2	.500
RED, Sarah.....	8 17	.471
CARLING, Mallary....	58 179	.324
NIELSON, Mindy.....	16 53	.302
SLADE, Shawnee.....	25 85	.294
Foreman, Jazmine....	8 35	.229
WOOD, Coriann.....	10 45	.222
JUDKINS, Jaime.....	4 22	.182
MARKS, Megan.....	1 6	.167
VARLEY, Lauren.....	0 1	.000
JACKSON, Brooke....	0 1	.000
Cheesman, Ashley....	0 2	.000

FT PERCENTAGE	FT ATT	Pct
JUDKINS, Jaime.....	4 4	1.000
WOOD, Coriann.....	18 20	.900
CARLING, Mallary....	51 61	.836
RED, Sarah.....	5 6	.833
KING, Cassie.....	31 42	.738
NIELSON, Mindy.....	43 61	.705
MOEAKI, Keilani.....	25 38	.658
Foreman, Jazmine....	8 16	.500
Nichols, Lauren.....	3 6	.500
ALLETO, Amy.....	1 2	.500
Cheesman, Ashley....	14 31	.452
SLADE, Shawnee.....	9 21	.429

POINTS	G	Pts	Pts/G
CARLING, Mallary....	27	365	13.5
SLADE, Shawnee.....	27	196	7.3
NIELSON, Mindy.....	27	195	7.2
VARLEY, Lauren.....	26	187	7.2
KING, Cassie.....	27	128	4.7
MOEAKI, Keilani.....	27	100	3.7
WOOD, Coriann.....	25	88	3.5
Cheesman, Ashley....	27	74	2.7
Foreman, Jazmine....	27	48	1.8
RED, Sarah.....	19	45	2.4
JUDKINS, Jaime.....	24	18	0.8
MARKS, Megan.....	12	8	0.7

FIELD GOAL ATTEMPTS	G	Att	Att/G
CARLING, Mallary....	27	344	12.7
SLADE, Shawnee.....	27	236	8.7
NIELSON, Mindy.....	27	184	6.8
VARLEY, Lauren.....	26	173	6.7
KING, Cassie.....	27	87	3.2

FIELD GOALS MADE	G	Made	Made/G
CARLING, Mallary....	27	128	4.7
VARLEY, Lauren.....	26	87	3.3
SLADE, Shawnee.....	27	81	3.0
NIELSON, Mindy.....	27	68	2.5
KING, Cassie.....	27	47	1.7

3-POINT FG ATTEMPTS	G	Att	Att/G
CARLING, Mallary....	27	179	6.6
SLADE, Shawnee.....	27	85	3.1
NIELSON, Mindy.....	27	53	2.0
WOOD, Coriann.....	25	45	1.8
Foreman, Jazmine....	27	35	1.3

3-POINT FGS MADE	G	Made	Made/G
CARLING, Mallary....	27	58	2.1
SLADE, Shawnee.....	27	25	0.9
NIELSON, Mindy.....	27	16	0.6
WOOD, Coriann.....	25	10	0.4
RED, Sarah.....	19	8	0.4
Foreman, Jazmine....	27	8	0.3

FREE THROW ATTEMPTS	G	Att	Att/G
NIELSON, Mindy.....	27	61	2.3
CARLING, Mallary....	27	61	2.3
KING, Cassie.....	27	42	1.6
MOEAKI, Keilani.....	27	38	1.4
VARLEY, Lauren.....	26	35	1.3

FREE THROWS MADE	G	Made	Made/G
CARLING, Mallary....	27	51	1.9
NIELSON, Mindy.....	27	43	1.6
KING, Cassie.....	27	31	1.1
MOEAKI, Keilani.....	27	25	0.9
WOOD, Coriann.....	25	18	0.7

SCORING AVERAGE	G	Pts	Avg/G
CARLING, Mallary....	27	365	13.5
SLADE, Shawnee.....	27	196	7.3
NIELSON, Mindy.....	27	195	7.2
VARLEY, Lauren.....	26	187	7.2
KING, Cassie.....	27	128	4.7
MOEAKI, Keilani.....	27	100	3.7
WOOD, Coriann.....	25	88	3.5
Cheesman, Ashley....	27	74	2.7
RED, Sarah.....	19	45	2.4
Foreman, Jazmine....	27	48	1.8
JUDKINS, Jaime.....	24	18	0.8
MARKS, Megan.....	12	8	0.7

Brigham Young University
 Brigham Young University Category Leaders (as of Mar 06, 2008)
 All games

REBOUNDS	G	Reb	Reb/G
VARLEY, Lauren.....	26	229	8.8
SLADE, Shawnee.....	27	144	5.3
CARLING, Mallary....	27	96	3.6
MOEAKI, Keilani.....	27	83	3.1
NIELSON, Mindy.....	27	79	2.9

REBOUND AVERAGE	G	Reb	Avg/G
VARLEY, Lauren.....	26	229	8.8
SLADE, Shawnee.....	27	144	5.3
CARLING, Mallary....	27	96	3.6
MOEAKI, Keilani.....	27	83	3.1
NIELSON, Mindy.....	27	79	2.9

OFFENSIVE REBOUNDS	G	No.	Avg/G
VARLEY, Lauren.....	26	79	3.0
SLADE, Shawnee.....	27	45	1.7
MOEAKI, Keilani.....	27	33	1.2
KING, Cassie.....	27	29	1.1
Cheesman, Ashley....	27	19	0.7

DEFENSIVE REBOUNDS	G	No.	Avg/G
VARLEY, Lauren.....	26	150	5.8
SLADE, Shawnee.....	27	99	3.7
CARLING, Mallary....	27	83	3.1
NIELSON, Mindy.....	27	68	2.5
MOEAKI, Keilani.....	27	50	1.9

FOULS	G	No.	Per/G
VARLEY, Lauren.....	26	70	2.7
SLADE, Shawnee.....	27	59	2.2
CARLING, Mallary....	27	51	1.9
Foreman, Jazmine....	27	49	1.8
NIELSON, Mindy.....	27	47	1.7

FOULOUTS	G	No.
CARLING, Mallary....	27	2
Foreman, Jazmine....	27	2
SLADE, Shawnee.....	27	1
MARKS, Megan.....	12	1
NIELSON, Mindy.....	27	1

ASSISTS	G	No.	A/G
NIELSON, Mindy.....	27	78	2.9
CARLING, Mallary....	27	74	2.7
SLADE, Shawnee.....	27	43	1.6
Foreman, Jazmine....	27	38	1.4
VARLEY, Lauren.....	26	32	1.2

STEALS	G	No.	S/G
NIELSON, Mindy.....	27	42	1.6
CARLING, Mallary....	27	35	1.3
SLADE, Shawnee.....	27	25	0.9
VARLEY, Lauren.....	26	18	0.7
Foreman, Jazmine....	27	11	0.4

BLOCKED SHOTS	G	No.	Blk/G
VARLEY, Lauren.....	26	36	1.4
NIELSON, Mindy.....	27	19	0.7
KING, Cassie.....	27	15	0.6
CARLING, Mallary....	27	10	0.4
SLADE, Shawnee.....	27	7	0.3
MOEAKI, Keilani.....	27	7	0.3

MINUTES	G	No.	Min/G
CARLING, Mallary....	27	944	35.0
SLADE, Shawnee.....	27	827	30.6
NIELSON, Mindy.....	27	745	27.6
VARLEY, Lauren.....	26	680	26.2
MOEAKI, Keilani.....	27	454	16.8

TURNOVERS	G	No.	TO/G
CARLING, Mallary....	27	87	3.2
NIELSON, Mindy.....	27	86	3.2
MOEAKI, Keilani.....	27	67	2.5
VARLEY, Lauren.....	26	66	2.5
SLADE, Shawnee.....	27	51	1.9