



# Athletic Media Relations

30 Smith Fieldhouse • Provo, Utah • 84602  
801-422-8948 • fax 801-422-0633

## MEN'S VOLLEYBALL

Game Notes — March 28-29, 2003

### Media Relations Information

Volleyball contact: Amy Boam  
E-Mail: mvolleyball\_sid@byu.edu

### BYU Record

2003: 16-5 (9-2 home, 7-3 away, 0-0 neutral)  
All-time : 241-142 (since 1990)  
Coach Peterson: 16-5

### 2003 Schedule/Results

Date	Opp/Event	Time/Results
1/17	@ Stanford*	W, 3-2
1/18	@ Stanford*	W, 3-2
1/20	@ Pacific*	L, 2-3
1/21	@ Pacific*	W, 3-2
1/31	UCLA*	W, 3-0
2/1	UCLA*	W, 3-0
2/7	UC SAN DIEGO*	W, 3-0
2/8	UC SAN DIEGO*	W, 3-1
2/14	@ UC Santa Barbara*	W, 3-0
2/15	@ UC Santa Barbara*	L, 0-3
2/20	HAWAII*	W, 3-0
2/21	HAWAII* (Marriott Center)	L, 1-3
2/28	@ USC*	W, 3-0
3/1	@ USC*	W, 3-0
3/5	CONCORDIA	W, 3-0
3/7	PENN STATE	W, 3-1
3/8	PENN STATE	L, 2-3
3/14	UC IRVINE*	W, 3-1
3/15	UC IRVINE*	W, 3-2
3/21	@ CS Northridge*	W, 3-0
3/22	@ CS Northridge*	L, 1-3
3/28	LONG BEACH STATE*	7 p.m.
3/29	LONG BEACH STATE*	7 p.m.
4/11	@ Pepperdine*	7 p.m.
4/12	@ Pepperdine*	7 p.m.
4/19	MPSF Tournament 1st Round	TBA
4/24	MPSF Tournament Semifinals	TBA
4/26	MPSF Tournament Finals	TBA
5/1-3	@ NCAA Tournament	TBA

\* MPSF Opponents  
HOME GAMES IN CAPS, all times local to site

vs.

16-5 Overall, 14-4 MPSF  
No. 3 AVCA, No. 3 MPSF

15-8 Overall, 9-7 MPSF  
No. 4 AVCA, No. 4 MPSF

### No. 3 Cougars Host No. 4 Long Beach State

PROVO, Utah (March 26, 2003) – The Cougars are set to play their last two regular-season home matches this weekend, March 28 and 29, against Mountain Pacific Sports Federation rival Long Beach State. These could prove to be two of the biggest home matches of the year for BYU in its second top-five matchup of the season.

Third ranked BYU (16-5, 14-4 MPSF) split a pair of matches last weekend with No. 7 Cal State Northridge, while fourth-ranked Long Beach State (15-8, 9-7 MPSF) is coming off a win over USC and a loss to top-ranked Pepperdine.

“We’re ranked third and Long Beach is the fourth-ranked team,” BYU head coach Tom Peterson said. “These are just great matches coming up. We’re going to need a huge crowd and we’re going to need our seniors to have good matches. We’ll need everything we’ve got to win these last two home matches.”

BYU is already guaranteed an MPSF Tournament berth, but it is in close competition with the rest of the top five teams to host the tournament. With No. 4 Long Beach this weekend and two matches at top-ranked Pepperdine in April to close out the season, the Cougars face some crucial competition and will have to give everything they’ve got to stay on top.

### Seniors Play Final Matches in the Fieldhouse

Three seniors on the BYU team will be playing their last regular-season matches in the Smith Fieldhouse this weekend. A brief ceremony will be held before the start of Saturday’s match to honor Luka Slabe, Jaime Mayol and Rafael Paal.

“It all happened too fast.” Slabe said. “I’m going to step up and play hard to beat Long Beach both nights. We want to have a good seed in the conference tournament, and we can’t afford any losses. We want to win and go to the final four.”

### Series with the 49ers

In the series, Long Beach leads 12-6 since 1990, but the teams have split their last ten matches. Last year the Cougars and the 49ers split two matches in Long Beach.

### Scouting Long Beach

The 49ers have a 15-8 overall record and are 9-7 in the MPSF, placing them

### BYU Quick Facts

Location: Provo, Utah 84602  
Enrollment: 32,122 (Daytime)  
Founded: Oct. 15, 1875, by The Church of Jesus Christ of Latter-day Saints  
Colors: Blue and White  
Nickname: Cougars  
Mascot: Cosmo (the Cougar)  
Affiliation: NCAA Division I  
Conference: Mountain Pacific Sports Federation  
Arena: Smith Fieldhouse (5,000)  
President: Merrill J. Bateman  
Athletic Director: Val Hale  
Ticket Office Phone: (801) 378-BYU1 or 1-800-322-BYU1

### Volleyball Staff:

Head Coach: Tom Peterson (BYU, 1978)  
Office Phone: (801) 422-8291  
Career Record/years: 260-132/12  
Assistant Coaches:  
Grayson DuBose (BYU, 1993)  
Shawn Patchell (BYU, 1993)  
Volunteer Coach:  
Bob Hadaway (Clayton State College, 1995)  
Trainer: Blain Empey

### Volleyball Facts:

2002 Overall Record: 23-7  
Conference Record, Finish: 16-6, 4th in MPSF  
Final 2002 National Ranking: 3rd  
Starters Returning (4):  
Rafael Paal, 6-6, Sr., OH  
Chris Gorny, 6-6, Jr., MB  
Carlos Moreno, 6-4, So., S  
Fernando Pessoa, 6-4, Jr., LIB  
Starters Lost (2):  
Mike Wall (two-time All-American, OPP)  
Joaquin Acosta (All-American, OH)  
Other Letterwinners Returning (4):  
Jonathan Alleman, 6-3, Jr., OH/OPP  
Jaime Mayol, 6-2, Sr., OH/OPP  
Luka Slabe, 6-1, Sr., OH  
Michael Burke, 6-8, So., MB  
Top Newcomer:  
Joe Hillman, 6-7, Jr., OH, Las Vegas, Nev.  
All-Conference Performers:  
Chris Gorny (2002 Honorable Mention)  
Fernando Pessoa (2002 Honorable Mention)

fourth both in the AVCA poll and in the MPSF standings. Long Beach had a six-match win streak snapped when it played top-ranked Pepperdine last week, but has won eight of its last ten matches. Junior Scott Touzinsky leads the team this season averaging 4.37 kills per game and recorded his 900th career kill vs. Penn State on March 15. Setter Tyler Hildebrand is second in the MPSF in assists per game with 14.26 and the team as a whole is among the top four in the MPSF for hitting percent (.322), kills per game (16.54) and assists (15.61).

### A Quick Look at the Cougars

The Cougars have earned a 16-5 overall record on the season. BYU's 14-4 MPSF record marks the second best in the conference after top-ranked Pepperdine. BYU's team .349 attack percentage is third-best in the nation. As a team, BYU is also among the top-five in the MPSF for assists, aces and blocking. Two Cougars, Rafael Paal and Jonathan Alleman, have earned National Player of the Week honors this season. Alleman is among the top 20 nationally for average kills (4.03) and points per game (5.15), while Paal has the highest service ace record in the MPSF, averaging .433 per contest. Sophomore middle blocker Michael Burke is ranked fourth in the conference for individual hitting percentage, averaging .467 per game, and adds a team-leading 1.31 blocks per game. Middle blocker Chris Gorny and setter Carlos Moreno are among the national and conference leaders for blocks and assists, respectively.

### Up Next

The Cougars will have a week off April 4-5, then will travel to top-ranked Pepperdine to play their final two matches of the regular season on April 11 and 12.

### BYU in the USA Today/AVCA Coaches Top-15 Poll

BYU is enjoying its fifth consecutive week at No. 3 in the polls. BYU has been ranked No. 3 in seven of this season's 11 polls, and has spent three weeks at No. 4 and one week at No. 5.

### Postseason Outlook

Currently in the number two spot in the MPSF standings behind Pepperdine, BYU is guaranteed an MPSF Tournament berth and will likely host the first round of the tournament on April 19. The top remaining seed after the first round will host the semifinal and championship rounds on April 24 and 26.

### Paal Named National Player of the Week Feb. 24



BYU senior Rafael Paal was named the AVCA/Sports Imports Division I/II Men's National Player of the Week Monday for his outstanding performance against Hawaii on Feb. 20 and 21, becoming the second BYU player to receive such honors this season. Paal, a 6-6 outside hitter from Rio de Janeiro, Brazil, led the Cougars to a 1-1 record against second-ranked Hawaii on Feb. 20 and 21. He registered 20 kills in a sweep of the Warriors Feb. 20, tying the school record for kills in a three-game match, and added five digs, three blocks and two aces while hitting .607 (20-3-28) for the match. He then garnered a team-high 17 kills, seven digs, four assists and a block in a 3-1 loss to Hawaii Friday night. Paal totaled 37 kills on the week for an average of 5.28, nearly two kills above his current season average of 3.31.

**USA Today/AVCA Coaches Poll**

(As of Mar. 26, 2003)

1. Pepperdine
2. Hawaii
3. BYU
4. Long Beach State
5. Lewis
6. Pacific
7. Cal State Northridge
8. UC Irvine
9. Penn State
10. UCLA
11. Stanford
12. Ball State
13. Loyola-Chicago
14. Ohio State
15. UC Santa Barbara

**2003 MPSF Standings**

(As of March 26, 2003)

	W	L	Overall
*Pepperdine	15	1	18-2
*BYU	14	4	16-5
Hawaii	11	5	17-5
Long Beach State	9	7	15-8
Cal State Northridge	10	8	15-9
Pacific	8	7	13-10
Stanford	8	7	11-10
UCIrvine	8	8	15-8
UCLA	8	9	13-11
UC Santa Barbara	4	13	8-16
USC	2	13	5-18
UC San Diego	1	15	5-16

\*Clinched MPSF Tournament berth

**BYU Individual Single-Match Records:**

**Kills:**

33 (33-9-50) 5g Mike Wall vs. Stanford (Apr. 20, 2002)

**Attack Percentage (min. 12 kills):**

.765 (14-1-17) Joaquin Acosta vs. Concordia (Mar. 8, 2002)

**Total Attempts:**

57 (31-8-57) 5g Mike Wall vs. UCLA (Feb. 23, 2002)

**Assists:**

84 (5g) Carlos Moreno vs. Stanford (Apr. 20, 2002)

**Digs:**

16 (5g) Fernando Pessoa at UCLA (Feb. 23, 2002)

**Aces:**

4 Carlos Moreno vs. CS Northridge (Mar. 21, 2003)

**Alleman Named National Player of the Week Jan. 20**



BYU opposite side hitter Jonathan Alleman (Yorba Linda, Calif.) was named the AVCA Division I/II Men's Volleyball Player of the Week on January 20 after leading the Cougars to two 3-2 wins over Mountain Pacific Sports Federation foe Stanford. The Cougars swept the two matches by 3-2 scores. For the two matches, Alleman recorded 60 kills (6.0 pg), hit .489 and added 7 blocks and 12 digs.

**Returning Cougars**

BYU has eight letterwinners returning from last year's 23-7 team, including 2002 All-MPSF honorees Chris Gorny (middle blocker) and libero Fernando Pessoa, outside hitter Luka Slabe, opposite Jaime Mayol, outside hitter Rafael Paal, setter Carlos Moreno, Jonathan Alleman and Michael Burke.

**BYU Numerical Roster**

Num.	Name	Ht.	Wt.	Pos.	Class	Hometown
1	Casey Patterson	6-6	195	S/OPP	So.	Newbury Park, Calif.
2	Steffin Rangel	6-5	175	OH/OPP	Fr.	Huntington Beach, Calif.
3	Michael Burke	6-8	230	MB	So.	Salt Lake City, Utah
4	Joe Hillman	6-7	193	OH	Jr.	Las Vegas, Nev.
5	Carlos Moreno	6-4	185	S	So.	Sao Paulo, Brazil
6	Chris Gorny	6-6	195	MB	Jr.	Palmdale, Calif.
7	Jaime Mayol	6-2	190	OH/OPP	Sr.	Caguas, Puerto Rico
8	David Hyte	6-8	200	MB	Jr.	Las Vegas, Nev.
9	Rafael Paal	6-6	204	OH	Sr.	Rio di Janeiro, Brazil
10	Cory Carpenter	6-7	220	MB	Jr.	Alpine, Utah
11	John Penfield	6-4	217	OH	So.	Thousand Oaks, Calif.
12	Jonathan Alleman	6-3	200	OH/OPP	Jr.	Yorba Linda, Calif.
13	Tim Layton	6-6	210	OH	So.	Anaheim, Calif.
14	Rob Neilson	6-3	180	S	Fr.	Pacific Palisades, Calif.
15	Shawn Olmstead	6-2	195	LIB	Jr.	Carpinteria, Calif.
17	Fernando Pessoa	6-4	190	LIB	Jr.	Rio di Janeiro, Brazil
18	Luka Slabe	6-1	190	OH	Sr.	Ljubljana, Slovenia
	Enoc Cardona	6-6	190	OH/OPP	Fr.	Aguada, Puerto Rico
	Taylor Evans	6-2	175	OH/LIB	Fr.	Alamo, Calif.

Tom Peterson                      Head Coach  
 Shawn Patchell                  Assistant Coach  
 Grayson DuBose                Assistant Coach  
 Bob Hadaway                    Volunteer Coach

**2003 BYU Individual Match Highs**



**Jonathan Alleman**

**Attack Percent (K-E-TA):** .684 (15-219) at USC (Mar. 1, 2003)

**Kills (K-E-TA):** 30 (30-6-46) 5g at Stanford (Jan. 18, 2003); 30 (30-8-48) 5g at Stanford (Jan. 17, 2003)

**Assists:** 5 (5g) at Stanford (Jan. 18, 2003)

**Digs:** 9 (5g) at Pacific (Jan. 20, 2003); 9 (4g) vs UC San Diego (Feb. 8, 2003)

**Aces:** 3 at UC Santa Barbara (Feb. 15, 2003)

**Blocks (BS-BA):** 5 (1-4) vs. UC San Diego (Feb. 8, 2003); 5 (1-4) at Stanford (Jan. 18, 2003); 5 (1-4) vs. Hawaii (Feb. 21, 2003)

4 Rafael Paal vs. UC Irvine (Mar. 15, 2003)  
 4 Chris Gorny vs. Pacific (Jan. 18, 2002)  
 4 Carlos Moreno vs. Ohio State (Feb. 1, 2002)  
 4 Rafael Paal vs. Stanford (Jan. 11, 2002)  
 4 Joaquin Acosta vs. La Verne (Jan. 19, 2001)  
**Blocks:**  
 13 (0-13) Scott Bunker vs. Hawaii (Apr. 14, 2001)

**BYU Team Single-Match Records:**

**Attack Percentage (min. 12 kills):**

.655 (42-4-58) at USC (Jan. 31, 2001)

**Kills:**

91 (91-30-156) 5g vs. Stanford (Apr. 20, 2002)

**Total Attempts:**

179 (89-31-179) 5g vs. UCLA (Feb. 23, 2002)

**Assists:**

91 (5g) vs. Stanford (Apr. 20, 2002)

**Digs:**

50 (5g) vs. Stanford (Apr. 20, 2002)

50 (5g) vs. UCLA (Feb. 23, 2002)

**Aces:**

8 vs. Ohio State (Feb. 1, 2002)

8 at UC Irvine (Feb. 9, 2002)

8 at Pepperdine (Mar. 3, 2001)

**Blocks:**

21.0 vs. UC Irvine (Apr. 21, 2001)

**USA Today/AVCA National Division I/II  
Players of the Week**

Jan. 20 Jonathan Alleman (BYU)  
 Jan. 27 Curt Toppel (Stanford)  
 Feb. 3 Nils Dauburs (University of the Pacific)  
 Feb. 10 Joe Nargi (CS Northridge)  
 Feb. 17 Justin Schnor (Loyola Chicago)  
 Feb. 24 Rafael Paal (BYU)  
 Mar. 3 Costas Theocharidis (Hawaii)  
 Mar. 10 Sean Rooney (Pepperdine)  
 Mar. 17 Tony Ching (Hawaii)  
 Mar. 24 Jeff Ptak (IPFW)



**Michael Burke**

**Attack Percent (K-E-TA):** .636 (8-1-11) vs. CS Northridge (Mar. 21, 2003)

**Kills (K-E-TA):** 17 (17-4-25) 5g at Pacific (Jan. 21, 2003)

**Aces:** 2 at UC Santa Barbara (Feb. 14, 2003); 2 vs. UC San Diego (Feb. 8, 2003)

**Blocks (BS-BA):** 9 (0-9) vs. Penn State (Mar. 7, 2003)



**Chris Gorny**

**Attack Percent (K-E-TA):** .667 (7-1-9) at UC Santa Barbara (Feb. 15, 2003)

**Kills (K-E-TA):** 12 (12-4-24) 5g at Stanford (Jan. 18, 2003)

**Digs:** 5 (4g) vs. UC San Diego (Feb. 8, 2003)

**Aces:** 2 vs. Hawaii (Feb. 21, 2003)

**Blocks (BS-BA):** 9 (2-7) vs. UC San Diego (Feb. 8, 2003)



**Jaime Mayol**

**Attack Percent (K-E-TA):** .706 (13-1-17) at USC (Feb. 28, 2003)

**Kills (K-E-TA):** 18 (18-8-31) 4g vs. UC Irvine (Mar. 14, 2003)

**Assists:** 3 (5g) at Stanford (Jan. 18, 2003)

**Digs:** 9 (5g) at Pacific (Jan. 20, 2003)

**Aces:** 1 vs. UC San Diego (Feb. 7, 2003)

**Blocks (BS-BA):** 5 (0-5) at Stanford (Jan. 18, 2003); 5 (1-4) at USC (Feb. 28, 2003)



**Carlos Moreno**

**Attack Percent (K-E-TA):** .857 (6-0-7) vs. Hawaii (Feb. 20, 2003)

**Kills (K-E-TA):** 7 (7-0-9) 3g vs. UCLA (Jan. 31, 2003); 7 (7-1-10) 4g vs. Penn State (Mar. 7, 2003)

**Assists:** 72 (5g) at Stanford (Jan. 17, 2003)

**Digs:** 12 (5g) at Pacific (Jan. 21, 2003)

**Aces:** 4 at CS Northridge (Mar. 21, 2003)

**Blocks (BS-BA):** 6 (2-4) vs. Penn State (Mar. 7, 2003)



**Shawn Olmstead**

**Assists:** 3 (3g) vs. UCLA (Jan. 31, 2003)

**Digs:** 12 (5g) at Pacific (Jan. 21, 2003)



**Rafael Paal**

**Attack Percent (K-E-TA):** .640 (19-3-25) vs. Hawaii (Feb. 20, 2003)

**Kills (K-E-TA):** 22 (22-6-48) 5g at Pacific (Jan. 21, 2003)

**Assists:** 4 (4g) vs. Hawaii (Feb. 21, 2003)

**Digs:** 15 (5g) at Stanford (Jan. 17, 2003)

**Aces:** 4 at Stanford (Jan. 17, 2003); 4 at Pacific (Jan. 21, 2003); 4 vs. UC Irvine (Mar. 15, 2003)

**Blocks (BS-BA):** 7 (0-7) vs. UCLA (Feb. 1, 2003)



**Fernando Pessoa**

**Assists:** 4 (5g) at Stanford (Jan. 18, 2003)

**Digs:** 15 (4g) at CS Northridge (Mar. 22, 2003)



**Luka Slabe**

**Attack Percent (K-E-TA):** .636 (8-1-11) at UC Santa Barbara (Feb. 15, 2003)

**Kills (K-E-TA):** 10 (10-3-18) 3g vs. Concordia (Mar. 5, 2003)

**Digs:** 6 (3g) vs. UCLA (Jan. 31, 2003)

**Aces:** 3 at Pacific (Jan. 21, 2003)

**Blocks (BS-BA):** 2 (1-1) vs. UCLA (Jan. 31, 2003)



**David Hyte**

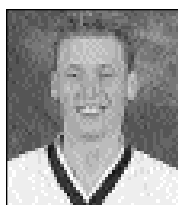
**Attack Percent** (K-E-TA): .750 (12-0-16) vs. Penn State (Mar. 8, 2003)

**Kills** (K-E-TA): 12 (12-0-16) vs. Penn State (Mar. 8, 2003)

**Digs:** 2 (5g) vs. Penn State (Mar. 8, 2003)

**Aces:** 1vs. Concordia (Mar. 5, 2003)

**Blocks** (BS-BA): 4 (0-4) vs. Penn State (Mar. 8, 2003)



**Casey Patterson**

**Attack Percent** (K-E-TA):

**Kills** (K-E-TA): 1 (1-1-2) vs. Concordia (Mar. 5, 2003)

**Digs:** 2 (3g) vs. Concordia (Mar. 5, 2003)

**Aces:** 1vs. UCIrvine (Mar. 15, 2003)

**Blocks** (BS-BA): 1 (0-1) vs. Penn State (Mar. 8, 2003)



**Joe Hillman**

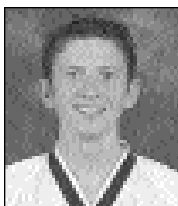
**Attack Percent** (K-E-TA): .667 (7-1-9) vs. Concordia (Mar. 5, 2003)

**Kills** (K-E-TA): 7 (7-1-9) vs. Concordia (Mar. 5, 2003)

**Digs:** 4 (3g) vs. Concordia (Mar. 5, 2003)

**Aces:**

**Blocks:** (BS-BA): 2 (0-2) vs. Concordia (Mar. 5, 2003)



**Steffin Rangel**

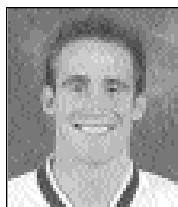
**Attack Percent** (K-E-TA): .333 (5-2-9) vs. Concordia (Mar. 5, 2003)

**Kills** (K-E-TA): 5 (5-2-9) vs. Concordia (Mar. 5, 2003)

**Digs:** 4 (3g) vs. Concordia (Mar. 5, 2003)

**Aces:** 1 vs. Concordia (Mar. 5, 2003)

**Blocks:**



**Tim Layton**

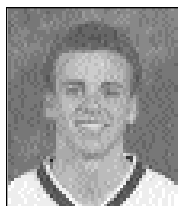
**Attack Percent** (K-E-TA): .600 (4-1-5) vs. Concordia (Mar. 5, 2003)

**Kills** (K-E-TA): 4 (4-1-5) vs. Concordia (Mar. 5, 2003)

**Digs:**

**Aces:** 1 vs. Concordia (Mar. 5, 2003)

**Blocks:** (BS-BA): 3 (0-3) vs. Concordia (Mar. 5, 2003)



**Rob Neilson**

**Assists:** 2 (4g) at CS Northridge (Mar. 22, 2003)

**Kills:**

**Digs:**

**Aces:**

**Blocks:**