



No. 22 All-Time Victories NCAA Division I • 2 National Titles (NIT 1951, 1966) • 26 Conference Titles • 21 NCAA Tournaments • 30 Postseason Invitations  
 1 National Player of the Year • 2 Basketball Hall of Fame Inductees • 40 All-America Citations • 43 NBA Draft Selections • 98 All-Conference Citations

# BYU COUGAR BASKETBALL

## Game 7 - BYU vs. Northern Kentucky

### 2005-06 BYU SCHEDULE/RESULTS

#### NOVEMBER

|           |                                |       |   |
|-----------|--------------------------------|-------|---|
| 4 (Fri.)  | Victoria (exhibition)          | 81-54 | W |
| 10 (Thu.) | Seattle Pacific (exhibition)   | 86-72 | W |
| 18 (Fri.) | Loyola Marymount               | 71-83 | L |
| 22 (Tue.) | vs. Washington State (Spokane) | 76-68 | W |
| 26 (Sat.) | Southern Utah                  | 86-61 | W |
| 30 (Wed.) | vs. Lamar (Delta Center, SLC)  | 97-74 | W |

#### DECEMBER

|           |                          |        |   |
|-----------|--------------------------|--------|---|
| 3 (Sat.)  | @USC                     | 68-74  | L |
| 7 (Wed.)  | Boise State              | 80-77  | W |
| 10 (Sat.) | Northern Kentucky        | 7 p.m. |   |
| 17 (Sat.) | Weber State (SportsWest) | 6 p.m. |   |
| 22 (Thu.) | @Utah State (KJZZ-TV)    | 7 p.m. |   |
| 27 (Tue.) | Eastern Washington       | 7 p.m. |   |
| 30 (Fri.) | Tulsa                    | 7 p.m. |   |

#### JANUARY

|           |                              |        |  |
|-----------|------------------------------|--------|--|
| 5 (Thu.)  | *@Air Force (ESPN2)          | 9 p.m. |  |
| 7 (Sat.)  | *Utah (ESPN+)                | 1 p.m. |  |
| 11 (Wed.) | *@UNLV (SportsWest)          | 7 p.m. |  |
| 18 (Wed.) | *Wyoming (SportsWest)        | 7 p.m. |  |
| 21 (Sat.) | *@San Diego St. (SportsWest) | 7 p.m. |  |
| 25 (Wed.) | *TCU                         | 7 p.m. |  |
| 28 (Sat.) | *@Colorado State             | 7 p.m. |  |

#### FEBRUARY

|           |                               |        |  |
|-----------|-------------------------------|--------|--|
| 1 (Wed.)  | *@New Mexico (SportsWest)     | 7 p.m. |  |
| 4 (Sat.)  | *Air Force (ESPN+)            | 1 p.m. |  |
| 8 (Wed.)  | *@Utah (KJZZ-TV)              | 7 p.m. |  |
| 11 (Sat.) | *UNLV (ESPN2)                 | 6 p.m. |  |
| 18 (Sat.) | *@Wyoming (SportsWest)        | 3 p.m. |  |
| 22 (Wed.) | *San Diego State (SportsWest) | 7 p.m. |  |
| 25 (Sat.) | *@TCU                         | 7 p.m. |  |

#### MARCH

|          |  |        |  |
|----------|--|--------|--|
| 1 (Wed.) | *Colorado State                        | 7 p.m. |  |
| 4 (Sat.) | *New Mexico (SportsWest)               | 7 p.m. |  |
| 9-11     | MWC Tournament in Denver (ESPN, ESPN+) |        |  |

Game times are local to site and subject to change  
 Additional television games are yet to be determined  
 \*denotes Mountain West Conference game

### BYU HOSTS NORTHERN KENTUCKY SATURDAY AT 7 P.M.

BYU stays at home to host Northern Kentucky (6-0, 3-0 Great Lakes Valley Conference) Saturday at 7 p.m. in the Marriott Center. The Division II Norse out of Highland Heights, Ky., will be playing the their first Division I opponent since the 1994-95 season when they face the Cougars Saturday. The game will be broadcast live on KSL Newsradio, which can be heard on 102.7 FM or 1160 AM. Greg Wrubell and Mark Durrant will call the game, which is also available online at KSL.com. The game is not being televised.

### UP NEXT

With final exams being conducted next week, BYU will have a full week to prepare for Weber State (3-4, 0-0 Big Sky). The Wildcats visit the Marriott Center on Saturday, Dec. 17 at 6 p.m. BYU's first televised contest of the season, the game is a SportsWest telecast airing on KSL-TV, channel 5.

### COUGAR QUICK HITS

- Coming off a disappointing 9-21 season after five straight postseason appearances, BYU looks to return to the ranks of conference contenders and postseason invitees under the direction of new head coach Dave Rose.
- Rose enters his first year leading the Cougars after serving the past eight seasons as Steve Cleveland's lead assistant, including five years as associate head coach. After Cleveland announced his resignation to take the Fresno State job, BYU moved quickly to promote Rose to BYU's head position.
- Among BYU's returning players, honorable mention All-MWC guard Austin Ainge was the team's second-leading scorer and top assist man last year, and junior forward Keena Young was BYU's leading rebounder. Other returners with starting experience include junior swingman Jimmy Balderson, who represented Canada at the World University Games this summer; junior center Derek Dawes, who made 13 starts in the middle last year; and junior guard Mike Rose, who made seven starts last year and averaged 7.7 points while making a team-leading 56 treys. Lone senior Brock Reichner has started the last five games this season after mostly limited action last year.
- Trent Plaisted leads BYU in scoring (15.8), followed by Jimmy Balderson (12.8). Plaisted is also the top Cougar rebounder (5.8), followed by Keena Young (4.5). Rashaun Broadus is the top assist maker (5.2), followed by Austin Ainge (3.3). The Cougars average 79.7 points and shoot .484 as a team, .426 from long range and .691 from the line. Cougar opponents average 72 points on .427 shooting, .341 from three and .740 from the line..

### GAME #7 FAST FACTS

### BYU COUGARS (4-2, 0-0 MWC)

VS.

### NORTHERN KENTUCKY NORSE (6-0, 3-0 Great Lakes Valley)

Saturday, Dec. 10, 2005  
 Marriott Center (22,700)

Provo, Utah  
 7:05 p.m. MST

Coaches: BYU, Dave Rose (4-2 in first year; same overall)  
 NKU, Dave Bezold (20-15 in second season; same overall)

Series: First Meeting

TV: None

Radio: KSL Newsradio, BYU Sports Network (Greg Wrubell, play-by-play; Mark Durrant, game analysis)

Web: Live audio and live stats broadcasts are available at [www.byucougars.com/basketball\\_m/](http://www.byucougars.com/basketball_m/)

### BYU'S PROBABLE STARTERS:

| POS. # | NAME             | HT.  | WT. | YR. | HOMETOWN / LAST TEAM                      | PPG  | RPG | NOTE   |
|--------|------------------|------|-----|-----|---|------|-----|--|
| G 1    | Rashaun Broadus  | 6-0  | 195 | Jr. | Mililani, HI / Western Nebraska CC        | 7.8  | 4.2 | JC transfer adds MWC-leading 5.2 assists per game                    |
| G 11   | Brock Reichner   | 6-4  | 205 | Sr. | Provo, UT / Salt Lake Community College   | 8.3  | 1.8 | Lone senior serves as team's co-captain along with Austin Ainge      |
| G 23   | Jimmy Balderson  | 6-6  | 200 | Jr. | Magrath, Alberta / Magrath HS             | 12.8 | 4.0 | Second-leading scorer has posted double figures in five of six games |
| F 15   | Fernando Malaman | 6-9  | 215 | Jr. | Limeira, Brazil / Arizona Western College | 9.5  | 3.8 | Shooting .647 from the floor, including 8-of-11 treys (.727)         |
| F 44   | Trent Plaisted   | 6-11 | 245 | Fr. | San Antonio, TX / Clark HS                | 15.8 | 5.8 | Redshirt freshman has scored in double figures each game             |

### BYU OFF THE BENCH:

| POS. # | NAME             | HT.  | WT. | YR. | HOMETOWN / LAST TEAM                        | PPG | RPG | NOTE  |
|--------|------------------|------|-----|-----|---|-----|-----|---|
| G 2    | Mike Rose        | 6-2  | 185 | Jr. | Houston, TX / Spring Woods HS               | 4.3 | 1.2 | Led BYU in three-point shots made last year with 56                     |
| F 3    | Keena Young      | 6-6  | 205 | Jr. | Beaumont, TX / South Plains College         | 4.8 | 4.5 | Last year's leading rebounder is second on the boards this year         |
| G 4    | Jackson Emery    | 6-3  | 175 | Fr. | Alpine, UT / Lone Peak HS                   | 4.0 | 0.3 | Utah HS Mr. Basketball recipient in 2005; scored 9 points at USC        |
| G 13   | Austin Ainge     | 6-2  | 180 | Jr. | Gilbert, AZ / Highland HS                   | 3.3 | 2.0 | Adds 3.3 assists/game - fifth in MWC; 4.1 apg last year was No. 3       |
| G 30   | Lee Cumnard      | 6-6  | 175 | Fr. | Mesa, AZ / Mesa HS                          | 4.8 | 1.7 | Freshman is shooting .556 on three-pointers (5-of-9)                    |
| C 34   | David Burgess    | 6-10 | 250 | Fr. | Irvine, CA / Woodbridge HS                  | 0.7 | 1.7 | Medical redshirt did not play in the last two games                     |
| F 41   | Jermaine Odjegba | 6-7  | 190 | Fr. | West Palm Beach, FL / Palm Beach Gardens HS | 1.0 | 1.0 | Returned in June from LDS mission; has played in two games this year    |
| C 43   | Derek Dawes      | 6-11 | 275 | Jr. | Salt Lake City, UT / Cottonwood HS          | 5.0 | 1.5 | Missed first two games (injury); shooting .750 in last four appearances |



**BYU SERIES RECORD VS. UPCOMING OPPONENTS**

|                           |  |
|---------------------------|--|
| <b>Northern Kentucky</b>  | First meeting  |
| <b>Weber State</b>        | BYU leads, 20-10<br>Last outing: Dec. 23, 2004 @ Weber State<br>Result: BYU 79, WSU 61               |
| <b>Utah State</b>         | BYU leads, 133-89<br>Last outing: Dec. 18, 2004 @ BYU<br>Result: USU 84, BYU 62                      |
| <b>Eastern Washington</b> | BYU leads, 1-0<br>Last outing: Nov. 25, 1989 @ BYU<br>Result: BYU 96, EWU 84                         |
| <b>Tulsa</b>              | BYU leads 6-4<br>Last outing: March 3, 1998 in Las Vegas<br>Result: Tulsa 59, BYU 56                 |
| <b>Air Force</b>          | BYU leads, 42-11<br>Last year: AFA swept the season series<br>Last result: AFA won 70-39 @ AFA       |
| <b>Utah</b>               | Utah leads, 122-117<br>Last year: Utah swept season series<br>Last result: Utah won 69-60 @ Utah     |
| <b>UNLV</b>               | BYU leads, 10-9<br>Last year: split series with road wins<br>Last result: UNLV won 76-66 @ BYU       |
| <b>Wyoming</b>            | BYU leads, 92-69<br>Last year: Wyoming swept season series<br>Last result: Wyoming won 59-58 @ BYU   |
| <b>San Diego State</b>    | BYU leads, 38-18<br>Last year: SDSU swept season series<br>Last result: SDSU won 66-58 @ SDSU        |
| <b>TCU</b>                | BYU leads, 4-3<br>Last outing: March 2, 1999 in Las Vegas<br>Result: BYU 90, TCU 74                  |
| <b>Colorado State</b>     | BYU leads, 78-45<br>Last year: split series with home wins<br>Last result: BYU won 50-49 @ BYU       |
| <b>New Mexico</b>         | BYU leads, 67-50<br>Last year: UNM won two of three meetings<br>Last result: UNM won 85-71 in Denver |

**LOOKING AT NORTHERN KENTUCKY**

The Northern Kentucky University Norse are off to a 6-0 start, including a 3-0 record in the Great Lakes Valley Conference. The Division II program won its first five games at home before hitting the road for three games in five days. The Norse won their first game of the trip on Tuesday at Indianapolis, but were unable to complete Thursday's game at Saint Joseph's in Rensselaer, Ind., before the game was suspended due to a power outage. NKU's game at BYU will mark the first time in 11 years that the Norse have met a Division I opponent in the regular season. NKU has not played a Division I opponent since the 1994-95 season, when the Norse dropped an 85-63 decision at Toledo. Junior Kevin Reinhardt, a 6-foot-4 forward, leads the Norse in scoring (15.2) and rebounding (7.5) in 31.2 minutes per game. NKU 6-foot-3 junior guard/forward Kevin Schappell adds 14.3 points coming off the bench in 28 minutes per game. Last week he averaged 20 points in two GLVC victories. He began with a 16-point performance during a 58-55 win over Rockhurst before scoring a career-high 24 points to lead NKU past Drury, 64-46. In that game, Schappell made five three-pointers and had three steals. Schappell is shooting 62.8 percent from the field and 61.9 percent from three-point range, while converting 86.4 percent of his free throws. His 13 treys leads the team. Norse 6-foot-8 senior center Gavin Ludgood averaged 13 points in last week's two victories. After Tuesday's road win, Ludgood averages 9.3 points overall and is shooting 58.1 percent from the field. NKU leads the GLVC in free-throw percentage (.783) and features seven players shooting at least 80 percent from the charity line. NKU also ranks No. 1 in the GLVC in three-point percentage at .458. The Norse shoot .483 overall while opponents have shot .430 from the floor, .347 from long range and .688 from the line. NKU averages 69.5 points while allowing 60.3 ppg.

**NORSE GAME THURSDAY SUSPENDED**

RENSELAER, Ind. - A power outage in the Scharf Alumni Fieldhouse caused Thursday night's Northern Kentucky at No. 8 Saint Joseph's game to be suspended in the second half. Saint Joseph's owned a 57-40 lead with 6:30 left in the game when the power went out in the gym. The Pumas entered the game ranked No. 8 nationally and are 7-0, while NKU is also unbeaten (6-0). The game will be resumed at the point of stoppage later in the season. The most likely date to complete the game is Feb. 22, but an official announcement will be made next week.

**NKU's PREVIOUS OUTING – Morton, Finnell Spark Norse Victory at Indianapolis**

INDIANAPOLIS - The depth of Northern Kentucky University paid off once again during a 67-61 victory against Indianapolis on Tuesday night at Nicoson Hall. As a result, the unbeaten Norse (6-0 overall) are in sole possession of first place in the Great Lakes Valley Conference East with a 3-0 record. Harrison Morton came off the bench and scored eight key points in the second half for NKU, and reserve guard Billy Finnell drained a clutch 3-pointer in the final minute to seal the victory. Kevin Schappell, who was named the GLVC Player of the Week on Monday, added nine points off the bench as NKU won in Nicoson Hall for the first time since the 2001-02 season. The Norse bench totaled 27 points, 12 rebounds and four steals Tuesday night. Morton, a sophomore forward from Lexington, Ky., had three steals. NKU head coach Dave Bezold was not surprised by Morton's performance. "He had two very good practices this week, and I told our coaches that he had a different bounce about him," Bezold said. "He came up very big in the second half when we were stagnant offensively. Harrison has been working hard in practice, and it showed on the court tonight." Kevin Reinhardt finished with 16 points and seven rebounds to lead NKU, while Vincent Humphrey added 14 points. The Norse shot 52.2 percent from the field - including 66.7 percent in the second half - to hold off the Greyhounds. NKU held a 27-17 lead with just under six minutes left in the first half when David McFarland hit a 3-pointer; but Indianapolis closed with a 12-4 run to pull within 31-29 at the break. The Norse led by seven points several times in the second half, but a layup by Braxton Mills with 1:33 remaining pulled Indianapolis within 60-57. Mills was also fouled on the play, but he missed the free throw. NKU called a timeout with 42 seconds remaining and the shot clock showing 11 seconds. With the shot clock winding down, Finnell launched a 3-pointer that found the bottom of the net and extinguished any last-second comeback hopes for Indianapolis. "They had the momentum, and they were playing a zone against us," Bezold said. "Billy stepped up and took the big shot. Once it went in, it was a big relief." Gavin Ludgood scored eight points for the Norse, and McFarland added six points. Finnell finished with four points, three assists and four rebounds.

**NKU's PROBABLE STARTERS**

| No | Name             | Pos | Ht  | Wt  | Cl  | Hometown / Previous School      | PPG  | RPG |
|----|------------------|-----|-----|-----|-----|---------------------------------|------|-----|
| 42 | Kevin Reinhardt  | F   | 6-4 | 180 | Jr. | Wilder, Ky. / Campbell County   | 15.2 | 7.5 |
| 34 | Gavin Ludgood    | C   | 6-8 | 235 | Sr. | Clarksville, Ark. / Clarksville | 9.3  | 4.3 |
| 5  | Vincent Humphrey | G/F | 6-4 | 195 | So. | Plainfield, Ill. / Fenwick      | 9.0  | 2.5 |
| 10 | Scott Bibbins    | G   | 5-9 | 145 | Fr. | Taylor Mill, Ky. / Holy Cross   | 0.7  | 0.3 |
| 22 | Mark Hawkins     | G   | 6-2 | 185 | So. | Cincinnati, Ohio / Finneytown   | 3.0  | 0.8 |

**SERIES NOTES**

This is the first meeting between the two teams. Northern Kentucky will be facing its first Division I opponent since the 1994-95 season. BYU's last game against a Division II team was its 110-70 victory over Montana State-Billings last season on Jan. 11 in the Marriott Center. BYU also faced Division II Chaminade last year at the Maui Invitational, winning by a 77-56 score. The last time BYU played a team from the state of Kentucky was on Nov. 25, 1994, when the Cougars defeated Louisville 75-60 at the Great Alaska Shootout. The last time a team from Kentucky played BYU in the Marriott Center was on Dec. 7, 1990, when the Cougars defeated Eastern Kentucky 90-86 in the Cougar Classic. In that game, BYU freshman center Shawn Bradley tied the NCAA record, which he still shares, with 14 blocked shots.





BYU center Derek Dawes has been part of the Children with Cancer Christmas Foundation Christmas Party the past four years.

**COUGARS SET TO HELP AT CHILDREN WITH CANCER CHRISTMAS PARTY**

For the seventh year, the BYU men's basketball team has joined the Children with Cancer Christmas Foundation in an effort to raise money for families who have children with cancer and participate in the Foundation's annual Christmas party those families.

This year's Christmas party will be held Wednesday at 6:30 p.m. in the LaVell Edwards Stadium Cougar Room. Parents will be invited to the Cougar Room on Tuesday to choose the gifts their children will receive. The gifts will then be distributed at the party. The BYU coaching staff and their wives will be helping the Foundation shop for gifts on Monday morning.

This is the seventh year BYU coaches, players and their families have volunteered for the Christmas party. Though he has been heavily involved with the Foundation during his eight years as an assistant coach at BYU, this year will be head coach Dave Rose's first opportunity to serve as honorary chairman.

"This has always been a cause I feel strongly about," said BYU coach Dave Rose. "It has been such a positive experience for the coaches, players and families and is a tremendous opportunity for community members to be involved in brightening the holiday season for these children."

Cheryl Rose, vice chairman of the Foundation and wife of coach Rose, discussed the challenges these families face financially and how the Foundation hopes to help these families now and in the future.

"For many of these families, it is financially impossible to always have food on the table, a roof over their heads or even have Christmas," Cheryl Rose said. "We want to create a Christmas experience that they will never forget and hopefully in the future help families meet those basic needs that they can't on their own."

Rose says that asking for donations has usually been difficult for her, but with such a meaningful cause it has been easy. It has enriched her life, which is something she hopes others will enjoy by contributing to these families.

"It's a privilege for me to associate with these families," she said. "They are such an example to me. Even with all that they've been through, they have such a strength and passion for life. It's almost selfish on my part to be involved because I get so much out of it."

One hundred percent of the money donated to the Foundation will go directly towards the Christmas party for more than 90 families who have children with cancer living primarily in Utah County. A large portion of the money donated will purchase hundreds of toys that will enable these parents to have gifts under the Christmas tree for their children. In addition to all of these toys, the Christmas Party will include food, free entertainment, such as games and ornament decorating, and local celebrities including Santa, Cosmo and the BYU men's and women's basketball team.

In addition to collecting money, the Foundation is collecting any unwrapped toys that can be dropped off at the nearest Far West Bank or Harmon's Down Town Auto Center located in Provo.

For more information about donating to the Children With Cancer Christmas Foundation, contact Cheryl Rose at (801) 375-5768 or Bob Brockbank at (801) 802-8881. You can also visit their website at [www.christmas-foundation.org](http://www.christmas-foundation.org).

"The support we get from the community makes this event possible," Cheryl Rose said. "We couldn't serve these children without the donations of time, money and gifts we receive."



**Greg Wrubell**

**BYU BASKETBALL ON KSL NEWSRADIO**

(102.7 FM and 1160 AM)

The "Voice of the Cougars" is KSL Newsradio 1160's Greg Wrubell. He is in his 10th season as the play-by-play voice of BYU basketball. Wrubell, also the voice of BYU foot-

ball, is joined by former Cougar lettermen Mark Durrant and Russell Larson (for select broadcasts) as color analysts. Durrant has been part of the KSL broadcast team for nine years while Larson is in his first season as an analyst. In addition to live coverage of every Cougar game, the following programs can be heard each week on KSL Newsradio.

**COACH ROSE ON KSL NEWSRADIO ...**

- Coach's Corner with Dave Rose  
Mondays at 8:45 a.m.
- The Dave Rose Show  
Mondays from 7-8 p.m.

**THE DAVE ROSE SHOW ON KSL-TV**

BYU coach Dave Rose's weekly television show airs each Sunday evening at 11 p.m. on KSL-TV, channel 5 in Salt Lake City.



BYU coach Dave Rose and his wife Cheryl enjoy time at last year's Christmas Party conducted by the Children with Cancer Christmas Foundation.

**COUGAR ROSTER BREAKDOWN****STARTERS RETURNING (4)**

| Name            | Pos. | Yr. | 2004-05 Stats             |
|-----------------|------|-----|---------------------------|
| Austin Ainge    | G    | Jr. | 9.5 ppg, 2.9 rpg, 4.1 apg |
| Keena Young     | F    | Jr. | 7.2 ppg, 5.6 rpg          |
| Jimmy Balderson | G    | Jr. | 6.7 ppg, 2.3 rpg          |
| Derek Dawes     | C    | Jr. | 4.9 ppg, 4.6 rpg          |

**STARTERS LOST (3)**

|               |   |     |                   |
|---------------|---|-----|-------------------|
| Mike Hall     | G | Sr. | 13.9 ppg, 3.5 rpg |
| Jared Jensen  | C | Sr. | 8.5 ppg, 4.1 rpg  |
| *Garner Meads | F | So. | 4.4 ppg, 4.3 rpg  |

**OTHER LETTERWINNERS RETURNING (3)**

|                |   |     |                  |
|----------------|---|-----|------------------|
| Mike Rose      | G | Jr. | 7.7 ppg, 1.7 rpg |
| Brock Reichner | G | Sr. | 2.5 ppg, 1.5 rpg |
| Sam Burgess    | G | Jr. | 2.1 ppg, 0.9 rpg |

**OTHER LETTERWINNERS LOST (2)**

|                 |   |     |                  |
|-----------------|---|-----|------------------|
| **Chris Miles   | F | Fr. | 2.7 ppg, 2.3 rpg |
| #Joshua Burgess | F | Jr. | 0.6 ppg, 0.4 rpg |

**REDSHIRTS RETURNING (3)**

|                    |   |     |
|--------------------|---|-----|
| David Burgess      | C | Fr. |
| ^ Jermaine Odjegba | F | Fr. |
| Trent Plaisted     | F | Fr. |

**NEWCOMERS (5)**

|                  |   |      |     |     |
|------------------|---|------|-----|-----|
| Rashaun Broadus  | G | 6-0  | 195 | Jr. |
| Lee Cummond      | G | 6-6  | 175 | Fr. |
| Jackson Emery    | G | 6-3  | 175 | Fr. |
| ^^Vuk Ivanovic   | C | 6-10 | 250 | Jr. |
| Fernando Malaman | F | 6-9  | 215 | Jr. |

\* playing career ended due to injury, staying in school to finish degree

\*\* Leaving school to serve a two-year LDS Church mission

# walk-on player decided to discontinue playing, staying in school to finish degree

^ returned from two-year mission, redshirted on 2003 team

^^ must sit out 2005-06 season due to transfer rules

**BY POSITION****POINT GUARD**

|                 |     |     |
|-----------------|-----|-----|
| Austin Ainge    | 6-2 | Jr. |
| Rashaun Broadus | 6-0 | Jr. |
| Brock Reichner  | 6-4 | Sr. |

**SHOOTING GUARD**

|                 |     |     |
|-----------------|-----|-----|
| Austin Ainge    | 6-2 | Jr. |
| Jimmy Balderson | 6-6 | Jr. |
| Sam Burgess     | 6-3 | Jr. |
| Lee Cummond     | 6-6 | Fr. |
| Jackson Emery   | 6-3 | Fr. |
| Brock Reichner  | 6-4 | Sr. |
| Mike Rose       | 6-3 | Jr. |

**SMALL FORWARD**

|                  |     |     |
|------------------|-----|-----|
| Jimmy Balderson  | 6-6 | Jr. |
| Lee Cummond      | 6-6 | Fr. |
| Jermaine Odjegba | 6-7 | Fr. |
| Brock Reichner   | 6-4 | Sr. |
| Keena Young      | 6-6 | Jr. |

**POWER FORWARD**

|                  |      |     |
|------------------|------|-----|
| Fernando Malaman | 6-9  | Jr. |
| Trent Plaisted   | 6-11 | Fr. |
| Keena Young      | 6-6  | Jr. |
| %Vuk Ivanovic    | 6-10 | Jr. |

**CENTER**

|                |      |     |
|----------------|------|-----|
| David Burgess  | 6-10 | Fr. |
| Derek Dawes    | 6-11 | Jr. |
| Trent Plaisted | 6-11 | Fr. |
| %Vuk Ivanovic  | 6-10 | Jr. |

%must sit out this season due to transfer rules

**BYU's LAST OUTING — Cougars Buck The Broncos**

PROVO, Utah (Dec. 7, 2005) – Freshman Trent Plaisted and junior Fernando Malaman led BYU with 19 and 17 points, respectively, as the Cougars (4-2) held off Boise State (3-3) 80-77 Wednesday night in the Marriott Center. After falling behind by eight points in the first half, the Cougars outscored the Broncos 44-33 in the second half to pick up the victory. Boise State took an early lead, starting the game on a 7-0 run. The Cougars battled back to tie the game 16-16 with 11:25 remaining in the first half. The Broncos held off the Cougars' first-half surge by relying on their three-point shot, going 6-for-10 from three-point range to take a 44-36 halftime lead. The Cougars came out strong in the second half, running the floor well and going on a 14-2 run to take their first lead of the game, 49-46, with 17:13 left to play. The Cougar run was led by senior Brock Reichner who hit back-to-back three-pointers. BYU had a 72-60 lead with 4:51 left in the game, but the Broncos fought back to tie the game at 75-75 with 2:12 remaining. After big baskets from both Plaisted and Malaman, Boise State's Tyler Tiedeman put up a three-pointer for a chance to tie the game, but the shot fell short and the Cougars pulled off the win, 80-77. Plaisted finished the night shooting 7-for-12 from the field and 5-for-8 from the free-throw line to pick up his 19 points. He also led the Cougars in rebounds with 10, recording the first double-double of his career as well as the first for the Cougars this season. Malaman's 17 points marked a career high for the forward. He shot 7-for-10 on the night, including 2-for-3 from the three-point line. He also rejected three shots on the night, which was also a career high. As a team, BYU struggled in the first half, shooting just 38.7 percent from the field, but improved in the second half with a 48.6 shooting percentage. After Boise State shot 6-for-10 from the three-point line, the Cougars picked up their perimeter defense and held the Broncos to just 1-for-7 three-point shooting in the second half. Boise State was led by forward Seth Robinson, who finished the game with 15 points, shooting 7-for-9 from the field. Guard Coby Karl also added 14 points for the Broncos, shooting 4-for-11 from the field, including 2-for-4 from the three-point line and 4-for-4 from the free-throw line.

**WHAT WAS SAID AFTER THE GAME ...****BYU Head Coach Dave Rose:**

- "This is a team that's learning – learning how to win and learning how to play. I thought it was a great game for our team."
- "It's a learning process with this team. For the most part, we won this game because we gutted it out."
- "You become a better team when guys make things happen for other players and not themselves."
- "I told the guys in the locker room that games like this are what make teams better. You can't just play them; you've got to win them."

**Boise State Head Coach Greg Graham:**

- "It was a very good college basketball game – up tempo, lots of threes, and the big guys still got a lot of points. Kids on both sides were battling hard. Except for the outcome, you can't ask for a better basketball game."
- "BYU's got a good ball club, and they're going to get better. They're a young, talented team."

**BYU NOTES FROM LAST OUTING**

- After using 18 different starting lineups last season, the Cougars have used the same starting five in each of the last five games (Broadus, Reichner, Balderson, Malaman, Plaisted), going 4-1 in those games.
- Individual Career Highs: Fernando Malaman - 17 points, 7 field goals made, 10 field goals attempted, 5 rebounds (tie), 3 blocks; Brock Reichner – 3 three-point field goals made (tie), 7 three-point field goals attempted, 5 assists; Rashaun Broadus – 11 points (tie); Trent Plaisted – 10 rebounds.
- Trent Plaisted recorded the first double-double by any Cougar this season with 19 points and 10 rebounds.
- Plaisted also recorded his seventh dunk of the year with a high-flyer during BYU's 14-4 second-half run. The redshirt freshman has recorded at least one dunk in every game this season except against Southern Utah.
- Five Cougars scored in double figures on the night for the first time since Dec. 28, 2004 against Southern Utah as Plaisted led all scorers with 19 points while Malaman added 17, Reichner recorded 12, Broadus posted 11 and Jimmy Balderson contributed 10.
- BYU recorded 7 blocks on the night, setting a season high and equaling last year's season high.
- The Cougars suffered through their worst shooting first half of the season against Boise State as they hit just 38.7 percent (12-31) of their shots from the floor in the first period of play.
- BYU started off cold from the floor in the first half, making only one field goal – a fade-away jumper from Trent Plaisted at the 17:17 mark – through the first 5:54 of the game until Fernando Malaman connected from three-point range.
- The Cougars benefited from solid defense during the scoring drought as they held Boise State scoreless for 2:41.
- Senior Brock Reichner came out hot in the second half, hitting back-to-back three pointers to tie the game at 46-46 and then picking up a steal and dishing out an assist to Jimmy Balderson, who went up for the layup that turned into a three-point play to give BYU its first lead of the game and cap a 10-0 Cougar run. Seconds later, after Boise State head coach Greg Graham was whistled for a technical foul, Reichner converted one-of-two from the line and then drained another three-pointer to give the Cougars a 53-48 advantage.
- BYU equaled the number of three-pointers it made in the first half less than five minutes into the second period, scoring three from downtown, all from Brock Reichner, in the first 4:14 of second-half play.
- Boise State head coach Greg Graham was called for a technical foul at the 17:02 mark of the second half, marking the third time this season an opponent coach has been whistled for a technical foul (Billy Tubbs, Lamar, received two on Nov. 30).
- The Cougars saw a 72-60 second-half lead quickly whittled down to just three points as BYU went scoreless from the field for 4:51.





**BYU MARGIN OF VICTORY/DEFEAT**

| WINS           | LOSSES |
|----------------|--------|
| 1 point        |        |
| 2 points       |        |
| 3 points       | 1      |
| 4 points       |        |
| 5 points       |        |
| 6 points       | 1      |
| 7 points       |        |
| 8 points       | 1      |
| 9 points       |        |
| 10 points      |        |
| 11 points      |        |
| 12 points      | 1      |
| 13 points      |        |
| 14 points      |        |
| 15 points      |        |
| 16-19 points   |        |
| 20-24 points   | 1 (23) |
| 25-29 points   | 1 (25) |
| 30-plus points |        |

| CURRENT BYU STREAKS ...              | 05-06 | Overall |
|--------------------------------------|-------|---------|
| Current won/loss streak              | 1 win | same    |
| At home                              | 2-0   | same    |
| On the road                          | 0-1   | same    |
| On a neutral floor                   | 1-0   | same    |
| At home vs. Nonconference            | 2-0   | same    |
| At home vs. MWC                      | 0-0   | 0-1     |
| On the road vs. Nonconference        | 0-1   | same    |
| On the road vs. MWC                  | 0-0   | 0-4     |
| On a neutral floor vs. Nonconference | 1-0   | same    |
| On a neutral floor vs. MWC           | 0-0   | 0-2     |
| at regular-season tournament         | 0-0   | 1-0     |
| at MWC Tournament                    | 0-0   | 0-2     |
| at NCAA Tournament                   | 0-0   | 0-5     |
| at NIT                               | 0-0   | 0-1     |

**BYU'S 2005-06 RECORD WHEN ...**

|  |     |
|--|-----|
| At home                                | 2-1 |
| On the road                            | 1-1 |
| On a neutral floor                     | 1-0 |
| On Television                          | 0-0 |
| On CBS                                 | 0-0 |
| On ESPN                                | 0-0 |
| On ESPN2                               | 0-0 |
| On ESPN+Plus                           | 0-0 |
| On ABC                                 | 0-0 |
| On SportsWest                          | 0-0 |
| On other local broadcast TV            | 0-0 |
| On Monday                              | 0-0 |
| On Tuesday                             | 1-0 |
| On Wednesday                           | 2-0 |
| On Thursday                            | 0-0 |
| On Friday                              | 0-1 |
| On Saturday                            | 1-1 |
| Coming off a win                       | 2-1 |
| Coming off a loss                      | 2-0 |
| Had two or more days between last game | 4-2 |
| Had only one day between last game     | 0-0 |
| Playing the next day after a game      | 0-0 |
| BYU scores 100 or more points          | 0-0 |
| BYU scores between 90-99 points        | 1-0 |
| BYU scores between 80-89 points        | 2-0 |
| BYU scores between 70-79 points        | 1-1 |
| BYU scores between 60-69 points        | 0-1 |
| BYU scores below 60 points             | 0-0 |
| Opponent scores 90 or more points      | 0-0 |
| Opponent scores between 80-89 points   | 0-1 |
| Opponent scores between 70-79 points   | 2-1 |
| Opponent scores between 60-69 points   | 2-0 |
| Opponent scores between 50-59 points   | 0-0 |
| Opponent scores below 50 points        | 0-0 |
| BYU leads at half                      | 3-0 |
| Opponent leads at half                 | 1-2 |
| Score tied at half                     | 0-0 |
| BYU leads with 5 minutes left          | 4-0 |
| Opponent leads with 5 min. left        | 0-2 |
| Score tied with 5 minutes left         | 0-0 |
| BYU leads with 1 minute left           | 4-0 |
| Opponent leads with 1 min. left        | 0-2 |
| Score tied with 1 minute left          | 0-0 |
| Game goes into overtime                | 0-0 |
| BYU shoots 50 % or better              | 3-0 |
| Opponent shoots 50 % or better         | 1-0 |
| BYU outshoots opponent                 | 3-0 |
| Opponent outshoots BYU                 | 1-2 |
| BYU outrebounds opponent               | 2-1 |
| Opponent outrebounds BYU               | 1-1 |
| BYU and opponent tie in rebounds       | 1-0 |
| vs. top-25 ranked opponent             | 0-0 |
| vs. 2005 conference champions          | 0-0 |
| vs. 2005 postseason teams              | 0-0 |

**SCORING FOR THE COUGARS**

BYU is averaging an MWC-leading 79.7 points, led by redshirt freshman Trent Plaisted's 15.8 points per game. The 6-foot-11 forward/center has reached double figures in each game. Junior Jimmy Balderson adds 12.8 points per game as the second Cougar to average double figures. Three different Cougars have led the team in scoring in BYU's first six games (Plaisted three times, 20 at USC, 13 vs. Southern Utah and 19 vs. Boise State; Balderson twice, 18 vs. Loyola Marymount and 21 vs. Lamar; and senior Brock Reichner, 18 at Wash. State).

**THREE-POINT ACCURACY AMONG NATION'S BEST**

In the first release of the NCAA national statistics this week, BYU ranks eighth in the country from behind the arc (.449) through the first five games of the season (rankings released prior to Boise State game). The Cougars were shooting over 50 percent until making a season-low 26.1 percent at USC last Saturday and are now shooting .426 from beyond the arc. Prior to the USC game, BYU was one of only nine teams shooting 50 percent or better from long range. Now only one team in the nation (Indiana) is making 50 percent or better on threes. Individually, four Cougars are making 50 percent or more of their three-point attempts and eight Cougars have made a trey this year. Four Cougars are averaging one trey a game. Senior Brock Reichner has made a team-best 10 triples this year. Ironically, BYU's lowest three-point percentage comes from last year's team leader in that category, Junior Jimmy Balderson, who made 42 percent of his treys last year; is currently 5-for-22 on threes (.227) after going 1-for-10 in the last two games.

**POINT PLAY ASSISTING IN VICTORY**

BYU's Rashaun Broadus (5.2 apg) and Austin Ainge (3.3 apg) rank first and fifth, respectively, among Mountain West Conference players in assists per game average this season while helping the Cougars lead the MWC in team apg with 17. BYU's point guards have played well in the Cougars' victories. In BYU's season-opening loss to Loyola Marymount the two guards combined for six assists and five turnovers, and in the loss at USC they totaled seven assists and five turnovers. The assists-to-turnovers ratio has been significantly better in BYU's wins. Broadus and Ainge showed marked improvement in the Cougars' win at Washington State, where the two combined to dish out 10 assists while committing only two turnovers, as each posted a line of a game-high 5 assists with only one turnover. In BYU's victory over Southern Utah, they combined for 13 assists with only one turnover, as Ainge tied a career high with 8 assists without a turnover and Broadus had 3 assists and one turnover while scoring a season-best 11 points. Against Lamar, Broadus dished out a career-best 9 assists, including an assist on BYU's first six baskets, while Ainge added two assists to help BYU record a season-high 22 assists for the second straight game. Broadus recorded a team-high six assists against Boise State.

**FRESHMEN WING PLAY**

BYU's two freshman wings are contributing. Lee Cumard is averaging 4.8 points in 13.8 minutes while shooting .476 from the floor and .556 on threes. He has made 5-of-9 treys, including a triple BYU's first five games. Jackson Emery has also provided valuable production in his minutes this season. He scored nine points in nine minutes at USC, all in the second half, to help fuel BYU's comeback attempt. He is shooting 47.1 percent from the floor; 36.4 percent from long range, and is perfect from the line while averaging 4.0 points in 9.5 minutes. He has also been a solid defender for the Cougars, often helping guard the opponent's top perimeter player.

**BYU STARTING LINEUPS**

| Opponent           | (1)     | (2)      | (3)       | (4)     | (5)      |
|--------------------|---------|----------|-----------|---------|----------|
| Loyola Marymount   | Broadus | Ainge    | Balderson | Malaman | Plaisted |
| @ Washington State | Broadus | Reichner | Balderson | Malaman | Plaisted |
| Southern Utah      | Broadus | Reichner | Balderson | Malaman | Plaisted |
| vs. Lamar          | Broadus | Reichner | Balderson | Malaman | Plaisted |
| USC                | Broadus | Reichner | Balderson | Malaman | Plaisted |
| Boise State        | Broadus | Reichner | Balderson | Malaman | Plaisted |
| Northern Kentucky  |         |          |           |         |          |
| Weber State        |         |          |           |         |          |
| @ Utah State       |         |          |           |         |          |
| Eastern Washington |         |          |           |         |          |
| Tulsa              |         |          |           |         |          |
| @ Air Force        |         |          |           |         |          |
| Utah               |         |          |           |         |          |
| @ UNLV             |         |          |           |         |          |
| Wyoming            |         |          |           |         |          |
| @ San Diego State  |         |          |           |         |          |
| TCU                |         |          |           |         |          |
| @ Colorado State   |         |          |           |         |          |
| @ New Mexico       |         |          |           |         |          |
| Air Force          |         |          |           |         |          |
| @ Utah             |         |          |           |         |          |
| UNLV               |         |          |           |         |          |
| @ Wyoming          |         |          |           |         |          |
| San Diego State    |         |          |           |         |          |
| @ TCU              |         |          |           |         |          |
| Colorado State     |         |          |           |         |          |
| New Mexico         |         |          |           |         |          |

**WON-LOSS RECORDS/STARTING LINEUP**

| RECORD | (1)     | (2)      | (3)       | (4)     | (5)      |
|--------|---------|----------|-----------|---------|----------|
| 0-1    | Broadus | Ainge    | Balderson | Malaman | Plaisted |
| 4-1    | Broadus | Reichner | Balderson | Malaman | Plaisted |



**FORMER COUGAR DANNY  
AINGE TO BE HONORED  
WITH PRESTIGIOUS  
2006 NCAA SILVER  
ANNIVERSARY AWARD**

Former BYU basketball great Danny Ainge has been selected as one of six recipients of the 2006 NCAA Silver Anniversary Award.



The award recognizes former student-athletes who completed successful collegiate careers in various sports 25 years ago and went on to excel in their chosen professions. Silver Award winners are selected by the NCAA Honors Committee, which comprises eight athletics administrators at member institutions and nationally distinguished citizens who are former student-athletes.

Joining Ainge as 2006 recipients are Valerie B. Ackerman (University of Virginia, women's basketball); Charles E. Davis (Vanderbilt University, men's basketball); Dr. Terry Schroeder (Pepperdine University, men's water polo); Michael Singletary (Baylor University, football); and Susan D. Wellington (Yale University, women's swimming and softball).

The awards will be presented at the NCAA Honors Celebration on Saturday, January 7, during the annual NCAA Convention in Indianapolis. The Convention will serve as the kick-off to the NCAA's Centennial with the theme, Celebrating the Student-Athlete.

Ainge becomes the third former BYU student-athlete to receive the prestigious award, joining current BYU Faculty Representative Larry Echohawk (Football, 1970), who was honored in 1995, and former Cougar All-American quarterback Gifford Nielsen (Football, 1978), who received the award in 2003.

A three-sport high school athlete, Ainge was drafted in the 15th round of the 1977 Major League Baseball draft by the Toronto Blue Jays. While playing collegiate basketball at BYU, Ainge spent his first three years also playing professional baseball at Toronto.

Named both the 1981 John Wooden and Eastman Award winner, Ainge averaged 24.4 points per game during his senior season. Ainge still holds several individual season and career records at BYU and is the only Cougar men's basketball player to have his jersey retired.

After graduation, Ainge was selected in the second round of the 1981 National Basketball Association (NBA) draft and spent 14 seasons playing for the Boston Celtics, Sacramento Kings, Portland Trailblazers and Phoenix Suns. A member of two world championship teams with the Celtics (1984, 1986), Ainge is only one of three retired NBA players to make 1,000 three-point shots.

Hired as an assistant coach with the Phoenix Suns, Ainge was promoted to head coach eight games into the year. Ainge served as an NBA game and studio analyst for Turner Sports before being named Executive Director of Basketball Operations for the Boston Celtics in 2003.

Ainge has worked with several community and charitable organizations including the Children's Miracle Network, Cystic Fibrosis Foundation, the Stay-In-School campaign and Special Olympics. He remains actively involved with the Church of Jesus Christ of Latter-day Saints. Ainge and wife Michelle, have six children, including current BYU guard Austin Ainge, and two grandchildren.

**COUGARS ADD ATHLETICISM DURING EARLY SIGNING PERIOD**

Three high school players — Jordan Cameron, a 6-foot-5 swingman from Newbury Park, Calif., Noah Hartsock, a 6-foot-8 power forward from Bartlesville, Okla., and Luiz de Toledo, a 6-foot-7, 220-pound forward from Araraquara, Brazil — signed national letters of intent to play basketball for the Cougars during November's early signing period. BYU increased the program's athleticism with its new additions.

**JORDAN CAMERON**

A shooting guard/small forward from Newbury Park High School, Jordan Cameron is an athletic player known for his toughness and aggressive style of play. Despite being consistently double-teamed, he averaged a team-leading 18.6 points for coach Steve Johnson's team as a junior last season while adding 6.6 rebounds, three assists and two steals per game to earn first-team All-Marmonte League, second-team All-Ventura County and first-team All-North Los Angeles Region accolades.

With 4.6 40-yard-dash speed and a 39-inch vertical leap, Cameron has earned notice with his athletic play, including being honored as one of the top 16 players at the invitation-only West Coast All-Star Camp.

Showing his athleticism and versatility, Cameron earned all-league honors in football as a junior even though he didn't start playing football until halfway through the season. He pulled in eight touchdown receptions in just five games last year and is on his way to all-league recognition this season as one of the top 15 receivers in the state. To date, he has pulled in 63 receptions, including 11 touchdown catches, for 889 yards to average 98.8 yards per game.

"Jordan is a very competitive, intense player," BYU coach Dave Rose said. "He is an explosive athlete who really knows how to use his athleticism as a scorer."

**LUIZ de TOLEDO**

An extremely athletic player with excellent size, Luiz de Toledo is a high school senior at Modesto Christian High School, a central California power that went 28-7 last year and finished second in Northern California. Modesto Christian coach Gary Porter has had players sign in recent years with schools such as Kentucky, California, Washington and Oregon State.

This is de Toledo's second year at Modesto Christian, although he had to sit out his first season after arriving from Brazil. His home in Brazil is near the border of the Western Paulista Plateau, approximately 150 miles from Sao Paulo.

BYU has signed four Brazilian players in recent years. The Cougars signed center Rafael Araujo and guard Luiz Lemes in their 2002 class and current Cougar forward Fernando Malaman committed to BYU last spring. Araujo went on to earn All-America honors and become an NBA lottery pick, while Lemes was the Cougars' assist leader on their 2004 NCAA team and is now playing professionally in Brazil. Malaman is a junior in his first year at BYU.

"Luiz is an excellent addition to our program," BYU coach Dave Rose said. "He adds great athleticism to our team. Our staff is excited that Luiz has chosen BYU."

**NOAH HARTSOCK**

Hartsock averaged 19.9 points and 9.9 rebounds to lead coach Tim Bart's Bartlesville High School team to a 25-3 record and the 6-A state championship game last season. A McDonald's High School All-America nominee, Hartsock was named the Frontier Conference Player of the Year while earning first-team all-state honors.

A highly skilled offensive player with strong post moves, Hartsock has a soft touch from midrange and a solid stroke behind the three-point arc. He has excellent quickness and strength to complement his size. An Oklahoma Tipoff magazine Fab 5 pick, Hartsock received several tournament MVP awards during the summer playing for the Oklahoma Adidas Pump and Run team.

Hartsock plans to serve a two-year mission for The Church of Jesus Christ of Latter-day Saints before enrolling at BYU. He is the brother-in-law of All-Mountain West Conference BYU women's volleyball player Lindsay Hartsock.

"Noah has great size and can really run for a big guy," BYU coach Dave Rose said. "He is a good scorer in the post, can step out and knock down shots on the perimeter and is a great free-throw shooter."

**BYU RECRUITS ROSTER INFORMATION**

|                |     |     |     |   |
|----------------|-----|-----|-----|---|
| Jordan Cameron | G/F | 6-5 | 185 | Newbury Park, Calif. / Newbury Park HS              |
| Luiz de Toledo | F   | 6-7 | 220 | Araraquara, Brazil / Modesto Christian High School, |
| Noah Hartsock  | F   | 6-8 | 200 | Bartlesville, Okla. / Bartlesville HS               |



Dave Rose was named to succeed Steve Cleveland as BYU Men's Basketball Head Coach on April 11, 2005.

Rose, who has served the past eight seasons as Cleveland's lead assistant, was promoted to BYU's head job two days after Cleveland announced his resignation to take the head-coaching position at Fresno State. A tireless worker, gifted motivator and strong strategist, Rose served as associate head coach the past five seasons and takes over the BYU program with 22 years of coaching experience, including 10 seasons as a head coach at the junior college and high school levels.

Since coming to Provo in 1997 along with Steve Cleveland, Rose has played a vital role in rebuilding BYU's program from an inherited 1-25 team into a regular NCAA Tournament participant and 20-game winner. BYU has qualified for postseason play five of the past six seasons, including three NCAA bids, while claiming two MWC titles. As associate head coach, Rose fulfilled a variety of responsibilities under coach Cleveland and his efforts earned notice, such as being named the top assistant in the Mountain West Conference by Street & Smith in the 2004-05 College Basketball Preview,

Rose was the team's defensive coordinator and worked with the post players. He possesses a complete knowledge of the game and worked hard in developing the team's defensive game plans. An outstanding teacher, he coached defensive skill development and implemented the defensive game plan. With Rose overseeing the defense, BYU has been the top defensive team in the Mountain West Conference two of the past four seasons.

A strong evaluator of talent with a vast network of coaching connections across the country, Rose has managed BYU's recruiting efforts the past eight seasons. Rose's success as a recruiter is evidenced by his being named one of the top 25 college basketball recruiters in 2004 by Rivals.com. Each year the Cougars have brought in talented newcomers to contribute to and take advantage of the BYU program. The 2004 class was rated No. 17 nationally and No. 3 in the West by Rivals.com. The 2000 recruiting class also ranked in the top-20 nationally.

Proving that Rose has excelled in recruiting and developing players, eight recruits have earned conference newcomer honors or a major conference award in their first season as a Cougar in the eight years Rose has been in Provo. Including Rafael Araujo being named the league's top newcomer by the MWC media members in 2003 (the MWC discontinued the newcomer award that year), five BYU players have been singled out as either the conference newcomer or freshman of the year. Most recently, Mike Hall was named the 2004 MWC Defensive Player of the Year. Below is the list of player honors earned the last eight seasons by Cougar recruits in their first seasons in Provo.

- Mike Hall** (2003-04 MWC Defensive Player of the Year; third-team All-MWC)
- Rafael Araujo** (2002-2003 Newcomer of the Year/MWC media poll, third-team All-MWC)
- Jared Jensen** (2001-2002 MWC Co-Freshman of the Year)
- Trent Whiting** (2000-2001 MWC Newcomer Team, second-team All-MWC)
- Terrell Lyday** (1999-2000 MWC Newcomer of the Year; All-Tournament Team)
- Mark Bigelow** (1998-99 WAC Freshman/Year, Newcomer Team, second-team All-WAC)
- Mekeli Wesley** (1997-98 WAC Newcomer Team)
- Ron Selleaze** (1997-98 WAC Newcomer of the Year; Newcomer Team, second-team All-WAC)

Rose has also worked closely with scheduling. BYU has played many of the nation's top teams over the past several years, thanks in part to relationships Rose has developed with programs across the country. His efforts have helped the Cougars receive invitations to tournaments like the 2004 EA SPORTS Maui Invitational, where BYU faced eventual NCAA Champion North Carolina.

Prior to coming to BYU, Rose was head coach at Dixie College in St. George, Utah. Rose compiled a 167-57 record in seven seasons as head coach at Dixie. Rose guided six of his seven teams to national top-20 rankings, including a ranking as high as No. 2, while earning three conference titles. His peers honored him as the 1993 Scenic West Athletic Conference Coach of the Year. While at Dixie, Rose coached three NJCAA All-Americans as well as longtime NBA player Keon Clark. At BYU he recruited and coached two future NBA Draft picks in Rafael Araujo and Travis Hansen.

Before being promoted to the head coaching position at Dixie, Rose served as a Rebel assistant coach under Ken Wagner for three seasons. Rose coached multiple sports

at Millard and Pine View high schools in Utah before joining the staff at Dixie. He was the head basketball coach at Millard for three years from 1983-86. Rose becomes the 17th person to guide the Cougar basketball program since its first season in 1903. He follows the coaching pedigree of Basketball Hall of Fame coach Stan Watts, who is BYU's all-time leader in coaching victories with a 372-254 record from 1949-1972 and also coached at Millard High School and Dixie State College before coming to BYU.

**PLAYING CAREER:**

Rose was a two-sport athlete at Dixie College before transferring to Houston, where he was a shooting guard and co-captain of the famous "Phi Slamma Jamma" team featuring Hakeem Olajuwon and Clyde Drexler. In 1983 his Houston team was ranked No. 1 nationally and finished second in the NCAA tournament. At Houston, Rose played in 1980-81, redshirted in 1981-82, and played his final year in 1982-83.

At Dixie, Rose was first team all-league in both basketball and baseball. Rose was also the Region 18 batting champion hitting .421 as a center fielder. While playing basketball for Houston's Northbrook High School, he led the District 16AAAA in scoring, was selected first team all district and All-Greater Houston, and was named team MVP.

**PERSONAL:**

A native of Houston, Texas, Rose, 47, is married to the former Cheryl Lang and they have three children and one granddaughter. Daughter Chanell played forward on the BYU women's basketball team from 2000-2003 and is married to Brock Reichner, who is a guard on the BYU team. Rose's wife Cheryl is actively involved in helping families who have children with cancer as vice chairperson of the Children with Cancer Christmas Foundation. Rose follows Cleveland as the second returned missionary to serve as BYU men's basketball head coach. Rose served a full-time mission for The Church of Jesus Christ of Latter-day Saints in Manchester, England, from 1977-79 between his two years as a player at Dixie College. His son Garrett returns in August 2005 from his two-year mission in Little Rock, Ark.

**COMMUNITY SERVICE**

Dave Rose was one of the first coaches in Utah to become involved with Coaches vs. Cancer while at Dixie State College. He helps the Children with Cancer Christmas Foundation and has been a volunteer coach for youth groups. He served on the Academic Excellence Committee at Dixie. Dave and his wife Cheryl were Chamber of Commerce Citizens of the Year in St. George. Cheryl is extremely committed to serving in the community. She received the Beacon of Hope Award in 2005. After Dave got her involved, she now serves as the Vice Chairperson for the Children with Cancer Christmas Foundation. She served on the Utah State Substance Abuse Committee of Higher Education and was on the Washington County Substance Abuse Prevention Team. She spoke across the region about substance abuse while fulfilling an appointment by the U.S. Department of Education as the Regional Coordinator for the Network of Colleges and Universities Committee to the Elimination of Drug and Alcohol Abuse on Campus, serving Utah, Arizona and Nevada. Cheryl has also served on the Women's Conference Board, including a stint as Charwomen in 1995. Other involvements have included the Washington County Fair Queen Pageant Committee and being the longtime chairwomen for the Miss Santa Clara Pageant.

**COMMENTING ON ROSE**

"Dave Rose is one of the best coaches I have ever known. He is not only the best at preparing you to succeed against your opponent by preparing game plans but also the greatest motivator I have ever been around. He has a special way to communicate with the players and instill confidence that enables you to play at the highest level every game. When my career at BYU came to an end, he continued to help me choose an agent, go to NBA camps and NBA workouts and begin my professional career. He never stopped supporting and believing in me. I will always be grateful for what he has done for me and continues to do for me now."  
 - Travis Hansen, Former BYU Cougar and Atlanta Hawk, who played in Spain last year

"I have never been around a coach who had a feel for what makes each player tick like Coach Rose. The game plans he prepared were usually right on, and if we executed them we won the game. He is a coach that you not only want to play for but also would sacrifice almost anything for. He has been one of the most influential people in my basketball career, and I will forever benefit from his lessons on basketball and life. I've never seen any other coach like him."  
 - Mark Bigelow, Former BYU Cougar, currently playing professionally in Spain

"Coach Rose is one of the main reasons why I came to BYU. He saw me play in junior college, and because of his great vision and recruiting skills, I came to BYU. I enjoyed working with Coach Rose. He taught me a lot. He's a great coach."  
 - Rafael Araujo, Former BYU Cougar and current Toronto Raptor

**ROSE DIVISION I COACHING LEDGER**

| School | Season  | Overall | MWC | MWC Tourney | NCAA/NIT |
|--------|---------|---------|-----|-------------|----------|
| BYU    | 2005-06 | 4-2     | 0-0 | 0-0         | 0-0      |



2005-06 BYU NUMERICAL ROSTER

| NO. | NAME             | POS. | HT.  | WT. | YR. | EXP. | HOMETOWN / PREVIOUS SCHOOL                             |
|-----|------------------|------|------|-----|-----|------|--|
| 1   | Rashaun Broadus  | G    | 6-0  | 195 | Jr. | TR   | Mililani, Hawaii / Western Nebraska CC                 |
| 2   | Mike Rose        | G    | 6-3  | 185 | Jr. | 2L   | Houston, Texas / Spring Woods HS                       |
| 3   | Keena Young      | F    | 6-6  | 205 | Jr. | 1L   | Beaumont, Texas / South Plains College                 |
| 4   | Jackson Emery    | G    | 6-3  | 175 | Fr. | HS   | Alpine, Utah / Lone Peak HS                            |
| 10  | Vuk Ivanovic     | F/C  | 6-10 | 250 | Jr. | TR   | Pancevo, Serbia and Montenegro / Seton Hill University |
| 11  | Brock Reichner   | G    | 6-4  | 205 | Sr. | 1L   | Provo, Utah / Salt Lake Community College              |
| 13  | Austin Ainge     | G    | 6-2  | 180 | Jr. | 2L   | Gilbert, Ariz. / Highland HS                           |
| 15  | Fernando Malaman | F    | 6-9  | 215 | Jr. | TR   | Limeira, Brazil / Arizona Western College              |
| 20  | Sam Burgess      | G    | 6-3  | 190 | Jr. | 1L   | Alpine, Utah / Snow College                            |
| 23  | Jimmy Balderson  | G    | 6-6  | 200 | Jr. | 2L   | Magrath, Alberta / Magrath HS                          |
| 30  | Lee Cummard      | G    | 6-6  | 175 | Fr. | HS   | Mesa, Ariz. / Mesa HS                                  |
| 34  | David Burgess    | C    | 6-10 | 250 | Fr. | RS   | Irvine, Calif. / Woodbridge HS                         |
| 41  | Jermaine Odjegba | F    | 6-7  | 190 | Fr. | RS   | West Palm Beach, Fla. / Palm Beach Gardens HS          |
| 43  | Derek Dawes      | C    | 6-11 | 275 | Jr. | 2L   | Salt Lake City, Utah / Cottonwood HS                   |
| 44  | Trent Plaisted   | F    | 6-11 | 245 | Fr. | RS   | San Antonio, Texas / Clark HS                          |

Head Coach: Dave Rose, 1st year (Houston, 1983)

Assistant Coaches: Dave Rice (UNLV, 1991); John Wardenburg (BYU, 1986);

Walter Roese (BYU-Hawaii, 1994)

Director of Basketball Operations: Terry Nashif (BYU, 2005)

Team Trainer: Robert Ramos (BYU, 1995)

PRONUNCIATION GUIDE

**RASHAUN BROADUS**  
bro-dus

**LEE CUMMARD**  
come-MAHRD

**VUK IVANOVIC**  
VOO-k e-VAHN-oh-vich

**FERNANDO MALAMAN**  
mah-la-MAHN

**JERMAINE ODJEGBA**  
oh-JEHG-bah

**TRENT PLAISTED**  
PLAY-sted

**BROCK REICHNER**  
RICH-ner

**KEENA YOUNG**  
KEY-nah

**TERRY NASHIF**  
NASH-if

**ROBERT RAMOS**  
RAY-mus

**WALTER ROESE**  
row-EESE

SEASON / CAREER HIGHS

| #  | PLAYER                              | POINTS  | REBOUNDS  | ASSISTS  |
|----|-------------------------------------|---|---|--|
| 1  | BROADUS, Rashaun<br><i>Career:</i>  | 11 vs. Southern Utah, Boise State<br><i>same</i>                        | 8 at USC<br><i>same</i>   | 9 vs. Lamar<br><i>same</i>   |
| 2  | ROSE, Mike<br><i>Career:</i>        | 12 vs. Loyola Marymount<br><i>26 (twice) last vs. Santa Clara 04-05</i> | 2 vs. LMU, SUU, Lamar<br><i>6 vs. San Diego St 04-05</i>                        | 2 vs. Southern Utah<br><i>6 vs. Southern Utah 03-04</i>                    |
| 3  | YOUNG, Keena<br><i>Career:</i>      | 8 at Washington State<br><i>14 (4 times) last vs. UNM 04-05</i>         | 5 vs. Southern Utah<br><i>11 vs. Air Force 04-05</i>                            | 1 vs. Loyola Marymount, at USC, vs. Boise St<br><i>4 at Weber St 04-05</i> |
| 4  | EMERY, Jackson<br><i>Career:</i>    | 10 vs. Southern Utah<br><i>same</i>                                     | 1 at USC<br><i>same</i>   | -<br><i>same</i>   |
| 11 | REICHNER, Brock<br><i>Career:</i>   | 18 at Washington State<br><i>same</i>                                   | 4 vs. Southern Utah, Boise State<br><i>5 at Air Force, vs. UNM at MWC 04-05</i> | 5 vs. Boise State<br><i>same</i>   |
| 13 | AINGE, Austin<br><i>Career:</i>     | 8 vs. Lamar<br><i>25 at Colorado St 04-05</i>                           | 4 vs. Southern Utah<br><i>7 vs. Santa Clara 04-05</i>                           | 8 vs. Southern Utah<br><i>same (also vs. NC St, MSUB, UNM 04-05)</i>       |
| 15 | MALAMAN, Fernando<br><i>Career:</i> | 17 at Boise State<br><i>same</i>  | 5 at Washington State, vs. Boise State<br><i>same</i>                           | 4 vs. Loyola Marymount<br><i>same</i>                                      |
| 23 | BALDERSON, Jimmy<br><i>Career:</i>  | 21 vs. Lamar<br><i>23 at UNLV 04-05</i>                                 | 7 vs. Loyola Marymount<br><i>same (also at UNLV, vs. Wyoming 04-05)</i>         | 3 vs. Southern Utah<br><i>4 at USC 04-05</i>                               |
| 30 | CUMMARD, Lee<br><i>Career:</i>      | 9 vs. Southern Utah, Lamar<br><i>same</i>                               | 4 vs. Southern Utah<br><i>same</i>  | 3 vs. Lamar<br><i>same</i>   |
| 34 | BURGESS, David<br><i>Career:</i>    | 2 vs. Loyola Marymount<br><i>same</i>                                   | 3 vs. Loyola Marymount<br><i>same</i>   | -<br><i>same</i>   |
| 41 | ODJEGBA, Jermaine<br><i>Career:</i> | 2 vs. Lamar<br><i>same</i>  | 2 vs. Southern Utah<br><i>same</i>  | -<br><i>same</i>   |
| 43 | DAWES, Derek<br><i>Career:</i>      | 8 vs. Lamar<br><i>14 vs. UNM 04-05</i>                                  | 2 at USC, vs. Boise State<br><i>10 (3 times) last vs. UNM 04-05</i>             | 2 vs. Southern Utah<br><i>same (also vs. Wyo. 00-01, vs. UNM 04-05)</i>    |
| 44 | PLAISTED, Trent<br><i>Career:</i>   | 20 at USC<br><i>same</i>  | 10 vs. Boise State<br><i>same</i>   | 1 at Wash. State, vs. SUU, at USC<br><i>same</i>                           |







**RASHAUN BROADUS**

6-0 • 195 • junior • guard  
Mililani, Hawaii

**LAST OUTING:** Tied his career high with 11 points against Boise State while adding 7 rebounds, 6 assists and his first blocked shot of the season.

**TRACKING BROADUS IN 2005-06:** Currently leads all MWC players at 5.2 assists per game and ranks third in assist/turnover ratio ... grabbed a career-best 8 rebounds and dished out 5 assists at USC ... dished out a career-best 9 assists, including an assist on each of BYU's first six buckets, while adding a career-high 4 rebounds with 7 points and 1 steal in 23 minutes vs. Lamar in the Delta Center in Salt Lake City ... scored a career-high 11 points with 3 rebounds and 3 treys on perfect 3-for-3 shooting from behind the arc and 4-of-6 accuracy from the floor vs. SUU ... started at Washington State, scoring 6 points in 23 minutes while dishing out five assists, tying for team-high honors ... earned the starting nod at the point in BYU's season opener vs. Loyola Marymount, scoring nine points ... after ankle

sprain, he played in the second of BYU's two exhibition games, coming off the bench.

**PLAYER SUMMARY:** A good ballhandler who can create offensively with his quickness, Rashaun Broadus should be a significant contributor to the Cougars this year as a play-caller, scoring threat and solid defender. Broadus comes to BYU from Western Nebraska Community College where he led his team with 14.6 points per game while making a team-best 57 three-point shots.

**PERSONAL:** Born in August 1984 in Seattle ... parents are William and Teresa Broadus ... has one brother, William Jr., who also plays basketball at Western Nebraska ... sports hero is Michael Jordan ... enjoys playing X-Box and football ... recruited by Houston, Colorado State, Wyoming, Montana and Portland State ... sociology major.

**RASHAUN BROADUS – 2005-06 Game-by-Game**

| Opponent            | Date     | GS | Min      | TOTAL      |           |           | 3PTS        |          |           | REBOUNDS   |          |           | PF          | FO       | A         | TO        | Blk        | Stl       | Pts      | Avg       |           |          |          |           |            |
|---------------------|----------|----|----------|------------|-----------|-----------|-------------|----------|-----------|------------|----------|-----------|-------------|----------|-----------|-----------|------------|-----------|----------|-----------|-----------|----------|----------|-----------|------------|
|                     |          |    |          | FG         | FGA       | Pct       | 3FG         | 3FGA     | Pct       | FT         | FTA      | Pct       |             |          |           |           |            |           |          |           | Off       | Def      | Tot      |           |            |
| LMU                 | 11-18-05 | *  | 30       | 4          | 13        | .308      | 1           | 3        | .333      | 0          | 0        | .000      | 0           | 1        | 1         | 1.0       | 3          | 0         | 3        | 2         | 0         | 2        | 9        | 9.0       |            |
| at Washington State | 11/22/05 | *  | 23       | 2          | 5         | .400      | 1           | 2        | .500      | 1          | 2        | .500      | 0           | 2        | 2         | 1.5       | 3          | 0         | 5        | 1         | 0         | 1        | 6        | 7.5       |            |
| SUU                 | 11-26-05 | *  | 23       | 4          | 6         | .667      | 3           | 3        | 1.000     | 0          | 1        | .000      | 0           | 3        | 3         | 2.0       | 1          | 0         | 3        | 1         | 0         | 1        | 11       | 8.7       |            |
| vs Lamar University | 11-30-05 | *  | 23       | 3          | 5         | .600      | 0           | 1        | .000      | 1          | 2        | .500      | 0           | 4        | 4         | 2.5       | 2          | 0         | 9        | 5         | 0         | 1        | 7        | 8.3       |            |
| at USC              | 12/03/05 | *  | 34       | 1          | 8         | .125      | 1           | 5        | .200      | 0          | 0        | .000      | 1           | 7        | 8         | 3.6       | 1          | 0         | 5        | 4         | 0         | 0        | 3        | 7.2       |            |
| BOISE STATE BRONCOS | 12/07/05 | *  | 31       | 4          | 9         | .444      | 0           | 1        | .000      | 3          | 7        | .429      | 0           | 7        | 7         | 4.2       | 2          | 0         | 6        | 3         | 1         | 0        | 11       | 7.8       |            |
| <b>Totals</b>       |          |    | <b>6</b> | <b>164</b> | <b>18</b> | <b>46</b> | <b>.391</b> | <b>6</b> | <b>15</b> | <b>400</b> | <b>5</b> | <b>12</b> | <b>.417</b> | <b>1</b> | <b>24</b> | <b>25</b> | <b>4.2</b> | <b>12</b> | <b>0</b> | <b>31</b> | <b>16</b> | <b>1</b> | <b>5</b> | <b>47</b> | <b>7.8</b> |

Games played: 6  
Points/game: 7.8  
FG Pct: 39.1  
3FG Pct: 40.0  
FT Pct: 41.7

Rebounds/game: 4.2  
Assists/game: 5.2  
Turnovers/game: 2.7  
Assist/turnover ratio: 1.9  
Steals/game: 0.8  
Blocks/game: 0.2

**CAREER HIGHS:**

POINTS: 11 vs. BSU, SUU (2006)  
FG MADE: 4 vs. BSU, LMU, SUU (2006)  
FG ATT: 13 vs. LMU (2006)  
FG%: 66.7 (4-6) vs. SUU (2006)  
3FG MADE: 3 vs. SUU (2006)  
3FG ATT: 5 at USC (2006)  
3FG%: 1.000 (3-3) vs. SUU (2006)  
FT MADE: 3 vs. BSU (2006)  
FT ATT: 7 vs. BSU (2006)  
FT %: .500 at WSLU, vs. Lamar (2006)  
REB: 8 at USC (2006)  
ASSISTS: 9 vs. Lamar (2006)  
BLOCKS: 1 vs. BSU (2006)  
STEALS: 2 vs. LMU (2006)  
MINUTES: 34 at USC (2006)





**MIKE ROSE**  
 6-3 • 185 • junior • guard  
 Houston, Texas

**LAST OUTING:** Played 8 minutes off the bench against Boise State, making 1-of-2 three-point attempts to record 3 points while adding 1 steal.

**TRACKING ROSE IN 2005-06:** Rose scored 3 points and grabbed 2 rebounds in nine minutes off the bench vs. Lamar in the Delta Center ... scored 5 points and grabbed 2 rebounds in 13 minutes off the bench vs. SUU ... recorded his 14th career double-figure scoring game with 12 points vs. Loyola Marymount in the season opener.

**PLAYER SUMMARY:** Rose is an excellent shooter out of Spring Woods High School in Houston, Texas who led the Mountain West Conference in three-point percentage his freshman year (2003-04) and was fourth in the MWC with 56 threes as a sophomore. He was also fourth on the team in scoring average last year with 7.7 points per game. With range well beyond the three-point arc, he utilizes a 37-inch vertical to shoot over taller defenders with a quick release and can dunk off either foot.

**PERSONAL:** Rose was born October 1984 ... parents are Gordon and Sharon ... has two brothers, Greg (22) and Jordan (17) ... ranked sixth in his class of 365 seniors ... was recruited by Houston, St. Louis, Utah State, Colorado State, Texas Christian, Texas A&M, Tennessee and Illinois ... is the nephew of BYU Head Coach Dave Rose ... married the former Angela Farrell on May 5, 2005 ... marketing management major.

**MIKE ROSE – 2005-06 Game-by-Game**

| Opponent            | Date     | GS | Min | TOTAL |     |      | 3PTS |      |      | REBOUNDS |     |       |       |     |     |     |     |    |   |    | Pts | Avg |     |      |     |
|---------------------|----------|----|-----|-------|-----|------|------|------|------|----------|-----|-------|-------|-----|-----|-----|-----|----|---|----|-----|-----|-----|------|-----|
|                     |          |    |     | FG    | FGA | Pct  | 3FG  | 3FGA | Pct  | FT       | FTA | Pct   | Off   | Def | Tot | Avg | PF  | FO | A | TO |     |     | Blk | Stl  |     |
| LMU                 | 11-18-05 |    | 21  | 4     | 9   | .444 | 2    | 4    | .500 | 2        | 2   | 1.000 | 1     | 1   | 2   | 2.0 | 2   | 0  | 0 | 1  | 0   | 0   | 12  | 12.0 |     |
| at Washington State | 11/22/05 |    | 3   | 0     | 2   | .000 | 0    | 1    | .000 | 0        | 0   | .000  | 1     | 0   | 1   | 1.5 | 0   | 0  | 0 | 1  | 0   | 0   | 6.0 | 6.0  |     |
| SUU                 | 11-26-05 |    | 13  | 1     | 2   | .500 | 1    | 2    | .500 | 2        | 2   | 1.000 | 0     | 2   | 2   | 1.7 | 0   | 0  | 2 | 1  | 0   | 0   | 5   | 5.7  |     |
| vs Lamar University | 11-30-05 |    | 9   | 1     | 3   | .333 | 1    | 2    | .500 | 0        | 0   | .000  | 0     | 2   | 2   | 1.8 | 1   | 0  | 0 | 0  | 0   | 0   | 3   | 5.0  |     |
| at USC              | 12/03/05 |    | 13  | 1     | 6   | .167 | 1    | 5    | .200 | 0        | 0   | .000  | 0     | 0   | 0   | 1.4 | 2   | 0  | 0 | 1  | 0   | 1   | 3   | 4.6  |     |
| BOISE STATE BRONCOS | 12/07/05 |    | 8   | 1     | 4   | .250 | 1    | 2    | .500 | 0        | 0   | .000  | 0     | 0   | 0   | 1.2 | 0   | 0  | 0 | 0  | 0   | 1   | 3   | 4.3  |     |
| <b>Totals</b>       |          |    | 0   | 67    | 8   | 26   | .308 | 6    | 16   | .375     | 4   | 4     | 1.000 | 2   | 5   | 7   | 1.2 | 5  | 0 | 2  | 4   | 0   | 2   | 26   | 4.3 |

Games played: 6  
 Points/game: 4.3  
 FG Pct: 30.8  
 3FG Pct: 37.5  
 FT Pct: 100.0

Rebounds/game: 1.2  
 Assists/game: 0.3  
 Turnovers/game: 0.7  
 Assist/turnover ratio: 0.5  
 Steals/game: 0.3

**CAREER HIGHS:**

POINTS: 26 vs. SUU (2004),  
 vs. Santa Clara (2005)  
 FG MADE: 9 vs. SUU (2004)  
 FG ATT: 16 vs. SUU (2004)  
 FG%: 1.000 (4-4) vs. USC (2004)  
 3FG MADE: 8 vs. SUU (2004)  
 3FG ATT: 13 vs. SUU (2004)  
 3FG%: 1.000 (3-3) vs. USC (2004)  
 FT MADE: 8 vs. Santa Clara (2005)  
 FT ATT: 11 vs. Santa Clara (2005)  
 FT %: 1.000 (4-4) at Wyoming (2005)  
 REB: 6 vs. SDSU (2005)  
 ASSISTS: 6 vs. SUU (2004)  
 BLOCKS: 1 vs. MSUBillings (2005),  
 vs. WOU (2004)  
 STEALS: 3 vs. Washington St. (2005)  
 MINUTES: 36 vs. SDSU, at CSU (2005)

**ROSE YEAR-BY-YEAR BYU STATS**

| YEAR                  | GP        | GS       | MIN        | AVG         | FG         | FGA        | PCT         | 3FG       | 3FGA       | PCT         | FT        | FTA       | PCT         | OFF       | DEF       | TOT       | AVG        | PF        | FO       | A         | AVG        | TO        | BLK      | STL       | PTS        | AVG        |
|-----------------------|-----------|----------|------------|-------------|------------|------------|-------------|-----------|------------|-------------|-----------|-----------|-------------|-----------|-----------|-----------|------------|-----------|----------|-----------|------------|-----------|----------|-----------|------------|------------|
| 2003-04               | 26        | 0        | 206        | 7.9         | 34         | 81         | .420        | 28        | 61         | .459        | 6         | 12        | .500        | 4         | 15        | 19        | 0.7        | 12        | 0        | 9         | 0.3        | 13        | 1        | 4         | 102        | 3.9        |
| 2004-05               | 30        | 7        | 580        | 19.3        | 77         | 181        | .425        | 56        | 138        | .406        | 21        | 32        | .656        | 8         | 44        | 52        | 1.7        | 39        | 0        | 31        | 1.0        | 34        | 1        | 13        | 231        | 7.7        |
| <b>TWO-YEAR TOTAL</b> | <b>56</b> | <b>7</b> | <b>786</b> | <b>14.0</b> | <b>111</b> | <b>262</b> | <b>.424</b> | <b>84</b> | <b>199</b> | <b>.422</b> | <b>27</b> | <b>44</b> | <b>.614</b> | <b>12</b> | <b>59</b> | <b>71</b> | <b>1.3</b> | <b>51</b> | <b>0</b> | <b>40</b> | <b>0.7</b> | <b>47</b> | <b>2</b> | <b>17</b> | <b>333</b> | <b>6.0</b> |





**KEENA YOUNG**  
 6-6 • 205 • junior • forward  
 Beaumont, Texas

**LAST OUTING:** Scored 4 points on 2-of-4 shooting while adding 1 rebound in just 7 minutes off the bench against Boise State.

**TRACKING YOUNG IN 2005-06:** Is second on the team in rebounding average at 4.5 boards per game ... had an active night with 6 rebounds, 3 points, 1 assist, 1 block and 1 steal off the bench at USC ... had season highs of 10 points, 8 rebounds and 3 assists in 18 minutes vs. his hometown school, Lamar University ... his 8 boards lead BYU ... led BYU with 5 rebounds while adding 4 points and a career-tying 2 steals in 15 minutes of action vs. SUU ... went 3-for-3 from the field while scoring 8 points and adding 4 rebounds in 21 minutes off the bench at Washington State ... started the two exhibition games before coming off the bench in the season opener against Loyola Marymount to contribute 3 rebounds, 1 assist and 1 blocked shot.

**PLAYER SUMMARY:** Young is a 6-foot-6 forward who led the Cougars in rebounds last season after transferring from South Plains College in Levelland, Texas. He started 15 games last year but missed the last five contests due to injury. He averaged 7.2 ppg while recording one double-double while leading the team in rebounds 10 times. He has a good mid-range game and is an effective slasher. He should contribute at both the three and four positions.

**PERSONAL:** Born April 1985 in Beaumont, Texas ... son of Cleveland and Lavella Young ... has one brother, Torri ... enjoys Playstation ... signed out of high school with the University of Memphis along with classmate Kendrick Perkins but decided to attend South Plains College after Perkins chose to enter the 2003 NBA draft ... prior to signing with BYU he had verbally committed to Texas Tech ... sociology major.

**KEENA YOUNG – 2005-06 Game-by-Game**

| Opponent            | Date     | GS | Min | TOTAL |     |       | 3-PTS |      |      | FT   |     |       | REBOUNDS |     |     |     |     | PF | FO | A | TO | Blk | Stl | Pts | Avg |
|---------------------|----------|----|-----|-------|-----|-------|-------|------|------|------|-----|-------|----------|-----|-----|-----|-----|----|----|---|----|-----|-----|-----|-----|
|                     |          |    |     | FG    | FGA | Pct   | 3FG   | 3FGA | Pct  | FT   | FTA | Pct   | Off      | Def | Tot | Avg |     |    |    |   |    |     |     |     |     |
| LMU                 | 11-18-05 |    | 9   | 0     | 1   | .000  | 0     | 0    | .000 | 0    | 0   | .000  | 0        | 3   | 3   | 3.0 | 2   | 0  | 1  | 2 | 1  | 0   | 0   | 0.0 |     |
| at Washington State | 11/22/05 |    | 21  | 3     | 3   | 1.000 | 0     | 0    | .000 | 2    | 2   | 1.000 | 1        | 3   | 4   | 3.5 | 4   | 0  | 0  | 2 | 0  | 0   | 8   | 4.0 |     |
| SUU                 | 11-26-05 |    | 15  | 2     | 3   | .667  | 0     | 1    | .000 | 0    | 0   | .000  | 0        | 5   | 5   | 4.0 | 4   | 0  | 0  | 2 | 0  | 2   | 4   | 4.0 |     |
| vs Lamar University | 11-30-05 |    | 18  | 4     | 9   | .444  | 0     | 0    | .000 | 2    | 2   | 1.000 | 4        | 4   | 8   | 5.0 | 1   | 0  | 3  | 0 | 0  | 0   | 10  | 5.5 |     |
| at USC              | 12/03/05 |    | 26  | 1     | 4   | .250  | 0     | 0    | .000 | 1    | 2   | .500  | 2        | 4   | 6   | 5.2 | 2   | 0  | 1  | 1 | 1  | 1   | 3   | 5.0 |     |
| BOISE STATE BRONCOS | 12/07/05 |    | 7   | 2     | 4   | .500  | 0     | 0    | .000 | 0    | 0   | .000  | 1        | 0   | 1   | 4.5 | 0   | 0  | 1  | 0 | 0  | 0   | 4   | 4.8 |     |
| <b>Totals</b>       |          |    | 0   | 96    | 12  | 24    | .500  | 0    | 1    | .000 | 5   | 6     | .833     | 8   | 19  | 27  | 4.5 | 13 | 0  | 6 | 7  | 2   | 3   | 29  | 4.8 |

Games played: 6  
 Points/game: 4.8  
 FG Pct: 50.0  
 3FG Pct: 0.0  
 FT Pct: 83.3  
  
 Rebounds/game: 4.5  
 Assists/game: 1.0  
 Turnovers/game: 1.2  
 Assist/turnover ratio: 0.9  
 Steals/game: 0.5  
 Blocks/game: 0.3

**CAREER HIGHS:**

**POINTS:** 14 vs. Chaminde, at Weber St, vs. Air Force, vs. UNM (2005)  
**FG MADE:** 7 vs. Chaminade, vs. Air Force (2005)  
**FG AT:** 12 at UNLV, vs. Chaminade (2005)  
**FG %:** 1.000 (3-3) at WSU (2006)  
**3FG MADE:** -  
**3FG AT:** 2 vs. North Carolina (2005)  
**3FG %:** .000 (0-2) vs. N.Carolina(2005)  
**FT MADE:** 4 at Weber; vs. Utah (2005)  
**FT AT:** 8 vs. MSUBillings (2005)  
**FT %:** 1.000 (4-4) at Weber St; (2005)  
**REB:** 11 vs. Air Force (2005)  
**ASSISTS:** 4 at Weber State (2005)  
**BLOCKS:** 2 (4 times) last at Wyoming (2005)  
**STEALS:** 2 (6 times) last vs. SUU (2006)  
**MINUTES:** 39 at UNLV (2005)

**YOUNG YEAR-BY-YEAR BYU STATS**

| YEAR    | GP | GS | MIN | AVG  | FG | FGA | PCT  | 3FG | FGA | PCT  | FT | FTA | PCT  | OFF | DEF | TOT | AVG | PF | FO | A  | AVG | TO | BLK | STL | PTS | AVG |
|---------|----|----|-----|------|----|-----|------|-----|-----|------|----|-----|------|-----|-----|-----|-----|----|----|----|-----|----|-----|-----|-----|-----|
| 2004-05 | 25 | 15 | 555 | 22.2 | 74 | 149 | .497 | 0   | 3   | .000 | 31 | 51  | .608 | 56  | 84  | 140 | 5.6 | 41 | 0  | 17 | 0.7 | 23 | 17  | 15  | 179 | 7.2 |





**JACKSON EMERY**  
 6-3 • 175 • freshman • guard  
 Alpine, Utah

**LAST OUTING:** Went scoreless in 11 minutes of play against Boise State.

**TRACKING EMERY IN 2005-06:** Helped stage BYU's comeback effort at USC, scoring 9 points in 9 minutes, all in the second half, adding 1 steal and 1 rebound ... made 3-of-6 shots, including 1-of-3 treys, and was 2-for-2 from the line ... after airmailing a trey attempt, he responded by hitting a clutch three on his next attempt with 2:14 left to cut USC's once 18-point second-half lead to two at 63-61 ... again responded in the clutch with two free throws with 1:08 left to bring the USC lead back to two at 68-66 ... had 2 points and his first rebound of the season in a season-high 16 minutes vs. Lamar in the Delta Center while helping guard the Cardinals' top scorer Alan Daniels ... scored a career-best 10 points in nine minutes, all in the second half, on 3-of-4 shooting, including 2-for-3 on treys, vs. SUU ... scored the first points of his BYU career on a three-pointer during 10 minutes off the bench at Washington State ... helped with the

assignment to guard WSU's leading scorer Josh Okognon, who scored only five points, 17 below his average entering the game ... made his college debut against Loyola Marymount in the season opener, missing a trey attempt in two minutes of action off the bench.

**PLAYER SUMMARY:** Known for his competitiveness and clutch play, Jackson Emery is a quick player and solid defender with outstanding leaping ability. A good shooter from long range, he also has the athleticism and creativity to convert inside when going to the basket. He has the ability to contribute in his first season after being named the top player in Class 4A from the state of Utah in 2005.

**PERSONAL:** Born in June 1987 in Salt Lake City, Utah ... parents are Derek and Patti Emery ... has two brothers, Nick and Alex, and one sister, Annie ... sports hero Michael Jordan ... began playing basketball with his dad as a child ... enjoys March Madness and reading Harry Potter ... recruited by Utah, Princeton, Air Force, Utah State, Weber State, Snow College, Westminster, UVSC and Dixie State College ... undecided major.

**JACKSON EMERY – 2005-06 Game-by-Game**

| Opponent            | Date     | GS | Min | TOTAL |       |      | 3PTS |       |      | REBOUNDS |       |       |     | Avg | PF  | FO  | A  | TO | Blk | Stl | Pts | Avg |     |     |
|---------------------|----------|----|-----|-------|-------|------|------|-------|------|----------|-------|-------|-----|-----|-----|-----|----|----|-----|-----|-----|-----|-----|-----|
|                     |          |    |     | FG    | FGA   | Pct  | 3FG  | FGA   | Pct  | FT       | FTA   | Pct   | Off |     |     |     |    |    |     |     |     |     | Def | Tot |
| LMU                 | 11-18-05 | 2  | 0   | 1     | .000  | 0    | 1    | .000  | 0    | 0        | .000  | 0     | 0   | 0   | 0.0 | 0   | 0  | 0  | 1   | 0   | 0   | 0.0 |     |     |
| at Washington State | 11/22/05 | 10 | 1   | 1     | 1.000 | 1    | 1    | 1.000 | 0    | 0        | .000  | 0     | 0   | 0   | 0.0 | 1   | 0  | 0  | 0   | 0   | 3   | 15  |     |     |
| SUU                 | 11-26-05 | 9  | 3   | 4     | .750  | 2    | 3    | .667  | 2    | 2        | 1.000 | 0     | 0   | 0   | 0.0 | 2   | 0  | 0  | 1   | 0   | 10  | 4.3 |     |     |
| vs Lamar University | 11-30-05 | 16 | 1   | 3     | .333  | 0    | 2    | .000  | 0    | 0        | .000  | 1     | 0   | 1   | 0.3 | 4   | 0  | 0  | 0   | 0   | 2   | 3.8 |     |     |
| at USC              | 12/03/05 | 9  | 3   | 6     | .500  | 1    | 3    | .333  | 2    | 2        | 1.000 | 1     | 0   | 1   | 0.4 | 2   | 0  | 2  | 0   | 1   | 9   | 4.8 |     |     |
| BOISE STATE BRONCOS | 12/07/05 | 11 | 0   | 2     | .000  | 0    | 1    | .000  | 0    | 0        | .000  | 0     | 0   | 0   | 0.3 | 1   | 0  | 0  | 1   | 0   | 0   | 4.0 |     |     |
| <b>Totals</b>       |          | 0  | 57  | 8     | 17    | .471 | 4    | 11    | .364 | 4        | 4     | 1.000 | 2   | 0   | 2   | 0.3 | 10 | 0  | 0   | 5   | 0   | 1   | 24  | 4.0 |

Games played: 6  
 Points/game: 4.0  
 FG Pct: .471  
 3FG Pct: .364  
 FT Pct: 100.0

Rebounds/game: 0.3  
 Turnovers/game: 0.8  
 Steals/game: 0.2

**CAREER HIGHS:**

POINTS: 10 vs. SUU (2006)  
 FG MADE: 3 vs. SUU, at USC (2006)  
 FG ATT: 6 at USC (2006)  
 FG%: .750 (3-4) vs. SUU (2006)  
 3FG MADE: 2 vs. SUU (2006)  
 3FG ATT: 3 vs. SUU, at USC (2006)  
 3FG%: .667 (2-3) vs. SUU (2006)  
 FT MADE: 2 vs. SUU, at USC (2006)  
 FT ATT: 2 vs. SUU, at USC (2006)  
 FT %: 1.000 (2-2) vs. SUU, at USC (2006)  
 REB: 1 vs. Lamar, at USC (2006)  
 ASSISTS:  
 BLOCKS:  
 STEALS: 1 at USC (2006)  
 MINUTES: 16 vs. Lamar (2006)







**BROCK REICHNER**  
 6-4 • 205 • senior • guard  
 Provo, Utah

**LAST OUTING:** Started and recorded 12 points on 3-of-4 shooting from three-point range while adding 4 rebounds and a career-best 5 assists against Boise State ... came out hot in the second half, hitting back-to-back three pointers to tie the game at 46-46 and then picking up a steal and dishing out an assist to Jimmy Balderson, who went up for the layup that turned into a three-point play to give BYU its first lead of the game and cap a 10-0 Cougar run ... seconds later, after Boise State head coach Greg Graham was whistled for a technical foul, Reichner converted one-of-two from the line and then drained another three-pointer to give the Cougars a 53-48 advantage.

**TRACKING REICHNER IN 2005-06:** Has scored double figures in three games ... started and scored 7 points with 1 rebound and a career-high 3 assists vs. Lamar in the Delta Center ... his lone trey was from behind the NBA line and part of 4-for-4 three-point shooting by the Cougars to start the game and jump out to an early lead ... made his second start, scoring 11 points with 4 rebounds in 19 minutes vs.

SUU ... made his first start of the season and scored a team- and career-high 18 points at Washington State while holding WSU's leading scorer Josh Akognon to just 5 points, 17 points below his average entering the game ... went 0-2 from the floor with 1 assist against Loyola Marymount in seven minutes.

**PLAYER SUMMARY:** A 6-foot-4 guard, Reichner contributed solid play for BYU down the stretch last season after transferring from Salt Lake Community College, where he averaged 10.5 points and was the leading free-throw shooter in the Scenic West Athletic Conference at 87 percent. Reichner adds to BYU's backcourt a solid shooter and hard-nosed defender and rebounder. He is the lone senior on the team in 2005-06.

**PERSONAL:** Reichner was born July 1981 in Rexburg, Idaho ... parents are Mark and Irene Reichner ... married to Chanell Rose, who was a member of the BYU women's basketball team (2000-2003) and is the daughter of BYU head coach Dave Rose ... has a daughter named Annie Rose ... youngest of three brothers and two sisters ... brother David played at Utah and was an assistant coach at San Jose State ... served a two-year mission for The Church of Jesus Christ of Latter-day Saints in the Portugal Lisbon South mission from October 2000 to December 2002 ... international relations major.

**BROCK REICHNER – 2005-06 Game-by-Game**

| Opponent            | Date     | GS | Min | TOTAL |     |      | 3PTS |     |      | REBOUNDS |     |       |      |     |     |     |     |    |   |    |     |     |     |     |     |
|---------------------|----------|----|-----|-------|-----|------|------|-----|------|----------|-----|-------|------|-----|-----|-----|-----|----|---|----|-----|-----|-----|-----|-----|
|                     |          |    |     | FG    | FGA | Pct  | 3FG  | FGA | Pct  | FT       | FTA | Pct   | Off  | Def | Tot | Avg | PF  | FO | A | TO | Blk | Stl | Pts | Avg |     |
| LMU                 | 11-18-05 |    | 7   | 0     | 2   | .000 | 0    | 1   | .000 | 0        | 0   | .000  | 0    | 0   | 0   | 0.0 | 1   | 0  | 1 | 1  | 0   | 0   | 0   | 0.0 |     |
| at Washington State | 11/22/05 | *  | 30  | 6     | 10  | .600 | 3    | 5   | .600 | 3        | 6   | .500  | 0    | 1   | 1   | 0.5 | 0   | 0  | 0 | 0  | 0   | 3   | 18  | 9.0 |     |
| SUU                 | 11-26-05 | *  | 19  | 4     | 8   | .500 | 3    | 4   | .750 | 0        | 0   | .000  | 1    | 3   | 4   | 1.7 | 0   | 0  | 1 | 0  | 0   | 0   | 11  | 9.7 |     |
| vs Lamar University | 11-30-05 | *  | 17  | 2     | 5   | .400 | 1    | 2   | .500 | 2        | 2   | 1.000 | 0    | 1   | 1   | 1.5 | 1   | 0  | 3 | 5  | 0   | 0   | 7   | 9.0 |     |
| at USC              | 12/03/05 | *  | 13  | 1     | 4   | .250 | 0    | 1   | .000 | 0        | 0   | .000  | 0    | 1   | 1   | 1.4 | 3   | 0  | 1 | 1  | 0   | 1   | 2   | 7.6 |     |
| BOISE STATE BRONCOS | 12/07/05 | *  | 23  | 3     | 7   | .429 | 3    | 6   | .500 | 3        | 4   | .750  | 0    | 4   | 4   | 1.8 | 3   | 0  | 5 | 2  | 0   | 1   | 12  | 8.3 |     |
| <b>Totals</b>       |          |    | 5   | 109   | 16  | 36   | .444 | 10  | 19   | .526     | 8   | 12    | .667 | 1   | 10  | 11  | 1.8 | 8  | 0 | 11 | 9   | 0   | 5   | 50  | 8.3 |

Games played: 6  
 Points/game: 8.3  
 FG Pct: 44.4  
 3FG Pct: 52.6  
 FT Pct: 66.7

Rebounds/game: 1.8  
 Assists/game: 1.8  
 Turnovers/game: 1.5  
 Assist/turnover ratio: 1.2  
 Steals/game: 0.8

**CAREER HIGHS:**

POINTS: 18 at WSU (2006)  
 FG MADE: 6 at WSU (2006)  
 FG AT: 10 at WSU (2006)  
 FG %: .600 (6-10) at WSU (2006)  
 3FG MADE: 3 vs. BSU, at WSU, vs. SUU (2006)  
 3FG AT: 6 vs. BSU (2006)  
 3FG %: .750 (3-4) vs. SUU (2005)  
 FT MADE: 3 vs. BSU, at WSU (2006)  
 FT AT: 6 at WSU (2006)  
 FT %: .750 (3-4) vs. BSU (2006)  
 REB: 5 at AFA, vsUNM at MWQ(2005)  
 ASSISTS: 5 vs. BSU (2006)  
 BLOCKS: -  
 STEALS: 3 at WSU (2006), at AFA (2005)  
 MINUTES: 32 at AFA (2005)

**REICHNER YEAR-BY-YEAR BYU STATS**

| YEAR    | GP | GS | MIN | AVG  | FG | FGA | PCT  | 3FG | FGA | PCT  | FT | FTA | PCT  | OFF | DEF | TOT | AVG | PF | FO | A | AVG | TO | BLK | STL | PTS | AVG |
|---------|----|----|-----|------|----|-----|------|-----|-----|------|----|-----|------|-----|-----|-----|-----|----|----|---|-----|----|-----|-----|-----|-----|
| 2004-05 | 12 | 2  | 143 | 11.9 | 10 | 25  | .400 | 6   | 12  | .500 | 4  | 10  | .400 | 4   | 14  | 18  | 1.5 | 14 | 1  | 8 | 0.7 | 7  | 0   | 6   | 30  | 2.5 |





**AUSTIN AINGE**  
 6-2 • 180 • junior • guard  
 Gilbert, Ariz.

**LAST OUTING:** Pulled down 1 rebound while going 0-for-2 from the floor in 9 minutes of play against Boise State.

**TRACKING AINGE IN 2005-06:** Currently leads the MWC in assist/turnover ratio and is fifth among MWC players at 3.3 assists per game ... scored a season-high 8 points, including 2 treys, with 3 rebounds and 2 assists in 13 minutes vs. Lamar in the Delta Center ... dished out a career-equaling 8 assists without a turnover in 16 minutes off the bench vs. SUU, including a perfectly timed cross-court pass to Jackson Emery at the basket for a Cougar fast-break score ... added 6 points, 4 rebounds and 2 steals while shooting 3-for-4 from the floor: ... came off the bench to share team-high honors with 5 assists while adding 2 points and 1 rebound in 17 minutes at Washington State ... his lone bucket of the game was a driving move in the paint to give BYU a 34-30 lead at the half ... made his 24th career start, but first as the shooting guard, in BYU's season opener vs. Loyola Marymount.

**PLAYER SUMMARY:** After being injured just prior to the start of his first two seasons, Ainge earned the starting point guard spot in 2004-05, finishing the year third in the MWC in assists and receiving All-MWC honorable mention honors. The top returning scorer for the Cougars, Ainge has the ability to play either guard position and is a floor leader with an excellent understanding of the game. He is the son of former BYU All-American, NBA All-Star and Phoenix Suns head coach Danny Ainge, who is currently the executive director of basketball operations for the Boston Celtics.

**PERSONAL:** Born September 1981.... parents are Danny and Michelle Ainge ... has three brothers and two sisters ... first cousin Eric is a quarterback at Tennessee ... served mission for The Church of Jesus Christ of Latter-day Saints to the Dominican Republic ... married Crystal Bluth of Gilbert, Ariz., on April 26, 2003 ... sociology major.

**AUSTIN AINGE – 2005-06 Game-by-Game**

| Opponent            | Date     | GS | Min | TOTAL |     |      | 3-PTS |      |      | FT   |     |      | REBOUNDS |     |     |     | PF  | FO | A | TO | Blk | Stl | Pts | Avg |     |
|---------------------|----------|----|-----|-------|-----|------|-------|------|------|------|-----|------|----------|-----|-----|-----|-----|----|---|----|-----|-----|-----|-----|-----|
|                     |          |    |     | FG    | FGA | Pct  | 3FG   | 3FGA | Pct  | FT   | FTA | Pct  | Off      | Def | Tot | Avg |     |    |   |    |     |     |     |     |     |
| LMU                 | 11-18-05 | *  | 21  | 1     | 2   | .500 | 0     | 0    | .000 | 2    | 3   | .667 | 0        | 3   | 3   | 3.0 | 1   | 0  | 3 | 3  | 0   | 0   | 4   | 4.0 |     |
| at Washington State | 11/22/05 |    | 17  | 1     | 2   | .500 | 0     | 0    | .000 | 0    | 1   | .000 | 0        | 1   | 1   | 2.0 | 0   | 0  | 5 | 1  | 0   | 0   | 2   | 3.0 |     |
| SUU                 | 11-26-05 |    | 16  | 3     | 4   | .750 | 0     | 0    | .000 | 0    | 0   | .000 | 0        | 4   | 4   | 2.7 | 1   | 0  | 8 | 0  | 0   | 2   | 6   | 4.0 |     |
| vs Lamar University | 11-30-05 |    | 13  | 3     | 6   | .500 | 2     | 3    | .667 | 0    | 0   | .000 | 1        | 2   | 3   | 2.8 | 0   | 0  | 2 | 2  | 0   | 0   | 8   | 5.0 |     |
| at USC              | 12/03/05 |    | 7   | 0     | 0   | .000 | 0     | 0    | .000 | 0    | 0   | .000 | 0        | 0   | 0   | 2.2 | 0   | 0  | 2 | 1  | 0   | 0   | 0   | 4.0 |     |
| BOISE STATE BRONCOS | 12/07/05 |    | 9   | 0     | 2   | .000 | 0     | 1    | .000 | 0    | 0   | .000 | 0        | 1   | 1   | 2.0 | 0   | 0  | 0 | 1  | 0   | 0   | 0   | 3.3 |     |
| <b>Totals</b>       |          |    | 1   | 83    | 8   | 16   | .500  | 2    | 4    | .500 | 2   | 4    | .500     | 1   | 11  | 12  | 2.0 | 2  | 0 | 20 | 8   | 0   | 2   | 20  | 3.3 |

Games played: 6  
 Points/game: 3.3  
 FG Pct: 50.0  
 3FG Pct: 50.0  
 FT Pct: 50.0  
 Rebounds/game: 2.0  
 Assists/game: 3.3  
 Turnovers/game: 1.3  
 Assist/turnover ratio: 2.5  
 Steals/game: 0.3

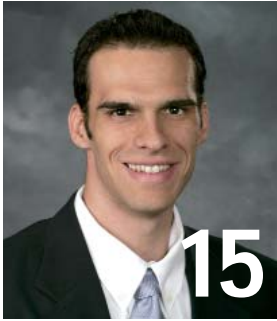
**CAREER HIGHS:**

POINTS: 25 at Colorado State (2005)  
 FG MADE: 8 at Colorado State (2005)  
 FG ATT: 14 at Colorado St (2005)  
 FG%: .667 (6-9) vs. Utah State (2005)  
 3FG MADE: 5 at CSU 2005)  
 3FG ATT: 9 at Utah State,  
 at CSU (2005)  
 3FG%: .800 (4-5) vs. SUU (2005)  
 FT MADE: 7 at UNLV (2005)  
 FT ATT: 8 vs. Utah State (2005)  
 FT %: 1.000 (4-4) vs. Santa Clara,  
 at CSU (2005)  
 REB: 7 vs. Santa Clara (2005)  
 ASSTS: 8 (4 times) last vs. SUU  
 (2006)  
 BLOCKS: 1 (twice) last at Utah (2005)  
 STEALS: 4 at Weber State,  
 vs. SDSU (2005)  
 MIN: 42 at UNLV (2005)

**AINGE YEAR-BY-YEAR BYU STATS**

| YEAR                  | GP        | GS        | MIN        | AVG         | FG         | FGA        | PCT         | 3FG       | FGA        | PCT         | FT        | FTA       | PCT         | OFF       | DEF       | TOT       | AVG        | PF        | FO       | A          | AVG        | TO         | BLK      | STL       | PTS        | AVG        |
|-----------------------|-----------|-----------|------------|-------------|------------|------------|-------------|-----------|------------|-------------|-----------|-----------|-------------|-----------|-----------|-----------|------------|-----------|----------|------------|------------|------------|----------|-----------|------------|------------|
| 2003-04               | 8         | 0         | 36         | 4.5         | 4          | 8          | .500        | 1         | 4          | .250        | 1         | 2         | .500        | 0         | 3         | 3         | 0.4        | 6         | 0        | 6          | 0.8        | 6          | 1        | 0         | 10         | 1.3        |
| 2004-05               | 30        | 23        | 831        | 27.7        | 97         | 226        | .429        | 39        | 113        | .345        | 52        | 66        | .788        | 11        | 77        | 88        | 2.9        | 54        | 1        | 124        | 4.1        | 97         | 1        | 32        | 285        | 9.5        |
| <b>TWO-YEAR TOTAL</b> | <b>38</b> | <b>23</b> | <b>867</b> | <b>22.8</b> | <b>101</b> | <b>234</b> | <b>.432</b> | <b>40</b> | <b>117</b> | <b>.342</b> | <b>53</b> | <b>68</b> | <b>.779</b> | <b>11</b> | <b>80</b> | <b>91</b> | <b>2.4</b> | <b>60</b> | <b>1</b> | <b>130</b> | <b>3.4</b> | <b>103</b> | <b>2</b> | <b>32</b> | <b>295</b> | <b>7.8</b> |





**FERNANDO MALAMAN**

6-9 • 215 • junior • forward  
Limeira, Brazil

**LAST OUTING:** Recorded career-highs of 17 points, 3 blocks and 33 minutes while going 7-for-10 from the field against Boise State and tying his career best with five rebounds.

**TRACKING MALAMAN IN 2005-06:** Shooting .647 on the year, second in the Mountain West Conference, and .727 (8-for-11) on treys ... scored 7 points in a season-low 17 minutes at USC with 4 rebounds, 1 block and 1 steal ... took only two shots, making his lone three attempt with 1:41 left to cut USC's once 18-point second-half lead to 1 point at 65-64 ... took his first free thows of the year and went a perfect 4-for-4, including two pressure makes with 23 seconds left to bring BYU back to within two points at 70-68 ... scored 4 points on 2-for-3 shooting with 2 steals and 1 rebound in 23 minutes vs. Lamar in the Delta Center ... did not attempt a trey for the first time this year. ... scored 9 points on 4-for-5 shooting with 4 rebounds and 1 steal in 27 minutes vs. SUU ... started and went 6-for-8 from the field

while scoring a career-high 14 points and adding a team-high 5 rebounds at Washington State ... against Loyola Marymount, assisted a Trent Plaisted dunk with a quick interior pass on a break and fed Mike Rose on a backdoor cut for an easy layin for 2 of his 4 team-leading assists ... came off the bench in BYU's two exhibitions before earning the start in BYU's first regular-season game.

**PLAYER SUMMARY:** A power forward with shooting range on the perimeter, Fernando Malaman is a good athlete who runs the floor well and should fit well into BYU's up-tempo offense. He is a junior transfer from Arizona Western College, where he was named a second-team NJCAA Region I and Arizona Community College Athletic Conference pick while helping the Matadors win the ACCAC and Region I titles and earn the No. 1 ranking in the final regular-season poll. Malaman is the third junior college transfer from Brazil to sign with the Cougars in recent years. Former Cougar All-American center Rafael Araujo also signed with BYU out of Arizona Western. Guard Luiz Lemes also played for the Cougars from 2002-04 after a two-year stint at Eastern Oklahoma State College.

**PERSONAL:** Born in April 1982 in Limeira, Brazil ... parents are Hipolito and Eliana Scherrer Malaman ... has one brother, Felipe, and one sister, Carolina ... sports hero is late Formula One driver Ayrton Senna ... began playing basketball at 11 years old ... enjoys chatting online with friends and family ... recruited by South Florida, San Diego and Southern Mississippi ... exercise science major.

**FERNANDO MALAMAN – 2005-06 Game-by-Game**

| Opponent            | Date     | GS | Min | TOTAL |     |      | 3PTS |     |       | REBOUNDS |     |       | PF   | FO | A  | TO  | Blk | Stl | Pts | Avg |     |     |     |      |     |
|---------------------|----------|----|-----|-------|-----|------|------|-----|-------|----------|-----|-------|------|----|----|-----|-----|-----|-----|-----|-----|-----|-----|------|-----|
|                     |          |    |     | FG    | FGA | Pct  | 3FG  | FGA | Pct   | FT       | FTA | Pct   |      |    |    |     |     |     |     |     | Off | Def | Tot |      |     |
| LMU                 | 11-18-05 | *  | 30  | 2     | 6   | .333 | 2    | 3   | .667  | 0        | 0   | .000  | 0    | 4  | 4  | 4.0 | 3   | 0   | 4   | 1   | 1   | 1   | 6   | 6.0  |     |
| at Washington State | 11/22/05 | *  | 31  | 6     | 8   | .750 | 2    | 3   | .667  | 0        | 0   | .000  | 0    | 5  | 5  | 4.5 | 4   | 0   | 1   | 1   | 0   | 3   | 14  | 10.0 |     |
| SUU                 | 11-26-05 | *  | 27  | 4     | 5   | .800 | 1    | 1   | 1.000 | 0        | 0   | .000  | 2    | 2  | 4  | 4.3 | 2   | 0   | 0   | 2   | 0   | 1   | 9   | 9.7  |     |
| vs Lamar University | 11-30-05 | *  | 23  | 2     | 3   | .667 | 0    | 0   | .000  | 0        | 0   | .000  | 0    | 1  | 1  | 3.5 | 2   | 0   | 0   | 2   | 0   | 2   | 4   | 8.3  |     |
| at USC              | 12/03/05 | *  | 17  | 1     | 2   | .500 | 1    | 1   | 1.000 | 4        | 4   | 1.000 | 0    | 4  | 4  | 3.6 | 2   | 0   | 0   | 1   | 1   | 1   | 7   | 8.0  |     |
| BOISE STATE BRONCOS | 12/07/05 | *  | 33  | 7     | 10  | .700 | 2    | 3   | .667  | 1        | 2   | .500  | 2    | 3  | 5  | 3.8 | 1   | 0   | 1   | 0   | 3   | 0   | 17  | 9.5  |     |
| <b>Totals</b>       |          |    | 6   | 161   | 22  | 34   | .647 | 8   | 11    | .727     | 5   | 6     | .833 | 4  | 19 | 23  | 3.8 | 14  | 0   | 6   | 7   | 5   | 8   | 57   | 9.5 |

Games played: 6  
Points/game: 9.5  
FG Pct: 64.7  
3FG Pct: 72.7  
FT Pct: 83.3  
  
Rebounds/game: 3.8  
Assists/game: 1.0  
Turnovers/game: 1.2  
Assist/turnover ratio: 0.9  
Steals/game: 1.3  
Blocks/game: 0.8

**CAREER HIGHS:**

POINTS: 17 vs. BSU (2006)  
FG MADE: 7 vs. BSU (2006)  
FG AT: 10 vs. BSU (2006)  
FG%: .750 (6-8) at WSU (2006)  
3FG MADE: 2 vs. BSU, at WSU, vs. LMU (2006)  
3FG AT: 3 vs. BSU, at WSU, vs. LMU (2006)  
3FG%: .667 (2-3) vs. BSU, at WSU, vs. LMU (2006)  
FT MADE: 4 at USC (2006)  
FT AT: 4 at USC (2006)  
FT %: 1.000 (4-4) at USC (2006)  
REB: 5 vs. BSU, at WSU (2006)  
ASSISTS: 4 vs. LMU (2006)  
BLOCKS: 3 vs. BSU (2006)  
STEALS: 3 at WSU (2006)  
MINUTES: 33 vs. BSU (2006)





**JIMMY BALDERSON**

6-6 • 200 • junior • guard  
Magrath, Alberta, Canada

**LAST OUTING:** Scored 10 points while adding 4 assists, 3 rebounds and 1 steal in 29 minutes against Boise State.

**TRACKING BALDERSON IN 2005-06:** Has had five double-digit scoring nights this year and 14 for his career ... scored 13 points with 6 rebounds and 1 assist at USC in a season-high 32 minutes ... scored a BYU season-high 21 points in 22 minutes vs. Lamar on 7-of-10 shooting from the floor, including 2-for-3 treys, and a career-best 5-for-5 night from the line ... added 2 rebounds, 1 assist and 1 steal ... one of his threes was from NBA distance during an early run to help BYU take control. ... dished out a season-high 3 assists while adding 3 points, 2 rebounds and 1 steal in 20 minutes vs. SUU ... scored 12 points while adding 4 rebounds at Washington State ... led BYU with 18 points and career-tying 7 rebounds in 23 minutes vs. Loyola Marymount, adding 2 assists and 1 blocked shot ... scored seven straight Cougar points during a second half run to cut LMU's lead to three points ... it was the fifth time he has led the team in scoring and the second time he has led the Cougars in rebounds during his career.

**PLAYER SUMMARY:** Balderson is a 6-foot-6 guard who led the Cougars in three-point percentage last season, making 16 starts after coming out of a planned redshirt year. A talented scorer, he has excellent range from the three-point arc and has good size. He led the Canadian National Development Team in scoring at the World University Games in Izmir, Turkey, in August. During the eight-game tournament, Balderson averaged 14.9 points and 4.1 rebounds while shooting 50 percent from the floor and 40 percent from three-point range. Balderson played in 27 of 30 games as a freshman reserve on BYU's 18-12 team that advanced to the second round of the 2002 NIT, logging 8.5 minutes per game while shooting .487 from the floor, .306 (11-of-36) on threes and .657 from the line. His 48.7 percent shooting from the floor led all BYU perimeter players.

**PERSONAL:** Born August 1983 in Magrath, Alberta, Canada ... parents are Wes and Lorraine Balderson ... one of seven children, three boys ... oldest brother was Canadian Interuniversity Player of the Year in Canada as shooting guard, while other brother currently plays football at the University of Alberta ... served a two-year mission for The Church of Jesus Christ of Latter-day Saints in the Marshall Islands speaking Marshallese ... married the former Hannah Skidmore on Sept. 8, 2005 ... economics major.

**JIMMY BALDERSON – 2005-06 Game-by-Game**

| Opponent            | Date     | GS | Min | TOTAL |     |      | 3PTS |     |      | REBOUNDS |     |       |      |     |     |     |     |    |   |    | Pts | Avg |     |      |      |
|---------------------|----------|----|-----|-------|-----|------|------|-----|------|----------|-----|-------|------|-----|-----|-----|-----|----|---|----|-----|-----|-----|------|------|
|                     |          |    |     | FG    | FGA | Pct  | 3FG  | FGA | Pct  | FT       | FTA | Pct   | Off  | Def | Tot | Avg | PF  | FO | A | TO |     |     | Blk | Stl  |      |
| LMU                 | 11-18-05 | *  | 23  | 6     | 13  | .462 | 1    | 4   | .250 | 5        | 6   | .833  | 2    | 5   | 7   | 7.0 | 5   | 1  | 2 | 3  | 1   | 0   | 18  | 18.0 |      |
| at Washington State | 11/22/05 | *  | 28  | 4     | 9   | .444 | 1    | 4   | .250 | 3        | 4   | .750  | 1    | 3   | 4   | 5.5 | 3   | 0  | 1 | 2  | 0   | 1   | 12  | 15.0 |      |
| SUU                 | 11-26-05 | *  | 20  | 1     | 2   | .500 | 0    | 1   | .000 | 1        | 2   | .500  | 0    | 2   | 2   | 4.3 | 2   | 0  | 3 | 2  | 0   | 1   | 3   | 11.0 |      |
| vs Lamar University | 11-30-05 | *  | 22  | 7     | 10  | .700 | 2    | 3   | .667 | 5        | 5   | 1.000 | 1    | 1   | 2   | 3.8 | 1   | 0  | 1 | 1  | 0   | 1   | 21  | 13.5 |      |
| at USC              | 12/03/05 | *  | 32  | 4     | 12  | .333 | 1    | 6   | .167 | 4        | 6   | .667  | 2    | 4   | 6   | 4.2 | 4   | 0  | 1 | 2  | 0   | 0   | 13  | 13.4 |      |
| BOISE STATE BRONCOS | 12/07/05 | *  | 29  | 4     | 11  | .364 | 0    | 4   | .000 | 2        | 4   | .500  | 1    | 2   | 3   | 4.0 | 3   | 0  | 4 | 3  | 0   | 1   | 10  | 12.8 |      |
| <b>Totals</b>       |          |    | 6   | 154   | 26  | 57   | 4.56 | 5   | 22   | 2.27     | 20  | 27    | .741 | 7   | 17  | 24  | 4.0 | 18 | 1 | 12 | 13  | 1   | 4   | 77   | 12.8 |

Games played: 6  
Points/game: 12.8  
FG Pct: 45.6  
3FG Pct: 22.7  
FT Pct: 74.1  
  
Rebounds/game: 4.0  
Assists/game: 2.0  
Turnovers/game: 2.2  
Assist/turnover ratio: 0.9  
Steals/game: 0.7  
Blocks/game: 0.2

**CAREER HIGHS:**

POINTS: 23 at UNLV (2005)  
FG MADE: 8 vs. Fort Lewis (2002)  
FG ATT: 15 at UNLV (2005)  
FG%: .700 (7-10) vs. Lamar (2006)  
3FG MADE: 5 at UNLV, at USC (2005)  
3FG ATT: 9 at UNLV (2005)  
3FG%: .750 (3-4) vs. Utah (2005)  
FT MADE: 5 at USC (2005),  
vs. LMU (2006)  
FT ATT: 7 at USC (2005)  
FT %: 1.000 (5-5) vs. Lamar (2006)  
REB: 7 vs. LMU (2006), vs. Wyoming,  
at UNLV (2005), vs. Fort Lewis (2002)  
ASSTS: 4 vs. BSU (2006), at USC  
(2005)  
BLOCKS: 2 vs. UNM at MWC (2005)  
STEALS: 3 vs. Wyoming (2005),  
vs. Fort Lewis (2002)  
MIN: 37 at UNLV (2005)

**BALDERSON YEAR-BY-YEAR BYU STATS**

| YEAR                  | GP        | GS        | MIN        | AVG         | FG        | FGA        | PCT         | 3FG       | FGA        | PCT         | FT        | FTA       | PCT         | OFF       | DEF       | TOT       | AVG        | PF        | FO       | A         | AVG        | TO        | BLK      | STL       | PTS        | AVG        |
|-----------------------|-----------|-----------|------------|-------------|-----------|------------|-------------|-----------|------------|-------------|-----------|-----------|-------------|-----------|-----------|-----------|------------|-----------|----------|-----------|------------|-----------|----------|-----------|------------|------------|
| 2001-02               | 27        | 0         | 229        | 8.5         | 37        | 76         | .487        | 11        | 36         | .306        | 23        | 35        | .657        | 11        | 30        | 41        | 1.5        | 21        | 1        | 12        | 0.4        | 15        | 1        | 9         | 108        | 4.0        |
| 2004-05               | 25        | 16        | 458        | 18.3        | 54        | 136        | .397        | 34        | 81         | .420        | 26        | 42        | .619        | 10        | 47        | 57        | 2.3        | 42        | 3        | 19        | 0.8        | 37        | 2        | 10        | 168        | 6.7        |
| <b>TWO-YEAR TOTAL</b> | <b>52</b> | <b>16</b> | <b>687</b> | <b>13.2</b> | <b>91</b> | <b>212</b> | <b>.429</b> | <b>45</b> | <b>117</b> | <b>.385</b> | <b>49</b> | <b>77</b> | <b>.636</b> | <b>21</b> | <b>77</b> | <b>98</b> | <b>1.9</b> | <b>63</b> | <b>4</b> | <b>31</b> | <b>0.6</b> | <b>52</b> | <b>3</b> | <b>19</b> | <b>276</b> | <b>5.3</b> |







**LEE CUMMARD**  
 6-6 • 175 • freshman • guard  
 Mesa, Ariz.

**LAST OUTING:** Went scoreless from the field for the first time this season in 9 minutes of play against Boise State while adding 1 assist.

**TRACKING CUMMARD IN 2005-06:** Scored 5 points on 2-of-4 shooting with 2 rebounds and 1 assist in 11 minutes off the bench at USC ... tied his career-best 9 points on 3-of-4 shooting, while adding 3 rebounds vs. Lamar in the Delta Center ... also contributed a career-high 3 assists and his first steal of the season vs. Lamar ... recorded career highs of 9 points and 4 rebounds with 2 assists and 19 minutes vs. SUU ... Brought the Cougar crowd to their feet when he blocked and brought down an SUU layin attempt in one motion and then started the BYU fast break the other way ... made his college debut, logging 16 minutes off the bench with 3 points vs. Loyola Marymount, hitting a trey on 1-for-2 shooting ... was BYU's second-leading scorer in exhibition play, starting both games and averaging 15.5 points ... scored a team-best 23 points against Victoria.

**PLAYER SUMMARY:** A member of BYU's 2004 top-20 recruiting class, Cumnard is a good athlete with a natural feel for the game who could contribute significantly for the Cougars in his first season. Because of his all-around abilities, some experts rated Cumnard as the top shooting guard prospect in the West in 2004. Known as a fierce competitor, Cumnard has good ball-handling skills, excellent shooting range and the toughness to rebound and finish in traffic. He delayed his enrollment until this season because of an LDS Church mission.

**PERSONAL:** Born in March 1985 in Mesa, Ariz. ... parents are David and Cheryl Cumnard ... has five brothers, David, Jon, Stephen, Parker and Lance ... married the former Sarah Mabry on August 17, 2005 in Mesa, Ariz. ... sports hero is Michael Jordan ... served as a missionary in Nashville, Tenn., in 2004 ... recruited by Arizona State, UCLA, Oregon, Oregon State, Stanford, Iowa State, Utah State, Utah, New Mexico, Miami, Gonzaga, Oklahoma State, San Diego State and Texas Tech ... undecided major.

**LEE CUMMARD – 2005-06 Game-by-Game**

| Opponent            | Date     | GS | Min | TOTAL |     |      | 3-PTS |     |       | REBOUNDS |     |       | Avg  | PF | FO  | A   | TO  | Blk | Stl | Pts | Avg |     |     |     |     |
|---------------------|----------|----|-----|-------|-----|------|-------|-----|-------|----------|-----|-------|------|----|-----|-----|-----|-----|-----|-----|-----|-----|-----|-----|-----|
|                     |          |    |     | FG    | FGA | Pct  | 3FG   | FGA | Pct   | FT       | FTA | Pct   |      |    |     |     |     |     |     |     |     | Off | Def | Tot |     |
| LMU                 | 11-18-05 |    | 16  | 1     | 2   | .500 | 1     | 1   | 1.000 | 0        | 0   | .000  | 0    | 0  | 0.0 | 1   | 0   | 0   | 1   | 1   | 0   | 3   | 3.0 |     |     |
| at Washington State | 11/22/05 |    | 10  | 1     | 2   | .500 | 1     | 2   | .500  | 0        | 0   | .000  | 0    | 1  | 1   | 0.5 | 1   | 0   | 1   | 1   | 0   | 3   | 3.0 |     |     |
| SUU                 | 11-26-05 |    | 19  | 3     | 6   | .500 | 1     | 2   | .500  | 2        | 4   | .500  | 2    | 2  | 4   | 1.7 | 2   | 0   | 2   | 0   | 1   | 9   | 5.0 |     |     |
| vs Lamar University | 11-30-05 |    | 18  | 3     | 4   | .750 | 1     | 1   | 1.000 | 2        | 2   | 1.000 | 0    | 3  | 3   | 2.0 | 2   | 0   | 3   | 1   | 0   | 1   | 9   | 6.0 |     |
| at USC              | 12/03/05 |    | 11  | 2     | 4   | .500 | 1     | 2   | .500  | 0        | 1   | .000  | 1    | 1  | 2   | 2.0 | 4   | 0   | 1   | 1   | 0   | 5   | 5.8 |     |     |
| BOISE STATE BRONCOS | 12/07/05 |    | 9   | 0     | 3   | .000 | 0     | 1   | .000  | 0        | 0   | .000  | 0    | 0  | 1.7 | 0   | 0   | 1   | 0   | 0   | 0   | 0   | 4.8 |     |     |
| <b>Totals</b>       |          |    | 0   | 83    | 10  | 21   | .476  | 5   | 9     | .556     | 4   | 7     | .571 | 3  | 7   | 10  | 1.7 | 10  | 0   | 8   | 4   | 2   | 1   | 29  | 4.8 |

Games played: 6  
 Points/game: 4.8  
 FG Pct: 47.6  
 3FG Pct: 55.6  
 FT Pct: 57.1  
  
 Rebounds/game: 1.7  
 Assists/game: 1.3  
 Turnovers/game: 0.7  
 Assist/turnover ratio: 2.0  
 Steals/game: 0.2  
 Blocks/game: 0.3

**CAREER HIGHS:**

POINTS: 9 vs. SUU, Lamar (2006)  
 FG MADE: 3 vs. SUU, Lamar (2006)  
 FG ATT: 6 vs. SUU (2006)  
 FG%: .750 (3-4) vs. Lamar (2006)  
 3FG MADE: 1 (5 times) last at USC (2006)  
 3FG ATT: 2 (3 times) last at USC (2006)  
 3FG%: 1.000 (1-1) vs. LMU, Lamar (2006)  
 FT MADE: 2 vs. SUU, Lamar (2006)  
 FT ATT: 4 vs. SUU (2006)  
 FT %: 1.000 (2-2) vs. Lamar (2006)  
 REB: 4 vs. SUU (2006)  
 ASSISTS: 3 vs. Lamar (2006)  
 BLOCKS: 1 vs. LMU, SUU (2006)  
 STEALS: 1 vs. Lamar (2006)  
 MINUTES: 19 vs. SUU (2006)





**DAVID BURGESS**  
 6-10 • 250 • freshman • center  
 Irvine, Calif.

**LAST OUTING:** Did not play by coach's decision against Boise State.

**TRACKING BURGESS IN 2005-06:** Played two minutes with 2 rebounds vs. Lamar in the Delta Center ... played two minutes, going 0-for-2 from the floor vs. SUU ... did not play at Washington State due to illness ... went 1-for-3 from the floor in 11 minutes off the bench vs. Loyola Marymount in the season opener, grabbing 3 rebounds and recording 1 blocked shot.

**PLAYER SUMMARY:** David Burgess is a 6-foot-10, 250-pound center who was considered one of the best big men in the country coming out of high school. He is a strong low-post player and aggressive rebounder. He was granted a medical redshirt last season after appearing in only two games before being sidelined by injury. After his junior year in high school, he was the only high school player to compete on the

19-Under USA Basketball World Championships Team that finished 7-1, losing only to eventual champion Australia, and won the 2003 Global Games in Dallas with a 5-0 record. He was selected to the 18-Under USA Albert Schweitzer Team after his senior season for a tournament held in Germany. Burgess averaged 19 points, 13 rebounds, four blocked shots and three assists as a senior at Woodbridge High School in Irvine, Calif., to earn All-California First Team honors. He was a McDonald's All-America nominee.

**PERSONAL:** Born in February 1986 ... native of Irvine, Calif. ... parents are Kenneth and Sandi Burgess ... has three brothers and one sister ... his first cousin Sam Burgess also plays on the team ... his older brother Chris played Division I basketball at Duke two years and Utah two years before playing professionally overseas ... older brother Joshua was his teammate on BYU's 2004-05 team and sister Angela played on BYU's women's basketball team from 1998-99 ... among the many schools that recruited Burgess were UCLA, Louisville, Gonzaga, Florida, Oregon, Oregon State, Utah and San Diego State ... open major:

**DAVID BURGESS – 2005-06 Game-by-Game**

| Opponent            | Date     | GS                     | Min | TOTAL |      |      | 3-PTS |      |      | FT | FTA  | Pct  | REBOUNDS |     |     | PF  | FO | A | TO | Blk | Stl | Pts | Avg |     |
|---------------------|----------|------------------------|-----|-------|------|------|-------|------|------|----|------|------|----------|-----|-----|-----|----|---|----|-----|-----|-----|-----|-----|
|                     |          |                        |     | FG    | FGA  | Pct  | 3FG   | FGA  | Pct  |    |      |      | Off      | Def | Tot |     |    |   |    |     |     |     |     |     |
| LMU                 | 11-18-05 | 11                     | 1   | 3     | .333 | 0    | 0     | .000 | 0    | 0  | .000 | 1    | 2        | 3   | 3.0 | 1   | 0  | 0 | 1  | 1   | 0   | 2   | 2.0 |     |
| at Washington State | 11-22-05 | DNP - Illness          |     |       |      |      |       |      |      |    |      |      |          |     |     |     |    |   |    |     |     |     |     |     |
| SUU                 | 11-26-05 | 2                      | 0   | 2     | .000 | 0    | 0     | .000 | 0    | 0  | .000 | 0    | 0        | 0   | 1.5 | 1   | 0  | 0 | 0  | 0   | 0   | 0   | 1.0 |     |
| vs Lamar University | 11-30-05 | 2                      | 0   | 1     | .000 | 0    | 0     | .000 | 0    | 0  | .000 | 1    | 1        | 2   | 1.7 | 0   | 0  | 0 | 0  | 0   | 0   | 0   | 0.7 |     |
| at USC              | 12/03/05 | DNP - Coach's decision |     |       |      |      |       |      |      |    |      |      |          |     |     |     |    |   |    |     |     |     |     |     |
| BOISE STATE BRONCOS | 12/7/05  | DNP - Coach's decision |     |       |      |      |       |      |      |    |      |      |          |     |     |     |    |   |    |     |     |     |     |     |
| <b>Totals</b>       |          | 0                      | 15  | 1     | 6    | .167 | 0     | 0    | .000 | 0  | 0    | .000 | 2        | 3   | 5   | 1.7 | 2  | 0 | 0  | 1   | 1   | 0   | 2   | 0.7 |

Games played: 3  
 Points/game: 0.7  
 FG Pct: 16.7

Rebounds/game: 1.7  
 Turnovers/game: 0.3  
 Blocks/game: 0.3

**CAREER HIGHS:**

POINTS: 2 vs. LMU (2006)  
 FG MADE: 1 vs. LMU (2006)  
 FG AT: 3 vs. LMU (2006)  
 FG%: .333 (1-3) vs. LMU (2006)  
 3FG MADE:  
 3FG AT:  
 3FG%:  
 FT MADE:  
 FT AT:  
 FT%:  
 REB: 3 vs. LMU (2006)  
 ASSISTS:  
 BLOCKS: 1 vs. LMU (2006)  
 STEALS: 1 vs N. Carolina (2005)  
 MINUTES: 11 vs. LMU (2006)

**BURGESS YEAR-BY-YEAR BYU STATS**

| YEAR     | GP | GS | MIN | AVG | FG | FGA | PCT  | 3FG | FGA | PCT  | FT | FTA | PCT  | OFF | DEF | TOT | AVG | PF | FO | A | AVG | TO | BLK | STL | PTS | AVG |
|----------|----|----|-----|-----|----|-----|------|-----|-----|------|----|-----|------|-----|-----|-----|-----|----|----|---|-----|----|-----|-----|-----|-----|
| *2004-05 | 2  | 0  | 7   | 3.5 | 0  | 1   | .000 | 0   | 0   | .000 | 0  | 0   | .000 | 0   | 0   | 0   | 0.0 | 2  | 0  | 0 | 0.0 | 0  | 0   | 1   | 0   | 0.0 |

\*recieved medical redshirt





**JERMAINE ODJEGBA**  
 6-7 • 190 • freshman • forward  
 West Palm Beach, Fla.

**LAST OUTING:** Did not play by coach's decision against Boise State.

**TRACKING ODJEGBA IN 2005-06:** Scored his first points as a Cougar with two free throws in his 2 minutes vs. Lamar in the Delta Center. ... saw his first action as a Cougar with 2 rebounds in 4 minutes vs. SUU ... did not play in BYU's first two games.

**PLAYER SUMMARY:** Odjegba is a 6-foot-7, 190-pound small forward who joins the Cougars this season after serving a two-year LDS Church mission. He returned in June from his mission in Nashville, Tenn. Before his mission, he was a redshirt on BYU's 2002-03 MWC Co-Championship and NCAA Tournament team. An athletic player, Odjegba looks to return to his playing condition while giving the Cougars another option on the court.

**PERSONAL:** Born in November 1983 in West Palm Beach, Florida ... parents are Jonathan and Gorotti Odjegba ... has one sister, Joy ... served a two-year mission for The Church of Jesus Christ of Latter-day Saints in Nashville, Tenn. ... sports hero is Michael Jordan because of his hard work and dedication to the game of basketball ... enjoys snowmobiling and March Madness ... recruited by Florida Southern, Tampa University and Stony Brook University ... marketing major.

**JERMAINE ODJEGBA – 2005-06 Game-by-Game**

| Opponent            | Date     | GS | Min | TOTAL |     | Pct  | 3-PTS |     | Pct  | FT   | FTA | Pct   | REBOUNDS |     |     |     | PF  | FO | A | TO | Blk | Stl | Pts | Avg |     |
|---------------------|----------|----|-----|-------|-----|------|-------|-----|------|------|-----|-------|----------|-----|-----|-----|-----|----|---|----|-----|-----|-----|-----|-----|
|                     |          |    |     | FG    | FGA |      | 3FG   | FGA |      |      |     |       | Off      | Def | Tot | Avg |     |    |   |    |     |     |     |     |     |
| LMU                 | 11-18-05 |    |     |       |     |      |       |     |      |      |     |       |          |     |     |     |     |    |   |    |     |     |     |     |     |
| at Washington State | 11-22-05 |    |     |       |     |      |       |     |      |      |     |       |          |     |     |     |     |    |   |    |     |     |     |     |     |
| SUU                 | 11-26-05 |    | 4   | 0     | 0   | .000 | 0     | 0   | .000 | 0    | 0   | .000  | 0        | 2   | 2   | 2.0 | 2   | 0  | 0 | 1  | 0   | 0   | 0   | 0   | 0.0 |
| vs Lamar University | 11-30-05 |    | 2   | 0     | 0   | .000 | 0     | 0   | .000 | 2    | 2   | 1.000 | 0        | 0   | 0   | 1.0 | 0   | 0  | 0 | 1  | 0   | 0   | 2   | 1.0 |     |
| at USC              | 12/03/05 |    |     |       |     |      |       |     |      |      |     |       |          |     |     |     |     |    |   |    |     |     |     |     |     |
| BOISE STATE BRONCOS | 12/7/05  |    |     |       |     |      |       |     |      |      |     |       |          |     |     |     |     |    |   |    |     |     |     |     |     |
| Totals              |          |    | 0   | 6     | 0   | 0    | .000  | 0   | 0    | .000 | 2   | 2     | 1.000    | 0   | 2   | 2   | 1.0 | 2  | 0 | 0  | 2   | 0   | 0   | 2   | 1.0 |

Games played: 2  
 Points/game: 1.0  
 FT Pct: 100.0

Rebounds/game: 1.0  
 Turnovers/game: 1.0

**CAREER HIGHS:**

POINTS: 2 vs. Lamar (2006)  
 FG MADE:  
 FG ATT:  
 FG%:  
 3FG MADE:  
 3FG ATT:  
 3FG%:  
 FT MADE: 2 vs. Lamar (2006)  
 FT ATT: 2 vs. Lamar (2006)  
 FT %: 1.000 (2-2) vs. Lamar (2006)  
 REB: 2 vs. SUU (2006)  
 ASSISTS:  
 BLOCKS:  
 STEALS:  
 MINUTES: 4 vs. SUU (2006)

**ODJEGBA YEAR-BY-YEAR BYU STATS**

| YEAR    | GP | GS | MIN | AVG | FG | FGA | PCT | 3FG | FGA | PCT | FT | FTA | PCT | OFF | DEF | TOT | AVG | PF | FO | A | AVG | TO | BLK | STL | PTS | AVG |
|---------|----|----|-----|-----|----|-----|-----|-----|-----|-----|----|-----|-----|-----|-----|-----|-----|----|----|---|-----|----|-----|-----|-----|-----|
| 2002-03 |    |    |     |     |    |     |     |     |     |     |    |     |     |     |     |     |     |    |    |   |     |    |     |     |     |     |
|         |    |    |     |     |    |     |     |     |     |     |    |     |     |     |     |     |     |    |    |   |     |    |     |     |     |     |





**DEREK DAWES**  
 6-11 • 275 • junior • center  
 Salt Lake City, Utah

**LAST OUTING:** Added 4 points, 2 rebounds, 2 blocks and 1 steal in 14 minutes off the bench against Boise State.

**TRACKING DAWES IN 2005-06:** Scored 3 points, all from the free-throw line, with a season-high 2 rebounds and a career-equaling 1 steal (10th time he has recorded 1 steal in a game) in 11 minutes at USC ... scored a season-high 8 points on 3-for-4 shooting while adding a career-equaling 1 steal along with 1 rebound and 1 assists in 12 minutes vs. Lamar in the Delta Center ... made his season debut after recovering from injury, scored 5 points with a career-tying 2 assists and 1 rebound in 12 minutes off the bench vs. SUU ... did not play due to injury in BYU's first two games.

**PLAYER SUMMARY:** One of the most sought-after centers in the West coming out of high school, Dawes started in 13 games last season and was second on the team in rebounds. He is an active player who runs the floor well, is a good free-throw shooter and has range to the three-point arc. He has good shot-blocking ability with great timing and good athleticism and size.

**PERSONAL:** Born October 1981 in Salt Lake City ... parents are Larry and Susan Dawes ... has two younger siblings, Cassidy 21 and Kelsey 16 ... is an Eagle scout ... graduated from Cottonwood High School ... served two-year mission for The Church of Jesus Christ of Latter-day Saints in New Hampshire ... recruited by Ohio State, Arizona State, Florida and San Diego State ... married the former Lauryn Christensen on July 28, 2005 ... public health education major:

**DEREK DAWES – 2005-06 Game-by-Game**

| Opponent            | Date     | GS | Min | TOTAL |     |       | 3-PTS |     |      | REBOUNDS |     |       |      |     |     |     |     |    |   |    | Pts | Avg |     |     |     |  |  |  |  |
|---------------------|----------|----|-----|-------|-----|-------|-------|-----|------|----------|-----|-------|------|-----|-----|-----|-----|----|---|----|-----|-----|-----|-----|-----|--|--|--|--|
|                     |          |    |     | FG    | FGA | Pct   | 3FG   | FGA | Pct  | FT       | FTA | Pct   | Off  | Def | Tot | Avg | PF  | FO | A | TO |     |     | Blk | Stl |     |  |  |  |  |
| LMU                 | 11-18/05 |    |     |       |     |       |       |     |      |          |     |       |      |     |     |     |     |    |   |    |     |     |     |     |     |  |  |  |  |
| at Washington State | 11-22/05 |    |     |       |     |       |       |     |      |          |     |       |      |     |     |     |     |    |   |    |     |     |     |     |     |  |  |  |  |
| SUU                 | 11-26/05 |    | 12  | 2     | 2   | 1.000 | 0     | 0   | .000 | 1        | 2   | .500  | 1    | 0   | 1   | 1.0 | 4   | 0  | 2 | 0  | 0   | 0   | 0   | 5   | 5.0 |  |  |  |  |
| vs Lamar University | 11-30/05 |    | 12  | 3     | 4   | .750  | 0     | 0   | .000 | 2        | 2   | 1.000 | 0    | 1   | 1   | 1.0 | 0   | 0  | 1 | 1  | 0   | 1   | 8   | 6.5 |     |  |  |  |  |
| at USC              | 12/03/05 |    | 11  | 0     | 0   | .000  | 0     | 0   | .000 | 3        | 4   | .750  | 1    | 1   | 2   | 1.3 | 1   | 0  | 0 | 1  | 0   | 1   | 3   | 5.3 |     |  |  |  |  |
| BOISE STATE BRONCOS | 12/07/05 |    | 14  | 1     | 2   | .500  | 0     | 0   | .000 | 2        | 2   | 1.000 | 1    | 1   | 2   | 1.5 | 1   | 0  | 0 | 0  | 2   | 1   | 4   | 5.0 |     |  |  |  |  |
| <b>Totals</b>       |          |    | 0   | 49    | 6   | 8     | .750  | 0   | 0    | .000     | 8   | 10    | .800 | 3   | 3   | 6   | 1.5 | 6  | 0 | 3  | 2   | 2   | 3   | 20  | 5.0 |  |  |  |  |

Games played: 4  
 Points/game: 5.0  
 FG Pct: 75.0  
 FT Pct: 80.0

Rebounds/game: 1.5  
 Assists/game: 0.8  
 Turnovers/game: 0.5  
 Assist/turnover ratio: 1.5  
 Steals/game: 0.8  
 Blocks/game: 0.5

**CAREER HIGHS:**

POINTS: 14 vs. New Mexico (2005)  
 FG MADE: 6 vs. New Mexico (2005)  
 FG ATT: 9 at Wyoming (2005)  
 FG %: .857 (6-7) vs. New Mexico (2005)  
 3FG Made: -  
 3FG ATT: -  
 3FG %: -  
 FT MADE: 8 vs. UNM at MWC (2005)  
 FT ATT: 11 vs. SUU (2005)  
 FT %: 1.000 (3-3) at UNLV (2005)  
 REB: 10 vs. Stanford, at Saint Mary's, vs. New Mexico (2005)  
 ASSTS: 2 (3 times) last vs. SUU (2006)  
 BLOCKS: 4 vs. UNM (2005)  
 STEALS: 1 (11 times) last vs. BSU (2006)  
 MINUTES: 34 at Saint Mary's (2005)

**DAWES YEAR-BY-YEAR BYU STATS**

| YEAR                  | GP        | GS        | MIN        | AVG         | FG        | FGA        | PCT         | 3FG      | FGA      | PCT         | FT        | FTA       | PCT         | OFF       | DEF        | TOT        | AVG        | PF        | FO       | A         | AVG        | TO        | BLK       | STL      | PTS        | AVG        |
|-----------------------|-----------|-----------|------------|-------------|-----------|------------|-------------|----------|----------|-------------|-----------|-----------|-------------|-----------|------------|------------|------------|-----------|----------|-----------|------------|-----------|-----------|----------|------------|------------|
| 2000-01               | 23        | 1         | 155        | 6.7         | 8         | 22         | .364        | 0        | 0        | .000        | 10        | 15        | .667        | 19        | 27         | 46         | 2.0        | 25        | 0        | 2         | 0.1        | 9         | 8         | 1        | 26         | 1.1        |
| 2004-05               | 29        | 13        | 501        | 17.3        | 48        | 111        | .432        | 0        | 0        | .000        | 47        | 71        | .662        | 49        | 84         | 133        | 4.6        | 66        | 3        | 11        | 0.4        | 39        | 25        | 7        | 143        | 4.9        |
| <b>TWO-YEAR TOTAL</b> | <b>52</b> | <b>14</b> | <b>656</b> | <b>12.6</b> | <b>56</b> | <b>133</b> | <b>.421</b> | <b>0</b> | <b>0</b> | <b>.000</b> | <b>57</b> | <b>86</b> | <b>.663</b> | <b>68</b> | <b>111</b> | <b>179</b> | <b>3.4</b> | <b>91</b> | <b>3</b> | <b>13</b> | <b>0.3</b> | <b>48</b> | <b>33</b> | <b>8</b> | <b>169</b> | <b>3.3</b> |







**TRENT PLAISTED**  
 6-11 • 245 • freshman • forward  
 San Antonio, Texas

**LAST OUTING:** Recorded the first BYU double-double of the season against Boise State with 19 points and a career-high 10 rebounds in 26 minutes of play while going 7-for-12 from the floor.

**TRACKING PLAISTED IN 2005-06:** Leads the team and is eighth in the MWC in scoring with 15.8 ppg while also pacing the Cougars in rebounding average this season with 5.8 rebounds per game ... is also fourth in the league in field goal percentage (.589) and tied for sixth in blocked shots pergame (2.33) ... has scored in double figures in every game this season, including the two exhibition contests ... recorded career highs of 20 points and 9 rebounds and tied his career-best 1 assist while adding 1 block in 27 minutes at USC before fouling out ... made a career-high 8 field goals on a career-most 13 attempts and attempted a career-tying 9 free throws ... scored 16 points on 6-of-9 field goals and 4-of-5 free throws while adding a career-high 7 rebounds and a career-tying 2 blocks in 25 minutes vs.

Lamar in the Delta Center ...scored team-leading 13 points while adding 4 rebounds, 2 blocks (career high) and 1 assist (tied career best) in 21 minutes vs. SUU. ... started and scored 10 points while adding 1 rebound, 1 assist and 2 steals at Washington State ... making his first-ever start vs. LMU, the redshirt freshman shot 75 percent (6-8) from the field and went 5-of-6 from the line (83.3 percent) to score a career-high 17 points while adding 4 rebounds and 1 steal ... made an immediate impact in the first start, making his first five shots from the floor and scoring 12 points in the first 11 minutes of the game before taking his first breather on the bench ... logged a career-most 30 minutes.

**PLAYER SUMMARY:** Plaisted is a 6-foot-11, 245-pound left-handed forward who should contribute significantly this season after receiving a medical redshirt last year due to injury. Long and athletic, Plaisted runs the floor well and has a soft shooting touch to 18 feet. He could play the three, four or five position and is a good shot-blocker and solid rebounder: A first-team 5A Texas all-state selection from San Antonio's Clark High, where he averaged 22 points, 10 rebounds, 2 blocks and 2 assists, he has a running vertical of 41 inches, can touch 12-foot-2 and ran a 4.6 40-yard dash on grass wearing tennis shoes this summer.

**PERSONAL:** Born in October 1986 in California ... hails from San Antonio, Texas ... parents are John and Sherry Plaisted ... is the youngest of five children, having three sisters and one brother ... among schools recruiting Plaisted were Florida State, Stanford, Kansas, Oklahoma State, Washington State, Texas A&M, Utah, Arkansas, New Mexico, Texas Tech and Vanderbilt ... pre-business management major.

**TRENT PLAISTED – 2005-06 Game-by-Game**

| Opponent            | Date     | GS | Min | TOTAL |     |      | 3PTS |     |      | REBOUNDS |     |      |      |     |     |     |     |    |   |    | Pts | Avg |     |      |      |
|---------------------|----------|----|-----|-------|-----|------|------|-----|------|----------|-----|------|------|-----|-----|-----|-----|----|---|----|-----|-----|-----|------|------|
|                     |          |    |     | FG    | FGA | Pct  | 3FG  | FGA | Pct  | FT       | FTA | Pct  | Off  | Def | Tot | Avg | PF  | FO | A | TO |     |     | Blk | Stl  |      |
| LMU                 | 11-18-05 | *  | 30  | 6     | 8   | .750 | 0    | 0   | .000 | 5        | 6   | .833 | 2    | 2   | 4   | 4.0 | 4   | 0  | 0 | 3  | 0   | 1   | 17  | 17.0 |      |
| at Washington State | 11/22/05 | *  | 27  | 2     | 5   | .400 | 0    | 0   | .000 | 6        | 8   | .750 | 1    | 0   | 1   | 2.5 | 4   | 0  | 1 | 5  | 0   | 2   | 10  | 13.5 |      |
| SUU                 | 11-26-05 | *  | 21  | 4     | 9   | .444 | 0    | 0   | .000 | 5        | 9   | .556 | 1    | 3   | 4   | 3.0 | 1   | 0  | 1 | 3  | 2   | 0   | 13  | 13.3 |      |
| vs Lamar University | 11-30-05 | *  | 25  | 6     | 9   | .667 | 0    | 0   | .000 | 4        | 5   | .800 | 0    | 7   | 7   | 4.0 | 2   | 0  | 0 | 2  | 2   | 0   | 16  | 14.0 |      |
| at USC              | 12/03/05 | *  | 27  | 8     | 13  | .615 | 0    | 0   | .000 | 4        | 9   | .444 | 6    | 3   | 9   | 5.0 | 5   | 1  | 1 | 2  | 1   | 0   | 20  | 15.2 |      |
| BOISE STATE BRONCOS | 12/07/05 | *  | 26  | 7     | 12  | .583 | 0    | 0   | .000 | 5        | 8   | .625 | 4    | 6   | 10  | 5.8 | 4   | 0  | 0 | 3  | 1   | 0   | 19  | 15.8 |      |
| <b>Totals</b>       |          |    | 6   | 156   | 33  | 56   | .589 | 0   | 0    | .000     | 29  | 45   | .644 | 14  | 21  | 35  | 5.8 | 20 | 1 | 3  | 18  | 6   | 3   | 95   | 15.8 |

Games played: 6  
 Points/game: 15.8  
 FG Pct: 58.9  
 FT Pct: 64.4

Rebounds/game: 5.8  
 Assists/game: 0.5  
 Turnovers/game: 3.0  
 Assist/turnover ratio: 0.2  
 Steals/game: 0.5  
 Blocks/game: 1.0

**CAREER HIGHS:**

POINTS: 20 at USC (2006)  
 FG MADE: 8 at USC (2006)  
 FG AT: 13 at USC (2006)  
 FG %: .750 (6-8) vs. LMU (2006)  
 3FG MADE: -  
 3FG AT: -  
 3FG %: -  
 FT MADE: 6 vs. WSU (2006)  
 FT AT: 9 vs. SUU, at USC (2006)  
 FT %: .833 (5-6) vs. LMU (2006)  
 REB: 10 vs. BSU (2006)  
 ASSISTS: 1 vs. North Carolina (2005),  
 at WSU, vs. SUU, at USC (2006)  
 BLOCKS: 2 vs. SUU, Lamar (2006)  
 STEALS: 2 at WSU (2006)  
 MINUTES: 30 vs. LMU (2006)

**PLAISTED YEAR-BY-YEAR BYU STATS**

| YEAR     | GP | GS | MIN | AVG | FG | FGA | PCT  | 3FG | FGA | PCT  | FT | FTA | PCT  | OFF | DEF | TOT | AVG | PF | FO | A | AVG | TO | BLK | STL | PTS | AVG |
|----------|----|----|-----|-----|----|-----|------|-----|-----|------|----|-----|------|-----|-----|-----|-----|----|----|---|-----|----|-----|-----|-----|-----|
| *2004-05 | 5  | 0  | 44  | 8.8 | 0  | 3   | .000 | 0   | 0   | .000 | 3  | 6   | .500 | 2   | 6   | 8   | 1.6 | 2  | 0  | 1 | 0.2 | 2  | 0   | 0   | 3   | 0.6 |

\*received medical redshirt



**5 PLAYERS SCORED IN DOUBLE FIGURES**

12/7/05 vs. Boise State 80-77 W, Plaisted-19  
Malaman-17, Reichner-12, Broadus-11, Balderson-12

**6 PLAYERS SCORED IN DOUBLE FIGURES**

1/11/05 vs. MSU-Billings 110-70 W, Jensen-16, Hall-14,  
Rose-14, Ainge-10, Nashif-10, Young-10

**NO PLAYERS SCORED IN DOUBLE FIGURES**

2/21/05 at Air Force, 39-70 L

**A PLAYER RECORD A DOUBLE-DOUBLE**

12/7/05 vs. Boise State  
Trent Plaisted, 19 points, 10 rebounds

**TWO PLAYERS RECORD A DOUBLE-DOUBLE**

1/23/99 vs. CS Northridge  
Mark Bigelow 23 points, 11 rebounds  
Nathan Cooper 15 points, 10 rebounds

**TWO DOUBLE-DIGIT REBOUNDERS**

12/30/03 at Santa Clara (Cable Car Classic)  
Rafael Araujo-12, Jake Shoff-12

**SIX PLAYERS HAD 5 OR MORE REBOUNDS**

1/8/05 vs. San Diego State, Jensen-7, Hall-6, Rose-6  
Meads-6, Ainge-6, Miles-5

**FIVE PLAYERS HAD 6 OR MORE REBOUNDS**

1/8/05 vs. San Diego State, Jensen-7, Hall-6, Rose-6  
Meads-6, Ainge-6

**TWO PLAYERS FOULED OUT**

2/26/05 at Utah  
Ainge, Balderson, Reichner

**THREE OR MORE PLAYERS FOULED OUT**

2/26/05 at Utah  
Ainge, Balderson, Reichner

**A BYU PLAYER RECEIVED A TECHNICAL FOUL**

3/5/05 vs. UNLV - Austin Ainge, Mike Hall

**AN OPPONENT PLAYER RECEIVED A TECHNICAL FOUL**

3/5/05 vs. UNLV - Jerel Blessingame

**A BYU COACH RECEIVED A TECHNICAL FOUL**

3/3/03 at UNM - Steve Cleveland

**AN OPPONENT COACH RECEIVED A TECHNICAL FOUL**

12/7/05 vs. Boise State - BSU coach Greg Graham

**A PLAYER EJECTED FROM THE GAME**

11/23/02 vs. Kansas State  
Travis Hansen (2 technical fouls)

**A COACH EJECTED FROM THE GAME**

11/30/05 vs. Lamar (at Delta Center)  
Lamar coach Billy Tubbs (2 tech. fouls)

**AT LEAST TWO PLAYERS SCORED 20+ POINTS**

12/31/04 vs. Santa Clara  
Mike Rose-26, Jared Jensen-23

**THREE PLAYERS SCORED 20+ POINTS**

1/16/03 vs. UNLV, Rafael Araujo-22, Mark Bigelow-21,  
Travis Hansen-20

**FOUR PLAYERS SCORED 20+ POINTS**

1/13/79 vs. UNM, D. Ainge-27, Scott Runia-25,  
Devin Durrant-20, Alan Taylor-20

**TWO PLAYERS SCORED 25+ POINTS**

3/1/01 at New Mexico  
Terrell Lyday-26, Mekeli Wesley-25

**A PLAYER SCORED 30+ POINTS**

12/06/03 vs. Oklahoma State (at Delta Center)  
Rafael Araujo-32

**A PLAYER ATTEMPTED 20 OR MORE FIELD GOALS**

3/20/03 21, Travis Hansen vs. Connecticut (8-21)

**A PLAYER WITH 5 STEALS**

2/14/05 vs. Colorado State - Mike Hall

**A PLAYER HAD DOUBLE-DIGIT ASSISTS**

12/4/04 at USC  
Terry Nashif - 10

**A PLAYER MADE DOUBLE-DIGIT FREE THROWS**

2/7/04 vs. UNLV  
Mike Hall - (10-10)

**A PLAYER 100% AT FT LINE (MIN. 8 ATTS)**

1/8/05 vs. SDSU - Mike Hall (8-8)

**A PLAYER 100% FROM FLOOR (MIN. 5 ATTS)**

1/02/03 vs. Pepperdine  
Jake Shoff (6-6)

**A PLAYER 100% ON TREYS (MIN. 3 ATTS)**

11/26/05 vs. SUU - Fashaun Broadus (3-3)

**DID NOT MAKE A TREY (276 STRAIGHT GAMES WITH 3)**

11/22/96 vs. CS Fullerton (0-9)

**LAST TIME OPPONENT DID NOT MAKE A TREY**

12/14/02 Utah State (0-5)

**BYU HAD SIX OR FEWER TURNOVERS**

3/10/00 vs. Utah, 6

**BYU COMMITTED 25-PLUS TURNOVERS**

1/4/05 at Saint Mary's, 72-51 L (25)

**BYU COMMITTED 11 OR LESS TEAM FOULS IN A GAME**

12/7/00 vs. Florida International, 11

**BYU SCORED 90 POINTS**

11/30/05 vs. Lamar (Delta Center) 97-74 W

**BYU SCORED 100 POINTS**

1/11/05 vs. MSU-Billings 110-70 W

**BYU SCORED 110 POINTS**

1/11/05 vs. MSU-Billings 110-70 W

**BYU SCORED LESS THAN 50 POINTS IN A GAME**

2/21/05 at Air Force 39-70 L

**HELD OPPONENT TO LESS THAN 50 POINTS IN A GAME**

2/14/05 vs. Colorado State 50-49 W

**BYU SCORED LESS THAN 40 POINTS IN A GAME**

2/21/05 at Air Force 39-70 L

**HELD OPPONENT TO LESS THAN 40 POINTS IN A GAME**

2/3/03 vs. Air Force 65-33 W

**SHOT 60% FG**

12/23/04 @ Weber State, (.604), 32-53

**OPPONENT SHOT 60% FG**

2/19/05 at New Mexico, (.620), 31-50

**SHOT 70% FG IN A HALF**

12/31/04 vs. Santa Clara, (.727), 16-22

**DID NOT MISS A 2-POINT ATTEMPT IN A HALF**

2/23/04 vs. Air Force, 13-13 inside the arc, (14-17, .824 overall)

**SHOT LESS THAN 30% FG**

2/21/05 at Air Force, (.280), 14-50

**SHOT 100% FT**

1/4/05 @ Saint Mary's, 3-3

**SHOT 90% FT (at least 10 attempts)**

11/30/05 vs. Lamar, (.909), 20-22

**SHOT LESS THAN 50% FT**

2/14/05 vs. Colorado State, (.471), 8-17

**SHOT 60% THREE-POINTERS**

11/26/05 vs. SUU, (.647), 11-17

**SHOT 70% THREE-POINTERS**

1/16/93 @ Air Force, (.733), 11-15

**OPPONENT SCORED LESS THAN 20 POINTS IN FIRST HALF**

1/8/05 SDSU, 19 (BYU led 28-19)

**SCORED LESS THAN 20 POINTS IN THE FIRST HALF**

2/21/05 at Air Force, 13 (BYU trailed 13-37)

**SCORED LESS THAN 20 POINTS IN THE SECOND HALF**

1/15/00 vs. Utah, 19

**SCORED OVER 50 POINTS IN FIRST HALF**

1/11/05 vs. MSU-Billings, 57

**SCORED OVER 50 POINTS IN SECOND HALF**

1/11/05 vs. MSU-Billings, 53

**SCORED OVER 60 POINTS IN FIRST HALF**

2/25/93 vs. Sacramento St., 62

**SCORED OVER 60 POINTS IN SECOND HALF**

12/28/95 vs. Morgan St., 61

**ALLOWED OVER 50 POINTS IN A HALF**

2/19/05 at New Mexico, 51 (first half)

**WON BY 50 POINTS**

2/25/93 vs. Sacramento State (50) 128-78 W

**WON BY 40 POINTS**

1/11/05 vs. MSU-Billings (40) 110-70 W

**WON BY 30 POINTS**

12/10/03 vs. Western Oregon (36) 92-56 W

**WON BY 25 POINTS**

11/26/05 vs. SUU (25) 86-61 W

**LOST BY 35-plus POINTS**

11/22/04 vs. North Carolina (36) 86-50 L

**LOST BY 30 POINTS**

2/21/05 @ Air Force (31) 39-70 L

**LOST BY 25 POINTS**

1/7/04 @ NC State (27) 89-62 L

**PLAYED OVERTIME GAME**

2/5/05 at UNLV, 82-72 W

**WON GAME IN SINGLE OVERTIME**

2/5/05 at UNLV, 82-72 W

**LOST IN OVERTIME**

3/14/03 vs. CSU at MWC 80-86 L

**PLAYED A DOUBLE OT GAME**

3/5/88 vs. UTEP 80-83 L 2OT

**PLAYED A TRIPLE OT GAME**

2/28/98 @ UTEP 76-75 W 3OT

**WON 15 STRAIGHT GAMES**

1987-88 (17)

**WON 10 STRAIGHT GAMES**

1992-93 (13)

**WON 9 STRAIGHT GAMES**

2003-04

**WON 6 STRAIGHT GAMES**

2003-04 (twice)

**LOST 3 STRAIGHT GAMES**

2004-05 (three times)  
last time - @ New Mexico, @ Air Force, @ Utah

**LOST 4 STRAIGHT GAMES**

2004-05 @ New Mexico, @ Air Force, @ Utah, UNLV

**LOST 5 STRAIGHT**

2004-05 @ UNM, @ AFA, @ Utah, UNLV, vs. UNM (at MWC)

**LOST 9 STRAIGHT**

1997-98

**LOST 10 STRAIGHT GAMES**

1996-97 (21) - school record

**WENT TO AN NCAA GAME**

3/18/04 vs. Syracuse 75-80 L

**WON AN NCAA GAME**

3/18/93 vs. SMU 80-71 W  
Then lost to Kansas 76-90 in second round

**WON TWO NCAA GAMES**

1980-81 Princeton 60-51, UCLA 78-55, Notre Dame 51-50  
Then lost to Virginia 60-74 L

**WON THREE NCAA GAMES**

1980-81 Princeton 60-51, UCLA 78-55, Notre Dame 51-50  
Then lost to Virginia 60-74 L

**WON FOUR NCAA GAMES**

Never

**PLAYED IN THE NIT**

2001-2002 Season

**WON AN NIT GAME**

3/14/02 vs. UC Irvine 78-55 W

**WON TWO NIT GAMES**

1999-00 Bowling Green 81-54, So. Illinois 82-57  
Then lost to Notre Dame in quarterfinals

**WON THREE NIT GAMES**

1965-66 NIT CHAMPIONS  
1950-51 NIT CHAMPIONS

**WON CONFERENCE TOURNEY**

2000-01

**WON CONFERENCE REGULAR SEASON**

2002-03 - Tied with Utah

**WON CONFERENCE REGULAR SEASON OUTRIGHT**

1987-88

**APPEARED ON ESPN**

1/31/05 vs. Utah, 72-58 L

**APPEARED ON ESPN 2**

11/22/04 vs. North Carolina, 86-50 L

**APPEARED ON ESPN+PLUS**

3/10/05 vs. New Mexico at MWC Tournament 71-85 L

**APPEARED ON CBS**

3/15/03 vs. Syracuse 75-80 L

**APPEARED ON ABC**

1/22/05 vs. Air Force 49-52 L

**WAS RANKED IN THE TOP-25 AP POLL**

March 8, 1993 - Ranked 25th

**FINISHED SEASON RANKED IN THE TOP-25 POLL**

1987-88 Season - 19th (AP), 17th (UPI)



# 2005-06 Box Scores

# 2005-06 BYU Men's Basketball

## BYU vs. Loyola Marymount - Game #1

11-19-05 7:05 p.m. at Marriott Center, Provo, Utah  
VISITORS: LMU 1-0

| ##          | Player           | fg | fga | 3pt | fga | fta | fta | of | de | tot | pf | tp | a  | to | blk | s | min |
|-------------|------------------|----|-----|-----|-----|-----|-----|----|----|-----|----|----|----|----|-----|---|-----|
| 14          | KNIIGHT, Matthew | f  | 9   | 14  | 0   | 4   | 6   | 3  | 7  | 10  | 2  | 22 | 1  | 3  | 2   | 1 | 31  |
| 40          | AYER, Chris      | c  | 6   | 10  | 0   | 3   | 4   | 5  | 5  | 10  | 4  | 15 | 0  | 2  | 0   | 0 | 33  |
| 00          | WORTHY, Brandon  | g  | 2   | 10  | 0   | 3   | 7   | 8  | 0  | 2   | 2  | 11 | 4  | 0  | 0   | 0 | 32  |
| 04          | MILLER, Adoyah   | g  | 2   | 6   | 0   | 2   | 1   | 2  | 1  | 2   | 2  | 5  | 1  | 4  | 0   | 1 | 25  |
| 13          | WARDROP, Wes     | g  | 7   | 12  | 4   | 2   | 2   | 0  | 4  | 4   | 3  | 19 | 4  | 2  | 1   | 3 | 33  |
| 03          | PEGRAM, Daryl    | 1  | 3   | 0   | 2   | 0   | 1   | 0  | 1  | 2   | 2  | 2  | 0  | 0  | 0   | 0 | 14  |
| 05          | MONTGOMERY, John | 0  | 0   | 0   | 0   | 0   | 0   | 1  | 1  | 0   | 0  | 1  | 0  | 0  | 0   | 0 | 6   |
| 10          | KANINE, Chris    | 0  | 0   | 0   | 0   | 0   | 0   | 0  | 0  | 0   | 0  | 0  | 0  | 0  | 0   | 0 | 6   |
| 12          | DEMIC, Merko     | 0  | 0   | 0   | 0   | 0   | 0   | 0  | 0  | 0   | 0  | 0  | 0  | 0  | 0   | 0 | 6   |
| 23          | ZIRL, Jon        | 0  | 2   | 0   | 1   | 0   | 0   | 0  | 0  | 0   | 1  | 0  | 3  | 0  | 0   | 0 | 10  |
| 32          | HAYWOOD, John    | 0  | 0   | 0   | 0   | 0   | 0   | 0  | 0  | 0   | 0  | 0  | 0  | 0  | 0   | 0 | 10  |
| 42          | BROWN, Dustin    | 4  | 8   | 0   | 1   | 2   | 2   | 4  | 6  | 8   | 1  | 0  | 1  | 2  | 1   | 6 | 16  |
| 53          | BACCARDI, Victor | 0  | 0   | 0   | 0   | 1   | 2   | 0  | 0  | 0   | 1  | 0  | 0  | 0  | 0   | 0 | 6   |
| TEAM        |                  |    |     |     |     |     |     |    |    |     |    |    |    |    |     |   | 24  |
| Totals..... |                  | 31 | 65  | 3   | 13  | 18  | 24  | 14 | 26 | 40  | 15 | 83 | 15 | 15 | 4   | 8 | 200 |

|           |                       |                       |             |          |
|-----------|-----------------------|-----------------------|-------------|----------|
| TOTAL FG% | 1st Half: 19-39 48.7% | 2nd Half: 12-26 46.2% | Game: 47.7% | DEADBALL |
| 3-Pt. FG% | 1st Half: 1-8 12.5%   | 2nd Half: 2-5 40.0%   | Game: 23.1% | REBOUNDS |
| F Throw % | 1st Half: 2-4 50.0%   | 2nd Half: 16-20 80.0% | Game: 75.0% | 2        |

### HOME TEAM: BYU Cougars 0-1

| ##          | Player            | fg | fga | 3pt | fga | fta | fta | of | de | tot | pf | tp | a  | to | blk | s  | min |
|-------------|-------------------|----|-----|-----|-----|-----|-----|----|----|-----|----|----|----|----|-----|----|-----|
| 15          | MALAMAN, Fernando | f  | 2   | 6   | 2   | 3   | 0   | 0  | 0  | 4   | 4  | 3  | 6  | 4  | 1   | 1  | 30  |
| 23          | BALDERSON, Jimmy  | f  | 6   | 13  | 1   | 4   | 5   | 6  | 2  | 5   | 7  | 5  | 18 | 2  | 3   | 1  | 23  |
| 44          | PLAISTED, Trent   | c  | 6   | 8   | 0   | 0   | 5   | 6  | 2  | 4   | 4  | 17 | 0  | 3  | 0   | 1  | 30  |
| 01          | BROADUS, Rashaun  | g  | 4   | 13  | 1   | 3   | 0   | 0  | 1  | 1   | 3  | 9  | 3  | 2  | 0   | 2  | 30  |
| 13          | AINGE, Austin     | g  | 1   | 2   | 0   | 2   | 3   | 0  | 3  | 3   | 1  | 4  | 3  | 3  | 0   | 0  | 21  |
| 02          | ROSE, Mike        | 4  | 9   | 2   | 4   | 2   | 1   | 1  | 2  | 2   | 12 | 0  | 1  | 0  | 0   | 0  | 21  |
| 03          | YOUNG, Keena      | 0  | 1   | 0   | 0   | 0   | 3   | 3  | 2  | 0   | 1  | 2  | 1  | 0  | 0   | 9  |     |
| 04          | EMERY, Jackson    | 0  | 1   | 0   | 0   | 0   | 0   | 0  | 0  | 0   | 0  | 0  | 1  | 0  | 0   | 2  |     |
| 11          | REICHNER, Brock   | 0  | 2   | 0   | 1   | 0   | 0   | 0  | 0  | 0   | 1  | 0  | 1  | 0  | 0   | 2  |     |
| 30          | CUMMARD, Lee      | 1  | 2   | 1   | 0   | 0   | 0   | 0  | 0  | 0   | 1  | 3  | 0  | 1  | 0   | 16 |     |
| 34          | BURGESS, David    | 1  | 3   | 0   | 0   | 0   | 1   | 2  | 3  | 2   | 0  | 1  | 1  | 0  | 1   | 11 |     |
| TEAM        |                   |    |     |     |     |     |     |    |    |     |    |    |    |    |     |    | 11  |
| Totals..... |                   | 25 | 60  | 7   | 17  | 14  | 17  | 10 | 24 | 34  | 23 | 71 | 14 | 19 | 5   | 4  | 200 |

|           |                       |                       |             |          |
|-----------|-----------------------|-----------------------|-------------|----------|
| TOTAL FG% | 1st Half: 12-28 42.9% | 2nd Half: 13-32 40.6% | Game: 41.7% | DEADBALL |
| 3-Pt. FG% | 1st Half: 3-10 30.0%  | 2nd Half: 4-7 57.1%   | Game: 41.2% | REBOUNDS |
| F Throw % | 1st Half: 3-4 75.0%   | 2nd Half: 11-13 84.6% | Game: 82.4% | 2        |

Officials: Randy McCall, Mark Whitehead, Kelly Self

Technical fouls: LMU-None, BYU Cougars-None.

Attendance: 9826

|                  |     |     |       |
|------------------|-----|-----|-------|
| Score by Periods | 1st | 2nd | Total |
| BYU              | 41  | 42  | 83    |
| LMU              | 30  | 41  | 71    |

Points in the paint-LMU 28;BY 28. Points off turnovers-LMU 21;BY 18.  
2nd chance points-LMU 16;BY 11. Fast break points-LMU 4;BY 8.  
Bench points-LMU 11;BY 17. Score tied 2 times. Lead changes-1 time.

## BYU vs. Southern Utah - Game #3

11-26-05 7:05 p.m. at PROVO, Utah  
VISITORS: SUU 0-5, 0-0 Mid-Con

| ##          | Player           | fg | fga | 3pt | fga | fta | fta | of | de | tot | pf | tp | a  | to | blk | s | min |
|-------------|------------------|----|-----|-----|-----|-----|-----|----|----|-----|----|----|----|----|-----|---|-----|
| 40          | JANIS, Nate      | f  | 2   | 6   | 0   | 0   | 0   | 7  | 8  | 0   | 1  | 4  | 1  | 0  | 0   | 2 | 23  |
| 50          | BONFIM, Fernando | c  | 5   | 10  | 0   | 2   | 4   | 2  | 3  | 5   | 3  | 2  | 1  | 0  | 0   | 0 | 20  |
| 03          | UHEGVU, Henry    | g  | 2   | 7   | 2   | 4   | 4   | 0  | 1  | 1   | 4  | 1  | 0  | 3  | 0   | 0 | 23  |
| 05          | BAHRAND, Steve   | g  | 2   | 7   | 1   | 3   | 3   | 4  | 0  | 2   | 2  | 1  | 8  | 1  | 5   | 0 | 28  |
| 22          | ALLEN, Justin    | g  | 3   | 7   | 0   | 1   | 2   | 5  | 1  | 4   | 5  | 1  | 8  | 3  | 2   | 0 | 28  |
| 10          | MAREK, David     | 0  | 0   | 0   | 0   | 0   | 0   | 0  | 0  | 0   | 0  | 0  | 0  | 0  | 0   | 9 |     |
| 12          | CRUM, Dex        | 0  | 0   | 0   | 0   | 0   | 0   | 0  | 0  | 0   | 0  | 0  | 0  | 0  | 0   | 2 |     |
| 23          | DAVIS, Eli       | 1  | 4   | 1   | 2   | 0   | 0   | 1  | 2  | 3   | 2  | 3  | 1  | 1  | 0   | 1 | 14  |
| 30          | JAMES, Rand      | 3  | 8   | 3   | 6   | 0   | 0   | 1  | 1  | 1   | 0  | 9  | 1  | 0  | 0   | 2 | 19  |
| 33          | ABRANAH, Junior  | 0  | 1   | 0   | 0   | 0   | 4   | 6  | 2  | 4   | 3  | 4  | 1  | 0  | 1   | 0 | 12  |
| 41          | BONZARD, Esteban | 2  | 4   | 2   | 4   | 0   | 0   | 1  | 2  | 3   | 2  | 6  | 0  | 0  | 0   | 1 | 22  |
| TEAM        |                  |    |     |     |     |     |     |    |    |     |    |    |    |    |     |   | 12  |
| Totals..... |                  | 15 | 49  | 9   | 20  | 22  | 31  | 8  | 20 | 28  | 20 | 61 | 10 | 13 | 1   | 8 | 200 |

|           |                      |                       |             |          |
|-----------|----------------------|-----------------------|-------------|----------|
| TOTAL FG% | 1st Half: 9-25 36.0% | 2nd Half: 6-24 25.0%  | Game: 30.6% | DEADBALL |
| 3-Pt. FG% | 1st Half: 6-14 42.9% | 2nd Half: 3-6 50.0%   | Game: 45.0% | REBOUNDS |
| F Throw % | 1st Half: 1-2 50.0%  | 2nd Half: 21-29 72.4% | Game: 71.0% | 6        |

### HOME TEAM: BYU Cougars 2-1, 0-0 Mid-Con

| ##          | Player            | fg | fga | 3pt | fga | fta | fta | of | de | tot | pf | tp | a  | to | blk | s | min |
|-------------|-------------------|----|-----|-----|-----|-----|-----|----|----|-----|----|----|----|----|-----|---|-----|
| 15          | MALAMAN, Fernando | f  | 4   | 5   | 1   | 1   | 0   | 0  | 2  | 4   | 2  | 9  | 0  | 2  | 0   | 1 | 27  |
| 23          | BALDERSON, Jimmy  | f  | 1   | 2   | 0   | 1   | 1   | 2  | 0  | 2   | 2  | 3  | 3  | 2  | 0   | 1 | 20  |
| 44          | PLAISTED, Trent   | c  | 4   | 9   | 0   | 0   | 5   | 9  | 1  | 3   | 4  | 1  | 3  | 1  | 0   | 0 | 21  |
| 01          | BROADUS, Rashaun  | g  | 4   | 6   | 3   | 3   | 0   | 1  | 0  | 3   | 3  | 1  | 1  | 1  | 0   | 0 | 19  |
| 11          | REICHNER, Brock   | g  | 4   | 8   | 4   | 0   | 0   | 1  | 3  | 4   | 0  | 1  | 1  | 0  | 0   | 0 | 23  |
| 02          | ROSE, Mike        | 1  | 2   | 1   | 2   | 2   | 0   | 2  | 0  | 2   | 2  | 0  | 5  | 2  | 0   | 0 | 13  |
| 03          | YOUNG, Keena      | 2  | 3   | 0   | 1   | 0   | 0   | 5  | 5  | 4   | 4  | 0  | 2  | 0  | 0   | 2 | 16  |
| 13          | AINGE, Austin     | 3  | 4   | 2   | 3   | 2   | 2   | 0  | 0  | 2   | 10 | 0  | 1  | 0  | 0   | 9 |     |
| 04          | EMERY, Jackson    | 3  | 4   | 0   | 0   | 0   | 0   | 0  | 4  | 4   | 1  | 6  | 8  | 0  | 0   | 2 | 16  |
| 30          | CUMMARD, Lee      | 3  | 6   | 1   | 2   | 2   | 2   | 2  | 2  | 2   | 2  | 9  | 2  | 0  | 1   | 0 | 19  |
| 34          | BURGESS, David    | 0  | 2   | 0   | 0   | 0   | 0   | 0  | 0  | 0   | 0  | 0  | 0  | 0  | 0   | 0 | 2   |
| 41          | ODUEGA, Jermaine  | 0  | 0   | 0   | 0   | 0   | 0   | 0  | 2  | 2   | 0  | 0  | 0  | 1  | 0   | 4 |     |
| 43          | DAWES, Derek      | 2  | 2   | 0   | 0   | 1   | 2   | 1  | 0  | 1   | 4  | 5  | 2  | 0  | 0   | 0 | 12  |
| TEAM        |                   |    |     |     |     |     |     |    |    |     |    |    |    |    |     |   | 11  |
| Totals..... |                   | 31 | 53  | 11  | 17  | 13  | 22  | 7  | 29 | 36  | 22 | 86 | 22 | 13 | 3   | 7 | 200 |

|           |                       |                       |             |          |
|-----------|-----------------------|-----------------------|-------------|----------|
| TOTAL FG% | 1st Half: 13-26 50.0% | 2nd Half: 18-27 66.7% | Game: 58.5% | DEADBALL |
| 3-Pt. FG% | 1st Half: 5-9 55.6%   | 2nd Half: 6-9 66.7%   | Game: 64.7% | REBOUNDS |
| F Throw % | 1st Half: 6-11 54.5%  | 2nd Half: 7-11 63.6%  | Game: 59.1% | 4        |

Officials: Winston Stith, Roosevelt Brown, Doran Gotschall

Technical fouls: SUU-None, BYU Cougars-None.

Attendance: 8926

|                  |     |     |       |
|------------------|-----|-----|-------|
| Score by Periods | 1st | 2nd | Total |
| SUU              | 25  | 36  | 61    |
| BYU Cougars      | 37  | 49  | 86    |

Points in the paint-SUU 4;BY 31. Points off turnovers-SUU 17;BY 15.  
2nd chance points-SUU 7;BY 10. Fast break points-SUU 0;BY 9.  
Bench points-SUU 22;BY 39. Score tied 1 time. Lead changes-2 times.

## BYU at USC - Game #5

12/03/05 7:30 p.m. at Los Angeles, Calif. (Sports Arena)  
VISITORS: BYU 3-2

| ## | Player            | fg | fga | 3pt | fga | fta | fta | of | de | tot | pf | tp  | a | to | blk | s | min |
|----|-------------------|----|-----|-----|-----|-----|-----|----|----|-----|----|-----|---|----|-----|---|-----|
| 15 | MALAMAN, Fernando | f  | 1   | 2   | 1   | 1   | 4   | 0  | 4  | 4   | 2  | 0   | 1 | 1  | 1   | 1 | 17  |
| 44 | PLAISTED, Trent   | f  | 8   | 13  | 0   | 4   | 9   | 6  | 3  | 9   | 5  | 20  | 1 | 2  | 0   | 0 | 27  |
| 01 | BROADUS, Rashaun  | g  | 1   | 8   | 1   | 5   | 0   | 1  | 7  | 8   | 1  | 3   | 5 | 4  | 0   | 0 | 34  |
| 11 | REICHNER, Brock   | g  | 1   | 4   | 0   | 1   | 0   | 0  | 1  | 1   | 3  | 2   | 1 | 0  | 1   | 0 | 13  |
| 23 | BALDERSON, Jimmy  | g  | 4   | 12  | 1   | 6   | 4   | 6  | 2  | 4   | 13 | 1   | 2 | 0  | 0   | 0 | 32  |
| 02 | ROSE, Mike        | 1  | 6   | 1   | 5   | 0   | 0   | 0  | 0  | 0   | 2  | 3   | 0 | 1  | 0   | 1 | 11  |
| 03 | YOUNG, Keena      | 1  | 4   | 0   | 0   | 1   | 2   | 4  | 6  | 2   | 3  | 1   | 1 | 1  | 1   | 1 | 26  |
| 04 | EMERY, Jackson    | 3  | 6   | 1   | 3   | 2   | 1   | 0  | 1  | 2   | 9  | 0   | 2 | 0  | 1   | 9 |     |
| 13 | AINGE, Austin     | 0  | 0   | 0   | 0   | 0   | 0   | 0  | 0  | 0   | 0  | 0   | 2 | 1  | 0   | 0 | 7   |
| 30 | CUMMARD, Lee      | 2  | 4   | 1   | 2   | 0   | 1   | 1  | 2  | 4   | 5  | 1</ |   |    |     |   |     |

2005-06 BYU Basketball  
 BYU Cougars Combined Team Statistics (as of Dec 07, 2005)  
 All games

|                     |                |             |             |                |
|---------------------|----------------|-------------|-------------|----------------|
| <b>RECORD:</b>      | <b>OVERALL</b> | <b>HOME</b> | <b>AWAY</b> | <b>NEUTRAL</b> |
| ALL GAMES.....      | (4-2)          | (2-1)       | (1-1)       | (1-0)          |
| CONFERENCE.....     | (0-0)          | (0-0)       | (0-0)       | (0-0)          |
| NON-CONFERENCE..... | (4-2)          | (2-1)       | (1-1)       | (1-0)          |

| ##             | Player              | GP-GS | Min--Avg | ---TOTAL--- |      | ---3-PTS--- |      | FT-FTA | Pct   | ---REBOUNDS--- |     |     |      | PF  | FO | A   | TO | Blk | Stl | Pts | Avg  |
|----------------|---------------------|-------|----------|-------------|------|-------------|------|--------|-------|----------------|-----|-----|------|-----|----|-----|----|-----|-----|-----|------|
|                |                     |       |          | FG-FGA      | Pct  | 3FG-FGA     | Pct  |        |       | Off            | Def | Tot | Avg  |     |    |     |    |     |     |     |      |
| 44             | PLAISTED, Trent.... | 6-6   | 156 26.0 | 33-56       | .589 | 0-0         | .000 | 29-45  | .644  | 14             | 21  | 35  | 5.8  | 20  | 1  | 3   | 18 | 6   | 3   | 95  | 15.8 |
| 23             | BALDERSON, Jimmy... | 6-6   | 154 25.7 | 26-57       | .456 | 5-22        | .227 | 20-27  | .741  | 7              | 17  | 24  | 4.0  | 18  | 1  | 12  | 13 | 1   | 4   | 77  | 12.8 |
| 15             | MALAMAN, Fernando.. | 6-6   | 161 26.8 | 22-34       | .647 | 8-11        | .727 | 5-6    | .833  | 4              | 19  | 23  | 3.8  | 14  | 0  | 6   | 7  | 5   | 8   | 57  | 9.5  |
| 11             | REICHNER, Brock.... | 6-5   | 109 18.2 | 16-36       | .444 | 10-19       | .526 | 8-12   | .667  | 1              | 10  | 11  | 1.8  | 8   | 0  | 11  | 9  | 0   | 5   | 50  | 8.3  |
| 01             | BROADUS, Rashaun... | 6-6   | 164 27.3 | 18-46       | .391 | 6-15        | .400 | 5-12   | .417  | 1              | 24  | 25  | 4.2  | 12  | 0  | 31  | 16 | 1   | 5   | 47  | 7.8  |
| 43             | DAWES, Derek.....   | 4-0   | 49 12.3  | 6-8         | .750 | 0-0         | .000 | 8-10   | .800  | 3              | 3   | 6   | 1.5  | 6   | 0  | 3   | 2  | 2   | 3   | 20  | 5.0  |
| 30             | CUMMARD, Lee.....   | 6-0   | 83 13.8  | 10-21       | .476 | 5-9         | .556 | 4-7    | .571  | 3              | 7   | 10  | 1.7  | 10  | 0  | 8   | 4  | 2   | 1   | 29  | 4.8  |
| 03             | YOUNG, Keena.....   | 6-0   | 96 16.0  | 12-24       | .500 | 0-1         | .000 | 5-6    | .833  | 8              | 19  | 27  | 4.5  | 13  | 0  | 6   | 7  | 2   | 3   | 29  | 4.8  |
| 02             | ROSE, Mike.....     | 6-0   | 67 11.2  | 8-26        | .308 | 6-16        | .375 | 4-4    | 1.000 | 2              | 5   | 7   | 1.2  | 5   | 0  | 2   | 4  | 0   | 2   | 26  | 4.3  |
| 04             | EMERY, Jackson....  | 6-0   | 57 9.5   | 8-17        | .471 | 4-11        | .364 | 4-4    | 1.000 | 2              | 0   | 2   | 0.3  | 10  | 0  | 0   | 5  | 0   | 1   | 24  | 4.0  |
| 13             | AINGE, Austin.....  | 6-1   | 83 13.8  | 8-16        | .500 | 2-4         | .500 | 2-4    | .500  | 1              | 11  | 12  | 2.0  | 2   | 0  | 20  | 8  | 0   | 2   | 20  | 3.3  |
| 41             | ODJEGBA, Jermaine.. | 2-0   | 6 3.0    | 0-0         | .000 | 0-0         | .000 | 2-2    | 1.000 | 0              | 2   | 2   | 1.0  | 2   | 0  | 0   | 2  | 0   | 0   | 2   | 1.0  |
| 34             | BURGESS, David....  | 3-0   | 15 5.0   | 1-6         | .167 | 0-0         | .000 | 0-0    | .000  | 2              | 3   | 5   | 1.7  | 2   | 0  | 0   | 1  | 1   | 0   | 2   | 0.7  |
| TEAM.....      |                     |       |          |             |      |             |      |        |       | 11             | 11  | 22  | 3.7  | 0   |    | 0   |    |     |     |     |      |
| Total.....     |                     | 6     | 1200     | 168-347     | .484 | 46-108      | .426 | 96-139 | .691  | 59             | 152 | 211 | 35.2 | 122 | 2  | 102 | 96 | 20  | 37  | 478 | 79.7 |
| Opponents..... |                     | 6     | 1200     | 151-345     | .438 | 36-102      | .353 | 99-133 | .744  | 58             | 139 | 197 | 32.8 | 118 | -  | 88  | 95 | 14  | 43  | 437 | 72.8 |

| TEAM STATISTICS         | BY      | OPP     | DATE      | OPPONENT            | W/L | SCORE | ATTEND |
|-------------------------|---------|---------|-----------|---------------------|-----|-------|--------|
| SCORING.....            | 478     | 437     | 11-18-05  | LMU                 | L   | 71-83 | 9826   |
| Points per game.....    | 79.7    | 72.8    | #11/22/05 | at Washington State | W   | 76-68 | 3138   |
| Scoring margin.....     | +6.8    | -       | 11-26-05  | SUU                 | W   | 86-61 | 8926   |
| FIELD GOALS-ATT.....    | 168-347 | 151-345 | 11-30-05  | vs Lamar University | W   | 97-74 | 8383   |
| Field goal pct.....     | .484    | .438    | 12/03/05  | at USC              | L   | 68-74 | 2007   |
| 3 POINT FG-ATT.....     | 46-108  | 36-102  | 12/07/05  | BOISE STATE BRONCOS | W   | 80-77 | 8347   |
| 3-point FG pct.....     | .426    | .353    |           |                     |     |       |        |
| 3-pt FG made per game.. | 7.7     | 6.0     |           |                     |     |       |        |
| FREE THROWS-ATT.....    | 96-139  | 99-133  |           |                     |     |       |        |
| Free throw pct.....     | .691    | .744    |           |                     |     |       |        |
| REBOUNDS.....           | 211     | 197     |           |                     |     |       |        |
| Rebounds per game.....  | 35.2    | 32.8    |           |                     |     |       |        |
| Rebounding margin.....  | +2.3    | -       |           |                     |     |       |        |
| ASSISTS.....            | 102     | 88      |           |                     |     |       |        |
| Assists per game.....   | 17.0    | 14.7    |           |                     |     |       |        |
| TURNOVERS.....          | 96      | 95      |           |                     |     |       |        |
| Turnovers per game..... | 16.0    | 15.8    |           |                     |     |       |        |
| Turnover margin.....    | -0.2    | -       |           |                     |     |       |        |
| Assist/turnover ratio.. | 1.1     | 0.9     |           |                     |     |       |        |
| STEALS.....             | 37      | 43      |           |                     |     |       |        |
| Steals per game.....    | 6.2     | 7.2     |           |                     |     |       |        |
| BLOCKS.....             | 20      | 14      |           |                     |     |       |        |
| Blocks per game.....    | 3.3     | 2.3     |           |                     |     |       |        |
| WINNING STREAK.....     | 1       | -       |           |                     |     |       |        |
| Home win streak.....    | 2       | -       |           |                     |     |       |        |
| ATTENDANCE.....         | 27099   | 13528   |           |                     |     |       |        |
| Home games-Avg/Game...  | 3-9033  | 2-2572  |           |                     |     |       |        |
| Neutral site-Avg/Game.. | -       | 1-8383  |           |                     |     |       |        |

| SCORE BY PERIODS: | 1st | 2nd | Total |
|-------------------|-----|-----|-------|
| BYU Cougars.....  | 211 | 267 | - 478 |
| Opponents.....    | 209 | 228 | - 437 |

2005-06 BYU Basketball  
 BYU Cougars Category Leaders (as of Dec 07, 2005)  
 All games

| FG PERCENTAGE        | FG | ATT | Pct  |
|----------------------|----|-----|------|
| DAWES, Derek.....    | 6  | 8   | .750 |
| MALAMAN, Fernando... | 22 | 34  | .647 |
| PLAISTED, Trent..... | 33 | 56  | .589 |
| AINGE, Austin.....   | 8  | 16  | .500 |
| YOUNG, Keena.....    | 12 | 24  | .500 |
| CUMMARD, Lee.....    | 10 | 21  | .476 |
| EMERY, Jackson.....  | 8  | 17  | .471 |
| BALDERSON, Jimmy.... | 26 | 57  | .456 |
| REICHNER, Brock..... | 16 | 36  | .444 |
| BROADUS, Rashaun.... | 18 | 46  | .391 |
| ROSE, Mike.....      | 8  | 26  | .308 |
| BURGESS, David.....  | 1  | 6   | .167 |

| FIELD GOAL ATTEMPTS  | G | Att | Att/G |
|----------------------|---|-----|-------|
| BALDERSON, Jimmy.... | 6 | 57  | 9.5   |
| PLAISTED, Trent..... | 6 | 56  | 9.3   |
| BROADUS, Rashaun.... | 6 | 46  | 7.7   |
| REICHNER, Brock..... | 6 | 36  | 6.0   |
| MALAMAN, Fernando... | 6 | 34  | 5.7   |

| FIELD GOALS MADE     | G | Made | Made/G |
|----------------------|---|------|--------|
| PLAISTED, Trent..... | 6 | 33   | 5.5    |
| BALDERSON, Jimmy.... | 6 | 26   | 4.3    |
| MALAMAN, Fernando... | 6 | 22   | 3.7    |
| BROADUS, Rashaun.... | 6 | 18   | 3.0    |
| REICHNER, Brock..... | 6 | 16   | 2.7    |

| 3-POINT PERCENTAGE   | 3FG | ATT | Pct  |
|----------------------|-----|-----|------|
| MALAMAN, Fernando... | 8   | 11  | .727 |
| CUMMARD, Lee.....    | 5   | 9   | .556 |
| REICHNER, Brock..... | 10  | 19  | .526 |
| AINGE, Austin.....   | 2   | 4   | .500 |
| BROADUS, Rashaun.... | 6   | 15  | .400 |
| ROSE, Mike.....      | 6   | 16  | .375 |
| EMERY, Jackson.....  | 4   | 11  | .364 |
| BALDERSON, Jimmy.... | 5   | 22  | .227 |
| YOUNG, Keena.....    | 0   | 1   | .000 |

| 3-POINT FG ATTEMPTS  | G | Att | Att/G |
|----------------------|---|-----|-------|
| BALDERSON, Jimmy.... | 6 | 22  | 3.7   |
| REICHNER, Brock..... | 6 | 19  | 3.2   |
| ROSE, Mike.....      | 6 | 16  | 2.7   |
| BROADUS, Rashaun.... | 6 | 15  | 2.5   |
| EMERY, Jackson.....  | 6 | 11  | 1.8   |
| MALAMAN, Fernando... | 6 | 11  | 1.8   |

| 3-POINT FGS MADE     | G | Made | Made/G |
|----------------------|---|------|--------|
| REICHNER, Brock..... | 6 | 10   | 1.7    |
| MALAMAN, Fernando... | 6 | 8    | 1.3    |
| BROADUS, Rashaun.... | 6 | 6    | 1.0    |
| ROSE, Mike.....      | 6 | 6    | 1.0    |
| CUMMARD, Lee.....    | 6 | 5    | 0.8    |
| BALDERSON, Jimmy.... | 6 | 5    | 0.8    |

| FT PERCENTAGE        | FT | ATT | Pct   |
|----------------------|----|-----|-------|
| ODJEGBA, Jermaine... | 2  | 2   | 1.000 |
| EMERY, Jackson.....  | 4  | 4   | 1.000 |
| ROSE, Mike.....      | 4  | 4   | 1.000 |
| MALAMAN, Fernando... | 5  | 6   | .833  |
| YOUNG, Keena.....    | 5  | 6   | .833  |
| DAWES, Derek.....    | 8  | 10  | .800  |
| BALDERSON, Jimmy.... | 20 | 27  | .741  |
| REICHNER, Brock..... | 8  | 12  | .667  |
| PLAISTED, Trent..... | 29 | 45  | .644  |
| CUMMARD, Lee.....    | 4  | 7   | .571  |
| AINGE, Austin.....   | 2  | 4   | .500  |
| BROADUS, Rashaun.... | 5  | 12  | .417  |

| FREE THROW ATTEMPTS  | G | Att | Att/G |
|----------------------|---|-----|-------|
| PLAISTED, Trent..... | 6 | 45  | 7.5   |
| BALDERSON, Jimmy.... | 6 | 27  | 4.5   |
| REICHNER, Brock..... | 6 | 12  | 2.0   |
| BROADUS, Rashaun.... | 6 | 12  | 2.0   |
| DAWES, Derek.....    | 4 | 10  | 2.5   |

| FREE THROWS MADE     | G | Made | Made/G |
|----------------------|---|------|--------|
| PLAISTED, Trent..... | 6 | 29   | 4.8    |
| BALDERSON, Jimmy.... | 6 | 20   | 3.3    |
| MALAMAN, Fernando... | 6 | 5    | 0.8    |
| BROADUS, Rashaun.... | 6 | 5    | 0.8    |
| REICHNER, Brock..... | 6 | 8    | 1.3    |

| POINTS               | G | Pts | Pts/G |
|----------------------|---|-----|-------|
| PLAISTED, Trent..... | 6 | 95  | 15.8  |
| BALDERSON, Jimmy.... | 6 | 77  | 12.8  |
| MALAMAN, Fernando... | 6 | 57  | 9.5   |
| REICHNER, Brock..... | 6 | 50  | 8.3   |
| BROADUS, Rashaun.... | 6 | 47  | 7.8   |
| YOUNG, Keena.....    | 6 | 29  | 4.8   |
| CUMMARD, Lee.....    | 6 | 29  | 4.8   |
| ROSE, Mike.....      | 6 | 26  | 4.3   |
| EMERY, Jackson.....  | 6 | 24  | 4.0   |
| AINGE, Austin.....   | 6 | 20  | 3.3   |
| DAWES, Derek.....    | 4 | 20  | 5.0   |
| BURGESS, David.....  | 3 | 2   | 0.7   |

| POINTS AVERAGE       | G | Pts | Avg/G |
|----------------------|---|-----|-------|
| PLAISTED, Trent..... | 6 | 95  | 15.8  |
| BALDERSON, Jimmy.... | 6 | 77  | 12.8  |
| MALAMAN, Fernando... | 6 | 57  | 9.5   |
| REICHNER, Brock..... | 6 | 50  | 8.3   |
| BROADUS, Rashaun.... | 6 | 47  | 7.8   |
| DAWES, Derek.....    | 4 | 20  | 5.0   |
| YOUNG, Keena.....    | 6 | 29  | 4.8   |
| CUMMARD, Lee.....    | 6 | 29  | 4.8   |
| ROSE, Mike.....      | 6 | 26  | 4.3   |
| EMERY, Jackson.....  | 6 | 24  | 4.0   |
| AINGE, Austin.....   | 6 | 20  | 3.3   |
| ODJEGBA, Jermaine... | 2 | 2   | 1.0   |

2005-06 BYU Basketball  
 BYU Cougars Category Leaders (as of Dec 07, 2005)  
 All games

| REBOUNDS             | G | Reb | Reb/G |
|----------------------|---|-----|-------|
| PLAISTED, Trent..... | 6 | 35  | 5.8   |
| YOUNG, Keena.....    | 6 | 27  | 4.5   |
| BROADUS, Rashaun.... | 6 | 25  | 4.2   |
| BALDERSON, Jimmy.... | 6 | 24  | 4.0   |
| MALAMAN, Fernando... | 6 | 23  | 3.8   |

| REBOUND AVERAGE      | G | Reb | Avg/G |
|----------------------|---|-----|-------|
| PLAISTED, Trent..... | 6 | 35  | 5.8   |
| YOUNG, Keena.....    | 6 | 27  | 4.5   |
| BROADUS, Rashaun.... | 6 | 25  | 4.2   |
| BALDERSON, Jimmy.... | 6 | 24  | 4.0   |
| MALAMAN, Fernando... | 6 | 23  | 3.8   |

| OFFENSIVE REBOUNDS   | G | No. | Avg/G |
|----------------------|---|-----|-------|
| PLAISTED, Trent..... | 6 | 14  | 2.3   |
| YOUNG, Keena.....    | 6 | 8   | 1.3   |
| BALDERSON, Jimmy.... | 6 | 7   | 1.2   |
| MALAMAN, Fernando... | 6 | 4   | 0.7   |
| DAWES, Derek.....    | 4 | 3   | 0.8   |
| CUMMARD, Lee.....    | 6 | 3   | 0.5   |

| DEFENSIVE REBOUNDS   | G | No. | Avg/G |
|----------------------|---|-----|-------|
| BROADUS, Rashaun.... | 6 | 24  | 4.0   |
| PLAISTED, Trent..... | 6 | 21  | 3.5   |
| MALAMAN, Fernando... | 6 | 19  | 3.2   |
| YOUNG, Keena.....    | 6 | 19  | 3.2   |
| BALDERSON, Jimmy.... | 6 | 17  | 2.8   |

| FOULS                | G | No. | Per/G |
|----------------------|---|-----|-------|
| PLAISTED, Trent..... | 6 | 20  | 3.3   |
| BALDERSON, Jimmy.... | 6 | 18  | 3.0   |
| MALAMAN, Fernando... | 6 | 14  | 2.3   |
| YOUNG, Keena.....    | 6 | 13  | 2.2   |
| BROADUS, Rashaun.... | 6 | 12  | 2.0   |

| FOULOUTS             | G | No. |
|----------------------|---|-----|
| PLAISTED, Trent..... | 6 | 1   |
| BALDERSON, Jimmy.... | 6 | 1   |

| ASSISTS              | G | No. | A/G |
|----------------------|---|-----|-----|
| BROADUS, Rashaun.... | 6 | 31  | 5.2 |
| AINGE, Austin.....   | 6 | 20  | 3.3 |
| BALDERSON, Jimmy.... | 6 | 12  | 2.0 |
| REICHNER, Brock..... | 6 | 11  | 1.8 |
| CUMMARD, Lee.....    | 6 | 8   | 1.3 |

| STEALS               | G | No. | S/G |
|----------------------|---|-----|-----|
| MALAMAN, Fernando... | 6 | 8   | 1.3 |
| BROADUS, Rashaun.... | 6 | 5   | 0.8 |
| REICHNER, Brock..... | 6 | 5   | 0.8 |
| BALDERSON, Jimmy.... | 6 | 4   | 0.7 |
| YOUNG, Keena.....    | 6 | 3   | 0.5 |
| DAWES, Derek.....    | 4 | 3   | 0.8 |
| PLAISTED, Trent..... | 6 | 3   | 0.5 |

| BLOCKED SHOTS        | G | No. | Blk/G |
|----------------------|---|-----|-------|
| PLAISTED, Trent..... | 6 | 6   | 1.0   |
| MALAMAN, Fernando... | 6 | 5   | 0.8   |
| DAWES, Derek.....    | 4 | 2   | 0.5   |
| CUMMARD, Lee.....    | 6 | 2   | 0.3   |
| YOUNG, Keena.....    | 6 | 2   | 0.3   |

| MINUTES              | G | No. | Min/G |
|----------------------|---|-----|-------|
| BROADUS, Rashaun.... | 6 | 164 | 27.3  |
| MALAMAN, Fernando... | 6 | 161 | 26.8  |
| PLAISTED, Trent..... | 6 | 156 | 26.0  |
| BALDERSON, Jimmy.... | 6 | 154 | 25.7  |
| REICHNER, Brock..... | 6 | 109 | 18.2  |

| TURNOVERS            | G | No. | TO/G |
|----------------------|---|-----|------|
| PLAISTED, Trent..... | 6 | 18  | 3.0  |
| BROADUS, Rashaun.... | 6 | 16  | 2.7  |
| BALDERSON, Jimmy.... | 6 | 13  | 2.2  |
| REICHNER, Brock..... | 6 | 9   | 1.5  |
| AINGE, Austin.....   | 6 | 8   | 1.3  |



2005-06 BYU Basketball  
 BYU Cougars Overall/Conference Statistics (as of Dec 07, 2005)  
 All games

| SUMMARY              | OVERALL STATISTICS |       |      |      |       |      |      |     |     |       | CONFERENCE STATISTICS |       |      |      |      |     |     |     |     |       |     |
|----------------------|--------------------|-------|------|------|-------|------|------|-----|-----|-------|-----------------------|-------|------|------|------|-----|-----|-----|-----|-------|-----|
|                      | GP-GS              | Min/G | FG%  | 3PT% | FT%   | R/G  | A/G  | STL | BLK | PTS/G | GP-GS                 | Min/G | FG%  | 3PT% | FT%  | R/G | A/G | STL | BLK | PTS/G |     |
| PLAISTED, Trent..... | 6-6                | 26.0  | .589 | .000 | .644  | 5.8  | 0.5  | 3   | 6   | 15.8  |                       |       |      |      |      |     |     |     |     |       |     |
| BALDERSON, Jimmy.... | 6-6                | 25.7  | .456 | .227 | .741  | 4.0  | 2.0  | 4   | 1   | 12.8  |                       |       |      |      |      |     |     |     |     |       |     |
| MALAMAN, Fernando... | 6-6                | 26.8  | .647 | .727 | .833  | 3.8  | 1.0  | 8   | 5   | 9.5   |                       |       |      |      |      |     |     |     |     |       |     |
| REICHNER, Brock..... | 6-5                | 18.2  | .444 | .526 | .667  | 1.8  | 1.8  | 5   | 0   | 8.3   |                       |       |      |      |      |     |     |     |     |       |     |
| BROADUS, Rashaun.... | 6-6                | 27.3  | .391 | .400 | .417  | 4.2  | 5.2  | 5   | 1   | 7.8   |                       |       |      |      |      |     |     |     |     |       |     |
| DAWES, Derek.....    | 4-0                | 12.3  | .750 | .000 | .800  | 1.5  | 0.8  | 3   | 2   | 5.0   |                       |       |      |      |      |     |     |     |     |       |     |
| CUMMARD, Lee.....    | 6-0                | 13.8  | .476 | .556 | .571  | 1.7  | 1.3  | 1   | 2   | 4.8   |                       |       |      |      |      |     |     |     |     |       |     |
| YOUNG, Keena.....    | 6-0                | 16.0  | .500 | .000 | .833  | 4.5  | 1.0  | 3   | 2   | 4.8   |                       |       |      |      |      |     |     |     |     |       |     |
| ROSE, Mike.....      | 6-0                | 11.2  | .308 | .375 | 1.000 | 1.2  | 0.3  | 2   | 0   | 4.3   |                       |       |      |      |      |     |     |     |     |       |     |
| EMERY, Jackson.....  | 6-0                | 9.5   | .471 | .364 | 1.000 | 0.3  | 0.0  | 1   | 0   | 4.0   |                       |       |      |      |      |     |     |     |     |       |     |
| AINGE, Austin.....   | 6-1                | 13.8  | .500 | .500 | .500  | 2.0  | 3.3  | 2   | 0   | 3.3   |                       |       |      |      |      |     |     |     |     |       |     |
| ODJEGBA, Jermaine... | 2-0                | 3.0   | .000 | .000 | 1.000 | 1.0  | 0.0  | 0   | 0   | 1.0   |                       |       |      |      |      |     |     |     |     |       |     |
| BURGESS, David.....  | 3-0                | 5.0   | .167 | .000 | .000  | 1.7  | 0.0  | 0   | 1   | 0.7   |                       |       |      |      |      |     |     |     |     |       |     |
| Total.....           | 6                  |       | .484 | .426 | .691  | 35.2 | 17.0 | 37  | 20  | 79.7  | 0                     |       | .000 | .000 | .000 | 0.0 | 0.0 | 0   | 0   | 0.0   | 0.0 |
| Opponents.....       | 6                  |       | .438 | .353 | .744  | 32.8 | 14.7 | 43  | 14  | 72.8  | 0                     |       | .000 | .000 | .000 | 0.0 | 0.0 | 0   | 0   | 0.0   | 0.0 |

| SCORING              | OVERALL STATISTICS |      |         |      |        |       |     |       | CONFERENCE STATISTICS |      |         |      |        |      |     |       |
|----------------------|--------------------|------|---------|------|--------|-------|-----|-------|-----------------------|------|---------|------|--------|------|-----|-------|
|                      | FG-FGA             | FG%  | 3FG-FGA | 3PT% | FT-FTA | FT%   | PTS | PTS/G | FG-FGA                | FG%  | 3FG-FGA | 3PT% | FT-FTA | FT%  | PTS | PTS/G |
| PLAISTED, Trent..... | 33-56              | .589 | 0-0     | .000 | 29-45  | .644  | 95  | 15.8  |                       |      |         |      |        |      |     |       |
| BALDERSON, Jimmy.... | 26-57              | .456 | 5-22    | .227 | 20-27  | .741  | 77  | 12.8  |                       |      |         |      |        |      |     |       |
| MALAMAN, Fernando... | 22-34              | .647 | 8-11    | .727 | 5-6    | .833  | 57  | 9.5   |                       |      |         |      |        |      |     |       |
| REICHNER, Brock..... | 16-36              | .444 | 10-19   | .526 | 8-12   | .667  | 50  | 8.3   |                       |      |         |      |        |      |     |       |
| BROADUS, Rashaun.... | 18-46              | .391 | 6-15    | .400 | 5-12   | .417  | 47  | 7.8   |                       |      |         |      |        |      |     |       |
| DAWES, Derek.....    | 6-8                | .750 | 0-0     | .000 | 8-10   | .800  | 20  | 5.0   |                       |      |         |      |        |      |     |       |
| CUMMARD, Lee.....    | 10-21              | .476 | 5-9     | .556 | 4-7    | .571  | 29  | 4.8   |                       |      |         |      |        |      |     |       |
| YOUNG, Keena.....    | 12-24              | .500 | 0-1     | .000 | 5-6    | .833  | 29  | 4.8   |                       |      |         |      |        |      |     |       |
| ROSE, Mike.....      | 8-26               | .308 | 6-16    | .375 | 4-4    | 1.000 | 26  | 4.3   |                       |      |         |      |        |      |     |       |
| EMERY, Jackson.....  | 8-17               | .471 | 4-11    | .364 | 4-4    | 1.000 | 24  | 4.0   |                       |      |         |      |        |      |     |       |
| AINGE, Austin.....   | 8-16               | .500 | 2-4     | .500 | 2-4    | .500  | 20  | 3.3   |                       |      |         |      |        |      |     |       |
| ODJEGBA, Jermaine... | 0-0                | .000 | 0-0     | .000 | 2-2    | 1.000 | 2   | 1.0   |                       |      |         |      |        |      |     |       |
| BURGESS, David.....  | 1-6                | .167 | 0-0     | .000 | 0-0    | .000  | 2   | 0.7   |                       |      |         |      |        |      |     |       |
| Total.....           | 168-347            | .484 | 46-108  | .426 | 96-139 | .691  | 478 | 79.7  | 0-0                   | .000 | 0-0     | .000 | 0-0    | .000 | 0   | 0.0   |
| Opponents.....       | 151-345            | .438 | 36-102  | .353 | 99-133 | .744  | 437 | 72.8  | 0-0                   | .000 | 0-0     | .000 | 0-0    | .000 | 0   | 0.0   |

| TOTALS               | OVERALL STATISTICS |       |       |     |    |     |    |      |    |     | CONFERENCE STATISTICS |       |       |    |    |   |    |      |    |     |
|----------------------|--------------------|-------|-------|-----|----|-----|----|------|----|-----|-----------------------|-------|-------|----|----|---|----|------|----|-----|
|                      | O-REB              | D-REB | TOTAL | PF  | FO | A   | TO | A/TO | Hi | Pts | O-REB                 | D-REB | TOTAL | PF | FO | A | TO | A/TO | Hi | Pts |
| PLAISTED, Trent..... | 14                 | 21    | 35    | 20  | 1  | 3   | 18 | 0.2  | 20 |     |                       |       |       |    |    |   |    |      |    |     |
| BALDERSON, Jimmy.... | 7                  | 17    | 24    | 18  | 1  | 12  | 13 | 0.9  | 21 |     |                       |       |       |    |    |   |    |      |    |     |
| MALAMAN, Fernando... | 4                  | 19    | 23    | 14  | 0  | 6   | 7  | 0.9  | 17 |     |                       |       |       |    |    |   |    |      |    |     |
| REICHNER, Brock..... | 1                  | 10    | 11    | 8   | 0  | 11  | 9  | 1.2  | 18 |     |                       |       |       |    |    |   |    |      |    |     |
| BROADUS, Rashaun.... | 1                  | 24    | 25    | 12  | 0  | 31  | 16 | 1.9  | 11 |     |                       |       |       |    |    |   |    |      |    |     |
| DAWES, Derek.....    | 3                  | 3     | 6     | 6   | 0  | 3   | 2  | 1.5  | 8  |     |                       |       |       |    |    |   |    |      |    |     |
| CUMMARD, Lee.....    | 3                  | 7     | 10    | 10  | 0  | 8   | 4  | 2.0  | 9  |     |                       |       |       |    |    |   |    |      |    |     |
| YOUNG, Keena.....    | 8                  | 19    | 27    | 13  | 0  | 6   | 7  | 0.9  | 10 |     |                       |       |       |    |    |   |    |      |    |     |
| ROSE, Mike.....      | 2                  | 5     | 7     | 5   | 0  | 2   | 4  | 0.5  | 12 |     |                       |       |       |    |    |   |    |      |    |     |
| EMERY, Jackson.....  | 2                  | 0     | 2     | 10  | 0  | 0   | 5  | 0.0  | 10 |     |                       |       |       |    |    |   |    |      |    |     |
| AINGE, Austin.....   | 1                  | 11    | 12    | 2   | 0  | 20  | 8  | 2.5  | 8  |     |                       |       |       |    |    |   |    |      |    |     |
| ODJEGBA, Jermaine... | 0                  | 2     | 2     | 2   | 0  | 0   | 2  | 0.0  | 2  |     |                       |       |       |    |    |   |    |      |    |     |
| BURGESS, David.....  | 2                  | 3     | 5     | 2   | 0  | 0   | 1  | 0.0  | 2  |     |                       |       |       |    |    |   |    |      |    |     |
| Total.....           | 59                 | 152   | 211   | 122 | 2  | 102 | 96 | 1.1  | 97 | 0   | 0                     | 0     | 0     | 0  | 0  | 0 | 0  | 0.0  | 0  | 0   |
| Opponents.....       | 58                 | 139   | 197   | 118 | -  | 88  | 95 | 0.9  | 83 | 0   | 0                     | 0     | 0     | 0  | 0  | 0 | 0  | 0.0  | 0  | 0   |

2005-06 BYU Basketball  
 BYU Cougars Team Game-by-Game (as of Dec 07, 2005)  
 All games

TEAM STATISTICS

| Opponent            | Date     | Score | W/L | ---TOTAL--- |      | --3-PTRS-- |      | FT-FTA |      | Pct |     | ----REBOUNDS---- |      |     |     | PF | A  | TO | Blk | Stl  | Pts---Avg |
|---------------------|----------|-------|-----|-------------|------|------------|------|--------|------|-----|-----|------------------|------|-----|-----|----|----|----|-----|------|-----------|
|                     |          |       |     | FG-FGA      | Pct  | 3FG-FGA    | Pct  | Off    | Def  | Tot | Avg |                  |      |     |     |    |    |    |     |      |           |
| LMU                 | 11-18-05 | 71-83 | L   | 25-60       | .417 | 7-17       | .412 | 14-17  | .824 | 10  | 24  | 34               | 34.0 | 23  | 14  | 19 | 5  | 4  | 71  | 71.0 |           |
| at Washington State | 11/22/05 | 76-68 | W   | 26-47       | .553 | 9-18       | .500 | 15-23  | .652 | 5   | 17  | 22               | 28.0 | 20  | 14  | 14 | 0  | 10 | 76  | 73.5 |           |
| SUU                 | 11-26-05 | 86-61 | W   | 31-53       | .585 | 11-17      | .647 | 13-22  | .591 | 7   | 29  | 36               | 30.7 | 22  | 22  | 13 | 3  | 7  | 86  | 77.7 |           |
| vs Lamar University | 11-30-05 | 97-74 | W   | 35-62       | .565 | 7-14       | .500 | 20-22  | .909 | 9   | 29  | 38               | 32.5 | 16  | 22  | 20 | 2  | 6  | 97  | 82.5 |           |
| at USC              | 12/03/05 | 68-74 | L   | 22-59       | .373 | 6-23       | .261 | 18-28  | .643 | 16  | 25  | 41               | 34.2 | 26  | 12  | 17 | 3  | 6  | 68  | 79.6 |           |
| BOISE STATE BRONCOS | 12/07/05 | 80-77 | W   | 29-66       | .439 | 6-19       | .316 | 16-27  | .593 | 12  | 28  | 40               | 35.2 | 15  | 18  | 13 | 7  | 4  | 80  | 79.7 |           |
| BYU Cougars         |          | 478   |     | 168-347     | .484 | 46-108     | .426 | 96-139 | .691 | 59  | 152 | 211              | 35.2 | 122 | 102 | 96 | 20 | 37 | 478 | 79.7 |           |
| Opponents           |          | 437   |     | 151-345     | .438 | 36-102     | .353 | 99-133 | .744 | 58  | 139 | 197              | 32.8 | 118 | 88  | 95 | 14 | 43 | 437 | 72.8 |           |

Games played: 6  
 Points/game: 79.7  
 FG Pct: 48.4  
 3FG Pct: 42.6  
 FT Pct: 69.1

Rebounds/game: 35.2  
 Assists/game: 17.0  
 Turnovers/game: 16.0  
 Assist/turnover ratio: 1.1  
 Steals/game: 6.2  
 Blocks/game: 3.3

2005-06 BYU Basketball  
 BYU Cougars Opponent Game-by-Game (as of Dec 07, 2005)  
 All games

OPPONENT STATISTICS

| Opponent            | Date     | Score | W/L | ---TOTAL--- |      | --3-PTRS-- |      | FT-FTA |      | Pct |     | ----REBOUNDS---- |      |     |     | PF | A  | TO | Blk | Stl  | Pts---Avg |
|---------------------|----------|-------|-----|-------------|------|------------|------|--------|------|-----|-----|------------------|------|-----|-----|----|----|----|-----|------|-----------|
|                     |          |       |     | FG-FGA      | Pct  | 3FG-FGA    | Pct  | Off    | Def  | Tot | Avg |                  |      |     |     |    |    |    |     |      |           |
| LMU                 | 11-18-05 | 71-83 | L   | 31-65       | .477 | 3-13       | .231 | 18-24  | .750 | 14  | 26  | 40               | 40.0 | 15  | 15  | 15 | 4  | 8  | 83  | 83.0 |           |
| at Washington State | 11/22/05 | 76-68 | W   | 23-42       | .548 | 7-19       | .368 | 15-21  | .714 | 4   | 19  | 23               | 31.5 | 21  | 13  | 17 | 1  | 4  | 68  | 75.5 |           |
| SUU                 | 11-26-05 | 86-61 | W   | 15-49       | .306 | 9-20       | .450 | 22-31  | .710 | 8   | 20  | 28               | 30.3 | 20  | 10  | 13 | 1  | 8  | 61  | 70.7 |           |
| vs Lamar University | 11-30-05 | 97-74 | W   | 29-71       | .408 | 4-18       | .222 | 12-18  | .667 | 16  | 18  | 34               | 31.3 | 20  | 19  | 19 | 6  | 11 | 74  | 71.5 |           |
| at USC              | 12/03/05 | 68-74 | L   | 22-54       | .407 | 6-15       | .400 | 24-29  | .828 | 10  | 22  | 32               | 31.4 | 22  | 12  | 16 | 1  | 8  | 74  | 72.0 |           |
| BOISE STATE BRONCOS | 12/07/05 | 80-77 | W   | 31-64       | .484 | 7-17       | .412 | 8-10   | .800 | 6   | 34  | 40               | 32.8 | 20  | 19  | 15 | 1  | 4  | 77  | 72.8 |           |
| -----               |          |       |     |             |      |            |      |        |      |     |     |                  |      |     |     |    |    |    |     |      |           |
| Opponents           |          | 437   |     | 151-345     | .438 | 36-102     | .353 | 99-133 | .744 | 58  | 139 | 197              | 32.8 | 118 | 88  | 95 | 14 | 43 | 437 | 72.8 |           |
| BYU Cougars         |          | 478   |     | 168-347     | .484 | 46-108     | .426 | 96-139 | .691 | 59  | 152 | 211              | 35.2 | 122 | 102 | 96 | 20 | 37 | 478 | 79.7 |           |

Games played: 6  
 Points/game: 72.8  
 FG Pct: 43.8  
 3FG Pct: 35.3  
 FT Pct: 74.4

Rebounds/game: 32.8  
 Assists/game: 14.7  
 Turnovers/game: 15.8  
 Assist/turnover ratio: 0.9  
 Steals/game: 7.2  
 Blocks/game: 2.3

2005-06 BYU Basketball  
 BYU Cougars Game-by-Game Points-Rebounds-Assists (as of Dec 07, 2005)  
 All games

| Opponent            | Date     | Score | WL | 01<br>BROADUS,R | 02<br>ROSE,MIKE | 03<br>YOUNG,KEE | 04<br>EMERY,JAC | 11<br>REICHNER, | 13<br>AINGE,AUS | 15<br>MALAMAN,F | 23<br>BALDERSON | 30<br>CUMMARD,L |
|---------------------|----------|-------|----|-----------------|-----------------|-----------------|-----------------|-----------------|-----------------|-----------------|-----------------|-----------------|
| LMU                 | 11-18-05 | 71-83 | L  | 9- 1- 3         | 12- 2- 0        | 0- 3- 1         | 0- 0- 0         | 0- 0- 1         | 4- 3- 3         | 6- 4- 4         | 18- 7- 2        | 3- 0- 0         |
| at Washington State | 11/22/05 | 76-68 | W  | 6- 2- 5         | 0- 1- 0         | 8- 4- 0         | 3- 0- 0         | 18- 1- 0        | 2- 1- 5         | 14- 5- 1        | 12- 4- 1        | 3- 1- 1         |
| SUU                 | 11-26-05 | 86-61 | W  | 11- 3- 3        | 5- 2- 2         | 4- 5- 0         | 10- 0- 0        | 11- 4- 1        | 6- 4- 8         | 9- 4- 0         | 3- 2- 3         | 9- 4- 2         |
| vs Lamar University | 11-30-05 | 97-74 | W  | 7- 4- 9         | 3- 2- 0         | 10- 8- 3        | 2- 1- 0         | 7- 1- 3         | 8- 3- 2         | 4- 1- 0         | 21- 2- 1        | 9- 3- 3         |
| at USC              | 12/03/05 | 68-74 | L  | 3- 8- 5         | 3- 0- 0         | 3- 6- 1         | 9- 1- 0         | 2- 1- 1         | 0- 0- 2         | 7- 4- 0         | 13- 6- 1        | 5- 2- 1         |
| BOISE STATE BRONCOS | 12/07/05 | 80-77 | W  | 11- 7- 6        | 3- 0- 0         | 4- 1- 1         | 0- 0- 0         | 12- 4- 5        | 0- 1- 0         | 17- 5- 1        | 10- 3- 4        | 0- 0- 1         |

| Opponent            | Date     | Score | WL | 34<br>BURGESS,D | 41<br>ODJEGBA,J | 43<br>DAWES,DER | 44<br>PLAISTED, |
|---------------------|----------|-------|----|-----------------|-----------------|-----------------|-----------------|
| LMU                 | 11-18-05 | 71-83 | L  | 2- 3- 0         | DNP             | DNP             | 17- 4- 0        |
| at Washington State | 11/22/05 | 76-68 | W  | DNP             | DNP             | DNP             | 10- 1- 1        |
| SUU                 | 11-26-05 | 86-61 | W  | 0- 0- 0         | 0- 2- 0         | 5- 1- 2         | 13- 4- 1        |
| vs Lamar University | 11-30-05 | 97-74 | W  | 0- 2- 0         | 2- 0- 0         | 8- 1- 1         | 16- 7- 0        |
| at USC              | 12/03/05 | 68-74 | L  | DNP             | DNP             | 3- 2- 0         | 20- 9- 1        |
| BOISE STATE BRONCOS | 12/07/05 | 80-77 | W  | DNP             | DNP             | 4- 2- 0         | 19-10- 0        |

2005-06 BYU Basketball  
 BYU Cougars Game-by-Game Highs (as of Dec 07, 2005)  
 All games

| Opponent            | Date     | Score | WL | POINTS           | REBOUNDS         | ASSISTS                          | STEALS  | BLOCKED SHOTS   |
|---------------------|----------|-------|----|------------------|------------------|----------------------------------|---|---|
| LMU                 | 11-18-05 | 71-83 | L  | 18-BALDERSON, Ji | 7-BALDERSON, Ji  | 4-MALAMAN, Fern                  | 2-BROADUS, Rash   | 1-BURGESS, Davi<br>MALAMAN, Fern<br>BALDERSON, Ji<br>CUMMARD, Lee<br>YOUNG, Keena |
| at Washington State | 11/22/05 | 76-68 | W  | 18-REICHNER, Bro | 5-MALAMAN, Fern  | 5-AINGE, Austin<br>BROADUS, Rash | 3-REICHNER, Bro<br>MALAMAN, Fern  | None  |
| SUU                 | 11-26-05 | 86-61 | W  | 13-PLAISTED, Tre | 5-YOUNG, Keena   | 8-AINGE, Austin                  | 2-YOUNG, Keena<br>AINGE, Austin   | 2-PLAISTED, Tre   |
| vs Lamar University | 11-30-05 | 97-74 | W  | 21-BALDERSON, Ji | 8-YOUNG, Keena   | 9-BROADUS, Rash                  | 2-MALAMAN, Fern   | 2-PLAISTED, Tre   |
| at USC              | 12/03/05 | 68-74 | L  | 20-PLAISTED, Tre | 9-PLAISTED, Tre  | 5-BROADUS, Rash                  | 1-ROSE, Mike<br>REICHNER, Bro<br>EMERY, Jackso<br>DAWES, Derek<br>MALAMAN, Fern<br>YOUNG, Keena | 1-MALAMAN, Fern<br>YOUNG, Keena<br>PLAISTED, Tre                                  |
| BOISE STATE BRONCOS | 12/07/05 | 80-77 | W  | 19-PLAISTED, Tre | 10-PLAISTED, Tre | 6-BROADUS, Rash                  | 1-BALDERSON, Ji<br>REICHNER, Bro<br>DAWES, Derek<br>ROSE, Mike                                  | 3-MALAMAN, Fern   |

2005-06 BYU Basketball  
 BYU Cougars High/Low Analysis (as of Dec 07, 2005)  
 All games

BYU Cougars - TEAM GAME HIGHS

|                            |              |                                   |
|----------------------------|--------------|-----------------------------------|
| POINTS.....                | 97           | vs Lamar University (11-30-05)    |
|                            | 86           | vs SUU (11-26-05)                 |
|                            | 80           | vs Boise State Broncos (12/07/05) |
|                            | 76           | at Washington State (11/22/05)    |
|                            | 71           | vs LMU (11-18-05)                 |
| FIELD GOALS MADE.....      | 35           | vs Lamar University (11-30-05)    |
|                            | 31           | vs SUU (11-26-05)                 |
| FIELD GOAL ATTEMPTS.....   | 66           | vs Boise State Broncos (12/07/05) |
|                            | 62           | vs Lamar University (11-30-05)    |
| FIELD GOAL PERCENTAGE..... | .585 (31-53) | vs SUU (11-26-05)                 |
|                            | .565 (35-62) | vs Lamar University (11-30-05)    |
| 3 PT FIELD GOALS MADE..... | 11           | vs SUU (11-26-05)                 |
|                            | 9            | at Washington State (11/22/05)    |
| 3 PT FG ATTEMPTS.....      | 23           | at USC (12/03/05)                 |
|                            | 19           | vs Boise State Broncos (12/07/05) |
| 3 PT FG PERCENTAGE.....    | .647 (11-17) | vs SUU (11-26-05)                 |
|                            | .500 ( 9-18) | at Washington State (11/22/05)    |
|                            | .500 ( 7-14) | vs Lamar University (11-30-05)    |
| FREE THROWS MADE.....      | 20           | vs Lamar University (11-30-05)    |
|                            | 18           | at USC (12/03/05)                 |
| FREE THROW ATTEMPTS.....   | 28           | at USC (12/03/05)                 |
|                            | 27           | vs Boise State Broncos (12/07/05) |
| FREE THROW PERCENTAGE..... | .909 (20-22) | vs Lamar University (11-30-05)    |
|                            | .824 (14-17) | vs LMU (11-18-05)                 |
| REBOUNDS.....              | 41           | at USC (12/03/05)                 |
|                            | 40           | vs Boise State Broncos (12/07/05) |
| ASSISTS.....               | 22           | vs Lamar University (11-30-05)    |
|                            | 22           | vs SUU (11-26-05)                 |
| STEALS.....                | 10           | at Washington State (11/22/05)    |
|                            | 7            | vs SUU (11-26-05)                 |
| BLOCKED SHOTS.....         | 7            | vs Boise State Broncos (12/07/05) |
|                            | 5            | vs LMU (11-18-05)                 |
| TURNOVERS.....             | 20           | vs Lamar University (11-30-05)    |
|                            | 19           | vs LMU (11-18-05)                 |
| FOULS.....                 | 26           | at USC (12/03/05)                 |
|                            | 23           | vs LMU (11-18-05)                 |



2005-06 BYU Basketball  
 BYU Cougars High/Low Analysis (as of Dec 07, 2005)  
 All games

Opponent - GAME HIGHS

|                            |              |                                   |
|----------------------------|--------------|-----------------------------------|
| POINTS.....                | 83           | vs LMU (11-18-05)                 |
|                            | 77           | vs Boise State Broncos (12/07/05) |
|                            | 74           | at USC (12/03/05)                 |
|                            | 74           | vs Lamar University (11-30-05)    |
|                            | 68           | at Washington State (11/22/05)    |
| FIELD GOALS MADE.....      | 31           | vs Boise State Broncos (12/07/05) |
|                            | 31           | vs LMU (11-18-05)                 |
| FIELD GOAL ATTEMPTS.....   | 71           | vs Lamar University (11-30-05)    |
|                            | 65           | vs LMU (11-18-05)                 |
| FIELD GOAL PERCENTAGE..... | .548 (23-42) | at Washington State (11/22/05)    |
|                            | .484 (31-64) | vs Boise State Broncos (12/07/05) |
| 3 PT FIELD GOALS MADE..... | 9            | vs SUU (11-26-05)                 |
|                            | 7            | vs Boise State Broncos (12/07/05) |
|                            | 7            | at Washington State (11/22/05)    |
| 3 PT FG ATTEMPTS.....      | 20           | vs SUU (11-26-05)                 |
|                            | 19           | at Washington State (11/22/05)    |
| 3 PT FG PERCENTAGE.....    | .450 ( 9-20) | vs SUU (11-26-05)                 |
|                            | .412 ( 7-17) | vs Boise State Broncos (12/07/05) |
| FREE THROWS MADE.....      | 24           | at USC (12/03/05)                 |
|                            | 22           | vs SUU (11-26-05)                 |
| FREE THROW ATTEMPTS.....   | 31           | vs SUU (11-26-05)                 |
|                            | 29           | at USC (12/03/05)                 |
| FREE THROW PERCENTAGE..... | .828 (24-29) | at USC (12/03/05)                 |
|                            | .800 ( 8-10) | vs Boise State Broncos (12/07/05) |
| REBOUNDS.....              | 40           | vs Boise State Broncos (12/07/05) |
|                            | 40           | vs LMU (11-18-05)                 |
| ASSISTS.....               | 19           | vs Boise State Broncos (12/07/05) |
|                            | 19           | vs Lamar University (11-30-05)    |
| STEALS.....                | 11           | vs Lamar University (11-30-05)    |
|                            | 8            | at USC (12/03/05)                 |
|                            | 8            | vs SUU (11-26-05)                 |
|                            | 8            | vs LMU (11-18-05)                 |
| BLOCKED SHOTS.....         | 6            | vs Lamar University (11-30-05)    |
|                            | 4            | vs LMU (11-18-05)                 |
| TURNOVERS.....             | 19           | vs Lamar University (11-30-05)    |
|                            | 17           | at Washington State (11/22/05)    |
| FOULS.....                 | 22           | at USC (12/03/05)                 |
|                            | 21           | at Washington State (11/22/05)    |

2005-06 BYU Basketball  
 BYU Cougars High/Low Analysis (as of Dec 07, 2005)  
 All games

BYU Cougars - GAME LOWS

|                            |              |                                   |
|----------------------------|--------------|-----------------------------------|
| POINTS.....                | 68           | at USC (12/03/05)                 |
|                            | 71           | vs LMU (11-18-05)                 |
|                            | 76           | at Washington State (11/22/05)    |
|                            | 80           | vs Boise State Broncos (12/07/05) |
|                            | 86           | vs SUU (11-26-05)                 |
| FIELD GOALS MADE.....      | 22           | at USC (12/03/05)                 |
|                            | 25           | vs LMU (11-18-05)                 |
| FIELD GOAL ATTEMPTS.....   | 47           | at Washington State (11/22/05)    |
|                            | 53           | vs SUU (11-26-05)                 |
| FIELD GOAL PERCENTAGE..... | .373 (22-59) | at USC (12/03/05)                 |
|                            | .417 (25-60) | vs LMU (11-18-05)                 |
| 3 PT FIELD GOALS MADE..... | 6            | at USC (12/03/05)                 |
|                            | 6            | vs Boise State Broncos (12/07/05) |
| 3 PT FG ATTEMPTS.....      | 14           | vs Lamar University (11-30-05)    |
|                            | 17           | vs LMU (11-18-05)                 |
|                            | 17           | vs SUU (11-26-05)                 |
| 3 PT FG PERCENTAGE.....    | .261 ( 6-23) | at USC (12/03/05)                 |
|                            | .316 ( 6-19) | vs Boise State Broncos (12/07/05) |
| FREE THROWS MADE.....      | 13           | vs SUU (11-26-05)                 |
|                            | 14           | vs LMU (11-18-05)                 |
| FREE THROW ATTEMPTS.....   | 17           | vs LMU (11-18-05)                 |
|                            | 22           | vs SUU (11-26-05)                 |
|                            | 22           | vs Lamar University (11-30-05)    |
| FREE THROW PERCENTAGE..... | .591 (13-22) | vs SUU (11-26-05)                 |
|                            | .593 (16-27) | vs Boise State Broncos (12/07/05) |
| REBOUNDS.....              | 22           | at Washington State (11/22/05)    |
|                            | 34           | vs LMU (11-18-05)                 |
| ASSISTS.....               | 12           | at USC (12/03/05)                 |
|                            | 14           | vs LMU (11-18-05)                 |
|                            | 14           | at Washington State (11/22/05)    |
| STEALS.....                | 4            | vs LMU (11-18-05)                 |
|                            | 4            | vs Boise State Broncos (12/07/05) |
| BLOCKED SHOTS.....         | 0            | at Washington State (11/22/05)    |
|                            | 2            | vs Lamar University (11-30-05)    |
| TURNOVERS.....             | 13           | vs SUU (11-26-05)                 |
|                            | 13           | vs Boise State Broncos (12/07/05) |
| FOULS.....                 | 15           | vs Boise State Broncos (12/07/05) |
|                            | 16           | vs Lamar University (11-30-05)    |

2005-06 BYU Basketball  
 BYU Cougars High/Low Analysis (as of Dec 07, 2005)  
 All games

Opponent - GAME LOWS

|                            |              |                                   |
|----------------------------|--------------|-----------------------------------|
| POINTS.....                | 61           | vs SUU (11-26-05)                 |
|                            | 68           | at Washington State (11/22/05)    |
|                            | 74           | vs Lamar University (11-30-05)    |
|                            | 74           | at USC (12/03/05)                 |
|                            | 77           | vs Boise State Broncos (12/07/05) |
| FIELD GOALS MADE.....      | 15           | vs SUU (11-26-05)                 |
|                            | 22           | at USC (12/03/05)                 |
| FIELD GOAL ATTEMPTS.....   | 42           | at Washington State (11/22/05)    |
|                            | 49           | vs SUU (11-26-05)                 |
| FIELD GOAL PERCENTAGE..... | .306 (15-49) | vs SUU (11-26-05)                 |
|                            | .407 (22-54) | at USC (12/03/05)                 |
| 3 PT FIELD GOALS MADE..... | 3            | vs LMU (11-18-05)                 |
|                            | 4            | vs Lamar University (11-30-05)    |
| 3 PT FG ATTEMPTS.....      | 13           | vs LMU (11-18-05)                 |
|                            | 15           | at USC (12/03/05)                 |
| 3 PT FG PERCENTAGE.....    | .222 ( 4-18) | vs Lamar University (11-30-05)    |
|                            | .231 ( 3-13) | vs LMU (11-18-05)                 |
| FREE THROWS MADE.....      | 8            | vs Boise State Broncos (12/07/05) |
|                            | 12           | vs Lamar University (11-30-05)    |
| FREE THROW ATTEMPTS.....   | 10           | vs Boise State Broncos (12/07/05) |
|                            | 18           | vs Lamar University (11-30-05)    |
| FREE THROW PERCENTAGE..... | .667 (12-18) | vs Lamar University (11-30-05)    |
|                            | .710 (22-31) | vs SUU (11-26-05)                 |
| REBOUNDS.....              | 23           | at Washington State (11/22/05)    |
|                            | 28           | vs SUU (11-26-05)                 |
| ASSISTS.....               | 10           | vs SUU (11-26-05)                 |
|                            | 12           | at USC (12/03/05)                 |
| STEALS.....                | 4            | at Washington State (11/22/05)    |
|                            | 4            | vs Boise State Broncos (12/07/05) |
| BLOCKED SHOTS.....         | 1            | at Washington State (11/22/05)    |
|                            | 1            | vs SUU (11-26-05)                 |
|                            | 1            | at USC (12/03/05)                 |
|                            | 1            | vs Boise State Broncos (12/07/05) |
| TURNOVERS.....             | 13           | vs SUU (11-26-05)                 |
|                            | 15           | vs LMU (11-18-05)                 |
|                            | 15           | vs Boise State Broncos (12/07/05) |
| FOULS.....                 | 15           | vs LMU (11-18-05)                 |
|                            | 20           | vs SUU (11-26-05)                 |
|                            | 20           | vs Lamar University (11-30-05)    |
|                            | 20           | vs Boise State Broncos (12/07/05) |

2005-06 BYU Basketball  
 BYU Cougars High/Low Analysis (as of Dec 07, 2005)  
 All games

BYU Cougars - INDIVIDUAL GAME HIGHS

|                               |               |   |
|-------------------------------|---------------|---|
| POINTS.....                   | 21            | BALDERSON, Jimmy vs Lamar University (11-30-05)     |
|                               | 20            | PLAISTED, Trent at USC (12/03/05)                   |
|                               | 19            | PLAISTED, Trent vs Boise State Broncos (12/07/05)   |
|                               | 18            | REICHNER, Brock at Washington State (11/22/05)      |
|                               | 18            | BALDERSON, Jimmy vs LMU (11-18-05)                  |
| FIELD GOALS MADE.....         | 8             | PLAISTED, Trent at USC (12/03/05)                   |
|                               | 7             | MALAMAN, Fernando vs Boise State Broncos (12/07/05) |
|                               | 7             | PLAISTED, Trent vs Boise State Broncos (12/07/05)   |
|                               | 7             | BALDERSON, Jimmy vs Lamar University (11-30-05)     |
| FIELD GOAL ATT.....           | 13            | PLAISTED, Trent at USC (12/03/05)                   |
|                               | 13            | BROADUS, Rashaun vs LMU (11-18-05)                  |
|                               | 13            | BALDERSON, Jimmy vs LMU (11-18-05)                  |
| FG PCT (min 5 made).....      | .750 ( 6-8 )  | MALAMAN, Fernando at Washington State (11/22/05)    |
|                               | .750 ( 6-8 )  | PLAISTED, Trent vs LMU (11-18-05)                   |
| 3 PT FG MADE.....             | 3             | REICHNER, Brock vs Boise State Broncos (12/07/05)   |
|                               | 3             | BROADUS, Rashaun vs SUU (11-26-05)                  |
|                               | 3             | REICHNER, Brock vs SUU (11-26-05)                   |
|                               | 3             | REICHNER, Brock at Washington State (11/22/05)      |
| 3 PT FG ATTEMPTS.....         | 6             | REICHNER, Brock vs Boise State Broncos (12/07/05)   |
|                               | 6             | BALDERSON, Jimmy at USC (12/03/05)                  |
| 3-PT FG PCT (min 2 made)..... | 1.000 ( 3-3 ) | BROADUS, Rashaun vs SUU (11-26-05)                  |
|                               | .750 ( 3-4 )  | REICHNER, Brock vs SUU (11-26-05)                   |
| FREE THROWS MADE.....         | 6             | PLAISTED, Trent at Washington State (11/22/05)      |
|                               | 5             | PLAISTED, Trent vs Boise State Broncos (12/07/05)   |
|                               | 5             | BALDERSON, Jimmy vs Lamar University (11-30-05)     |
|                               | 5             | PLAISTED, Trent vs SUU (11-26-05)                   |
|                               | 5             | BALDERSON, Jimmy vs LMU (11-18-05)                  |
|                               | 5             | PLAISTED, Trent vs LMU (11-18-05)                   |
| FREE THROW ATT.....           | 9             | PLAISTED, Trent at USC (12/03/05)                   |
|                               | 9             | PLAISTED, Trent vs SUU (11-26-05)                   |
| FT PCT (min 3 made).....      | 1.000 ( 5-5 ) | BALDERSON, Jimmy vs Lamar University (11-30-05)     |
|                               | 1.000 ( 4-4 ) | MALAMAN, Fernando at USC (12/03/05)                 |
| REBOUNDS.....                 | 10            | PLAISTED, Trent vs Boise State Broncos (12/07/05)   |
|                               | 9             | PLAISTED, Trent at USC (12/03/05)                   |
| ASSISTS.....                  | 9             | BROADUS, Rashaun vs Lamar University (11-30-05)     |
|                               | 8             | AINGE, Austin vs SUU (11-26-05)                     |
| STEALS.....                   | 3             | MALAMAN, Fernando at Washington State (11/22/05)    |
|                               | 3             | REICHNER, Brock at Washington State (11/22/05)      |
| BLOCKED SHOTS.....            | 3             | MALAMAN, Fernando vs Boise State Broncos (12/07/05) |
|                               | 2             | DAWES, Derek vs Boise State Broncos (12/07/05)      |
|                               | 2             | PLAISTED, Trent vs Lamar University (11-30-05)      |
|                               | 2             | PLAISTED, Trent vs SUU (11-26-05)                   |
| TURNOVERS.....                | 5             | REICHNER, Brock vs Lamar University (11-30-05)      |
|                               | 5             | BROADUS, Rashaun vs Lamar University (11-30-05)     |
|                               | 5             | PLAISTED, Trent at Washington State (11/22/05)      |
| FOULS.....                    | 5             | PLAISTED, Trent at USC (12/03/05)                   |
|                               | 5             | BALDERSON, Jimmy vs LMU (11-18-05)                  |