



# Athletic Communications

30 Smith Fieldhouse • Provo, Utah • 84602  
801-422-8948 • fax 801-422-0633

## WOMEN'S BASKETBALL RELEASE

**Game - #23 {BYU (12-10, 6-4) @ Utah, (21-3, 10-0), Feb. 19, 2008, 8 p.m. MT}**  
**Game - #24 {BYU (12-10, 6-4) vs. SDSU, (13-10, 4-7), Feb. 23, 2008, 2 p.m. MT}**

### BYU 2007-08 Schedule/Results

DATE	OPPONENT	TIME/RESULT
N 9	@ UC Santa Barbara	W 61-50
N 13	@ Arkansas State	L 53-54
N 17	vs. Fresno State	W 78-59
N 20	vs. Hartford	L 59-70
N. 23	vs. Seton Hall	W 47-43
N 29	@ U Conn	L 34-80
D 1	@ Sacred Heart	L 44-49
D 5	vs. New Mexico State	L 54-52
D 8	vs. Utah Valley U.	W 72-52
D 12	@ Weber State	L 54-65
D 15	vs. UCLA	W 68-58
D 29	@ Utah State	W 70-64
J 12	@ Colorado State *	W 60-39
J 16	vs. UNLV * (BYUTV)	W 67-55
J 19	vs. Utah * (Mtn.)	L 49-80
J 23	@ SDSU *	L 39-62
J 26	@ New Mexico *	W 41-38
J 30	vs. Air Force * (BYUTV)	W 52-47
F 2	vs. Wyoming *	W 56-42
F 5	@ TCU * (Mtn.)	L 54-73
F 13	vs. CSU * (BYUTV)	W 59-44
F 16	@ UNLV *	L 68-73ot
F 19	@ Utah * (CSTV)	8 p.m.
F 23	vs. San Diego St. *	2 p.m.
F 26	vs. UNM * (Mtn.)	6 p.m.
M 1	@ Air Force *	2 p.m.
M 5	@ Wyoming * (Mtn.)	6 p.m.
M 8	vs. TCU * (CSTV)	TBA
M 6-10	@ MWC Champs.	TBA
M 22-24	@ NCAA 1st/2nd Round	TBA
M 29-31	@ NCAA Regionals	TBA
A 6-8	@ Final Four	TBA

\*MWC Games

All Times Local to Site

### BYU Athletic Communications

Basketball Contact: Norma Collett  
 E-Mail: norma\_collett@byu.edu  
 Office Phone: 801-422-4908  
 Office Fax: 801-422-0633  
 Mobile Phone: 801-372-0989  
 Press Row Phone: 801-422-3675  
 Web Site: byucougars.com

### THIS WEEK IN WOMEN'S BASKETBALL

Two more league games are on tap for BYU's women's basketball team. The Cougars (12-10, 6-4) travel to Salt Lake City on Tues. Feb. 19 for a game against instate rival Utah (21-3, 10-0), the second meeting between the two MWC foes and the second contest as part of the Deseret First Duel Rivalry Series. BYU then returns to the Marriott Center to host SDSU (13-10, 4-7) on Sat. Feb. 23 at 2 p.m. In this week's MWC standings, Utah is in first, BYU in fourth, and SDSU is tied for sixth place.

**Game #23-** 02/19/08: BYU @ UTAH Time: 8:00 p.m. MT Arena: Huntsman Center  
**Game #24-** 02/23/08: BYU vs. SDSU Time: 2:00 p.m. MT Arena: Marriott Center

#### Following the Cougars –

**Television:** Tuesday night's game between BYU and Utah at the Huntsman Center will air live nationally on CSTV. Ann Schatz and Tammy Blackburn will call the action.

**Radio:** Both games will air live on KQMB 96.7 FM.

**Internet:** Both league contests this week can be heard live on the internet at [byuradio.org/streaming](http://byuradio.org/streaming). Jay Monsen will call the action for the audio streaming and FM radio broadcasts.

**Live stats:** All of the games can be accessed with the live stats link by logging on to: [www.byucougars.com/basketball\\_w/](http://www.byucougars.com/basketball_w/)

**Cougar All-Access:** Those who have signed up for Cougar All-Access can also view the games on their computers.

### BYU Probable Starters

No.	Name	Pos.	Ht.	Yr.	PPG	RPG
22	Mindy Nielson	G	5-10	Fr	7.4	3.0
30	Mallary G. Carling	G	5-10	Sr	14.2	3.9
32	Shawnee Slade	F	5-11	Jr	7.7	5.6
5	Ashley Cheesman	F	6-0	Sr	2.1	2.1
52	Lauren R. Varley	C	6-3	Sr	7.7	8.7

### Reserve Players

No.	Name	Pos.	Ht.	Yr.	PPG	RPG
45	Keilani Moeaki	F	6-2	Fr	4.5	3.5
54	Cassie King	F	6-3	Jr	4.9	3.1
23	Coriann Wood	F	6-1	Fr	3.2	2.1
14	Sarah Red	G/F	5-11	Jr (rs)	2.5	0.3
3	Jazmine Foreman	G	5-5	Fr	2.1	1.0
13	Jaime Judkins	G	5-6	So	0.9	0.6
55	Megan Marks	F	6-2	Fr	0.3	1.0
0	Lauren Nichols	F	6-0	Fr (rs)	0.4	0.1

**BYU Quick Facts**

**Basketball Information**

Head Coach	Jeff Judkins (Utah, 1978)
Office Phone	801-422-8035
Best time to call	9-10:00 a.m. daily
Record at BYU/Yrs.	138-72/6
Career Record:	same
Assistant Coach	Alli Bills
Office Phone	801-422- 1548
Assistant Coach	Jonas Chatterton
Office Phone	801-422 -8155
Assistant Coach	Stacy Jensen
Office Phone	801-422-7682

**Team Facts**

2007-08 Record:	12-10, 6-4
2006-07 Record	23-10,12-4
2006-07 Post Season	0-1, NCAA
Starters Returning/Lost	2/3
Letterwinners Returning/Lost	6/3
Newcomers	8

**Roster Breakdown**

**STARTERS RETURNING: (2)**

Mallary Gillespie: 5-10 S, G (13.6 ppg, 3.7 rpg)  
Lauren Riley: 6-3 Sr, C (7.4 ppg, 6.5 rpg)

**STARTERS LOST: (3)**

Dani Wright: 6-3 Sr, F (13.4 ppg, 6.8 rpg)  
Melinda Johnsen: 5-10 Sr, F/G (6.0 ppg, 2.8 rpg)  
Jennie Keele: 5-10 Sr, G (6.2 ppg, 3.7 rpg)

**LETTERWINNERS RETURNING: (4)**

Ashley Cheesman: 6-0 Sr, F (2.2 ppg, 1.7 rpg)  
Jaime Judkins: 5-6 So, G (0.2 ppg, 0.6 rpg)  
Cassie King: 6-3 Jr, C (3.5 ppg, 2.6 rpg)  
Shawnee Slade: 5-11 Jr, G/F (7.8 ppg, 4.5 rpg)

**OTHERS RETURNING: (2)**

Lauren Nichols: 6-0 Fr, G (RS last season)  
Sarah Red: 5-11 So, G/F (RS last season)

**LETTERWINNERS LOST: (3)**

Dani Wright: 6-3 Sr, F (13.4 ppg, 6.8 rpg)  
Melinda Johnsen: 5-10 Sr, F/G (6.0 ppg, 2.8 rpg)  
Jennie Keele: 5-10 Sr, G (6.2 ppg, 3.7 rpg)

**NEWCOMERS: (6)**

Stephanie Buhler: 6-0 Fr, F - Oregon City, OR/Oregon City HS  
Jazmine Foreman: 5-5 Fr, G - Vancouver, WA/Hudson's Bay HS  
Megan Marks: 6-2 Fr, F - South Jordan, UT/Bingham HS  
Keilani Moeaki: 6-2 Fr, F - Warrenville, IL/Wheaton Wville S HS  
Mindy Nielson: 5-10 Fr, G - Centennial, CO/Regis Jesuit HS  
Coriann Wood: 6-1 Fr, F - Othello, WA/Connell HS

**Team Stats – 2007-08**

- ◆ Shooting from the field: (.391, 462-1182)
- ◆ Shooting from the free-throw line: (.657, 199-303)
- ◆ Shooting from three-point line: (.308, 114-370)
- ◆ Average points per game: 56.2
- ◆ Average rebounds per game: 39.5



**BYU QUICK HITS**

**The team**

- Two starters are among the six letterwinners returning for the 2007-08 season. The team also returns two redshirts in addition to six very talented newcomers
- The seniors are MWC Second Team honoree guard Mallary Gillespie-Carling and MWC Honorable Mention Lauren Riley-Varley. Both were also named to the 2007 MWC All-Tournament Team.

Among the letterwinners are junior forward/guard combo Shawnee Slade, senior forward Ashley Cheesman and junior center Cassie King. The trio return with the most playing experience and an understanding of coach Judkins' game plan. Guard Jaime Judkins who also comes in with significant playing time experience.

Two redshirts who were on the team last year, freshman forward Lauren Nichols and sophomore guard Sarah Red, a transfer from the University of Utah, will also provide solid experience on the team as newcomers.

Six new incoming freshmen will take to the court in 2007-08. They are:  
Stephanie Buhler: 6-0, F, Oregon City, OR/Oregon City HS  
Jazmine Foreman: 5-5, G, Vancouver, WA/Hudson's Bay HS  
Megan Marks: 6-2, F, South Jordan, UT/Bingham HS  
Keilani Moeaki: 6-2, F, Warrenville, IL/Wheaton Warrenville South HS  
Mindy Nielson: 5-10, G, Centennial, CO/ Regis Jesuit HS  
Coriann Wood: 6-1, F, Basin City, WA/Connell HS

**● 2007-08 HIGHLIGHTS AND NOTABLES ●**

**TEAM**

- ⇒ The captains on the 2007-08 season are seniors Mallary Gillespie-Carling and Lauren Riley-Varley
- ⇒ When playing on the road this season, BYU has a 4-6 record to date.
- ⇒ The 56-42 home victory over No.15 Wyoming marked the first time the Cougars have defeated a ranked opponent since the 55-52 upset against then No. 5 Stanford in Palo Alto Calif., in the 2007 Preseason WNIT on 11/13/06. BYU was ranked No. 24 at that time.
- ⇒ With the 67 points scored vs. UNLV on 01/16/08, BYU improved to 7-0 this season when scoring at least 60 points a game.

**USA Today ESPN Div. I Top 25 Coaches Poll- 2/11/08**

**Rk. School**

1. Tennessee (22-1)
2. Connecticut (22-1)\*
3. North Carolina (22-2)
4. Rutgers (19-4)
5. Maryland (25-2)
6. Stanford (22-3)
7. LSU (20-3)
8. Baylor (21-2)
9. California (21-3)
10. Oklahoma (17-4)
11. West Virginia (19-3)
12. Duke (18-6)
13. George Washington (19-4)
14. Old Dominion (20-3)
15. Oklahoma State (19-3)
16. Notre Dame (18-5)
17. Kansas State (16-6)
18. Pittsburgh (18-5)
19. Texas A&M (18-6)
20. Utah (20-3) \*
21. Wyoming (19-3)\*
22. Ohio State (18-6)
23. Syracuse (18-4)
24. Georgia (17-7)
25. Marist (23-2)

\*Denotes 07-08 Opponent. Receiving Votes: Hartford\*

**2007-08 BYU's record when...**

BYU leads at half . . . . .	11-2
Opponent leads at half . . . . .	1-7
Score is tied at the half . . . . .	0-1
Game goes into overtime . . . . .	0-1
BYU shoots 50 % or better . . . . .	2-0
Opponent shoots 50 % or better . . . . .	0-3
BYU makes five or more 3-pointers . . . . .	8-4
Opponent makes 5 or more 3-pointers . . . . .	6-6
BYU outrebounds opponent . . . . .	10-3
Opponent outrebounds BYU . . . . .	2-7
Rebounds are equal . . . . .	0-1
BYU has 16 and under turnovers . . . . .	4-3
Opponent has 16 and under . . . . .	5-9
BYU has 17-20 turnovers . . . . .	2-3
Opponent has 17-20 turnovers . . . . .	2-4
BYU has more than 20 turnovers . . . . .	6-4
Opponent has more than 20 turnovers . . . . .	3-0
Cougars play at home . . . . .	8-3
Cougars play on the road . . . . .	4-7
Cougars play at neutral site . . . . .	0-0

- ⇒ The 6,206 fans in attendance in the Marriott Center for the Utah game on 01/19/08 set a new school record.
- ⇒ The 55 rebounds by the Cougars vs Fresno State on 11/17/07 are a season high and rank tied for third place in the program's history.
- ⇒ The win over Fresno State improved BYU's all-time record in home openers to 24-11 and under coach Judkins is now 6-1 in home openers.
- ⇒ The 78 points and the 55 rebounds recorded in the win over Fresno State are the most in both categories to date.
- ⇒ For the first time this season four of BYU's five starters fouled out of the game at UNLV on 2/16/08.
- ⇒ The team grabbed 48 rebounds in the game at UNLV on 2/16/08 marking the second best outrebounding game to date during MWC action. They grabbed 49 rebounds at UNM on 1/26/08.
- ⇒ The nine three pointers made at UNLV on 2/16/08 were the most against and MWC opponent to date and tied a season high. BYU also had nine treys vs. UCLA on 12/15/07.
- ⇒ In turnovers, the team had season lows of just 13 in each of its last two games vs. MWC opponents (Wyoming on 2/2/08 and AF on 1/30/08).
- ⇒ The team grabbed a game high 49 boards in the win at UNM on 1/26/08, marking the third best rebound output of the season and the best over an MWC foe to date.
- ⇒ In the win over Utah Valley, the team scored 72 points which is second best to date and the 20-point margin of victory is the most this season.
- ⇒ The 20 assists in the win over Utah Valley on 12/08/07 were the most to date.
- ⇒ In the Dec. 8th win over the Wolverines, the 17 steals were a new season best.
- ⇒ BYU scored 35 points in the first half vs. Utah Valley, the second most scored in a first half and the fourth most in any half to date.
- ⇒ The Cougars held CSU to 39 total points in the first league game of the year on 1/12/08, the lowest total points scored by an opponent to date. The Rams only scored 16 points in the first half of action, the lowest by an opponent to date. In the second meeting between the two teams on 2/13/08 CSU scored 15 points in the first half.
- ⇒ **Scoring Machine:**
  - Games with two players scoring in double figures- (8) UCSB, Ark. State, New Mexico State, UVU, at CSU on 1/12/08, vs. UNLV on 1/16/08, UNM, TCU.
  - Games with three players scoring in double figures- (5) Fresno State, Weber State, Utah State, Wyoming, and vs. CSU on 2/13/08.
  - Games with four players scoring in double figures- (2) UCLA and at UNLV on 2/16/08.
- ⇒ **Starting lineups:**

	<b>Record</b>
Foreman, Carling, Slade, Cheesman, Varley:	2-2
Foreman, Carling, Slade, King, Varley:	1-1
Judkins, Carling, Slade, Wood, Varley:	0-1
Foreman, Carling, Slade, Moeaki, Varley:	1-2
Nielson, Carling, Slade, Moeaki, Varley:	4-2
Nielson, Carling, Slade, Chessman, Varley:	4-2

**PLAYER**

⇒ **Center Lauren Riley-Varley:** Recorded her fifth double double of the year and 10th career with 10 points and team high 13 rebounds at UNLV on 2/16/08. Added her fourth double double of the season and ninth career with 11 points and 11 rebounds vs. CSU on 2/13/08. In the home game vs. AF picked up new season and career highs in rebounds with 15. Versus UNLV on 1/16/08, she picked up her third double double of the season and eighth overall with the 14 points and 11 rebounds. She picked up back-to-back double doubles in the first two games of this season with 14 points and 11 rebounds against UCSB and 16 points and 13 boards at Arkansas State. The 16 points at Ark. St., were season highs to date. Varley scored 10 points in the game at Utah St., on 12/29/07 for her fourth double figure game this season and 23rd career double digit contest.

⇒ **Guard Mallary Gillespie-Carling:** Named MWC Player of the Week on Monday, Feb. 4, 2008. Has scored in double figures in 63 games during her career, 16 so far this year including the 16 points in the game at UNLV on 2/16/08. She currently ranks 14th in BYU's 1,000-point club with 1,318 as of 2/17/08. Carling has scored 20-plus points five times this season including four times against MWC opponents. In the home game vs. Utah on 01/19/08 she tallied five treys for new season highs. At home vs. UNLV on 1/16/08, she scored 17 first-half points, the most she has scored in any half this season, and her 10 free throws were the most she has made in any game during her career. In the three-point field goals made category, ranks second with a career total of 233, and 51 to date.

⇒ **Guard Mindy Nielson:** Scored a new season and career high in points with 16 at UNLV on 2/16/08 marking her seventh double figure contest of the year. Dished out a season high nine assists in the game vs. CSU on 2/13/08. Tallied 15 points at Weber State on 12/12/07. Picked up season and career highs in blocks (5), steals, (5), rebounds (6) vs. Utah Valley St. on 12/08/07.

⇒ **Guard Shawnee Slade:** Grabbed new season and career highs in rebounds with 12 vs. Wyoming on 2/2/08, and has recorded eight or more rebounds in seven games this season. Tallied 11 points in the contest at UNLV on 2/16/08 for her 18th career, seventh season, and third league double digit game. Scored 14 points in the game vs. CSU on 2/13/08 marking her 17th career double digit contest, her sixth this year and the second in MWC action. She led the team in scoring with 15 points vs. Utah Valley on 12/08/07 marking her 13th career double digit game contest. Grabbed a season and career high 11 rebounds vs. New Mexico State on 12/05/07. The 11 boards were team and game highs as well. Picked up 10 points vs. UCLA on 12/15/07.

⇒ **Forward Coriann Wood:** Picked up season and career highs in points with 13 in the league game at CSU on 01/12/08. In that same game, she tallied season and career highs in three-pointers with three. She grabbed season and career highs in rebounds in the game at UConn on 11/29/07 with five boards. Wood started her first collegiate game at Sacred Heart on 12/01/07.

⇒ **Guard Jazmine Foreman:** Dished out season and career highs in assists with eight vs. Utah Valley on 12/08/07.

⇒ **Guard Jaime Judkins:** Started in the game at Sacred Heart on 12/01/07. Dished out three assists in the game at Weber St. on 12/12/07 for new season and career highs.

⇒ **Guard/Forward Sarah Red:** Grabbed a season and career high three boards vs. CSU on 2/13/08.

⇒ **Forward Ashley Cheesman:** Tallied new season and BYU career high in points with 10 vs. CSU on 2/13/08.

## 2007-08 MOUNTAIN WEST CONFERENCE NEWS



### 2007-08 MWC Women's Basketball Standings 02/18/08

Team (Rank)	Conf. Gms	All Gms
Utah (19/20)	10-0	21-3
TCU	9-2	16-9
Wyoming (22/21)	8-3	20-4
BYU	6-4	12-10
New Mexico	5-6	13-11
San Diego State	4-7	13-10
UNLV	4-7	8-16
Air Force	2-9	8-15
Colorado State	0-10	2-21

### THIS WEEK IN THE MWC

February 19 (Tuesday)

BYU @ UTAH, 8 p.m (CSTV)

February 20 (Wednesday)

AIR FORCE @ UNM, 7 p.m.

TCU @ CSU , 7 p.m.

SDSU @ UNM, 7 p.m.

No. 22/21 WY @ SDSU, 7 p.m.

February 23 (Saturday)

SDSU @ BYU, 2 p.m.

No. 22/21 WY @ UNLV, 7 p.m.

No. 19/20 UTAH @ UNM, 1 p.m.

February 24 (Sunday)

CSU @ AF, 2 p.m. (The Mtn.)

### PRESEASON MWC POLL

In October the Cougar team was picked to finish third in the MWC Preseason Poll. Senior Mallary Gillespie-Carling was picked to the five member Preseason All-Conference Team.

Rk.	Team (1st place votes)	Points
1.	Wyoming (24)	203
2.	TCU (2)	188
3.	BYU (1)	182
4.	New Mexico (3)	174
5.	Utah	158
6.	UNLV	109
7.	San Diego State	93
8.	Colorado State	53
9.	Air Force	37

#### Preseason All-Conference Team

Name	Class	Pos.	School
Adrienne Ross	Sr.	G	TCU
Dionne Marsh	Sr.	F	UNM
Hanna Zavec	Sr.	F	WY
Morgan Warburton	Jr.	G	Utah
Mallary Gillespie-Carling	Sr.	G	BYU

**COUGARS IN MWC STATS (AS OF 02/18/08)**

<b>Team Stats</b>	<b>All Games</b>	<b>MWC Games</b>
Scoring Offense . . . . .	8th . . . . .	7th
Scoring Defense . . . . .	4th . . . . .	5th
Scoring Margin . . . . .	6th . . . . .	5th
Free Throw % . . . . .	7th . . . . .	4th
Field Goal % . . . . .	5th . . . . .	6th
Field Goal % Defense . . . . .	1st . . . . .	1st
3-PT Field Goal % . . . . .	8th . . . . .	6th
3-PT Field Goal % Defense . . . . .	1st . . . . .	1st
Rebounding Offense . . . . .	1st . . . . .	1st
Rebounding Defense . . . . .	7th . . . . .	8th
Rebounding Margin . . . . .	3rd . . . . .	3rd
Blocked Shots . . . . .	3rd . . . . .	2nd
Assists . . . . .	6th . . . . .	6th
Steals . . . . .	8th . . . . .	6th
Turnover Margin . . . . .	9th . . . . .	8th
Assist/Turnover Ratio . . . . .	6th . . . . .	7th
Offensive Rebounds . . . . .	7th . . . . .	7th
Defensive Rebounds . . . . .	1st . . . . .	1st
3-PT Field Goals Made . . . . .	6th . . . . .	5th-t

<b>Individual Stats</b>	<b>All Games</b>	<b>MWC Games</b>
Scoring . . . . .	6th M.Carling (14.2) . . . . .	6th-t (14.6)
. . . . .	n/a . . . . .	24th M.Nielson (8.1)
. . . . .	27th S.Slade (7.7) . . . . .	27th (7.8)
. . . . .	28th L.Varley (7.7) . . . . .	30th (6.6)
Rebounding . . . . .	1st L.Varley (8.7) . . . . .	1st (9.2)
. . . . .	16th S.Slade (5.6) . . . . .	17th (5.0)
Field Goal % . . . . .	2nd L.Varley (.503, 78-155) . . . . .	3rd (.492, 30-61)
. . . . .	n/a . . . . .	11th M.Carling (.413, 52-126)
Assists . . . . .	6th M.Nielson (2.86) . . . . .	3rd (4.40)
. . . . .	10th M.Carling (2.73) . . . . .	n/a
Free Throw % . . . . .	n/a . . . . .	10th M.Nielson (.786, 22-28)
Steals . . . . .	8th M.Nielson (1.64) . . . . .	4th-t (2.00)
. . . . .	n/a . . . . .	13th-t M.Carling (1.60)
3-PT Field Goal % . . . . .	14th M.Carling (.342, 51-149) . . . . .	9th (.377, 23-61)
3-PT Field Goals Made . . . . .	1st M.Carling (2.32) . . . . .	2nd (2.30)
Blocked Shots . . . . .	4th L.Varley (1.41) . . . . .	4th (1.50)
Assist/Turnover Ratio . . . . .	n/a . . . . .	4th M.Nielson (1.19)
Offensive Rebounds . . . . .	1st-t L.Varley (3.00) . . . . .	2nd (3.50)
Defensive Rebounds . . . . .	1st L.Varley (5.68) . . . . .	1st (5.70)
. . . . .	n/a . . . . .	10th S.Slade (4.30)

**ABOUT THIS WEEK'S LEAGUE OPPONENTS**

**UTAH - Salt Lake City, Utah at 8 p.m. (02/19/08)**

The Utes and Cougars battle in Salt Lake City on Tuesday night in the second meeting between the two MWC foes and for the second time in the 2007-08 Deseret First Duel Rivarly Series. Utah is currently in first place in this week's league standings with a perfect 10-0 record, are ranked 19/20, and have an 21-3 overall record. Three players score in double figures led by Leilani Mitchell with 17.3 points and 3.9 rebounds. Morgan Warburton follows with 17.2 points and 5.8 boards. Kalee Whipple contributes with 14.3 points and grabs a team high 6.8 boards per game.

**UTAH Probable Starters**

Pos.	No.	Name	Ht	Yr	PPG	RPG
F	2	Kalee Whipple	6-0	So	14.3	6.8
F	31	Katie King	6-1	Jr	7.2	5.1
F	45	Jessica Perry	6-3	Sr	6.1	5.3
G	11	Leilani Mitchell	5-5	Sr	17.3	3.9
G	15	Morgan Warburton	5-11	Jr	17.2	5.8

**Stat Comparisons**

	BYU	UT
Field Goals:	.391	.477
Free Throws:	.657	.743
Three-Pointers:	.308	.393
Points Per Game:	56.2	69.5
Rebounds Per Game:	39.5	37.9

**Series History**

**Record:** 33-57 favoring Utah.

**Last Meeting:** During the first meeting between these two instate rivals and MWC foes, Utah defeated BYU in Provo 80-49 on 1/19/08. When playing at the Huntsman Center, the Cougars have an 8-28 record with their last win on 1/7/06 a 61-60 BYU victory.

**THE DESERET FIRST DUEL RIVALRY SERIES**

The 2007-08 season marks the first year of the newly created Deseret First Duel presented by Deseret First Credit Union.

The term Deseret refers to the original name of the territory of Utah (State of Deseret) and is an appropriate name for an athletic rivalry that dates back to the 1890s. The term Duel refers to a contest between two parties to decide a point of honor. Blending the two terms is the ideal name for a formalized series.

The rivalry series includes competition in the 12 sports the two universities compete head-to-head during regular-season play. The Deseret First Duel uses a system that awards points to the winner of each head-to-head competition. A team trophy is awarded to the individual winner of each sport -- football, basketball, softball, etc. Points won by the individual sports count toward each school's overall total. At the conclusion of each school year, a granite traveling trophy will be awarded to the overall rivalry series champion.

Both universities have a Deseret First Duel web link on their respective athletic websites (byucougars.com and utahutes.com). The website provides scores, point totals, upcoming rivalry games and special online offers, including the ability to enter to win the Ultimate Fan Experience.

Deseret First Credit Union, founded in 1955, operates 11 branches from Logan to St. George, has more than 50,000 members and over \$417 million in assets. Deseret First is a full-service credit union offering deposit and loan accounts, insurance, investments, SBA loans and more.



**Deseret First Duel Rivalry Series Standings:** BYU leads 23-14

**SAN DIEGO STATE - Provo, Utah at 2 p.m. (02/23/08)**

SDSU comes to Provo with a 13-10, 4-7 record and in sixth place in this week's MWC standings. They host Wyoming on Wednesday, Feb. 20 before making the trip to Provo for Saturday afternoon's contest. Three Aztecs are scoring in double figures with 13.8 points from Jene Morris. She's followed by Paris Johnson who is tallying 12.1 points and is grabbing a team high 6.7 boards per game. Allison Duffy also contributes with 10.3 points and 5.5 rebounds per contest. Quenese Davis tops the list in assists with a total of 112 to date. Beth Burns is in her 11th season with the SDSU women's basketball program.

**SDSU Probable Starters**

<b>Pos.</b>	<b>No.</b>	<b>Name</b>	<b>Ht</b>	<b>Yr</b>	<b>PPG</b>	<b>RPG</b>
F	22	Shanna Demus	5-8	Sr	6.1	3.1
F	34	Allison Duffy	6-2	Fr	10.3	5.5
C	32	Paris Johnson	6-4	Fr	12.1	6.7
G	03	Quenese Davis	5-9	So	8.6	3.1
G	05	Jene Morris	5-9	So	13.8	2.8

**Stat Comparisons**

	<b>BYU</b>	<b>SD</b>
Field Goals:	.391	.426
Free Throws:	.657	.678
Three-Pointers:	.308	.326
Points Per Game:	56.2	66.3
Rebounds Per Game:	39.5	34.1

**Series History**

**Record:** 24-10 favoring BYU.

**Last Meeting:** In the first game between the Cougars and Aztecs, SDSU beat BYU in San Diego 62-39 on 1/23/08. When playing in the Marriott Center, SDSU has a 2-13 record. The last time they won in Provo was on 1/14/95 when both teams were members of the WAC, a 63-55 victory,

**MEDIA AVAILABILITY**

**Team Practice Times - at home**

-The BYU team practices at the Marriott Center MWF from 11:30 a.m., to 1:30 p.m. On Tuesday's, practice is scheduled from 1 to 3 p.m., and on Thursday's from 11:30 to 2 p.m.

- Coach Judkins and players are available for interviews prior to or after practice. All interviews are scheduled in advance. Norma Collett is the Basketball Communications Director for the team and can be contacted by phone or email. Contact at: 801-422-4908, office, 801-372-0989, cell, and email [norma\\_collett@byu.edu](mailto:norma_collett@byu.edu)

**LOOKING AHEAD**

On Tuesday, Feb. 26 the Cougar women host New Mexico in a 7 p.m. tip off, a game that can be seen live on The Mtn. BYU then travels to Colorado Springs where they will battle the Air Force Falcons on Sat. Mar. 1 at 2 p.m.





**Head Coach - Jeff Judkins**  
**Overall Record:** 138-72  
**2007-08:** 12-10, 6-4

Two-time MWC Coach of the Year Jeff Judkins begins his seventh year as head coach of the women's basketball program, after garnering back-to-back MWC Coach of the Year honors. Prior to heading up the women's program, he served one year (1999-2000) as Director of Basketball Operations for the BYU men's team. In 2000 he became an assistant coach on the women's team.

Last year the BYU team compiled a 23-10, 12-4 record, made its eighth NCAA tournament appearance, and second consecutive. The team also won the MWC Regular Season title for the second straight time. Dani Wright was named MWC Co-Player of the Year. Her honor marks back-to-back years that a BYU player has received the honor. Ambrosia Anderson received the same award during the 2005-06 campaign.

Two seasons ago under Judkins leadership, the Cougars compiled their best finish in school history with a 26-6 record, clinched their first MWC regular season title since 1992 and received a no. 7 seed in the NCAA tournament, the highest seed for any BYU program. For the first time since the 2002-03 season, the team and its 13-1 record to start the year broke into the women's basketball collegiate polls, ranked No. 23 by the AP Poll and the USA Today/ESPN/WBCA Coaches Poll. They would rank as high as 18 and 16 in the two respective polls, finishing the year at No. 20. Last season Judkins picked up his 100th win, a 69-67 victory over CSU on Mar. 2, the same time the team clinched the league's regular season title.

Under Judkins tutelage, the women's basketball program has had consistent success with four postseason appearances including three NCAA Championships, guiding the team to its first ever Sweet Sixteen finish in 2002. In 2005, the 19-11 team played in the first round of the WNIT. Judkins has also coached two All-Americans in Erin Thom and Ambrosia Anderson. Both have gone on to play in the WNBA for the New York Liberty. Thom has been with the team for the past four years while Anderson just completed her first year playing professionally.

Coach Judkins has won at least 17 games every year but one since becoming the women's head coach. With his 23 wins last season, he has recorded three 20 win seasons and two MWC Regular Season titles.

The longtime University of Utah coach and player came to Provo with a proven record of success dating back to his high school days at Highland HS in Salt Lake City. An all-state selection in basketball, football and baseball, Judkins went on to play for the University of Utah from 1974-78.

While playing at Utah, Judkins helped lead the Utes to one conference championship and two berths in the NCAA tournament. He was a second-team academic All-American and three-time District VII academic selection. He also earned three first team All-WAC honors and was a member of the 1977 United States World Games team that captured the gold medal.

Judkins also played five years in the National Basketball Association for the Boston Celtics, Portland Trailblazers, Detroit Pistons and Utah Jazz. He was a second-round pick of the Celtics in 1978, the same year the Celtics selected Larry Bird with the sixth pick overall.

After his NBA career, he returned to Utah in 1989 and was an instrumental part of that program's success during his 10 years, recruiting such players as Keith Van Horn, Andre Miller, Mike Doleac, Hanno Mottola, Alex Jensen, Trent Whiting, Garner Meads, Jeff Johnsen and Britton Johnsen. Judkins, graduated from the University of Utah in 1978 with a degree in health and physical education. He and his wife Mary Kaye are the parents of five children: Jessica (27), (married to Paul), Jordan (25), Jenna (23), Jaime, who plays on the basketball team, (20), and Jaxson (17). Jenna plays on the volleyball team at BYU.

Hobbies: Waterskiing, horseback riding, hunting, golf, softball, and watching ESPN.

Judkins Coaching Record			
School	Yrs.	Rec.	Postseason
Utah*	1990-99	250-76	
BYU	2001-02	24-9	NCAA Sweet 16
BYU	2002-03	19-12	NCAA 1st Round
BYU	2003-04	15-14	DNC
BYU	2004-05	19-11	WNIT 1st Round
BYU	2005-06	26-6	NCAA 2nd Round
BYU	2006-07	23-10	NCAA 1st Round
* as an assistant to the men's team			

**BYU Women's Basketball 2007-08 Numerical Roster**

<b>No.</b>	<b>Name</b>	<b>Pos.</b>	<b>Ht.</b>	<b>Cl.</b>	<b>Exp.</b>	<b>Hometown/Previous School</b>
0	Lauren Nichols	F	6-0	Fr	HS	Irvine, CA/Hesperia HS
3	Jazmine Foreman	G	5-5	Fr	HS	Vancouver, WA/Hudson's Bay HS
5	Ashley Cheesman	F	6-0	Sr	3V	Orem, UT/Mountain View HS/SDSU
13	Jaime Judkins	G	5-6	So	1V	Salt Lake City, UT/Skyline HS
14	Sarah Red	G/F	5-11	Jr	1V	Provo, UT/Timpview HS/Utah
21	Stephanie Buhler	F	6-0	Fr	HS	Oregon City, OR/Oregon City HS
22	Mindy Neilson	G	5-10	Fr	HS	Centennial, CO/Regis Jesuit HS
23	Coriann Wood	F	6-1	Fr	HS	Basin City, WA/Connell HS
30	Mallary Gillespie-Carling	G	5-10	Sr	3V	Vineyard, UT/Mountain View HS
32	Shawnee Slade	G/F	5-11	Jr	2V	Taylorville, UT/Taylorville HS
33	Haley Hall	G	5-4	Fr	1V	Syracuse, UT/Clearfield HS
45	Keilani Moeaki	F	6-2	Fr	HS	Warrenville, IL/Wheaton Warrenville South HS
52	Lauren Riley-Varley	C	6-3	Sr	3V	San Clemente, CA/San Clemente HS
54	Cassie King	C	6-3	Jr	2V	Provo, UT/Provo HS
55	Megan Marks	F	6-2	Fr	HS	South Jordan, UT/Bingham HS

**Walkons**

31	Amy Alletto	G	5-9	So	HS	Parker, CO/Ponderosa HS
10	Marie Beck	G	5-8	Fr	HS	Oxnard, CA/Channel Islands HS
34	Marianne Bell	F	6-1	Fr	HS	Ashburn, VA/Stone Bridge/Bruton HS

**Head Coach:** Jeff Judkins

**Assistant Coaches:** Alli Bills, Jonas Chatterton, Stacy Jensen

**Director of Basketball Operations:** Dan Nielson

**Athletic Trainer:** Carolyn Billings

**Team Manager:** Erica Eyestone

## RETURNING PLAYER BIOS

◆ **Mallary Gillespie-Carling** ◆  
Guard  
5-10, Senior  
Vineyard, Utah

# 30



**At BYU**

**SENIOR - (2007-08):** Named MWC Player of the Week on 2/4/08 ... started in all games ... in 16 of the 22 games to date has scored in double figures recording her 63rd career game with 16 points in the road game at UNLV on 2/16/08 and is the seventh of the year in MWC action ... she has scored 20-plus points in five contests this year ... in the game vs Utah on 1/19/08 tallied a season-high five treys ... in the home game vs. UNLV on 1/16/08 she recorded a total of 10 free throws, the most she has made in her career and the 17 first half points were season bests ... in the game vs. UCLA on 12/15/07 grabbed nine boards which are new season highs ... currently, she's the team's scoring leader with an average of 14.2 points and is second on the team in assists with a total of 60 to date ... is in 14th place on BYU's 1,000-point club with a total of 1,318 points as of 2/17/08 ... she also ranks second all time in three-pointers with 233, 48 this year.

**JUNIOR - (2006-2007):** Final player notes: Started in all games ... named to the 2007 MWC Championships All-Tournament Team ... honored with Second Team All-MWC honors ... ranks first on the team in scoring with a 13.6 points average, and in total points with 449 ... is third in assists with 93 and ties for third in steals with 35 ... finished with the best free throw percentage on the team (.859) ... has the top percentage in three-point field goal made and attempted with 76 made for a 2.3 average and attempts with 222 for a 6.7 average ... when playing in MWC regular season contests, finished the year ranked fourth in scoring, seventh in assists, third in free throw percentage, eighth in three-point field goal percentage and first in three-point field goals made, and was third in the assist/turnover ratio category ... in all MWC games, ranked eighth in scoring, fourth in free throw percentage, 10th in assists, third in three-point field goals made ... grabbed a new season high in rebounds with nine in the semifinal game of the MWC Champs., vs. Utah on 3/09/07 ... picked up new season and career highs in points with 31 @ Wyoming on 2/15/07 and was named MWC Player of the Week on 2/19/07 for that performance marking her third Player of the Week award this season and career ... was honored with her second MWC Player of the Week honor on Feb. 5, 2007 for her scoring performance vs TCU (21 pts, 3 rebounds, 4 assists, 8-8 at the free throw line) ... tallied a new career high in three-pointers made in a game with eight vs. Weber State on 12/14/06 .... garnered first ever MWC Player of the Week honor on 12/18/06 for her stellar performance vs. Weber State which included a total of 30 points, half of those were from three point range ... scored in double figures in 23 of the 33 games played.

**Gillespie-Carling Stats:**

Yr	G/GS	FG-FGA %	FT-FTA %	3-pts %	Pts.	Reb.	A.	St.	To.
05	30/13	80-204.392	20-26.769	49-134 .366	229	87	44	27	46
06	32/32	117-289.405	36-49.735	58-160 .363	328	121	96	44	69
07	33/33	144-383.376	76-88.864	75-214 .350	439	119	92	34	73
08	22/22	109-283 .399	43-52 .827	51-149 .342	312	86	60	29	76

**Gillespie-Carling**

**Points:** 26 vs. UNLV 01/16/08  
**Rebounds:** 9 vs. UCLA 12/15/07  
**Assists:** 6 vs. New Mex. State 12/8/07  
**3-PTFG's Made:** 5 vs. Utah 01/19/08  
**Steals:**  
**Blocks:**

**Career Highs:**

31 @ Wyoming 02/15/07  
 10 vs. UNLV on 1/11/06  
 7 vs. UNM 02/02/06  
 8 vs. Weber St. 12/14/06  
 6 @ SDSU 02/22/06  
 2 @ Harvard 12/02/06

◆ **Lauren Riley-Varley** ◆

Center

6-3, Senior

San Clemente, CA

# 52



**At BYU**

**SENIOR - (2007-08):** Has started in all games to date ... recorded her sixth double double of the season and 10th career with the 10 points and a team high 13 rebounds in the road game at UNLV on 2/16/08 ... tallied her fourth double double of the season and ninth career with the 11 points and 11 boards in the home win vs. CSU on 2/13/08 ... recorded a season and career high in rebounds with 15 vs. AF on 1/31/08 and picked up new season highs in blocks with five tying her career number of blocks ... grabbed a team and game high 12 boards in the game at UNM on 01/26/08 ... tallied her third season and eighth career double double with 14 points and 11 rebounds vs. UNLV on 01/16/08 ... picked up back-to-back double doubles in the first two games of this season tallying 14 points and 11 rebounds against UCSB and 16 points and 13 boards at Arkansas State ... she's the team's leading rebounder with an average of 8.7 per game ... has scored in double digits in seven games to date.

**JUNIOR - (2006-2007):** Final player notes: Played in all games, started the final 26 ... named to the 2007 MWC Championships All-Tournament Team ... garnered Honorable Mention All-MWC honors ... ranks second in field goal percentage with .548 and is third in field goals made with a total of 108 for a 3.3 average ... finished the year in fourth place in both points (243) and in scoring average 7.4 points per game ... places second in rebounds and in rebound average with a total of 216 for a 6.5 average per contest ... is in first place in defensive rebounds and second in offensive rebounds with 4.1 and 3.2 respectively ... tops on the team in blocked shots with a total of 31 on the year ... during the MWC regular season schedule, finished second in rebounding, first in field goal percentage, tied for third place in blocked shots, was fourth in offensive boards and seventh in the defensive rebound category ... when playing in all MWC games, was second in the field goal percentage category, ninth in two other categories, rebounding and blocked shots, and fifth and 12th in offensive and defensive rebounds categories ... notched her fifth double double of the season and career with 10 points and 14 rebounds vs. UNM in the MWC Champ., on 3/10/07, the 14 rebounds were a new season high ... tallied her fourth double double of the season and fourth overall with the 11 points and 10 rebounds vs. SDSU on 2/24/07 ... picked up her fourth double double of the season and fourth overall with 18 points and 11 rebounds vs. UNM on 2/10/07 ... the 18 points in the game were new season and career highs as well ... she had five blocks vs. AFA on 2/08/07 which are new season and career highs ... recorded her third double double of her career and first this year with 10 points and 10 rebounds vs. TCU on 2/01/07 ... in the game @ AF on 1/06/07 grabbed 11 rebounds, her second best of the year ... in the game vs. CSUN on 12/09/06 grabbed a season and career high four steals ... scored in double figures in 10 games including five MWC contests.

**Riley-Varley Statistics**

Yr	G/GS	FG-FGA %	FT-FTA %	3-pts %	Pts.	Reb.	A.	St.	Bl.	To
05	28/0	23-51.451	10-21 .476	0-0 .000	56	47	3	2	8	24
06	32/0	84-165.509	25-67.373	0-0 .000	193	174	15	25	18	64
07	33/26	108-197.548	27-68.397	0-0 .000	243	216	22	20	31	77
08	22/22	78-155 .503	13-35 .371	0-1 .000	169	191	31	18	31	52

**Riley-Varley Season Highs**

**Points:** 16 vs. Ark.St. 11/13/07  
**Rebounds:** 15 vs. AF 01/30/08  
**Assists:** 3 @ Utah St. 12/29/07, once more  
**Steals:**  
**Blocks:** 5 vs. AF 01/30/08

**Career Highs:**

18 vs. UNM 02/10/07  
 same  
 3 vs. Oklahoma 03/20/06  
 4 vs. CSUN 12/09/06  
 same, once more

◆ Ashley Cheesman ◆

Forward  
 6-0, Senior  
 Orem, Utah

# 5



**At BYU**

**SENIOR - (2007-08):** Started in the first four games of the year and most recently in the last six league games on 2/16/08, 2/13/08, 2/5/08, 2/2/08, 1/30/08 and 1/26/08 for a total of 10 to date ... picked new season and BYU career highs in points with 10 vs. CSU on 2/13/08 ... has played in all games ... she's averaging 2.1 points and 2.1 boards per contest.

**JUNIOR - (2006-2007):** Final player notes: Played in all games, and started in the second half of the game vs. AF in the MWC Tournament on 3/07/07 ... grabbed a new season high in rebounds with six vs. AF on 3/07/07 ... picked up a new season and career high in points with eight vs. UNLV on 1/20/07 ... as of 1/23/07 had the same number of points and rebounds on the year with (33) and finished the season with a total of 72 points, and 57 rebounds ... picked up five rebounds vs. ISU on 11/10/06 in her first contest as a Cougar ... played an average of 9.9 minutes per game with a season high of 22 in the AF game on 03/07/07.

**Cheesman Statistics**

Yr	G/GS	FG-FGA %	FT-FTA %	3-pts %	Pts.	Reb.	A.	BL.	St.	TO.
07	33/0	31-70.443	9-15.600	1-11 .091	72	57	14	3	11	29
08	22/10	19-50 .380	9-15 .600	0-1 .000	47	46	12	2	4	18

**Cheesman**

**Season Highs**

**Points:** 10 vs. CSU 02/13/08  
**Rebounds:** 5 vs. CSU 02/13/08  
**Assists:** 2 vs. Set.Hall 11/23/07, two more  
**Steals:**  
**Blocks:**

**Career Highs**

8 vs. AF 03/07/07  
 6 vs. AF 03/07/07  
 2 vs. AF 03/07/07  
 2 vs. AF 03/07/07  
 3 vs. AF 03/07/07

◆ **Shawnee Slade** ◆  
Guard/Forward  
5-11, Junior  
Taylorsville, Utah

# 32



**At BYU**

**JUNIOR - (2207-08):** Has started in all games to date ... picked up her 18th career and seventh season double figure game with 11 points at UNLV on 2/16/08 ... in the home victory over CSU on 2/13/08 tallied her 17th career and sixth season double digit contest with a team and game high 14 points .... ranks third on the team in points with an average of 7.7 and second in rebounds grabbing 5.6 boards per contest ... grabbed 12 boards in the contest against No. 15 Wyoming on 2/2/08 for new season and career highs ... in the road game at UNM on 01/26/08 scored 12 points marking her 16th career double digit game, her fifth of the year and her first in MWC play ... grabbed 11 rebounds vs. New Mexico St. on 12/05/07 ... tallied 10 points vs. UCLA on 12/15/07 for her 15th career double figure game and the fourth this season ... picked up a season high 16 points vs. Fresno State on 11/17/07.

**SOPHOMORE - (2006-2007):** Final player notes: Played in all games starting in the first seven ... ranks third in scoring and in rebounds with 7.8 points and 4.5 boards per game ... finished ranked third on the team in total rebounds with 150, third in both offensive and defensive rebounds with a total of 46 and 104 respectively ... ranked in fourth place in both assists with a total of 69 for a 2.1 average and in steals with a total of 35 for a 1.1 average ... is second on the team in field goal attempts (8.7) average and fourth in field goals made (3.1) average ... in the MWC Champs., game vs. UNM picked up her 10th game scoring in double digits with 14 ... in the game vs. TCU tallied her ninth double figure game ... she had three back to back double figure games with (13) at the AFA game on 01/06/07, (16) at UNM on 01/10/07, and (11) vs. Wyoming on 01/13/07 ... picked up a new season and career high four three-pointers in a game @ UNM on 1/10/07 ... in the league game vs. TCU on 02/01/07 picked up a new season high in assists with five ... had a season and career high four steals vs. AF on 01/06/07 ... notched her second season and career double double with 22 points and 10 rebounds vs. SCU on 11/22/06, the 22 points in that game were new season and career high ... also in that game went .916 (11-12) from the free throw line, a new season and career best ... picked up first career and season double double with 10 points and 10 rebounds vs. ISU on 11/10/06 ... in the same game had her first career start, and the 10 rebounds are a new career high ... named MWC Player of the Week on 11/10/06 for her achievements in the ISU game.

**Statistics**

Yr	G/GS	FG-FGA %	FT-FTA %	3-pts %	Pts.	Reb.	A.	St.	Bl.	To.
06	32/0	38-101.376	21-29.724	6-17 .353	103	70	19	16	1	22
07	32/7	99-278.356	29-53.547	22-76.289	249	147	67	35	9	63
08	22/22	70-195 .359	8-19 .421	22-72 .306	170	123	34	20	5	45

**Slade**

**Points:**

**Rebounds:**

**Assists:**

**3-PT FG's Made:**

**Steals:**

**Blocks:**

**Season Highs**

16 vs. Fresno St. 11/17/07

12 vs. Wyoming 2/2/08

4 @ Utah St. 12/29/07

**Career Highs**

22 vs. SCU 11/22/06

same

5 vs. TCU 02/01/07

4 @ UNM 01/10/07

4 @ AF 01/06/07

2 vs. SDSU 02/24/07

◆ **Cassie King** ◆

Center

6-3, Junior

Provo, UT

# 54



**At BYU**

**JUNIOR - (2007-08):** Has played in all 22 games to date, starting in two ... grabbed a new season high in boards with eight in the game at UNLV on 2/16/08 ... picked up 10 points vs. Wyoming on 2/2/08 marking her third double digit output of the year, and was perfect from the field 5-5 ... tied her season high in rebounds with six vs. UNLV on 01/16/08 ... picked up new season and career highs in points with 13 vs. UCLA on 12/15/07 ... had 10 points at Weber State on 12/12/07 ... averages 4.9 points and 3.1 rebounds per game.

**SOPHOMORE - (2006-2007):** Final players notes: Played in 32 of 33 games ... had doubled the number of points, assists and steals as of 01/29/07 from her freshman year ... finished the season with a total of 111 points, 12 assists and seven steals ... tied for fourth place in the blocked shots category with a total of 14 on the year ... averaged 11.6 points of playing time ... grabbed nine rebounds @ UVSC on 12/16/06 for a new season and career high in that category .... in that same game @ UVSC had two blocked shots ... picked up new season and career highs in points with 11 @ Harvard on 11/29/06.

**Statistics**

Yr	G/GS	FG-FGA %	FT-FTA %	3-pts %	Pts.	Reb.	A.	BL.	St.	TO.
06	23/0	7-22.318	9-12.750	0-1 .000	23	30	1	7	2	6
07	32/0	45-95.474	16-27.600	5-18.593	111	84	12	14	7	36
08	22/2	37-72 .514	30-40 .750	3-5 .600	107	69	14	14	7	28

**King**

**Points:**

**Rebounds:**

**Steals:**

**Blocks:**

**Season Highs**

13 vs. UCLA 12/15/07

7 @ UNLV 02/16/08

**Career Highs**

same

9 @ UVSC 12/16/06

2 @ Harvard 11/29/06

2 @ UVSC 12/16/06

◆ **Jaime Judkins** ◆  
Guard  
5-6, Sophomore  
Salt Lake City, UT

# 13



**At BYU**

**SOPHOMORE - (2007-08):** Has played in 20 of the 22 games to date, starting in the game at Sacred Heart on 12/01/07 ... is averaging 0.9 points and 0.6 rebounds per game ... is playing an average of 7.4 minutes per game.

**FRESHMAN - (2006-2007):** Final player notes: Played in a total of 23 games averaging 3.1 minutes of playing time ... of those 23 contests, eight were against conference opponents and she also saw action in the NCAA first round game vs. Louisville on 03/17/07 ... picked up a season high in points with three in the first game of the year vs. ISU on 11/10/06 ... grabbed a season and career high rebounds with three @ Baylor on 11/16/06 ... dished out a season and career high three assists vs. AF on 02/08/07, and in that same game played a new season and career high 13 minutes.

**Statistics**

Yr	G/GS	FG-FGA %	FT-FTA %	3-pts %	Pts.	Reb.	A.	BL.	St.	To.
07	23/0	1-6 .167	2-5 .400	1-4 .250	5	13	7	0	2	11
08	20/1	5-24 .208	4-4 1.000	4-20 .200	18	11	15	0	4	15

**Judkins**

**Points:**

**Rebounds:**

**3-PT FG's made:**

**Assists:**

**Steals:**

**Season Highs**

5 @ UCSB 11/09/07

3 @ UCSB 11/09/07

3 @ Weber St 12/12/07

**Career Highs**

same

3 @ Baylor 11/16/06

3 vs. AF 02/08/07

1 vs. AF 02/08/07



◆ **Lauren Nichols** ◆  
Forward  
6-0, Freshman  
Irvine, CA

# 0



**At BYU**

**FRESHMAN - (2007-08):** Has played in eight of 21 games to date ... is averaging 3.0 minutes of playing time.

**FRESHMAN - (2006-2007):** Redshirt

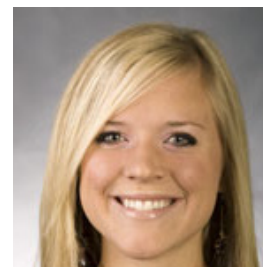
**BEFORE BYU:** Three-year basketball letterwinner ... Coach's Award senior year ... Mojave River League All-League ... Mojave River League Senior Award ... Outstanding Player Award at 13th Annual High Desert All-Star game ... team played in the semifinals of the CIF Southern Section Championships ... Principal's Honor Roll ... National Honor Roll ... Scholar Athlete ... 2006 attendant at the National Youth Leadership Forum on Defense, Intelligence, and Diplomacy ... 2005 Congressional Student Leadership Conference attendee ... two-year letterwinner in track and field and one year letterwinner in volleyball ... CIF Southern Section Volleyball Championships Quarterfinals in 2005 .. Division 2AA Track Championships in high jump, triple jump, long jump in 2005 and 2006 ... All-league in track and field in the high jump, triple jump, long jump and discuss ... Played for the West Coast Elite Basketball Club Team for two years ... 2004 AGS All-America Award ... 2004 AGS Super 60 ... 2002 AGS Elite 80 ... People to People Sports Ambassador ... Blue Chip All-Star ... Street and Smith All-America Honorable Mention ... USA Junior Nationals All-State High School competition attendee.

**Statistics**

Yr	G/GS	FG-FGA %	FT-FTA %	3-pts %	Pts.	Reb.	A.	BL.	St.	TO.
08	8/0	0-3 .000	3-6 .500	0-0 .000	3	1	1	1	1	3

◆ **Sarah Red** ◆  
Guard/Forward  
5-11, Junior  
Provo, UT

# 14



**At BYU**

**JUNIOR - (2007-08):** Has played in 14 of the 22 games played to date ... in the home game vs. CSU on 2/13/08 grabbed a season and career high three boards ... picked up season and career highs in points with seven at SDSU on 01/23/08 ... is averaging 5.1 minutes of playing time and 2.5 points per game.

**2006-07:** (Redshirt)

**OTHER COLLEGE - At Utah:** Freshman (2004-05): Played in eight games for an average of 3.6 minutes ... of those games four were on the road ... picked up a season high three points @AF on 01/20/05 ... finished the season with an 12.5 field goal percentage and 50.0 free throw percentage.

**BEFORE BYU:** Four-year letterwinner in basketball ... earned all-state honors for Timpview High School as a senior ... played for a four-time regional championship team ... helped lead team to state championship game ... named MVPlayer at the Nike Tourn. of Champions ... played for Utah Pride an A.A.U. team ... four-year letterwinner in volleyball ... garnered all-state honors.

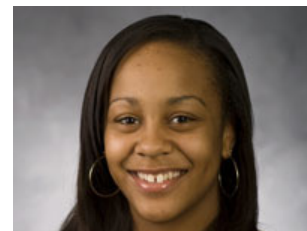
**Statistics**

Yr	G/GS	FG-FGA %	FT-FTA %	3-pts %	Pts.	Reb.	A.	BL.	St.	TO.
08	14/0	12-27 .444	5-6 .833	6-11 .545	35	4	2	0	3	2

## INCOMING FRESHMEN PLAYER BIOS

◆ Jazmine Foreman ◆  
Guard  
5-5, Freshman  
Vancouver, WA

# 3



**AT BYU: FRESHMAN - (2007-08):** Has started in nine of the 22 games played to date, and has played in all games ... is averaging 2.1 points and 1.0 rebounds and is third best in assists, dishing out 36 so far this season ... picked up a new season high in assists with eight vs. Utah Valley State on 12/08/07.

**BEFORE BYU**

Four-year letterwinner in basketball ... team MVP (2006-07) ... team captain ... First Team All-State ... graduated with honors ... honor roll ... played on Premier Elite Club Team for two years ... named to Oregon City All-Tournament Team.

**Statistics**

Yr	G/GS	FG-FGA %	FT-FTA %	3-pts %	Pts.	Reb.	A.	BL.	St.	TO.
08	22/9	15-63 .238	8-14 .571	8-30 .267	46	22	36	0	8	38

Foreman	Season Highs	Career Highs
<b>Points:</b>	8 vs. Fresno St. 11/17/07	same
<b>Rebounds:</b>	3 @ Ark. St. 11/13/07	same
<b>3-PT FG's made:</b>	2 @ UNM 01/26/08	same
<b>Assists:</b>	8 vs. Utah Valley 12/08/07	same
<b>Steals:</b>	3 vs. Seton Hall 11/23/07	same

◆ **Mindy Nielson** ◆  
Guard  
5-10, Freshman  
Centennial, CO

# 22



**AT BYU: FRESHMAN - (2007-08):** started in the last 12 games beginning with the game vs. UCLA on 12/15/07 ... has played in all games averaging 26.9 minutes of playing time ... tallied a new season and career high in points with 16 at UNLV on 2/16/08 ... in the home game vs CSU on 02/13/08 dished out new season and career highs in assists with nine .... had back-to-back games where she scored in double figures picking up season and career highs in points with 15 in the game vs. UCLA on 12/15/07 and 15 points at Weber St., on 12/12/07 ... in the game vs. UCLA also picked up season highs in rebounds with seven and in assists with six ... picked up season and career highs in steals (5), and blocks (5) vs. Utah Valley on 12/08/07 ... has scored in double figures in seven games to date ... is currently fourth on the team in scoring with an average of 7.4 points per game ... is in first place on the team in assists with 63 to date.

**BEFORE BYU**

Four-year letterwinner in basketball ... First Team All-State ... high school Honor Roll ... played three seasons for Mile Hi Magic ... third place finish in Oregon City tournament ... First Team All-State.

**Statistics**

Yr	G/GS	FG-FGA %	FT-FTA %	3-pts %	Pts.	Reb.	A.	BL.	St.	TO.
08	22/12	57-151 .377	36-54 .667	13-41 .317	163	67	63	16	36	70

**Nielson**

**Points:**

**Rebounds:**

**3-PT FG's made:**

**Assists:**

**Steals:**

**Blocks:**

**Season Highs**

16 @ UNLV 02/16/08

7 vs. UCLA 12/15/07

9 vs. CSU 02/13/08

5 vs. Utah Valley 12/08/07

5 vs. Utah Valley 12/08/07

**Career Highs**

same

same

same

same

same

◆ **Keilani Moeaki** ◆

Forward  
6-2, Freshman  
Warrenville, IL

# 45



**AT BYU: FRESHMAN - (2007-08):** Has played in all 22 games to date, starting in nine ... is averaging of 18.2 minutes per game ... picked up a season and career high 19 points and seven rebounds vs. Hartford on 11/20/07 ... currently ranks sixth in scoring on the team with 4.5 points and is fourth in the rebound category, grabbing 3.5 boards per contest.

**BEFORE BYU**

Four-year letterwinner in basketball ... team MVP all four years ... second leading career scorer at high school ... second leading career rebounder at high school ... two-time MVP at Benet Tournament ... three-time All-Tournament Team in Shaumburg Tournament ... 2007 Walter Payton Player of the Year ... Captain All-Area Team in 2007 ... three-time All-Area ... four-time Anonymous All-Conference ... named Top 20 players in Illinois ... three-time All-State player ... ranked 51st nationally and ranked 11th in position nationally ... letterwinner in tennis ... was All-Conference Champs as part of no. 2 doubles team during sophomore season ... played two seasons for Illinois Full Package.

**Statistics**

Yr	G/GS	FG-FGA %	FT-FTA %	3-pts %	Pts.	Reb.	A.	BL.	St.	TO.
08	22/9	37-80 .463	25-38 .658	1-2 .500	100	77	24	6	8	58

**Moeaki**

	Season Highs
<b>Points:</b>	19 vs. Hartford 11/20/07
<b>Rebounds:</b>	7 vs. Hartford 11/20/07, one more
<b>3-PT FG's made:</b>	
<b>Assists:</b>	3 vs. UCLA 12/15/07, once more
<b>Steals:</b>	3 vs. Hartford 11/20/07

**Career Highs**

same
same
same
same
same

◆ **Coriann Wood** ◆  
Forward  
6-1, Freshman  
Basin City, WA

# 23



**AT BYU: FRESHMAN - (2007-08):** Has played in 20 of the 22 games and started in one to date, at Sacred Heart on 12/01/07 ... is averaging of 9.7 minutes of playing time, is scoring 3.2 points and 2.1 boards per game ... picked up a season high in points with 13 and in three-pointers made with three at CSU on 01/12/08 ... grabbed a season high in rebounds with five at UConn on 11/29/07.

**BEFORE BYU**

Four-year letterwinner in basketball ... two-time First Team All-League ... Third Team All-State ... two-time league MVP ... First Team All-Area ... Honorable Mention ... team was league champs in 2003-04 and finished second in the district ... in 2004-05 team finished second in the league and eighth at the 2A State Tournament ... was voted best rebounder on the team and was the leading scorer in the league with an average of 17.3 ppg ... was team captain in 2006-07 ... voted best rebounder and scorer ... voted most athletic ... and was leading scorer in league with 21.0 ppg ... was district tournament MVP ... named MVP All-Area ... 1A state tournament MVP ... named Associated Press First Team ... all-time leading scorer at high school with (1,403 pts.) ... Tri-city Herald Female Athlete of the Year ... four-year letterwinner in track and field ... team was district champs in 2003-04 ... Third Team All-League ... in javelin was first in league and second in district ... in 2004-05 finished fifth in 2A state and second in district in the discus ... and first and fifth in 4x200 ... in 2005-06 broke school record in discus and team was league and district champs. ... four-year letterwinner in soccer ... team MVP and captain senior year ... three-time Second Team All-League ... team was league and district champs during two seasons ... was on the Superintendent's List Honor Roll all four years and also had a 4.0 GPA all four years.

**Statistics**

Yr	G/GS	FG-FGA %	FT-FTA %	3-pts %	Pts.	Reb.	A.	BL.	St.	TO.
08	20/1	22-66 .333	13-15 .867	6-34 .176	63	42	5	3	4	19

**Wood**

**Points:**

**Rebounds:**

**3-PT FG's made:**

**Assists:**

**Steals:**

**Season Highs**

13 @ CSU 01/12/08

5 @ UConn 11/29/07

3 @ CSU on 01/12/08

**Career Highs**

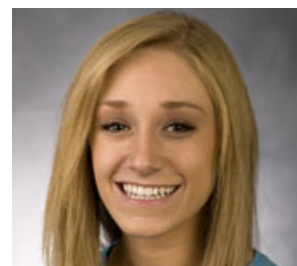
same

same

same

◆ **Stephanie Buhler** ◆

# 21



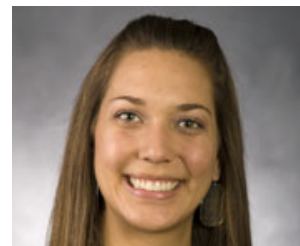
Forward  
6-0, Freshman  
Oregon City, OR

**BEFORE BYU**

Four-year letterwinner in basketball ... competed one year at Sandy HS where she garnered Honorable Mention honors. At Oregon City HS ...team was Three Rivers League Champions all three seasons ... named Second Team All- League her senior year ... ranks third all time in three-point shooting ... is also tops in the free throw category ... garnered Second Team All League honors during the 2006-07 season ... ranks second in state as a three-point shooter ... two-time Honorable Mention All State ... named Oregonian Athlete of the Week ... named to the All-Tournament Team at the Delaware and the Gillett, Wyoming Classics ... in state high school competition, the 2004-05 team finished third ... in 2005-06 team finished second and in 2006-07 team ended the year in sixth place ... Played on two club teams (Triple Threat Oregon two years) ... and on (Clutch Players for three years).

◆ **Megan Marks** ◆

# 55



Forward  
6-2, Freshman  
South Jordan, UT

**AT BYU: FRESHMAN - (2007-08):** Has played in 10 of the 22 games to date ... is averaging 3.0 minutes of playing time.

**BEFORE BYU**

Four-year letterwinner in basketball ... team MVP ... Leadership Award ... Team Captain ... Female Athlete of the Year ... Region MVP ... All Region Team ... All-State ... 5A MVP ... team won 2007 State Champs ... Street & Smith Honorable Mention ... four-year letterwinner in volleyball ... All Region ... Team MVP ... four-year high school Honor Roll ... played two seasons for Utah Sky ... team captain.

**Statistics**

Yr	G/GS	FG-FGA %	FT-FTA %	3-pts %	Pts.	Reb.	A.	BL.	St.	TO.
08	10/0	1-8 .125	1-3 .333	0-3 .000	3	10	1	1	0	1

## **WALK-ON PLAYER BIOS**

◆ **Amy Alletto** ◆

Guard

5-9, Sophomore

Parker, CO

**# 31**



**AT BYU:**

**SOPHOMORE - (2007-08):** has played in three games to date, most recently in the home league game vs. Utah on 01/19/08 ... at CSU on 01/12/08 and in the home game vs. Hartford on 11/20/07.

**BEFORE BYU**

Four-year letterwinner in basketball ... Heart Award 2004 ... Best Defensive Player 2005 ... Team MVP 2005 and 2006 ... 2006 Most Inspirational Award ... team captain in 2006 ... Region Honorable Mention in 2004 and 2005 ... Second Team All-Conference in 2006 ... First Team Academic Award 2006 ... four-year letterwinner in cross country ... Second Team All-League in cross country ... four-year letterwinner in track and field ... placed fifth, eleventh and eighth place in shot put ... First-Team All-Region in shot put ... National Honor Society ... Social Studies Student Award.

◆ **Marie Beck** ◆

Guard

5-8, Freshman

Oxnard, CA

**# 10**



**AT BYU:**

**FRESHMAN - (2007-08):** Has seen action in three games so far this season.

**BEFORE BYU**

School Valedictorian, Ventura County Star Athlete ... AP Scholar ... Top Honors Scholar ... Three-year letterwinner in basketball ... MVP in 2007 ... Athlete of the Year in 2007 ... Second Team All League in 2006 ... First Team All League 2007 ... Second Team All County 2007 ... four-year letterwinner in softball ... three time softball MVP 2005-2007.

◆ Marianne Bell ◆  
Forward  
6-1, Freshman  
Ashburn, VA

# 34



**BEFORE BYU**

National Honor Society ... Athletic Honor Roll ... four-year letterwinner in basketball (three at Stone Bridge HS and one at Bruton HS) ... Co-MVP in 2006 ... MVP in 2007 ... holds school (Stone Bridge) record for most points scored in a season and career ... hold record for most rebounds in a season and career ... Second Team All District (2005 and 2006) ... First Team All-District in 2007 ... First Team All-Region in 2007 ... two-year letterwinner in volleyball ... First Team All- District and Region in 2007... Second Team All-District 2006 ... Honorable Mention All-State 2007 ... one-year letterwinner in tennis ... played one season for Potomac Valley Vogues ... team finished ninth at the AAU nationals in 2006.



**Brigham Young University**  
**Brigham Young University Combined Team Statistics (as of Feb 16, 2008)**  
**All games**

<b>RECORD :</b>	<b>OVERALL</b>	<b>HOME</b>	<b>AWAY</b>	<b>NEUTRAL</b>
<b>ALL GAMES . . . . .</b>	<b>(12-10)</b>	<b>(8-3)</b>	<b>(4-7)</b>	<b>(0-0)</b>
<b>CONFERENCE . . . . .</b>	<b>(6-4)</b>	<b>(4-1)</b>	<b>(2-3)</b>	<b>(0-0)</b>
<b>NON-CONFERENCE . . . . .</b>	<b>(6-6)</b>	<b>(4-2)</b>	<b>(2-4)</b>	<b>(0-0)</b>

## Player	GP-GS	Min--Avg	---TOTAL---		---3-PTS---		FT-FTA	Pct	----REBOUNDS----				PF	FO	A	TO	Blk	Stl	Pts	Avg
			FG-FGA	Pct	3FG-FGA	Pct			Off	Def	Tot	Avg								
30 CARLING, Mallery...	22-22	787 35.8	109-283	.385	51-149	.342	43-52	.827	11	75	86	3.9	40	2	60	76	10	29	312	14.2
32 SLADE, Shawnee....	22-22	670 30.5	70-195	.359	22-72	.306	8-19	.421	40	83	123	5.6	57	1	34	45	5	20	170	7.7
52 VARLEY, Lauren....	22-22	571 26.0	78-155	.503	0-1	.000	13-35	.371	66	125	191	8.7	61	0	31	52	31	18	169	7.7
22 NIELSON, Mindy....	22-12	591 26.9	57-151	.377	13-41	.317	36-54	.667	9	58	67	3.0	38	1	63	70	16	36	163	7.4
54 KING, Cassie.....	22-2	317 14.4	37-72	.514	3-5	.600	30-40	.750	27	42	69	3.1	41	0	14	28	14	7	107	4.9
45 MOEAKI, Keilani...	22-9	400 18.2	37-80	.463	1-2	.500	25-38	.658	31	46	77	3.5	41	0	24	58	6	8	100	4.5
23 WOOD, Coriann....	20-1	194 9.7	22-66	.333	6-34	.176	13-15	.867	9	33	42	2.1	28	0	5	19	3	4	63	3.2
14 RED, Sarah.....	14-0	72 5.1	12-27	.444	6-11	.545	5-6	.833	1	3	4	0.3	4	0	2	2	0	3	35	2.5
05 Cheesman, Ashley...	22-10	265 12.0	19-50	.380	0-1	.000	9-15	.600	14	32	46	2.1	25	0	12	18	2	4	47	2.1
03 Foreman, Jazmine...	22-9	348 15.8	15-63	.238	8-30	.267	8-14	.571	1	21	22	1.0	43	2	36	38	0	8	46	2.1
13 JUDKINS, Jaime....	20-1	148 7.4	5-24	.208	4-20	.200	4-4	1.000	4	7	11	0.6	13	0	15	15	0	4	18	0.9
00 Nichols, Lauren....	8-0	24 3.0	0-3	.000	0-0	.000	3-6	.500	0	1	1	0.1	3	0	1	3	1	1	3	0.4
31 ALLETO, Amy.....	3-0	2 0.7	0-1	.000	0-0	.000	1-2	.500	0	0	0	0.0	0	0	1	0	1	1	1	0.3
55 MARKS, Megan.....	10-0	30 3.0	1-8	.125	0-3	.000	1-3	.333	2	8	10	1.0	7	0	1	1	0	3	0.3	
34 BELL, Marianne....	5-0	3 0.6	0-1	.000	0-0	.000	0-0	.000	1	0	1	0.2	2	0	0	0	0	0	0	0.0
12 JACKSON, Brooke...	3-0	3 1.0	0-2	.000	0-1	.000	0-0	.000	0	0	0	0.0	0	0	0	0	0	0	0	0.0
11 JACKSON, AMY.....	1-0	0 0.0	0-1	.000	0-0	.000	0-0	.000	0	0	0	0.0	0	0	0	0	0	0	0	0.0
10 BECK, Marie.....	3-0	0 0.0	0-0	.000	0-0	.000	0-0	.000	0	1	1	0.3	0	0	0	0	0	0	0	0.0
TEAM.....									40	79	119	5.4	0			9				
Total.....	22	4425	462-1182	.391	114-370	.308	199-303	.657	256	614	870	39.5	403	6	298	435	89	143	1237	56.2
Opponents.....	22	4425	435-1269	.343	100-351	.285	281-431	.652	302	529	831	37.8	323	-	231	339	51	201	1251	56.9

TEAM STATISTICS	BY	OPP	DATE	OPPONENT	W/L	SCORE	ATTEND
SCORING.....	1237	1251	11/09/08	at UC Santa Barbara	W	61-50	882
Points per game.....	56.2	56.9	11/13/07	at Arkansas State	L	53-54	1729
Scoring margin.....	-0.6	-	11-17-07	FRESNO STATE	W	78-59	546
FIELD GOALS-ATT.....	462-1182	435-1269	11-20-07	HARTFORD UNIVERSITY	L	59-70	646
Field goal pct.....	.391	.343	11-23-07	SETON HALL	W	47-43	703
3 POINT FG-ATT.....	114-370	100-351	11/29/07	at Connecticut	L	34-80	10752
3-point FG pct.....	.308	.285	12/01/07	at Sacred Heart	L	44-49	461
3-pt FG made per game..	5.2	4.5	12-05-07	NEW MEXICO STATE	L	52-54	512
FREE THROWS-ATT.....	199-303	281-431	12-8-07	UT VALLEY WOLVERINES	W	72-52	484
Free throw pct.....	.657	.652	12/12/07	at Weber State	L	54-65	1921
REBOUNDS.....	870	831	12-15-07	UCLA	W	68-58	655
Rebounds per game.....	39.5	37.8	12/29/07	at Utah State	W	70-64	860
Rebounding margin.....	+1.8	-	*01/12/08	at Colorado State	W	60-39	1174
ASSISTS.....	298	231	*01-16-08	UNLV	W	67-55	559
Assists per game.....	13.5	10.5	*01-19-08	UNIVERSITY OF UTAH	L	49-80	6206
TURNOVERS.....	435	339	*1-23-08	at SAN DIEGO STATE	L	39-62	747
Turnovers per game.....	19.8	15.4	*1/26/08	at University of New Mex	W	41-38	8975
Turnover margin.....	-4.4	-	*01-30-08	AIR FORCE ACADEMY	W	52-47	516
Assist/turnover ratio..	0.7	0.7	*02-02-08	UNIVERSITY OF WYOMIN	W	56-42	929
STEALS.....	143	201	*2/5/08	at TCU	L	54-73	2101
Steals per game.....	6.5	9.1	*02-13-08	COLORADO STATE	W	59-44	605
BLOCKS.....	89	51	*02/16/08	at UNLV	LOT	68-73	1386
Blocks per game.....	4.0	2.3					
WINNING STREAK.....	0	-					
Home win streak.....	3	-					
ATTENDANCE.....	12361	30988					
Home games-Avg/Game....	11-1124	11-2817					
Neutral site-Avg/Game..	-	0-0					

SCORE BY PERIODS:	1st	2nd	OT	Total
Brigham Young University.....	569	659	9	1237
Opponents.....	582	655	14	1251

**Brigham Young University**  
**Brigham Young University Combined Team Statistics (as of Feb 16, 2008)**  
**Conference games**

<b>RECORD:</b>	<b>OVERALL</b>	<b>HOME</b>	<b>AWAY</b>	<b>NEUTRAL</b>
<b>ALL GAMES.....</b>	<b>(6-4)</b>	<b>(4-1)</b>	<b>(2-3)</b>	<b>(0-0)</b>
<b>CONFERENCE.....</b>	<b>(6-4)</b>	<b>(4-1)</b>	<b>(2-3)</b>	<b>(0-0)</b>
<b>NON-CONFERENCE.....</b>	<b>(0-0)</b>	<b>(0-0)</b>	<b>(0-0)</b>	<b>(0-0)</b>

## Player	GP-GS	Min--Avg	---TOTAL---		---3-PTS---		---FT-FTA		----REBOUNDS----				PF	FO	A	TO	Blk	Stl	Pts	Avg
			FG-FGA	Pct	3FG-FGA	Pct	Pct	Off	Def	Tot	Avg									
30 CARLING, Mallery...	10-10	362 36.2	52-126	.413	23-61	.377	19-23	.826	7	30	37	3.7	20	1	20	27	6	16	146	14.6
22 NIELSON, Mindy.....	10-10	306 30.6	27-78	.346	5-17	.294	22-28	.786	2	29	31	3.1	20	1	44	37	6	20	81	8.1
32 SLADE, Shawnee.....	10-10	306 30.6	35-88	.398	7-32	.219	1-3	.333	7	43	50	5.0	25	1	14	15	2	7	78	7.8
52 VARLEY, Lauren.....	10-10	243 24.3	30-61	.492	0-1	.000	6-13	.462	35	57	92	9.2	25	0	16	32	15	6	66	6.6
54 KING, Cassie.....	10-0	144 14.4	14-32	.438	1-2	.500	9-11	.818	15	17	32	3.2	16	0	5	12	6	4	38	3.8
05 CHEESMAN, Ashley...	10-6	152 15.2	12-32	.375	0-1	.000	7-12	.583	8	19	27	2.7	13	0	6	9	2	2	31	3.1
14 RED, Sarah.....	10-0	66 6.6	10-24	.417	5-10	.500	3-4	.750	1	3	4	0.4	3	0	2	1	0	3	28	2.8
23 WOOD, Coriann.....	10-0	104 10.4	11-40	.275	5-22	.227	0-0	.000	4	15	19	1.9	16	0	2	9	3	0	27	2.7
45 MOEAKI, Keilani....	10-4	158 15.8	7-21	.333	1-2	.500	8-12	.667	13	17	30	3.0	14	0	9	20	1	6	23	2.3
03 FOREMAN, Jazmine...	10-0	112 11.2	5-20	.250	3-11	.273	4-7	.571	1	10	11	1.1	19	1	10	16	0	2	17	1.7
13 JUDKINS, Jaime.....	9-0	53 5.9	2-11	.182	2-9	.222	2-2	1.000	1	1	2	0.2	5	0	2	5	0	1	8	0.9
55 MARKS, Megan.....	6-0	14 2.3	1-7	.143	0-3	.000	0-0	.000	0	5	5	0.8	2	0	0	1	0	0	2	0.3
31 ALLETO, Amy.....	1-0	1 1.0	0-0	.000	0-0	.000	0-0	.000	0	0	0	0.0	0	0	0	0	0	0	0	0.0
00 NICHOLS, Lauren....	1-0	1 1.0	0-0	.000	0-0	.000	0-0	.000	0	0	0	0.0	0	0	0	0	0	0	0	0.0
11 JACKSON, AMY.....	1-0	0 0.0	0-1	.000	0-0	.000	0-0	.000	0	0	0	0.0	0	0	0	0	0	0	0	0.0
34 BELL, Marianne....	2-0	3 1.5	0-1	.000	0-0	.000	0-0	.000	1	0	1	0.5	2	0	0	0	0	0	0	0.0
TEAM.....									15	41	56	5.6	0		4					

Total.....	10	2025	206-542	.380	52-171	.304	81-115	.704	110	287	397	39.7	180	4	130	188	41	67	545	54.5
Opponents.....	10	2025	187-574	.326	43-161	.267	136-194	.701	139	245	384	38.4	133	-	102	148	26	78	553	55.3

TEAM STATISTICS	BY	OPP	DATE	OPPONENT	W/L	SCORE	ATTEND
SCORING.....	545	553	*01/12/08	at Colorado State	W	60-39	1174
Points per game.....	54.5	55.3	*01-16-08	UNLV	W	67-55	559
Scoring margin.....	-0.8	-	*01-19-08	UNIVERSITY OF UTAH	L	49-80	6206
FIELD GOALS-ATT.....	206-542	187-574	*1-23-08	at SAN DIEGO STATE	L	39-62	747
Field goal pct.....	.380	.326	*1/26/08	at University of New Mex	W	41-38	8975
3 POINT FG-ATT.....	52-171	43-161	*01-30-08	AIR FORCE ACADEMY	W	52-47	516
3-point FG pct.....	.304	.267	*02-02-08	UNIVERSITY OF WYOMIN	W	56-42	929
3-pt FG made per game..	5.2	4.3	*2/5/08	at TCU	L	54-73	2101
FREE THROWS-ATT.....	81-115	136-194	*02-13-08	COLORADO STATE	W	59-44	605
Free throw pct.....	.704	.701	*02/16/08	at UNLV	LOT	68-73	1386
REBOUNDS.....	397	384					
Rebounds per game.....	39.7	38.4					
Rebounding margin.....	+1.3	-					
ASSISTS.....	130	102					
Assists per game.....	13.0	10.2					
TURNOVERS.....	188	148					
Turnovers per game.....	18.8	14.8					
Turnover margin.....	-4.0	-					
Assist/turnover ratio..	0.7	0.7					
STEALS.....	67	78					
Steals per game.....	6.7	7.8					
BLOCKS.....	41	26					
Blocks per game.....	4.1	2.6					
WINNING STREAK.....	0	-					
Home win streak.....	3	-					
ATTENDANCE.....	8815	14383					
Home games-Avg/Game....	5-1763	5-2877					
Neutral site-Avg/Game..	-	0-0					

SCORE BY PERIODS:	1st	2nd	OT	Total
Brigham Young University.....	235	301	9	545
Opponents.....	267	272	14	553

**Brigham Young University**  
**Brigham Young University Overall/Conference Statistics (as of Feb 16, 2008)**  
**All games**

SUMMARY	OVERALL STATISTICS										CONFERENCE STATISTICS									
	GP-GS	Min/G	FG%	3PT%	FT%	R/G	A/G	STL	BLK	PTS/G	GP-GS	Min/G	FG%	3PT%	FT%	R/G	A/G	STL	BLK	PTS/G
CARLING, Mallery....	22-22	35.8	.385	.342	.827	3.9	2.7	29	10	14.2	10-10	36.2	.413	.377	.826	3.7	2.0	16	6	14.6
SLADE, Shawnee.....	22-22	30.5	.359	.306	.421	5.6	1.5	20	5	7.7	10-10	30.6	.398	.219	.333	5.0	1.4	7	2	7.8
VARLEY, Lauren.....	22-22	26.0	.503	.000	.371	8.7	1.4	18	31	7.7	10-10	24.3	.492	.000	.462	9.2	1.6	6	15	6.6
NIELSON, Mindy.....	22-12	26.9	.377	.317	.667	3.0	2.9	36	16	7.4	10-10	30.6	.346	.294	.786	3.1	4.4	20	6	8.1
KING, Cassie.....	22-2	14.4	.514	.600	.750	3.1	0.6	7	14	4.9	10-0	14.4	.438	.500	.818	3.2	0.5	4	6	3.8
MOEAKI, Keilani.....	22-9	18.2	.463	.500	.658	3.5	1.1	8	6	4.5	10-4	15.8	.333	.500	.667	3.0	0.9	6	1	2.3
WOOD, Coriann.....	20-1	9.7	.333	.176	.867	2.1	0.3	4	3	3.2	10-0	10.4	.275	.227	.000	1.9	0.2	0	3	2.7
RED, Sarah.....	14-0	5.1	.444	.545	.833	0.3	0.1	3	0	2.5	10-0	6.6	.417	.500	.750	0.4	0.2	3	0	2.8
Cheesman, Ashley....	22-10	12.0	.380	.000	.600	2.1	0.5	4	2	2.1	10-6	15.2	.375	.000	.583	2.7	0.6	2	2	3.1
Foreman, Jazmine....	22-9	15.8	.238	.267	.571	1.0	1.6	8	0	2.1	10-0	11.2	.250	.273	.571	1.1	1.0	2	0	1.7
JUDKINS, Jaime.....	20-1	7.4	.208	.200	1.000	0.6	0.8	4	0	0.9	9-0	5.9	.182	.222	1.000	0.2	0.2	1	0	0.9
Nichols, Lauren.....	8-0	3.0	.000	.000	.500	0.1	0.1	1	1	0.4	1-0	1.0	.000	.000	.000	0.0	0.0	0	0	0.0
ALLETO, Amy.....	3-0	0.7	.000	.000	.500	0.0	0.0	1	0	0.3	1-0	1.0	.000	.000	.000	0.0	0.0	0	0	0.0
MARKS, Megan.....	10-0	3.0	.125	.000	.333	1.0	0.1	0	1	0.3	6-0	2.3	.143	.000	.000	0.8	0.0	0	0	0.3
BELL, Marianne.....	5-0	0.6	.000	.000	.000	0.2	0.0	0	0	0.0	2-0	1.5	.000	.000	.000	0.5	0.0	0	0	0.0
JACKSON, Brooke....	3-0	1.0	.000	.000	.000	0.0	0.0	0	0	0.0										
JACKSON, AMY.....	1-0	0.0	.000	.000	.000	0.0	0.0	0	0	0.0	1-0	0.0	.000	.000	.000	0.0	0.0	0	0	0.0
BECK, Marie.....	3-0	0.0	.000	.000	.000	0.3	0.0	0	0	0.0										
Total.....	22		.391	.308	.657	39.5	13.5	143	89	56.2	10		.380	.304	.704	39.7	13.0	67	41	54.5
Opponents.....	22		.343	.285	.652	37.8	10.5	201	51	56.9	10		.326	.267	.701	38.4	10.2	78	26	55.3

SCORING	OVERALL STATISTICS									CONFERENCE STATISTICS										
	FG-FGA	FG%	3FG-FGA	3PT%	FT-FTA	FT%	PTS	PTS/G		FG-FGA	FG%	3FG-FGA	3PT%	FT-FTA	FT%	PTS	PTS/G			
CARLING, Mallery....	109-283	.385	51-149	.342	43-52	.827	312	14.2		52-126	.413	23-61	.377	19-23	.826	146	14.6			
SLADE, Shawnee.....	70-195	.359	22-72	.306	8-19	.421	170	7.7		35-88	.398	7-32	.219	1-3	.333	78	7.8			
VARLEY, Lauren.....	78-155	.503	0-1	.000	13-35	.371	169	7.7		30-61	.492	0-1	.000	6-13	.462	66	6.6			
NIELSON, Mindy.....	57-151	.377	13-41	.317	36-54	.667	163	7.4		27-78	.346	5-17	.294	22-28	.786	81	8.1			
KING, Cassie.....	37-72	.514	3-5	.600	30-40	.750	107	4.9		14-32	.438	1-2	.500	9-11	.818	38	3.8			
MOEAKI, Keilani.....	37-80	.463	1-2	.500	25-38	.658	100	4.5		7-21	.333	1-2	.500	8-12	.667	23	2.3			
WOOD, Coriann.....	22-66	.333	6-34	.176	13-15	.867	63	3.2		11-40	.275	5-22	.227	0-0	.000	27	2.7			
RED, Sarah.....	12-27	.444	6-11	.545	5-6	.833	35	2.5		10-24	.417	5-10	.500	3-4	.750	28	2.8			
Cheesman, Ashley....	19-50	.380	0-1	.000	9-15	.600	47	2.1		12-32	.375	0-1	.000	7-12	.583	31	3.1			
Foreman, Jazmine....	15-63	.238	8-30	.267	8-14	.571	46	2.1		5-20	.250	3-11	.273	4-7	.571	17	1.7			
JUDKINS, Jaime.....	5-24	.208	4-20	.200	4-4	1.000	18	0.9		2-11	.182	2-9	.222	2-2	1.000	8	0.9			
Nichols, Lauren.....	0-3	.000	0-0	.000	3-6	.500	3	0.4		0-0	.000	0-0	.000	0-0	.000	0	0.0			
ALLETO, Amy.....	0-1	.000	0-0	.000	1-2	.500	1	0.3		0-0	.000	0-0	.000	0-0	.000	0	0.0			
MARKS, Megan.....	1-8	.125	0-3	.000	1-3	.333	3	0.3		1-7	.143	0-3	.000	0-0	.000	2	0.3			
BELL, Marianne.....	0-1	.000	0-0	.000	0-0	.000	0	0.0		0-1	.000	0-0	.000	0-0	.000	0	0.0			
JACKSON, Brooke....	0-2	.000	0-1	.000	0-0	.000	0	0.0												
JACKSON, AMY.....	0-1	.000	0-0	.000	0-0	.000	0	0.0		0-1	.000	0-0	.000	0-0	.000	0	0.0			
BECK, Marie.....	0-0	.000	0-0	.000	0-0	.000	0	0.0												
Total.....	462-1182	.391	114-370	.308	199-303	.657	1237	56.2		206-542	.380	52-171	.304	81-115	.704	545	54.5			
Opponents.....	435-1269	.343	100-351	.285	281-431	.652	1251	56.9		187-574	.326	43-161	.267	136-194	.701	553	55.3			

TOTALS	OVERALL STATISTICS										CONFERENCE STATISTICS									
	O-REB	D-REB	TOTAL	PF	FO	A	TO	A/TO	Hi	Pts	O-REB	D-REB	TOTAL	PF	FO	A	TO	A/TO	Hi	Pts
CARLING, Mallery....	11	75	86	40	2	60	76	0.8	26		7	30	37	20	1	20	27	0.7	26	
SLADE, Shawnee.....	40	83	123	57	1	34	45	0.8	16		7	43	50	25	1	14	15	0.9	14	
VARLEY, Lauren.....	66	125	191	61	0	31	52	0.6	16		35	57	92	25	0	16	32	0.5	14	
NIELSON, Mindy.....	9	58	67	38	1	63	70	0.9	16		2	29	31	20	1	44	37	1.2	16	
KING, Cassie.....	27	42	69	41	0	14	28	0.5	13		15	17	32	16	0	5	12	0.4	10	
MOEAKI, Keilani.....	31	46	77	41	0	24	58	0.4	19		13	17	30	14	0	9	20	0.5	7	
WOOD, Coriann.....	9	33	42	28	0	5	19	0.3	13		4	15	19	16	0	2	9	0.2	13	
RED, Sarah.....	1	3	4	4	0	2	2	1.0	7		1	3	4	3	0	2	1	2.0	7	
Cheesman, Ashley....	14	32	46	25	0	12	18	0.7	10		8	19	27	13	0	6	9	0.7	10	
Foreman, Jazmine....	1	21	22	43	2	36	38	0.9	8		1	10	11	19	1	10	16	0.6	6	
JUDKINS, Jaime.....	4	7	11	13	0	15	15	1.0	5		1	1	2	5	0	2	5	0.4	3	
Nichols, Lauren.....	0	1	1	3	0	1	3	0.3	2		0	0	0	0	0	0	0	0.0	0	
ALLETO, Amy.....	0	0	0	0	0	0	1	0.0	1		0	0	0	0	0	0	0	0.0	0	
MARKS, Megan.....	2	8	10	7	0	1	1	1.0	2		0	5	5	2	0	0	1	0.0	2	
BELL, Marianne.....	1	0	1	2	0	0	0	0.0	0		1	0	1	2	0	0	0	0.0	0	
JACKSON, Brooke....	0	0	0	0	0	0	0	0.0	0									0.0	0	
JACKSON, AMY.....	0	0	0	0	0	0	0	0.0	0		0	0	0	0	0	0	0	0.0	0	
BECK, Marie.....	0	1	1	0	0	0	0	0.0	0									0.0	0	
Total.....	256	614	870	403	6	298	435	0.7	78		110	287	397	180	4	130	188	0.7	68	
Opponents.....	302	529	831	323	-	231	339	0.7	80		139	245	384	133	2	102	148	0.7	80	

**Brigham Young University**  
**Brigham Young University Team Game-by-Game (as of Feb 16, 2008)**  
**All games**

TEAM STATISTICS

Opponent	Date	Score	W/L	---TOTAL---		--3-PTRS--		---FT-FTA---		----REBOUNDS----				PF	A	TO	Blk	Stl	Pts---Avg	
				FG-FGA	Pct	3FG-FGA	Pct	FT-FTA	Pct	Off	Def	Tot	Avg							
at UC Santa Barbara	11/09/08	61-50	W	23-46	.500	5-11	.455	10-14	.714	7	30	37	37.0	22	17	28	5	2	61	61.0
at Arkansas State	11/13/07	53-54	L	24-54	.444	3-16	.188	2-5	.400	15	24	39	38.0	21	11	24	1	4	53	57.0
FRESNO STATE	11-17-07	78-59	W	34-72	.472	5-23	.217	5-10	.500	14	41	55	43.7	17	18	19	4	6	78	64.0
HARTFORD UNIVERSITY	11-20-07	59-70	L	21-56	.375	4-17	.235	13-24	.542	13	23	36	41.8	24	11	16	2	7	59	62.8
SETON HALL	11-23-07	47-43	W	15-45	.333	4-12	.333	13-22	.591	8	29	37	40.8	13	12	19	2	7	47	59.6
at Connecticut	11/29/07	34-80	L	13-50	.260	3-16	.188	5-10	.500	9	21	30	39.0	22	5	21	1	6	34	55.3
at Sacred Heart	12/01/07	44-49	L	16-48	.333	8-20	.400	4-4	1.000	13	17	30	37.7	18	10	19	3	6	44	53.7
NEW MEXICO STATE	12-05-07	52-54	L	19-58	.328	2-18	.111	12-22	.545	15	28	43	38.4	16	13	15	3	6	52	53.5
UT VALLEY WOLVERINES	12-8-07	72-52	W	22-58	.379	8-22	.364	20-28	.714	20	30	50	39.7	15	20	23	12	17	72	55.6
at Weber State	12/12/07	54-65	L	21-48	.438	8-12	.667	4-6	.667	6	23	29	38.6	19	15	20	3	5	54	55.4
UCLA	12-15-07	68-58	W	22-57	.386	9-27	.333	15-23	.652	16	30	46	39.3	17	17	21	4	5	68	56.5
at Utah State	12/29/07	70-64	W	26-48	.542	3-5	.600	15-20	.750	10	31	41	39.4	19	19	22	8	5	70	57.7
at Colorado State	01/12/08	60-39	W	24-65	.369	7-30	.233	5-7	.714	11	31	42	39.6	16	13	16	8	6	60	57.8
UNLV	01-16-08	67-55	W	22-48	.458	2-12	.167	21-28	.750	12	28	40	39.6	20	16	23	3	9	67	58.5
UNIVERSITY OF UTAH	01-19-08	49-80	L	18-52	.346	8-18	.444	5-10	.500	9	21	30	39.0	19	11	16	3	3	49	57.9
at SAN DIEGO STATE	1-23-08	39-62	L	13-46	.283	3-19	.158	10-14	.714	13	23	36	38.8	18	8	31	4	12	39	56.7
at Univesity of New M	1/26/08	41-38	W	15-49	.306	6-17	.353	5-7	.714	14	35	49	39.4	16	10	25	3	10	41	55.8
AIR FORCE ACADEMY	01-30-08	52-47	W	20-56	.357	4-12	.333	8-10	.800	15	25	40	39.4	11	14	13	8	9	52	55.6
UNIVERSITY OF WYOMIN	02-02-08	56-42	W	23-53	.434	5-11	.455	5-6	.833	7	36	43	39.6	17	14	13	3	6	56	55.6
at TCU	2/5/08	54-73	L	25-52	.481	2-7	.286	2-6	.333	6	23	29	39.1	14	13	21	4	3	54	55.5
COLORADO STATE	02-13-08	59-44	W	22-54	.407	6-20	.300	9-14	.643	7	33	40	39.1	16	17	12	4	6	59	55.7
at UNLV	02/16/08	68-73	Lot	24-67	.358	9-25	.360	11-13	.846	16	32	48	39.5	33	14	18	1	3	68	56.2
Brigham Young University		1237		462-1182	.391	114-370	.308	199-303	.657	256	614	870	39.5	403	298	435	89	143	1237	56.2
Opponents		1251		435-1269	.343	100-351	.285	281-431	.652	302	529	831	37.8	323	231	339	51	201	1251	56.9

Games played: 22  
Points/game: 56.2  
FG Pct: 39.1  
3FG Pct: 30.8  
FT Pct: 65.7

Rebounds/game: 39.5  
Assists/game: 13.5  
Turnovers/game: 19.8  
Assist/turnover ratio: 0.7  
Steals/game: 6.5  
Blocks/game: 4.0

Brigham Young University  
 Brigham Young University Game-by-Game Highs (as of Feb 16, 2008)  
 All games

Opponent	Date	Score	WL	POINTS	REBOUNDS	ASSISTS	STEALS	BLOCKED SHOTS
at UC Santa Barbara	11/09/08	61-50	W	17-CARLING, Mall	11-VARLEY, Laure	5-Foreman, Jazm	1-Cheesman, Ash VARLEY, Laure	3-VARLEY, Laure
at Arkansas State	11/13/07	53-54	L	16-VARLEY, Laure	13-VARLEY, Laure	3-CARLING, Mall	1-NIELSON, Mind CHEESMAN, Ash CARLING, Mall VARLEY, Laure	1-SLADE, Shawne
FRESNO STATE	11-17-07	78-59	W	17-CARLING, Mall	13-VARLEY, Laure	5-CARLING, Mall	2-SLADE, Shawne	2-KING, Cassie
HARTFORD UNIVERSITY	11-20-07	59-70	L	19-MOEAKI, Keila	8-SLADE, Shawne	4-CARLING, Mall	3-NIELSON, Mind	2-VARLEY, Laure
SETON HALL	11-23-07	47-43	W	15-CARLING, Mall	8-VARLEY, Laure	2-SLADE, Shawne JUDKINS, Jaim CHEESMAN, Ash VARLEY, Laure	3-FOREMAN, Jazm	1-NIELSON, Mind MOEAKI, Keila
at Connecticut	11/29/07	34-80	L	10-SLADE, Shawne	6-VARLEY, Laure	1-SLADE, Shawne MOEAKI, Keila NICHOLS, Laur CARLING, Mall FOREMAN, Jazm	1-KING, Cassie SLADE, Shawne NIELSON, Mind NICHOLS, Laur WOOD, Coriann FOREMAN, Jazm	1-CARLING, Mall
at Sacred Heart	12/01/07	44-49	L	22-CARLING, Mall	8-VARLEY, Laure	2-JUDKINS, Jaim NIELSON, Mind FOREMAN, Jazm	2-CARLING, Mall	2-VARLEY, Laure
NEW MEXICO STATE	12-05-07	52-54	L	16-CARLING, Mall	11-SLADE, Shawne	6-CARLING, Mall	3-VARLEY, Laure	2-VARLEY, Laure
UT VALLEY WOLVERINES	12-8-07	72-52	W	15-SLADE, Shawne	8-VARLEY, Laure	8-FOREMAN, Jazm	5-NIELSON, Mind	5-NIELSON, Mind
at Weber State	12/12/07	54-65	L	15-NIELSON, Mind	8-VARLEY, Laure	3-JUDKINS, Jaim SLADE, Shawne	1-SLADE, Shawne NIELSON, Mind CARLING, Mall JUDKINS, Jaim FOREMAN, Jazm	2-MOEAKI, Keila
UCLA	12-15-07	68-58	W	16-CARLING, Mall	9-CARLING, Mall	6-NIELSON, Mind	1-WOOD, Coriann NIELSON, Mind KING, Cassie VARLEY, Laure SLADE, Shawne	2-KING, Cassie NIELSON, Mind
at Utah State	12/29/07	70-64	W	19-CARLING, Mall	9-VARLEY, Laure	5-CARLING, Mall	2-NIELSON, Mind	3-VARLEY, Laure
at Colorado State	01/12/08	60-39	W	13-WOOD, Coriann	14-VARLEY, Laure	6-NIELSON, Mind	3-NIELSON, Mind	2-CARLING, Mall WOOD, Coriann NIELSON, Mind VARLEY, Laure
UNLV	01-16-08	67-55	W	26-CARLING, Mall	11-VARLEY, Laure	4-NIELSON, Mind FOREMAN, Jazm	3-SLADE, Shawne	2-VARLEY, Laure
UNIVERSITY OF UTAH	01-19-08	49-80	L	21-CARLING, Mall	9-SLADE, Shawne	4-NIELSON, Mind	2-CARLING, Mall	1-KING, Cassie SLADE, Shawne NIELSON, Mind
at SAN DIEGO STATE	1-23-08	39-62	L	8-KING, Cassie	5-SLADE, Shawne	3-SLADE, Shawne	2-NIELSON, Mind CARLING, Mall KING, Cassie MOEAKI, Keila FOREMAN, Jazm	1-KING, Cassie CARLING, Mall NIELSON, Mind MOEAKI, Keila
at Univesity of New Mex	1/26/08	41-38	W	14-CARLING, Mall	12-VARLEY, Laure	5-NIELSON, Mind	4-NIELSON, Mind	3-VARLEY, Laure
AIR FORCE ACADEMY	01-30-08	52-47	W	24-CARLING, Mall	15-VARLEY, Laure	5-NIELSON, Mind	4-CARLING, Mall	5-VARLEY, Laure
UNIVERSITY OF WYOMIN	02-02-08	56-42	W	20-CARLING, Mall	12-SLADE, Shawne	5-NIELSON, Mind	2-NIELSON, Mind	1-VARLEY, Laure

Brigham Young University  
 Brigham Young University Game-by-Game Highs (as of Feb 16, 2008)  
 All games

Opponent	Date	Score	WL	POINTS	REBOUNDS	ASSISTS	STEALS	BLOCKED SHOTS
							VARLEY, Laure	KING, Cassie
							SLADE, Shawne	CHEESMAN, Ash
at TCU	2/5/08	54-73	L	14-NIELSON, Mind	5-SLADE, Shawne	4-NIELSON, Mind	2-NIELSON, Mind	1-WOOD, Coriann
					CARLING, Mall			NIELSON, Mind
					VARLEY, Laure			KING, Cassie
								CARLING, Mall
COLORADO STATE	02-13-08	59-44	W	14-SLADE, Shawne	11-VARLEY, Laure	9-NIELSON, Mind	2-CARLING, Mall	2-VARLEY, Laure
							NIELSON, Mind	
at UNLV	02/16/08	68-73	OL	16-NIELSON, Mind	13-VARLEY, Laure	4-CARLING, Mall	1-RED, Sarah	1-KING, Cassie
				CARLING, Mall			KING, Cassie	
							CARLING, Mall	

**Brigham Young University**  
**Brigham Young University Game-by-Game Points-Rebounds-Assists (as of Feb 16, 2008)**  
**All games**

Opponent	Date	Score	WL	00	03	05	10	11	12	13	14	22
				NICHOLS, L	FOREMAN, J	CHEESMAN, BECK, MARI	JACKSON, A	JACKSON, B	JUDKINS, J	RED, SARAH	NIELSON, M	
at UC Santa Barbara	11/09/08	61-50	W	0- 1- 0	0- 2- 5	8- 2- 2	DNP	DNP	DNP	5- 3- 1	DNP	3- 0- 3
at Arkansas State	11/13/07	53-54	L	DNP	4- 3- 2	0- 1- 2	DNP	DNP	DNP	2- 0- 0	DNP	8- 2- 0
FRESNO STATE	11-17-07	78-59	W	1- 0- 0	8- 1- 2	0- 3- 0	0- 0- 0	DNP	DNP	0- 1- 0	2- 0- 0	11- 2- 2
HARTFORD UNIVERSITY	11-20-07	59-70	L	DNP	0- 1- 0	0- 0- 0	0- 0- 0	DNP	0- 0- 0	DNP	3- 0- 0	8- 2- 1
SETON HALL	11-23-07	47-43	W	DNP	4- 0- 1	2- 2- 2	DNP	DNP	DNP	0- 0- 2	DNP	3- 2- 1
at Connecticut	11/29/07	34-80	L	2- 0- 1	4- 1- 1	2- 2- 0	DNP	DNP	0- 0- 0	0- 0- 0	DNP	2- 4- 0
at Sacred Heart	12/01/07	44-49	L	0- 0- 0	3- 0- 2	0- 2- 0	DNP	DNP	DNP	0- 0- 2	DNP	0- 1- 2
NEW MEXICO STATE	12-05-07	52-54	L	DNP	0- 1- 2	2- 2- 0	DNP	DNP	DNP	0- 0- 1	DNP	2- 2- 1
UT VALLEY WOLVERINES	12-8-07	72-52	W	0- 0- 0	3- 0- 8	2- 4- 0	0- 1- 0	DNP	0- 0- 0	3- 1- 2	2- 0- 0	9- 6- 0
at Weber State	12/12/07	54-65	L	DNP	0- 0- 2	0- 0- 0	DNP	DNP	DNP	0- 1- 3	0- 0- 0	15- 4- 1
UCLA	12-15-07	68-58	W	0- 0- 0	3- 1- 0	0- 1- 0	DNP	DNP	DNP	0- 2- 1	DNP	15- 7- 6
at Utah State	12/29/07	70-64	W	0- 0- 0	0- 1- 1	0- 0- 0	DNP	DNP	DNP	0- 1- 1	DNP	6- 4- 2
at Colorado State	01/12/08	60-39	W	DNP	0- 2- 1	6- 2- 1	DNP	DNP	DNP	3- 0- 1	5- 0- 0	11- 2- 6
UNLV	01-16-08	67-55	W	DNP	4- 2- 4	0- 1- 0	DNP	DNP	DNP	2- 0- 0	1- 0- 0	4- 3- 4
UNIVERSITY OF UTAH	01-19-08	49-80	L	0- 0- 0	2- 0- 0	5- 0- 1	DNP	DNP	DNP	0- 0- 0	0- 0- 1	2- 3- 4
at SAN DIEGO STATE	1-23-08	39-62	L	DNP	0- 0- 2	4- 2- 0	DNP	DNP	DNP	3- 2- 1	7- 0- 0	5- 1- 0
at Univesity of New Mex	1/26/08	41-38	W	DNP	6- 1- 0	2- 5- 2	DNP	DNP	DNP	DNP	0- 0- 0	6- 5- 5
AIR FORCE ACADEMY	01-30-08	52-47	W	DNP	0- 1- 0	2- 4- 0	DNP	DNP	DNP	0- 0- 0	0- 1- 0	7- 3- 5
UNIVERSITY OF WYOMIN	02-02-08	56-42	W	DNP	0- 1- 0	0- 4- 0	DNP	DNP	DNP	0- 0- 0	0- 0- 0	13- 4- 5
at TCU	2/5/08	54-73	L	DNP	0- 0- 1	2- 0- 1	DNP	DNP	DNP	0- 0- 0	6- 0- 1	14- 4- 4
COLORADO STATE	02-13-08	59-44	W	DNP	3- 3- 2	10- 5- 0	DNP	0- 0- 0	DNP	0- 0- 0	3- 3- 0	3- 2- 9
at UNLV	02/16/08	68-73	OL	DNP	2- 1- 0	0- 4- 1	DNP	DNP	DNP	0- 0- 0	6- 0- 0	16- 4- 2

Opponent	Date	Score	WL	23	30	31	32	34	45	52	54	55
				WOOD, CORI	CARLING, M	ALLETO, AM	SLADE, SHA	BELL, MARI	MOEAKI, KE	VARLEY, LA	KING, CASS	MARKS, MEG
at UC Santa Barbara	11/09/08	61-50	W	DNP	17- 4- 4	DNP	6- 3- 1	DNP	6- 3- 1	14-11- 0	2- 2- 0	DNP
at Arkansas State	11/13/07	53-54	L	0- 0- 0	13- 3- 3	DNP	2- 8- 0	DNP	4- 3- 0	16-13- 2	4- 2- 2	DNP
FRESNO STATE	11-17-07	78-59	W	5- 2- 1	17- 3- 5	0- 0- 0	16- 8- 2	0- 0- 0	2- 5- 1	8-13- 3	7- 5- 1	1- 4- 1
HARTFORD UNIVERSITY	11-20-07	59-70	L	2- 3- 0	5- 3- 4	DNP	9- 8- 2	0- 0- 0	19- 7- 3	8- 5- 1	5- 3- 0	DNP
SETON HALL	11-23-07	47-43	W	DNP	15- 2- 1	DNP	4- 7- 2	DNP	5- 7- 0	7- 8- 2	7- 4- 1	DNP
at Connecticut	11/29/07	34-80	L	8- 5- 0	4- 0- 1	DNP	10- 3- 1	DNP	0- 4- 1	2- 6- 0	0- 0- 0	0- 0- 0
at Sacred Heart	12/01/07	44-49	L	4- 2- 0	22- 4- 1	DNP	3- 5- 1	DNP	4- 3- 1	8- 8- 1	0- 1- 0	0- 0- 0
NEW MEXICO STATE	12-05-07	52-54	L	5- 4- 0	16- 5- 6	DNP	3-11- 0	DNP	6- 4- 2	12- 4- 0	6- 2- 1	DNP
UT VALLEY WOLVERINES	12-8-07	72-52	W	5- 3- 1	13- 3- 5	1- 0- 0	15- 7- 1	0- 0- 0	2- 5- 1	9- 8- 2	8- 6- 0	0- 1- 0
at Weber State	12/12/07	54-65	L	0- 2- 1	9- 6- 2	DNP	7- 2- 3	DNP	11- 1- 0	2- 8- 1	10- 4- 2	DNP
UCLA	12-15-07	68-58	W	0- 0- 0	16- 9- 3	DNP	10- 6- 3	DNP	4- 1- 3	7- 6- 0	13- 5- 1	DNP
at Utah State	12/29/07	70-64	W	7- 2- 0	19- 7- 5	DNP	7- 5- 4	DNP	14- 4- 2	10- 9- 3	7- 3- 1	DNP
at Colorado State	01/12/08	60-39	W	13- 3- 0	7- 5- 2	DNP	2- 2- 1	0- 0- 0	1- 2- 1	8-14- 0	2- 3- 0	2- 1- 0
UNLV	01-16-08	67-55	W	2- 2- 0	26- 3- 2	DNP	8- 1- 1	DNP	4- 6- 1	14-11- 2	2- 6- 2	DNP
UNIVERSITY OF UTAH	01-19-08	49-80	L	3- 3- 0	21- 0- 2	0- 0- 0	5- 9- 1	DNP	7- 5- 0	4- 2- 1	0- 1- 1	0- 0- 0
at SAN DIEGO STATE	1-23-08	39-62	L	2- 1- 0	2- 3- 1	DNP	3- 5- 3	DNP	4- 4- 1	1- 4- 0	8- 4- 0	0- 2- 0
at Univesity of New Mex	1/26/08	41-38	W	0- 2- 0	14- 4- 2	DNP	12- 8- 0	DNP	0- 3- 0	1-12- 1	0- 0- 0	DNP
AIR FORCE ACADEMY	01-30-08	52-47	W	0- 2- 0	24- 3- 1	DNP	8- 1- 4	DNP	2- 4- 0	9-15- 4	0- 3- 0	DNP
UNIVERSITY OF WYOMIN	02-02-08	56-42	W	0- 2- 1	20- 4- 2	DNP	9-12- 2	0- 1- 0	2- 0- 2	2- 5- 1	10- 4- 1	0- 0- 0
at TCU	2/5/08	54-73	L	2- 2- 0	11- 5- 0	DNP	6- 5- 1	DNP	3- 3- 2	6- 5- 3	4- 1- 0	0- 2- 0
COLORADO STATE	02-13-08	59-44	W	5- 2- 0	5- 4- 4	DNP	14- 3- 1	DNP	0- 2- 0	11-11- 1	5- 2- 0	0- 0- 0
at UNLV	02/16/08	68-73	OL	0- 0- 1	16- 6- 4	DNP	11- 4- 0	DNP	0- 1- 2	10-13- 3	7- 8- 1	DNP

Brigham Young University  
 Brigham Young University Category Leaders (as of Feb 16, 2008)  
 All games

FG PERCENTAGE	FG ATT	Pct
KING, Cassie.....	37 72	.514
VARLEY, Lauren.....	78 155	.503
MOEAKI, Keilani.....	37 80	.463
RED, Sarah.....	12 27	.444
CARLING, Mallary....	109 283	.385
Cheesman, Ashley....	19 50	.380
NIELSON, Mindy.....	57 151	.377
SLADE, Shawnee.....	70 195	.359
WOOD, Coriann.....	22 66	.333
Foreman, Jazmine....	15 63	.238
JUDKINS, Jaime.....	5 24	.208
MARKS, Megan.....	1 8	.125

3-POINT PERCENTAGE	3FG ATT	Pct
KING, Cassie.....	3 5	.600
RED, Sarah.....	6 11	.545
MOEAKI, Keilani.....	1 2	.500
CARLING, Mallary....	51 149	.342
NIELSON, Mindy.....	13 41	.317
SLADE, Shawnee.....	22 72	.306
Foreman, Jazmine....	8 30	.267
JUDKINS, Jaime.....	4 20	.200
WOOD, Coriann.....	6 34	.176
JACKSON, Brooke....	0 1	.000
VARLEY, Lauren.....	0 1	.000
Cheesman, Ashley....	0 1	.000
MARKS, Megan.....	0 3	.000

FT PERCENTAGE	FT ATT	Pct
JUDKINS, Jaime.....	4 4	1.000
WOOD, Coriann.....	13 15	.867
RED, Sarah.....	5 6	.833
CARLING, Mallary....	43 52	.827
KING, Cassie.....	30 40	.750
NIELSON, Mindy.....	36 54	.667
MOEAKI, Keilani.....	25 38	.658
Cheesman, Ashley....	9 15	.600
Foreman, Jazmine....	8 14	.571
Nichols, Lauren.....	3 6	.500
ALLETO, Amy.....	1 2	.500
SLADE, Shawnee.....	8 19	.421

POINTS	G	Pts	Pts/G
CARLING, Mallary....	22	312	14.2
SLADE, Shawnee.....	22	170	7.7
VARLEY, Lauren.....	22	169	7.7
NIELSON, Mindy.....	22	163	7.4
KING, Cassie.....	22	107	4.9
MOEAKI, Keilani.....	22	100	4.5
WOOD, Coriann.....	20	63	3.2
Cheesman, Ashley....	22	47	2.1
Foreman, Jazmine....	22	46	2.1
RED, Sarah.....	14	35	2.5
JUDKINS, Jaime.....	20	18	0.9

FIELD GOAL ATTEMPTS	G	Att	Att/G
CARLING, Mallary....	22	283	12.9
SLADE, Shawnee.....	22	195	8.9
VARLEY, Lauren.....	22	155	7.0
NIELSON, Mindy.....	22	151	6.9
MOEAKI, Keilani.....	22	80	3.6

FIELD GOALS MADE	G	Made	Made/G
CARLING, Mallary....	22	109	5.0
VARLEY, Lauren.....	22	78	3.5
SLADE, Shawnee.....	22	70	3.2
NIELSON, Mindy.....	22	57	2.6
KING, Cassie.....	22	37	1.7
MOEAKI, Keilani.....	22	37	1.7

3-POINT FG ATTEMPTS	G	Att	Att/G
CARLING, Mallary....	22	149	6.8
SLADE, Shawnee.....	22	72	3.3
NIELSON, Mindy.....	22	41	1.9
WOOD, Coriann.....	20	34	1.7
Foreman, Jazmine....	22	30	1.4

3-POINT FGS MADE	G	Made	Made/G
CARLING, Mallary....	22	51	2.3
SLADE, Shawnee.....	22	22	1.0
NIELSON, Mindy.....	22	13	0.6
Foreman, Jazmine....	22	8	0.4
WOOD, Coriann.....	20	6	0.3
RED, Sarah.....	14	6	0.4

FREE THROW ATTEMPTS	G	Att	Att/G
NIELSON, Mindy.....	22	54	2.5
CARLING, Mallary....	22	52	2.4
KING, Cassie.....	22	40	1.8
MOEAKI, Keilani.....	22	38	1.7
VARLEY, Lauren.....	22	35	1.6

FREE THROWS MADE	G	Made	Made/G
CARLING, Mallary....	22	43	2.0
NIELSON, Mindy.....	22	36	1.6
KING, Cassie.....	22	30	1.4
MOEAKI, Keilani.....	22	25	1.1
WOOD, Coriann.....	20	13	0.7
VARLEY, Lauren.....	22	13	0.6

SCORING AVERAGE	G	Pts	Avg/G
CARLING, Mallary....	22	312	14.2
SLADE, Shawnee.....	22	170	7.7
VARLEY, Lauren.....	22	169	7.7
NIELSON, Mindy.....	22	163	7.4
KING, Cassie.....	22	107	4.9
MOEAKI, Keilani.....	22	100	4.5
WOOD, Coriann.....	20	63	3.2
RED, Sarah.....	14	35	2.5
Cheesman, Ashley....	22	47	2.1
Foreman, Jazmine....	22	46	2.1
JUDKINS, Jaime.....	20	18	0.9



Brigham Young University  
 Brigham Young University Category Leaders (as of Feb 16, 2008)  
 All games

REBOUNDS	G	Reb	Reb/G
VARLEY, Lauren.....	22	191	8.7
SLADE, Shawnee.....	22	123	5.6
CARLING, Mallary....	22	86	3.9
MOEAKI, Keilani.....	22	77	3.5
KING, Cassie.....	22	69	3.1

REBOUND AVERAGE	G	Reb	Avg/G
VARLEY, Lauren.....	22	191	8.7
SLADE, Shawnee.....	22	123	5.6
CARLING, Mallary....	22	86	3.9
MOEAKI, Keilani.....	22	77	3.5
KING, Cassie.....	22	69	3.1

OFFENSIVE REBOUNDS	G	No.	Avg/G
VARLEY, Lauren.....	22	66	3.0
SLADE, Shawnee.....	22	40	1.8
MOEAKI, Keilani.....	22	31	1.4
KING, Cassie.....	22	27	1.2
Cheesman, Ashley....	22	14	0.6

DEFENSIVE REBOUNDS	G	No.	Avg/G
VARLEY, Lauren.....	22	125	5.7
SLADE, Shawnee.....	22	83	3.8
CARLING, Mallary....	22	75	3.4
NIELSON, Mindy.....	22	58	2.6
MOEAKI, Keilani.....	22	46	2.1

FOULS	G	No.	Per/G
VARLEY, Lauren.....	22	61	2.8
SLADE, Shawnee.....	22	57	2.6
Foreman, Jazmine....	22	43	2.0
MOEAKI, Keilani.....	22	41	1.9
KING, Cassie.....	22	41	1.9

FOULOUTS	G	No.
CARLING, Mallary....	22	2
Foreman, Jazmine....	22	2
SLADE, Shawnee.....	22	1
NIELSON, Mindy.....	22	1

ASSISTS	G	No.	A/G
NIELSON, Mindy.....	22	63	2.9
CARLING, Mallary....	22	60	2.7
Foreman, Jazmine....	22	36	1.6
SLADE, Shawnee.....	22	34	1.5
VARLEY, Lauren.....	22	31	1.4

STEALS	G	No.	S/G
NIELSON, Mindy.....	22	36	1.6
CARLING, Mallary....	22	29	1.3
SLADE, Shawnee.....	22	20	0.9
VARLEY, Lauren.....	22	18	0.8
MOEAKI, Keilani.....	22	8	0.4
Foreman, Jazmine....	22	8	0.4

BLOCKED SHOTS	G	No.	Blk/G
VARLEY, Lauren.....	22	31	1.4
NIELSON, Mindy.....	22	16	0.7
KING, Cassie.....	22	14	0.6
CARLING, Mallary....	22	10	0.5
MOEAKI, Keilani.....	22	6	0.3

MINUTES	G	No.	Min/G
CARLING, Mallary....	22	787	35.8
SLADE, Shawnee.....	22	670	30.5
NIELSON, Mindy.....	22	591	26.9
VARLEY, Lauren.....	22	571	26.0
MOEAKI, Keilani.....	22	400	18.2

TURNOVERS	G	No.	TO/G
CARLING, Mallary....	22	76	3.5
NIELSON, Mindy.....	22	70	3.2
MOEAKI, Keilani.....	22	58	2.6
VARLEY, Lauren.....	22	52	2.4
SLADE, Shawnee.....	22	45	2.0