



Athletic Communications

30 Smith Fieldhouse • Provo, Utah • 84602
801-422-8948 • fax 801-422-0633

WOMEN'S BASKETBALL RELEASE

Games# 1 and 2: {BYU (0-0) @ UCSB (0-0), Nov. 9, 2007}
{BYU (0-0) @ Arkansas State (0-0), Nov. 13, 2007}

BYU 2007-08 Schedule/Results

DATE	OPPONENT	TIME/RESULT
N 9	@ UC Santa Barbara	7 p.m.
N 13	@ Arkansas State	7 p.m.
N 17	vs. Fresno State	2 p.m.
N 20	vs. Hartford	4:30 p.m.
N. 23	vs. Seton Hall	7 p.m.
N 29	@ U Conn	TBA
D 1	@ Sacred Heart	2 p.m.
D 5	vs. New Mexico State	4:30 p.m.
D 8	vs. Utah Valley U.	4:30 p.m.
D 12	@ Weber State	12 p.m.
D 15	vs. UCLA	4 p.m.
D 29	@ Utah State	5 p.m.
J 12	@ Colorado State *	2 p.m.
J 16	vs. UNLV *	7 p.m.
J 19	vs. Utah * (Mtn.)	7 p.m.
J 23	@ SDSU *	7 p.m.
J 26	@ New Mexico *	2 p.m.
J 30	vs. Air Force *	7 p.m.
F 2	vs. Wyoming *	4 p.m.
F 5	@ TCU * (Mtn.)	7 p.m.
F 13	vs. CSU *	7 p.m.
F 16	@ UNLV *	7 p.m.
F 19	@ Utah * (CSTV)	8 p.m.
F 23	vs. San Diego St. *	2 p.m.
F 26	vs. UNM * (Mtn.)	6 p.m.
M 1	@ Air Force *	2 p.m.
M 5	@ Wyoming * (Mtn.)	6 p.m.
M 8	vs. TCU * (CSTV)	TBA
M 6-10	@ MWC Champs.	TBA
M 22-24	@ NCAA 1st/2nd Round	TBA
M 29-31	@ NCAA Regionals	TBA
A 6-8	@ Final Four	TBA

*MWC Games
All Times Local to Site

BYU Athletic Communications

Basketball Contact: Norma Collett
E-Mail: norma_collett@byu.edu
Office Phone: 801-422-4908
Office Fax: 801-422-0633
Mobile Phone: 801-372-0989
Press Row Phone: 801-422-3675
Web Site: byucougars.com

THIS WEEK IN WOMEN'S BASKETBALL

The 2007-08 season begins this week for BYU's women's basketball team. Two road games open up the year with a game at UCSB on Nov. 9 and at Arkansas State on Nov. 13.

Game #1- 11/09/07: BYU @ UCSB **Time:** 7 p.m. PT **Arena:** The Thunderdome
Game #2- 11/13/07: BYU @ Arkansas St. **Time:** 2 p.m. CT **Arena:** Convocation Center

Cougars on the radio and the internet –

Radio: All of the BYU games this season will air live on the radio at KOVO 960 AM. In addition, fans can tune in to a 15-minute postgame show on KOVO.

Internet: This week's games will also be heard live on the internet at <http://www.byuradio.org/streaming>

Veteran broadcaster Jay Monsen will call the action for both games.

BYU Probable Starters

No.	Name	Pos.	Ht.	Yr.	PPG	RPG
3	Jazmine Foreman	G	5-5	Fr		
30	Mallary G. Carling	G	5-10	Sr	13.7	3.7
32	Shawnee Slade	F	5-11	Jr	7.8	4.6
54	Cassie King	F	6-3	Jr	3.5	2.7
52	Lauren R. Varley	C	6-3	Sr	7.3	6.6

Reserve Players

No.	Name	Pos.	Ht.	Yr.	PPG	RPG
5	Ashley Cheesman	F	6-0	Sr	2.2	1.8
13	Jaime Judkins	G	5-6	So	0.2	0.6
0	Lauren Nichols	F	6-0	Fr (rs)		
14	Sarah Red	G/F	5-11	Jr (rs)		
21	Stephanie Buhler	F	6-0	Fr		
22	Mindy Nielson	G	5-10	Fr		
23	Coriann Wood	F	6-1	Fr		
45	Keilani Moeaki	F	6-2	Fr		

BYU QUICK HITS

The team

Two starters are among the six letterwinners returning for the 2007-08 season. The team also returns two redshirts in addition to six very talented newcomers

BYU Quick Facts

Basketball Information	
Head Coach	Jeff Judkins (Utah, 1978)
Office Phone	801-422-8035
Best time to call	9-10:00 a.m. daily
Record at BYU/Yrs.	126-62/6
Career Record:	same
Assistant Coach	Alli Bills
Office Phone	801-422- 1548
Assistant Coach	Jonas Chatterton
Office Phone	801-422 -8155
Assistant Coach	Stacy Jensen
Office Phone	801-422-7682

Team Facts

2006-07 Record	23-10,12-4
2006-07 Post Season	0-1, NCAA
Starters Returning/Lost	2/3
Letterwinners Returning/Lost	6/3
Newcomers	6

Roster Breakdown

STARTERS RETURNING: (2)

Mallary Gillespie: 5-10 S, G (13.6 ppg, 3.7 rpg)
Lauren Riley: 6-3 Sr, C (7.4 ppg, 6.5 rpg)

STARTERS LOST: (3)

Dani Wright: 6-3 Sr, F (13.4 ppg, 6.8 rpg)
Melinda Johnsen: 5-10 Sr, F/G (6.0 ppg, 2.8 rpg)
Jennie Keele: 5-10 Sr, G (6.2 ppg, 3.7 rpg)

LETTERWINNERS RETURNING: (4)

Ashley Cheesman: 6-0 Sr, F (2.2 ppg, 1.7 rpg)
Jaime Judkins: 5-6 So, G (0.2 ppg, 0.6 rpg)
Cassie King: 6-3 Jr, C (3.5 ppg, 2.6 rpg)
Shawnee Slade: 5-11 Jr, G/F (7.8 ppg, 4.5 rpg)

OTHERS RETURNING: (2)

Lauren Nichols: 6-0 Fr, G (RS last season)
Sarah Red: 5-11 So, G/F (RS last season)

LETTERWINNERS LOST: (3)

Dani Wright: 6-3 Sr, F (13.4 ppg, 6.8 rpg)
Melinda Johnsen: 5-10 Sr, F/G (6.0 ppg, 2.8 rpg)
Jennie Keele: 5-10 Sr, G (6.2 ppg, 3.7 rpg)

NEWCOMERS: (6)

Stephanie Buhler: 6-0 Fr, F - Oregon City, OR/Oregon City HS
Jazmine Foreman: 5-5 Fr, G - Vancouver, WA/Hudson's Bay HS
Megan Marks: 6-2 Fr, F - South Jordan, UT/Bingham HS
Keilani Moeaki: 6-2 Fr, F - Warrentville, IL/Wheaton Wville S HS
Mindy Nielson: 5-10 Fr, G - Centennial, CO/Regis Jesuit HS
Coriann Wood: 6-1 Fr, F - Othello, WA/Connell HS

☐ The seniors are MWC Second Team honoree guard Mallary Gillespie-Carling and MWC Honorable Mention Lauren Riley-Varley. Both were also named to the 2007 MWC All-Tournament Team.

☐ Among the letterwinners are junior forward/guard combo Shawnee Slade, senior forward Ashley Cheesman and junior center Cassie King. The trio return with the most playing experience and an understanding of coach Judkins' game plan. Guard Jamie Judkins who also comes in with significant playing time experience.

☐ Two redshirts who were on the team last year, freshman forward Lauren Nichols and sophomore guard Sarah Red, a transfer from the University of Utah, will also provide solid experience on the team.

☐ Six new incoming freshmen will take to the court in 2007-08. They are:
Stephanie Buhler, a 6-0 forward from Oregon City, Ore., and Oregon City High School
Jazmine Foreman, 5-5 guard from Vancouver, Wash., and Hudson's Bay High School
Megan Marks, a 6-2 forward from South Jordan, Utah and Bingham High School
Keilani Moeaki, a 6-2 forward from Warrentville, Ill. and Wheaton Warrentville South High School
Mindy Nielson, 5-10 guard form Centennial. Colo., and Regis Jesuit High School
Coriann Wood, a 6-1 forward from Basin City, Wash., and Connell High School.

Final Team Stats – 2006-07

- ✓ Shooting from the field: (.433, 750-1733)
- ✓ Shooting from the free-throw line: (.618, 329-532)
- ✓ Shooting from three-point line: (.310, 171-552)
- ✓ Average points per game: 62.5



◆◆ 2006-07 Season Highlights and Notables ◆◆

TEAM

- ◆◆ BYU advanced to the title game of this year's MWC Championships for the second straight time since the first MWC tournament back in 2000.
- ◆◆ The Cougars made their eighth appearance and second straight into the 2007 NCAA Championships, losing in the first round to Louisville
- ◆◆ When leading at the half the team finished the year with a 18-2 record.
- ◆◆ BYU ended the season with an 18-5 record when outrebounding opponents.
- ◆◆ Season highs included: (10) blocks vs. SDSU on 02/24/07, (79) points scored against Weber State on 12/14/06, (13) three-point goals made vs.

**USA Today ESPN Div. I Top 25 Coaches Poll --
Preseason Poll**

- Rk. School**
 1. Tennessee (34-3)
 2. Connecticut (32-4)*
 3. Rutgers (27-9)
 4. Maryland (28-6)
 5. LSU (30-8)
 6. Oklahoma (28-5)
 7. North Carolina (34-3)
 8. Stanford (29-5)
 9. Duke (32-2)
 10. Georgia (27-7)
 11. Texas A&M (25-7)
 12. Arizona State (31-5)
 13. George Washington (28-4)
 14. California (23-9)
 15. Baylor (26-8)
 16. Ohio State (28-4)
 17. Vanderbilt (28-6)
 18. Michigan State (24-9)
 19. Florida State (24-10)
 20. Purdue (31-6)
 21. Pittsburgh (24-9)
 22. West Virginia (21-11)
 23. Louisville (27-8)
 24. Texas (18-14)
 25. North Carolina State (25-10)

Denotes 07-08 Opponent. Receiving Votes: Wyoming, BYU, UNM, UCLA, Utah

2006-07 BYU's record when...

BYU leads at half	18-2
Opponent leads at half	4-8
Score is tied at the half	0-0
Game goes into overtime	0-2
BYU shoots 50 % or better	4-0
Opponent shoots 50 % or better	0-0
BYU makes five or more 3-pointers	12-3
Opponent makes 5 or more 3-pointers	7-6
BYU outrebounds opponent	18-5
Opponent outrebounds BYU	4-5
Rebounds are equal	0-0
BYU has 16 and under turnovers	10-3
Opponent has 16 and under	11-7
BYU has 17-20 turnovers	11-6
Opponent has 17-20 turnovers	6-0
BYU has more than 20 turnovers	1-2
Opponent has more than 20 turnovers	4-0
Cougars play at home	12-1
Cougars play on the road	9-7
Cougars play at neutral site	2-2

Weber State on 12/14/06, (55) total rebounds grabbed in the game vs. CSUN on 12/09/06, (15) steals in the game @ UNLV on 02/21/07 were season

- There were eight games in which BYU scored at least 70 points.
- BYU shot 50 percent or better from the field in four games (vs. AF on 03/07/07 .509 ; @ Wyoming on 02/15/07 .511; vs. Weber State .534 on 12/14/06 and vs. UCR .521 on 12/20/06)
- The Cougars non-conference road record finished at 4-4.

PLAYER

- Dani Wright scored a new season and career high (30) points @ UNLV on 02/21/07.
- Dani Wright set a new season and career high in rebounds with (15) vs. TCU on 02/01/07.
- Melinda Johnsen grabbed seven boards against Wyoming on 02/15/07 tying her season high in rebounds and the most boards versus a league opponent during the 2006-07 season.
- Lauren Riley picked up a season and career high five blocks vs. AF on 02/08/07.
- Lauren Riley picked up season and career highs in points with 18 vs. UNM on 02/10/07.
- Mallary Gillespie picked up season and career highs in points with 31 at Wyoming on 02/15/07.
- Ashley Cheesman started in her first game for the Cougars in the second half of the AF game on 03/07/07 for an injured Dani Wright. In the game she picked up a new season and BYU career high six rebounds, and she tied her season high in points with eight.

2007-08 MOUNTAIN WEST CONFERENCE

In October the Cougar team was picked to finish third in the MWC Preseason Poll. Senior Mallary Gillespie Carling was picked to the five member Preseason All-Conference Team.

Rk. Team (1st place votes) Points

1. Wyoming (24)	203
2. TCU (2)	188
3. BYU (1)	182
4. New Mexico (3)	174
5. Utah	158
6. UNLV	109
7. San Diego State	93
8. Colorado State	53
9. Air Force	37

Preseason All-Conference Team

Name,	Class	Position	Institution
Adrienne Ross	Sr.	G	TCU
Dionne Marsh	Sr.	F	New Mexico
Hanna Zavec	Sr.	F	Wyoming
Morgan Warburton	Jr.	G	Utah
Mallary Gillespie-Carling	Sr.	G	BYU

Cougars in the MWC Stats (Final)



Team Stats	All Games	MWC Games
Scoring Offense	4th	3rd
Scoring Defense	3rd	4th
Scoring Margin	4th	4th
Free Throw %	9th	9th
Field Goal %	1st	1st
Field Goal % Defense	1st	1st
3-PT Field Goal %	6th	6th
3-PT Field Goal % Defense	5th	5th
Rebounding Offense	3rd	2nd
Rebounding Defense	4th	3rd
Rebounding Margin	2nd	3rd
Blocked Shots	3rd	2nd
Assists	1st	1st
Steals	5th	5th
Turnover Margin	6th	6th
Assist/Turnover Ratio	3rd	3rd
Offensive Rebounds	5th	6th
Defensive Rebounds	3rd	3rd
3-PT Field Goals Made	4th	2nd

Individual Stats	All Games	MWC Games
Scoring	9th D. Wright (13.4)	3rd D. Wright (15.1)
	8th M. Gillespie (13.6)	4th M. Gillespie (14.4)
Rebounding	6th D. Wright (6.8)	5th D. Wright (7.4)
	9th L. Riley (6.5)	2nd L. Riley (7.6)
Field Goal %	1st D. Wright (.594)	2nd D. Wright (.585)
	2nd L. Riley (.548)	1st L. Riley (.608)
Assists	2nd M. Johnsen (4.45)	2nd M. Johnsen (5.13)
	10th M. Gillespie (2.82)	7th M. Gillespie 2.88)
	7th J. Keele (2.97)	5th J. Keele (3.06)
Free Throw %	4th M. Gillespie (.859)	3rd M. Gillespie (.878)
Steals	6th M. Johnsen (1.70)	4th M. Johnsen (1.75)
	11th Jennie Keele (1.42)	13th J. Keele (1.38)
3-PT Field Goal %	11th M. Gillespie (.342)	8th M. Gillespie (.359)
3-PT Field Goals Made	3rd M. Gillespie (2.30)	1st M. Gillespie (2.63)
	n/a	.15th J. Keele (0.88)
Blocked Shots	9th L. Riley (0.94)	3rd L. Riley (1.31)
	12th D. Wright (0.76)	10th D. Wright (0.94)
Assist/Turnover Ratio	1st M. Johnsen (2.19)	1st M. Johnsen (2.65)
	n/a	3rd M. Gillespie (1.63)
Offensive Rebounds	2nd D. Wright (3.18)	1st D. Wright (3.63)
	5th L. Riley (2.48)	4th L. Riley (2.81)
Defensive Rebounds	12th L. Riley (4.06)	7th L. Riley (4.81)

MWC Season Honors for 2006-07

Player of the Week - Mallary Gillespie (Feb. 19, 2007)

Player of the Week - Mallary Gillespie (Feb. 5, 2007)

Player of the Week - Mallary Gillespie (Dec. 18, 2006)

Player of the Week - Shawnee Slade (Nov. 12, 2006)

2007 MWC Postseason Honors

Co-Player of the Year - Dani Wright#

Coach of the Year - Jeff Judkins %

First Team All-MWC - Dani Wright

Second Team All-MWC - Mallary Gillespie

Honorable Mention All-MWC - Melinda Johnsen, Lauren Riley

2007 MWC Championships - All Tournament Team

Mallary Gillespie

Lauren Riley

Other Awards

Dani Wright - 2006 Preseason WNIT All-Tournament Team

This award was given to another BYU player last year - senior Ambrosia Anderson. She's currently on the WNBA's NY Liberty roster.

% Second straight honor for Coach Judkins

ABOUT THIS WEEK'S OPPONENTS

UCSB - Santa Barbara, CA (11/9/07)

The 2007-08 Gauchos team returns all five starters and 12 letterwinners from a team that compiled a 19-14 record and advanced to the second round of the WNIT last season. UCSB will be led by senior guard Jessica Wilson who averaged 13.0 points and 6.7 rebounds per game. Another senior, Chisa Ononiwu will also play a big role on the team. Ononiwu averaged 11.6 points and 5.0 boards per contest. The Gauchos are coached by Mark French who enters his 22nd season with the program, and are part of the Big West Conference.

UCSB Probable Starters * (all stats are from last season)

Pos.	#	Name	Ht	Yr	PPG	RPG
F	14	Jordan Franey	6-0	So	8.6	4.0
F	23	Ashlee Brown	6-0	Fr		
G	03	Chisa Ononiwu	5-7	Sr	11.6	5.0
G	05	Jessica Wilson	5-10	Sr	13.0	6.7
G	11	Sha'Rae Gibbons	5-7	Jr	0.3	0.3

Stat Comparisons*

	BYU	UCSB
Field Goals:	.433	.421
Free Throws:	.618	.705
Three-Pointers:	.310	.337
Points Per Game:	62.5	68.8
Rebounds Per Game:	37.9	38.3

Series Record: 2-4 in favor of UCSB

Last Meeting: 11/26/05 in Provo where the Cougars captured a 72-39 victory.

Arkansas State - Jonesboro, AR (11/13/07)

Arkansas State compiled an impressive 21-13 overall record and finished fourth in the Sun Belt West Division. The team returns two starters and eight letterwinners. Ashley Anderson and Caroline Starr are the two starters back with Anderson averaging 4.2 ppg and 2.7 rpg, while Starr tallied 7.4 ppg and 3.5 rpgs. The Lady Indians are coached by Brian Boyer who is in his eighth season with the program.

Arkansas State Probable Starters * (all stats are from last season)

Pos.	#	Name	Ht	Yr	PPG	RPG
F	5	Kelsey Lock	6-0	Sr	1.7	0.8
F	33	Ashley Anderson	6-2	Jr	4.2	2.7
G	01	Jazmine Taylor	5-8	So	1.3	1.2
G	24	Veronica Smith	5-10	So	3.0	2.1
G	25	Caroline Starr	5-10	Jr	7.4	3.5

Stat Comparisons*

	BYU	ASU
Field Goals:	.433	.423
Free Throws:	.618	.704
Three-Pointers:	.310	.325
Points Per Game:	62.5	66.3
Rebounds Per Game:	37.9	37.0

Series Record: First meeting between the two schools

TRAVEL PLANS

To UCSB Game

Flight: Nov. 8, Delta flight# 3965 departs SLC at 11:55 a.m., arriving in Santa Barbara at 1 p.m.
Flight: Nov. 10, Delta flight# 3950 departs Santa Barbara at 6:10 a.m., arriving in SLC at 9:06 a.m.
Team Hotel: Nov. 8-10, Hokiday Inn, 5650 Calle Real, 805-964-6241, 805-964-8467, fax.

To Arkansas State Game

Flight: Nov. 12, Delta flight# 1543 departs SLC at 10:15 a.m., to Cincinnati. Delta flight# 5039 arriving in Memphis at 5:24 p.m.
Flight: Nov. 14, Delta flight# 1658 departs Memphis at 8 a.m., to Atlanta. Delta flight# 1285 arriving in SLC at 2:10 p.m.
Team Hotel: Holiday Inn Express, 2407 Phillips Drive, Jonesboro, 501-932-5554,

MEDIA AVAILABILITY

Team Practice Times - at home

✍ The team practices are held at the Marriott Center MWF from 11:30 a.m., to 1:30 p.m. On Tuesday's, practice is scheduled from 1 to 3 p.m., and on Thursday's from 12:30 to 3 p.m.

✍ Coach Judkins and players are available for interviews prior to or after their practices. All interviews are scheduled in advance. Norma Collett is the Basketball Communications Director for the team and can be contacted by phone or email.

Contact at -- office: 801-422-4908, cell: 801-372-0989 and email: norma_collett@byu.edu

Team Practice Times - on the road

✍ For the game at UCSB, the Cougars have a shootaround for one-hour at 12:15 p.m., on Nov. 9.

✍ For the game at Arkansas State, BYU has a scheduled shootaround at 11 a.m. on Nov. 13.

WHAT'S NEXT

BYU will return home for its season opener at the Marriott Center on Sat., Nov. 17 against Fresno State. Tip off is at 2 p.m.

The Cougars also host Hartford on Nov. 20 at 4:30 p.m., and Seton Hall on Nov. 23 at 7 p.m.



Head Coach - Jeff Judkins
Overall Record: 126-62
2007-08: 0-0

2007 MWC Coach of the Year Jeff Judkins begins his seventh year as head coach of the women's basketball program, after garnering back-to-back MWC Coach of the Year honors. Prior to heading up the women's program, he served one year (1999-2000) as Director of Basketball Operations for the BYU men's team. In 2000 he became an assistant coach on the women's team.

Judkins Coaching Record			
School	Yrs.	Rec.	Postseason
Utah*	1990-99	250-76	
BYU	2001-02	24-9	NCAA Sweet 16
BYU	2002-03	19-12	NCAA 1st Round
BYU	2003-04	15-14	DNC
BYU	2004-05	19-11	WNIT 1st Round
BYU	2005-06	26-6	NCAA 2nd Round
BYU	2006-07	23-10	NCAA 1st Round

* as an assistant to the men's team

Last year the BYU team compiled a 23-10, 12-4 record, made its eighth NCAA tournament appearance, and second consecutive. The team also won the MWC Regular Season title for the second straight time. Dani Wright was named MWC Co-Player of the Year. Her honor marks back-to-back years that a BYU player has received the honor. Ambrosia Anderson received the same award during the 2005-06 campaign.

Two seasons ago under Judkins leadership, the Cougars compiled their best finish in school history with a 26-6 record, clinched their first MWC regular season title since 1992 and received a no. 7 seed in the NCAA tournament, the highest seed for any BYU program. For the first time since the 2002-03 season, the team and its 13-1 record to start the year broke into the women's basketball collegiate polls, ranked No. 23 by the AP Poll and the USA Today/ESPN/WBCA Coaches Poll. They would rank as high as 18 and 16 in the two respective polls, finishing the year at No. 20. Last season Judkins picked up his 100th win, a 69-67 victory over CSU on Mar. 2, the same time the team clinched the league's regular season title.

Under Judkins tutelage, the women's basketball program has had consistent success with four postseason appearances including three NCAA Championships, guiding the team to its first ever Sweet Sixteen finish in 2002. In 2005, the 19-11 team played in the first round of the WNIT. Judkins has also coached two All-Americans in Erin Thorn and Ambrosia Anderson. Both have gone on to play in the WNBA for the New York Liberty. Thorn has been with the team for the past four years while Anderson just completed her first year playing professionally.

Coach Judkins has won at least 17 games every year but one since becoming the women's head coach. With his 23 wins last season, he has recorded three 20 win seasons and two MWC Regular Season titles.

The longtime University of Utah coach and player came to Provo with a proven record of success dating back to his high school days at Highland HS in Salt Lake City. An all-state selection in basketball, football and baseball, Judkins went on to play for the University of Utah from 1974-78.

While playing at Utah, Judkins helped lead the Utes to one conference championship and two berths in the NCAA tournament. He was a second-team academic All-American and three-time District VII academic selection. He also earned three first team All-WAC honors and was a member of the 1977 United States World Games team that captured the gold medal. Judkins also played five years in the National Basketball Association for the Boston Celtics, Portland Trailblazers, Detroit Pistons and Utah Jazz. He was a second-round pick of the Celtics in 1978, the same year the Celtics selected Larry Bird with the sixth pick overall.

After his NBA career, he returned to Utah in 1989 and was an instrumental part of that program's success during his 10 years, recruiting such players as Keith Van Horn, Andre Miller, Mike Doleac, Hanno Mottola, Alex Jensen, Trent Whiting, Gamer Meads, Jeff Johnsen and Britton Johnsen. Judkins, graduated from the University of Utah in 1978 with a degree in health and physical education. He and his wife Mary Kaye are the parents of five children: Jessica (27), (married to Paul), Jordan (25), Jenna (23), Jaime, who plays on the basketball team, (20), and Jaxson (17). Jenna plays on the volleyball team at BYU.

Hobbies: Waterskiing, horseback riding, hunting, golf, softball, and watching ESPN.

BYU Women's Basketball 2007-08 Numerical Roster

No.	Name	Pos.	Ht.	Cl.	Exp.	Hometown/Previous School
0	Lauren Nichols	F	6-0	Fr	HS	Irvine, CA/Hesperia HS
3	Jazmine Foreman	G	5-5	Fr	HS	Vancouver, WA/Hudson's Bay HS
5	Ashley Cheesman	F	6-0	Sr	3V	Orem, UT/Mountain View HS/SDSU
13	Jaime Judkins	G	5-6	So	1V	Salt Lake City, UT/Skyline HS
14	Sarah Red	G/F	5-11	Jr	1V	Provo, UT/Timpview HS/Utah
21	Stephanie Buhler	F	6-0	Fr	HS	Oregon City, OR/Oregon City HS
22	Mindy Neilson	G	5-10	Fr	HS	Centennial, CO/Regis Jesuit HS
23	Coriann Wood	F	6-1	Fr	HS	Basin City, WA/Connell HS
30	Mallary Gillespie-Carling	G	5-10	Sr	3V	Orem, UT/Mountain View HS
32	Shawnee Slade	G/F	5-11	Jr	2V	Taylorville, UT/Taylorville HS
33	Haley Hall	G	5-4	Fr	1V	Syracuse, UT/Clearfield HS
45	Keilani Moeaki	F	6-2	Fr	HS	Warrenville, IL/Wheaton Warrenville South HS
52	Lauren Riley-Varley	C	6-3	Sr	3V	San Clemente, CA/San Clemente HS
54	Cassie King	C	6-3	Jr	2V	Provo, UT/Provo HS
55	Megan Marks	F	6-2	Fr	HS	South Jordan, UT/Bingham HS

Walkons

31	Amy Alletto	G	5-9	So	HS	Parker, CO/Ponderosa HS
12	Brooke Jackson	G	5-8	Fr	HS	Mesa, AZ/Mountain View HS
10	Marie Beck	G	5-8	Fr	HS	Oxnard, CA/Channel Islands HS
34	Marianne Bell	F	6-1	Fr	HS	Ashburn, VA/Stone Bridge/Bruton HS

Head Coach: Jeff Judkins

Assistant Coaches: Alli Bills, Jonas Chatterton, Stacy Jensen

Director of Basketball Operations: Dan Nielson

Athletic Trainer: Carolyn Billings

Team Manager: Erica Eyestone

RETURNING PLAYER BIOS

◆ **Mallary Gillespie-Carling** ◆

30

Guard

5-10, Senior

Vineyard, Utah



At BYU

JUNIOR - (2006-2007): Final player notes: Started in all games ... named to the 2007 MWC Championships All-Tournament Team ... honored with Second Team All-MWC honors ... ranks first on the team in scoring with a 13.6 points average, and in total points with 449... is third in assists with 93 and ties for third in steals with 35 ... finished with the best free throw percentage on the team (.859) ... has the top percentage in three-point field goal made and attempted with 76 made for a 2.3 average and attempts with 222 for a 6.7 average ... when playing in MWC regular season contests, finished the year ranked fourth in scoring, seventh in assists, third in free throw percentage, eighth in three-point field goal percentage and first in three-point field goals made, and was third in the assist/turnover ratio category ... in all MWC games, ranked eighth in scoring, fourth in free throw percentage, 10th in assists, third in three-point field goals made ... grabbed a new season high in rebounds with nine in the semifinal game of the MWC Champs., vs. Utah on 03/09/07 ... picked up new season and career highs in points with 31 @ Wyoming on 02/15/07 and was named MWC Player of the Week on 02/19/07 for that performance marking her third Player of the Week award this season and career ... was honored with her second MWC Player of the Week honor on Feb. 5, 2007 for her scoring performance vs TCU (21 pts, 3 rebounds, 4 assists, 8-8 at the free throw line) ... tallied a new career high in three-pointers made in a game with eight vs. Weber State on 12/14/06 ... garnered first ever MWC Player of the Week honor on 12/18/06 for her stellar performance vs. Weber State which included a total of 30 points, half of those were from three point range ... scored in double figures in 23 of the 33 games played.

Gillespie Stats:

Yr	G/GS	FG-FGA %	FT-FTA %	3-pts %	Pts.	Reb.	A.	St.	To.
05	30/13	80-204.392	20-26.769	49-134 .366	229	87	44	27	46
06	32/32	117-289.405	36-49.735	58-160 .363	328	121	96	44	69
07	33/33	144-383.376	76-88.864	75-214 .350	439	119	92	34	73
TS	95/78	341-876.389	132-163.810	182-508.358	996	327	232	105	188

Gillespie

Points:

Rebounds:

Assists:

3-PTFG's Made:

Steals:

Blocks:

Career Highs:

31 @ Wyoming 02/15/07

10 vs. UNLV on 1/11/06

7 vs. UNM 02/02/06

8 vs. Weber St. 12/14/06

6 @ SDSU 02/22/06

2 @ Harvard 12/02/06

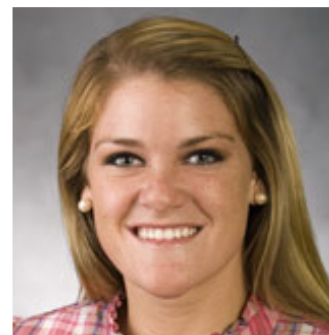
◆ **Lauren Riley-Varley** ◆

Center

6-3, Senior

San Clemente, CA

52



At BYU

JUNIOR - (2006-2007): Final player notes: Played in all games, started the final 26 ... named to the 2007 MWC Championships All-Tournament Team ... garnered Honorable Mention All-MWC honors ... ranks second in field goal percentage with .548 and is third in field goals made with a total of 108 for a 3.3 average ... finished the year in fourth place in both points (243) and in scoring average 7.4 points per game ... places second in rebounds and in rebound average with a total of 216 for a 6.5 average per contest ... is in first place in defensive rebounds and second in offensive rebounds with 4.1 and 3.2 respectively ... tops on the team in blocked shots with a total of 31 on the year ... during the MWC regular season schedule, finished second in rebounding, first in field goal percentage, tied for third place in blocked shots, was fourth in offensive boards and seventh in the defensive rebound category ... when playing in all MWC games, was second in the field goal percentage category, ninth in two other categories, rebounding and blocked shots, and fifth and 12th in offensive and defensive rebounds categories ... notched her fifth double double of the season and career with 10 points and 14 rebounds vs. UNM in the MWC Champ., on 03/10/07, the 14 rebounds were a new season high ... tallied her fourth double double of the season and fourth overall with the 11 points and 10 rebounds vs. SDSU on 02/24/07 ... picked up her fourth double double of the season and fourth overall with 18 points and 11 rebounds vs. UNM on 02/10/07 ... the 18 points in the game were new season and career highs as well ... she had five blocks vs. AFA on 02/08/07 which are new season and career highs ... recorded her third double double of her career and first this year with 10 points and 10 rebounds vs. TCU on 02/01/07 ... in the game @ AF on 1/06/07 grabbed 11 rebounds, her second best of the year ... in the game vs. CSUN on 12/09/06 grabbed a season and career high four steals ... scored in double figures in 10 games including five MWC contests.

Riley Statistics

Yr	G/GS	FG-FGA %	FT-FTA %	3-pts %	Pts.	Reb.	A.	St.	Bl.	To
05	28/0	23-51.451	10-21 .476	0-0 .000	56	47	3	2	8	24
06	32/0	84-165.509	25-67.373	0-0 .000	193	174	15	25	18	64
07	33/26	108-197.548	27-68.397	0-0 .000	243	216	22	20	31	77
TS	93/26	215-413.521	62-156.397	0-0 .000	492	437	40	47	57	165

Riley

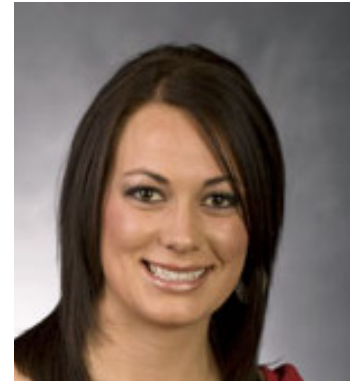
Career Highs:

- Points:** 18 vs. UNM 02/10/07
- Rebounds:** 14 vs. UNM 03/10/07
- Assists:** 3 vs. Oklahoma 03/20/06
- Steals:** 4 vs. CSUN 12/09/06
- Blocks:** 5 vs. AF 02/08/07

◆ **Ashley Cheesman** ◆

Forward
6-0, Senior
Orem, Utah

5



At BYU

JUNIOR - (2006-2007): Final player notes: Played in all games, and started in the second half of the game vs. AF in the MWC Tournament on 03/07/07 ... grabbed a new season high in rebounds with six vs. AF on 03/07/07 ... picked up a new season and career high in points with eight vs. UNLV on 01/20/07 ... as of 01/23/07 had the same number of points and rebounds on the year with (33) and finished the season with a total of 72 points, and 57 rebounds ... picked up five rebounds vs. ISU on 11/10/06 in her first contest as a Cougar ... played an average of 9.9 minutes per game with a season high of 22 in the AF game on 03/07/07.

Cheesman Statistics

Yr	G/GS	FG-FGA %	FT-FTA %	3-pts %	Pts.	Reb.	A.	BL.	St.	TO.
07	33/0	31-70.443	9-15.600	1-11 .091	72	57	14	3	11	29

Cheesman

	Career Highs
Points:	8 vs. AF 03/07/07
Rebounds:	6 vs. AF 03/07/07
Assists:	2 vs. AF 03/07/07
Steals:	2 vs. AF 03/07/07
Blocks:	3 vs. AF 03/07/07

◆ **Shawnee Slade**
Guard/Forward
5-11, Junior
Taylorsville, Utah

32



At BYU

SOPHOMORE - (2006-2007): Final player notes: Played in all games starting in the first seven ... ranks third in scoring and in rebounds with 7.8 points and 4.5 boards per game ... finished ranked third on the team in total rebounds with 150, third in both offensive and defensive rebounds with a total of 46 and 104 respectively ... ranked in fourth place in both assists with a total of 69 for a 2.1 average and in steals with a total of 35 for a 1.1 average ... is second on the team in field goal attempts (8.7) average and fourth in field goals made (3.1) average ... in the MWC Champs., game vs. UNM picked up her 10th game scoring in double digits with 14 ... in the game vs. TCU tallied her ninth double figure game ... she had three back to back double figure games with (13) at the AFA game on 01/06/07, (16) at UNM on 01/10/07, and (11) vs. Wyoming on 01/13/07 ... picked up a new season and career high four three-pointers in a game @ UNM on 1/10/07 ... in the league game vs. TCU on 02/01/07 picked up a new season high in assists with five ... had a season and career high four steals vs. AF on 01/06/07 ... notched her second season and career double double with 22 points and 10 rebounds vs. SCU on 11/22/06, the 22 points in that game were new season and career high ... also in that game went .916 (11-12) from the free throw line, a new season and career best ... picked up first career and season double double with 10 points and 10 rebounds vs. ISU on 11/10/06 ... in the same game had her first career start, and the 10 rebounds are a new career high ... named MWC Player of the Week on 11/10/06 for her achievements in the ISU game.

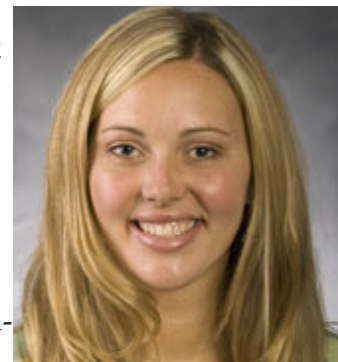
Statistics

Yr	G/GS	FG-FGA %	FT-FTA %	3-pts %	Pts.	Reb.	A.	St.	Bl.	To.
06	32/0	38-101.376	21-29.724	6-17 .353	103	70	19	16	1	22
07	32/7	99-278.356	29-53.547	22-76.289	249	147	67	35	9	63
TS	64/7	137-379.361	50-82.610	28-93.301	352	217	86	51	10	85

Slade	Career Highs:
Points:	22 vs. SCU 11/22/06
Rebounds:	10 vs. SCU 11/22/06
Assists:	5 vs. TCU 02/01/07
3-PT FG's Made:	4 @ UNM 01/10/07
Steals:	4 @ AF 01/06/07
Blocks:	2 vs. SDSU 02/24/07

◆ **Cassie King**
Center
6-3, Junior
Provo, UT

54



At BYU

SOPHOMORE - (2006-2007): Final players notes: Played in 32 of 33 games ... had doubled the number of points, assists and steals as of 01/29/07 from her freshman year ... finished the season with a total of 111 points, 12 assists and seven steals ... tied for fourth place in the blocked shots category with a total of 14 on the year ... averaged 11.6 points of playing time ... grabbed nine rebounds @ UVSC on 12/16/06 for a new season and career high in that category in that same game @ UVSC had two blocked shots ... picked up new season and career highs in points with 11 @ Harvard on 11/29/06.

Statistics

Yr	G/GS	FG-FGA %	FT-FTA %	3-pts %	Pts.	Reb.	A.	BL.	St.	TO.
06	23/0	7-22.318	9-12.750	0-1 .000	23	30	1	7	2	6
07	32/0	45-95.474	16-27.600	5-18.593	111	84	12	14	7	36
TS	55/0	52-117.444	25-39.641	5-19.263	134	114	13	21	9	42

King

Career Highs

Points: 11 @ Harvard 11/29/06
Rebounds: 9 @ UVSC 12/16/06
Steals: 2 @ Harvard 11/29/06
Blocks: 2 @ UVSC 12/16/06

◆ **Jaime Judkins**

Guard

5-6, Sophomore

Salt Lake City, UT

13



At BYU

FRESHMAN - (2006-2007): Final player notes: Played in a total of 23 games averaging 3.1 minutes of playing time ... of those 23 contests, eight were against conference opponents and she also saw action in the NCAA first round game vs. Louisville on 03/17/07 ... picked up a season high in points with three in the first game of the year vs. ISU on 11/10/06 ... grabbed a season and career high rebounds with three @ Baylor on 11/16/06 ... dished out a season and career high three assists vs. AF on 02/08/07, and in that same game played a new season and career high 13 minutes.

Statistics

Yr	G/GS	FG-FGA %	FT-FTA %	3-pts %	Pts.	Reb.	A.	BL.	St.	To.
07	23/0	1-6 .167	2-5 .400	1-4 .250	5	13	7	0	2	11

Judkins

Points:

Rebounds:

3-PT FG's made:

Assists:

Steals:

Career Highs:

3 vs. ISU on 11/10/06

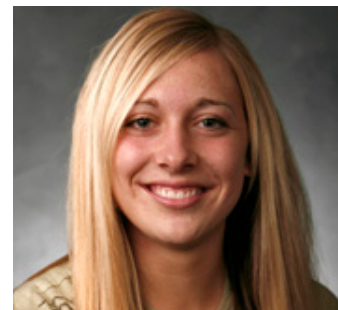
3 @ Baylor 11/16/06

3 vs. AF 02/08/07

1 vs. AF 02/08/07

◆ **Haley Hall**
Guard
5-4, Freshman
Syracuse, UT

33



AT BYU

(FRESHMAN) 2006-07: Final player notes: Suffered season ending injury with a torn ACL to her left knee in the game @ New Mexico State on 12/06/06 ... Had played in all games to date ... picked up a season and career 15 points @ No. 4 Stanford on 11/10/06 to lead all scores in that game ... had four three-pointers in the same game ... scored in double figures in two games to date (15) @ Stanford, (10) @ Harvard.

Statistics

Yr	G/GS	FG-FGA %	FT-FTA %	3-pts %	Pts.	Reb.	A.	BL.	St.	TO.
06/07	7/0	15-39 .385	5-8 .625	9-20 .450	44	12	17	1	6	19

Hall

Points:

Rebounds:

3-PTFG's Made:

Assists:

Steals:

Blocks:

Career Highs:

15 @ Stanford 11/13/06

3 @ Hartford 12/02/06

4 @ Stanford 11/13/06

4 @ Harvard 11/29/06

2 @Hartford 12/02/06

◆ Lauren Nichols
Forward
6-0, Freshman
Irvine, CA

0



At BYU

FRESHMAN - (2006-2007): Redshirt

BEFORE BYU: Three-year basketball letterwinner ... Coach's Award senior year ... Mojave River League All-League ... Mojave River League Senior Award ... Outstanding Player Award at 13th Annual High Desert All-Star game ... team played in the semifinals of the CIF Southern Section Championships ... Principal's Honor Roll ... National Honor Roll ... Scholar Athlete ... 2006 attendant at the National Youth Leadership Forum on Defense, Intelligence, and Diplomacy ... 2005 Congressional Student Leadership Conference attendee ... two-year letterwinner in track and field and one year letterwinner in volleyball ... CIF Southern Section Volleyball Championships Quarterfinals in 2005 .. Division 2AA Track Championships in high jump, triple jump, long jump in 2005 and 2006 ... All-league in track and field in the high jump, triple jump, long jump and discuss ... Played for the West Coast Elite Basketball Club Team for two years 2004 AGS All-America Award ... 2004 AGS Super 60 ... 2002 AGS Elite 80 ... People to People Sports Ambassador ... Blue Chip All-Star ... Street and Smith All-America Honorable Mention ... USA Junior Nationals All-State High School competition attendee.

◆ Sarah Red
Guard/Forward
5-11, Junior
Provo, UT

14



At BYU

2006-07: (Redshirt)

OTHER COLLEGE

At Utah: Freshman (2004-05): Played in eight games for an average of 3.6 minutes ... of those games four were on the road ... picked up a season high three points @AF on 01/20/05 ... finished the season with an 12.5 field goal percentage and 50.0 free throw percentage.

BEFORE BYU: Four-year letterwinner in basketball ... earned all-state honors for Timpview High School as a senior ... played for a four-time regional championship team ... helped lead team to state championship game ... named Most Valuable Player at the Nike Tournament of Champions ... played for Utah Pride an A.A.U. team ... four-year letterwinner in volleyball ... garnered all-state honors.

INCOMING FRESHMEN PLAYER BIOS

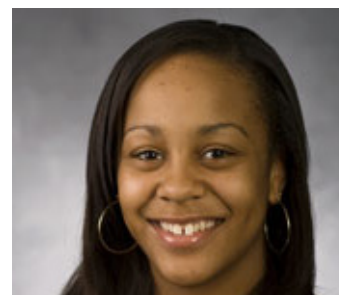
◆ **Jazmine Foreman** ◆

Guard

5-5, Freshman

Vancouver, WA

3



BEFORE BYU

Four-year letterwinner in basketball ... team MVP (2006-07) ... team captain ... First Team All-State ... graduated with honors ... honor roll ... played on Premier Elite Club Team for two years ... named to Oregon City All-Tournament Team

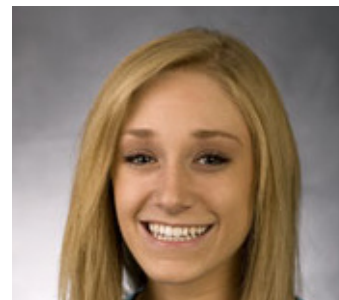
◆ **Stephanie Buhler** ◆

Forward

6-0, Freshman

Oregon City, OR

21

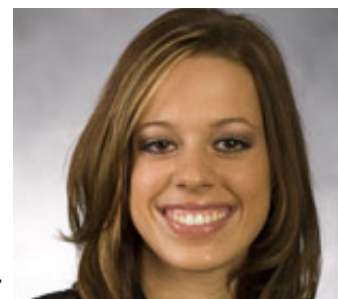


BEFORE BYU

Four-year letterwinner in basketball ... competed one year at Sandy HS where she garnered Honorable Mention honors. At Oregon City HS ...team was Three Rivers League Champions all three seasons ... named Second Team All- League her senior year ... ranks third all time in three-point shooting ... is also tops in the free throw category ... garnered Second Team All League honors during the 2006-07 season ... ranks second in state as a three-point shooter ... two-time Honorable Mention All State ... named Oregonian Athlete of the Week ... named to the All-Tournament Team at the Delaware and the Gillett, Wyoming Classics ... in state high school competition, the 2004-05 team finished third ... in 2005-06 team finished second and in 2006-07 team ended the year in sixth place ... Played on two club teams (Triple Threat Oregon two years) ... and on (Clutch Players for three years)

◆ **Mindy Nielson** ◆
Guard
5-10, Freshman
Centennial, CO

22



BEFORE BYU

Four-year letterwinner in basketball ... First Team All-State ... high school Honor Roll ... played three seasons for Mile Hi Magic ... third place finish in Oregon City tournament ... First Team All-State.

◆ **Coriann Wood** ◆
Forward
6-1, Freshman
Basin City, WA

23



BEFORE BYU

Four-year letterwinner in basketball ... two-time First Team All-League ... Third Team All-State ... two-time league MVP ... First Team All-Area ... Honorable Mention ... team was league champs in 2003-04 and finished second in the district ... in 2004-05 team finished second in the league and eighth at the 2A State Tournament ... was voted best rebounder on the team and was the leading scorer in the league with an average of 17.3 ppg ... was team captain in 2006-07 ... voted best rebounder and scorer ... voted most athletic ... and was leading scorer in league with 21.0 ppg ... was district tournament MVP ... named MVP All-Area ... 1A state tournament MVP ... named Associated Press First Team ... all-time leading scorer at high school with (1,403 pts.) ... Tri-city Herald Female Athlete of the Year ... four-year letterwinner in track and field ... team was district champs in 2003-04 ... Third Team All-League ... in javelin was first in league and second in district ... in 2004-05 finished fifth in 2A state and second in district in the discus ... and first and fifth in 4x200 ... in 2005-06 broke school record in discus and team was league and district champs. ... four-year letterwinner in soccer ... team MVP and captain senior year ... three-time Second Team All-League ... team was league and district champs during two seasons ... was on the Superintendent's List Honor Roll all four years and also had a 4.0 GPA all four years.

◆ Keialani Moeaki ◆

Forward
6-2, Freshman
Warrenville, IL

45



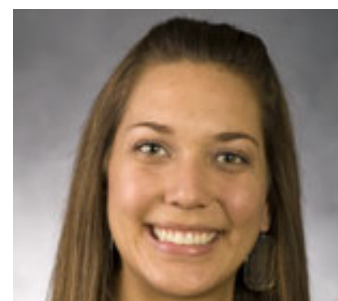
BEFORE BYU

Four-year letterwinner in basketball ... team MVP all four years ... second leading career scorer at high school ... second leading career rebounder at high school ... two-time MVP at Benet Tournament ... three-time All-Tournament Team in Shaumburg Tournament ... 2007 Walter Payton Player of the Year ... Captain All-Area Team in 2007 ... three-time All-Area ... four-time Anonymous All-Conference ... named Top 20 players in Illinois ... three-time All-State player ... ranked 51st nationally and ranked 11th in position nationally ... letterwinner in tennis ... was All-Conference Champs as part of no. 2 doubles team during sophomore season ... played two seasons for Illinois Full Package.

◆ Megan Marks ◆

Forward
6-2, Freshman
South Jordan, UT

55



BEFORE BYU

Four-year letterwinner in basketball ... team MVP ... Leadership Award ... Team Captain ... Female Athlete of the Year ... Region MVP ... All Region Team ... All-State ... 5A MVP ... team won 2007 State Champs ... Street & Smith Honorable Mention ... four-year letterwinner in volleyball ... All Region ... Team MVP ... four-year high school Honor Roll ... played two seasons for Utah Sky ... team captain.

WALK-ON PLAYER BIOS

◆ **Amy Alleto** ◆

Guard

5-9, Sophomore

Parker, CO

31



BEFORE BYU

Four-year letterwinner in basketball ... Heart Award 2004 ... Best Defensive Player 2005 ... Team MVP 2005 and 2006 ... 2006 Most Inspirational Award ... team captain in 2006 ... Region Honorable Mention in 2004 and 2005 ... Second Team All-Conference in 2006 ... First Team Academic Award 2006 ... four-year letterwinner in cross country ... Second Team All-League in cross country ... four-year letterwinner in track and field ... placed fifth, eleventh and eighth place in shot put ... First-Team All-Region in shot put ... National Honor Society ... Social Studies Student Award.

◆ **Brooke Jackson** ◆

Guard

5-8, Freshman

Mesa, AZ

12



BEFORE BYU

Four-year letterwinner in basketball ... holds 18 of 21 school records ... Best Female Athlete Award ... Team MVP ... two-time East Region Player of the Year ... First Team All Region (sophomore) ... Second Team All-Region (freshman) ... two-time All-State Team ... Second Team All-State (sophomore) ... Honorable Mention (freshman) ... two-time East Valley First Team ... McDonald's All-America nominee in 2007 ... four-year letterwinner in track ... All-State (freshman) ... three-year letterwinner in volleyball ... East Valley Player of the Year in volleyball 2006-07 ... First Team (junior) ... Second Team All-State (senior) ... Honorable Mention (junior) ... high school Honor Roll ... played one season for California Storm ... team finished 5th at Nike Nationals.

◆ Marie Beck ◆

Guard
5-8, Freshman
Oxnard, CA

10



BEFORE BYU

School Valedictorian, Ventura County Star Athlete ... AP Scholar ... Top Honors Scholar ... Three-year letterwinner in basketball ... MVP in 2007 ... Athlete of the Year in 2007 ... Second Team All League in 2006 ... First Team All League 2007 ... Second Team All County 2007 ... four-year letterwinner in softball ... three time softball MVP 2005-2007.

◆ Marianne Bell ◆

Forward
6-1, Freshman
Ashburn, VA

34



BEFORE BYU

National Honor Society ... Athletic Honor Roll ... four-year letterwinner in basketball (three at Stone Bridge HS and one at Bruton HS) ... Co-MVP in 2006 ... MVP in 2007 ... holds school (Stone Bridge) record for most points scored in a season and career ... hold record for most rebounds in a season and career ... Second Team All District (2005 and 2006) ... First Team All-District in 2007 ... First Team All-Region in 2007 ... two-year letterwinner in volleyball ... First Team All-District and Region in 2007... Second Team All-District 2006 ... Honorable Mention All-State 2007 ... one-year letterwinner in tennis ... played one season for Potomac Valley Vogues ... team finished ninth at the AAU nationals in 2006.

Brigham Young University
Brigham Young University Combined Team Statistics (as of Mar 19, 2007)
All games

RECORD :	OVERALL	HOME	AWAY	NEUTRAL
ALL GAMES	(23-10)	(12-1)	(9-7)	(2-2)
CONFERENCE	(12-4)	(7-1)	(5-3)	(0-0)
NON-CONFERENCE	(11-6)	(5-0)	(4-4)	(2-2)

## Player	GP-GS	Min--Avg	---TOTAL---		---3-PTS---		---FT-FTA		----REBOUNDS----					PF	FO	A	TO	Blk	Stl	Pts	Avg
			FG-FGA	Pct	3FG-FGA	Pct	Pct	Off	Def	Tot	Avg										
30 GILLESPIE, Mallery.	33-33	1114 33.8	147-398	.369	76-222	.342	79-92	.859	32	90	122	3.7	69	1	93	76	12	35	449	13.6	
45 WRIGHT, Dani.....	33-33	806 24.4	167-281	.594	10-26	.385	98-155	.632	105	118	223	6.8	116	7	27	100	25	14	442	13.4	
32 SLADE, Shawnee....	33-7	908 27.5	102-288	.354	23-80	.288	29-53	.547	46	104	150	4.5	62	1	69	63	9	35	256	7.8	
52 RILEY, Lauren.....	33-26	679 20.6	108-197	.548	0-0	.000	27-68	.397	82	134	216	6.5	110	7	22	77	31	20	243	7.4	
15 KEELE, Jennie.....	33-33	945 28.6	75-195	.385	24-95	.253	31-51	.608	27	94	121	3.7	74	3	98	74	14	47	205	6.2	
35 JOHNSEN, Melinda..	33-33	1117 33.8	71-177	.401	24-82	.293	32-57	.561	10	81	91	2.8	68	0	147	67	16	56	198	6.0	
54 KING, Cassie.....	32-0	371 11.6	45-95	.474	5-18	.278	16-27	.593	23	61	84	2.6	41	0	12	36	14	7	111	3.5	
05 CHEESMAN, Ashley..	33-0	327 9.9	31-70	.443	1-11	.091	9-15	.600	14	43	57	1.7	26	0	14	29	3	11	72	2.2	
33 HALL, Haley.....	8-0	173 21.6	15-40	.375	9-20	.450	5-8	.625	4	9	13	1.6	19	2	17	20	1	6	44	5.5	
22 FADDIS, Brittany..	21-0	83 4.0	5-19	.263	0-5	.000	12-17	.706	11	12	23	1.1	5	0	3	10	0	5	22	1.0	
13 JUDKINS, Jaime....	23-0	71 3.1	1-6	.167	1-4	.250	2-5	.400	5	8	13	0.6	9	0	7	11	0	2	5	0.2	
10 EYESTONE, Erica....	5-0	9 1.8	1-4	.250	1-1	1.000	2-5	.400	0	0	0	0.0	0	0	0	1	0	0	5	1.0	
31 AINA, Rachel.....	15-0	41 2.7	1-12	.083	0-7	.000	0-1	.000	0	2	2	0.1	1	0	3	5	0	1	2	0.1	
10 RICE, Kaitln.....	3-0	4 1.3	0-1	.000	0-1	.000	0-0	.000	0	0	0	0.0	1	0	0	0	0	0	0	0.0	
10 ALLETTTO, Amy.....	1-0	1 1.0	0-0	.000	0-0	.000	0-0	.000	0	0	0	0.0	0	0	0	0	0	0	0	0.0	
TEAM.....									53	84	137	4.2	0		7						
Total.....	33	6649	769-1783	.431	174-572	.304	342-554	.617	412	840	1252	37.9	601	21	512	576	125	239	2054	62.2	
Opponents.....	33	6650	641-1794	.357	151-479	.315	453-628	.721	388	738	1126	34.1	519	-	358	507	95	240	1886	57.2	

TEAM STATISTICS	BY	OPP	DATE	OPPONENT	W/L	SCORE	ATTEND			
SCORING.....	2054	1886	11-10-06	ISU	W	73-50	2388			
Points per game.....	62.2	57.2	11/13/06	at Stanford	W	55-52	-			
Scoring margin.....	+5.1	-	\$11/16/06	at Baylor Lady Bears	L	58-84	3007			
FIELD GOALS-ATT.....	769-1783	641-1794	11/17/06	at Fresno State	L	51-61	3144			
Field goal pct.....	.431	.357	11-22-06	SCU BRONCOS	W	77-63	585			
3 POINT FG-ATT.....	174-572	151-479	11/29/06	at Harvard	W	66-51	156			
3-point FG pct.....	.304	.315	12/02/06	at HARTFORD	L	43-60	1207			
3-pt FG made per game..	5.3	4.6	12/6/06	at NMSU	W	60-43	476			
FREE THROWS-ATT.....	342-554	453-628	12/9/06	CAL STATE NORTHRIDGE	W	55-48	749			
Free throw pct.....	.617	.721	12-14-06	WEBER STATE UNIVERSI	W	79-42	592			
REBOUNDS.....	1252	1126	12/16/06	at Utah Valley State	W	71-57	634			
Rebounds per game.....	37.9	34.1	12-20-06	UC RIVERSIDE	W	66-57	374			
Rebounding margin.....	+3.8	-	12/30/06	at Oregon	L	61-70	3100			
ASSISTS.....	512	358	*1/6/07	at Air Force	W	59-46	417			
Assists per game.....	15.5	10.8	*1-10-07	at New Mexico	W	63-59	8454			
TURNOVERS.....	576	507	*01-13-07	COWGIRLS	W	55-52	781			
Turnovers per game.....	17.5	15.4	*01-18-07	COLORADO ST. RAMS	W	69-56	659			
Turnover margin.....	-2.1	-	*01-20-07	UNLV REBELS	W	64-59	1072			
Assist/turnover ratio..	0.9	0.7	*1-25-07	at San Diego State	W	54-49	456			
STEALS.....	239	240	*01/27/07	at Utah	L	54-64	2178			
Steals per game.....	7.2	7.3	*02-01-07	TCU LADY FROGS	W	69-65	672			
BLOCKS.....	125	95	*02-08-07	AF FALCONS	W	70-40	854			
Blocks per game.....	3.8	2.9	*02-10-07	NEW MEXICO LOBOS	LOT	75-80	1313			
WINNING STREAK.....	0	-	*2/15/07	at Wyoming Cowgirls	W	69-62	2624			
Home win streak.....	2	-	*02-17-07	at Colorado State	W	67-50	1421			
ATTENDANCE.....	14802	36244	*02/21/07	at UNLV	LOT	71-76	555			
Home games-Avg/Game....	13-1139	16-1919	*02-24-07	SDSU AZTECS	W	65-41	745			
Neutral site-Avg/Game..	-	4-1386	*02-28-07	UTAH UTES	W	59-55	4018			
			*3/3/07	at TCU	L	48-62	2873			
SCORE BY PERIODS:	1st	2nd	OT	Total	03-07-07	vs Air Force	W	72-40	-	
					03-09-07	vs Utah	W	55-49	5542	
Brigham Young University.....	988	1052	16	-	2056	03-10-07	vs New Mexico	L	49-63	-
Opponents.....	870	990	26	-	1886	03/17/07	vs Louisville	L	54-80	-

Brigham Young University
Brigham Young University Combined Team Statistics (as of Mar 19, 2007)
Conference games

RECORD:	OVERALL	HOME	AWAY	NEUTRAL
ALL GAMES	(12-4)	(7-1)	(5-3)	(0-0)
CONFERENCE	(12-4)	(7-1)	(5-3)	(0-0)
NON-CONFERENCE	(0-0)	(0-0)	(0-0)	(0-0)

## Player	GP-GS	Min--Avg	---TOTAL---		---3-PTS---		FT-FTA	Pct	----REBOUNDS----				PF	FO	A	TO	Blk	Stl	Pts	Avg
			FG-FGA	Pct	3FG-FGA	Pct			Off	Def	Tot	Avg								
45 WRIGHT, Dani.....	16-16	422 26.4	86-147	.585	8-16	.500	62-97	.639	58	60	118	7.4	55	2	15	50	15	9	242	15.1
30 GILLESPIE, Mallary.	16-16	564 35.2	73-201	.363	42-117	.359	43-49	.878	16	36	52	3.3	35	1	46	35	6	15	231	14.4
52 RILEY, Lauren.....	16-16	360 22.5	62-102	.608	0-0	.000	11-35	.314	45	77	122	7.6	53	4	10	38	21	12	135	8.4
32 SLADE, Shawnee....	16-0	435 27.2	48-140	.343	14-42	.333	6-18	.333	19	45	64	4.0	37	1	33	38	3	14	116	7.3
15 KEELE, Jennie.....	16-16	481 30.1	36-93	.387	14-54	.259	15-27	.556	9	48	57	3.6	39	2	49	30	7	22	101	6.3
35 JOHNSEN, Melinda..	16-16	565 35.3	30-84	.357	11-42	.262	21-36	.583	4	38	42	2.6	36	0	82	31	11	28	92	5.8
05 CHEESMAN, Ashley..	16-0	175 10.9	18-37	.486	0-5	.000	6-6	1.000	6	21	27	1.7	12	0	9	8	1	6	42	2.6
54 KING, Cassie.....	16-0	156 9.8	17-37	.459	1-6	.167	5-9	.556	9	23	32	2.0	15	0	8	16	5	2	40	2.5
22 FADDIS, Brittany...	10-0	39 3.9	3-11	.273	0-3	.000	2-4	.500	7	3	10	1.0	3	0	1	6	0	2	8	0.8
13 JUDKINS, Jaime....	11-0	32 2.9	0-2	.000	0-2	.000	1-2	.500	2	1	3	0.3	1	0	3	4	0	1	1	0.1
24 EYESTONE, Erica...	2-0	4 2.0	0-0	.000	0-0	.000	1-2	.500	0	0	0	0.0	0	0	0	1	0	0	1	0.5
31 AINA, Rachel.....	5-0	13 2.6	0-2	.000	0-2	.000	0-0	.000	0	1	1	0.2	0	0	1	3	0	1	0	0.0
10 RICE, Kaitln.....	2-0	3 1.5	0-1	.000	0-1	.000	0-0	.000	0	0	0	0.0	1	0	0	0	0	0	0	0.0
10 ALLETT, Amy.....	1-0	1 1.0	0-0	.000	0-0	.000	0-0	.000	0	0	0	0.0	0	0	0	0	0	0	0	0.0
TEAM.....																				
										22	50	72	4.5	0		4				

Total.....	16	3250	373-857	.435	90-290	.310	173-285	.607	197	403	600	37.5	287	10	257	264	69	112	1009	63.1
Opponents.....	16	3250	311-858	.362	69-221	.312	225-310	.726	188	360	548	34.2	255	-	180	243	38	109	916	57.2

TEAM STATISTICS	BY	OPP	DATE	OPPONENT	W/L	SCORE	ATTEND
SCORING.....	1009	916	*1/6/07	at Air Force	W	59-46	417
Points per game.....	63.1	57.2	*1-10-07	at New Mexico	W	63-59	8454
Scoring margin.....	+5.8	-	*01-13-07	COWGIRLS	W	55-52	781
FIELD GOALS-ATT.....	373-857	311-858	*01-18-07	COLORADO ST. RAMS	W	69-56	659
Field goal pct.....	.435	.362	*01-20-07	UNLV REBELS	W	64-59	1072
3 POINT FG-ATT.....	90-290	69-221	*1-25-07	at San Diego State	W	54-49	456
3-point FG pct.....	.310	.312	*01/27/07	at Utah	L	54-64	2178
3-pt FG made per game..	5.6	4.3	*02-01-07	TCU LADY FROGS	W	69-65	672
FREE THROWS-ATT.....	173-285	225-310	*02-08-07	AF FALCONS	W	70-40	854
Free throw pct.....	.607	.726	*02-10-07	NEW MEXICO LOBOS	LOT	75-80	1313
REBOUNDS.....	600	548	*2/15/07	at Wyoming Cowgirls	W	69-62	2624
Rebounds per game.....	37.5	34.2	*02-17-07	at Colorado State	W	67-50	1421
Rebounding margin.....	+3.3	-	*02/21/07	at UNLV	LOT	71-76	555
ASSISTS.....	257	180	*02-24-07	SDSU AZTECS	W	65-41	745
Assists per game.....	16.1	11.3	*02-28-07	UTAH UTES	W	59-55	4018
TURNOVERS.....	264	243	*3/3/07	at TCU	L	48-62	2873
Turnovers per game.....	16.5	15.2					
Turnover margin.....	-1.3	-					
Assist/turnover ratio..	1.0	0.7					
STEALS.....	112	109					
Steals per game.....	7.0	6.8					
BLOCKS.....	69	38					
Blocks per game.....	4.3	2.4					
WINNING STREAK.....	0	-					
Home win streak.....	2	-					
ATTENDANCE.....	10114	18978					
Home games-Avg/Game....	8-1264	8-2372					
Neutral site-Avg/Game..	-	0-0					

SCORE BY PERIODS:	1st	2nd	OT	Total
Brigham Young University.....	492	503	16	- 1011
Opponents.....	408	482	26	- 916

Brigham Young University
Brigham Young University Overall/Conference Statistics (as of Mar 19, 2007)
All games

SUMMARY	OVERALL STATISTICS										CONFERENCE STATISTICS											
	GP	GS	Min/G	FG%	3PT%	FT%	R/G	A/G	STL	BLK	PTS/G	GP	GS	Min/G	FG%	3PT%	FT%	R/G	A/G	STL	BLK	PTS/G
GILLESPIE, Mallary..	33	33	33.8	.369	.342	.859	3.7	2.8	35	12	13.6	16	16	35.2	.363	.359	.878	3.3	2.9	15	6	14.4
WRIGHT, Dani.....	33	33	24.4	.594	.385	.632	6.8	0.8	14	25	13.4	16	16	26.4	.585	.500	.639	7.4	0.9	9	15	15.1
SLADE, Shawnee.....	33	7	27.5	.354	.288	.547	4.5	2.1	35	9	7.8	16	0	27.2	.343	.333	.333	4.0	2.1	14	3	7.3
RILEY, Lauren.....	33	26	20.6	.548	.000	.397	6.5	0.7	20	31	7.4	16	16	22.5	.608	.000	.314	7.6	0.6	12	21	8.4
KEELE, Jennie.....	33	33	28.6	.385	.253	.608	3.7	3.0	47	14	6.2	16	16	30.1	.387	.259	.556	3.6	3.1	22	7	6.3
JOHNSEN, Melinda....	33	33	33.8	.401	.293	.561	2.8	4.5	56	16	6.0	16	16	35.3	.357	.262	.583	2.6	5.1	28	11	5.8
KING, Cassie.....	32	0	11.6	.474	.278	.593	2.6	0.4	7	14	3.5	16	0	9.8	.459	.167	.556	2.0	0.5	2	5	2.5
CHEESMAN, Ashley....	33	0	9.9	.443	.091	.600	1.7	0.4	11	3	2.2	16	0	10.9	.486	.000	1.000	1.7	0.6	6	1	2.6
HALL, Haley.....	8	0	21.6	.375	.450	.625	1.6	2.1	6	1	5.5											
FADDIS, Brittany....	21	0	4.0	.263	.000	.706	1.1	0.1	5	0	1.0	10	0	3.9	.273	.000	.500	1.0	0.1	2	0	0.8
JUDKINS, Jaime.....	23	0	3.1	.167	.250	.400	0.6	0.3	2	0	0.2	11	0	2.9	.000	.000	.500	0.3	0.3	1	0	0.1
EYESTONE, Erica.....	5	0	1.8	.250	1.000	.400	0.0	0.0	0	0	1.0	2	0	2.0	.000	.000	.500	0.0	0.0	0	0	0.5
AINA, Rachel.....	15	0	2.7	.083	.000	.000	0.1	0.2	1	0	0.1	5	0	2.6	.000	.000	.000	0.2	0.2	1	0	0.0
RICE, Kaitln.....	3	0	1.3	.000	.000	.000	0.0	0.0	0	0	0.0	2	0	1.5	.000	.000	.000	0.0	0.0	0	0	0.0
ALLETTO, Amy.....	1	0	1.0	.000	.000	.000	0.0	0.0	0	0	0.0	1	0	1.0	.000	.000	.000	0.0	0.0	0	0	0.0
Total.....	33			.431	.304	.617	37.9	15.5	239	125	62.2	16			.435	.310	.607	37.5	16.1	112	69	63.1
Opponents.....	33			.357	.315	.721	34.1	10.8	240	95	57.2	16			.362	.312	.726	34.2	11.3	109	38	57.2

SCORING	OVERALL STATISTICS								CONFERENCE STATISTICS											
	FG-FGA	FG%	3FG-FGA	3PT%	FT-FTA	FT%	PTS	PTS/G	FG-FGA	FG%	3FG-FGA	3PT%	FT-FTA	FT%	PTS	PTS/G				
GILLESPIE, Mallary..	147	398	.369	76-222	.342	79-92	.859	449	13.6	73	201	.363	42-117	.359	43-49	.878	231	14.4		
WRIGHT, Dani.....	167	281	.594	10-26	.385	98-155	.632	442	13.4	86	147	.585	8-16	.500	62-97	.639	242	15.1		
SLADE, Shawnee.....	102	288	.354	23-80	.288	29-53	.547	256	7.8	48	140	.343	14-42	.333	6-18	.333	116	7.3		
RILEY, Lauren.....	108	197	.548	0-0	.000	27-68	.397	243	7.4	62	102	.608	0-0	.000	11-35	.314	135	8.4		
KEELE, Jennie.....	75	195	.385	24-95	.253	31-51	.608	205	6.2	36	93	.387	14-54	.259	15-27	.556	101	6.3		
JOHNSEN, Melinda....	71	177	.401	24-82	.293	32-57	.561	198	6.0	30	84	.357	11-42	.262	21-36	.583	92	5.8		
KING, Cassie.....	45	95	.474	5-18	.278	16-27	.593	111	3.5	17	37	.459	1-6	.167	5-9	.556	40	2.5		
CHEESMAN, Ashley....	31	70	.443	1-11	.091	9-15	.600	72	2.2	18	37	.486	0-5	.000	6-6	1.000	42	2.6		
HALL, Haley.....	15	40	.375	9-20	.450	5-8	.625	44	5.5											
FADDIS, Brittany....	5	19	.263	0-5	.000	12-17	.706	22	1.0	3	11	.273	0-3	.000	2-4	.500	8	0.8		
JUDKINS, Jaime.....	1	6	.167	1-4	.250	2-5	.400	5	0.2	0	2	.000	0-2	.000	1-2	.500	1	0.1		
EYESTONE, Erica.....	1	4	.250	1-1	1.000	2-5	.400	5	1.0	0	0	.000	0-0	.000	1-2	.500	1	0.5		
AINA, Rachel.....	1	12	.083	0-7	.000	0-1	.000	2	0.1	0	2	.000	0-2	.000	0-0	.000	0	0.0		
RICE, Kaitln.....	0	1	.000	0-1	.000	0-0	.000	0	0.0	0	1	.000	0-1	.000	0-0	.000	0	0.0		
ALLETTO, Amy.....	0	0	.000	0-0	.000	0-0	.000	0	0.0	0	0	.000	0-0	.000	0-0	.000	0	0.0		
Total.....	769	1783	.431	174-572	.304	342-554	.617	2054	62.2	373	857	.435	90-290	.310	173-285	.607	1009	63.1		
Opponents.....	641	1794	.357	151-479	.315	453-628	.721	1886	57.2	311	858	.362	69-221	.312	225-310	.726	916	57.2		

TOTALS	OVERALL STATISTICS										CONFERENCE STATISTICS									
	O-REB	D-REB	TOTAL	PF	FO	A	TO	A/TO	Hi	Pts	O-REB	D-REB	TOTAL	PF	FO	A	TO	A/TO	Hi	Pts
GILLESPIE, Mallary..	32	90	122	69	1	93	76	1.2	31	16	36	52	35	1	46	35	1.3	31		
WRIGHT, Dani.....	105	118	223	116	7	27	100	0.3	30	58	60	118	55	2	15	50	0.3	30		
SLADE, Shawnee.....	46	104	150	62	1	69	63	1.1	22	19	45	64	37	1	33	38	0.9	16		
RILEY, Lauren.....	82	134	216	110	7	22	77	0.3	18	45	77	122	53	4	10	38	0.3	18		
KEELE, Jennie.....	27	94	121	74	3	98	74	1.3	16	9	48	57	39	2	49	30	1.6	16		
JOHNSEN, Melinda....	10	81	91	68	0	147	67	2.2	12	4	38	42	36	0	82	31	2.6	10		
KING, Cassie.....	23	61	84	41	0	12	36	0.3	11	9	23	32	15	0	8	16	0.5	7		
CHEESMAN, Ashley....	14	43	57	26	0	14	29	0.5	8	6	21	27	12	0	9	8	1.1	8		
HALL, Haley.....	4	9	13	19	2	17	20	0.9	15											
FADDIS, Brittany....	11	12	23	5	0	3	10	0.3	5	7	3	10	3	0	1	6	0.2	4		
JUDKINS, Jaime.....	5	8	13	9	0	7	11	0.6	3	2	1	3	1	0	3	4	0.8	1		
EYESTONE, Erica.....	0	0	0	0	0	0	1	0.0	3	0	0	0	0	0	0	1	0.0	1		
AINA, Rachel.....	0	2	2	1	0	3	5	0.6	2	0	1	1	0	0	1	3	0.3	0		
RICE, Kaitln.....	0	0	0	1	0	0	0	0.0	0	0	0	0	1	0	0	0	0.0	0		
ALLETTO, Amy.....	0	0	0	0	0	0	0	0.0	0	0	0	0	0	0	0	0	0.0	0		
Total.....	412	840	1252	601	21	512	576	0.9	79	197	403	600	287	10	257	264	1.0	75		
Opponents.....	388	738	1126	519	-	358	507	0.7	84	188	360	548	255	4	180	243	0.7	80		