



# BYU Women's Volleyball

## Weekly Release #7 - Oct. 8-10

### THIS WEEK'S ACTION:

BYU Cougars host New Mexico and TCU  
 Provo, Utah • Smith Fieldhouse (5,000) • Oct. 8, 10  
 GameTracker available at [www.byucougars.com](http://www.byucougars.com)  
 Both matches will be broadcast via BYU TV - <http://www.byub.org/sports/>  
 Thursday's match is at 7 p.m., Saturday's match is at 6 p.m.

### COUGAR MATCHUPS

**THURSDAY, OCT. 8**  
 7 P.M. – BYU VS. NEW MEXICO

**SATURDAY, OCT. 10**  
 6 P.M. – BYU VS. TCU



### 3-1 MWC Cougars Back At Home Thursday, Saturday

PROVO, Utah (Oct. 6, 2009)- After winning two-straight matches, BYU (8-7, 3-1) will return to its home court to take on MWC conference opponents, New Mexico and TCU this week.

"I believe this is a very crucial week for us in terms of the Mountain West Conference Championship," BYU head coach Shay Goulding said Tuesday. "We will play our matches this week one ball at a time and one match at a time, but certainly it is pertinent that we get two wins in order to keep us in a good position for our goals in the conference."

They will first face New Mexico Thursday at 7 p.m. in the Smith Fieldhouse. New Mexico State has an 11-5 overall record with a 3-2 conference record thus far this season. In the history of the matchup with New Mexico, BYU leads 62-11.

"New Mexico lost some significant players from last year," Goulding said. "But they are a well-coached team and a very competitive program so I expect them to be very good."

Saturday the Cougars will look to defend their home court once again as they take on TCU at 6 p.m. TCU has a 15-4 overall record this season and is currently 4-1 in conference play. In the all-time series record against TCU, BYU leads 12-1.

"TCU is similar in strength only they are returning more players from last year and so they will also be strong," Goulding said. "We are prepared and committed to bringing our best out to meet both these teams this week in order to defend the Smith Fieldhouse and to continue to pursue our 2009 goals."

In the Cougars' last outing they defeated the UNLV Rebels 3-0 (25-17,20-17, 25-21). Senior rightside hitter Kayla Walker led the Cougars with 14 kills, nine digs and seven blocks – including two solo blocks. Christina Measom, Christie Carpenter and Camilla Phillips also contributed six kills each while Nicole Warner had five. Setter Kiana Rogers had 30 assists and nine digs while Morgan Lloyd Sorensen had 10 digs.

Both games will be shown on BYU TV and BYU LIVE video. BYU LIVE video can be viewed online by visiting the schedule page on [www.byucougars.com](http://www.byucougars.com).

### QUICK REFERENCE

BYU 2009 Record: 8-7  
 BYU MWC Record: 3-1

### 2009 BYU WOMEN'S VOLLEYBALL SCHEDULE

Date	Opponent	Site	Time/Result
Aug. 28-29	Tiger Invitational	Columbia, MO	
Aug. 28	vs. Ole Miss		W (3-0)
Aug. 29	vs. Texas State		W (3-0)
	@ Missouri		L (1-3)
Sept. 1	@ Utah State	Logan, UT	L (2-3)
Sept. 4-5	BYU Nike Classic	PROVO, UT	
Sept. 4	Cal Poly		W (3-2)
Sept. 5	Weber State		W (3-0)
	Kansas State		L (2-3)
Sept. 10-12	Ameritas Players Challenge	Lincoln, NE	
Sept. 10	vs. UCLA		L (1-3)
Sept. 11	@ Nebraska		L (1-3)
Sept. 12	vs. Virginia		L (1-3)
Sept. 17	San Diego State*	PROVO, UT	W (3-2)
Sept. 19	Air Force*	PROVO, UT	W (3-0)
Sept. 25	@ Utah*	SLC, UT	L (2-3)
Sept. 29	North Dakota State	PROVO, UT	W (3-0)
Oct. 3	@ UNLV*	Las Vegas, NVW	(3-0)
Oct. 8	New Mexico*	PROVO, UT	7 p.m.
Oct. 10	TCU*	PROVO, UT	6 p.m.
Oct. 15	@ Colorado State*	Fort Collins, CO	7 p.m.
Oct. 17	@ Wyoming*	Laramie, WY	7 p.m.
Oct. 23	Utah*	PROVO, UT	7 p.m.
Oct. 27	Utah Valley Univ.	PROVO, UT	7 p.m.
Oct. 29	UNLV*	PROVO, UT	7 p.m.
Nov. 5	@ TCU*	Fort Worth, TX	7 p.m.
Nov. 7	@ New Mexico	Albuquerque	1p.m.
Nov. 12	Wyoming*	PROVO, UT	7 p.m.
Nov. 14	Colorado State*	PROVO, UT	7 p.m.
Nov. 19	@ Air Force*	USAFA, CO	7 p.m.
Nov. 21	@ San Diego State*	San Diego, CA	1 p.m.
Nov. 28	@ Saint Mary's	Moraga, CA	7 p.m.
Dec. 4-5	NCAA First/Second Rounds	TBA	
Dec. 11-12	NCAA Regionals	TBA	
Dec. 17-19	NCAA Final Four	Tampa Bay, FL	TBA

\* denotes Mountain West Conference matches.

\*\* all times listed are local to site and subject to change.

[www.byucougars.com](http://www.byucougars.com)

32 National Tournament Berths • 24 Conference Championships • 1,039 Wins and 40 Years of Volleyball Tradition

## 2009 NUMERICAL ROSTER

No.	Name	Pos.	Ht.	Cl.	Exp.	Hometown (Previous School)
1	Morgan Lloyd Sorensen	L/DS	5-4	SR	1L	Pleasant Grove, Utah (Salt Lake CC)
2	Heather Hannemann	S	5-8	FR	HS	Alpine, Utah (Lone Peak HS)
3	Courtney Donaldson	RS	6-0	R-FR	HS	LaVerne, California (Bonita HS)
4	Kathryn LeCheminant	MB	6-2	R-FR	HS	Layton, Utah (Layton HS)
5	Brooke Taulii Soon	S	5-11	SO	RS	Torrance, Calif. (North Torrance HS)
6	Chelsea Goodsell	L	5-2	SO	1L	Laguna Niguel, Calif. (Sacramento State)
7	Christina Measom	MB	6-0	JR	2L	Lehi, Utah (Lehi HS)
8	Marisa Boaz	MB	6-1	SR	3L	Sandy, Utah (Brighton HS)
9	Kiana Rogers	S	5-11	JR	2L	Placerville, Calif. (Union Mine HS)
10	Camilla Phillips	OH	5-11	JR	TR	Jordan, Utah (Salt Lake CC)
11	Melissa Lake Wright	L/DS	5-5	JR	1L	Palm Springs, Calif. (Palm Springs HS)
12	Kayla Walker	RS	6-5	SR	3L	Kaysville, Utah (Pepperdine)
13	Lauren Sagers	RS	6-0	FR	HS	Las Vegas, Nev. (Centennial HS)
14	Christie Carpenter	OH	6-1	SO	1L	Cedar Hills, Utah (Lone Peak HS)
15	Nicole Warner	MB	6-2	FR	RS	Rigby, Idaho (Rigby HS)
16	Stephanie Lau	DS/OH	5-10	SR	2L	Edmonds, Wash. (Kamiak HS)
17	Courtney Honka	L/DS	5-8	FR	HS	Porterville, Calif. (Monache HS)
20	Casey Speredon Thurston	OH	6-1	SO	1L	West Valley City, Utah (Granger HS)

## 2009 ALPHABETIC ROSTER

Name	No.	Pos.
Marisa Boaz	8	MB
Christie Carpenter	14	OH
Courtney Donaldson	3	RS
Chelsea Goodsell	6	L
Heather Hanneman	2	S
Courtney Honka	17	L/DS
Melissa Lake Wright	11	L/DS
Stephanie Lau	16	DS
Kathryn LeCheminant	4	MB
Morgan Lloyd Sorensen	1	L
Christina Measom	7	MB
Camilla Phillips	10	OH
Kiana Rogers	9	S
Lauren Sagers	13	RS
Casey Speredon Thurston	20	OH
Brooke Taulii Soon	5	S
Kayla Walker	12	RS
Nicole Warner	15	MB

Head Coach: Shay Goulding (BYU 1998) – Second Season

Assistant Coaches: Shawn Olmstead; Mike Wilton

Trainer: Gaye Merrill

## ROSTER BREAKDOWN

## Returning Starters (4)

Name	Pos.	Ht.	Cl.	Pct.	KPG	DPG	BPG
Melissa Lake Wright	L/DS	5-5	JR	-.091	0.03	3.56	0.00
Christina Measom	MB	6-0	JR	.154	1.78	0.37	0.65
Kiana Rogers	S	5-11	JR	.201	10.14*	2.45	0.42
Kayla Walker	RS	6-5	SR	.223	3.03	2.10	0.91

\* Assists per game

## Starters Lost (3)

Rachel Dyer	MB	6-1	--	.316	2.32	0.81	1.09
Ashton Hansen Hosford	MB	6-4	--	.261	1.46	0.12	1.29
Bryn Porter	OH	5-10	--	.135	2.87	2.14	0.47

## Returning Letterwinners (8)

Name	Pos.	Ht.	Cl.	Pct.	KPG	DPG	BPG
Marisa Boaz	RS	6-1	SR	-.250	0.00	0.25	1.00
Stephanie Lau	OH/DS	5-10	SR	.250	0.40	0.50	0.00
Melissa Lake Wright	L/DS	5-5	JR	-.091	0.03	3.56	0.00
Morgan Lloyd Sorensen	L/DS	5-4	SR	.500	0.03	2.29	0.00
Christina Measom	MB	6-0	JR	.154	1.78	0.37	0.65
Kiana Rogers	S	5-11	JR	.201	10.14*	2.45	0.42
Casey Speredon Thurston	OH	6-1	SO	.208	1.38	0.08	0.08
Kayla Walker	RS	6-5	SR	.223	3.03	2.10	0.91

\* Assists per game

## Letterwinners Lost (4)

Rachel Dyer	MB	6-1	--	.316	2.32	0.81	1.09
Ashton Hansen Hosford	MB	6-4	--	.261	1.46	0.12	1.29
Malia Marquardt	RS	6-1	--	.217	1.93	1.24	1.05
Bryn Porter	OH	5-10	--	.135	2.87	2.14	0.47

## Redshirts Returning (4)

Name	Pos.	Ht.	Cl.	Pct.	KPG	DPG	BPG
Christie Carpenter*	OH	6-1	SO	.065	1.60	1.30	0.40
Chelsea Goodsell**	L	5-2	SO	--	--	--	--
Brooke Taulii Soon***	S	5-11	SO	--	--	--	--
Nicole Warner	MB	6-2	FR	--	--	--	--

\* Stats are from freshman season

\*\* Played one year at Sac. St. before transferring and redshirting last year

\*\*\* Redshirted in 2007 and served as team manager in 2008

## Others Lost (1)

Name	Pos.	Ht.	Cl.	Pct.	KPG	DPG	BPG
Markelle Malone	S	5-11	FR	--	--	--	--

## Newcomers (6)

Name	Pos.	Ht.	Cl.
Courtney Donaldson	RS	6-0	FR
Heather Hannemann	S	5-8	FR
Courtney Honka	L/DS	5-8	FR
Kathryn LeCheminant	MB	6-2	FR
Camilla Phillips	OH	5-11	JR
Lauren Sagers	RS	6-0	FR

## Class Breakdown

## SENIOR (4)

Marisa Boaz  
Stephanie Lau  
Morgan Lloyd Sorensen  
Kayla Walker

## SOPHOMORE (4)

Christie Carpenter  
Chelsea Goodsell  
Casey Speredon Thurston  
Brooke Taulii Soon

## JUNIOR (4)

Melissa Lake Wright  
Christina Measom  
Kiana Rogers  
Camilla Phillips

## FRESHMAN (6)

Courtney Donaldson  
Heather Hanneman  
Courtney Honka  
Kathryn LeCheminant  
Lauren Sagers  
Nicole Warner

# NEW MEXICO

**GENERAL INFO**

Location: Albuquerque, N.M.  
 Enrollment: 25,820  
 Nickname: Lobos  
 Colors: Cherry and Silver  
 Facility: Johnson Gymnasium (4,000)  
 Conference: Mountain West

**VOLLEYBALL INFO**

Series Record: BYU leads, 61-11  
 Last Meeting: 2008  
 Result: UNM (3-0)  
 Head Coach: Jeff Nelson (Ball State '86)  
 Assistant Coaches: Steve Hendricks, Lisa Beauchene  
 Overall Record (Years): 280-167 (14)  
 Record at School (Years): 38-20 (2)  
 2008 Overall Record: 22-7

2008 Conference Record: 11-5(3rd)  
 2008 Final Ranking/Postseason Finish: N/A

**PLAYER INFO**

Starters Returning/Lost: 4/2 + libero  
 Letterwinners Returning/Lost: 10/4

## 2009 New Mexico State Women's Volleyball Roster

No.	Name	Pos.	Ht.	Cl./Exp.	Hometown / Previous School
2	Lisa Meeter	OH	5-11	Jr./2L	Colorado Springs, Colo./Colo. Springs Christian School
3	Melissa Rohr	L/DS	5-8	Fr./HS	Albuquerque, N.M./Cibola HS
4	Ashley Rhoades	MB	5-11	So./1L	Rio Rancho, N.M./Rio Rancho HS
5	Jordan Russell	S	5-7	Fr./HS	Stanley, N.M./Moriarty HS
6	Rose Morris	OH	6-1	Sr./3L	Albuquerque, N.M./Sandia HS
7	Jade Michaelson	S	6-0	Jr./2L	Tucson, Ariz./Salpointe Catholic HS
8	Allison Buck	LIB	5-7	So./1L	Camas, Wash./Camas HS
9	Allie Suiter	MB	6-2	Sr./3L	Littleton, Colo./Chatfield HS
11	Amy Wong	OH	5-7	So./1L	Litchfield Park, Ariz./Va. Commonwealth Univ.
12	Taylor Hadfield	MB	6-1	Jr./2L	Corte Madera, Calif./Redwood HS
13	Kelly Williamson	OH	6-1	So./1L	Buenos Aires, Argentina/Lincoln International School
14	Anna Lehne	MB	6-1	Sr./3L	Pueblo, Colo./Pueblo County HS
15	Jackie Rodriguez	L/DS	5-7	Fr./HS	Rio Rancho, N.M./Rio Rancho HS
16	Rachel Barber	OH	6-1	Fr./RS	Phoenix, Ariz./Arcadia HS
17	Carli Torr	L/DS	5-6	Fr./HS	Albuquerque, N.M./LaCueva HS

## Last Time Out

ALBUQUERQUE, N.M. --- The University of New Mexico volleyball team won its third Mountain West Conference match in a row with a 3-0 win over the Air Force Academy. Sophomore Ashley Rhoades had a career-high 15 kills and a .619 attack percentage to lead the Lobos. It is the second Saturday in a row that Rhoades has set a career mark in kills. The Rio Rancho native had a then-career high 12 kills at Wyoming a week ago.

New Mexico (11-5, 3-2 MWC) played a strong first set without a single attack error (14K-0E-21A; .667) to win 25-7. UNM took a 6-0 lead, including two Allison Buck service aces, before the Falcons could get on the board.

The second set saw the return of senior Rose Morris to action. Morris has been out since a pinkie injury on Sept. 12 sidelined the senior captain. The Albuquerque native had seven kills in the set with three kills putting the Lobos back in the lead at key moments. The third Morris lead-changer put UNM up 20-19 and three more Morris kills, including the set-winner, gave the Lobos a 25-22 win.

In the third set, Air Force (8-9, 0-5 MWC) stayed with the Lobos until the 20-20 mark. Rhoades put down three consecutive kills, followed by a Morris kill, then another Rhoades kill, her 15th of the match, for a 25-20 win.

In just two sets of action, Morris finished with 11 kills and a .368 attack percentage. UNM's .460 team attack percentage ranks sixth among the UNM single match records. Setter Jade Michaelson had 40 assists and six blocks on the afternoon. Junior Lisa Meeter had a solid all-around day with seven kills, .500 attack percentage, a block and a team-leading eight digs.

UNM will take a three-match road swing over the next 10 days. The trip begins with MWC matches at BYU (Oct. 8) and Utah (Oct. 10). The road swing will wrap up on Tuesday, Oct. 13 at New Mexico State.

COMPARING THE UTES AND COUGARS						
	KPS	%	APS	SAPS	DPS	BPS
UNM	12.5	.225	11.6	1.2	13.6	2.2
BYU	11.8	.195	11.1	0.9	13.1	2.9

# TCU

**GENERAL INFO**

Location: Fort Worth, Texas  
 Enrollment: 8,749  
 Nickname: Horned Frogs  
 Colors: Purple and White  
 Facility: University Rec Center (1,500)  
 Conference: Mountain West

**VOLLEYBALL INFO**

Series record: BYU leads, 12-1  
 Last Meeting: 2007  
 Result: BYU (3-1)  
 Head Coach: Prentice Lewis (Long Beach State '95)  
 Assistant Coaches: Jason Tanaka, Linda Hampton  
 Overall Record (Years): 130-100 (7)

Record at School (Years): Same  
 2008 Overall Record: 20-12  
 2008 Conference Record: 9-7 (T4th)  
 2008 Final Ranking/Postseason Finish: N/A

**PLAYER INFO**

Starters Returning/Lost: 4/2 + libero  
 Letterwinners Returning/Lost: 11/2

## 2009 TCU Women's Volleyball Roster

No.	Name	Pos.	Ht.	Cl./Exp.	Hometown / Previous School
1	Katelyn Blackwood	DS	5-6	Sr. 3L	Houston, Texas Lamar HS
2	Kourtney Edwards	MB	6-2	Sr. 3L	Haltom City, Texas Haltom HS
3	Kylie Pont	RS	5-11	So. 1L	Omaha, Neb. Millard North HS
4	Emily Kirby	MB/RS	6-3	Fr. HS	Sherman, Texas Texoma Christian
5	Kristen Hester	MB	6-1	So. 1L	Fort Worth, Texas Boswell HS
6	Sloane Sunstrum	OH	5-11	Fr. HS	Southlake, Texas Southlake Carroll HS
7	Megan Munce	S/DS	5-8	So. 1L	Newport Beach, Calif. Newport Harbor HS
8	Christy Hudson	RS	6-2	Jr. 2L	Yorba Linda, Calif. Esperanza HS
9	Hannah Fort	MB/RS	6-1	So. 1L	Magnolia, Texas Magnolia HS
10	Irene Hester	OH	6-0	Jr. 2L	Fort Worth, Texas Boswell HS
12	Meghan Horio	DS/S	5-8	Fr. HS	Los Alamitos, Calif. Los Alamitos HS
15	Makenzie Smith	DS	5-10	Fr. HS	Austin, Texas Westwood HS
17	Lauren Otto	OH	5-10	Sr. 3L	Arlington, Texas Arlington HS
23	Sarah Joeckel	OH/DS	5-9	So. 1L	Arlington, Texas Arlington HS
31	Victoria Hernandez	DS	5-3	Sr. 1L	Brownwood, Texas Brownwood HS

## Last Time Out

FORT WORTH, Texas - After falling behind by dropping the first two sets, San Diego State's comeback try was thwarted as TCU recorded a four-set (25-20, 25-11, 20-25, 24-26) victory over the Aztecs Saturday afternoon at the University Recreation Center in Fort Worth, Texas. It was the 10th win the last 11 matches for the Horned Frogs who fought off three SDSU match points in the fourth set.

With the victory, TCU improved to 15-4 overall and 4-1 in the Mountain West Conference. San Diego State, meanwhile, saw its record fall to 6-9 (1-4 MWC).

Andrea Hannasch led the Aztecs with a dozen kills while teammate Lauren Salisbury had 11 as the duo combined for half of the team's kills on the afternoon. Salisbury added six blocks to her line while Hannasch finished with four.

SDSU setter Lauren Van Orden tied her season high with 12 digs and also had 38 assists as she turned in her third double-double of the season.

TCU's Kourtney Edwards led all players with 16 kills and also hit .429 over the four sets. Irene Hester added 10 kills along with 14 digs to record a double-double for the home side.

The Horned Frogs took control of the match in the first set as they opened a 15-10 lead after the teams had been tied at 9-9. From there TCU maintained that advantage en route to the five-point win. The Horned Frogs maintained that momentum in set two as they ran out to a 10-4 lead and went on to the comfortable 14-point set victory to go up 2-0 in the match.

After the break, SDSU began its comeback attempt. This time it was the Aztecs' turn to score five straight points to take control of the set with a 15-10 advantage. Just as TCU did in the first set, San Diego State maintained that lead to win the contest by five.

The fourth set was a heartbreaker for SDSU as they took the lead at 12-11 and built it to four points late at 22-18. The Aztecs would lead 24-21 and have three chances to close out the set, but a kill by Edwards and three consecutive San Diego State hitting errors suddenly gave the Horned Frogs a 25-24 lead. Edwards then secured the match victory with her 16th kill to give TCU the 26-24 win.

San Diego State now returns home for a three-match home stand beginning with a contest against league co-leader Colorado State on Thursday, Oct. 8, at 7:00 p.m. in Peterson Gym.

COMPARING THE UTES AND COUGARS						
	KPS	%	APS	SAPS	DPS	BPS
TCU	12.8	.227	11.8	1.5	15.4	2.5
BYU	11.8	.195	11.1	0.9	13.1	2.9

**2009 QUICK FACTS**

**UNIVERSITY INFORMATION**

Location.....Provo, Utah 84602  
 Elevation.....4,553 feet  
 Enrollment.....33,278 (Daytime)  
 Founded.....October 15, 1875  
 Owned...Church of Jesus Christ of Latter-day Saints  
 Nickname.....Cougars  
 Mascot.....Cosmo  
 Colors.....Dark blue, white and tan  
 Conference.....Mountain West  
 Arena.....Smith Fieldhouse (5,000) wood floor  
 BYU President...Cecil O. Samuelson (Utah, 1970)  
 Athletics Director.....Tom Holmoe (BYU, 1983)

**VOLLEYBALL INFORMATION**

Head Coach.....Shay Goulding (BYU, 1998)  
 Office Phone.....801-422-3387  
 Assistant Coaches.....Shawn Olmstead  
 .....Mike Wilton  
 .....Chris McGown  
 Goulding Record at BYU:.....22-19  
 Goulding Career Record.....Same  
 BYU's All-Time Record:.....1,039-301-5 (.777)  
 2008 Record.....14-12  
 2008 MWC Record.....7-9 (6th)  
 2008 NCAA.....None  
 2008 Final Ranking.....N/A  
 Starters Returning/Lost.....4/3  
 Letterwinners Returning/Lost.....8/4  
 Other Players Returning/Lost.....4\*/1  
 Newcomers.....6  
 \* Brooke Tualii Soon redshirted in 2007 before serving as the team manager last season

**ATHLETIC COMMUNICATIONS**

Primary Volleyball Contact.....Jackie Johnson  
 Phone.....801-422-8999  
 Cell.....520-227-7720  
 E-mail.....wvolleyball\_sid@byu.edu  
 Secondary Volleyball Contact.....Kyle Chilton  
 Phone.....801-422-4909  
 E-mail.....kyle\_chilton@byu.edu  
 Homepage.....www.byucougars.com  
 Pressrow Phone.....801-422-0358  
 Mailing Address...BYU Athletic Communications  
 30 Smith Fieldhouse  
 Provo, Utah 84602



**Weekly Notes:**

**Back-to-Back 3-0 Cougar Wins**

BYU hosted North Dakota State on Sept. 29 to break the seven-game Bison win streak in three sets. Kayla Walker recorded her fifth double-double with 16 kills and 13 digs. Kiana Rogers also had a double-double, racking up 38 assists and 16 digs, a season-high. Warner finished with a career-high .625 hitting percentage on her way to 11 kills and five blocks. The Cougars also defeated conference foe, UNLV in Las Vegas Saturday, beating the Rebels in three quick sets. Walker led the Cougars with 14 kills, nine digs and seven blocks – including two solo blocks on the afternoon. Christina Measom, Christie Carpenter and Camilla Phillips each added six kills while Nicole Warner had five. Setter Kiana Rogers had 30 assists and nine digs while Morgan Lloyd Sorensen had 10 digs.

**Cougars Battle Utes, Fall in Five**

At the Crimson Court on the campus of the University of Utah in front of a record-high 1,747 fans, the Utes crept by the Cougars in five. Senior rightside hitter Kayla Walker came out with 19 kills and 11 digs on the night, her fourth double-double of the season. Camilla Phillips had a career-high eight kills while Kiana Rogers posted 41 assists. Morgan Lloyd Sorensen held up the back row with 21 digs as Christina Measom had a career-high 11 blocks, the highest for any Cougar this season.

**Walker Named MWC Player of the Week Sept. 21**

Kayla Walker's presence was invaluable to the Cougars against SDSU and Air Force, leading the Cougars in kills both games. She tallied a career-high 32 kills against SDSU while maintaining a .500 hitting percentage. She took a total of 58 swings and only had three errors. Her 32 kills is the third-highest total in MWC league-match history. Even against Air Force she posted 10 kills while being on the sideline for most of set two. The Cougars were tied up in set two with many subs in for the starters. Walker subbed in for the last two points – scoring the final points of the set. The match against SDSU marked her third double-double of the 2009 season.

**BYU Opens MWC Conference Play 2-0**

Led by senior Kayla Walker tallying 42 kills in two games (32 against SDSU and 10 against Air Force), the Cougars beat out both teams at the Smith Fieldhouse to open the MWC season 2-0, the first 2-0 conference start since 2006.

**Ameritas Players Challenge**

The Cougars lost to No. 8 UCLA, No. 5 Nebraska and Virginia in the Ameritas Players Challenge last week, all in four sets. Kayla Walker led the Cougars in kills, being the only Cougar named to the All-Tournament team. She tallied 17 kills against Virginia, 14 kills against Nebraska and 15 against UCLA. Some of the bright spots in the tournament included the team's hitting percentage of .680 in the first set against No. 5 Nebraska. Also in the UCLA match the team posted 16 team blocks to the Bruins' six.

**BYU Places Second in Nike Classic**

BYU downed Weber State in three in the second match of the Nike Classic, but brought Cal Poly and Kansas State to five sets, dropping one to Kansas State – the winner of the tournament. Despite a second-place finish in the Nike Classic, two Cougars, Kayla Walker and Christie Carpenter, were named to the all-tournament team.

**Walker Finds Career Highs at Utah State**

Traveling to in-state-rival Utah State, the Cougars fell to the Aggies in five sets on Tuesday, Sept. 1 in front of 1,557 USU fans. Despite the loss, senior rightside hitter, Kayla Walker, posted a season- and career-high 25 kills in addition to nine digs. She hit at .288 percent. Christina Measom added 13 kills hitting at an impressive .440, also putting up three blocks. Christie Carpenter tallied 11 kills, two assists, one dig and two blocks. Nicole Warner also filled up the stat sheet, leading the team with five blocks, two service aces and also adding six kills on the night. Senior setter Kiana Rogers had 54 of 58 assists in the match, also adding three kills and eight digs. Morgan Lloyd Sorensen topped the dig list with 11, with one service ace.

**Geographic Breakdown**

<b>CALIFORNIA (6)</b>	<b>UTAH (9)</b>
Courtney Donaldson	Marisa Boaz
Chelsea Goodsell	Christie Carpenter
Courtney Honka	Heather Hanneman
Melissa Lake Wright	Kathryn LeCheminant
Kiana Rogers	Morgan Lloyd Sorensen
Brooke Tualii Soon	Christina Measom
	Camilla Phillips
	Casey Spredon Thurston
	Kayla Walker
<b>IDAHO (1)</b>	
Nicole Warner	
	<b>WASHINGTON (1)</b>
	Stephanie Lau
<b>NEVADA (1)</b>	
Lauren Sagers	

**2009 QUICK FACTS**

**UNIVERSITY INFORMATION**

Location.....Provo, Utah 84602  
 Elevation.....4,553 feet  
 Enrollment.....33,278 (Daytime)  
 Founded.....October 15, 1875  
 Owned...Church of Jesus Christ of Latter-day Saints  
 Nickname.....Cougars  
 Mascot.....Cosmo  
 Colors.....Dark blue, white and tan  
 Conference.....Mountain West  
 Arena.....Smith Fieldhouse (5,000) wood floor  
 BYU President...Cecil O. Samuelson (Utah, 1970)  
 Athletics Director.....Tom Holmoe (BYU, 1983)

**VOLLEYBALL INFORMATION**

Head Coach.....Shay Goulding (BYU, 1998)  
 Office Phone.....801-422-3387  
 Assistant Coaches.....Shawn Olmstead  
 .....Mike Wilton  
 .....Chris McGown  
 Goulding Record at BYU:.....22-19  
 Goulding Career Record.....Same  
 BYU's All-Time Record:.....1,039-301-5 (.777)  
 2008 Record.....14-12  
 2008 MWC Record.....7-9 (6th)  
 2008 NCAA.....None  
 2008 Final Ranking.....N/A  
 Starters Returning/Lost.....4/3  
 Letterwinners Returning/Lost.....8/4  
 Other Players Returning/Lost.....4\*/1  
 Newcomers.....6  
 \* Brooke Tualii Soon redshirted in 2007 before  
 serving as the team manager last season

**ATHLETIC COMMUNICATIONS**

Primary Volleyball Contact.....Jackie Johnson  
 Phone.....801-422-8999  
 Cell.....520-227-7720  
 E-mail.....wvolleyball\_sid@byu.edu  
 Secondary Volleyball Contact.....Kyle Chilton  
 Phone.....801-422-4909  
 E-mail.....kyle\_chilton@byu.edu  
 Homepage.....www.byucougars.com  
 Pressrow Phone.....801-422-0358  
 Mailing Address...BYU Athletic Communications  
 30 Smith Fieldhouse  
 Provo, Utah 84602



**Weekly Notes Cont...**

**BYU Second at the Tiger Invitational**

The Cougars finished second in their season opener in Missouri, finishing off Ole Miss and Texas State in three sets and falling to host Missouri in four. Senior rightside hitter, Kayla Walker and junior middle blocker Christina Measom both earned all-tournament honors. Walker averaged 3.70 kills and 1.9 digs per set while Measom tallied 1.90 kills and 0.90 blocks while hitting .350.

**Cougars Picked To Finish Fourth In MWC**

A voting panel including the nine Mountain West Conference head coaches and selected media has picked the BYU women's volleyball team to finish fourth in the MWC this season with a total of 96 points and two first-place votes. Defending league-champion Utah was tabbed as the favorite to win the 2009 regular-season title while Colorado State was selected a close second and New Mexico was slotted just above BYU in third.

**Transfer Players**

With Shay Goulding at the helm of the program, four players decided to put on a Cougar uniform. Morgan Lloyd Sorensen and Camilla Phillips transferred from Salt Lake Community College while Chelsea Goodsell joins us from Sacramento State and Kayla Walker from Pepperdine. Goodsell and Phillips joined the Cougars this season.

**Preseason All-MWC**

Senior rightside hitter Kayla Walker was named to the Preseason All-MWC Team representing the Cougars. "Without a doubt, Kayla will be the athlete to watch this year in the Mountain West Conference," said Goulding. "She was a tremendous addition to our team last season, and I know she's only going to get better this year."

**The Nation's Best ...**

The Cougars' 1,039-301-5 all-time record entering the week makes them one of the best teams in the nation.

**Here Comes The Bride**

Four Cougars are sporting different last names this season after getting married in the offseason. Junior libero Melissa Lake Wright, senior libero Morgan Lloyd Sorensen, sophomore outside hitter Casey Speredon Thurston and Brooke Tualii Soon all tied the knot this past summer.

**Double-Digit Kills:**

Player	Total	Streak	High
Kayla Walker	14	9	32
Christina Measom	6	0	14
Nicole Warner	2	0	12
Christie Carpenter	1	0	11
Casey S. Thurston	1	0	13

**20+ Kills:**

Kayla Walker (3)  
*at Utah State (9/1) - 25*  
*Cal Poly (9/4) - 22*  
*San Diego St. (9/17) - 32*

**30+ Kills:**

Kayla Walker (1)  
*San Diego St. (9/17) - 32*

**Double-Digit Digs:**

Player	Total	Streak	High
Morgan L. Sorensen	11	0	24
Melissa Lake Wright	7	0	18
Kiana Rogers	6	0	16
Kayla Walker	5	0	17
Chelsea Goodsell	3	0	18

**20+ Digs:**

Morgan Lloyd Sorensen (4)  
*Kansas State (9/5) - 24*  
*vs Virginia (9/12) - 21*  
*San Diego St. (9/17) - 22*  
*at Utah (9/25) - 21*

**Double-Digit Blocks:**

Player	Total	Streak	High
Christina Measom	1	0	11

**Double-Doubles:**

Kiana Rogers (5)  
*vs Texas State (8/29) - 30 A and 12 D*  
*Kansas State (9/5) - 48 A and 10 D*  
*at Nebraska (9/11) - 39 A and 10 D*  
*vs Virginia (9/12) - 41 A and 11 D*  
*San Diego St. (9/17) - 55 A and 11 D*

Kayla Walker (5)  
*vs Texas State (8/29) - 13 K and 11 D*  
*Kansas State (9/5) - 14 K and 17 D*  
*San Diego St. (9/17) - 32 K and 12 D*  
*at Utah (9/25) - 19 K and 11 D*  
*North Dakota State (9/29) - 16 K and 13 D*

**COUGARS PREPARE FOR 2009**

Continuing its tradition of competitive scheduling, BYU will play seven teams that qualified for the 2008 NCAA Tournament, including five that were ranked in the final CSTV/AVCA Top 25 Poll.

"We have worked extremely hard in the off-season and will start well ahead of where we were last year at this time," said Goulding. "Our preconference schedule is challenging, but we are excited for the high level of competition. I expect that it will season our young squad early, prepare us well for a successful Mountain West campaign and put us in a good position for postseason play. I anticipate a great year for Cougar volleyball."

In addition to a full slate of Mountain West Conference action, the Cougars will play in three pre-season tournaments. BYU will open the year at a tournament hosted by the University of Missouri and will face the Tigers, Ole Miss and Texas State, as well as traveling to Utah State on Sept. 1 before returning to the Smith Fieldhouse for its own annual event on Sept. 4 and 5. This year's Nike Classic will feature in-state rival Weber State, Cal Poly and 2008 NCAA Tournament-qualifier Kansas State, who finished last season ranked No. 20. The Cougars will then travel to women's volleyball haven Lincoln, Neb., to compete in a tournament hosted by the Cornhuskers. In a power-packed weekend, the Cougars will take on perennial powerhouse UCLA and host Nebraska as well as Virginia in what will be the first meeting between the two squads. The Bruins finished the 2008 campaign ranked No. 8 nationally after advancing to the Regional Semifinals of the NCAA Tournament while the Cornhuskers reached the Final Four and were ranked No. 3 in the nation to end the year. After starting the 16-match Mountain West Conference schedule on Sept. 17, BYU will step out of league play on Sept. 29 for a match against North Dakota State, winner of the Summit League last year and Utah Valley University in Provo on Oct. 27 amidst a competitive MWC slate and then complete the regular season on Nov. 28 at St. Mary's, another 2008 NCAA Tournament qualifier. BYU has a winning record against 16 of its 2009 opponents with first meetings against Texas State, Virginia and North Dakota State set for this season. The Cougars' all-time record versus this year's competition is a dominating 461-132-2 (.776).

BYU has a winning record against 16 of its 2009 opponents with first meetings against Texas State, Virginia and North Dakota State set for this season. The Cougars' all-time record versus this year's competition is a dominating 461-132-2 (.776).

**2009 SEASON OUTLOOK**

With 40 years of storied volleyball tradition providing the background, the 2009 BYU women's volleyball team looks to challenge for the Mountain West Conference title in 2009 and return to the NCAA Tournament for the 25th time in Cougar history. After experiencing a year of transition with a new coaching staff, the Cougars are ready for a challenging and rewarding 2009 campaign.

"I love the direction that BYU volleyball is going," said Cougar head coach Shay Goulding. "We have some great athletes returning, and with the addition of several key newcomers the future looks extremely bright. Without a doubt, we will be back on track to the winning traditions established here at BYU."

With four starters among eight letterwinners returning, BYU will have talent and experience to draw on throughout the year as the Cougars overcome the challenge of losing three starters, including the standout middle-blocking duo of Rachel Dyer and Ashton Hansen Hosford. Returning All-Mountain West Conference honoree Kayla Walker is back for her senior season after making a tremendous impact last year for BYU. The Pepperdine transfer began the season on the outside but finished on the rightside with fantastic success, which she plans to continue this year. A trio of juniors also returns from last year's starting line-up in Melissa Lake Wright, Christina Measom and Kiana Rogers. Lake Wright earned the starting libero spot midway through the season and finished fifth in the league in digs. Measom also earned her starting opportunity halfway through the year and made her presence felt on the outside. She may also be asked to contribute in the middle in 2009. Rogers rounds out the returning starters for BYU as she prepares for her third season as the Cougar setter.

Several other returning players will be looking to make their mark this year starting with senior Morgan Lloyd Sorensen, who played in every match in 2008 as a libero and defensive specialist after joining the team from Salt Lake Community College. Fellow senior Stephanie Lau could also contribute as an outside hitter or defensive specialist. Senior Marisa Boaz will be competing for playing time in the middle while sophomore Casey Speredon came on strong at the end of last season on the outside and could immediately contribute again this year. In addition to the experience BYU's eight returning letterwinners bring, the Cougars will also benefit from three sophomore redshirts who are no strangers to the court. Christie Carpenter took a redshirt last year after playing in 10 sets on the outside as a true freshman in 2007 and has improved tremendously. Chelsea Goodsell also redshirted last year after transferring from Sacramento State, where she played in every match as a freshman libero. The Cougars will also be welcoming Brooke Taulii Soon back to the court this season as a sophomore after she redshirted in 2007 and served as the team manager last year. Redshirt freshman middle blocker Nicole Warner will also be competing for time after gaining valuable experience last year.

Six new faces will contribute to the Cougars' success this year both on and off the court as BYU welcomes one transfer and four freshmen for the 2009 season. Junior outside hitter Camilla Phillips was named an NJCAA All-American last season out of Salt Lake Community College, where she played under Goulding as a freshman. The All-Region 18 First Team honoree averaged 3.07 kills per set with 67 blocks in 2008. Two Utah products, setter Heather Hanneman (Alpine) and middle blocker Kathryn LeCheminant (Bountiful), will join the Cougars this season as freshmen along with rightside hitter Lauren Sagers out of Las Vegas, Nev., libero/defensive specialist Courtney Honka from Porterville, Calif. and rightside hitter Courtney Donaldson from LaVerne, Calif. All six newcomers could contribute significantly for the Cougars this year.

A breakdown by position follows.

### MIDDLE BLOCKER

Led by Academic All-MWC junior, Christina Measom, the Cougars will post a strong attack in the middle. Measom played in 18 matches and 51 sets for the Cougars in 2008. She began hitting on the rightside and moved to the outside near the end of the year, but will be playing middle for the Cougars this season. Measom finished the year with 91 kills, two assists, 19 digs and 33 blocks on .154 hitting, averaging 1.78 kills and 0.65 blocks per set.

Measom will be joined in the middle by Senior Marisa Boaz who posted a season-high four blocks against Wyoming in the final match of the 2008 season. Freshman Nicole Warner who hit .543 while averaging 1.3 blocks per game in 2007 for the Idaho Falls Juniors club will provide depth to the middle. While in high school she was named to first-team All-State as a senior in 2007 after posting 332 kills and 197 blocks. Freshman Kathryn LeCheminant will also add depth to the middle, who helped her team finish 38th at the Junior Olympics in 2008. LeCheminant brings a career-high 25 kills, eight blocks and five service aces to the Cougar roster.

### OUTSIDE HITTER

Casey Speredon Thurston and Christie Carpenter are both touching 10-foot-4 and will look to be the leading outside hitters for the Cougars in 2009. Thurston saw action in 11 matches and 13 sets as a redshirt freshman in 2008, totaling 18 kills, one dig and one block on the year. Carpenter played in three matches and 10 sets as a freshman in 2007, tallying 16 kills, two aces, 13 digs and four blocks.

Senior Stephanie Lau will provide collegiate experience to the outside as well as serving as a defensive specialist. In 2008 she totaled four kills, one ace and five digs while hitting .250 on the year. Salt Lake Community College transfer, Camilla Phillips, played her freshman year under BYU head coach Shay Goulding and was named 2008 NJCAA honorable mention All-American. She totaled 374 kills (3.07/set) on .288 hitting with 67 blocks as a sophomore at SLCC.

### RIGHTSIDE

A 2008 All-MWC selection and 2009 All-MWC preseason pick, Kayla Walker, will lead the Cougars in the attack from the right side. After transferring from Pepperdine in 2008, Walker played in every match and all but one set in her first season with the Cougars. Although she started 2008 on the outside, she hit on the rightside in the last 10 matches, finding her niche in BYU volleyball. Walker finished the 2008 season with 285 kills, 10 assists, 13 aces, 197 digs and 86 blocks. She ranked first on the team and sixth in the MWC with 3.03 kills per set. She also ranked fifth in the league in points per set (3.64). Walker led the Cougars in kills 13 times, hitting percentage three times, digs once and blocks six times on the 2008 season.

Newcomer, Lauren Sagers will also provide depth to the rightside being a four-time letterwinner at Centennial High School in Las Vegas, Nev. She was named region MVP and all-region first-team as well as team MVP.

### SETTER

Junior Kiana Rogers played in every match and every set for BYU as the starting setter in her sophomore season. She averages 10.14 assists per set, ranking third in the MWC. She finished the 2008 season with 20 aces, .21 per contest. Rogers tallied a team-best 10 double-doubles while posting double-digit digs in 10 matches on the year.

Freshman Heather Hannemann will challenge Rogers for the starting position at setter. She earned prepvolleyball.com All-America honors and first-team all-state as a senior in high school. She was also named 2008 Deseret News 5A state MVP and Provo Daily Herald Utah Valley Player of the Year. Hannemann averaged 0.47 service aces, 1.86 digs and 9.36 assists per set as a senior at Lone Peak High School. After serving as the team manager in 2008, Brooke Taulii Soon will serve as a backup setter for the Cougars. As a senior in high school she earned first-team all-league recognition in 2006 while totaling 246 kills, 21 assists, 56 aces, 420 digs and 31 blocks on .300 hitting.

### LIBERO

Senior Morgan Lloyd Sorensen who played in every match and set in her first season with the Cougars will serve in the capacity of libero. In 2008 she tallied three kills, 29 assists, 24 aces and 218 digs, leading BYU and tied for fourth in the MWC with 0.25 aces per set. Sorensen was third on the team in digs per set with 2.29 and tallied double-digit digs in 10 matches. Melissa Lake Wright will join her with 21 match and 71 set-experience as a walk-on sophomore in 2008. She began last season as a defensive specialist but became the starting libero midway through the season. Wright finished the season with a team-best 253 digs along with two kills, 16 assists and eight aces. She led the team and ranked fifth in the MWC with 3.56 digs per set.

Sacramento State University transfer, Chelsea Goodsell, helped her team compile a 29-8 overall record while winning the Big Sky Conference Championship and advancing to the second round of the NCAA Tournament before losing to eventual national runner-up Stanford. She played in every match for the Hornets as a freshman, ranking second on the team with 4.37 digs per game. Goodsell also recorded double-digit digs in 31 matches on the year, topping the 20-dig mark nine times. Freshman Courtney Honka will also defend for the Cougars. She was named league MVP as a senior at Monache High School and played for varsity all four years.





## Shay Goulding Head Women's Volleyball Coach

Shay Goulding enters her second season in 2009 as the head coach of the BYU women's volleyball program after starting out on Feb. 27, 2008.

### COACHING CAREER

Goulding has 10 years of collegiate coaching experience, including five seasons as the head coach at SLCC where she cultivated the Bruins into one of the elite junior college programs in the country. A four-time NJCAA District I Coach of the Year and two-time American Volleyball Coaches Association West Region Coach of the Year, Goulding guided her SLCC teams to four NJCAA Tournament berths, placing as high as second. Her teams have earned a top-10 NJCAA ranking in each of the last four seasons.

Goulding's 2007 team earned a 44-2 record while finishing third at the NJCAA National Tournament with both losses coming against eventual national champion Western Nebraska. Goulding was honored with her second AVCA West Region Coach of the Year award and fourth District I honor and graduated her fifth All-American. The Bruins made their third consecutive national tournament appearance in 2006 while Goulding garnered her third District Coach of the Year accolade and graduated her third NJCAA All-American. After placing third in the Scenic West Athletic Conference, Goulding led the Bruins to the Region 18 Championship and a bid to the NJCAA Tournament, where the team finished in 11th place.

The 2005 Bruins also finished third in the SWAC and rallied to win the region and district championships. The Bruins ended the year ninth nationally after Goulding received her second District Coach of the Year award. In 2004, she guided the Bruins to a second-place finish at the NJCAA Tournament, producing her first two All-Americans in just her second season as head coach. As a result, she was named the District I and AVCA West Region Coach of the Year.

Prior to coaching at SLCC, Goulding spent one year at Solano Community College in Fairfield, Calif., and three years as part of the coaching staff at Utah State University. During her time as an assistant coach at USU, the Aggies went to the NCAA Tournament twice and were ranked in the top 25 in the country for two consecutive years. The Aggies' climb to the top included back-to-back 20-win seasons and 10 Big West All-Conference selections.

Goulding's coaching experience also includes coaching at the high school and club levels in both California and Utah for the past 10 years. Goulding has directed and coached at camps throughout the western states and has become known as a sound clinician and excellent teacher of motor skills. She was a featured speaker at the 2007 AVCA convention and has served as the Chairman of the AVCA Awards Committee since 2004.

### PLAYING CAREER

Goulding played collegiate volleyball at Coastal Carolina University in South Carolina. A middle blocker/outside hitter, she was named team captain and the Chanticleers Most Valuable Player in 1994 while being selected to several all-tournament teams.

### PERSONAL

A native of Visalia, Calif., Goulding received her Master of Education degree in Exercise Science with an emphasis in Motor Learning from Utah State University in 2001 and her Bachelor of Arts degree in History from BYU in 1998. She served a mission for The Church of Jesus Christ of Latter-day Saints to Santiago, Chile, from 1996-97.



### GOULDING YEAR-BY-YEAR

2008 – Head Coach at BYU – 14-12  
 2007 – Head Coach at Salt Lake Community College – 44-2  
 2006 – Head Coach at Salt Lake Community College – 29-17  
 2005 – Head Coach at Salt Lake Community College – 34-14  
 2004 – Head Coach at Salt Lake Community College – 38-6  
 2003 – Head Coach at Salt Lake Community College – 24-21  
 2002 – Head Coach at Solano Community College – 19-13  
 2001 – Assistant Coach at Utah State – 20-11  
 2000 – Assistant Coach at Utah State – 22-10  
 1999 – Assistant Coach at Utah State – 14-12

### GOULDING COACHING LEDGER

#### Head Coach

Year	School	Over.	Conf./Finish	National Finish
2008	BYU	14-12	7-9/6th	--
2007	SLCC	44-2	10-0/1st	3rd at NJCAA
2006	SLCC	29-17	7-5/3rd	11th at NJCAA
2005	SLCC	34-14	5-5/3rd	9th at NJCAA
2004	SLCC	38-6	9-1/1st	2nd at NJCAA
2003	SLCC	24-21	8-4/2nd	--
2002	SCC	19-13		

**Kayla Walker • 6-5 • Rightside Hitter • Senior • Kaysville, UT**

2008 – Junior: Played in every match and all but one set in her first season with the Cougars after transferring from Pepperdine ... began the year as an outside hitter but hit on the right-side in the last 10 matches ... named All-Mountain West Conference in just her first year in the league ... finished the year with 285 kills, 10 assists, 13 aces, 197 digs and 86 blocks ... was first on the team and sixth in the MWC with 3.03 kills per set ... also ranked fifth in the league in points per set (3.64) ... was third and fourth, respectively, in those categories in MWC play ... also ranked fifth on the team with 2.10 digs per set and fourth for the Cougars with 0.91 blocks per set ... tallied seven double-doubles on the year while posting double-digit kills in a team-high 17 matches and double-digit digs in nine contests ... was the only Cougar to tally at least 20 kills in a match, which she did twice ... led the team in kills 13 times, hitting percentage three times, digs once and blocks six times ... recorded a season-high 15 digs vs. Missouri ... earned Texas A&M Invitational All-Tournament honors after leading the Cougars in kills and hitting percentage on the weekend ... posted 18 kills vs. American while hitting a season-high .438 ... tallied her first double-double of the season with 13 kills and 10 digs against Boise State ... had 13 kills and 10 digs against then-No. 14 Wisconsin ... notched her third double-double with 13 kills and 14 digs against San Diego State ... had 16 kills and 11 digs against TCU ... tallied a career-high 21 kills with 11 digs at UNLV for her fifth double-double ... posted her sixth double-double with 20 kills and 14 digs at No. 23 Utah ... finished the season with 10 kills and 12 digs against Wyoming ... posted double-digit kills in the final five matches ... improved her season averages to 3.51 kps, 2.32 dps and 1.14 bps after moving to the rightside ... named Academic All-MWC.

Season Averages	
Sets played:	59
Kills per set:	4.14
Assists per set:	0.07
Service aces per set:	0.07
Digs per set:	2.05
Blocks per set:	0.81



KAYLA WALKER – 2009 Match-by-Match																			
Date	Opponent	ATTACK					Pct	SET			PASS				BLOCK			GEN	
		SP	K	E	TA	Pct		A	SA	SE	RE	DIG	BS	BA	BE	Total	BHE		
Aug 28, 2009	vs Ole Miss	3	13	5	38	.211	0	1	1	0	0	0	0	0	0	0	0	0.0	0
Aug 29, 2009	vs Texas State	3	13	1	31	.387	0	0	1	0	11	0	2	0	2.0	0			
Aug 29, 2009	at Missouri	4	11	8	38	.079	0	0	1	1	8	0	3	0	3.0	0			
Sep 01, 2009	at Utah State	5	25	10	52	.288	0	0	0	0	9	0	2	0	2.0	0			
Sep 04, 2009	Cal Poly	5	22	6	51	.314	0	0	0	7	1	7	0	8.0	0				
Sep 05, 2009	Weber State	3	9	3	20	.300	0	0	0	1	3	0	1	0	1.0	0			
Sep 05, 2009	No. 23 Kansas St.	5	14	8	64	.094	2	1	1	3	17	0	4	2	4.0	0			
Sep 10, 2009	vs No. 8 UCLA	4	15	8	51	.137	0	1	1	1	4	0	5	0	5.0	0			
Sep 11, 2009	at No. 5 Nebraska	4	14	9	43	.116	1	0	0	1	6	0	4	0	4.0	0			
Sep 12, 2009	vs Virginia	4	17	7	48	.208	0	0	1	0	9	0	0	1	0.0	0			
Sep 17, 2009	SDSU	5	32	3	58	.500	0	1	1	1	12	0	2	1	2.0	0			
Sep 19, 2009	Air Force	3	10	4	17	.353	0	0	0	0	2	0	3	0	3.0	0			
Sep 25, 2009	at Utah	5	19	13	58	.103	1	0	0	1	11	1	4	0	5.0	0			
Sep 29, 2009	NDSU BISON	3	16	6	39	.256	0	0	2	1	13	0	2	0	2.0	0			
Oct 3, 2009	at UNLV	3	14	5	39	.231	0	0	1	0	9	2	5	0	7.0	0			
Oct 8, 2009	New Mexico																		
Oct 10, 2009	TCU																		
Oct 15, 2009	at Colorado St.																		
Oct 17, 2009	at Wyoming																		
Oct 23, 2009	Utah																		
Oct 27, 2009	Utah Valley																		
Oct 29, 2009	UNLV																		
Nov 5, 2009	at TCU																		
Nov 7, 2009	at New Mexico																		
Nov 12, 2009	Wyoming																		
Nov 14, 2009	Colorado St.																		
Nov 19, 2009	at Air Force																		
Nov 21, 2009	at SDSU																		
Nov 28, 2009	at St. Mary's																		
<b>Totals</b>		<b>59</b>	<b>244</b>	<b>96</b>	<b>647</b>	<b>.229</b>	<b>4</b>	<b>4</b>	<b>10</b>	<b>10</b>	<b>121</b>	<b>4</b>	<b>44</b>	<b>4</b>	<b>48.0</b>	<b>0</b>			

**Season and Career Highs**

- Kills**  
Season: 32 vs. SDSU, 9/17/09  
Career: 32 vs. SDSU, 9/17/09
- Hitting Percentage**  
Season: .500 vs. SDSU, 9/17/09  
Career: .500 vs. SDSU, 9/17/09
- Assists**  
Season: 2 vs. No. 23 Kansas St, 9/5/09  
Career: 3 vs. American, 9/6/08
- Digs**  
Season: 17 vs. No. 23 Kansas St., 9/5/09  
Career: 17 vs. No. 23 Kansas St., 9/5/09
- Blocks**  
Season: 7 (twice)  
Career: 8 (twice)
- Aces**  
Season: 1 (three times)  
Career: 1 (16 times)

Morgan Lloyd Sorensen • 5-4 • Libero/DS • Senior • Pleasant Grove, UT

2008 – Junior: Played in every match and set in her first season with the Cougars after transferring from Salt Lake Community College ... tallied three kills, 29 assists, 24 aces and 218 digs ... led BYU and was tied for fourth in the Mountain West Conference with 0.25 aces per set ... was third on the team in digs per set at 2.29 ... tallied double-digit digs in 10 matches and led the team in digs eight times, helping the Cougars go 6-2 in those matches ... started at the libero position for the first half of the season and finished the year as the defensive specialist ... began her Cougar career averaging 3.67 digs and 0.50 aces per set in the BYU Molten Classic ... notched a match-high 14 digs in the season-opener against Utah State ... before tallying her first kill of the year against Tulane to go along with 11 digs ... posted season highs of four aces and 19 digs against Missouri to help the Cougars secure the tournament title ... improved her defensive play the next weekend to average 4.08 dps at the Texas A&M Invitational with 16 digs against both Siena and American and 17 against the host Aggies ... began the InnTowner Invitational with three aces and 18 digs against Boise State ... also posted double-digit digs at then-No. 14 Wisconsin (12), at Wyoming (13) and against Utah (12) ... tallied three aces at Wyoming and at UNLV ... named Academic All-MWC.

Season Averages	
Sets played:	59
Kills per set:	0.02
Assists per set:	0.31
Service aces per set:	0.12
Digs per set:	3.25



MORGAN LLOYD SORENSEN – 2009 Match-by-Match																	
Date	Opponent	ATTACK				Pct	SET		SERVE		PASS		BLOCK			GEN	
		SP	K	E	TA		A	SA	SE	RE	DIG	BS	BA	BE	Total	BHE	
Aug 28, 2009	vs Ole Miss	3	1	0	2	.500	1	0	1	0	11	0	0	0	0.0	0	
Aug 29, 2009	vs Texas State	3	0	0	0	.000	0	1	2	0	8	0	0	0	0.0	0	
Aug 29, 2009	at Missouri	4	0	1	1	-1.000	0	0	0	3	19	0	0	0	0.0	0	
Sep 01, 2009	at Utah State	5	0	0	1	.000	1	1	1	4	11	0	0	0	0.0	0	
Sep 04, 2009	Cal Poly	5	0	0	0	.000	4	2	1	2	11	0	0	0	0.0	0	
Sep 05, 2009	Weber State	3	0	0	0	.000	2	1	1	0	1	0	0	0	0.0	1	
Sep 05, 2009	No. 23 Kansas St.	5	0	0	0	.000	1	0	1	4	24	0	0	0	0.0	0	
Sep 10, 2009	vs No. 8 UCLA	4	0	1	2	-.500	0	0	1	1	11	0	0	0	0.0	0	
Sep 11, 2009	at No. 5 Nebraska	4	0	0	3	.000	0	1	1	3	3	0	0	0	0.0	0	
Sep 12, 2009	vs Virginia	4	0	1	3	-.333	2	0	1	1	21	0	0	0	0.0	0	
Sep 17, 2009	SDSU	5	0	0	1	.000	0	1	2	2	22	0	0	0	0.0	0	
Sep 19, 2009	Air Force	3	0	0	0	.000	1	0	5	0	11	0	0	0	0.0	0	
Sep 25, 2009	at Utah	5	0	0	1	.000	1	0	2	2	21	0	0	0	0.0	0	
Sep 29, 2009	NDSU BISON	3	0	0	0	.000	2	0	1	0	8	0	0	0	0.0	0	
Oct 03, 2009	at UNLV	3	0	1	1	-1.000	3	0	2	0	10	0	0	0	0.0	0	
Oct 8, 2009	New Mexico																
Oct 10, 2009	TCU																
Oct 15, 2009	at Colorado St.																
Oct 17, 2009	at Wyoming																
Oct 23, 2009	Utah																
Oct 27, 2009	Utah Valley																
Oct 29, 2009	UNLV																
Nov 5, 2009	at TCU																
Nov 7, 2009	at New Mexico																
Nov 12, 2009	Wyoming																
Nov 14, 2009	Colorado St.																
Nov 19, 2009	at Air Force																
Nov 21, 2009	at SDSU																
Nov 28, 2009	at St. Mary's																
<b>Totals</b>		<b>59</b>	<b>1</b>	<b>4</b>	<b>15</b>	<b>-.200</b>	<b>18</b>	<b>7</b>	<b>22</b>	<b>22</b>	<b>192</b>	<b>0</b>	<b>0</b>	<b>0</b>	<b>0.0</b>	<b>1</b>	

Season and Career Highs

- Kills**  
Season: 1 (three times)  
Career: 1 (five times)
- Hitting Percentage**  
Season: .500 at Ole Miss, 8/28/09  
Career: 1.000 (twice)
- Assists**  
Season: 4 vs Cal Poly, 9/4/09  
Career: 4 vs Cal Poly, 9/4/09
- Digs**  
Season: 24 vs. No. 23 Kansas St., 9/5/09  
Career: 24 vs. No. 23 Kansas St., 9/5/09
- Aces**  
Season: 2 vs. Cal Poly, 9/4/09  
Career: 4 vs. Missouri, 8/30/08

Melissa Lake Wright • 5-5 • Libero/DS • Junior • Palm Springs, CA

2008 – **Sophomore:** Played in 21 matches and 71 sets for BYU as a walk-on sophomore ... began the year as a defensive specialist but became the starting libero midway through the year ... finished the season with a team-best 253 digs along with two kills, 16 assists and eight aces ... led the team and ranked fifth in the Mountain West Conference with 3.56 digs per set ... was third in the league in that category in conference play (4.12) ... tallied 14 matches in double-figure kills, including two matches with 20 digs ... led the team in digs in 15 contests ... made her Cougar debut in BYU's season-opening match, playing one set against Utah State after walking on to the team ... saw time in the back row at the InnTownner Invitational, leading BYU with 18 digs at No. 14 Wisconsin ... outdug both liberos at No. 15 Colorado State, tallying 12 digs despite only playing half the time ... made her first career start against Air Force, posting 16 digs in three sets ... notched a career-high 20 digs at UNLV ... posted 19 digs at No. 23 Utah ... helped BYU stun No. 15 Colorado State in Provo with 20 digs in five sets, tying her career high ... named Academic All-MWC.

Season Averages	
Sets played:	59
Kills per set:	0.02
Assists per set:	0.44
Service aces per set:	0.10
Digs per set:	2.37



11

MELISSA LAKE WRIGHT – 2009 Match-by-Match																
Date	Opponent	ATTACK				Pct	SET	SERVE			PASS		BLOCK			GEN
		SP	K	E	TA			A	SA	SE	RE	DIG	BS	BA	BE	
Aug 28, 2009	vs Ole Miss	3	1	0	1	1.000	1	0	1	0	7	0	0	0	0.0	0
Aug 29, 2009	vs Texas State	3	0	0	0	.000	1	0	0	0	6	0	0	0	0.0	0
Aug 29, 2009	at Missouri	4	0	0	1	.000	2	0	1	0	7	0	0	0	0.0	0
Sep 01, 2009	at Utah State	5	0	0	0	.000	0	0	0	1	2	0	0	0	0.0	0
Sep 04, 2009	Cal Poly	5	0	0	1	.000	3	0	1	1	14	0	0	0	0.0	0
Sep 05, 2009	Weber State	3	0	0	1	.000	1	0	0	1	2	0	0	0	0.0	0
Sep 05, 2009	No. 23 Kansas St.	5	0	0	1	.000	2	1	1	1	18	0	0	0	0.0	0
Sep 10, 2009	vs No. 8 UCLA	4	0	0	0	.000	0	0	0	0	7	0	0	0	0.0	0
Sep 11, 2009	at No. 5 Nebraska	4	0	0	0	.000	2	0	1	1	14	0	0	0	0.0	0
Sep 12, 2009	vs Virginia	4	0	0	2	.000	2	3	0	2	11	0	0	0	0.0	0
Sep 17, 2009	SDSU	5	0	0	2	.000	5	1	1	0	18	0	0	0	0.0	1
Sep 19, 2009	Air Force	3	0	0	0	.000	1	0	2	0	3	0	0	0	0.0	0
Sep 25, 2009	at Utah	5	0	0	1	.000	2	0	1	0	15	0	0	0	0.0	0
Sep 29, 2009	NDSU BISON	3	0	0	3	.000	3	1	0	0	10	0	0	0	0.0	0
Oct 3, 2009	at UNLV	3	0	0	0	.000	1	0	2	0	6	0	0	0	0.0	0
Oct 8, 2009	New Mexico															
Oct 10, 2009	TCU															
Oct 15, 2009	at Colorado St.															
Oct 17, 2009	at Wyoming															
Oct 23, 2009	Utah															
Oct 27, 2009	Utah Valley															
Oct 29, 2009	UNLV															
Nov 5, 2009	at TCU															
Nov 7, 2009	at New Mexico															
Nov 12, 2009	Wyoming															
Nov 14, 2009	Colorado St.															
Nov 19, 2009	at Air Force															
Nov 21, 2009	at SDSU															
Nov 28, 2009	at St. Mary's															
<b>Totals</b>		<b>59</b>	<b>1</b>	<b>0</b>	<b>13</b>	<b>.077</b>	<b>26</b>	<b>6</b>	<b>11</b>	<b>7</b>	<b>140</b>	<b>0</b>	<b>0</b>	<b>0</b>	<b>0.0</b>	<b>1</b>

Season and Career Highs

- Kills**  
Season: 1 at Ole Miss, 8/28/09  
Career: 1 (three times)
- Hitting Percentage**  
Season: 1.000 at Ole Miss, 8/28/09  
Career: 1.000 at Ole Miss, 8/28/09
- Assists**  
Season: 5 vs. SDSU, 9/17/09  
Career: 5 vs. SDSU, 9/17/09
- Digs**  
Season: 18 (twice)  
Career: 20 (twice)
- Aces**  
Season: 3 vs. Virginia, 9/12/09  
Career: 3 vs. Virginia, 9/12/09

**Christina Measom • 6-0 • Middle Blocker • Junior • Lehi, UT**

**2008 – Sophomore:** Played in 18 matches and 51 sets for the Cougars as a sophomore ... began the season hitting on the rightside but started the last 11 matches of the year on the outside ... finished the year with 91 kills, two assists, 19 digs and 33 blocks on .154 hitting ... averaged 1.78 kills and 0.65 blocks per set ... tallied double-digit kills twice ... led BYU in kills once, hitting percentage twice and blocks four times ... made her 2008 season debut at the Texas A&M Invitational, playing one set apiece against Siena and American ... tallied a then-career-high eight kills on .700 hitting against Central Michigan ... came up big for the Cougars in her first start of the season vs. UNLV with a then-career-high nine kill on .381 hitting, both team bests ... posted seven kills at Air Force ... tallied eight kills, a career-high four digs and a then-season-best four blocks vs. TCU ... contributed seven kills on .429 hitting at SDSU ... recorded a career-high 12 kills at No. 23 Utah ... ended the year with 10 kills and four digs in BYU's five-set upset of No. 15 Colorado State and a career-high five blocks vs. Wyoming in the Cougars' last match of the year ... named Academic All-Mountain West Conference.

Season Averages	
Sets played:	59
Kills per set:	2.17
Assists per set:	0.10
Service aces per set:	0.02
Digs per set:	0.17
Blocks per set:	1.02



CHRISTINA MEASOM – 2009 Match-by-Match																		
Date	Opponent	SP	ATTACK				Pct	SET		SERVE		PASS		BLOCK			GEN	
			K	E	TA			A	SA	SE	RE	DIG	BS	BA	BE	Total	BHE	
Aug 28, 2009	vs Ole Miss	3	4	1	11	.273	1	0	0	0	0	0	2	0	2.0	0		
Aug 29, 2009	vs Texas State	3	5	1	11	.364	0	0	0	0	0	0	5	0	5.0	0		
Aug 29, 2009	at Missouri	4	10	3	18	.389	1	0	0	0	1	0	2	0	2.0	0		
Sep 01, 2009	at Utah State	5	13	2	25	.440	0	0	0	0	0	0	3	0	3.0	0		
Sep 04, 2009	Cal Poly	5	7	6	27	.037	1	0	0	0	0	0	1	1	1.0	0		
Sep 05, 2009	Weber State	3	5	2	8	.375	0	0	0	0	2	0	0	0	0.0	0		
Sep 05, 2009	No. 23 Kansas St.	5	14	7	31	.226	0	0	0	0	1	0	2	0	2.0	0		
Sep 10, 2009	vs No. 8 UCLA	4	6	4	22	.091	0	0	0	0	0	0	5	0	5.0	0		
Sep 11, 2009	at No. 5 Nebraska	4	12	3	22	.409	0	0	3	0	0	0	2	0	2.0	0		
Sep 12, 2009	vs Virginia	4	12	4	27	.296	0	1	3	0	1	0	4	0	4.0	0		
Sep 17, 2009	SDSU	5	8	5	26	.115	2	0	1	1	1	0	8	1	8.0	0		
Sep 19, 2009	Air Force	3	9	1	17	.471	1	0	0	0	0	1	6	0	7.0	0		
Sep 25, 2009	at Utah	5	7	4	32	.094	0	0	0	0	3	0	11	0	11.0	1		
Sep 29, 2009	NDSU BISON	3	10	6	22	.182	0	0	0	0	1	0	1	0	1.0	0		
Oct 3, 2009	at UNLV	3	6	3	15	.200	0	0	0	0	0	0	7	0	7.0	1		
Oct 8, 2009	New Mexico																	
Oct 10, 2009	TCU																	
Oct 15, 2009	at Colorado St.																	
Oct 17, 2009	at Wyoming																	
Oct 23, 2009	Utah																	
Oct 27, 2009	Utah Valley																	
Oct 29, 2009	UNLV																	
Nov 5, 2009	at TCU																	
Nov 7, 2009	at New Mexico																	
Nov 12, 2009	Wyoming																	
Nov 14, 2009	Colorado St.																	
Nov 19, 2009	at Air Force																	
Nov 21, 2009	at SDSU																	
Nov 28, 2009	at St. Mary's																	
<b>Totals</b>		<b>59</b>	<b>128</b>	<b>52</b>	<b>314</b>	<b>.242</b>	<b>6</b>	<b>1</b>	<b>7</b>	<b>1</b>	<b>10</b>	<b>1</b>	<b>59</b>	<b>2</b>	<b>60.0</b>	<b>2</b>		

**Season and Career Highs**

- Kills**  
Season: 14 vs. No. 23 Kansas St., 9/5/09  
Career: 14 vs. No. 23 Kansas St., 9/5/09
- Hitting Percentage**  
Season: .471 vs Air Force, 9/19/09  
Career: .700 vs. Cent. Michigan, 9/13/08
- Assists**  
Season: 2 vs. SDSU, 9/17/09  
Career: 2 (twice)
- Digs**  
Season: 3 at Utah, 9/25/09  
Career: 4 (twice)
- Blocks**  
Season: 11 at Utah, 9/25/09  
Career: 11 at Utah, 9/25/09

**Kiana Rogers • 5-11 • Setter • Junior • Placerville, CA**

2008 – **Sophomore:** Played in every match and every set for BYU as the starting setter in her sophomore season ... averaged 10.14 assists per set, which ranked third in the Mountain West Conference, while also finishing the year with 20 aces, 0.21 per contest ... ranked third in the league in assists in MWC play (10.40) ... tallied a team-best 10 double-doubles while posting double-digit digs in 10 matches on the year ... led the team in attack percentage four times, digs twice and blocks once ... posted two double-doubles during the BYU Molten Classic in the first weekend of the season, leading the Cougars in digs against Tulane (14) before putting up a career-high 21 digs against Missouri to help BYU capture the tournament title ... the 21 digs was the highest dig total recorded by any Cougar the entire season ... continued her double-double streak with 12 kills vs. Siena, 13 vs. American and 11 at Texas A&M in the Texas A&M Invitational the following weekend, marking five straight double-doubles ... also recorded a career-high five kills vs. American ... contributed 39 assists and 14 digs in BYU's five-set loss at then-No. 14 Wisconsin, her sixth double-double of the year ... hit a season-high .667 with four kills on six swings against Air Force ... notched a season-best 58 assists vs. SDSU ... tallied 49 assists and 12 digs vs. TCU ... posted 50 assists and 17 digs at UNLV followed by 55 assists and 10 digs at then-No. 23 Utah ... recorded her final double-double of the year in BYU's five-set upset win over then-No. 15 Colorado State with 50 assists and 14 digs to go along with a career-high six blocks.

Season Averages	
Sets played:	58
Kills per set:	0.59
Assists per set:	9.41
Service aces per set:	0.14
Digs per set:	2.24
Blocks per set:	0.91



KIANA ROGERS – 2009 Match-by-Match																	
Date	Opponent	ATTACK				Pct	SET		SERVE		PASS		BLOCK			GEN	
		SP	K	E	TA		A	SA	SE	RE	DIG	BS	BA	BE	Total	BHE	
Aug 28, 2009	vs Ole Miss	3	5	0	6	.833	27	0	2	0	6	0	3	1	3.0	1	
Aug 29, 2009	vs Texas State	3	1	0	4	.250	30	0	1	0	12	1	5	0	6.0	0	
Aug 29, 2009	at Missouri	4	3	0	6	.500	36	0	1	0	8	0	2	0	2.0	1	
Sep 01, 2009	at Utah State	5	3	1	6	.333	54	1	0	1	8	0	3	0	3.0	2	
Sep 04, 2009	Cal Poly	5	3	1	7	.286	41	1	1	0	7	0	3	0	3.0	0	
Sep 05, 2009	Weber State	3	2	0	4	.500	23	1	0	0	4	0	4	0	4.0	1	
Sep 05, 2009	No. 23 Kansas St.	5	2	0	7	.286	48	0	2	0	10	1	2	0	3.0	0	
Sep 10, 2009	vs No. 8 UCLA	4	1	0	5	.200	23	0	1	0	8	0	4	0	4.0	1	
Sep 11, 2009	at No. 5 Nebraska	4	1	1	6	.000	39	0	1	0	10	1	1	0	2.0	0	
Sep 12, 2009	vs Virginia	4	1	1	7	.000	41	1	2	0	11	0	2	0	2.0	0	
Sep 17, 2009	SDSU	5	4	2	8	.250	55	0	1	0	11	0	6	1	6.0	1	
Sep 19, 2009	Air Force	2	1	0	2	.500	20	1	2	0	4	0	1	0	1.0	1	
Sep 25, 2009	at Utah	5	5	2	9	.333	41	2	2	0	6	2	5	1	7.0	1	
Sep 29, 2009	NDSU BISON	3	1	0	4	.250	38	0	0	0	16	0	3	0	3.0	0	
Oct 3, 2009	at UNLV	3	1	0	1	1.000	30	1	1	0	9	0	4	1	4.0	0	
Oct 8, 2009	New Mexico																
Oct 10, 2009	TCU																
Oct 15, 2009	at Colorado St.																
Oct 17, 2009	at Wyoming																
Oct 23, 2009	Utah																
Oct 27, 2009	Utah Valley																
Oct 29, 2009	UNLV																
Nov 5, 2009	at TCU																
Nov 7, 2009	at New Mexico																
Nov 12, 2009	Wyoming																
Nov 14, 2009	Colorado St.																
Nov 19, 2009	at Air Force																
Nov 21, 2009	at SDSU																
Nov 28, 2009	at St. Mary's																
<b>Totals</b>		<b>58</b>	<b>34</b>	<b>8</b>	<b>82</b>	<b>.317</b>	<b>546</b>	<b>8</b>	<b>17</b>	<b>1</b>	<b>130</b>	<b>5</b>	<b>48</b>	<b>4</b>	<b>53.0</b>	<b>9</b>	

**Season and Career Highs**

- Kills**  
Season: 5 (twice)  
Career: 5 (three times)
- Hitting Percentage**  
Season: 1.000 at UNLV, 10/3/09  
Career: 1.000 at UNLV, 10/3/09
- Assists**  
Season: 55 vs. SDSU, 9/17/09  
Career: 72 at SDSU, 9/15/07
- Digs**  
Season: 16 vs. NDSU, 9/29/09  
Career: 21 vs. Missouri, 8/30/08
- Blocks**  
Season: 7 at Utah, 9/25/09  
Career: 7 at Utah, 9/25/09
- Aces**  
Season: 2 at Utah, 9/25/09  
Career: 3 (three times)

Stephanie Lau • 5-10 • Outside Hitter • Senior • Edmonds, WA

2008 – Junior: Saw action in seven matches and 10 sets as a junior at both the defensive specialist and outside hitter positions ... totaled four kills, 1 ace and five digs while hitting .250 on the year ... made her 2008 debut against Utah State in the BYU Molten Classic, playing one set ... played one set against Texas A&M as a defensive specialist ... saw action in two sets at Wyoming at the outside hitter position, tallying two kills ... played all three sets against Air Force, posting season highs of three digs and one ace ... recorded one kill against Wyoming in the final match of the year ... earned Academic All-Mountain West Conference honors.

Season Averages	
Sets played:	7
Kills per set:	0.29
Digs per set:	0.29



STEPHANIE LAU – 2009 Match-by-Match																	
Date	Opponent	ATTACK				Pct	SET		SERVE		PASS		BLOCK			GEN	
		SP	K	E	TA		A	SA	SE	RE	DIG	BS	BA	BE	Total	BHE	
Aug 28, 2009	@ Ole Miss	DNP															
Aug 29, 2009	vs Texas State	1	0	1	1	-1.000	0	0	0	1	0	0	0	0	0	0.0	0
Aug 29, 2009	at Missouri	1	0	0	0	.000	0	0	0	0	0	0	0	0	0	0.0	0
Sept 1, 2009	@ Utah State	DNP															
Sept 4, 2009	Cal Poly	DNP															
Sept 5, 2009	Weber State	DNP															
Sept 5, 2009	No. 23 Kansas St.	DNP															
Sept 10, 2009	vs No. 8 UCLA	DNP															
Sept 11, 2009	at No. 5 Nebraska	DNP															
Sept 12, 2009	vs Virginia	DNP															
Sept 17, 2009	SDSU	DNP															
Sep 19, 2009	Air Force	2	1	2	16	-.062	0	0	0	0	1	0	0	0	0.0	0	
Sep 25, 2009	at Utah	1	0	0	1	.000	0	0	0	0	0	0	0	0	0.0	0	
Sep 29, 2009	NDSU BISON	2	1	2	9	-.111	0	0	0	0	1	0	0	0	0.0	0	
Oct 3, 2009	at UNLV	DNP															
Oct 8, 2009	New Mexico																
Oct 10, 2009	TCU																
Oct 15, 2009	at Colorado St.																
Oct 17, 2009	at Wyoming																
Oct 23, 2009	Utah																
Oct 27, 2009	Utah Valley																
Oct 29, 2009	UNLV																
Nov 5, 2009	at TCU																
Nov 7, 2009	at New Mexico																
Nov 12, 2009	Wyoming																
Nov 14, 2009	Colorado St.																
Nov 19, 2009	at Air Force																
Nov 21, 2009	at SDSU																
Nov 28, 2009	at St. Mary's																
<b>Totals</b>		<b>7</b>	<b>2</b>	<b>5</b>	<b>27</b>	<b>-.111</b>	<b>0</b>	<b>0</b>	<b>0</b>	<b>1</b>	<b>2</b>	<b>0</b>	<b>0</b>	<b>0</b>	<b>0.0</b>	<b>0</b>	

Season and Career Highs

- Kills**  
Season: 1 (twice)  
Career: 2 at Wyoming, 9/18/08
- Hitting Percentage**  
Season: -  
Career: 1.000 vs. Air Force, 10/26/07
- Assists**  
Season: -  
Career: 1 (twice)
- Digs**  
Season: 1 (twice)  
Career: 8 at Weber State, 9/18/07
- Aces**  
Season: -  
Career: 4 at UVSC, 10/3/06

**Christie Carpenter • 6-1 • Outside Hitter • Sophomore • Cedar Hills, UT**

2007 – **Freshman:** Played in three matches and 10 games as a true freshman, tallying 16 kills, two aces, 13 digs and four blocks ... averaged 1.60 kills and 1.30 digs per game ... made her Cougar debut against American in the BYU Molten Classic, playing in two games and recording two kills, two aces and a career-high six digs ... made the first start of her career at Weber State, posting a personal-best eight kills, five digs and two blocks ... notched five kills, two digs and two blocks in a start vs. Air Force.

Season Averages	
Sets played:	54
Kills per set:	1.59
Assists per set:	0.07
Service aces per set:	0.17
Digs per set:	0.72
Blocks per set:	0.72



**14**

CHRISTIE CARPENTER – 2009 Match-by-Match																	
Date	Opponent	ATTACK					SET	SERVE			PASS		BLOCK			GEN	
		SP	K	E	TA	Pct		A	SA	SE	RE	DIG	BS	BA	BE	Total	BHE
Aug 28, 2009	vs Ole Miss	3	6	1	16	.312	0	1	1	0	6	0	1	0	1.0	0	
Aug 29, 2009	vs Texas State	3	6	5	24	.042	1	1	1	0	6	1	5	1	6.0	0	
Aug 29, 2009	at Missouri	4	9	8	36	.028	0	3	2	2	5	0	3	1	3.0	0	
Sep 01, 2009	at Utah State	5	11	5	31	.194	2	0	0	4	1	0	2	1	2.0	0	
Sep 04, 2009	Cal Poly	5	7	5	17	.118	1	0	0	0	5	0	6	2	6.0	0	
Sep 05, 2009	Weber State	3	5	4	13	.077	0	3	2	0	5	1	3	0	4.0	0	
Sep 05, 2009	No. 23 Kansas St.	5	5	2	21	.143	0	1	1	0	4	0	4	0	4.0	0	
Sep 10, 2009	vs No. 8 UCLA	4	4	4	21	.000	0	0	2	0	1	0	7	0	7.0	0	
Sep 11, 2009	at No. 5 Nebraska	4	8	3	23	.217	0	0	0	0	0	0	0	0	0.0	0	
Sep 12, 2009	vs Virginia	4	6	7	22	-.045	0	0	0	0	0	0	2	0	2.0	0	
Sep 17, 2009	SDSU	3	2	2	11	.000	0	0	1	1	1	0	1	1	1.0	0	
Sept 19, 2009	Air Force	DNP - Injured															
Sep 25, 2009	at Utah	5	7	7	30	.000	0	0	0	0	4	1	1	0	2.0	0	
Sep 29, 2009	NDSU BISON	3	4	1	18	.167	0	0	0	0	1	0	1	1	1.0	0	
Oct 3, 2009	at UNLV	3	6	2	17	.235	0	0	0	0	0	0	0	0	0.0	0	
Oct 8, 2009	New Mexico																
Oct 10, 2009	TCU																
Oct 15, 2009	at Colorado St.																
Oct 17, 2009	at Wyoming																
Oct 23, 2009	Utah																
Oct 27, 2009	Utah Valley																
Oct 29, 2009	UNLV																
Nov 5, 2009	at TCU																
Nov 7, 2009	at New Mexico																
Nov 12, 2009	Wyoming																
Nov 14, 2009	Colorado St.																
Nov 19, 2009	at Air Force																
Nov 21, 2009	at SDSU																
Nov 28, 2009	at St. Mary's																
<b>Totals</b>		<b>54</b>	<b>86</b>	<b>56</b>	<b>300</b>	<b>.100</b>	<b>4</b>	<b>9</b>	<b>10</b>	<b>7</b>	<b>39</b>	<b>3</b>	<b>36</b>	<b>7</b>	<b>39.0</b>	<b>0</b>	

**Season and Career Highs**

- Kills**  
Season: 11 at Utah State 9/1/09  
Career: 11 at Utah State 9/1/09
- Hitting Percentage**  
Season: .312 at Ole Miss, 8/28/09  
Career: .312 at Ole Miss, 8/28/09
- Assists**  
Season: 2 at Utah State, 9/1/09  
Career: 2 (twice)
- Digs**  
Season: 6 (twice)  
Career: 6 (three times)
- Blocks**  
Season: 7 vs. No. 8 UCLA, 9/10/09  
Career: 7 vs. No. 8 UCLA, 9/10/09
- Aces**  
Season: 3 (twice)  
Career: 3 (twice)



Casey Speredon Thurston • 6-1 • Outside Hitter • Sophomore • West Valley City, UT

**2008 – Freshman:** Saw action in 11 matches and 13 sets as a redshirt freshman ... totaled 18 kills, one dig and one block ... did not play the first nine matches of the year due to an injury suffered during the team's foreign tour in Argentina ... made her Cougar debut at Wyoming, playing one set ... also saw action in one set at then-No. 15 Colorado State ... tallied four kills on five swings in one set against Air Force, hitting .600 on the night ... posted one kill on two swings at New Mexico and saw action in one set at TCU ... put down a kill on her only swing against UNLV ... tied her career high with four kills at Air Force ... established a new career high with five kills vs. TCU while adding the first block of her BYU career ... played one set with one kill at UNLV ... saw action in one set at then-No. 23 Utah ... posted two kills on three swings against Wyoming in the final match of the year, recording a season-high .667 hitting percentage.

Season Averages	
Sets played:	48
Kills per set:	1.69
Assists per set:	0.04
Digs per set:	0.23
Blocks per set:	0.60



CASEY SPEREDON THURSTON – 2009 Match-by-Match																	
Date	Opponent	ATTACK				Pct	SET	SERVE			PASS		BLOCK			GEN	
		SP	K	E	TA			A	SA	SE	RE	DIG	BS	BA	BE	Total	BHE
Aug 28, 2009	vs Ole Miss	3	4	3	10	.100	0	0	0	0	0	3	0	3.0	0		
Aug 29, 2009	vs Texas State	3	5	0	10	.500	0	0	0	0	0	0	0	0.0	0		
Aug 29, 2009	at Missouri	4	9	2	25	.280	0	0	0	1	1	3	0	4.0	1		
Sep 01, 2009	at Utah State	5	6	8	19	-.105	1	0	0	2	0	1	0	1.0	0		
Sep 04, 2009	Cal Poly	5	8	2	18	.333	1	0	0	1	1	0	2	2.0	0		
Sep 05, 2009	Weber State	3	7	1	12	.500	0	0	0	0	0	0	0	0.0	0		
Sep 05, 2009	No. 23 Kansas St.	5	9	4	20	.250	0	0	0	0	1	0	3	3.0	0		
Sep 10, 2009	vs No. 8 UCLA	4	3	2	25	.040	0	0	0	2	0	3	0	3.0	1		
Sep 11, 2009	at No. 5 Nebraska	4	7	1	20	.300	0	0	0	2	0	2	0	2.0	0		
Sep 12, 2009	vs Virginia	4	7	6	27	.037	0	0	0	1	2	0	3	3.0	0		
Sep 17, 2009	SDSU	5	13	5	30	.267	0	0	0	2	0	1	4	5.0	0		
Sep 19, 2009	Air Force	3	3	3	10	.000	0	0	1	0	0	3	0	3.0	0		
Sept 25, 2009	at Utah	DNP - Injured															
Sept 29, 2009	North Dakota St.	DNP - Injured															
Oct 3, 2009	at UNLV	DNP - Injured															
Oct 8, 2009	New Mexico																
Oct 10, 2009	TCU																
Oct 15, 2009	at Colorado St.																
Oct 17, 2009	at Wyoming																
Oct 23, 2009	Utah																
Oct 27, 2009	Utah Valley																
Oct 29, 2009	UNLV																
Nov 5, 2009	at TCU																
Nov 7, 2009	at New Mexico																
Nov 12, 2009	Wyoming																
Nov 14, 2009	Colorado St.																
Nov 19, 2009	at Air Force																
Nov 21, 2009	at SDSU																
Nov 28, 2009	at St. Mary's																
<b>Totals</b>		<b>48</b>	<b>81</b>	<b>37</b>	<b>226</b>	<b>.195</b>	<b>2</b>	<b>0</b>	<b>1</b>	<b>4</b>	<b>11</b>	<b>2</b>	<b>27</b>	<b>2</b>	<b>29.0</b>	<b>2</b>	

Season and Career Highs

- Kills**  
Season: 13 vs. SDSU, 9/17/09  
Career: 13 vs. SDSU, 9/17/09
- Hitting Percentage**  
Season: .500 (twice)  
Career: .667 vs. Wyoming, 11/22/08
- Assists**  
Season: 1 (twice)  
Career: 1 (twice)
- Digs**  
Season: 2 (four times)  
Career: 2 (four times)
- Blocks**  
Season: 5 vs. SDSU, 9/17/09  
Career: 5 vs. SDSU, 9/17/09
- Aces**  
Season: -  
Career: -

Chelsea Goodsell • 5-2 • Libero • Sophomore • Laguna Niguel, CA



**BEFORE BYU**

**Sacramento State University:** Played one season for Sacramento State under legendary head coach Debby Colberg ... helped her team compile a 29-8 overall record while winning the Big Sky Conference Championship and advancing to the second round of the NCAA Tournament before losing to eventual national runner-up Stanford ... played in every match for the Hornets as a freshman, ranking second on the team with 4.37 digs per game ... also served up 30 aces on the year ... recorded double-digit digs in 31 matches on the year, topping the 20-dig mark nine times ... tallied a career-high 30 digs against Portland State ... posted five aces against Montana ... notched 15 digs in a four-game win against Minnesota in the first round of the NCAA Tournament.

Season Averages	
Sets played:	49
Kills per set:	0.00
Assists per set:	0.18
Service aces per set:	0.18
Digs per set:	1.92

CHELSEA GOODSSELL – 2009 Match-by-Match																	
Date	Opponent	SP	ATTACK				SET	SERVE			PASS		BLOCK			GEN	
			K	E	TA	Pct		A	SA	SE	RE	DIG	BS	BA	BE	Total	BHE
Aug 28, 2009	vs Ole Miss	DNP															
Aug 29, 2009	vs Texas State	DNP															
Aug 29, 2009	at Missouri	DNP															
Sep 01, 2009	at Utah State	5	0	0	0	.000	0	0	3	0	9	0	0	0	0.0	0	
Sep 04, 2009	Cal Poly	5	0	2	5	-.400	2	1	2	1	7	0	0	0	0.0	0	
Sep 05, 2009	Weber State	3	0	0	0	.000	1	0	1	1	3	0	0	0	0.0	0	
Sep 05, 2009	No. 23 Kansas St.	5	0	1	2	-.500	2	2	0	0	13	0	0	0	0.0	0	
Sep 10, 2009	vs No. 8 UCLA	4	0	0	0	.000	0	0	1	1	6	0	0	0	0.0	0	
Sep 11, 2009	at No. 5 Nebraska	4	0	1	1	-1.000	2	1	1	1	13	0	0	0	0.0	0	
Sep 12, 2009	vs Virginia	4	0	0	2	.000	0	0	2	1	18	0	0	0	0.0	0	
Sep 17, 2009	SDSU	5	0	0	0	.000	1	2	1	1	8	0	0	0	0.0	0	
Sep 19, 2009	Air Force	3	0	0	0	.000	0	1	1	0	2	0	0	0	0.0	0	
Sep 25, 2009	at Utah	5	0	0	1	.000	0	2	3	2	9	0	0	0	0.0	0	
Sep 29, 2009	NDSU BISON	3	0	0	0	.000	0	0	0	1	2	0	0	0	0.0	0	
Oct 3, 2009	at UNLV	3	0	0	0	.000	1	0	1	0	4	0	0	0	0.0	0	
Oct 8, 2009	New Mexico																
Oct 10, 2009	TCU																
Oct 15, 2009	at Colorado St.																
Oct 17, 2009	at Wyoming																
Oct 23, 2009	Utah																
Oct 27, 2009	Utah Valley																
Oct 29, 2009	UNLV																
Nov 5, 2009	at TCU																
Nov 7, 2009	at New Mexico																
Nov 12, 2009	Wyoming																
Nov 14, 2009	Colorado St.																
Nov 19, 2009	at Air Force																
Nov 21, 2009	at SDSU																
Nov 28, 2009	at St. Mary's																
<b>Totals</b>		<b>49</b>	<b>0</b>	<b>4</b>	<b>11</b>	<b>-.364</b>	<b>9</b>	<b>9</b>	<b>16</b>	<b>9</b>	<b>94</b>	<b>0</b>	<b>0</b>	<b>0</b>	<b>0.0</b>	<b>0</b>	

**Season and Career Highs**

**Kills**

Season: -  
Career: -

**Hitting Percentage**

Season: -  
Career: -

**Assists**

Season: 2 (three times)  
Career: 2 (three times)

**Digs**

Season: 18 vs. Virginia, 9/12/09  
Career: 18 vs. Virginia, 9/12/09

**Aces**

Season: 2 (twice)  
Career: 2 (twice)

Nicole Warner • 6-2 • Middle Blocker • Freshman • Rigby, ID

AT BYU  
2008 – REDSHIRT

BEFORE BYU

**Club:** Played for the Idaho Falls Juniors under coaches Teresa Anderson and Dave Cousins ... hit .543 while averaging 1.3 blocks per game in 2007 ... qualified for Nationals in 2007 during High Performance at the IVA.

**High School:** Two-year letterwinner at Rigby High School in Rigby, Idaho, under head coach Jeff Selditz ... named first-team all-state as a senior in 2007 after posting 332 kills and 197 blocks ... also received 4A All-Area First Team and High Country All-Conference honors following her senior campaign ... helped her team finish second in the district and fourth in the state ... earned MVP recognition at the Wood River Invitational ... also a two-year letterwinner and all-conference honoree in basketball ... participated in the America's Junior Miss pageant, earning third runner-up ... high honor roll all four years of high school.

Season Averages	
Sets played:	59
Kills per set:	1.58
Assists per set:	0.05
Service aces per set:	0.10
Digs per set:	0.32
Blocks per set:	1.27



NICOLE WARNER – 2009 Match-by-Match																			
Date	Opponent	ATTACK					Pct	SET			SERVE		PASS		BLOCK			GEN	
		SP	K	E	TA	TA		A	SA	SE	RE	DIG	BS	BA	BE	Total	BHE		
Aug 28, 2009	vs Ole Miss	3	5	0	11	.455	0	1	2	0	1	0	4	1	4.0	0			
Aug 29, 2009	vs Texas State	3	8	1	14	.500	0	0	1	0	2	1	3	0	4.0	0			
Aug 29, 2009	at Missouri	4	4	5	18	-.056	0	1	0	0	2	1	7	1	8.0	0			
Sep 01, 2009	at Utah State	5	6	3	18	.167	0	2	1	0	1	0	5	0	5.0	0			
Sep 04, 2009	Cal Poly	5	8	5	24	.125	0	0	2	0	0	0	5	2	5.0	0			
Sep 05, 2009	Weber State	3	3	2	10	.100	0	0	0	0	1	1	2	0	3.0	0			
Sep 05, 2009	No. 23 Kansas St.	5	12	0	24	.500	1	0	0	0	1	0	7	2	7.0	0			
Sep 10, 2009	vs No. 8 UCLA	4	0	2	14	-.143	0	1	1	0	1	0	7	2	7.0	0			
Sep 11, 2009	at No. 5 Nebraska	4	6	1	13	.385	0	0	0	0	1	0	5	0	5.0	0			
Sep 12, 2009	vs Virginia	4	7	2	20	.250	1	0	2	0	2	0	3	1	3.0	0			
Sep 17, 2009	SDSU	5	8	3	21	.238	0	1	2	0	2	0	5	1	5.0	0			
Sep 19, 2009	Air Force	3	4	0	7	.571	0	0	0	0	1	0	4	1	4.0	0			
Sep 25, 2009	at Utah	5	6	3	18	.167	1	0	2	0	1	2	4	0	6.0	0			
Sep 29, 2009	NDSU BISON	3	11	1	16	.625	0	0	0	0	1	0	5	0	5.0	0			
Oct 3, 2009	at UNLV	3	5	2	11	.273	0	0	0	0	2	0	4	1	4.0	0			
Oct 8, 2009	New Mexico																		
Oct 10, 2009	TCU																		
Oct 15, 2009	at Colorado St.																		
Oct 17, 2009	at Wyoming																		
Oct 23, 2009	Utah																		
Oct 27, 2009	Utah Valley																		
Oct 29, 2009	UNLV																		
Nov 5, 2009	at TCU																		
Nov 7, 2009	at New Mexico																		
Nov 12, 2009	Wyoming																		
Nov 14, 2009	Colorado St.																		
Nov 19, 2009	at Air Force																		
Nov 21, 2009	at SDSU																		
Nov 28, 2009	at St. Mary's																		
<b>Totals</b>		<b>59</b>	<b>93</b>	<b>30</b>	<b>239</b>	<b>.264</b>	<b>3</b>	<b>6</b>	<b>13</b>	<b>0</b>	<b>19</b>	<b>5</b>	<b>70</b>	<b>12</b>	<b>75.0</b>	<b>0</b>			

Season and Career Highs

Kills

Season: 12 vs. No. 23 Kansas St., 9/5/09  
Career: 12 vs. No. 23 Kansas St., 9/5/09

Hitting Percentage

Season: .625 vs. NDSU, 9/29/09  
Career: .625 vs. NDSU, 9/29/09

Assists

Season: 1 (twice)  
Career: 1 (twice)

Digs

Season: 2 (five times)  
Career: 2 (five times)

Blocks

Season: 8 at Missouri 8/29/09  
Career: 8 at Missouri 8/29/09

Aces

Season: 2 at Utah State, 9/1/09  
Career: 2 at Utah State, 9/1/09

Camilla Phillips • 5-11 • Outside Hitter • Junior • Jordan, UT

**BEFORE BYU**

**Salt Lake Community College:** Played two seasons at Salt Lake Community College, including her freshman year under current BYU head coach Shay Goulding ... 2008 NJCAA honorable mention All-American ... named All-Region 18 First Team in 2008 and was placed on the Region 18 All-Tournament Team ... helped her team take the Scenic West Athletic Conference and District A titles both seasons she played ... team finished third at Nationals in 2007 and ninth in 2008 ... totaled 374 kills (3.07/set) on .288 hitting with 67 blocks as a sophomore ... finished her freshman campaign with 76 kills on .291 hitting and 13 blocks.

Season Averages	
Sets played:	25
Kills per set:	1.04
Assists per set:	0.04
Digs per set:	0.36
Blocks per set:	0.52



CAMILLA PHILLIPS – 2009 Match-by-Match																		
Date	Opponent	ATTACK					SET A	SERVE			PASS		BLOCK			Total	GEN BHE	
		SP	K	E	TA	Pct		SA	SE	RE	DIG	BS	BA	BE				
Aug 28, 2009	vs Ole Miss	DNP																
Aug 29, 2009	vs Texas State	2	0	0	1	.000	0	0	0	0	0	0	0	0	0	0	0	0
Aug 29, 2009	at Missouri	1	1	1	3	.000	0	0	1	0	0	0	0	0	0	0	0	1
Sept 1, 2009	at Utah State	DNP																
Sep 04, 2009	Cal Poly	2	1	0	1	1.000	0	0	0	0	0	0	1	0	1.0	0		
Sep 5, 2009	Weber State	DNP																
Sep 5, 2009	No. 23 Kansas St.	DNP																
Sep 10, 2009	vs No. 3 UCLA	1	0	1	5	-.200	0	0	0	0	2	0	0	0	0.0	0		
Sept 11, 2009	at No. 5 Nebraska	DNP																
Sep 12, 2009	vs Virginia	2	1	2	7	-.143	0	0	0	0	0	0	0	0	0.0	0		
Sep 17, 2009	SDSU	3	0	2	5	-.400	1	0	0	0	0	0	1	0	1.0	0		
Sep 19, 2009	Air Force	3	6	2	11	.364	0	0	0	0	0	0	3	0	3.0	0		
Sep 25, 2009	at Utah	5	8	4	21	.190	0	0	0	1	1	0	6	0	6.0	1		
Sep 29, 2009	NDSU BISON	3	3	6	19	-.158	0	0	0	0	5	0	0	0	0.0	0		
Oct 3, 2009	at UNLV	3	6	3	19	.158	0	0	0	0	1	0	2	0	2.0	0		
Oct 8, 2009	New Mexico																	
Oct 10, 2009	TCU																	
Oct 15, 2009	at Colorado St.																	
Oct 17, 2009	at Wyoming																	
Oct 23, 2009	Utah																	
Oct 27, 2009	Utah Valley																	
Oct 29, 2009	UNLV																	
Nov 5, 2009	at TCU																	
Nov 7, 2009	at New Mexico																	
Nov 12, 2009	Wyoming																	
Nov 14, 2009	Colorado St.																	
Nov 19, 2009	at Air Force																	
Nov 21, 2009	at SDSU																	
Nov 28, 2009	at St. Mary's																	
<b>Totals</b>		<b>25</b>	<b>26</b>	<b>21</b>	<b>92</b>	<b>.054</b>	<b>1</b>	<b>0</b>	<b>1</b>	<b>1</b>	<b>9</b>	<b>0</b>	<b>13</b>	<b>0</b>	<b>13.0</b>	<b>2</b>		

**Season and Career Highs**

**Kills**

Season: 8 at Utah, 9/25/09  
 Career: 8 at Utah, 9/25/09

**Hitting Percentage**

Season: 1.000 vs. Cal Poly, 9/4/09  
 Career: 1.000 vs. Cal Poly, 9/4/09

**Assists**

Season: 1 vs. SDSU, 9/17/09  
 Career: 1 vs. SDSU, 9/17/09

**Digs**

Season: 5 vs. NDSU, 9/29/09  
 Career: 5 vs. NDSU, 9/29/09

**Blocks**

Season: 6 at Utah, 9/25/09  
 Career: 6 at Utah, 9/25/09

**Aces**

Season: -  
 Career: -

**Heather Hannemann • 5-8 • Setter • Freshman • Alpine, UT**

**BEFORE BYU**

**Club:** Played for Utah Peak Performance under former BYU assistant coach Brooke Huebner and former Cougar standout Lindsay Hartsock ... took first place at the Las Vegas Invitational 18's Club Division ... earned second place at the Colorado Crossroads 18's Club Division ... qualified for Nationals in 2009.

Season Averages	
Sets played:	7
Kills per set:	0.00
Assists per set:	1.86
Service aces per set:	0.29
Digs per set:	0.29
Blocks per set:	0.14



HEATHER HANNEMANN – 2009 Match-by-Match																
Date	Opponent	ATTACK					SET A	SERVE		PASS		BLOCK			Total	GEN BHE
		SP	K	E	TA	Pct		SA	SE	RE	DIG	BS	BA	BE		
Aug 28, 2009	@ Ole Miss	DNP														
Aug 29, 2009	vs Texas State	1	0	0	0	.000	0	0	0	0	0	0	0	0	0.0	0
Aug 29, 2009	at Missouri	1	0	0	0	.000	0	0	0	0	0	0	0	0	0.0	0
Sept 1, 2009	@ Utah State	DNP														
Sept 4, 2009	Cal Poly	DNP														
Sept 5, 2009	Weber State	DNP														
Sept 5, 2009	No. 23 Kansas St.	DNP														
Sep 10, 2009	vs UCLA	2	0	0	1	.000	1	0	0	0	0	1	0	1.0	0	
Sep 11, 2009	at Nebraska	1	0	0	0	.000	0	0	0	0	0	0	0	0.0	1	
Sep 12, 2009	vs Virginia	1	0	0	0	.000	3	0	1	0	0	0	0	0.0	0	
Sept 17, 2009	SDSU	DNP														
Sep 19, 2009	Air Force	1	0	0	0	.000	9	2	1	0	2	0	0	0.0	0	
Sept 25, 2009	at Utah	DNP														
Sept 29, 2009	North Dakota St.	DNP														
Oct 3, 2009	at UNLV	DNP														
Oct 8, 2009	New Mexico															
Oct 10, 2009	TCU															
Oct 15, 2009	at Colorado St.															
Oct 17, 2009	at Wyoming															
Oct 23, 2009	Utah															
Oct 27, 2009	Utah Valley															
Oct 29, 2009	UNLV															
Nov 5, 2009	at TCU															
Nov 7, 2009	at New Mexico															
Nov 12, 2009	Wyoming															
Nov 14, 2009	Colorado St.															
Nov 19, 2009	at Air Force															
Nov 21, 2009	at SDSU															
Nov 28, 2009	at St. Mary's															
<b>Totals</b>		<b>7</b>	<b>0</b>	<b>0</b>	<b>1</b>	<b>.000</b>	<b>13</b>	<b>2</b>	<b>2</b>	<b>0</b>	<b>2</b>	<b>0</b>	<b>1</b>	<b>0</b>	<b>1.0</b>	<b>1</b>

**Season and Career Highs**

**Kills**

Season: -  
Career: -

**Hitting Percentage**

Season: -  
Career: -

**Assists**

Season: 9 vs. Air Force, 9/19/09  
Career: 9 vs. Air Force, 9/19/09

**Digs**

Season: 2 vs. Air Force, 9/19/09  
Career: 2 vs. Air Force, 9/19/09

**Blocks**

Season: -  
Career: -

**Aces**

Season: 2 vs. Air Force, 9/19/09  
Career: 2 vs. Air Force, 9/19/09



8  
Marisa  
Boaz

Middle Blocker  
6-1 • Senior

Sandy, Utah

Brighton High School

Major: Dietetics

**CAREER MATCH HIGHS**

- Kills: 10 vs New Mexico, 10/7/06
- Hitting Percentage: 1.000 (twice)
  - Assists: 1 (twice)
- Aces: 1 vs Texas A&M Corpus Christi, 9/2/06
  - Digs: 3 vs TCU, 10/6/06
- Blocks: 6 vs Texas A&M Corpus Christi, 9/2/06

**AT BYU**

**2008 – Junior:** Played in three matches and four sets as a junior, totaling 1 assist, one dig and four blocks for an average of one block per set ... made her season debut at Wyoming, playing in one set and tallying one dig ... saw action in one set at Air Force ... tied her career high with one assist and had a season-high four blocks in the Cougars' final match of the year at Wyoming.

**2007 – Sophomore:** Played in two matches and two games for the Cougars as a sophomore, totaling four kills on the year ... made her season debut in the third game against Utah Valley State, putting down one kill on one swing ... posted a season-high three kills in one game against Air Force in just her second match of the season.

**2006 – Freshman:** Played in 10 matches coming out of her redshirt year, totaling 23 kills, one assist, one ace, seven digs and 25 blocks ... averaged 1.32 blocks per game and 1.21 kills per game on .347 hitting ... made her Cougar debut against Central Florida at the UCF Fall Invitational ... posted a career-high six blocks against Texas A&M Corpus Christi ... started against Wyoming, TCU and New Mexico in place of the injured Rachel Dyer, recording a career-high 10 kills on .667 hitting against the Lobos while adding five blocks.

**2005 – REDSHIRT:** 2005 Cougar Club Scholar Athlete.

**BEFORE BYU**

**Club:** Played for Club Jamba under head coach Tom Clarke ... placed sixth at the National Volleyball Festival in Reno, Nev.

**High School:** Four-year letterwinner at Monache High School under head coach Kyle Newlin ... named league MVP as a senior ... earned Orange Belt Region First Team honors and first-team all-league accolades as a junior and senior ... varsity team MVP in both seasons ... also played varsity basketball as a sophomore and was the varsity track MVP as a freshman, sophomore and junior before breaking her foot before her senior season ... MHS Scholar-Athlete ... involved in Student Council, Link Crew and the California Scholarship Federation ... was the CSF Sealbearer and Valedictorian of her high school class.

**PERSONAL**

Parents are Thomas and Nancy Honka ... has one sister and two brothers ... one brother also attends BYU ... enjoys playing basketball, snowboarding, reading, watching movies, sleeping and eating ... favorite books include *The Count of Monte Cristo*, *The Three Musketeers*, *Angels and Demons*, and the Harry Potter series ... favorite movie is *Pirates of the Caribbean* ... favorite actor is Johnny Depp ... favorite actress is Sandra Bullock ... enjoys Chipotle burritos, fruit, panini sandwiches and home-made orange ice cream ... sports hero is Misty May because of her love for the game ... began playing volleyball in the fourth grade ... spent one year at BYU not playing volleyball, making her a redshirt freshman in eligibility ... undeclared major.

17  
Courtney  
Honka



Libero/Defensive Specialist  
5-8 • Freshman

Porterville, Calif.

Monache High School

Major: Undeclared



5  
**Brooke**  
**Taulii Soon**

**Setter**  
**5-11 • Sophomore**  
 Torrance, Calif.  
 North Torrance High School  
 Major: Exercise and Wellness

**AT BYU**  
 2008 – Served as the team manager.

2007 – REDSHIRT

**BEFORE BYU**  
**Club:** Played for the Southern California Volleyball Club 18-Nike team under current USC head coach Mick Haley.

**High School:** Two-year letterwinner at North Torrance High School under head coach Lawrence Hom ... earned first-team all-league recognition as a senior in 2006 while totaling 246 kills, 21 assists, 56 aces, 420 digs and 31 blocks on .300 hitting ... also named team captain and all-tournament in 2006 ... team advanced to the CIF semifinals during her junior year in 2005 ... played with the junior varsity team as a freshman and sophomore, serving as team captain in 2004 and earning team MVP honors ... also earned all-tournament honors as a sophomore ... named to the Honor Roll as a freshman, sophomore and junior ... also received NTHS's Excellent Citizenship Award all three years ... active member of the Student Council, Polynesian Club, Letterman's Club and National Honors Society.

**PERSONAL**  
 Parents are Kevin and Gina Taulii ... got married in the summer of 2009 to Kamali Soon ... has three sisters ... sister Amanda plays softball for the University of Hawai'i ... enjoys snowboarding, going to the beach and board games ... sports hero is AVP Tour player Kerri Walsh ... played soccer growing up until undergoing hip surgery in the eighth grade and switching to volleyball in high school ... exercise and wellness major.

**BEFORE BYU**  
**Club:** Played for Vegas Blues under head coach Shannon Alia.

**High School:** Four-year letterwinner at Centennial High School under head coach Shannon Alia ... named region MVP and all-region first team ... also named team MVP ... lettered in track and field ... involved in Student Council ... Valedictorian of her graduating class.

**PERSONAL**  
 Parents are Mike and DeDe Sagers ... has two brothers and one sister ... all played volleyball in high school, and brother Kevin is currently an outside hitter on the BYU men's volleyball team ... favorite food is Mexican food ... favorite musician is Carrie Underwood and favorite actor is Jim Carrey ... favorite movie is *Rocketman* ... enjoys playing the piano ... sports hero is Olympic gymnastics champion Shawn Johnson ... exercise science major.

13  
**Lauren**  
**Sagers**



**Rightside Hitter**  
**6-0 • Freshman**  
 Las Vegas, Nev.  
 Centennial High School  
 Major: Exercise Science



3  
C o u r t n e y  
D o n a l d s o n

Rightside Hitter  
6-0 • Freshman

LaVerne, Calif.  
Bonita High School  
Major: Undeclared

**BEFORE BYU**

**Club:** Played for the Club West Volleyball Club 2004-09 for all four elite teams ... participated in the Junior Olympics 2005-08.

**High School:** Three-year letterwinner at Bonita High School under head coach Morgan Coberly ... named team MVP in 2008 ... team captain ... team offensive MVP in 2007 ... first team All-San Gabriel Valley ... Miramonte League MVP ... CIF First Team ... first-team all-league ... Miramonte league champions in 2006, 2007 and 2008 ... CIF semifinalist ... three-time San Gabriel Valley Tribune Athlete of the Week ... career high 23 kills, six blocks and 14 service aces.

**PERSONAL**

Parents are Paul and Debra Donaldson ... has one brother and two sisters ... participated in her high school choir ... cheerleader four years in high school, lettering two years on varsity ... member of student government ... Bonita HS mascot ... major undeclared.

**BEFORE BYU**

**Club:** Played for Club V under coach Reed Carlson ... won the Inter Mountain Region and finished 38th at the Junior Olympics in 2008 ... team captain.

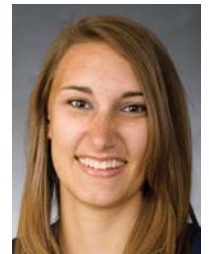
**High School:** Three-year varsity letterwinner at Layton High School ... named All-Region 1 First Team by the Ogden Standard Examiner ... also garnered all-state honorable mention while helping her team win the region championship and place fifth at the state championship tournament in 2008 ... named a Standard Examiner Prep of the Week and Deseret News Student-Athlete of the Week during the season ... career highs of 25 kills, eight blocks and five service aces ... academic honors include Student of the Month as both a freshman and a junior ... active in Book Club and HOSA ... also named all-state honorable mention in basketball.

**PERSONAL**

Parents are Alan and Melinda LeCheminant ... has two sisters and one brother ... both sisters also play volleyball while her dad was on the ski team at BYU and her mom high-jumped for BYU and Texas A&M, becoming the NCAA Champion in the high jump in 1989 ... sports hero is Michael Jordan and non-sports hero is Emma Smith ... enjoys reading, playing with kids, making porcelain dolls and other arts and crafts, taking pictures and being outside ... also recruited by Utah, UNLV, Utah State, Maryland, Lamar, South Carolina, West Virginia, Southern Utah and Virginia ... undeclared major.

4

K a t h r y n  
L e C h e m i n a n t



Middle Blocker  
6-2 • Freshman

Bountiful, Utah  
Layton High School  
Major: Undeclared





**MOUNTAIN WEST CONFERENCE**

BYU is a member of the Mountain West Conference. The Cougars own a 107-41 (.723) league record in the 10 seasons of the MWC after finishing 2008 in sixth place with a 7-9 mark.

BYU won the inaugural regular season title in 1999 with a 13-1 record and won again in 2005 with a 14-2 mark. BYU appeared in the MWC Tournament title match in each of the first two seasons, winning the title over Colorado State in Fort Collins in 2000 after losing the 1999 title to the Rams in Provo. Utah won the 2001 and 2002 crowns, in Provo and Fort Collins, respectively while Colorado State captured the 2003 title in San Diego and the 2004 crown on its home court. Utah won the 2005 title, Colorado State took home the crown in 2006 and UNLV earned the title in 2007, all in Las Vegas.

Six of the nine MWC programs have competed in postseason action in the 10 years since the league was formed. In 2008, two MWC teams earned NCAA bids, including Utah (automatic) and Colorado State (at-large). Overall, BYU has made 24 NCAA appearances, followed by Colorado State with 20, SDSU with 13, Utah with 10, New Mexico with seven, Wyoming with four and UNLV with one.

Three MWC teams were ranked in 2008 as BYU, Colorado State and Utah represented the league in the AVCA Coaches' Top 25 Poll.

BYU has a winning record over every MWC team with an overall conference winning percentage of .793.

**BYU vs. MWC (ENTERING 2009)**

- vs. Air Force . . . . .22-1-0 (.957)
- vs. Colorado St. . . . .48-22-1 (.683)
- vs. New Mexico . . . . .61-11-0 (.847)
- vs. San Diego State . . . . .37-17-0 (.685)
- vs. TCU . . . . .12-1 (.923)
- vs. UNLV . . . . .21-6-0 (.778)
- vs. Utah . . . . .64-23-0 (.736)
- vs. Wyoming . . . . .63-4-0 (.940)
- Overall vs. MWC . . . . .328-85-1 (.793)

**2008 MWC Final Standings**

Team	Conference			Overall		
	W	L	Pct	W	L	Pct
Utah.....	14	2	.875	26	6	.812
Colorado State.....	12	4	.750	23	7	.767
New Mexico.....	11	5	.688	22	7	.759
TCU.....	9	7	.562	20	12	.625
UNLV.....	9	7	.562	16	14	.533
BYU.....	7	9	.438	14	12	.538
San Diego State....	6	10	.375	9	17	.346
Wyoming.....	4	12	.250	5	20	.200
Air Force.....	0	16	.000	5	24	.172

**MWC Players of the Week**

- Sept. 2 *Bryn Porter, Sr., OH, BYU*
- Sept. 8 *Jeanne Fairchild, Sr., OH, UNM*
- Sept. 15 *Katelyn Steffan, R-Fr., OPP, CSU*
- Sept. 22 *Mekana Barnes, Sr., MB, CSU*  
*Devon Kirk, Sr., MB, TCU*
- Sept. 29 *Tessa Nelson, R-Jr., MB, CSU*  
*Jade Michaelsen, So., S, UNM*
- Oct. 6 *Lori Baird, Sr., OH, Utah*
- Oct. 13 *Mekana Barnes, Sr., MB, CSU*  
*Emillie Toone, Sr., MB, Utah*
- Oct. 20 *Megan Munce, Fr., DS, TCU*  
*Lori Baird, Sr., OH, Utah*
- Oct. 27 *Jeanne Fairchild, Sr., OH, UNM*
- Nov. 3 *Lauren Van Orden, Fr., L/OPP, SDSU*  
*Emillie Toone, Sr., MB, Utah*
- Nov. 10 *Kourtney Edwards, Jr., MB, TCU*  
*Lori Baird, Sr., OH, Utah*
- Nov. 17 *Jeanne Fairchild, Sr., OH, UNM*
- Nov. 24 *Rachel Dyer, Sr., MB, BYU*  
*Lori Baird, Sr., OH, Utah*

**Cougars Among MWC Top 10 (Overall/Conf.)**

Individual			Team		
Hitting Percentage			Hitting Percentage		
No. 8/10	Rachel Dyer	.316/.311	No. 5/6		.209/.191
Assists			Assists		
No. 3/3	Kiana Rogers	10.14/10.40	No. 6/6		11.62/11.73
Kills			Blocks		
No. 6/3	Kayla Walker	3.03/3.23	No. 3/4		2.67/2.53
Aces			Kills		
No. T4/NR	Morgan Lloyd	0.25/NR	No. 6/6		12.55/12.45
No. T7/4	Rachel Dyer	0.24/0.31	Service Aces		
Digs			No. 4/4		1.20/1.25
No. 5/3	Melissa Lake	3.56/4.12	Digs		
Blocks			No. 4/4		13.52/13.54
No. 4/9	Ashton Hansen Hosford	1.29/1.08	Opponent Hitting Percentage		
No. 9/10	Rachel Dyer	1.09/1.04	No. 4/4		.177/.185
No. 10/NR	Malia Marquardt	1.05/NR			
Points					
No. 5/4	Kayla Walker	3.64/3.93			
No. 9/NR	Bryn Porter	3.33/NR			

**2008 Honors**

**Preseason All-Mountain West Conference**

Rachel Dyer

**Molten Classic All-Tournament**

Bryn Porter - MVP  
Malia Marquardt

**Texas A&M Invitational All-Tournament**

Rachel Dyer  
Kayla Walker

**InnTowner Invitational All-Tournament**

Rachel Dyer  
Bryn Porter

**MWC Player of the Week**

Bryn Porter - Sept. 2  
Rachel Dyer - Nov. 24

**All-MWC**

Rachel Dyer  
Kayla Walker

**Academic All-MWC**

Rachel Dyer  
Ashton Hansen Hosford  
Melissa Lake  
Stephanie Lau  
Morgan Lloyd  
Christina Measom  
Bryn Porter  
Kayla Walker

**Cougar Club Y Award**

Shawn Olmstead  
*Assistant Coach of the Year*

**Cougars By The Numbers**

**Double-Digit Kills:**

Player	Total	Streak	High
Kayla Walker	17	5	21
Bryn Porter	16	0	19
Rachel Dyer	12	3	14
Malia Marquardt	4	0	15
Ashton H. Hosford	3	0	13
Christina Measom	2	0	12

**20+ Kills:**

Kayla Walker (2)  
*at UNLV (11/6) - 21*  
*at Utah (11/14) - 20*

**Double-Digit Digs:**

Player	Total	Streak	High
Melissa Lake	14	0	20
Kiana Rogers	10	0	21
Morgan Lloyd	10	0	19
Bryn Porter	10	0	16
Kayla Walker	9	1	15
Malia Marquardt	3	0	15

**20+ Digs:**

Melissa Lake (2)  
*at UNLV (11/6) - 20*  
*CSU (11/20) - 20*

Kiana Rogers (1)  
*Missouri (8/30) - 21*

**10+ Blocks:**

Rachel Dyer (1)  
*CSU (11/20) - 10*

Ashton Hansen (1)  
*Tulane (8/30) - 13*

**Double-Doubles:**

Kiana Rogers (10)  
*Tulane (8/30) - 43 A and 14 D*  
*Missouri (8/30) - 45 A and 21 D*  
*vs. Siena (9/5) - 45 A and 12 D*  
*vs. American (9/6) - 40 A and 13 D*  
*at Texas A&M (9/6) - 33 A and 11 D*  
*at Wisconsin (9/13) - 39 A and 14 D*  
*TCU (10/31) - 49 A and 12 D*  
*at UNLV (11/6) - 50 A and 17 D*  
*at Utah (11/14) - 55 A and 10 D*  
*CSU (11/20) - 50 A and 14 D*

Bryn Porter (8)  
*Missouri (8/30) - 19 K and 16 D*  
*vs. Siena (9/5) - 15 K and 11 D*  
*vs. American (9/6) - 16 K and 10 D*  
*vs. Boise State (9/12) - 17 K and 13 D*  
*New Mexico (11/1) - 12 K and 11 D*  
*at UNLV (11/6) - 12 K and 16 D*  
*at Utah (11/14) - 13 K and 14 D*  
*CSU (11/20) - 11 K and 13 D*

Kayla Walker (7)  
*vs. Boise State (9/12) - 13 K and 10 D*  
*at Wisconsin (9/13) - 13 K and 10 D*  
*San Diego St. (10/9) - 13 K and 14 D*  
*TCU (10/31) - 16 K and 11 D*  
*at UNLV (11/6) - 21 K and 11 D*  
*at Utah (11/14) - 20 K and 14 D*  
*Wyoming (11/22) - 10 K and 12 D*

Rachel Dyer (1)  
*CSU (11/20) - 14 K and 10 B*

Malia Marquardt (1)  
*Missouri (8/30) - 12 K and 10 D*

**BYU Cougar Volleyball 2009**  
**BYU Cougars Combined Team Statistics (as of Oct 03, 2009)**  
**All matches**

Overall record: 8-7 Conf: 3-1 Home: 5-1 Away: 1-4 Neutral: 2-2

#	Player	sp	Attack				pct	Set		Serve			Dig			Blocking					points	
			k	k/s	e	ta		a	a/s	sa	se	sa/s	re	dig	dig/s	bs	ba	total	blk/s	be		bhe
8	BOAZ, Marisa	2	1	0.50	0	2	.500	0	0.00	0	0	0.00	0	1	0.50	0	1	1	0.50	0	0	-
9	ROGERS, Kiana	58	34	0.59	8	82	.317	546	9.41	8	17	0.14	1	130	2.24	5	48	53	0.91	4	9	-
15	WARNER, Nicole	59	93	1.58	30	239	.264	3	0.05	6	13	0.10	0	19	0.32	5	70	75	1.27	12	0	-
7	MEASOM, Christina	59	128	2.17	52	314	.242	6	0.10	1	7	0.02	1	10	0.17	1	59	60	1.02	2	2	-
12	WALKER, Kayla	59	244	4.14	96	647	.229	4	0.07	4	10	0.07	10	121	2.05	4	44	48	0.81	4	0	-
20	SPEREDON THURST	48	81	1.69	37	226	.195	2	0.04	0	1	0.00	4	11	0.23	2	27	29	0.60	2	2	-
14	CARPENTER, Christie	54	86	1.59	56	300	.100	4	0.07	9	10	0.17	7	39	0.72	3	36	39	0.72	7	0	-
11	LAKE WRIGHT, Meliss	59	1	0.02	0	13	.077	26	0.44	6	11	0.10	7	140	2.37	0	0	0	0.00	0	1	-
10	PHILLIPS, Camilla	25	26	1.04	21	92	.054	1	0.04	0	1	0.00	1	9	0.36	0	13	13	0.52	0	2	-
17	HONKA, Courtney	1	0	0.00	0	0	.000	0	0.00	0	0	0.00	0	0	0.00	0	0	0	0.00	0	0	-
2	HANNEMANN, Heather	8	0	0.00	0	1	.000	13	1.62	2	2	0.25	0	2	0.25	0	1	1	0.12	0	1	-
13	SAGERS, Lauren	1	0	0.00	0	0	.000	0	0.00	0	0	0.00	0	0	0.00	0	1	1	1.00	0	0	-
16	LAU, Stephanie	7	2	0.29	5	27	-.111	0	0.00	0	0	0.00	1	2	0.29	0	0	0	0.00	0	0	-
1	LLOYD SORENSEN, M	59	1	0.02	4	15	-.200	18	0.31	7	22	0.12	22	192	3.25	0	0	0	0.00	0	1	-
6	GOODSELL, Chelsea	49	0	0.00	4	11	-.364	9	0.18	9	16	0.18	9	94	1.92	0	0	0	0.00	0	0	-
	BYU COUGARS	59	697	11.81	313	1969	.195	655	11.10	52	110	0.88	65	770	13.05	20	300	170.0	2.88	31	18	-
	Opponents	59	736	12.47	395	2029	.168	704	11.93	65	111	1.10	52	841	14.25	20	209	124.5	2.11	31	14	-

Team Statistics	BY	OPP
<b>ATTACK</b>		
Kills	697	736
Errors	313	395
Total Attacks	1969	2029
Attack Pct	.195	.168
Kills/Set	11.8	12.5
<b>SET</b>		
Assists	655	704
Assists/Set	11.1	11.9
<b>SERVE</b>		
Aces	52	65
Errors	110	111
Aces/Set	0.9	1.1
<b>SERVE RECEPTIONS</b>		
Errors	65	52
Errors/Set	1.1	0.9
<b>DEFENSE</b>		
Digs	770	841
Digs/Set	13.1	14.3
<b>BLOCKING</b>		
Block Solo	20	20
Block Assist	300	209
Total Blocks	170.0	124.5
Blocks/Set	2.9	2.1
Block Errors	31	31
Ball handling errors	18	14
<b>ATTENDANCE</b>		
Total	4758	9826
Dates/Avg Per Date	6/793	5/1965
Neutral site #/Avg	4/61	
Current win streak	2	-
Home win streak	3	-

Date	Opponent	Score	Score by set	Att.
+Aug 28	vs Ole Miss	W 3-0	26-24,25-20,25-22	0
+Aug 29	vs Texas State	W 3-0	25-17,25-22,25-16	0
+Aug 29	at Missouri	L 1-3	21-25,25-15,20-25,12-25	1621
Sep 01	at Utah State	L 2-3	18-25,25-21,15-25,28-26,11-15	1557
Sep 04	CAL POLY	W 3-2	25-18,25-22,22-25,16-25,15-13	1145
Sep 05	WEBER STATE	W 3-0	25-19,25-20,25-17	0
Sep 05	#23 KANSAS STATE	L 2-3	21-25,25-22,19-25,25-17,11-15	571
Sep 10	vs #8 UCLA	L 1-3	16-25,11-25,25-23,15-25	0
Sep 11	at #5 Nebraska	L 1-3	25-18,21-25,10-25,21-25	4124
Sep 12	vs Virginia	L 1-3	15-25,27-29,25-18,17-25	244
*Sep 17	SDSU AZTECS	W 3-2	25-19,21-25,24-26,25-22,15-7	1377
*Sep 19	AIR FORCE FALCONS	W 3-0	25-12,25-23,25-11	846
*Sep 25	at Utah	L 2-3	25-19,19-25,29-27,29-31,10-15	1747
Sep 29	NDSU BISON	W 3-0	25-20,26-24,26-24	819
*10-03-09	at LV	W 3-0	25-17,25-17,25-21	777

+ Tiger Invitational  
^ Nike Classic

Record in 3-set matches:6-0 • Record in 4-set matches:0-4 • Record in 5-set matches:2-3