



BYU Women's Volleyball

Weekly Release #9 - Oct. 23

THIS WEEK'S ACTION:

BYU Cougars host in-state rival Utah
Provo, Utah • Smith Fieldhouse (5,500) • Oct. 23 • 7 p.m. MT
BYUTV will broadcast the match LIVE.
GameTracker available at www.byucougars.com

DESERET FIRST DUEL

UTAH LEADS WITH ONE MATCH (9/25/09, 3-2)

FRIDAY, OCT. 23

7 P.M. – UTAH @ BYU



Cougars Open Second Half of MWC With In-State Rival Utah

PROVO, Utah (Oct. 20, 2009) – After going 5-3 in the first half of Mountain West Conference play, the BYU women's volleyball team (10-9, 5-3) will face in-state rival Utah (13-7, 6-2) at the Smith Fieldhouse Friday at 7 p.m.

"The first round of the Deseret Duel was a very exciting hard-fought battle and an extremely tight match at the Crimson Court," said BYU head coach Shay Goulding. "We expect nothing different at the Fieldhouse this Friday except that we certainly will have the home court advantage."

BYU leads the all-time series 64-24 with Utah winning the last three matches.

In front of a record-high 1,747 fans at the Crimson Court the Cougars battled a close match with the Utes, falling in five sets. Senior rightside hitter Kayla Walker led the team that night with 19 kills and 11 digs, her fourth double-double of the season. Camilla Phillips had eight kills while Kiana Rogers posted 41 assists. Morgan Lloyd Sorensen held up the back row with 24 digs, tying her career high.

"We look forward to our fans filling the gym, cheering us on, and helping us defend the Smith Fieldhouse," said Goulding. "The team is excited and ready to welcome Utah to our court. Like any other match, the focus will remain on aggressive serving and passing. With solid execution of these two skills, our blocking and hitting percentages will take care of themselves."

The team has invited all Alumni back to Friday's match and encourage all to come partake of a great volleyball match from the Alumni reserved section and a reception to follow the match.

The last time out the Cougars split road games, falling to MWC-undefeated Colorado State at their home court Thursday in three games and beating Wyoming in five on Saturday.

Freshman Nicole Warner led the Cougars in kills with nine against the Rams, hitting .667, a career-high in hitting percentage. Christie Carpenter added eight kills while setter Kiana Rogers posted 26 assists and seven digs. Senior Morgan Lloyd Sorensen tallied 10 digs, her 13th double-digit dig night of the season.

Against the Cowgirls the Cougars had three spikers in double-digits with Christie Carpenter leading the way with a career-high 21, Christina Measom with 13, hitting .310 and Nicole Warner with 12 (career-high tied), hitting .370. On the defensive side of the ball Morgan Lloyd Sorensen led the team with 18 digs, accompanied by Melissa Lake Wright with 12.

All fans are encouraged to wear blue to cheer on their Cougars Friday night. Next the Cougars will host Utah Valley University Tuesday, Oct. 27 at 7 p.m.

QUICK REFERENCE

BYU 2009 Record: 10-9

BYU MWC Record: 5-3

2009 BYU WOMEN'S VOLLEYBALL SCHEDULE

Date	Opponent	Site	Time/Result
Aug. 28-29	Tiger Invitational	Columbia, MO	
Aug. 28	vs. Ole Miss		W (3-0)
Aug. 29	vs. Texas State		W (3-0)
	@ Missouri		L (1-3)
Sept. 1	@ Utah State	Logan, UT	L (2-3)
Sept. 4-5	BYU Nike Classic	PROVO, UT	
Sept. 4	Cal Poly		W (3-2)
Sept. 5	Weber State		W (3-0)
	Kansas State		L (2-3)
Sept. 10-12	Ameritas Players Challenge	Lincoln, NE	
Sept. 10	vs. UCLA		L (1-3)
Sept. 11	@ Nebraska		L (1-3)
Sept. 12	vs. Virginia		L (1-3)
Sept. 17	San Diego State*	PROVO, UT	W (3-2)
Sept. 19	Air Force*	PROVO, UT	W (3-0)
Sept. 25	@ Utah*	SLC, UT	L (2-3)
Sept. 29	North Dakota State	PROVO, UT	W (3-0)
Oct. 3	@ UNLV*	Las Vegas, NV	W (3-0)
Oct. 8	New Mexico*	PROVO, UT	W (3-0)
Oct. 10	TCU*	PROVO, UT	L (0-3)
Oct. 15	@ Colorado State*	Ft. Collins, CO	L (0-3)
Oct. 17	@ Wyoming*	Laramie, WY	W (3-2)
Oct. 23	Utah*	PROVO, UT	7 p.m.
Oct. 27	Utah Valley Univ.	PROVO, UT	7 p.m.
Oct. 29	UNLV*	PROVO, UT	7 p.m.
Nov. 5	@ TCU*	Fort Worth, TX	7 p.m.
Nov. 7	@ New Mexico	Albuquerque	1 p.m.
Nov. 12	Wyoming*	PROVO, UT	7 p.m.
Nov. 14	Colorado State*	PROVO, UT	7 p.m.
Nov. 19	@ Air Force*	USAFA, CO	7 p.m.
Nov. 21	@ San Diego State*	San Diego, CA	1 p.m.
Nov. 28	@ Saint Mary's	Moraga, CA	7 p.m.
Dec. 4-5	NCAA First/Second Rounds		TBA
Dec. 11-12	NCAA Regionals		TBA
Dec. 17-19	NCAA Final Four	Tampa Bay, FL	TBA

* denotes Mountain West Conference matches.

** all times listed are local to site and subject to change.

www.byucougars.com

32 National Tournament Berths • 24 Conference Championships • 1,041 Wins and 40 Years of Volleyball Tradition

2009 NUMERICAL ROSTER

No.	Name	Pos.	Ht.	Cl.	Exp.	Hometown (Previous School)
1	Morgan Lloyd Sorensen	L/DS	5-4	SR	1L	Pleasant Grove, Utah (Salt Lake CC)
2	Heather Hannemann	S	5-8	FR	HS	Alpine, Utah (Lone Peak HS)
3	Courtney Donaldson	RS	6-0	R-FR	HS	LaVerne, California (Bonita HS)
4	Kathryn LeCheminant	MB	6-2	R-FR	HS	Layton, Utah (Layton HS)
5	Brooke Taulii Soon	S	5-11	SO	RS	Torrance, Calif. (North Torrance HS)
6	Chelsea Goodsell	L	5-2	SO	1L	Laguna Niguel, Calif. (Sacramento State)
7	Christina Measom	MB	6-0	JR	2L	Lehi, Utah (Lehi HS)
8	Marisa Boaz	MB	6-1	SR	3L	Sandy, Utah (Brighton HS)
9	Kiana Rogers	S	5-11	JR	2L	Placerville, Calif. (Union Mine HS)
10	Camilla Phillips	OH	5-11	JR	TR	Jordan, Utah (Salt Lake CC)
11	Melissa Lake Wright	L/DS	5-5	JR	1L	Palm Springs, Calif. (Palm Springs HS)
12	Kayla Walker	RS	6-5	SR	3L	Kaysville, Utah (Pepperdine)
13	Lauren Sagers	RS	6-0	FR	HS	Las Vegas, Nev. (Centennial HS)
14	Christie Carpenter	OH	6-1	SO	1L	Cedar Hills, Utah (Lone Peak HS)
15	Nicole Warner	MB	6-2	FR	RS	Rigby, Idaho (Rigby HS)
16	Stephanie Lau	DS/OH	5-10	SR	2L	Edmonds, Wash. (Kamiak HS)
17	Courtney Honka	L/DS	5-8	FR	HS	Porterville, Calif. (Monache HS)
20	Casey Speredon Thurston	OH	6-1	SO	1L	West Valley City, Utah (Granger HS)

2009 ALPHABETIC ROSTER

Name	No.	Pos.
Marisa Boaz	8	MB
Christie Carpenter	14	OH
Courtney Donaldson	3	RS
Chelsea Goodsell	6	L
Heather Hanneman	2	S
Courtney Honka	17	L/DS
Melissa Lake Wright	11	L/DS
Stephanie Lau	16	DS
Kathryn LeCheminant	4	MB
Morgan Lloyd Sorensen	1	L
Christina Measom	7	MB
Camilla Phillips	10	OH
Kiana Rogers	9	S
Lauren Sagers	13	RS
Casey Speredon Thurston	20	OH
Brooke Taulii Soon	5	S
Kayla Walker	12	RS
Nicole Warner	15	MB

Head Coach: Shay Goulding (BYU 1998) – Second Season

Assistant Coaches: Shawn Olmstead; Mike Wilton

Trainer: Gaye Merrill

ROSTER BREAKDOWN

Returning Starters (4)

Name	Pos.	Ht.	Cl.	Pct.	KPG	DPG	BPG
Melissa Lake Wright	L/DS	5-5	JR	-.091	0.03	3.56	0.00
Christina Measom	MB	6-0	JR	.154	1.78	0.37	0.65
Kiana Rogers	S	5-11	JR	.201	10.14*	2.45	0.42
Kayla Walker	RS	6-5	SR	.223	3.03	2.10	0.91

* Assists per game

Starters Lost (3)

Rachel Dyer	MB	6-1	--	.316	2.32	0.81	1.09
Ashton Hansen Hosford	MB	6-4	--	.261	1.46	0.12	1.29
Bryn Porter	OH	5-10	--	.135	2.87	2.14	0.47

Returning Letterwinners (8)

Name	Pos.	Ht.	Cl.	Pct.	KPG	DPG	BPG
Marisa Boaz	RS	6-1	SR	-.250	0.00	0.25	1.00
Stephanie Lau	OH/DS	5-10	SR	.250	0.40	0.50	0.00
Melissa Lake Wright	L/DS	5-5	JR	-.091	0.03	3.56	0.00
Morgan Lloyd Sorensen	L/DS	5-4	SR	.500	0.03	2.29	0.00
Christina Measom	MB	6-0	JR	.154	1.78	0.37	0.65
Kiana Rogers	S	5-11	JR	.201	10.14*	2.45	0.42
Casey Speredon Thurston	OH	6-1	SO	.208	1.38	0.08	0.08
Kayla Walker	RS	6-5	SR	.223	3.03	2.10	0.91

* Assists per game

Letterwinners Lost (4)

Rachel Dyer	MB	6-1	--	.316	2.32	0.81	1.09
Ashton Hansen Hosford	MB	6-4	--	.261	1.46	0.12	1.29
Malia Marquardt	RS	6-1	--	.217	1.93	1.24	1.05
Bryn Porter	OH	5-10	--	.135	2.87	2.14	0.47

Redshirts Returning (4)

Name	Pos.	Ht.	Cl.	Pct.	KPG	DPG	BPG
Christie Carpenter*	OH	6-1	SO	.065	1.60	1.30	0.40
Chelsea Goodsell**	L	5-2	SO	--	--	--	--
Brooke Taulii Soon***	S	5-11	SO	--	--	--	--
Nicole Warner	MB	6-2	FR	--	--	--	--

* Stats are from freshman season

** Played one year at Sac. St. before transferring and redshirting last year

*** Redshirted in 2007 and served as team manager in 2008

Others Lost (1)

Name	Pos.	Ht.	Cl.	Pct.	KPG	DPG	BPG
Markelle Malone	S	5-11	FR	--	--	--	--

Newcomers (6)

Name	Pos.	Ht.	Cl.
Courtney Donaldson	RS	6-0	FR
Heather Hannemann	S	5-8	FR
Courtney Honka	L/DS	5-8	FR
Kathryn LeCheminant	MB	6-2	FR
Camilla Phillips	OH	5-11	JR
Lauren Sagers	RS	6-0	FR

Class Breakdown

SENIOR (4)

Marisa Boaz
Stephanie Lau
Morgan Lloyd Sorensen
Kayla Walker

SOPHOMORE (4)

Christie Carpenter
Chelsea Goodsell
Casey Speredon Thurston
Brooke Taulii Soon

JUNIOR (4)

Melissa Lake Wright
Christina Measom
Kiana Rogers
Camilla Phillips

FRESHMAN (6)

Courtney Donaldson
Heather Hanneman
Courtney Honka
Kathryn LeCheminant
Lauren Sagers
Nicole Warner

UTAH

GENERAL INFO

Location: Salt Lake City, Utah
 Enrollment: 29,251
 Nickname: Utes
 Colors: Crimson and White
 Facility: Crimson Court (2,000)
 Conference: Mountain West

VOLLEYBALL INFO

Series Record: BYU leads, 64-24
 Last Meeting: Sept. 25, 2009
 Result: Utah (3-2)
 Head Coach: Beth Launiere (Aquinas '85)
 Assistant Coaches: Heather Olmstead, Brian Doyon
 Overall Record (Years): 391-212 (19)
 Record at School (Years): Same
 2008 Overall Record: 26-6

2008 Conference Record: 14-2 (1st)
 2008 Final Ranking/Postseason Finish: No. 16/
 NCAA Regional Semifinals

PLAYER INFO

Starters Returning/Lost: 3 + libero /3
 Letterwinners Returning/Lost: 10/4

2009 Utah Women's Volleyball Roster

No.	Name	Ht.	Pos.	Cl.	Exp.	Hometown / Previous School
1	McKenzie Odale	S	5-11	Fr.	HS	Boise, Idaho (Eagle HS)
2	Stephanie Neeley	S	5-10	Jr.	2L	Saugus, Calif. (Saugus HS)
3	Miranda Bradshaw	MB	6-3	R-Fr.	HS	Elkridge, Utah (Payson HS)
4	Corinne Crump	L	5-7	So.	1L	Sandy, Utah (Alta HS)
5	Brooke McAlister	OH	6-0	Fr.	HS	Pleasant Grove, Utah (Pleasant Grove HS)
6	Chelsey Sandberg	MB	6-1	Sr.	3L	West Jordan, Utah (Copper Hills HS)
7	Jennifer Lanting	OPP	6-6	So.	1L	Corcoran, Calif. (Central V. Christian HS)
9	Danielle Killpack	MB	6-3	So.	1L	Idaho Falls, Idaho (Idaho Falls HS)
10	Karolina Bartkowiak	OPP	6-2	Jr.	2L	Aurora, Ill. (West Aurora HS)
11	Keisha Fisher	L	5-7	Jr.	2L	Ririe, Idaho (Skyline HS)
13	Cinthia Silva	OH	5-10	Sr.	1L	San Paulo, Brazil (Salt Lake CC)
14	Abby Simmons	S	6-0	So.	1L	Phoenix, Ariz. (Desert Vista HS)
15	Natalie Nichols	OH	5-10	Fr.	HS	Salt Lake City, Utah (Olympus HS)
16	Sarah Hibbert	OH	6-1	So.	1L	Anchorage, Alaska (South Anchorage HS)

Last Time Out

FORT COLLINS, Colo. - Sophomore setter Abby Simmons turned in her fourth career double-double but the University of Utah volleyball team dropped a three-set match (14-25, 13-25, 15-25) Saturday against Colorado State at Moby Arena.

Utah (13-7, 6-2 MWC) is now 20-2 in its last 22 Mountain West Conference matches. The Utes were outthit .382 to .078 for the match and were at a 70-40 disadvantage in digs.

"I thought we competed at times," head coach Beth Launiere said. "But for the most part, [CSU] dominated or had control of the match. We weren't ever able to get into the match. We just didn't get enough kills. We did a lot of good things but we just didn't have enough offense at the end of the match."

Simmons was second on the team with 12 digs and she also distributed a team-high 11 assists. The Phoenix, Ariz., native now had four career double-doubles with three coming this season. Junior setter Stephanie Neeley chipped in eight assists.

Five different Utes had at least four kills, led by five from Sarah Hibbert. Danielle Killpack, Chelsey Sandberg, Cinthia Silva and Karolina Bartkowiak each had four kills apiece

In the back row, junior libero Keisha Fisher dug up a team-high 14 Ram attack attempts. The Ririe, Idaho was credited with her first kill of the season in the second set of the match and her first since the Deseret First Duel match at BYU on Oct. 17, 2008.

Bartkowiak and Killpack were Utah's leading blockers. Bartkowiak led the way with four blocks while Killpack turned in three. As a team, the Utes were slightly outblocked by the Rams, 6 to 5.5.

The first set was tied at two points apiece before the Rams put together a 9-1 to take a commanding 11-3 lead. The Utes managed to cut their deficit to four points at 14-10 following a 4-1 run but CSU built its lead up to 11 points en route to a 25-14 first-set win. Three different Utah players, including Bartkowiak, Silva and Sandberg had at least two kills in the

set. Sandberg posted a team-high three kills to help the Utes hit .214 in the set but could not match the Ram attack, which managed to hit .536. The Utes dropped to 6-6 after losing the first set of a match this season.

"CSU started off on fire," Launiere said. "We didn't have an answer for Danielle Minch. She had a lot of kills in the first set so that got us in trouble early. I thought we were able to slow them down a little bit as the match went on but we just weren't able to get enough kills."

CSU took five of the first seven points in the second set before Utah scored four consecutive times to take a 6-5 advantage, the Utes' first lead since a 1-0 edge to start the match. Unfortunately, the Rams responded with a 4-0 spurt to take a 9-6 edge. CSU extended its advantage to 11 points as it went on a 9-1 run to take a 22-11 lead and would eventually take a 25-12 second-set victory. The Utes were outthit .457 to .048 in the set while Bartkowiak, Killpack and Hibbert each recorded two kills apiece. Utah is now 0-4 this season after dropping the first two sets of a match.

The Rams jumped out to a 4-2 lead at the start of the third frame but the Utes fought back to force the first tie of the set at eight points apiece. CSU managed to climb out to its largest lead of the set at 18-12 margin thanks to six consecutive points. The Rams put together a 6-0 run near the end of the set en route to a 25-15 match-clinching win. Hibbert came up with two more kills but the Rams managed to outthit the Utes, .234 to .022, for the set. Utah did come up with a 3.5 blocks in the set, compared to just two for CSU. Killpack came up with all three of her blocks in the set during the final set.

Colorado State (16-3, 8-0 MWC) was led by a 19-kill, three-dig, and two-block performance by Minch. She took 23 swings with four errors for a .469 hitting percentage.

"We just have to get back into the gym for practice and work hard," Launiere said. "We're still trying to figure this out. We're still playing pretty good volleyball and the attitude [of the team] is still good so we just have to take a loss and learn from it."

COMPARING THE UTES AND COUGARS

	KPS	%	APS	SAPS	DPS	BPS
UTAH	12.5	.180	11.4	1.2	15.2	2.7
BYU	12.0	.199	11.2	0.9	13.0	2.8

2009 QUICK FACTS

UNIVERSITY INFORMATION

Location.....Provo, Utah 84602
 Elevation..... 4,553 feet
 Enrollment..... 33,278 (Daytime)
 Founded.....October 15, 1875
 Owned ..Church of Jesus Christ of Latter-day Saints
 Nickname..... Cougars
 Mascot..... Cosmo
 Colors.....Dark blue, white and tan
 Conference..... Mountain West
 Arena..... Smith Fieldhouse (5,000) wood floor
 BYU President .. Cecil O. Samuelson (Utah, 1970)
 Athletics Director..... Tom Holmoe (BYU, 1983)

VOLLEYBALL INFORMATION

Head Coach..... Shay Goulding (BYU, 1998)
 Office Phone..... 801-422-3387
 Assistant Coaches..... Shawn Olmstead
 Mike Wilton
 Chris McGown
 Goulding Record at BYU:..... 24-21
 Goulding Career Record..... Same
 BYU's All-Time Record:..... 1,041-303-5 (.777)
 2008 Record..... 14-12
 2008 MWC Record..... 7-9 (6th)
 2008 NCAA..... None
 2008 Final Ranking..... N/A
 Starters Returning/Lost..... 4/3
 Letterwinners Returning/Lost..... 8/4
 Other Players Returning/Lost..... 4*/1
 Newcomers..... 6
 * Brooke Taualii Soon redshirted in 2007 before
 serving as the team manager last season

ATHLETIC COMMUNICATIONS

Primary Volleyball Contact..... Jackie Johnson
 Phone..... 801-422-8999
 Cell..... 520-227-7720
 E-mail..... wvolleyball_sid@byu.edu
 Secondary Volleyball Contact..... Kyle Chilton
 Phone..... 801-422-4909
 E-mail..... kyle_chilton@byu.edu
 Homepage..... www.byucougars.com
 Pressrow Phone..... 801-422-0358
 Mailing Address ..BYU Athletic Communications
 30 Smith Fieldhouse
 Provo, Utah 84602



Weekly Notes:

Last Time Out: Cougars Split Road Games

The Cougars fell to Mountain West Conference undefeated Colorado State at their home court Thursday in three games. Freshman Nicole Warner led the Cougars in kills with nine, hitting .667, a career-high in hitting percentage. Christie Carpenter added eight kills while setter Kiana Rogers posted 26 assists and seven digs. Senior Morgan Lloyd Sorensen tallied 10 digs, her 13th double-digit dig night of the season. After dropping one to CSU, the Cougars did come out with a five-set road win against Wyoming on Oct. 17. The Cougars had three spikers in double-digits with Christie Carpenter leading the way with a career-high 21, Christina Measom with 13, hitting .310 and Nicole Warner with 12 (career-high tied), hitting .370. On the defensive side of the ball Morgan Lloyd Sorensen led the team with 18 digs, accompanied by Melissa Lake Wright with 12.

BYU Blocks: Nation's Best

Boasting an average of 2.82 blocks per set, the Cougars are currently No. 13 in the nation. BYU also leads the Mountain West Conference in blocks.

UNM Defeats Cougars at Home

Despite a final surge to keep the game alive in the third set, the BYU women's volleyball team fell short and lost to the visiting TCU Horned Frogs (25-27, 23-25, 22-25) Oct. 10 at the Smith Fieldhouse in front of 1,027 fans, the second-largest crowd of the season. The Cougars were without the services of senior team captain Kayla Walker who sprained an ankle in practice on Friday. For the first time this season, three Cougars scored in double figures for kills as Christie Carpenter had a season and career-high 15 kills on the night while Christina Measom and Nicole Warner each registered 10. Carpenter also contributed a season and career-high 10 digs, allowing her to earn her first double-double of the season. Camilla Phillips earned a .333 hitting percentage to lead the team in the third set while Carpenter tallied a .308 mark.

Three-Straight 3-0 Cougar Wins

BYU hosted North Dakota State on Sept. 29 to break the seven-game Bison win streak in three sets. Kayla Walker recorded her fifth double-double with 16 kills and 13 digs. Kiana Rogers also had a double-double, racking up 38 assists and 16 digs, a season-high. Warner finished with a career-high .625 hitting percentage on her way to 11 kills and five blocks. The Cougars also defeated conference foe, UNLV in Las Vegas Saturday, beating the Rebels in three quick sets. Walker led the Cougars with 14 kills, nine digs and seven blocks – including two solo blocks on the afternoon. Christina Measom, Christie Carpenter and Camilla Phillips each added six kills while Nicole Warner had five. Setter Kiana Rogers had 30 assists and nine digs while Morgan Lloyd Sorensen had 10 digs. On Oct. 8 BYU hosted New Mexico, beating the Lobos in three sound sets. BYU was led by Kayla Walker who had 14 kills followed by Christie Carpenter and Christina Measom with nine kills each. Carpenter had a career high hitting percentage with .350 as well a career-best nine digs. Measom has her season best hitting percentage with .533.

Cougars Battle Utes, Fall in Five

At the Crimson Court on the campus of the University of Utah in front of a record-high 1,747 fans, the Utes crept by the Cougars in five. Senior rightside hitter Kayla Walker came out with 19 kills and 11 digs on the night, her fourth double-double of the season. Camilla Phillips had a career-high eight kills while Kiana Rogers posted 41 assists. Morgan Lloyd Sorensen held up the back row with 21 digs as Christina Measom had a career-high 11 blocks, the highest for any Cougar this season.

Walker Named MWC Player of the Week Sept. 21

Kayla Walker's presence was invaluable to the Cougars against SDSU and Air Force, leading the Cougars in kills both games. She tallied a career-high 32 kills against SDSU while maintaining a .500 hitting percentage. She took a total of 58 swings and only had three errors. Her 32 kills is the third-highest total in MWC league-match history. Even against Air Force she posted 10 kills while being on the sideline for most of set two. The Cougars were tied up in set two with many subs in for the starters. Walker subbed in for the last two points – scoring the final points of the set. The match against SDSU marked her third double-double of the 2009 season.

BYU Opens MWC Conference Play 2-0

Led by senior Kayla Walker tallying 42 kills in two games (32 against SDSU and 10 against Air Force), the Cougars beat out both teams at the Smith Fieldhouse to open the MWC season 2-0, the first 2-0 conference start since 2006.

2009 QUICK FACTS

UNIVERSITY INFORMATION

Location Provo, Utah 84602
 Elevation 4,553 feet
 Enrollment 33,278 (Daytime)
 Founded October 15, 1875
 Owned . . Church of Jesus Christ of Latter-day Saints
 Nickname Cougars
 Mascot Cosmo
 Colors Dark blue, white and tan
 Conference Mountain West
 Arena Smith Fieldhouse (5,000) wood floor
 BYU President . . Cecil O. Samuelson (Utah, 1970)
 Athletics Director Tom Holmoe (BYU, 1983)

VOLLEYBALL INFORMATION

Head Coach Shay Goulding (BYU, 1998)
 Office Phone 801-422-3387
 Assistant Coaches Shawn Olmstead
 Mike Wilton
 Chris McGown
 Goulding Record at BYU: 24-21
 Goulding Career Record Same
 BYU's All-Time Record: 1,041-303-5 (.777)
 2008 Record 14-12
 2008 MWC Record 7-9 (6th)
 2008 NCAA None
 2008 Final Ranking N/A
 Starters Returning/Lost 4/3
 Letterwinners Returning/Lost 8/4
 Other Players Returning/Lost 4*/1
 Newcomers 6
 * Brooke Taulii Soon redshirted in 2007 before
 serving as the team manager last season

ATHLETIC COMMUNICATIONS

Primary Volleyball Contact Jackie Johnson
 Phone 801-422-8999
 Cell 520-227-7720
 E-mail wvolleyball_sid@byu.edu
 Secondary Volleyball Contact Kyle Chilton
 Phone 801-422-4909
 E-mail kyle_chilton@byu.edu
 Homepage www.byucougars.com
 Pressrow Phone 801-422-0358
 Mailing Address . .BYU Athletic Communications
 30 Smith Fieldhouse
 Provo, Utah 84602



Weekly Notes Cont...

Ameritas Players Challenge

The Cougars lost to No. 8 UCLA, No. 5 Nebraska and Virginia in the Ameritas Players Challenge last week, all in four sets. Kayla Walker led the Cougars in kills, being the only Cougar named to the All-Tournament team. She tallied 17 kills against Virginia, 14 kills against Nebraska and 15 against UCLA. Some of the bright spots in the tournament included the team's hitting percentage of .680 in the first set against No. 5 Nebraska. Also in the UCLA match the team posted 16 team blocks to the Bruins' six.

BYU Places Second in Nike Classic

BYU downed Weber State in three in the second match of the Nike Classic, but brought Cal Poly and Kansas State to five sets, dropping one to Kansas State – the winner of the tournament. Despite a second-place finish in the Nike Classic, two Cougars, Kayla Walker and Christie Carpenter, were named to the all-tournament team.

Walker Finds Career Highs at Utah State

Traveling to in-state rival Utah State, the Cougars fell to the Aggies in five sets on Tuesday, Sept. 1 in front of 1,557 USU fans. Despite the loss, senior rightside hitter, Kayla Walker, posted a season- and career-high 25 kills in addition to nine digs. She hit at .288 percent. Christina Measom added 13 kills hitting at an impressive .440, also putting up three blocks. Christie Carpenter tallied 11 kills, two assists, one dig and two blocks. Nicole Warner also filled up the stat sheet, leading the team with five blocks, two service aces and also adding six kills on the night. Senior setter Kiana Rogers had 54 of 58 assists in the match, also adding three kills and eight digs. Morgan Lloyd Sorensen topped the dig list with 11, with one service ace.

BYU Second at the Tiger Invitational

The Cougars finished second in their season opener in Missouri, finishing off Ole Miss and Texas State in three sets and falling to host Missouri in four. Senior rightside hitter, Kayla Walker and junior middle blocker Christina Measom both earned all-tournament honors. Walker averaged 3.70 kills and 1.9 digs per set while Measom tallied 1.90 kills and 0.90 blocks while hitting .350.

Cougars Picked To Finish Fourth In MWC

A voting panel including the nine Mountain West Conference head coaches and selected media has picked the BYU women's volleyball team to finish fourth in the MWC this season with a total of 96 points and two first-place votes. Defending league-champion Utah was tabbed as the favorite to win the 2009 regular-season title while Colorado State was selected a close second and New Mexico was slotted just above BYU in third.

Transfer Players

With Shay Goulding at the helm of the program, four players decided to put on a Cougar uniform. Morgan Lloyd Sorensen and Camilla Phillips transferred from Salt Lake Community College while Chelsea Goodsell joins us from Sacramento State and Kayla Walker from Pepperdine. Goodsell and Phillips joined the Cougars this season.

Preseason All-MWC

Senior rightside hitter Kayla Walker was named to the Preseason All-MWC Team representing the Cougars. "Without a doubt, Kayla will be the athlete to watch this year in the Mountain West Conference," said Goulding. "She was a tremendous addition to our team last season, and I know she's only going to get better this year."

The Nation's Best ...

The Cougars' 1,041-302-5 all-time record entering the week makes them one of the best teams in the nation.

Here Comes The Bride

Four Cougars are sporting different last names this season after getting married in the offseason. Junior libero Melissa Lake Wright, senior libero Morgan Lloyd Sorensen, sophomore outside hitter Casey Speredon Thurston and Brooke Taulii Soon all tied the knot this past summer.

Geographic Breakdown

CALIFORNIA (6)	UTAH (9)
Courtney Donaldson	Marisa Boaz
Chelsea Goodsell	Christie Carpenter
Courtney Honka	Heather Hanneman
Melissa Lake Wright	Kathryn LeCheminant
Kiana Rogers	Morgan Lloyd Sorensen
Brooke Taulii Soon	Christina Measom
	Camilla Phillips
	Casey Speredon Thurston
	Kayla Walker
IDAHO (1)	WASHINGTON (1)
Nicole Warner	Stephanie Lau
NEVADA (1)	
Lauren Sagers	

2009 QUICK FACTS

UNIVERSITY INFORMATION

Location Provo, Utah 84602
 Elevation 4,553 feet
 Enrollment 33,278 (Daytime)
 Founded October 15, 1875
 Owned . . . Church of Jesus Christ of Latter-day Saints
 Nickname Cougars
 Mascot Cosmo
 Colors Dark blue, white and tan
 Conference Mountain West
 Arena Smith Fieldhouse (5,000) wood floor
 BYU President . . . Cecil O. Samuelson (Utah, 1970)
 Athletics Director Tom Holmoe (BYU, 1983)

VOLLEYBALL INFORMATION

Head Coach Shay Goulding (BYU, 1998)
 Office Phone 801-422-3387
 Assistant Coaches Shawn Olmstead
 Mike Wilton
 Chris McGown
 Goulding Record at BYU: 24-21
 Goulding Career Record Same
 BYU's All-Time Record: 1,041-303-5 (.777)
 2008 Record 14-12
 2008 MWC Record 7-9 (6th)
 2008 NCAA None
 2008 Final Ranking N/A
 Starters Returning/Lost 4/3
 Letterwinners Returning/Lost 8/4
 Other Players Returning/Lost 4*/1
 Newcomers 6
 * Brooke Tualii Soon redshirted in 2007 before
 serving as the team manager last season

ATHLETIC COMMUNICATIONS

Primary Volleyball Contact Jackie Johnson
 Phone 801-422-8999
 Cell 520-227-7720
 E-mail wvolleyball_sid@byu.edu
 Secondary Volleyball Contact Kyle Chilton
 Phone 801-422-4909
 E-mail kyle_chilton@byu.edu
 Homepage www.byucougars.com
 Pressrow Phone 801-422-0358
 Mailing Address BYU Athletic Communications
 30 Smith Fieldhouse
 Provo, Utah 84602



Double-Digit Kills:

Player	Total	Streak	High
Kayla Walker	15	10	32
Christina Measom	8	1	14
Nicole Warner	4	1	12
Christie Carpenter	3	1	21
Casey S. Thurston	1	0	13

20+ Kills:

Kayla Walker (3)
at Utah State (9/1) - 25
Cal Poly (9/4) - 22
San Diego St. (9/17) - 32

Christie Carpenter (1)
at Wyoming (10/17) - 21

30+ Kills:

Kayla Walker (1)
San Diego St. (9/17) - 32

Double-Digit Digs:

Player	Total	Streak	High
Morgan L. Sorensen	14	3	24
Melissa L. Wright	9	1	18
Kiana Rogers	6	0	16
Kayla Walker	5	0	17
Chelsea Goodsell	3	0	18

20+ Digs:

Morgan Lloyd Sorensen (4)
Kansas State (9/5) - 24
vs Virginia (9/12) - 21
San Diego St. (9/17) - 22
at Utah (9/25) - 21

Double-Digit Blocks:

Player	Total	Streak	High
Christina Measom	1	0	11

Double-Doubles:

Kiana Rogers (5)
vs Texas State (8/29) - 30 A and 12 D
Kansas State (9/5) - 48 A and 10 D
at Nebraska (9/11) - 39 A and 10 D
vs Virginia (9/12) - 41 A and 11 D
San Diego St. (9/17) - 55 A and 11 D

Kayla Walker (5)
vs Texas State (8/29) - 13 K and 11 D
Kansas State (9/5) - 14 K and 17 D
San Diego St. (9/17) - 32 K and 12 D
at Utah (9/25) - 19 K and 11 D
North Dakota State (9/29) - 16 K and 13 D

Christie Carpenter (1)
TCU (10/10) - 15 K and 10 D

Shay Goulding Head Women's Volleyball Coach

Shay Goulding enters her second season in 2009 as the head coach of the BYU women's volleyball program after starting out on Feb. 27, 2008.

COACHING CAREER

Goulding has 10 years of collegiate coaching experience, including five seasons as the head coach at SLCC where she cultivated the Bruins into one of the elite junior college programs in the country. A four-time NJCAA District I Coach of the Year and two-time American Volleyball Coaches Association West Region Coach of the Year, Goulding guided her SLCC teams to four NJCAA Tournament berths, placing as high as second. Her teams have earned a top-10 NJCAA ranking in each of the last four seasons.

Goulding's 2007 team earned a 44-2 record while finishing third at the NJCAA National Tournament with both losses coming against eventual national champion Western Nebraska. Goulding was honored with her second AVCA West Region Coach of the Year award and fourth District I honor and graduated her fifth All-American. The Bruins made their third consecutive national tournament appearance in 2006 while Goulding garnered her third District Coach of the Year accolade and graduated her third NJCAA All-American. After placing third in the Scenic West Athletic Conference, Goulding led the Bruins to the Region 18 Championship and a bid to the NJCAA Tournament, where the team finished in 11th place.

The 2005 Bruins also finished third in the SWAC and rallied to win the region and district championships. The Bruins ended the year ninth nationally after Goulding received her second District Coach of the Year award. In 2004, she guided the Bruins to a second-place finish at the NJCAA Tournament, producing her first two All-Americans in just her second season as head coach. As a result, she was named the District I and AVCA West Region Coach of the Year.

Prior to coaching at SLCC, Goulding spent one year at Solano Community College in Fairfield, Calif., and three years as part of the coaching staff at Utah State University. During her time as an assistant coach at USU, the Aggies went to the NCAA Tournament twice and were ranked in the top 25 in the country for two consecutive years. The Aggies' climb to the top included back-to-back 20-win seasons and 10 Big West All-Conference selections.

Goulding's coaching experience also includes coaching at the high school and club levels in both California and Utah for the past 10 years. Goulding has directed and coached at camps throughout the western states and has become known as a sound clinician and excellent teacher of motor skills. She was a featured speaker at the 2007 AVCA convention and has served as the Chairman of the AVCA Awards Committee since 2004.

PLAYING CAREER

Goulding played collegiate volleyball at Coastal Carolina University in South Carolina. A middle blocker/outside hitter, she was named team captain and the Chanticleers Most Valuable Player in 1994 while being selected to several all-tournament teams.

PERSONAL

A native of Visalia, Calif., Goulding received her Master of Education degree in Exercise Science with an emphasis in Motor Learning from Utah State University in 2001 and her Bachelor of Arts degree in History from BYU in 1998. She served a mission for The Church of Jesus Christ of Latter-day Saints to Santiago, Chile, from 1996-97.



GOULDING YEAR-BY-YEAR

- 2008 – Head Coach at BYU – 14-12
- 2007 – Head Coach at Salt Lake Community College – 44-2
- 2006 – Head Coach at Salt Lake Community College – 29-17
- 2005 – Head Coach at Salt Lake Community College – 34-14
- 2004 – Head Coach at Salt Lake Community College – 38-6
- 2003 – Head Coach at Salt Lake Community College – 24-21
- 2002 – Head Coach at Solano Community College – 19-13
- 2001 – Assistant Coach at Utah State – 20-11
- 2000 – Assistant Coach at Utah State – 22-10
- 1999 – Assistant Coach at Utah State – 14-12

GOULDING COACHING LEDGER

Head Coach

Year	School	Over.	Conf./Finish	National Finish
2008	BYU	14-12	7-9/6th	--
2007	SLCC	44-2	10-0/1st	3rd at NJCAA
2006	SLCC	29-17	7-5/3rd	11th at NJCAA
2005	SLCC	34-14	5-5/3rd	9th at NJCAA
2004	SLCC	38-6	9-1/1st	2nd at NJCAA
2003	SLCC	24-21	8-4/2nd	--
2002	SCC	19-13		

Kayla Walker • 6-5 • Rightside Hitter • Senior • Kaysville, UT

2008 – Junior: Played in every match and all but one set in her first season with the Cougars after transferring from Pepperdine ... began the year as an outside hitter but hit on the right-side in the last 10 matches ... named All-Mountain West Conference in just her first year in the league ... finished the year with 285 kills, 10 assists, 13 aces, 197 digs and 86 blocks ... was first on the team and sixth in the MWC with 3.03 kills per set ... also ranked fifth in the league in points per set (3.64) ... was third and fourth, respectively, in those categories in MWC play ... also ranked fifth on the team with 2.10 digs per set and fourth for the Cougars with 0.91 blocks per set ... tallied seven double-doubles on the year while posting double-digit kills in a team-high 17 matches and double-digit digs in nine contests ... was the only Cougar to tally at least 20 kills in a match, which she did twice ... led the team in kills 13 times, hitting percentage three times, digs once and blocks six times ... recorded a season-high 15 digs vs. Missouri ... earned Texas A&M Invitational All-Tournament honors after leading the Cougars in kills and hitting percentage on the weekend ... posted 18 kills vs. American while hitting a season-high .438 ... tallied her first double-double of the season with 13 kills and 10 digs against Boise State ... had 13 kills and 10 digs against then-No. 14 Wisconsin ... notched her third double-double with 13 kills and 14 digs against San Diego State ... had 16 kills and 11 digs against TCU ... tallied a career-high 21 kills with 11 digs at UNLV for her fifth double-double ... posted her sixth double-double with 20 kills and 14 digs at No. 23 Utah ... finished the season with 10 kills and 12 digs against Wyoming ... posted double-digit kills in the final five matches ... improved her season averages to 3.51 kps, 2.32 dps and 1.14 bps after moving to the rightside ... named Academic All-MWC.

Season Averages	
Sets played:	62
Kills per set:	4.16
Assists per set:	0.06
Service aces per set:	0.06
Digs per set:	2.00
Blocks per set:	0.82



KAYLA WALKER – 2009 Match-by-Match																		
Date	Opponent	ATTACK					Pct	SET			PASS			BLOCK			GEN	
		SP	K	E	TA	Pct		A	SA	SE	RE	DIG	BS	BA	BE	Total	BHE	
Aug 28, 2009	vs Ole Miss	3	13	5	38	.211	0	1	1	0	0	0	0	0	0	0	0	0
Aug 29, 2009	vs Texas State	3	13	1	31	.387	0	0	1	0	11	0	2	0	2	0	0	
Aug 29, 2009	at Missouri	4	11	8	38	.079	0	0	1	1	8	0	3	0	3	0	0	
Sep 01, 2009	at Utah State	5	25	10	52	.288	0	0	0	0	9	0	2	0	2	0	0	
Sep 04, 2009	Cal Poly	5	22	6	51	.314	0	0	0	0	7	1	7	0	8	0	0	
Sep 05, 2009	Weber State	3	9	3	20	.300	0	0	0	1	3	0	1	0	1	0	0	
Sep 05, 2009	No. 23 Kansas St.	5	14	8	64	.094	2	1	1	3	17	0	4	2	4	0	0	
Sep 10, 2009	vs No. 8 UCLA	4	15	8	51	.137	0	1	1	1	4	0	5	0	5	0	0	
Sep 11, 2009	at No. 5 Nebraska	4	14	9	43	.116	1	0	0	1	6	0	4	0	4	0	0	
Sep 12, 2009	vs Virginia	4	17	7	48	.208	0	0	1	0	9	0	0	1	0	0	0	
Sep 17, 2009	SDSU	5	32	3	58	.500	0	1	1	1	12	0	2	1	2	0	0	
Sep 19, 2009	Air Force	3	10	4	17	.353	0	0	0	0	2	0	3	0	3	0	0	
Sep 25, 2009	at Utah	5	19	13	58	.103	1	0	0	1	11	1	4	0	5	0	0	
Sep 29, 2009	NDSU BISON	3	16	6	39	.256	0	0	2	1	13	0	2	0	2	0	0	
Oct 3, 2009	at UNLV	3	14	5	39	.231	0	0	1	0	9	2	5	0	7	0	0	
Oct 08, 2009	NEW MEXICO	3	14	1	33	.394	0	0	0	0	3	1	2	0	3	0	0	
Oct 10, 2009	TCU																	
Oct 15, 2009	at Colorado St.																	
Oct 17, 2009	at Wyoming																	
Oct 23, 2009	Utah																	
Oct 27, 2009	Utah Valley																	
Oct 29, 2009	UNLV																	
Nov 5, 2009	at TCU																	
Nov 7, 2009	at New Mexico																	
Nov 12, 2009	Wyoming																	
Nov 14, 2009	Colorado St.																	
Nov 19, 2009	at Air Force																	
Nov 21, 2009	at SDSU																	
Nov 28, 2009	at St. Mary's																	
Totals		62	258	97	680	.237	4	4	10	10	124	5	46	4	51.0	0		

Season and Career Highs

- Kills**
Season: 32 vs. SDSU, 9/17/09
Career: 32 vs. SDSU, 9/17/09
- Hitting Percentage**
Season: .500 vs. SDSU, 9/17/09
Career: .500 vs. SDSU, 9/17/09
- Assists**
Season: 2 vs. No. 23 Kansas St, 9/5/09
Career: 3 vs. American, 9/6/08
- Digs**
Season: 17 vs. No. 23 Kansas St., 9/5/09
Career: 17 vs. No. 23 Kansas St., 9/5/09
- Blocks**
Season: 7 (twice)
Career: 8 (twice)
- Aces**
Season: 1 (three times)
Career: 1 (16 times)

Morgan Lloyd Sorensen • 5-4 • Libero/DS • Senior • Pleasant Grove, UT

2008 – Junior: Played in every match and set in her first season with the Cougars after transferring from Salt Lake Community College ... tallied three kills, 29 assists, 24 aces and 218 digs ... led BYU and was tied for fourth in the Mountain West Conference with 0.25 aces per set ... was third on the team in digs per set at 2.29 ... tallied double-digit digs in 10 matches and led the team in digs eight times, helping the Cougars go 6-2 in those matches ... started at the libero position for the first half of the season and finished the year as the defensive specialist ... began her Cougar career averaging 3.67 digs and 0.50 aces per set in the BYU Molten Classic ... notched a match-high 14 digs in the season-opener against Utah State ... before tallying her first kill of the year against Tulane to go along with 11 digs ... posted season highs of four aces and 19 digs against Missouri to help the Cougars secure the tournament title ... improved her defensive play the next weekend to average 4.08 dps at the Texas A&M Invitational with 16 digs against both Siena and American and 17 against the host Aggies ... began the InnTowner Invitational with three aces and 18 digs against Boise State ... also posted double-digit digs at then-No. 14 Wisconsin (12), at Wyoming (13) and against Utah (12) ... tallied three aces at Wyoming and at UNLV ... named Academic All-MWC.

Season Averages	
Sets played:	73
Kills per set:	0.01
Assists per set:	0.38
Service aces per set:	0.14
Digs per set:	3.26



MORGAN LLOYD SORENSSEN – 2009 Match-by-Match																	
Date	Opponent	ATTACK				Pct	SET		SERVE		PASS		BLOCK			GEN	
		SP	K	E	TA		A	SA	SE	RE	DIG	BS	BA	BE	Total	BHE	
Aug 28, 2009	vs Ole Miss	3	1	0	2	.500	1	0	1	0	11	0	0	0	0.0	0	
Aug 29, 2009	vs Texas State	3	0	0	0	.000	0	1	2	0	8	0	0	0	0.0	0	
Aug 29, 2009	at Missouri	4	0	1	1	-1.000	0	0	0	3	19	0	0	0	0.0	0	
Sep 01, 2009	at Utah State	5	0	0	1	.000	1	1	1	4	11	0	0	0	0.0	0	
Sep 04, 2009	Cal Poly	5	0	0	0	.000	4	2	1	2	11	0	0	0	0.0	0	
Sep 05, 2009	Weber State	3	0	0	0	.000	2	1	1	0	1	0	0	0	0.0	1	
Sep 05, 2009	No. 23 Kansas St.	5	0	0	0	.000	1	0	1	4	24	0	0	0	0.0	0	
Sep 10, 2009	vs No. 8 UCLA	4	0	1	2	-.500	0	0	1	1	11	0	0	0	0.0	0	
Sep 11, 2009	at No. 5 Nebraska	4	0	0	3	.000	0	1	1	3	3	0	0	0	0.0	0	
Sep 12, 2009	vs Virginia	4	0	1	3	-.333	2	0	1	1	21	0	0	0	0.0	0	
Sep 17, 2009	SDSU	5	0	0	1	.000	0	1	2	2	22	0	0	0	0.0	0	
Sep 19, 2009	Air Force	3	0	0	0	.000	1	0	5	0	11	0	0	0	0.0	0	
Sep 25, 2009	at Utah	5	0	0	1	.000	1	0	2	2	21	0	0	0	0.0	0	
Sep 29, 2009	NDSU BISON	3	0	0	0	.000	2	0	1	0	8	0	0	0	0.0	0	
Oct 03, 2009	at UNLV	3	0	1	1	-1.000	3	0	2	0	10	0	0	0	0.0	0	
Oct 08, 2009	NEW MEXICO	3	0	0	1	.000	2	0	1	0	5	0	0	0	0.0	0	
Oct 10, 2009	TCU	3	0	0	0	.000	1	1	1	0	13	0	0	0	0.0	1	
Oct 15, 2009	at Colorado State	3	0	0	1	.000	2	1	3	0	10	0	0	0	0.0	0	
Oct 17, 2009	at Wyoming	5	0	0	0	.000	5	1	1	0	18	0	0	0	0.0	0	
Oct 23, 2009	Utah																
Oct 27, 2009	Utah Valley																
Oct 29, 2009	UNLV																
Nov 5, 2009	at TCU																
Nov 7, 2009	at New Mexico																
Nov 12, 2009	Wyoming																
Nov 14, 2009	Colorado St.																
Nov 19, 2009	at Air Force																
Nov 21, 2009	at SDSU																
Nov 28, 2009	at St. Mary's																
Totals		73	1	4	17	-.176	28	10	28	22	238	0	0	0	0.0	2	

Season and Career Highs

- Kills**
Season: 1 (three times)
Career: 1 (five times)
- Hitting Percentage**
Season: .500 at Ole Miss, 8/28/09
Career: 1.000 (twice)
- Assists**
Season: 5 at Wyoming, 10/17/09
Career: 5 at Wyoming, 10/17/09
- Digs**
Season: 24 vs. No. 23 Kansas St., 9/5/09
Career: 24 vs. No. 23 Kansas St., 9/5/09
- Aces**
Season: 2 vs. Cal Poly, 9/4/09
Career: 4 vs. Missouri, 8/30/08

Melissa Lake Wright • 5-5 • Libero/DS • Junior • Palm Springs, CA

2008 – **Sophomore:** Played in 21 matches and 71 sets for BYU as a walk-on sophomore ... began the year as a defensive specialist but became the starting libero midway through the year ... finished the season with a team-best 253 digs along with two kills, 16 assists and eight aces ... led the team and ranked fifth in the Mountain West Conference with 3.56 digs per set ... was third in the league in that category in conference play (4.12) ... tallied 14 matches in double-figure kills, including two matches with 20 digs ... led the team in digs in 15 contests ... made her Cougar debut in BYU's season-opening match, playing one set against Utah State after walking on to the team ... saw time in the back row at the InnTownner Invitational, leading BYU with 18 digs at No. 14 Wisconsin ... outdug both liberos at No. 15 Colorado State, tallying 12 digs despite only playing half the time ... made her first career start against Air Force, posting 16 digs in three sets ... notched a career-high 20 digs at UNLV ... posted 19 digs at No. 23 Utah ... helped BYU stun No. 15 Colorado State in Provo with 20 digs in five sets, tying her career high ... named Academic All-MWC.

Season Averages	
Sets played:	73
Kills per set:	0.01
Assists per set:	0.41
Service aces per set:	0.11
Digs per set:	2.41



11

MELISSA LAKE WRIGHT – 2009 Match-by-Match																	
Date	Opponent	ATTACK				Pct	SET		SERVE		PASS		BLOCK			GEN	
		SP	K	E	TA		A	SA	SE	RE	DIG	BS	BA	BE	Total	BHE	
Aug 28, 2009	vs Ole Miss	3	1	0	1	1.000	1	0	1	0	7	0	0	0	0.0	0	
Aug 29, 2009	vs Texas State	3	0	0	0	.000	1	0	0	0	6	0	0	0	0.0	0	
Aug 29, 2009	at Missouri	4	0	0	1	.000	2	0	1	0	7	0	0	0	0.0	0	
Sep 01, 2009	at Utah State	5	0	0	0	.000	0	0	0	1	2	0	0	0	0.0	0	
Sep 04, 2009	Cal Poly	5	0	0	1	.000	3	0	1	1	14	0	0	0	0.0	0	
Sep 05, 2009	Weber State	3	0	0	1	.000	1	0	0	1	2	0	0	0	0.0	0	
Sep 05, 2009	No. 23 Kansas St.	5	0	0	1	.000	2	1	1	1	18	0	0	0	0.0	0	
Sep 10, 2009	vs No. 8 UCLA	4	0	0	0	.000	0	0	0	0	7	0	0	0	0.0	0	
Sep 11, 2009	at No. 5 Nebraska	4	0	0	0	.000	2	0	1	1	14	0	0	0	0.0	0	
Sep 12, 2009	vs Virginia	4	0	0	2	.000	2	3	0	2	11	0	0	0	0.0	0	
Sep 17, 2009	SDSU	5	0	0	2	.000	5	1	1	0	18	0	0	0	0.0	1	
Sep 19, 2009	Air Force	3	0	0	0	.000	1	0	2	0	3	0	0	0	0.0	0	
Sep 25, 2009	at Utah	5	0	0	1	.000	2	0	1	0	15	0	0	0	0.0	0	
Sep 29, 2009	NDSU BISON	3	0	0	3	.000	3	1	0	0	10	0	0	0	0.0	0	
Oct 3, 2009	at UNLV	3	0	0	0	.000	1	0	2	0	6	0	0	0	0.0	0	
Oct 08, 2009	NEW MEXICO	3	0	0	0	.000	1	0	1	0	4	0	0	0	0.0	0	
Oct 10, 2009	TCU	3	0	0	1	.000	2	0	1	0	11	0	0	0	0.0	0	
Oct 15, 2009	at Colorado State	3	0	0	2	.000	0	0	2	0	9	0	0	0	0.0	0	
Oct 17, 2009	at Wyoming	5	0	0	0	.000	1	2	2	0	12	0	0	0	0.0	0	
Oct 23, 2009	Utah																
Oct 27, 2009	Utah Valley																
Oct 29, 2009	UNLV																
Nov 5, 2009	at TCU																
Nov 7, 2009	at New Mexico																
Nov 12, 2009	Wyoming																
Nov 14, 2009	Colorado St.																
Nov 19, 2009	at Air Force																
Nov 21, 2009	at SDSU																
Nov 28, 2009	at St. Mary's																
Totals		73	1	0	16	.062	30	8	17	7	176	0	0	0	0.0	1	

Season and Career Highs

- Kills**
Season: 1 at Ole Miss, 8/28/09
Career: 1 (three times)
- Hitting Percentage**
Season: 1.000 at Ole Miss, 8/28/09
Career: 1.000 at Ole Miss, 8/28/09
- Assists**
Season: 5 vs. SDSU, 9/17/09
Career: 5 vs. SDSU, 9/17/09
- Digs**
Season: 18 (twice)
Career: 20 (twice)
- Aces**
Season: 3 vs. Virginia, 9/12/09
Career: 3 vs. Virginia, 9/12/09

Christina Measom • 6-0 • Middle Blocker • Junior • Lehi, UT

2008 – Sophomore: Played in 18 matches and 51 sets for the Cougars as a sophomore ... began the season hitting on the rightside but started the last 11 matches of the year on the outside ... finished the year with 91 kills, two assists, 19 digs and 33 blocks on .154 hitting ... averaged 1.78 kills and 0.65 blocks per set ... tallied double-digit kills twice ... led BYU in kills once, hitting percentage twice and blocks four times ... made her 2008 season debut at the Texas A&M Invitational, playing one set apiece against Siena and American ... tallied a then-career-high eight kills on .700 hitting against Central Michigan ... came up big for the Cougars in her first start of the season vs. UNLV with a then-career-high nine kill on .381 hitting, both team bests ... posted seven kills at Air Force ... tallied eight kills, a career-high four digs and a then-season-best four blocks vs. TCU ... contributed seven kills on .429 hitting at SDSU ... recorded a career-high 12 kills at No. 23 Utah ... ended the year with 10 kills and four digs in BYU's five-set upset of No. 15 Colorado State and a career-high five blocks vs. Wyoming in the Cougars' last match of the year ... named Academic All-Mountain West Conference.

Season Averages	
Sets played:	73
Kills per set:	2.26
Assists per set:	0.11
Service aces per set:	0.03
Digs per set:	0.22
Blocks per set:	1.01



CHRISTINA MEASOM – 2009 Match-by-Match																		
Date	Opponent	SP	ATTACK				Pct	SET		SERVE		PASS		BLOCK			GEN	
			K	E	TA			A	SA	SE	RE	DIG	BS	BA	BE	Total	BHE	
Aug 28, 2009	vs Ole Miss	3	4	1	11	.273	1	0	0	0	0	0	2	0	2.0	0		
Aug 29, 2009	vs Texas State	3	5	1	11	.364	0	0	0	0	0	0	5	0	5.0	0		
Aug 29, 2009	at Missouri	4	10	3	18	.389	1	0	0	0	1	0	2	0	2.0	0		
Sep 01, 2009	at Utah State	5	13	2	25	.440	0	0	0	0	0	0	3	0	3.0	0		
Sep 04, 2009	Cal Poly	5	7	6	27	.037	1	0	0	0	0	0	1	1	1.0	0		
Sep 05, 2009	Weber State	3	5	2	8	.375	0	0	0	0	2	0	0	0	0.0	0		
Sep 05, 2009	No. 23 Kansas St.	5	14	7	31	.226	0	0	0	0	1	0	2	0	2.0	0		
Sep 10, 2009	vs No. 8 UCLA	4	6	4	22	.091	0	0	0	0	0	0	5	0	5.0	0		
Sep 11, 2009	at No. 5 Nebraska	4	12	3	22	.409	0	0	3	0	0	0	2	0	2.0	0		
Sep 12, 2009	vs Virginia	4	12	4	27	.296	0	1	3	0	1	0	4	0	4.0	0		
Sep 17, 2009	SDSU	5	8	5	26	.115	2	0	1	1	1	0	8	1	8.0	0		
Sep 19, 2009	Air Force	3	9	1	17	.471	1	0	0	0	0	1	6	0	7.0	0		
Sep 25, 2009	at Utah	5	7	4	32	.094	0	0	0	0	3	0	11	0	11.0	1		
Sep 29, 2009	NDSU BISON	3	10	6	22	.182	0	0	0	0	1	0	1	0	1.0	0		
Oct 3, 2009	at UNLV	3	6	3	15	.200	0	0	0	0	0	0	7	0	7.0	1		
Oct 08, 2009	NEW MEXICO	3	9	1	15	.533	2	0	0	0	1	1	4	0	5.0	0		
Oct 10, 2009	TCU	3	10	2	27	.296	0	0	0	0	4	1	2	1	3.0	0		
Oct 15, 2009	at Colorado State	3	5	6	25	-.040	0	1	0	0	0	0	0	1	0.0	0		
Oct 17, 2009	at Wyoming	5	13	4	29	.310	0	0	0	0	1	2	4	0	6.0	0		
Oct 23, 2009	Utah																	
Oct 27, 2009	Utah Valley																	
Oct 29, 2009	UNLV																	
Nov 5, 2009	at TCU																	
Nov 7, 2009	at New Mexico																	
Nov 12, 2009	Wyoming																	
Nov 14, 2009	Colorado St.																	
Nov 19, 2009	at Air Force																	
Nov 21, 2009	at SDSU																	
Nov 28, 2009	at St. Mary's																	
Totals		73	165	65	410	.244	8	2	7	1	16	5	69	4	74.0	2		

Season and Career Highs

- Kills**
Season: 14 vs. No. 23 Kansas St., 9/5/09
Career: 14 vs. No. 23 Kansas St., 9/5/09
- Hitting Percentage**
Season: .533 vs New Mexico, 10/8/09
Career: .700 vs. Cent. Michigan, 9/13/08
- Assists**
Season: 2 (twice)
Career: 2 (three times)
- Digs**
Season: 4 vs. TCU, 10/10/09
Career: 4 (three times)
- Blocks**
Season: 11 at Utah, 9/25/09
Career: 11 at Utah, 9/25/09

Kiana Rogers • 5-11 • Setter • Junior • Placerville, CA

2008 – **Sophomore:** Played in every match and every set for BYU as the starting setter in her sophomore season ... averaged 10.14 assists per set, which ranked third in the Mountain West Conference, while also finishing the year with 20 aces, 0.21 per contest ... ranked third in the league in assists in MWC play (10.40) ... tallied a team-best 10 double-doubles while posting double-digit digs in 10 matches on the year ... led the team in attack percentage four times, digs twice and blocks once ... posted two double-doubles during the BYU Molten Classic in the first weekend of the season, leading the Cougars in digs against Tulane (14) before putting up a career-high 21 digs against Missouri to help BYU capture the tournament title ... the 21 digs was the highest dig total recorded by any Cougar the entire season ... continued her double-double streak with 12 kills vs. Siena, 13 vs. American and 11 at Texas A&M in the Texas A&M Invitational the following weekend, marking five straight double-doubles ... also recorded a career-high five kills vs. American ... contributed 39 assists and 14 digs in BYU's five-set loss at then-No. 14 Wisconsin, her sixth double-double of the year ... hit a season-high .667 with four kills on six swings against Air Force ... notched a season-best 58 assists vs. SDSU ... tallied 49 assists and 12 digs vs. TCU ... posted 50 assists and 17 digs at UNLV followed by 55 assists and 10 digs at then-No. 23 Utah ... recorded her final double-double of the year in BYU's five-set upset win over then-No. 15 Colorado State with 50 assists and 14 digs to go along with a career-high six blocks.

Season Averages	
Sets played:	72
Kills per set:	0.56
Assists per set:	9.54
Service aces per set:	0.17
Digs per set:	2.15
Blocks per set:	0.90



KIANA ROGERS – 2009 Match-by-Match																
Date	Opponent	ATTACK				SET	SERVE			PASS		BLOCK			GEN	
		SP	K	E	TA		Pct	A	SA	SE	RE	DIG	BS	BA	BE	Total
Aug 28, 2009	vs Ole Miss	3	5	0	6	.833	27	0	2	0	6	0	3	1	3.0	1
Aug 29, 2009	vs Texas State	3	1	0	4	.250	30	0	1	0	12	1	5	0	6.0	0
Aug 29, 2009	at Missouri	4	3	0	6	.500	36	0	1	0	8	0	2	0	2.0	1
Sep 01, 2009	at Utah State	5	3	1	6	.333	54	1	0	1	8	0	3	0	3.0	2
Sep 04, 2009	Cal Poly	5	3	1	7	.286	41	1	1	0	7	0	3	0	3.0	0
Sep 05, 2009	Weber State	3	2	0	4	.500	23	1	0	0	4	0	4	0	4.0	1
Sep 05, 2009	No. 23 Kansas St.	5	2	0	7	.286	48	0	2	0	10	1	2	0	3.0	0
Sep 10, 2009	vs No. 8 UCLA	4	1	0	5	.200	23	0	1	0	8	0	4	0	4.0	1
Sep 11, 2009	at No. 5 Nebraska	4	1	1	6	.000	39	0	1	0	10	1	1	0	2.0	0
Sep 12, 2009	vs Virginia	4	1	1	7	.000	41	1	2	0	11	0	2	0	2.0	0
Sep 17, 2009	SDSU	5	4	2	8	.250	55	0	1	0	11	0	6	1	6.0	1
Sep 19, 2009	Air Force	2	1	0	2	.500	20	1	2	0	4	0	1	0	1.0	1
Sep 25, 2009	at Utah	5	5	2	9	.333	41	2	2	0	6	2	5	1	7.0	1
Sep 29, 2009	NDSU BISON	3	1	0	4	.250	38	0	0	0	16	0	3	0	3.0	0
Oct 3, 2009	at UNLV	3	1	0	1	1.000	30	1	1	0	9	0	4	1	4.0	0
Oct 08, 2009	NEW MEXICO	3	4	0	6	.667	35	1	2	1	3	0	4	0	4.0	0
Oct 10, 2009	TCU	3	1	1	6	.000	35	1	1	0	7	0	2	0	2.0	0
Oct 15, 2009	at Colorado State	3	0	0	4	.000	26	0	0	0	7	0	1	0	1.0	0
Oct 17, 2009	at Wyoming	5	1	1	8	.000	45	2	2	0	8	0	5	0	5.0	0
Oct 23, 2009	Utah															
Oct 27, 2009	Utah Valley															
Oct 29, 2009	UNLV															
Nov 5, 2009	at TCU															
Nov 7, 2009	at New Mexico															
Nov 12, 2009	Wyoming															
Nov 14, 2009	Colorado St.															
Nov 19, 2009	at Air Force															
Nov 21, 2009	at SDSU															
Nov 28, 2009	at St. Mary's															
Totals		72	40	10	106	.283	687	12	22	2	155	5	60	4	65.0	9

Season and Career Highs

- Kills**
Season: 5 (twice)
Career: 5 (three times)
- Hitting Percentage**
Season: 1.000 at UNLV, 10/3/09
Career: 1.000 at UNLV, 10/3/09
- Assists**
Season: 55 vs. SDSU, 9/17/09
Career: 72 at SDSU, 9/15/07
- Digs**
Season: 16 vs. NDSU, 9/29/09
Career: 21 vs. Missouri, 8/30/08
- Blocks**
Season: 7 at Utah, 9/25/09
Career: 7 at Utah, 9/25/09
- Aces**
Season: 2 at Utah, 9/25/09
Career: 3 (three times)

Stephanie Lau • 5-10 • Outside Hitter • Senior • Edmonds, WA

2008 – Junior: Saw action in seven matches and 10 sets as a junior at both the defensive specialist and outside hitter positions ... totaled four kills, 1 ace and five digs while hitting .250 on the year ... made her 2008 debut against Utah State in the BYU Molten Classic, playing one set ... played one set against Texas A&M as a defensive specialist ... saw action in two sets at Wyoming at the outside hitter position, tallying two kills ... played all three sets against Air Force, posting season highs of three digs and one ace ... recorded one kill against Wyoming in the final match of the year ... earned Academic All-Mountain West Conference honors.

Season Averages	
Sets played:	12
Kills per set:	0.75
Digs per set:	0.17



STEPHANIE LAU – 2009 Match-by-Match																	
Date	Opponent	ATTACK				Pct	SET		SERVE		PASS		BLOCK			GEN	
		SP	K	E	TA		A	SA	SE	RE	DIG	BS	BA	BE	Total	BHE	
Aug 28, 2009	@ Ole Miss	DNP															
Aug 29, 2009	vs Texas State	1	0	1	1	-1.000	0	0	0	1	0	0	0	0	0	0.0	0
Aug 29, 2009	at Missouri	1	0	0	0	.000	0	0	0	0	0	0	0	0	0	0.0	0
Sept 1, 2009	@ Utah State	DNP															
Sept 4, 2009	Cal Poly	DNP															
Sept 5, 2009	Weber State	DNP															
Sept 5, 2009	No. 23 Kansas St.	DNP															
Sept 10, 2009	vs No. 8 UCLA	DNP															
Sept 11, 2009	at No. 5 Nebraska	DNP															
Sept 12, 2009	vs Virginia	DNP															
Sept 17, 2009	SDSU	DNP															
Sep 19, 2009	Air Force	2	1	2	16	-.062	0	0	0	0	1	0	0	0	0.0	0	
Sep 25, 2009	at Utah	1	0	0	1	.000	0	0	0	0	0	0	0	0	0.0	0	
Sep 29, 2009	NDSU BISON	2	1	2	9	-.111	0	0	0	0	1	0	0	0	0.0	0	
Oct 3, 2009	at UNLV	DNP															
Oct 8, 2009	New Mexico	DNP															
Oct 10, 2009	TCU	DNP															
Oct 15, 2009	at Colorado St.	DNP															
Oct 17, 2009	at Wyoming	5	7	6	24	.042	0	0	0	1	0	0	0	0	0.0	0	
Oct 23, 2009	Utah																
Oct 27, 2009	Utah Valley																
Oct 29, 2009	UNLV																
Nov 5, 2009	at TCU																
Nov 7, 2009	at New Mexico																
Nov 12, 2009	Wyoming																
Nov 14, 2009	Colorado St.																
Nov 19, 2009	at Air Force																
Nov 21, 2009	at SDSU																
Nov 28, 2009	at St. Mary's																
Totals		12	9	11	51	-.039	0	0	0	2	2	0	0	0	0.0	0	

Season and Career Highs

- Kills**
Season: 7 at Wyoming, 10/17/09
Career: 7 at Wyoming, 10/17/09
- Hitting Percentage**
Season: .042 at Wyoming, 10/17/09
Career: 1.000 vs. Air Force, 10/26/07
- Assists**
Season: -
Career: 1 (twice)
- Digs**
Season: 1 (twice)
Career: 8 at Weber State, 9/18/07
- Aces**
Season: -
Career: 4 at UVSC, 10/3/06

Christie Carpenter • 6-1 • Outside Hitter • Sophomore • Cedar Hills, UT

2007 – Freshman: Played in three matches and 10 games as a true freshman, tallying 16 kills, two aces, 13 digs and four blocks ... averaged 1.60 kills and 1.30 digs per game ... made her Cougar debut against American in the BYU Molten Classic, playing in two games and recording two kills, two aces and a career-high six digs ... made the first start of her career at Weber State, posting a personal-best eight kills, five digs and two blocks ... notched five kills, two digs and two blocks in a start vs. Air Force.

Season Averages	
Sets played:	68
Kills per set:	2.04
Assists per set:	0.06
Service aces per set:	0.15
Digs per set:	1.06
Blocks per set:	0.63



14

CHRISTIE CARPENTER – 2009 Match-by-Match																		
Date	Opponent	ATTACK					Pct	SET			PASS			BLOCK			GEN	
		SP	K	E	TA			A	SA	SE	RE	DIG	BS	BA	BE	Total	BHE	
Aug 28, 2009	vs Ole Miss	3	6	1	16	.312	0	1	1	0	6	0	1	0	1.0	0		
Aug 29, 2009	vs Texas State	3	6	5	24	.042	1	1	1	0	6	1	5	1	6.0	0		
Aug 29, 2009	at Missouri	4	9	8	36	.028	0	3	2	2	5	0	3	1	3.0	0		
Sep 01, 2009	at Utah State	5	11	5	31	.194	2	0	0	4	1	0	2	1	2.0	0		
Sep 04, 2009	Cal Poly	5	7	5	17	.118	1	0	0	0	5	0	6	2	6.0	0		
Sep 05, 2009	Weber State	3	5	4	13	.077	0	3	2	0	5	1	3	0	4.0	0		
Sep 05, 2009	No. 23 Kansas St.	5	5	2	21	.143	0	1	1	0	4	0	4	0	4.0	0		
Sep 10, 2009	vs No. 8 UCLA	4	4	4	21	.000	0	0	2	0	1	0	7	0	7.0	0		
Sep 11, 2009	at No. 5 Nebraska	4	8	3	23	.217	0	0	0	0	0	0	0	0	0.0	0		
Sep 12, 2009	vs Virginia	4	6	7	22	-.045	0	0	0	0	0	0	2	0	2.0	0		
Sep 17, 2009	SDSU	3	2	2	11	.000	0	0	1	1	1	0	1	1	1.0	0		
Sept 19, 2009	Air Force	DNP - Injured																
Sep 25, 2009	at Utah	5	7	7	30	.000	0	0	0	0	4	1	1	0	2.0	0		
Sep 29, 2009	NDSU BISON	3	4	1	18	.167	0	0	0	0	1	0	1	1	1.0	0		
Oct 3, 2009	at UNLV	3	6	2	17	.235	0	0	0	0	0	0	0	0	0.0	0		
Oct 08, 2009	NEW MEXICO	3	9	2	20	.350	0	0	4	1	9	0	1	0	1.0	0		
Oct 10, 2009	TCU	3	15	6	41	.220	0	0	1	0	10	0	2	1	2.0	0		
Oct 15, 2009	at Colorado State	3	8	7	38	.026	0	0	2	0	6	0	0	1	0.0	0		
Oct 17, 2009	at Wyoming	5	21	8	56	.232	0	1	1	0	8	0	1	0	1.0	0		
Oct 23, 2009	Utah																	
Oct 27, 2009	Utah Valley																	
Oct 29, 2009	UNLV																	
Nov 5, 2009	at TCU																	
Nov 7, 2009	at New Mexico																	
Nov 12, 2009	Wyoming																	
Nov 14, 2009	Colorado St.																	
Nov 19, 2009	at Air Force																	
Nov 21, 2009	at SDSU																	
Nov 28, 2009	at St. Mary's																	
Totals		68	139	79	455	.132	4	10	18	8	72	3	40	9	43.0	0		

Season and Career Highs

- Kills**
Season: 21 at Wyoming, 10/17/09
Career: 21 at Wyoming, 10/17/09
- Hitting Percentage**
Season: .350 vs. New Mexico, 10/8/09
Career: .350 vs. New Mexico, 10/8/09
- Assists**
Season: 2 at Utah State, 9/1/09
Career: 2 (twice)
- Digs**
Season: 10 vs. TCU, 10/10/09
Career: 10 vs. TCU, 10/10/09
- Blocks**
Season: 7 vs. No. 8 UCLA, 9/10/09
Career: 7 vs. No. 8 UCLA, 9/10/09
- Aces**
Season: 3 (twice)
Career: 3 (twice)

Casey Speredon Thurston • 6-1 • Outside Hitter • Sophomore • West Valley City, UT

2008 – Freshman: Saw action in 11 matches and 13 sets as a redshirt freshman ... totaled 18 kills, one dig and one block ... did not play the first nine matches of the year due to an injury suffered during the team's foreign tour in Argentina ... made her Cougar debut at Wyoming, playing one set ... also saw action in one set at then-No. 15 Colorado State ... tallied four kills on five swings in one set against Air Force, hitting .600 on the night ... posted one kill on two swings at New Mexico and saw action in one set at TCU ... put down a kill on her only swing against UNLV ... tied her career high with four kills at Air Force ... established a new career high with five kills vs. TCU while adding the first block of her BYU career ... played one set with one kill at UNLV ... saw action in one set at then-No. 23 Utah ... posted two kills on three swings against Wyoming in the final match of the year, recording a season-high .667 hitting percentage.

Season Averages	
Sets played:	48
Kills per set:	1.69
Assists per set:	0.04
Digs per set:	0.23
Blocks per set:	0.60



CASEY SPEREDON THURSTON – 2009 Match-by-Match																		
Date	Opponent	ATTACK				Pct	SET			SERVE		PASS		BLOCK			GEN	
		SP	K	E	TA		A	SA	SE	RE	DIG	BS	BA	BE	Total	BHE		
Aug 28, 2009	vs Ole Miss	3	4	3	10	.100	0	0	0	0	0	0	3	0	3.0	0		
Aug 29, 2009	vs Texas State	3	5	0	10	.500	0	0	0	0	0	0	0	0	0.0	0		
Aug 29, 2009	at Missouri	4	9	2	25	.280	0	0	0	1	1	3	0	4.0	1			
Sep 01, 2009	at Utah State	5	6	8	19	-.105	1	0	0	2	0	1	0	1.0	0			
Sep 04, 2009	Cal Poly	5	8	2	18	.333	1	0	0	1	1	0	2	2.0	0			
Sep 05, 2009	Weber State	3	7	1	12	.500	0	0	0	0	0	0	0	0.0	0			
Sep 05, 2009	No. 23 Kansas St.	5	9	4	20	.250	0	0	0	0	1	0	3	3.0	0			
Sep 10, 2009	vs No. 8 UCLA	4	3	2	25	.040	0	0	0	2	0	3	0	3.0	1			
Sep 11, 2009	at No. 5 Nebraska	4	7	1	20	.300	0	0	0	2	0	2	0	2.0	0			
Sep 12, 2009	vs Virginia	4	7	6	27	.037	0	0	0	1	2	0	3	3.0	0			
Sep 17, 2009	SDSU	5	13	5	30	.267	0	0	0	2	0	1	4	5.0	0			
Sep 19, 2009	Air Force	3	3	3	10	.000	0	0	1	0	0	3	0	3.0	0			
Sept 25, 2009	at Utah	DNP - Injured																
Sept 29, 2009	North Dakota St.	DNP - Injured																
Oct 3, 2009	at UNLV	DNP - Injured																
Oct 8, 2009	New Mexico	DNP - Injured																
Oct 10, 2009	TCU	DNP - Injured																
Oct 15, 2009	at Colorado St.	DNP - Injured																
Oct 17, 2009	at Wyoming	DNP - Injured																
Oct 23, 2009	Utah																	
Oct 27, 2009	Utah Valley																	
Oct 29, 2009	UNLV																	
Nov 5, 2009	at TCU																	
Nov 7, 2009	at New Mexico																	
Nov 12, 2009	Wyoming																	
Nov 14, 2009	Colorado St.																	
Nov 19, 2009	at Air Force																	
Nov 21, 2009	at SDSU																	
Nov 28, 2009	at St. Mary's																	
Totals		48	81	37	226	.195	2	0	1	4	11	2	27	2	29.0	2		

Season and Career Highs

- Kills**
Season: 13 vs. SDSU, 9/17/09
Career: 13 vs. SDSU, 9/17/09
- Hitting Percentage**
Season: .500 (twice)
Career: .667 vs. Wyoming, 11/22/08
- Assists**
Season: 1 (twice)
Career: 1 (twice)
- Digs**
Season: 2 (four times)
Career: 2 (four times)
- Blocks**
Season: 5 vs. SDSU, 9/17/09
Career: 5 vs. SDSU, 9/17/09
- Aces**
Season: -
Career: -

Chelsea Goodsell • 5-2 • Libero • Sophomore • Laguna Niguel, CA

BEFORE BYU

Sacramento State University: Played one season for Sacramento State under legendary head coach Debby Colberg ... helped her team compile a 29-8 overall record while winning the Big Sky Conference Championship and advancing to the second round of the NCAA Tournament before losing to eventual national runner-up Stanford ... played in every match for the Hornets as a freshman, ranking second on the team with 4.37 digs per game ... also served up 30 aces on the year ... recorded double-digit digs in 31 matches on the year, topping the 20-dig mark nine times ... tallied a career-high 30 digs against Portland State ... posted five aces against Montana ... notched 15 digs in a four-game win against Minnesota in the first round of the NCAA Tournament.

Season Averages	
Sets played:	61
Kills per set:	0.00
Assists per set:	0.15
Service aces per set:	0.20
Digs per set:	1.74



CHELSEA GOODSSELL – 2009 Match-by-Match																	
Date	Opponent	SP	ATTACK				SET	SERVE			PASS		BLOCK			GEN	
			K	E	TA	Pct		A	SA	SE	RE	DIG	BS	BA	BE	Total	BHE
Aug 28, 2009	vs Ole Miss	DNP															
Aug 29, 2009	vs Texas State	DNP															
Aug 29, 2009	at Missouri	DNP															
Sep 01, 2009	at Utah State	5	0	0	0	.000	0	0	3	0	9	0	0	0	0.0	0	
Sep 04, 2009	Cal Poly	5	0	2	5	-.400	2	1	2	1	7	0	0	0	0.0	0	
Sep 05, 2009	Weber State	3	0	0	0	.000	1	0	1	1	3	0	0	0	0.0	0	
Sep 05, 2009	No. 23 Kansas St.	5	0	1	2	-.500	2	2	0	0	13	0	0	0	0.0	0	
Sep 10, 2009	vs No. 8 UCLA	4	0	0	0	.000	0	0	1	1	6	0	0	0	0.0	0	
Sep 11, 2009	at No. 5 Nebraska	4	0	1	1	-1.000	2	1	1	1	13	0	0	0	0.0	0	
Sep 12, 2009	vs Virginia	4	0	0	2	.000	0	0	2	1	18	0	0	0	0.0	0	
Sep 17, 2009	SDSU	5	0	0	0	.000	1	2	1	1	8	0	0	0	0.0	0	
Sep 19, 2009	Air Force	3	0	0	0	.000	0	1	1	0	2	0	0	0	0.0	0	
Sep 25, 2009	at Utah	5	0	0	1	.000	0	2	3	2	9	0	0	0	0.0	0	
Sep 29, 2009	NDSU BISON	3	0	0	0	.000	0	0	0	1	2	0	0	0	0.0	0	
Oct 3, 2009	at UNLV	3	0	0	0	.000	1	0	1	0	4	0	0	0	0.0	0	
Oct 08, 2009	NEW MEXICO	2	0	0	0	.000	0	1	0	0	1	0	0	0	0.0	0	
Oct 10, 2009	TCU	3	0	0	0	.000	0	1	0	1	2	0	0	0	0.0	0	
Oct 15, 2009	at Colorado State	2	0	0	0	.000	0	0	1	0	1	0	0	0	0.0	0	
Oct 17, 2009	at Wyoming	5	0	0	0	.000	0	1	2	1	8	0	0	0	0.0	0	
Oct 23, 2009	Utah																
Oct 27, 2009	Utah Valley																
Oct 29, 2009	UNLV																
Nov 5, 2009	at TCU																
Nov 7, 2009	at New Mexico																
Nov 12, 2009	Wyoming																
Nov 14, 2009	Colorado St.																
Nov 19, 2009	at Air Force																
Nov 21, 2009	at SDSU																
Nov 28, 2009	at St. Mary's																
Totals		61	0	4	11	-.364	9	12	19	11	106	0	0	0	0.0	0	

Season and Career Highs

- Kills**
Season: -
Career: -
- Hitting Percentage**
Season: -
Career: -
- Assists**
Season: 2 (three times)
Career: 2 (three times)
- Digs**
Season: 18 vs. Virginia, 9/12/09
Career: 18 vs. Virginia, 9/12/09
- Aces**
Season: 2 (twice)
Career: 2 (twice)

Nicole Warner • 6-2 • Middle Blocker • Freshman • Rigby, ID

AT BYU
2008 – REDSHIRT

BEFORE BYU

Club: Played for the Idaho Falls Juniors under coaches Teresa Anderson and Dave Cousins ... hit .543 while averaging 1.3 blocks per game in 2007 ... qualified for Nationals in 2007 during High Performance at the IVA.

High School: Two-year letterwinner at Rigby High School in Rigby, Idaho, under head coach Jeff Selditz ... named first-team all-state as a senior in 2007 after posting 332 kills and 197 blocks ... also received 4A All-Area First Team and High Country All-Conference honors following her senior campaign ... helped her team finish second in the district and fourth in the state ... earned MVP recognition at the Wood River Invitational ... also a two-year letterwinner and all-conference honoree in basketball ... participated in the America's Junior Miss pageant, earning third runner-up ... high honor roll all four years of high school.

Season Averages	
Sets played:	73
Kills per set:	1.79
Assists per set:	0.07
Service aces per set:	0.10
Digs per set:	0.42
Blocks per set:	1.27



NICOLE WARNER – 2009 Match-by-Match

Date	Opponent	ATTACK					SET	SERVE			PASS		BLOCK			GEN	
		SP	K	E	TA	Pct		A	SA	SE	RE	DIG	BS	BA	BE	Total	BHE
Aug 28, 2009	vs Ole Miss	3	5	0	11	.455	0	1	2	0	1	0	4	1	4.0	0	
Aug 29, 2009	vs Texas State	3	8	1	14	.500	0	0	1	0	2	1	3	0	4.0	0	
Aug 29, 2009	at Missouri	4	4	5	18	-.056	0	1	0	0	2	1	7	1	8.0	0	
Sep 01, 2009	at Utah State	5	6	3	18	.167	0	2	1	0	1	0	5	0	5.0	0	
Sep 04, 2009	Cal Poly	5	8	5	24	.125	0	0	2	0	0	0	5	2	5.0	0	
Sep 05, 2009	Weber State	3	3	2	10	.100	0	0	0	0	1	1	2	0	3.0	0	
Sep 05, 2009	No. 23 Kansas St.	5	12	0	24	.500	1	0	0	0	1	0	7	2	7.0	0	
Sep 10, 2009	vs No. 8 UCLA	4	0	2	14	-.143	0	1	1	0	1	0	7	2	7.0	0	
Sep 11, 2009	at No. 5 Nebraska	4	6	1	13	.385	0	0	0	0	1	0	5	0	5.0	0	
Sep 12, 2009	vs Virginia	4	7	2	20	.250	1	0	2	0	2	0	3	1	3.0	0	
Sep 17, 2009	SDSU	5	8	3	21	.238	0	1	2	0	2	0	5	1	5.0	0	
Sep 19, 2009	Air Force	3	4	0	7	.571	0	0	0	0	1	0	4	1	4.0	0	
Sep 25, 2009	at Utah	5	6	3	18	.167	1	0	2	0	1	2	4	0	6.0	0	
Sep 29, 2009	NDSU BISON	3	11	1	16	.625	0	0	0	0	1	0	5	0	5.0	0	
Oct 3, 2009	at UNLV	3	5	2	11	.273	0	0	0	0	2	0	4	1	4.0	0	
Oct 08, 2009	NEW MEXICO	3	7	3	13	.308	1	1	2	0	3	0	6	0	6.0	0	
Oct 10, 2009	TCU	3	10	5	23	.217	1	0	1	0	3	0	6	0	6.0	0	
Oct 15, 2009	at Colorado State	3	9	1	12	.667	0	0	1	0	0	0	2	0	2.0	0	
Oct 17, 2009	at Wyoming	5	12	2	27	.370	0	0	0	0	6	0	4	0	4.0	0	
Oct 23, 2009	Utah																
Oct 27, 2009	Utah Valley																
Oct 29, 2009	UNLV																
Nov 5, 2009	at TCU																
Nov 7, 2009	at New Mexico																
Nov 12, 2009	Wyoming																
Nov 14, 2009	Colorado St.																
Nov 19, 2009	at Air Force																
Nov 21, 2009	at SDSU																
Nov 28, 2009	at St. Mary's																
Totals		73	131	41	314	.287	5	7	17	0	31	5	88	12	93.0	0	

Season and Career Highs

- Kills**
Season: 12 (twice)
Career: 12 (twice)
- Hitting Percentage**
Season: .667 at Colorado St., 10/15/09
Career: .667 at Colorado St., 10/15/09
- Assists**
Season: 1 (twice)
Career: 1 (twice)
- Digs**
Season: 6 at Wyoming, 10/17/09
Career: 6 at Wyoming, 10/17/09
- Blocks**
Season: 8 at Missouri 8/29/09
Career: 8 at Missouri 8/29/09
- Aces**
Season: 2 at Utah State, 9/1/09
Career: 2 at Utah State, 9/1/09

Camilla Phillips • 5-11 • Outside Hitter • Junior • Jordan, UT

BEFORE BYU

Salt Lake Community College: Played two seasons at Salt Lake Community College, including her freshman year under current BYU head coach Shay Goulding ... 2008 NJCAA honorable mention All-American ... named All-Region 18 First Team in 2008 and was placed on the Region 18 All-Tournament Team ... helped her team take the Scenic West Athletic Conference and District A titles both seasons she played ... team finished third at Nationals in 2007 and ninth in 2008 ... totaled 374 kills (3.07/set) on .288 hitting with 67 blocks as a sophomore ... finished her freshman campaign with 76 kills on .291 hitting and 13 blocks.

Season Averages	
Sets played:	39
Kills per set:	1.15
Assists per set:	0.08
Digs per set:	0.36
Blocks per set:	0.64



CAMILLA PHILLIPS – 2009 Match-by-Match																		
Date	Opponent	ATTACK					SET A	SERVE			PASS		BLOCK			Total	GEN BHE	
		SP	K	E	TA	Pct		SA	SE	RE	DIG	BS	BA	BE				
Aug 28, 2009	vs Ole Miss	DNP																
Aug 29, 2009	vs Texas State	2	0	0	1	.000	0	0	0	0	0	0	0	0	0	0.0	0	
Aug 29, 2009	at Missouri	1	1	1	3	.000	0	0	1	0	0	0	0	0	0.0	1		
Sept 1, 2009	at Utah State	DNP																
Sep 04, 2009	Cal Poly	2	1	0	1	1.000	0	0	0	0	0	1	0	1.0	0			
Sep 5, 2009	Weber State	DNP																
Sep 5, 2009	No. 23 Kansas St.	DNP																
Sep 10, 2009	vs No. 3 UCLA	1	0	1	5	-.200	0	0	0	0	2	0	0	0.0	0			
Sep 11, 2009	at No. 5 Nebraska	DNP																
Sep 12, 2009	vs Virginia	2	1	2	7	-.143	0	0	0	0	0	0	0	0.0	0			
Sep 17, 2009	SDSU	3	0	2	5	-.400	1	0	0	0	0	1	0	1.0	0			
Sep 19, 2009	Air Force	3	6	2	11	.364	0	0	0	0	0	3	0	3.0	0			
Sep 25, 2009	at Utah	5	8	4	21	.190	0	0	1	1	0	6	0	6.0	1			
Sep 29, 2009	NDSU BISON	3	3	6	19	-.158	0	0	0	5	0	0	0	0.0	0			
Oct 3, 2009	at UNLV	3	6	3	19	.158	0	0	0	1	0	2	0	2.0	0			
Oct 08, 2009	NEW MEXICO	3	6	2	11	.364	0	0	0	1	0	5	0	5.0	0			
Oct 10, 2009	TCU	3	5	2	17	.176	1	0	0	2	0	2	0	2.0	1			
Oct 15, 2009	at Colorado State	3	3	2	11	.091	0	0	0	2	0	3	0	3.0	0			
Oct 17, 2009	at Wyoming	5	5	7	23	-.087	1	0	0	2	0	2	0	2.0	0			
Oct 23, 2009	Utah																	
Oct 27, 2009	Utah Valley																	
Oct 29, 2009	UNLV																	
Nov 5, 2009	at TCU																	
Nov 7, 2009	at New Mexico																	
Nov 12, 2009	Wyoming																	
Nov 14, 2009	Colorado St.																	
Nov 19, 2009	at Air Force																	
Nov 21, 2009	at SDSU																	
Nov 28, 2009	at St. Mary's																	
Totals		39	45	34	154	.071	3	0	1	3	14	0	25	0	25.0	3		

Season and Career Highs

Kills

Season: 8 at Utah, 9/25/09
 Career: 8 at Utah, 9/25/09

Hitting Percentage

Season: 1.000 vs. Cal Poly, 9/4/09
 Career: 1.000 vs. Cal Poly, 9/4/09

Assists

Season: 1 (three times)
 Career: 1 (three times)

Digs

Season: 5 vs. NDSU, 9/29/09
 Career: 5 vs. NDSU, 9/29/09

Blocks

Season: 6 at Utah, 9/25/09
 Career: 6 at Utah, 9/25/09

Aces

Season: -
 Career: -

Heather Hannemann • 5-8 • Setter • Freshman • Alpine, UT

BEFORE BYU

Club: Played for Utah Peak Performance under former BYU assistant coach Brooke Huebner and former Cougar standout Lindsay Hartsock ... took first place at the Las Vegas Invitational 18's Club Division ... earned second place at the Colorado Crossroads 18's Club Division ... qualified for Nationals in 2009.

Season Averages	
Sets played:	7
Kills per set:	0.00
Assists per set:	1.86
Service aces per set:	0.29
Digs per set:	0.29
Blocks per set:	0.14



HEATHER HANNEMANN – 2009 Match-by-Match																	
Date	Opponent	ATTACK				Pct	SET		SERVE		PASS		BLOCK			GEN	
		SP	K	E	TA		A	SA	SE	RE	DIG	BS	BA	BE	Total	BHE	
Aug 28, 2009	@ Ole Miss	DNP															
Aug 29, 2009	vs Texas State	1	0	0	0	.000	0	0	0	0	0	0	0	0	0	0.0	0
Aug 29, 2009	at Missouri	1	0	0	0	.000	0	0	0	0	0	0	0	0	0	0.0	0
Sept 1, 2009	@ Utah State	DNP															
Sept 4, 2009	Cal Poly	DNP															
Sept 5, 2009	Weber State	DNP															
Sept 5, 2009	No. 23 Kansas St.	DNP															
Sep 10, 2009	vs UCLA	2	0	0	1	.000	1	0	0	0	0	0	1	0	1.0	0	
Sep 11, 2009	at Nebraska	1	0	0	0	.000	0	0	0	0	0	0	0	0	0.0	1	
Sep 12, 2009	vs Virginia	1	0	0	0	.000	3	0	1	0	0	0	0	0	0.0	0	
Sept 17, 2009	SDSU	DNP															
Sep 19, 2009	Air Force	1	0	0	0	.000	9	2	1	0	2	0	0	0	0.0	0	
Sept 25, 2009	at Utah	DNP															
Sept 29, 2009	North Dakota St.	DNP															
Oct 3, 2009	at UNLV	DNP															
Oct 8, 2009	New Mexico	DNP															
Oct 10, 2009	TCU	DNP															
Oct 15, 2009	at Colorado St.	DNP															
Oct 17, 2009	at Wyoming	DNP															
Oct 23, 2009	Utah																
Oct 27, 2009	Utah Valley																
Oct 29, 2009	UNLV																
Nov 5, 2009	at TCU																
Nov 7, 2009	at New Mexico																
Nov 12, 2009	Wyoming																
Nov 14, 2009	Colorado St.																
Nov 19, 2009	at Air Force																
Nov 21, 2009	at SDSU																
Nov 28, 2009	at St. Mary's																
Totals		7	0	0	1	.000	13	2	2	0	2	0	1	0	1.0	1	

Season and Career Highs

Kills

Season: -

Career: -

Hitting Percentage

Season: -

Career: -

Assists

Season: 9 vs. Air Force, 9/19/09

Career: 9 vs. Air Force, 9/19/09

Digs

Season: 2 vs. Air Force, 9/19/09

Career: 2 vs. Air Force, 9/19/09

Blocks

Season: -

Career: -

Aces

Season: 2 vs. Air Force, 9/19/09

Career: 2 vs. Air Force, 9/19/09

Marisa Boaz • 6-1 • Middle Blocker • Senior • Sandy, UT

AT BYU

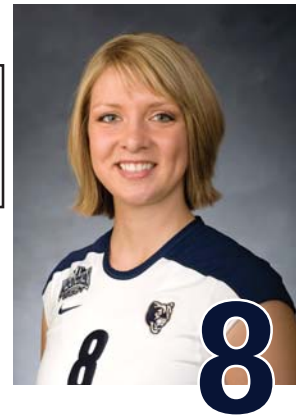
2008 – Junior: Played in three matches and four sets as a junior, totaling 1 assist, one dig and four blocks for an average of one block per set ... made her season debut at Wyoming, playing in one set and tallying one dig ... saw action in one set at Air Force ... tied her career high with one assist and had a season-high four blocks in the Cougars' final match of the year at Wyoming.

2007 – Sophomore: Played in two matches and two games for the Cougars as a sophomore, totaling four kills on the year ... made her season debut in the third game against Utah Valley State, putting down one kill on one swing ... posted a season-high three kills in one game against Air Force in just her second match of the season.

2006 – Freshman: Played in 10 matches coming out of her redshirt year, totaling 23 kills, one assist, one ace, seven digs and 25 blocks ... averaged 1.32 blocks per game and 1.21 kills per game on .347 hitting ... made her Cougar debut against Central Florida at the UCF Fall Invitational ... posted a career-high six blocks against Texas A&M Corpus Christi ... started against Wyoming, TCU and New Mexico in place of the injured Rachel Dyer, recording a career-high 10 kills on .667 hitting against the Lobos while adding five blocks.

2005 – REDSHIRT: 2005 Cougar Club Scholar Athlete.

Season Averages			
Sets played:	8		
Kills per set:	0.75		
Digs per set:	0.12		
Blocks per set:	0.50		



MARISA BOAZ – 2009 Match-by-Match																	
Date	Opponent	SP	ATTACK				SET A	SERVE			PASS		BLOCK			GEN	
			K	E	TA	Pct		SA	SE	RE	DIG	BS	BA	BE	Total	BHE	
Aug 28, 2009	@ Ole Miss	DNP															
Aug 29, 2009	vs Texas State	DNP															
Aug 29, 2009	at Missouri	DNP															
Sept 1, 2009	@ Utah State	DNP															
Sept 4, 2009	Cal Poly	DNP															
Sept 5, 2009	Weber State	DNP															
Sept 5, 2009	No. 23 Kansas St.	DNP															
Sep 10, 2009	vs UCLA	DNP															
Sep 11, 2009	at Nebraska	DNP															
Sep 12, 2009	vs Virginia	DNP															
Sept 17, 2009	SDSU	DNP															
Sep 19, 2009	AIR FORCE	2	1	0	2	.500	0	0	0	0	1	0	1	0	1.0	0	
Sep 25, 2009	at Utah	DNP															
Sept 29, 2009	North Dakota St.	DNP															
Oct 3, 2009	at UNLV	DNP															
Oct 8, 2009	New Mexico	DNP															
Oct 10, 2009	TCU	3	2	2	8	.000	0	0	0	0	0	0	1	1	1.0	0	
Oct 15, 2009	at Colorado State	3	3	3	9	.000	0	0	0	0	0	0	2	1	2.0	0	
Oct 17, 2009	at Wyoming	DNP															
Oct 23, 2009	Utah																
Oct 27, 2009	Utah Valley																
Oct 29, 2009	UNLV																
Nov 5, 2009	at TCU																
Nov 7, 2009	at New Mexico																
Nov 12, 2009	Wyoming																
Nov 14, 2009	Colorado St.																
Nov 19, 2009	at Air Force																
Nov 21, 2009	at SDSU																
Nov 28, 2009	at St. Mary's																
Totals		8	6	5	19	.053	0	0	0	0	1	0	4	2	4.0	0	

Season and Career Highs

- Kills**
Season: 3 at Colorado St., 10/15/09
Career: 10 vs. New Mexico, 10/7/06
- Hitting Percentage**
Season: .500 vs. Air Force, 9/19/09
Career: 1.000 (twice)
- Assists**
Season: -
Career: 1 (twice)
- Digs**
Season: 1 vs. Air Force, 9/19/09
Career: 3 vs. TCU, 10/6/06
- Blocks**
Season: 2 at Colorado St., 10/15/09
Career: 6 vs. Texas A&M Corpus Christi, 9/2/06
- Aces**
Season: -
Career: 1 vs. Texas A&M Corpus Christi, 9/2/06

BEFORE BYU

Club: Played for Club Jamba under head coach Tom Clarke ... placed sixth at the National Volleyball Festival in Reno, Nev.

High School: Four-year letterwinner at Monache High School under head coach Kyle Newlin ... named league MVP as a senior ... earned Orange Belt Region First Team honors and first-team all-league accolades as a junior and senior ... varsity team MVP in both seasons ... also played varsity basketball as a sophomore and was the varsity track MVP as a freshman, sophomore and junior before breaking her foot before her senior season ... MHS Scholar-Athlete ... involved in Student Council, Link Crew and the California Scholarship Federation ... was the CSF Sealbearer and Valedictorian of her high school class.

PERSONAL

Parents are Thomas and Nancy Honka ... has one sister and two brothers ... one brother also attends BYU ... enjoys playing basketball, snowboarding, reading, watching movies, sleeping and eating ... spent one year at BYU not playing volleyball, making her a redshirt freshman in eligibility ... undeclared major.

17

Courtney
Honka



Libero/Defensive Specialist

5-8 • Freshman

Porterville, Calif.

Monache High School

Major: Undeclared



5

Brooke
Taulii Soon

Setter

5-11 • Sophomore

Torrance, Calif.

North Torrance High School

Major: Exercise and Wellness

AT BYU

2008 – Served as the team manager.

2007 – REDSHIRT

BEFORE BYU

Club: Played for the Southern California Volleyball Club 18-Nike team under current USC head coach Mick Haley.

High School: Two-year letterwinner at North Torrance High School under head coach Lawrence Hom ... earned first-team all-league recognition as a senior in 2006 while totaling 246 kills, 21 assists, 56 aces, 420 digs and 31 blocks on .300 hitting ... also named team captain and all-tournament in 2006 ... team advanced to the CIF semifinals during her junior year in 2005 ... played with the junior varsity team as a freshman and sophomore, serving as team captain in 2004 and earning team MVP honors.

PERSONAL

Parents are Kevin and Gina Taulii ... got married in the summer of 2009 to Kamali Soon ... has three sisters ... sister Amanda plays softball for the University of Hawai'i ... exercise and wellness major.

BEFORE BYU

Club: Played for Vegas Blues under head coach Shannon Alia.

High School: Four-year letterwinner at Centennial High School under head coach Shannon Alia ... named region MVP and all-region first team ... also named team MVP ... lettered in track and field ... involved in Student Council ... Valedictorian of her graduating class.

PERSONAL

Parents are Mike and DeDe Sagers ... has two brothers and one sister ... all played volleyball in high school, and brother Kevin is currently an outside hitter on the BYU men's volleyball team ... favorite food is Mexican food ... favorite musician is Carrie Underwood and favorite actor is Jim Carrey ... favorite movie is *Rocketman* ... enjoys playing the piano ... sports hero is Olympic gymnastics champion Shawn Johnson ... exercise science major.

13

Lauren
Sagers



Rightside Hitter

6-0 • Freshman

Las Vegas, Nev.

Centennial High School

Major: Exercise Science



3
C o u r t n e y
D o n a l d s o n

Rightside Hitter

6-0 • Redshirt

LaVerne, Calif.

Bonita High School

Major: Undeclared

BEFORE BYU

Club: Played for the Club West Volleyball Club 2004-09 for all four elite teams ... participated in the Junior Olympics 2005-08.

High School: Three-year letterwinner at Bonita High School under head coach Morgan Coberly ... named team MVP in 2008 ... team captain ... team offensive MVP in 2007 ... first team All-San Gabriel Valley ... Miramonte League MVP ... CIF First Team ... first-team all-league ... Miramonte league champions in 2006, 2007 and 2008 ... CIF semifinalist ... three-time San Gabriel Valley Tribune Athlete of the Week ... career high 23 kills, six blocks and 14 service aces.

PERSONAL

Parents are Paul and Debra Donaldson ... has one brother and two sisters ... participated in her high school choir ... cheerleader four years in high school, lettering two years on varsity ... member of student government ... Bonita HS mascot ... major undeclared.

BEFORE BYU

Club: Played for Club V under coach Reed Carlson ... won the Inter Mountain Region and finished 38th at the Junior Olympics in 2008 ... team captain.

High School: Three-year varsity letterwinner at Layton High School ... named All-Region 1 First Team by the Ogden Standard Examiner ... also garnered all-state honorable mention while helping her team win the region championship and place fifth at the state championship tournament in 2008 ... named a Standard Examiner Prep of the Week and Deseret News Student-Athlete of the Week during the season ... career highs of 25 kills, eight blocks and five service aces ... academic honors include Student of the Month as both a freshman and a junior ... active in Book Club and HOSA ... also named all-state honorable mention in basketball.

PERSONAL

Parents are Alan and Melinda LeCheminant ... has two sisters and one brother ... both sisters also play volleyball while her dad was on the ski team at BYU and her mom high-jumped for BYU and Texas A&M, becoming the NCAA Champion in the high jump in 1989 ... sports hero is Michael Jordan and non-sports hero is Emma Smith ... enjoys reading, playing with kids, making porcelain dolls and other arts and crafts, taking pictures and being outside ... also recruited by Utah, UNLV, Utah State, Maryland, Lamar, South Carolina, West Virginia, Southern Utah and Virginia ... undeclared major.

4

K a t h r y n
L e C h e m i n a n t



Middle Blocker

6-2 • Redshirt

Bountiful, Utah

Layton High School

Major: Undeclared

Match 1: Ole Miss vs. BYU

Match 2: Texas State vs. BYU

Volleyball Box Score
BYU Cougar Volleyball 2009
Ole Miss vs BYU Cougars (Aug 28, 2009 at Columbia, Mo.)

Volleyball Box Score
BYU Cougar Volleyball 2009
Texas State vs BYU Cougars (Aug 29, 2009 at Columbia, Mo.)

#	Ole Miss	S	Attack				Serve			Block				Pt		
			K	E	TA	Pct	Ast	SA	SE	RE	Dig	BS	BA		BE	BHE
1	Whitney Craven	3	8	9	25	.040	0	0	1	2	7	0	1	0	0	8
3	Miranda Kitts	3	7	2	16	.312	0	0	2	0	0	1	2	0	0	9
6	Katie Norris	3	17	6	38	.289	0	0	1	0	1	0	2	0	0	18
7	Emily Kvitte	3	1	1	6	.000	39	0	1	0	8	0	1	1	0	1
8	Regina Thomas	2	2	3	5	-.200	0	0	0	0	0	2	0	0	0	3
13	Caitlin Weiss	3	8	1	18	.389	0	0	0	0	1	0	1	0	0	8
2	Morgan Springer	3	0	0	0	.000	2	0	1	1	13	0	0	0	0	0
4	Danielle Sanchou	2	0	0	0	.000	0	0	1	0	3	0	0	0	0	0
5	Ashley Veach	1	0	0	0	.000	0	0	0	0	0	0	0	0	0	0
10	Courtney Cunningham	2	1	0	2	.500	0	0	0	0	0	0	1	0	0	1
12	Marielle Oestermeyer	3	1	0	2	.500	2	0	1	0	0	0	0	0	1	1
16	Catherine Heck	3	0	0	0	.000	0	0	2	0	2	0	0	0	0	0
Totals		3	45	22	112	.205	45	0	10	3	35	1	10	1	1	51

#	Texas State	S	Attack				Serve			Block				Pt		
			K	E	TA	Pct	Ast	SA	SE	RE	Dig	BS	BA		BE	BHE
5	Caleigh McCorquodale	3	0	0	0	.000	10	0	1	0	9	0	0	0	0	0
8	Matti Schumacher	3	2	3	7	-.143	0	0	0	0	0	0	0	0	0	2
9	Jessica Weynand	3	18	6	41	.293	1	0	0	0	7	0	0	0	0	18
12	Brittany Collins	3	0	1	5	-.200	20	1	3	0	4	0	0	0	0	1
13	Mo Middleton	3	5	4	22	.045	0	0	2	0	4	0	0	0	0	5
17	AJ Watlington	3	5	4	17	.059	0	0	1	2	4	0	0	0	0	5
1	Shelbi Irvin	2	0	0	0	.000	0	0	0	0	2	0	0	0	0	0
2	Lydia Werchan	2	0	1	1	-.1000	0	0	1	0	4	0	0	0	0	0
3	Ally Buitron	3	0	0	0	.000	0	0	0	0	8	0	0	0	0	0
10	Ashley Emanuel	3	5	5	14	.000	0	0	0	0	0	0	0	0	0	5
11	Whitney Rhoden	1	0	2	6	-.333	0	0	0	0	0	0	0	1	0	0
Totals		3	35	26	113	.080	35	1	8	2	42	0	0	1	0	36

Team Attack By Set

Set	K	E	TA	Pct	Sideout	Pct
1	18	11	40	.175	13-25	51%
2	12	5	36	.194	15-25	60%
3	15	6	36	.250	16-24	66%

SET SCORES: Ole Miss (0) 24 20 22 1-1; BYU Cougars (3) 26 25 25 1-0

TOTAL TEAM BLOCKS: 6.0

Team Attack By Set

Set	K	E	TA	Pct	Sideout	Pct
1	13	8	42	.119	14-24	58%
2	12	6	33	.182	13-25	51%
3	10	12	38	-.053	12-24	50%

SET SCORES: Texas State (0) 17 22 16 0-3; BYU Cougars (3) 25 25 25 2-0

TOTAL TEAM BLOCKS: 0.0

#	BYU Cougars	S	Attack				Serve			Block				Pt		
			K	E	TA	Pct	Ast	SA	SE	RE	Dig	BS	BA		BE	BHE
7	MEASOM, Christina	3	4	1	11	.273	1	0	0	0	0	2	0	0	5	
9	ROGERS, Kiana	3	5	0	6	.833	27	0	2	0	6	0	3	1	6	
12	WALKER, Kayla	3	13	5	38	.211	0	1	1	0	0	0	0	0	14	
14	CARPENTER, Christie	3	6	1	16	.312	0	1	1	0	6	0	1	0	7	
15	WARNER, Nicole	3	5	0	11	.455	0	1	2	0	1	0	4	1	8	
20	SPEREDON THURSTON, Ca	3	4	3	10	.100	0	0	0	0	0	0	3	0	5	
1	LLOYD SORENSEN, Morg	3	1	0	2	.500	1	0	1	0	11	0	0	0	1	
11	LAKE WRIGHT, Melissa	3	1	0	1	1.000	1	0	1	0	7	0	0	0	1	
Totals		3	39	10	95	.305	39	3	8	0	31	0	13	2	1	48

#	BYU Cougars	S	Attack				Serve			Block				Pt		
			K	E	TA	Pct	Ast	SA	SE	RE	Dig	BS	BA		BE	BHE
7	MEASOM, Christina	3	5	1	11	.364	0	0	0	0	0	5	0	0	7	
9	ROGERS, Kiana	3	1	0	4	.250	30	0	1	0	12	1	5	0	4	
12	WALKER, Kayla	3	13	1	31	.387	0	0	1	0	11	0	2	0	14	
14	CARPENTER, Christie	3	6	5	24	.042	1	1	1	0	6	1	5	1	10	
15	WARNER, Nicole	3	8	1	14	.500	0	0	1	0	2	1	3	0	10	
20	SPEREDON THURSTON, Ca	3	5	0	10	.500	0	0	0	0	0	0	0	0	5	
1	LLOYD SORENSEN, Morg	3	0	0	0	.000	1	2	0	0	8	0	0	0	1	
2	HANNEMANN, Heather	1	0	0	0	.000	0	0	0	0	0	0	0	0	0	
10	PHILLIPS, Camilla	2	0	0	1	.000	0	0	0	0	0	0	0	0	0	
11	LAKE WRIGHT, Melissa	3	0	0	0	.000	1	0	0	0	6	0	0	0	0	
16	LAU, Stephanie	1	0	1	1	-.1000	0	0	0	1	0	0	0	0	0	
Totals		3	38	9	96	.302	38	2	6	1	45	3	20	1	0	53

Team Attack By Set

Set	K	E	TA	Pct	Sideout	Pct
1	11	3	30	.267	14-24	58%
2	16	3	31	.419	14-19	73%
3	12	4	34	.235	17-23	73%

SET SCORES: Ole Miss (0) 24 20 22 1-1; BYU Cougars (3) 26 25 25 1-0

TOTAL TEAM BLOCKS: 6.5

Site: Columbia, Mo. (Hearnes Center)
Date: Aug 28, 2009 Attend: Time: 1:30
Referees: Daryl Korinek, Jose Jones, Kent Brockman

Tie scores: 1 2 3 Total
7 1 9 17

Team Attack By Set

Set	K	E	TA	Pct	Sideout	Pct
1	16	2	35	.400	15-18	83%
2	12	3	28	.321	13-22	59%
3	10	4	33	.182	12-17	70%

SET SCORES: Texas State (0) 17 22 16 0-3; BYU Cougars (3) 25 25 25 2-0

TOTAL TEAM BLOCKS: 13.0

Site: Columbia, Mo. (Hearnes Center)
Date: Aug 29, 2009 Attend: Time: 1:23
Referees: Jose Jones, Daryl Korinek, Kent Brockman

Match 3: BYU @ Missouri

Match 4: BYU @ Utah State

Volleyball Box Score
BYU Cougar Volleyball 2009
BYU Cougars vs Missouri (Aug 29, 2009 at Columbia, Mo.)

Volleyball Box Score
BYU Cougar Volleyball 2009
BYU Cougars vs Utah State (Sep 01, 2009 at Logan, Utah)

#	BYU Cougars	S	Attack				Serve			Block				Pt		
			K	E	TA	Pct	Ast	SA	SE	RE	Dig	BS	BA		BE	BHE
7	MEASOM, Christina	4	10	3	18	.389	1	0	0	0	1	0	2	0	11	
9	ROGERS, Kiana	4	3	0	6	.500	36	0	1	0	8	0	2	0	1	
11	LAKE WRIGHT, Melissa	4	0	0	1	.000	2	0	1	0	7	0	0	0	0	
12	WALKER, Kayla	4	11	8	38	.079	0	0	1	1	8	0	3	0	12	
14	CARPENTER, Christie	4	9	8	36	.028	0	3	2	2	5	0	3	1	13	
15	WARNER, Nicole	4	4	5	18	-.056	0	2	0	0	2	1	7	1	9	
1	LLOYD SORENSEN, Morg	4	0	1	1	-.1000	0	0	0	3	19	0	0	0	0	
2	HANNEMANN, Heather	1	0	0	0	.000	0	0	0	0	0	0	0	0	0	
10	PHILLIPS, Camilla	1	1	1	3	.000	0	0	1	0	0	0	0	0	1	
16	LAU, Stephanie	1	0	0	0	.000	0	0	0	0	0	0	0	0	0	
20	SPEREDON THURSTON, Ca	4	9	2	25	.280	0	0	0	0	1	1	3	0	11	
Team										2						
Totals		4	47	28	146	.130	47	4	6	8	51	2	20	2	3	63

#	BYU Cougars	S	Attack				Serve			Block				Pt	
			K	E	TA	Pct	Ast	SA	SE	RE	Dig	BS	BA		BE
6	GOODSELL, Chelsea	5	0	0	0	.000	0	0	3	0	9	0	0	0	0
7	MEASOM, Christina	5	13	2	25	.440	0	0	0	0	0	0	3	0	14
9	ROGERS, Kiana	5	3	1	6	.333	54	1	0	1	8	0	3	0	2
12	WALKER, Kayla	5	25	10	52	.288	0	0	0	0	9	0	2	0	26
14	CARPENTER, Christie	5	11	5	31	.194	2	0	0	4	1	0	2	1	12
15	WARNER, Nicole	5	6	3	18	.167	0	2	1	0	1	0	5	0	10
1	LLOYD SORENSEN, Morg	5	0	0	1	.000	1	1	1	4	11	0	0	0	1
11	LAKE WRIGHT, Melissa	5	0	0	0	.000	0	0	0	1	2	0	0	0	0
20	SPEREDON THURSTON, Ca	5	6	8	19	-.105	1	0	0	0	2	0	1	0	6

2009 Box Scores

Match 5: Cal Poly @ BYU

Volleyball Box Score
BYU Cougars
Cal Poly vs BYU Cougars (Sep 04, 2009 at Provo, Utah)

#	Cal Poly	Attack				Serve			Block				Pt			
		S	K	E	TA	Pct	Ast	SA	SE	RE	Dig	BS		BA	BE	BHE
1	Olowofata, Dominique	5	10	5	28	.179	0	0	0	0	0	0	5	0	0	12
4	Smith, Catie	5	0	2	6	-.333	1	2	3	0	6	0	0	0	0	2
6	Pon, Molly	5	13	7	31	.194	0	0	0	1	2	0	0	0	0	13
8	Keddy, Jennifer	2	0	1	3	-.333	0	0	0	0	0	0	0	2	0	0
14	Kearini, Anuhea	5	0	1	1	-1.000	15	0	2	0	3	1	0	0	0	0
21	Franks, Holly	5	16	10	40	.150	7	0	4	0	8	1	5	1	0	19
2	Mort, Alison	5	1	0	1	1.000	1	1	0	2	15	0	0	0	0	2
3	Fithian, Hailey	4	2	0	4	.500	37	0	1	0	7	0	1	0	1	2
5	McConnell, Megan	5	12	3	25	.360	0	0	0	0	5	2	0	0	0	13
11	Law, Lauren	5	0	0	2	.000	0	0	0	1	11	0	0	0	0	0
15	Santos, Anicia	5	9	2	17	.412	0	2	1	0	2	0	4	0	0	13
Totals		5	63	31	158	.203	61	5	11	4	59	1	18	3	1	78

Team Attack By Set

Set	K	E	TA	Pct	Sideout	Pct
1	10	4	21	.286	14-25	56%
2	10	11	44	-.023	12-24	50%
3	15	9	37	.162	11-23	47%
4	17	4	36	.361	12-16	75%
5	11	3	20	.400	10-14	71%

TOTAL TEAM BLOCKS: 10.0

SET SCORES

1	2	3	4	5	Team Records:
Cal Poly (2)	18	22	25	13	0-5
BYU Cougars (3)	25	25	22	16	15-3-2

#	BYU Cougars	Attack				Serve			Block				Pt			
		S	K	E	TA	Pct	Ast	SA	SE	RE	Dig	BS		BA	BE	BHE
6	GOODSELL, Chelsea	5	0	2	5	-.400	2	1	2	1	7	0	0	0	0	1
9	ROGERS, Kiana	5	3	1	7	.286	41	1	1	0	7	0	3	0	0	5
11	LAKE WRIGHT, Melissa	5	0	0	1	.000	3	0	1	1	14	0	0	0	0	0
12	WALKER, Kayla	5	22	6	51	.314	0	0	0	0	7	1	7	0	0	26
14	CARPENTER, Christie	5	7	5	17	.118	1	0	0	0	5	0	6	2	0	10
15	WARNER, Nicole	5	8	5	24	.125	0	0	2	0	0	0	5	2	0	10
1	LLOYD SORENSEN, Morg	5	0	0	0	.000	4	2	1	2	11	0	0	0	0	2
7	MEASOM, Christina	5	7	6	27	.037	1	0	0	0	0	0	1	1	0	7
10	PHILLIPS, Camilla	2	1	0	1	1.000	0	0	0	0	0	0	1	0	0	1
20	SPEREDON THURSTON, Ca	5	8	2	18	.333	1	0	0	1	0	0	2	2	0	9
Totals		5	56	27	151	.192	53	4	7	5	52	1	25	7	0	73

Team Attack By Set

Set	K	E	TA	Pct	Sideout	Pct
1	15	4	25	.440	14-18	77%
2	12	10	39	.051	13-23	56%
3	7	5	29	.069	10-24	41%
4	11	6	39	.128	12-25	47%
5	11	2	19	.474	11-14	78%

TOTAL TEAM BLOCKS: 13.5

Site: Provo, Utah (Smith Fieldhouse)
Date: Sep 04, 2009 Attend: 1145 Time: 2:20 pm
Referees: Maile Jewkes, Daphne Nelson, Karen Marshall

1 2 3 4 5 Total

2009 BYU Women's Volleyball

Match 6: Weber State @ BYU

Volleyball Box Score
The Automated ScoreBook
Weber State vs BYU Cougars (Sep 05, 2009 at Provo, Utah)

#	Weber State	Attack				Serve			Block				Pt			
		S	K	E	TA	Pct	Ast	SA	SE	RE	Dig	BS		BA	BE	BH
1	BAIR, Chelsea	3	10	7	21	.143	0	0	1	0	4	0	1	0	0	0
5	JONES, Emily	3	2	1	6	.167	0	0	0	1	0	0	2	1	0	0
6	TAYLOR, Jocilyn	3	0	1	2	-.500	14	1	3	0	3	0	0	2	0	0
10	LEGGAT, Jenna	3	5	4	12	.083	0	0	2	0	2	0	2	0	1	0
11	FACKRELL, Amy	3	10	1	15	.600	0	1	3	0	0	0	2	0	1	0
13	ANDERSON, Caitlyn	3	7	7	20	.000	0	0	2	1	6	0	0	0	0	0
2	LISSINNA, Kim	3	0	0	2	.000	13	0	0	0	0	0	0	0	0	0
4	KAP, Mikelle	3	0	0	1	.000	1	1	3	3	6	0	0	0	0	0
7	PENROD, Caitlin	2	0	0	0	.000	4	0	0	0	0	0	1	0	0	0
8	NOBLE, Carissa	1	0	0	0	.000	0	0	0	0	0	0	0	0	0	0
Totals		3	34	21	79	.165	32	3	14	5	21	0	8	3	2	0

Team Attack By Set

Set	K	E	TA	Pct
1	13	7	27	.222
2	10	8	30	.067
3	11	6	22	.227

TOTAL TEAM BLOCKS: 4.0

SET SCORES

1	2	3	Team Records:
Weber State (0)	19	20	17-1-4
BYU Cougars (3)	25	25	25-4-2

#	BYU Cougars	Attack				Serve			Block				Pt			
		S	K	E	TA	Pct	Ast	SA	SE	RE	Dig	BS		BA	BE	BH
6	GOODSELL, Chelsea	3	0	0	0	.000	1	0	1	1	3	0	0	0	0	0
9	ROGERS, Kiana	3	2	0	4	.500	23	1	0	0	4	0	4	0	1	3
11	LAKE WRIGHT, Melissa	3	0	0	1	.000	1	0	0	1	2	0	0	0	0	0
12	WALKER, Kayla	3	9	3	20	.300	0	0	0	1	3	0	1	0	0	0
14	CARPENTER, Christie	3	5	4	13	.077	0	3	2	0	5	1	3	0	0	0
15	WARNER, Nicole	3	3	2	10	.100	0	0	0	0	1	1	2	0	0	0
1	LLOYD SORENSEN, Morg	3	0	0	0	.000	2	1	0	1	0	0	1	0	0	1
7	MEASOM, Christina	3	5	2	8	.375	0	0	0	0	2	0	0	0	0	0
20	SPEREDON THURSTON, Ca	3	7	1	12	.500	0	0	0	0	0	0	0	0	0	0
Totals		3	31	12	68	.279	27	5	4	3	21	2	10	0	2	0

Team Attack By Set

Set	K	E	TA	Pct
1	11	4	21	.333
2	8	5	26	.115
3	12	3	21	.429

Site: Provo, Utah (Smith Fieldhouse)
Date: Sep 05, 2009 Attend: Time: 1h 12m
Referees: Tom Given, Terri Jackson, Karen Marshall

Match 7: No. 23 Kansas State @ BYU

Volleyball Box Score
BYU Cougars
#23 Kansas State vs BYU Cougars (Sep 05, 2009 at Provo, Utah)

#	Kansas State	Attack				Serve			Block				Pt			
		S	K	E	TA	Pct	Ast	SA	SE	RE	Dig	BS		BA	BE	BH
1	Donahue, Caitlyn	5	15	5	41	.244	0	2	3	1	21	0	1	1	0	17
5	Ludwig, Kathleen	5	11	6	30	.167	0	3	2	0	10	0	4	1	0	16
6	Fay, Abby	5	0	0	0	.000	1	0	0	0	9	0	0	0	0	1
7	Pacheco, Soriana	5	1	0	7	.143	54	2	1	0	8	0	4	1	0	5
14	Chipman, Kelsey	5	19	4	37	.405	1	0	1	0	7	0	6	2	0	22
16	Allison, Sarah	5	4	1	10	.300	3	0	0	0	0	0	3	0	0	5
2	Mathewson, Lauren	5	0	0	0	.000	2	0	3	3	22	0	0	0	0	0
10	Horton, Audrey	1	0	0	0	.000	0	0	0	0	0	0	2	0	0	1
11	Grot, Izabela	1	0	0	1	.000	0	0	0	0	0	0	0	0	0	0
13	Chisholm, JuliAnne	5	15	12	61	.049	1	0	0	1	5	0	2	0	0	16
Totals		5	65	28	187	.198	61	8	10	5	82	0	22	5	0	84

Team Attack By Set

Set	K	E	TA	Pct	Sideout	Pct
1	12	6	34	.176	10-21	47%
2	16	6	48	.208	15-25	60%
3	18	5	38	.342	13-19	68%
4	11	7	40	.100	12-25	47%
5	8	4	27	.148	7-11	63%

TOTAL TEAM BLOCKS: 11.0

SET SCORES

1	2	3	4	5	Team Records:
Kansas State (3)	25	22	25	17	15-4-2
BYU Cougars (2)	21	25	19	25	11-4-3

#	BYU Cougars	Attack				Serve			Block				Pt			
		S	K	E	TA	Pct	Ast	SA	SE	RE	Dig	BS		BA	BE	BH
6	GOODSELL, Chelsea	5	0	1	2	-.500	2	2	0	0	13	0	0	0	0	2
9	ROGERS, Kiana	5	2	0	7	.286	48	0	2	0	10	1	2	0	0	4
11	LAKE WRIGHT, Melissa	5	0	0	1	.000	2	1	1	1	18	0	0	0	0	1
12	WALKER, Kayla	5	14	8	64	.094	2	1	1	3	17	0	4	2	0	17
14	CARPENTER, Christie	5	5	2	21	.143	0	1	1	0	4	0	4	0	0	8
15	WARNER, Nicole	5	12	0	24	.500	1	0	0	0	1	0	7	2	0	15
1	LLOYD SORENSEN, Morg	5	0	0	0	.000	1	0	1	4	24	0	0	0	0	0
7	MEASOM, Christina	5	14	7	31	.226	0	0	0	0	1	0	2	0	0	15
20	SPEREDON THURSTON, Ca	5	9	4	20	.250	0	0	0	0	1	0	3	0	0	10
Totals		5	56	22	170	.200	56	5	6	8	89	1	22	4	0	73

Team Attack By Set

Set	K	E	TA	Pct	Sideout	Pct
1	11	7	34	.118	10-25	40%
2	14	2	43	.279	15-22	68%
3	10	4	32	.188	13-25	51%
4	16	5	34	.324	12-17	70%
5	5	4	27	.037	7-15	46%

TOTAL TEAM BLOCKS: 12.0

Site: Provo, Utah (Smith Fieldhouse)
Date: Sep 05, 2009 Attend: 571 Time: 2H 15M
Referees: Tom Given, Teri Jackson, Karen Marshall

1 2 3 4 5 Total

Tie scores 7 7 6 1 2 23
Lead change 4 2 3 1 1 11

Match 8: BYU vs. No. 8 UCLA

Volleyball

2009 Box Scores

2009 BYU Women's Volleyball

Match 9: BYU @ No. 5 Nebraska

Match 10: BYU vs. Virginia

Volleyball Box Score BYU Cougar Volleyball 2009 BYU Cougars vs #5 Nebraska (Sep 11, 2009 at Lincoln, NE)

#	BYU Cougars	Attack				Ast	Serve			Block				Pt		
		S	K	E	TA		Pct	SA	SE	RE	Dig	BS	BA		BE	BHE
7	MEASOM, Christina	4	12	3	22	.409	0	0	3	0	0	0	2	0	0	13
9	ROGERS, Kiana	4	1	1	6	.000	39	0	1	0	10	1	1	0	0	2
11	LAKE WRIGHT, Melissa	4	0	0	0	.000	2	0	1	1	14	0	0	0	0	0
12	WALKER, Kayla	4	14	9	43	.116	1	0	0	1	6	0	4	0	0	16
14	CARPENTER, Christie	4	8	3	23	.217	0	0	0	0	0	0	0	0	0	8
15	WARNER, Nicole	4	6	1	13	.385	0	0	0	0	1	0	5	0	0	8
1	LLOYD SORENSEN, Morg	4	0	0	3	.000	0	1	1	3	3	0	0	0	0	1
2	HANNEMANN, Heather	1	0	0	0	.000	0	0	0	0	0	0	0	0	0	1
6	GOODSELL, Chelsea	4	0	1	1	-1.000	2	1	1	1	13	0	0	0	0	1
20	SPEREDON THURSTON, Ca	4	7	1	20	.300	0	0	0	2	2	0	2	0	0	8
Totals		4	48	19	131	.221	44	2	7	6	49	1	14	0	1	58

Team Attack By Set						
Set	K	E	TA	Pct	Sideout	Pct
1	18	1	25	.680	15-19	78%
2	14	6	30	.267	15-24	62%
3	6	5	40	.025	10-25	40%
4	10	7	36	.083	15-24	62%

TOTAL TEAM BLOCKS: 8.0						
SET SCORES						
BYU Cougars (1)	1	2	3	4	Team Records:	
Nebraska (3)	25	21	10	21	4-5	
	18	25	25	25	7-1	

#	Nebraska	Attack				Ast	Serve			Block				Pt		
		S	K	E	TA		Pct	SA	SE	RE	Dig	BS	BA		BE	BHE
1	Anderson, Sydney	4	7	0	9	.778	49	0	1	0	10	0	0	1	0	7
4	Licht, Lindsey	4	7	4	19	.158	0	0	0	0	0	0	4	0	0	9
6	Wilberger, Jordan	4	4	2	10	.200	0	0	0	1	0	0	1	1	0	4
8	Delano, Brooke	4	12	2	20	.500	0	0	0	0	3	0	5	0	0	14
19	Mueller, Tara	4	13	6	30	.233	3	3	1	0	11	1	1	0	0	17
44	Werth, Hannah	4	12	4	31	.258	2	0	2	1	7	1	1	0	0	13
2	Banwarth, Kayla	4	0	0	1	.000	4	2	1	0	20	0	0	0	0	2
7	Mancuso, Gina	4	5	2	16	.188	1	1	2	0	6	0	0	0	0	6
Totals		4	60	20	136	.294	59	6	7	2	57	2	12	2	0	74

Team Attack By Set						
Set	K	E	TA	Pct	Sideout	Pct
1	13	4	26	.346	14-24	58%
2	17	6	32	.344	16-22	72%
3	16	3	38	.342	10-10	100%
4	14	7	40	.175	16-22	72%

TOTAL TEAM BLOCKS: 8.0						
SET SCORES						
BYU Cougars (1)	1	2	3	4	Team Records:	
Nebraska (3)	25	21	10	21	4-5	
	18	25	25	25	7-1	

Site: Lincoln, NE (NU Coliseum)
Date: Sep 11, 2009 Attend: 4124 Time: 1:50
Referees: Gary Houghton, Joan Powell

Tie scores	0	4	0	8	12
Lead changes	0	0	0	4	4

Volleyball Box Score BYU Cougar Volleyball 2009 BYU Cougars vs Virginia (Sep 12, 2009 at Lincoln, NE)

#	BYU Cougars	Attack				Ast	Serve			Block				Pt		
		S	K	E	TA		Pct	SA	SE	RE	Dig	BS	BA		BE	BHE
7	MEASOM, Christina	4	12	4	27	.296	0	1	3	0	1	0	4	0	0	15
9	ROGERS, Kiana	4	1	1	7	.000	41	1	2	0	11	0	2	0	0	3
11	LAKE WRIGHT, Melissa	4	0	0	0	.000	2	3	0	2	11	0	0	0	0	3
12	WALKER, Kayla	4	17	7	48	.208	0	0	1	0	9	0	0	1	0	17
14	CARPENTER, Christie	4	6	7	22	-.045	0	0	0	0	0	0	2	0	0	7
15	WARNER, Nicole	4	7	2	20	.250	1	0	2	0	2	0	3	1	0	8
1	LLOYD SORENSEN, Morg	4	0	1	3	-.333	2	0	1	1	21	0	0	0	0	0
2	HANNEMANN, Heather	1	0	0	0	.000	3	0	1	0	0	0	0	0	0	0
6	GOODSELL, Chelsea	4	0	0	2	.000	0	0	2	1	18	0	0	0	0	0
10	PHILLIPS, Camilla	2	1	2	7	-.143	0	0	0	0	0	0	0	0	0	1
17	HONKA, Courtney	1	0	0	0	.000	0	0	0	0	0	0	0	0	0	0
20	SPEREDON THURSTON, Ca	4	7	6	27	.037	0	0	0	1	2	0	3	0	0	8
Totals		4	51	30	165	.127	49	5	12	5	75	0	14	2	0	63

Team Attack By Set						
Set	K	E	TA	Pct	Sideout	Pct
1	9	5	45	.089	12-25	47%
2	17	14	56	.054	15-28	53%
3	17	3	35	.400	15-19	78%
4	8	8	29	.000	12-24	50%

TOTAL TEAM BLOCKS: 7.0						
SET SCORES						
BYU Cougars (1)	1	2	3	4	Team Records:	
Virginia (3)	15	27	25	17	4-6	
	25	29	18	25	5-4	

#	Virginia	Attack				Ast	Serve			Block				Pt		
		S	K	E	TA		Pct	SA	SE	RE	Dig	BS	BA		BE	BHE
2	Rachel Gray	4	4	0	12	.333	35	0	1	0	9	0	6	0	0	7
4	Lauren Dickson	4	16	4	44	.273	2	0	1	1	13	3	0	2	0	19
8	Sydney Hill	4	7	2	23	.217	0	0	0	0	2	0	4	0	0	9
11	Simone Asque	4	12	9	39	.077	1	1	0	1	13	0	3	0	1	14
16	Hillary Trebels	3	1	1	5	.000	1	1	1	0	2	1	2	0	0	4
17	Tobi Farrar	4	5	2	16	.188	0	0	0	0	1	0	3	0	0	6
3	Kendahl Voelker	1	0	0	1	.000	0	0	0	0	0	0	0	0	0	0
7	AJ Cushman	4	0	0	0	.000	6	2	1	1	26	0	0	0	0	2
12	Brittani Rendina	4	0	0	1	.000	1	1	0	2	8	0	0	0	0	1
22	Jessica O'Shoney	3	3	2	7	.143	0	0	1	0	3	0	5	0	0	5
Totals		4	48	21	149	.181	46	5	5	5	77	4	23	2	1	68

Team Attack By Set						
Set	K	E	TA	Pct	Sideout	Pct
1	18	3	44	.341	12-15	80%
2	9	8	46	.022	16-28	57%
3	10	5	36	.139	14-24	58%
4	11	5	23	.261	13-18	72%

TOTAL TEAM BLOCKS: 15.5						
SET SCORES						
BYU Cougars (1)	1	2	3	4	Team Records:	
Virginia (3)	15	27	25	17	4-6	
	25	29	18	25	5-4	

Site: Lincoln, NE (NU Coliseum)
Date: Sep 12, 2009 Attend: 244 Time: 1:55
Referees: Gary Houghton, Joan Powell
Illegal sub for UVA resulting in a loss of point

Match 11: SDSU @ BYU

Match 12: Air Force @ BYU

Volleyball Box Score BYU Cougar Volleyball 2009 SDSU Aztecs vs BYU Cougars (Sep 17, 2009 at BYU PROVO UT)

Volleyball Box Score BYU Cougar Volleyball 2009 Air Force Falcons vs BYU Cougars (Sep 19, 2009 at PROVO UT)

#	SDSU Aztecs	Attack				Ast	Serve			Block				Pt		
		S	K	E	TA		Pct	SA	SE	RE	Dig	BS	BA		BE	BHE
1	HANNASCH, Andrea	5	7	2	24	.208	0	4	0	0	3	0	5	0	0	13
2	PEARSON, Pajie	5	7	8	20	-.050	0	0	0	0	1	0	1	0	0	7
3	SALISBURY, Lauren	5	13	2	24	.458	1	0	0	0	0	1	1	0	0	13
5	VAN ORDEN, Lauren	5	6	0	10	.600	47	2	2	0	11	0	0	2	0	8
8	SEXTON, Kylee	5	15	10	51	.098	0	0	0	1	5	1	2	0	0	17
10	MANASCO, Kelsey	4	5	5	25	.000	1	1	0	3	5	0	3	0	0	7
4	MCMILLAN, Caitlin	5	1	1	6	.000	1	0	2	0	6	0	0	0	0	1
6	EVANS, Hannah	2	3	2	11	.091	0	0	0	1	3	0	0	0	0	3
13	LAMPHIER, Courtney	5	0	0	0	.000	1	0	0	1	8	0	0	0	0	0
17	JACKELS, Kristi	5	0	0	0	.000	4	1	1	0	23	0	0	0	0	1
Totals		5	57	30	171	.158	55	8	5	6	65	1	12	3	0	72

Team Attack By Set						
Set	K	E	TA	Pct	Sideout	Pct
1	7	9	31	-.065	9-24	37%
2	15	6	47	.191	14-22	63%
3	15	2	32	.406	17-24	70%
4	17	7	40	.250	1	

Match 13: BYU @ Utah

Volleyball Box Score
BYU Cougar Volleyball 2009
BYU Cougars vs Utah (Sep 25, 2009 at Salt Lake City, Utah)

#	BYU Cougars	Attack				Ast	Serve			Block				Pt	
		S	K	E	TA		Pct	SA	SE	RE	Dig	BS	BA		BE
7	MEASOM, Christina	5	7	4	32	.094	0	0	0	3	0	11	0	1	12
9	ROGERS, Kiana	5	5	2	9	.333	41	2	2	0	6	2	5	1	11
11	LAKE WRIGHT, Melissa	5	0	0	1	.000	2	0	1	0	15	0	0	0	0
12	WALKER, Kayla	5	19	13	58	.103	1	0	0	1	11	1	4	0	22
14	CARPENTER, Christie	5	7	7	30	.000	0	0	0	4	1	1	0	0	8
15	WARNER, Nicole	5	6	3	18	.167	1	0	2	0	1	2	4	0	10
1	LLOYD SORENSEN, Morg	5	0	0	1	.000	1	0	2	2	2	0	0	0	0
6	GOODSELL, Chelsea	5	0	0	1	.000	0	2	3	2	9	0	0	0	2
10	PHILLIPS, Camilla	5	8	4	21	.190	0	0	0	1	1	0	6	0	11
16	LAU, Stephanie	1	0	0	1	.000	0	0	0	0	0	0	0	0	0
Totals		5	52	33	172	.110	46	4	10	6	71	6	31	1	77

Team Attack By Set

Set	K	E	TA	Pct	Sideout	Pct
1	10	6	31	.129	14-18	77%
2	8	10	38	.053	10-25	40%
3	13	5	43	.186	15-27	55%
4	14	9	42	.119	17-31	54%
5	7	3	18	.222	10-15	66%

TOTAL TEAM BLOCKS: 21.5

SET SCORES	1	2	3	4	5	Team Records:
BYU Cougars (2)	25	19	29	29	10	6-7, 2-1 MWC
Utah (3)	19	25	27	31	15	9-5, 3-0 MWC

#	Utah	Attack				Ast	Serve			Block				Pt	
		S	K	E	TA		Pct	SA	SE	RE	Dig	BS	BA		BE
6	SANDBERG, Chelsey	5	3	3	14	.000	1	1	3	0	4	1	4	0	7
9	KILLPACK, Danielle	5	3	5	11	.182	0	0	0	0	0	0	9	0	7
10	BARTKOWIAK, Karolina	5	22	9	39	.333	0	1	4	0	17	0	4	0	25
13	SILVA, Cinthia	5	14	10	42	.095	1	1	2	3	10	0	6	1	18
14	SIMMONS, Abby	5	0	0	0	.000	31	0	1	0	12	0	0	0	0
16	HIBBERT, Sarah	5	14	12	62	.032	0	0	0	0	8	0	2	0	15
2	NEELEY, Stephanie	5	0	0	1	.000	27	1	0	0	7	0	0	0	1
4	CRUMP, Corinne	3	0	0	1	.000	0	1	2	0	0	0	0	0	1
7	LANTING, Jennifer	5	9	4	21	.238	0	0	0	0	0	0	4	0	11
11	FISHER, Keisha	5	0	0	2	.000	2	1	0	1	18	0	0	0	1
Totals		5	65	43	193	.114	62	6	12	4	76	1	29	1	86

Team Attack By Set

Set	K	E	TA	Pct	Sideout	Pct
1	12	12	39	.000	14-25	56%
2	9	6	34	.088	10-19	52%
3	18	12	55	.109	15-29	51%
4	18	11	45	.156	17-29	58%
5	8	2	20	.300	10-10	100%

TOTAL TEAM BLOCKS: 15.5

Site: Salt Lake City, Utah (Crimson Court)
Date: Sep 25, 2009 Attend: 1747 Time: 2:12
Referees: Patricia Malta, Maile Jewkes

Tie scores	1	2	3	4	5	Total
	5	0	14	11	1	31

Match 14: NDSU @ BYU

Volleyball Box Score
BYU Cougar Volleyball 2009
NDSU bison vs BYU Cougars (Sep 29, 2009 at BYU PROVO UT)

#	NDSU bison	Attack				Ast	Serve			Block				Pt	
		S	K	E	TA		Pct	SA	SE	RE	Dig	BS	BA		BE
2	Brooke VandenBergh	3	11	6	39	.128	0	0	1	0	10	0	2	1	12
3	Jennifer Lopez	3	1	0	5	.200	34	1	0	0	2	0	3	1	3
5	Lauren McLaughlin	3	8	7	33	.030	0	0	0	0	2	1	0	0	9
9	Chrissy Knuth	3	9	5	22	.182	0	0	0	0	3	1	2	1	11
12	Megan Lambertson	2	1	0	6	.167	0	0	0	0	0	0	1	0	1
13	Jocelyn VerVelde	3	8	2	14	.429	0	0	0	0	2	0	1	0	8
1	Kelly Lopez	3	0	0	0	.000	3	1	1	0	14	0	0	0	1
4	Janna Deyle	2	1	1	4	.000	0	0	0	0	4	0	3	0	2
6	Abbey Perez	3	0	0	0	.000	0	0	2	1	10	0	0	0	0
8	Mattie Johnson	1	0	0	0	.000	0	0	0	0	0	0	0	0	0
11	Andrea Henning	3	0	0	0	.000	1	0	2	0	5	0	0	0	0
Totals		3	39	21	123	.146	38	2	7	1	52	2	12	3	49

Team Attack By Set

Set	K	E	TA	Pct	Sideout	Pct
1	16	2	40	.350	12-24	50%
2	12	11	46	.022	14-26	53%
3	11	8	37	.081	14-25	56%

TOTAL TEAM BLOCKS: 8.0

SET SCORES	1	2	3	Team Records:
NDSU bison (0)	20	24	24	10-3-6-0 :SL
BYU Cougars (3)	25	26	26	7-7; 2-1 :MWC

#	BYU Cougars	Attack				Ast	Serve			Block				Pt	
		S	K	E	TA		Pct	SA	SE	RE	Dig	BS	BA		BE
6	GOODSELL, Chelsea	3	0	0	0	.000	0	0	0	1	2	0	0	0	0
7	MEASOM, Christina	3	10	6	22	.182	0	0	0	0	1	0	1	0	10
9	ROGERS, Kiana	3	1	0	4	.250	38	0	0	0	16	0	3	0	2
11	LAKE WRIGHT, Melissa	3	0	0	3	.000	3	1	0	0	10	0	0	0	1
12	WALKER, Kayla	3	16	6	39	.256	0	0	2	1	13	0	2	0	17
15	WARNER, Nicole	3	11	1	16	.625	0	0	0	0	1	0	5	0	13
1	LLOYD SORENSEN, Morg	3	0	0	0	.000	2	0	1	0	8	0	0	0	0
10	PHILLIPS, Camilla	3	3	6	19	.158	0	0	0	0	5	0	0	0	3
14	CARPENTER, Christie	3	4	1	18	.167	0	0	0	0	1	0	1	1	4
16	LAU, Stephanie	2	1	2	9	.111	0	0	0	0	1	0	0	0	1
Totals		3	46	22	130	.185	43	1	3	2	58	0	12	1	53

Team Attack By Set

Set	K	E	TA	Pct	Sideout	Pct
1	20	4	43	.372	13-21	61%
2	13	8	43	.116	14-24	58%
3	13	10	44	.068	15-25	60%

TOTAL TEAM BLOCKS: 6.0

Site: BYU PROVO UT (ELAINE MICHAELIS)
Date: Sep 29, 2009 Attend: 819 Time: 1H 25M
Referees: MAILE NELSON, MIKE FARISH, KAREN MARSHALL

1	2	3	Total

Match 15: BYU @ UNLV

Volleyball Box Score
BYU Cougar Volleyball 2009
BYU Cougars vs LV (10-03-09 at Las Vegas, Nev.)

#	BYU Cougars	Attack				Ast	Serve			Block				Pt	
		S	K	E	TA		Pct	SA	SE	RE	Dig	BS	BA		BE
7	MEASOM, Christina	3	6	3	15	.200	0	0	0	0	0	7	0	1	9
9	ROGERS, Kiana	3	1	0	1	.000	30	1	1	0	9	0	4	1	4
10	PHILLIPS, Camilla	3	6	3	19	.158	0	0	0	0	1	0	2	0	7
11	LAKE WRIGHT, Melissa	3	0	0	0	.000	1	0	2	0	6	0	0	0	0
12	WALKER, Kayla	3	14	5	39	.231	0	0	1	0	9	2	5	0	18
15	WARNER, Nicole	3	5	2	11	.273	0	0	0	0	2	0	4	1	7
1	LLOYD SORENSEN, Morg	3	0	1	1	.000	3	0	2	0	10	0	0	0	0
2	HANNEMANN, Heather	1	0	0	0	.000	0	0	0	0	0	0	0	0	0
6	GOODSELL, Chelsea	3	0	0	0	.000	1	0	1	0	4	0	0	0	0
14	CARPENTER, Christie	3	6	2	17	.235	0	0	0	0	0	0	0	0	6
Totals		3	38	16	103	.214	35	1	7	0	41	2	22	2	52

Team Attack By Set

Set	K	E	TA	Pct	Sideout	Pct
1	9	5	33	.121	12-18	66%
2	12	7	37	.135	10-17	58%
3	17	4	33	.394	16-22	72%

TOTAL TEAM BLOCKS: 13.0

SET SCORES	1	2	3	Team Records:
BYU Cougars (3)	25	25	25	8-7 (3-1 MWC)
LV (0)	17	17	21	3-10 (2-4 MWC)

#	LV	Attack				Ast	Serve			Block				Pt
		S	K	E	TA		Pct	SA	SE	RE	Dig	BS	BA	
2	MAKIWI, Jealynn	2	0	0	0									

Match 17: TCU @ BYU

Match 18: BYU @ Colorado St.

Volleyball Box Score
BYU Cougar Volleyball 2009
TCU vs BYU Cougars (Oct 10, 2009 at Provo, Utah)

Volleyball Box Score
BYU Cougar Volleyball 2009
BYU Cougars vs Colorado State (Oct 15, 2009 at Fort Collins, Colo.)

##	TCU	S	Attack				Ast	Serve			Block				Pt	
			K	E	TA	Pct		SA	SE	RE	Dig	BS	BA	BE		BHE
2	EDWARDS, Kourtney	3	12	4	30	.267	0	0	0	1	1	2	2	0	14	
5	HESTER, Kristen	3	6	1	11	.455	1	0	0	1	0	0	0	0	6	
7	MUNCE, Megan	3	7	1	12	.500	39	0	3	0	7	2	0	1	8	
8	HUDSON, Christy	3	10	3	26	.269	0	0	0	4	1	0	0	0	11	
10	HESTER, Irene	3	7	3	24	.167	2	0	2	0	6	0	0	0	7	
17	OTTO, Lauren	3	8	2	23	.261	2	0	1	1	13	1	0	0	9	
1	BLACKWOOD, Katelyn	3	0	0	0	.000	1	0	1	1	12	0	0	0	0	
3	PONT, Kylie	1	0	0	0	.000	0	0	0	0	0	0	0	0	0	
12	HORIO, Meghan	3	0	0	0	.000	3	1	1	1	3	0	0	0	1	
31	HERNANDEZ, Victoria	1	0	0	0	.000	0	0	0	0	0	0	0	0	0	
Totals		3	50	14	126	.286	48	1	8	3	47	3	4	2	1	56

##	BYU Cougars	S	Attack				Ast	Serve			Block				Pt	
			K	E	TA	Pct		SA	SE	RE	Dig	BS	BA	BE		BHE
6	GOODSELL, Chelsea	2	0	0	0	.000	0	0	1	0	1	0	0	0	0	
8	BOAZ, Marisa	3	3	3	9	.000	0	0	0	0	0	0	0	0	4	
9	ROGERS, Kiana	3	0	0	4	.000	26	0	0	0	7	0	1	0	0	
11	LAKE WRIGHT, Melissa	3	0	0	2	.000	0	0	2	0	0	0	0	0	0	
14	CARPENTER, Christie	3	8	7	38	.026	0	0	2	0	6	0	0	1	0	
15	WARNER, Nicole	3	9	1	12	.667	0	0	1	0	0	0	2	0	10	
1	LLOYD SORENSEN, Morg	3	0	0	1	.000	2	1	3	0	10	0	0	0	1	
7	MEASOM, Christina	3	5	6	25	-.040	0	1	0	0	0	0	0	1	0	
10	PHILLIPS, Camilla	3	3	2	11	.091	0	0	0	2	0	0	3	0	4	
Totals		3	28	19	102	.088	28	2	9	2	33	0	8	3	0	34

Team Attack By Set

Set	K	E	TA	Pct	Sideout	Pct
1	16	5	43	.256	17-25	68%
2	17	5	44	.273	14-24	58%
3	17	4	39	.333	14-22	63%

SET SCORES: 1 2 3
TCU (3) 27 25 25
BYU Cougars (0) 25 23 22

Team Records:
TCU (3) 16-5, 5-2 MWC
BYU Cougars (0) 9-8, 4-2 MWC

Team Attack By Set

Set	K	E	TA	Pct	Sideout	Pct
1	9	9	38	.000	12-25	47%
2	10	7	37	.081	11-24	45%
3	9	3	27	.222	14-25	56%

SET SCORES: 1 2 3
BYU Cougars (0) 15 16 21
Colorado State (3) 25 25 25

Team Records:
BYU Cougars (0) 9-9, 4-3 MWC
Colorado State (3) 15-3, 7-0 MWC

##	BYU Cougars	S	Attack				Ast	Serve			Block				Pt	
			K	E	TA	Pct		SA	SE	RE	Dig	BS	BA	BE		BHE
7	MEASOM, Christina	3	10	2	27	.296	0	0	0	4	1	2	1	0	12	
8	BOAZ, Marisa	3	2	2	8	.000	0	0	0	0	0	1	1	0	2	
9	ROGERS, Kiana	3	1	1	6	.000	35	1	1	0	7	2	0	0	3	
10	PHILLIPS, Camilla	3	5	2	17	.176	1	0	0	2	0	2	0	1	6	
14	CARPENTER, Christie	3	15	6	41	.220	0	0	1	0	10	2	1	0	16	
15	WARNER, Nicole	3	10	5	23	.217	1	0	1	0	3	0	6	0	13	
1	LLOYD SORENSEN, Morg	3	0	0	0	.000	1	1	1	0	13	0	0	0	1	
6	GOODSELL, Chelsea	3	0	0	0	.000	0	1	0	1	2	0	0	0	1	
11	LAKE WRIGHT, Melissa	3	0	0	1	.000	2	0	1	0	11	0	0	0	0	
Totals		3	43	18	123	.203	40	3	5	1	52	1	15	3	2	54

##	Colorado State	S	Attack				Ast	Serve			Block				Pt	
			K	E	TA	Pct		SA	SE	RE	Dig	BS	BA	BE		BHE
2	CRANSTON, Dana	3	0	0	0	.000	1	0	0	0	8	0	0	0	0	
5	PLOURDE, Megan	3	4	1	10	.300	1	0	0	0	0	2	0	0	5	
8	SANDERS, Evan	3	3	0	4	.750	35	0	2	0	7	0	3	0	1	
10	DAVISSON, Jacque	3	8	4	28	.143	0	0	1	0	11	0	1	0	8	
11	NELSON, Tessa	3	10	0	15	.667	0	2	1	0	1	0	6	0	15	
13	MINCH, Danielle	3	9	6	25	.120	0	0	0	0	3	1	2	0	11	
4	STEFFAN, Katelyn	3	7	2	12	.417	2	0	1	0	4	0	2	0	8	
6	BATTEN, Katelyn	3	0	0	0	.000	0	0	1	1	16	0	0	0	0	
9	KOENNING, Emily	1	0	0	0	.000	0	0	1	0	0	0	0	0	0	
16	HEMNINGS, Audrey	3	0	0	1	.000	0	0	1	0	4	0	0	0	0	
Team											1					
Totals		3	41	13	95	.295	39	2	8	2	54	1	16	0	1	52

Team Attack By Set

Set	K	E	TA	Pct	Sideout	Pct
1	18	7	49	.229	17-27	62%
2	12	5	38	.184	13-24	54%
3	13	6	37	.189	14-25	56%

Site: Provo, Utah (Smith Fieldhouse)
Date: Oct 10, 2009 Attend: 1027 Time: 1h 31m
Referees: Jesse Martinez, Mike Farish, Chelsea Nita

Team Attack By Set

Set	K	E	TA	Pct	Sideout	Pct
1	13	3	31	.323	12-15	80%
2	13	4	31	.290	12-17	70%
3	15	6	33	.273	14-21	66%

Site: Fort Collins, Colo. (Moby Arena)
Date: Oct 15, 2009 Attend: 1605 Time: 1:25
Referees: Ed Halik, Tana Martin

Tie scores	1	2	3	Total
Lead changes	14	2	1	17
	3	0	0	3

Tie scores	1	2	3	Total
	0	0	4	4

Match 19: BYU @ Wyoming

Volleyball Box Score
BYU Cougar Volleyball 2009
BYU Cougars vs Wyoming (Oct 17, 2009 at Laramie, Wyo.)

##	BYU Cougars	S	Attack				Ast	Serve			Block				Pt	
			K	E	TA	Pct		SA	SE	RE	Dig	BS	BA	BE		BHE
6	GOODSELL, Chelsea	5	0	0	0	.000	0	1	2	1	8	0	0	0	1	
7	MEASOM, Christina	5	13	4	29	.310	0	0	0	0	1	2	4	0	17	
9	ROGERS, Kiana	5	1	1	8	.000	45	2	2	0	8	0	5	0	5	
11	LAKE WRIGHT, Melissa	5	0	0	0	.000	1	2	2	0	12	0	0	0	2	
14	CARPENTER, Christie	5	21	8	56	.232	0	1	1	0	8	0	1	0	22	
15	WARNER, Nicole	5	12	2	27	.370	0	0	0	0	6	0	4	0	14	
1	LLOYD SORENSEN, Morg	5	0	0	0	.000	5	1	1	0	18	0	0	0	1	
10	PHILLIPS, Camilla	5	5	7	23	-.087	1	0	0	0	2	0	2	0	6	
16	LAU, Stephanie	5	7	6	24	.042	0	0	0	1	0	0	0	0	7	
Team											1					
Totals		5	59	28	167	.186	52	7	8	3	63	2	16	0	0	76

Team Attack By Set

Set	K	E	TA	Pct	Sideout	Pct
1	12	5	42	.167	14-25	56%
2	16	5	42	.262	12-21	57%
3	12	10	37	.054	11-25	43%
4	12	7	31	.161	11-18	61%
5	7	1	15	.400	9-11	81%

SET SCORES: 1 2 3 4 5
BYU Cougars (3) 23 25 22 25 15
Wyoming (2) 25 21 25 18 11

Team Records:
BYU Cougars (3) 10-9 (5-3 MWC)
Wyoming (2) 10-12 (1-7 MWC)

##	Wyoming	S	Attack				Ast	Serve			Block				Pt
			K	E	TA	Pct		SA	SE	RE	Dig	BS	BA	BE	
1	BEDORE, Dani	5	3	3	12	.000	48	2	0	0	16	0	7	0	8
3	WHITNEY, Lauren	5	14	13	44	.023	0	0	0	3	5	0	0	0	14
5	PURDY, Jodi	5	20	5	40	.375	0	0	0	2	12	0	3	0	21
15	JESTER, JennaRae	5	12	4	28	.286	1	0	2	0	2	0	10	0	17
20	COFFMAN, Camille	5	6	8	26	-.077	3	0	1	0	1	0	2	0	7
24	BARTSCH, Makenzie	5	4	4	14	.000	1	0	0	0	1	0	2	0	5
2	SAPP, Nikky	2	0	0	0	.000	0	0	0	0	0	0	0	0	0
6	KAGARISE, Jessica	5	0	0	0	.000	4	1	1	1	25	0	0	0	1
9	CROWE, Brianna	4	0	0	0	.000	1	0	2	0	5	0	0	0	0
16	TRAMOSJANIN, J.	5	1	0	6	.167	0	0	1	1	5	0	0	0	1
Totals		5	60	37											

BYU Cougar Volleyball 2009
BYU Cougars Combined Team Statistics (as of Oct 17, 2009)
All matches

Overall record: 10-9 Conf: 5-3 Home: 6-2 Away: 2-5 Neutral: 2-2

##	Player	sp	Attack				pct	Set		Serve			Dig			Blocking					points	
			k	k/s	e	ta		a	a/s	sa	se	sa/s	re	dig	dig/s	bs	ba	total	blk/s	be		bhe
15	WARNER, Nicole	73	131	1.79	41	314	.287	5	0.07	7	17	0.10	0	31	0.42	5	88	93	1.27	12	0	-
9	ROGERS, Kiana	72	40	0.56	10	106	.283	687	9.54	12	22	0.17	2	155	2.15	5	60	65	0.90	4	9	-
7	MEASOM, Christina	73	165	2.26	65	410	.244	8	0.11	2	7	0.03	1	16	0.22	5	69	74	1.01	4	2	-
12	WALKER, Kayla	62	258	4.16	97	680	.237	4	0.06	4	10	0.06	10	124	2.00	5	46	51	0.82	4	0	-
20	SPEREDON THURST	48	81	1.69	37	226	.195	2	0.04	0	1	0.00	4	11	0.23	2	27	29	0.60	2	2	-
14	CARPENTER, Christie	68	139	2.04	79	455	.132	4	0.06	10	18	0.15	8	72	1.06	3	40	43	0.63	9	0	-
10	PHILLIPS, Camilla	39	45	1.15	34	154	.071	3	0.08	0	1	0.00	3	14	0.36	0	25	25	0.64	0	3	-
11	LAKE WRIGHT, Meliss	73	1	0.01	0	16	.062	30	0.41	8	17	0.11	7	176	2.41	0	0	0	0.00	0	1	-
8	BOAZ, Marisa	8	6	0.75	5	19	.053	0	0.00	0	0	0.00	0	1	0.12	0	4	4	0.50	2	0	-
2	HANNEMANN, Heather	8	0	0.00	0	1	.000	13	1.62	2	2	0.25	0	2	0.25	0	1	1	0.12	0	1	-
13	SAGERS, Lauren	1	0	0.00	0	0	.000	0	0.00	0	0	0.00	0	0	0.00	0	1	1	1.00	0	0	-
17	HONKA, Courtney	1	0	0.00	0	0	.000	0	0.00	0	0	0.00	0	0	0.00	0	0	0	0.00	0	0	-
16	LAU, Stephanie	12	9	0.75	11	51	-.039	0	0.00	0	0	0.00	2	2	0.17	0	0	0	0.00	0	0	-
1	LLOYD SORENSEN, M	73	1	0.01	4	17	-.176	28	0.38	10	28	0.14	22	238	3.26	0	0	0	0.00	0	2	-
6	GOODSELL, Chelsea	61	0	0.00	4	11	-.364	9	0.15	12	19	0.20	11	106	1.74	0	0	0	0.00	0	0	-
BYU COUGARS		73	876	12.00	387	2460	.199	816	11.18	67	142	0.92	73	948	12.99	25	361	205.5	2.82	37	20	-
Opponents		73	922	12.63	477	2512	.177	881	12.07	73	139	1.00	67	1048	14.36	26	257	154.5	2.12	34	16	-

Team Statistics	BY	OPP
ATTACK		
Kills	876	922
Errors	387	477
Total Attacks	2460	2512
Attack Pct	.199	.177
Kills/Set	12.0	12.6
SET		
Assists	816	881
Assists/Set	11.2	12.1
SERVE		
Aces	67	73
Errors	142	139
Aces/Set	0.9	1.0
SERVE RECEPTIONS		
Errors	73	67
Errors/Set	1.0	0.9
DEFENSE		
Digs	948	1048
Digs/Set	13.0	14.4
BLOCKING		
Block Solo	25	26
Block Assist	361	257
Total Blocks	205.5	154.5
Blocks/Set	2.8	2.1
Block Errors	37	34
Ball handling errors	20	16
ATTENDANCE		
Total	6746	11959
Dates/Avg Per Date	8/843	7/1708
Neutral site #/Avg	4/61	
Current win streak	1	-
Home win streak	0	-

Date	Opponent	Score	Score by set	Att.
+Aug 28	vs Ole Miss	W 3-0	26-24,25-20,25-22	0
+Aug 29	vs Texas State	W 3-0	25-17,25-22,25-16	0
+Aug 29	at Missouri	L 1-3	21-25,25-15,20-25,12-25	1621
Sep 01	at Utah State	L 2-3	18-25,25-21,15-25,28-26,11-15	1557
Sep 04	CAL POLY	W 3-2	25-18,25-22,22-25,16-25,15-13	1145
Sep 05	WEBER STATE	W 3-0	25-19,25-20,25-17	0
Sep 05	#23 KANSAS STATE	L 2-3	21-25,25-22,19-25,25-17,11-15	571
Sep 10	vs #8 UCLA	L 1-3	16-25,11-25,25-23,15-25	0
Sep 11	at #5 Nebraska	L 1-3	25-18,21-25,10-25,21-25	4124
Sep 12	vs Virginia	L 1-3	15-25,27-29,25-18,17-25	244
*Sep 17	SDSU AZTECS	W 3-2	25-19,21-25,24-26,25-22,15-7	1377
*Sep 19	AIR FORCE FALCONS	W 3-0	25-12,25-23,25-11	846
*Sep 25	at Utah	L 2-3	25-19,19-25,29-27,29-31,10-15	1747
Sep 29	NDSU BISON	W 3-0	25-20,26-24,26-24	819
*10-03-09	at LV	W 3-0	25-17,25-17,25-21	777
*Oct 08	NEW MEXICO	W 3-0	25-16,25-17,25-23	961
*Oct 10	TCU	L 0-3	25-27,23-25,22-25	1027
*Oct 15	at Colorado State	L 0-3	15-25,16-25,21-25	1605
*Oct 17	at Wyoming	W 3-2	23-25,25-21,22-25,25-18,15-11	528

+ Tiger Invitational
^ Nike Classic

Record in 3-set matches:7-2 • Record in 4-set matches:0-4 • Record in 5-set matches:3-3